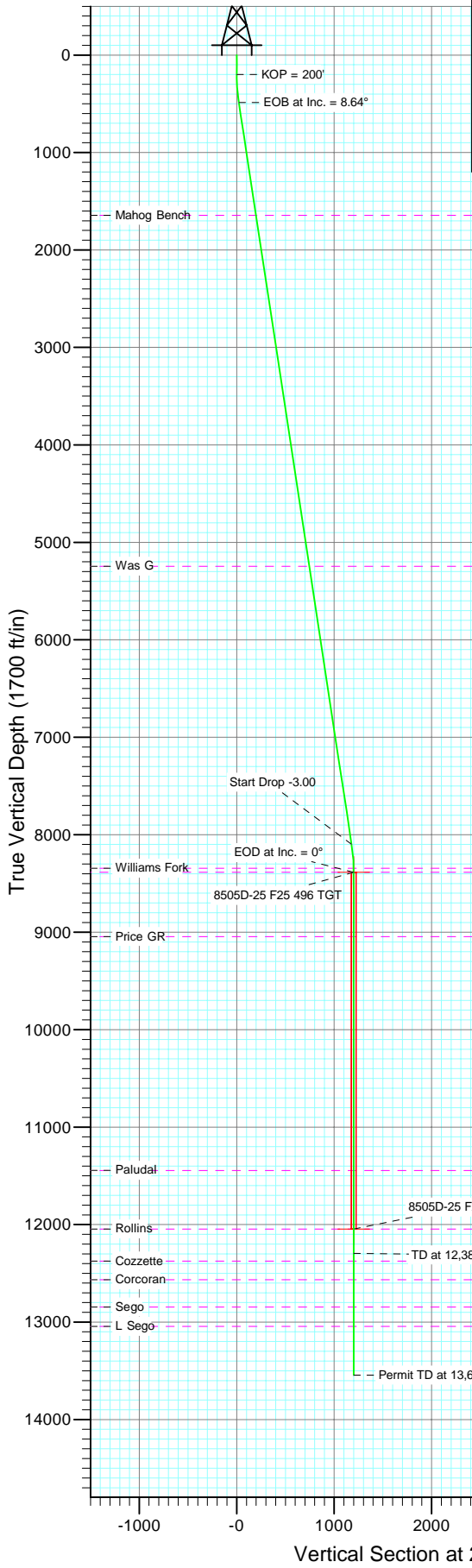
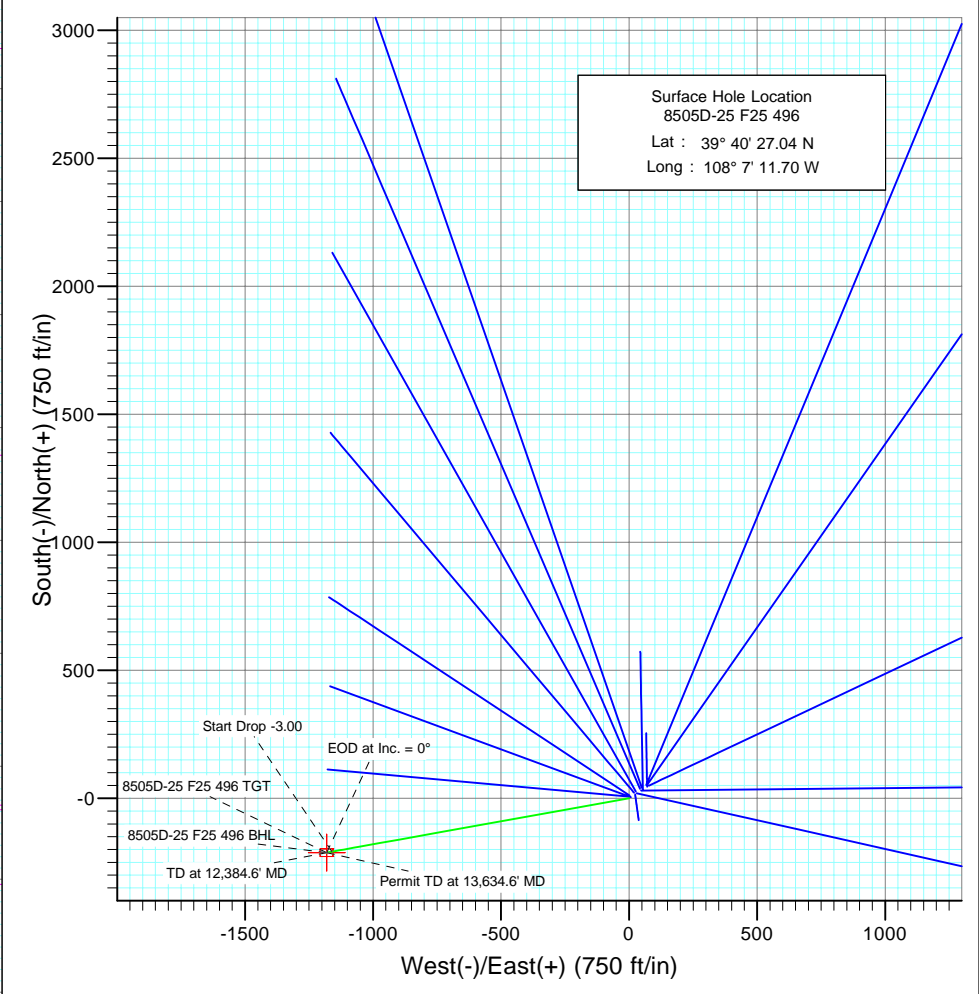




Project: Story Gulch  
 Site: F25 496  
 Well: 8505D-25 F25 496  
 Wellbore: DD  
 Design: Plan #1



SECTION DETAILS										
Sec	MD	Inc	Azi	TVD	+N-/S	+E-/W	DLeg	TFace	VSec	Target
1	0.0	0.00	0.00	0.0	0.0	0.0	0.00	0.00	0.0	
2	200.0	0.00	0.00	200.0	0.0	0.0	0.00	0.00	0.0	
3	488.1	8.64	259.83	487.0	-3.8	-21.4	3.00	259.83	21.7	
4	8186.5	8.64	259.83	8098.0	-208.2	-1160.2	0.00	0.00	1178.7	
5	8474.6	0.00	0.00	8385.0	-212.0	-1181.6	3.00	180.00	1200.4	8505D-25 F25 496 TGT
6	12134.6	0.00	0.00	12045.0	-212.0	-1181.6	0.00	0.00	1200.4	8505D-25 F25 496 BHL
7	12384.6	0.00	0.00	12295.0	-212.0	-1181.6	0.00	0.00	1200.4	
8	13634.6	0.00	0.00	13545.0	-212.0	-1181.6	0.00	0.00	1200.4	



Bottom Hole Location  
 8505D-25 F25 496  
 Lat : 39° 40' 24.94 N  
 Long. : 108° 7' 26.81 W

Azimuths to True North  
 Magnetic North: 10.64°  
  
 Magnetic Field  
 Strength: 52519.3snT  
 Dip Angle: 65.92°  
 Date: 9/1/2009  
 Model: IGRF200510

FORMATION TOP DETAILS		
TVDPath	MDPath	Formation
1645.0	1659.4	Mahog Bench
5245.0	5300.8	Was G
8345.0	8434.6	Williams Fork
8385.0	8474.6	Top of Gas
9045.0	9134.6	Price GR
11445.0	11534.6	Paludal
12045.0	12134.6	Rollins
12375.0	12464.6	Cozzette
12565.0	12654.6	Corcoran
12845.0	12934.6	Segó
13045.0	13134.6	L Segó

DESIGN DETAILS: Plan #1  
 Job #95xxx: KR  
 KBE @ 8320.0ft (Original Well Elev)

Target	Azimuth	Origin	N/S	E/W	From TVD
8505D-25 F25 496 BHL	259.83	Slot	0.0	0.0	0.0

## Planning Report

<b>Database:</b>	US EDM 2003.21 Multi User Db	<b>Local Co-ordinate Reference:</b>	Well 8505D-25 F25 496
<b>Company:</b>	EnCana Oil & Gas (USA) Inc	<b>TVD Reference:</b>	KBE @ 8320.0ft (Original Well Elev)
<b>Project:</b>	Story Gulch	<b>MD Reference:</b>	KBE @ 8320.0ft (Original Well Elev)
<b>Site:</b>	F25 496	<b>North Reference:</b>	True
<b>Well:</b>	8505D-25 F25 496	<b>Survey Calculation Method:</b>	Minimum Curvature
<b>Wellbore:</b>	DD		
<b>Design:</b>	Plan #1		

<b>Project</b>	Story Gulch		
<b>Map System:</b>	US State Plane 1983	<b>System Datum:</b>	Mean Sea Level
<b>Geo Datum:</b>	North American Datum 1983		
<b>Map Zone:</b>	Colorado Central Zone		

<b>Site</b>	F25 496				
<b>Site Position:</b>		<b>Northing:</b>	1,681,091.06 ft	<b>Latitude:</b>	39° 40' 27.10 N
<b>From:</b>	Lat/Long	<b>Easting:</b>	2,262,632.54 ft	<b>Longitude:</b>	108° 7' 11.76 W
<b>Position Uncertainty:</b>	0.0 ft	<b>Slot Radius:</b>	in	<b>Grid Convergence:</b>	-1.65 °

<b>Well</b>	8505D-25 F25 496					
<b>Well Position</b>	<b>+N/-S</b>	0.0 ft	<b>Northing:</b>	1,681,084.21 ft	<b>Latitude:</b>	39° 40' 27.04 N
	<b>+E/-W</b>	0.0 ft	<b>Easting:</b>	2,262,636.79 ft	<b>Longitude:</b>	108° 7' 11.70 W
<b>Position Uncertainty</b>		0.0 ft	<b>Wellhead Elevation:</b>	ft	<b>Ground Level:</b>	8,298.0 ft

<b>Wellbore</b>	DD				
<b>Magnetics</b>	<b>Model Name</b>	<b>Sample Date</b>	<b>Declination (°)</b>	<b>Dip Angle (°)</b>	<b>Field Strength (nT)</b>
	IGRF200510	9/1/2009	10.64	65.92	52,519

<b>Design</b>	Plan #1			
<b>Audit Notes:</b>				
<b>Version:</b>	<b>Phase:</b>	PLAN	<b>Tie On Depth:</b>	0.0
<b>Vertical Section:</b>	<b>Depth From (TVD) (ft)</b>	<b>+N/-S (ft)</b>	<b>+E/-W (ft)</b>	<b>Direction (°)</b>
	0.0	0.0	0.0	259.83

Plan Sections										
Measured Depth (ft)	Inclination (°)	Azimuth (°)	Vertical Depth (ft)	+N/-S (ft)	+E/-W (ft)	Dogleg Rate (°/100ft)	Build Rate (°/100ft)	Turn Rate (°/100ft)	TFO (°)	Target
0.0	0.00	0.00	0.0	0.0	0.0	0.00	0.00	0.00	0.00	
200.0	0.00	0.00	200.0	0.0	0.0	0.00	0.00	0.00	0.00	
488.1	8.64	259.83	487.0	-3.8	-21.4	3.00	3.00	0.00	259.83	
8,186.5	8.64	259.83	8,098.0	-208.2	-1,160.2	0.00	0.00	0.00	0.00	
8,474.6	0.00	0.00	8,385.0	-212.0	-1,181.6	3.00	-3.00	0.00	180.00	8505D-25 F25 496 TC
12,134.6	0.00	0.00	12,045.0	-212.0	-1,181.6	0.00	0.00	0.00	0.00	8505D-25 F25 496 BI
12,384.6	0.00	0.00	12,295.0	-212.0	-1,181.6	0.00	0.00	0.00	0.00	
13,634.6	0.00	0.00	13,545.0	-212.0	-1,181.6	0.00	0.00	0.00	0.00	

Planning Report

<b>Database:</b>	US EDM 2003.21 Multi User Db	<b>Local Co-ordinate Reference:</b>	Well 8505D-25 F25 496
<b>Company:</b>	EnCana Oil & Gas (USA) Inc	<b>TVD Reference:</b>	KBE @ 8320.0ft (Original Well Elev)
<b>Project:</b>	Story Gulch	<b>MD Reference:</b>	KBE @ 8320.0ft (Original Well Elev)
<b>Site:</b>	F25 496	<b>North Reference:</b>	True
<b>Well:</b>	8505D-25 F25 496	<b>Survey Calculation Method:</b>	Minimum Curvature
<b>Wellbore:</b>	DD		
<b>Design:</b>	Plan #1		

Planned Survey									
Measured Depth (ft)	Inclination (°)	Azimuth (°)	Vertical Depth (ft)	+N/-S (ft)	+E/-W (ft)	Vertical Section (ft)	Dogleg Rate (°/100ft)	Build Rate (°/100ft)	Comments / Formations
0.0	0.00	0.00	0.0	0.0	0.0	0.0	0.00	0.00	
100.0	0.00	0.00	100.0	0.0	0.0	0.0	0.00	0.00	
200.0	0.00	0.00	200.0	0.0	0.0	0.0	0.00	0.00	KOP = 200'
300.0	3.00	259.83	300.0	-0.5	-2.6	2.6	3.00	3.00	
400.0	6.00	259.83	399.6	-1.8	-10.3	10.5	3.00	3.00	
488.1	8.64	259.83	487.0	-3.8	-21.4	21.7	3.00	3.00	EOB at Inc. = 8.64°
500.0	8.64	259.83	498.8	-4.1	-23.1	23.5	0.00	0.00	
600.0	8.64	259.83	597.6	-6.8	-37.9	38.5	0.00	0.00	
700.0	8.64	259.83	696.5	-9.5	-52.7	53.5	0.00	0.00	
800.0	8.64	259.83	795.4	-12.1	-67.5	68.6	0.00	0.00	
900.0	8.64	259.83	894.2	-14.8	-82.3	83.6	0.00	0.00	
1,000.0	8.64	259.83	993.1	-17.4	-97.1	98.6	0.00	0.00	
1,100.0	8.64	259.83	1,092.0	-20.1	-111.9	113.7	0.00	0.00	
1,200.0	8.64	259.83	1,190.8	-22.7	-126.7	128.7	0.00	0.00	
1,300.0	8.64	259.83	1,289.7	-25.4	-141.5	143.7	0.00	0.00	
1,400.0	8.64	259.83	1,388.6	-28.0	-156.2	158.7	0.00	0.00	
1,500.0	8.64	259.83	1,487.4	-30.7	-171.0	173.8	0.00	0.00	
1,600.0	8.64	259.83	1,586.3	-33.3	-185.8	188.8	0.00	0.00	
1,659.4	8.64	259.83	1,645.0	-34.9	-194.6	197.7	0.00	0.00	Mahog Bench
1,700.0	8.64	259.83	1,685.1	-36.0	-200.6	203.8	0.00	0.00	
1,800.0	8.64	259.83	1,784.0	-38.7	-215.4	218.9	0.00	0.00	
1,900.0	8.64	259.83	1,882.9	-41.3	-230.2	233.9	0.00	0.00	
2,000.0	8.64	259.83	1,981.7	-44.0	-245.0	248.9	0.00	0.00	
2,100.0	8.64	259.83	2,080.6	-46.6	-259.8	264.0	0.00	0.00	
2,200.0	8.64	259.83	2,179.5	-49.3	-274.6	279.0	0.00	0.00	
2,300.0	8.64	259.83	2,278.3	-51.9	-289.4	294.0	0.00	0.00	
2,400.0	8.64	259.83	2,377.2	-54.6	-304.2	309.0	0.00	0.00	
2,500.0	8.64	259.83	2,476.1	-57.2	-319.0	324.1	0.00	0.00	
2,600.0	8.64	259.83	2,574.9	-59.9	-333.8	339.1	0.00	0.00	
2,700.0	8.64	259.83	2,673.8	-62.6	-348.6	354.1	0.00	0.00	
2,800.0	8.64	259.83	2,772.6	-65.2	-363.4	369.2	0.00	0.00	
2,900.0	8.64	259.83	2,871.5	-67.9	-378.2	384.2	0.00	0.00	
3,000.0	8.64	259.83	2,970.4	-70.5	-392.9	399.2	0.00	0.00	
3,100.0	8.64	259.83	3,069.2	-73.2	-407.7	414.3	0.00	0.00	
3,200.0	8.64	259.83	3,168.1	-75.8	-422.5	429.3	0.00	0.00	
3,300.0	8.64	259.83	3,267.0	-78.5	-437.3	444.3	0.00	0.00	
3,400.0	8.64	259.83	3,365.8	-81.1	-452.1	459.3	0.00	0.00	
3,500.0	8.64	259.83	3,464.7	-83.8	-466.9	474.4	0.00	0.00	
3,600.0	8.64	259.83	3,563.6	-86.4	-481.7	489.4	0.00	0.00	
3,700.0	8.64	259.83	3,662.4	-89.1	-496.5	504.4	0.00	0.00	
3,800.0	8.64	259.83	3,761.3	-91.8	-511.3	519.5	0.00	0.00	
3,900.0	8.64	259.83	3,860.2	-94.4	-526.1	534.5	0.00	0.00	
4,000.0	8.64	259.83	3,959.0	-97.1	-540.9	549.5	0.00	0.00	
4,100.0	8.64	259.83	4,057.9	-99.7	-555.7	564.5	0.00	0.00	
4,200.0	8.64	259.83	4,156.7	-102.4	-570.5	579.6	0.00	0.00	
4,300.0	8.64	259.83	4,255.6	-105.0	-585.3	594.6	0.00	0.00	
4,400.0	8.64	259.83	4,354.5	-107.7	-600.1	609.6	0.00	0.00	
4,500.0	8.64	259.83	4,453.3	-110.3	-614.8	624.7	0.00	0.00	
4,600.0	8.64	259.83	4,552.2	-113.0	-629.6	639.7	0.00	0.00	
4,700.0	8.64	259.83	4,651.1	-115.6	-644.4	654.7	0.00	0.00	
4,800.0	8.64	259.83	4,749.9	-118.3	-659.2	669.8	0.00	0.00	
4,900.0	8.64	259.83	4,848.8	-121.0	-674.0	684.8	0.00	0.00	

## Planning Report

<b>Database:</b>	US EDM 2003.21 Multi User Db	<b>Local Co-ordinate Reference:</b>	Well 8505D-25 F25 496
<b>Company:</b>	EnCana Oil & Gas (USA) Inc	<b>TVD Reference:</b>	KBE @ 8320.0ft (Original Well Elev)
<b>Project:</b>	Story Gulch	<b>MD Reference:</b>	KBE @ 8320.0ft (Original Well Elev)
<b>Site:</b>	F25 496	<b>North Reference:</b>	True
<b>Well:</b>	8505D-25 F25 496	<b>Survey Calculation Method:</b>	Minimum Curvature
<b>Wellbore:</b>	DD		
<b>Design:</b>	Plan #1		

Planned Survey									
Measured Depth (ft)	Inclination (°)	Azimuth (°)	Vertical Depth (ft)	+N/-S (ft)	+E/-W (ft)	Vertical Section (ft)	Dogleg Rate (°/100ft)	Build Rate (°/100ft)	Comments / Formations
5,000.0	8.64	259.83	4,947.7	-123.6	-688.8	699.8	0.00	0.00	
5,100.0	8.64	259.83	5,046.5	-126.3	-703.6	714.8	0.00	0.00	
5,200.0	8.64	259.83	5,145.4	-128.9	-718.4	729.9	0.00	0.00	
5,300.0	8.64	259.83	5,244.2	-131.6	-733.2	744.9	0.00	0.00	
5,300.8	8.64	259.83	5,245.0	-131.6	-733.3	745.0	0.00	0.00	Was G
5,400.0	8.64	259.83	5,343.1	-134.2	-748.0	759.9	0.00	0.00	
5,500.0	8.64	259.83	5,442.0	-136.9	-762.8	775.0	0.00	0.00	
5,600.0	8.64	259.83	5,540.8	-139.5	-777.6	790.0	0.00	0.00	
5,700.0	8.64	259.83	5,639.7	-142.2	-792.4	805.0	0.00	0.00	
5,800.0	8.64	259.83	5,738.6	-144.8	-807.2	820.1	0.00	0.00	
5,900.0	8.64	259.83	5,837.4	-147.5	-822.0	835.1	0.00	0.00	
6,000.0	8.64	259.83	5,936.3	-150.2	-836.7	850.1	0.00	0.00	
6,100.0	8.64	259.83	6,035.2	-152.8	-851.5	865.1	0.00	0.00	
6,200.0	8.64	259.83	6,134.0	-155.5	-866.3	880.2	0.00	0.00	
6,300.0	8.64	259.83	6,232.9	-158.1	-881.1	895.2	0.00	0.00	
6,400.0	8.64	259.83	6,331.8	-160.8	-895.9	910.2	0.00	0.00	
6,500.0	8.64	259.83	6,430.6	-163.4	-910.7	925.3	0.00	0.00	
6,600.0	8.64	259.83	6,529.5	-166.1	-925.5	940.3	0.00	0.00	
6,700.0	8.64	259.83	6,628.3	-168.7	-940.3	955.3	0.00	0.00	
6,800.0	8.64	259.83	6,727.2	-171.4	-955.1	970.4	0.00	0.00	
6,900.0	8.64	259.83	6,826.1	-174.1	-969.9	985.4	0.00	0.00	
7,000.0	8.64	259.83	6,924.9	-176.7	-984.7	1,000.4	0.00	0.00	
7,100.0	8.64	259.83	7,023.8	-179.4	-999.5	1,015.4	0.00	0.00	
7,200.0	8.64	259.83	7,122.7	-182.0	-1,014.3	1,030.5	0.00	0.00	
7,300.0	8.64	259.83	7,221.5	-184.7	-1,029.1	1,045.5	0.00	0.00	
7,400.0	8.64	259.83	7,320.4	-187.3	-1,043.9	1,060.5	0.00	0.00	
7,500.0	8.64	259.83	7,419.3	-190.0	-1,058.7	1,075.6	0.00	0.00	
7,600.0	8.64	259.83	7,518.1	-192.6	-1,073.4	1,090.6	0.00	0.00	
7,700.0	8.64	259.83	7,617.0	-195.3	-1,088.2	1,105.6	0.00	0.00	
7,800.0	8.64	259.83	7,715.9	-197.9	-1,103.0	1,120.7	0.00	0.00	
7,900.0	8.64	259.83	7,814.7	-200.6	-1,117.8	1,135.7	0.00	0.00	
8,000.0	8.64	259.83	7,913.6	-203.3	-1,132.6	1,150.7	0.00	0.00	
8,100.0	8.64	259.83	8,012.4	-205.9	-1,147.4	1,165.7	0.00	0.00	
8,186.5	8.64	259.83	8,098.0	-208.2	-1,160.2	1,178.7	0.00	0.00	Start Drop -3.00
8,200.0	8.24	259.83	8,111.3	-208.6	-1,162.2	1,180.7	3.00	-3.00	
8,300.0	5.24	259.83	8,210.6	-210.6	-1,173.7	1,192.5	3.00	-3.00	
8,400.0	2.24	259.83	8,310.4	-211.8	-1,180.1	1,199.0	3.00	-3.00	
8,434.6	1.20	259.83	8,345.0	-212.0	-1,181.1	1,200.0	3.00	-3.00	Williams Fork
8,474.6	0.00	0.00	8,385.0	-212.0	-1,181.6	1,200.4	3.00	-3.00	EOD at Inc. = 0° - Top of Gas - 8505D-25 F25 4
8,500.0	0.00	0.00	8,410.4	-212.0	-1,181.6	1,200.4	0.00	0.00	
8,600.0	0.00	0.00	8,510.4	-212.0	-1,181.6	1,200.4	0.00	0.00	
8,700.0	0.00	0.00	8,610.4	-212.0	-1,181.6	1,200.4	0.00	0.00	
8,800.0	0.00	0.00	8,710.4	-212.0	-1,181.6	1,200.4	0.00	0.00	
8,900.0	0.00	0.00	8,810.4	-212.0	-1,181.6	1,200.4	0.00	0.00	
9,000.0	0.00	0.00	8,910.4	-212.0	-1,181.6	1,200.4	0.00	0.00	
9,100.0	0.00	0.00	9,010.4	-212.0	-1,181.6	1,200.4	0.00	0.00	
9,134.6	0.00	0.00	9,045.0	-212.0	-1,181.6	1,200.4	0.00	0.00	Price GR
9,200.0	0.00	0.00	9,110.4	-212.0	-1,181.6	1,200.4	0.00	0.00	
9,300.0	0.00	0.00	9,210.4	-212.0	-1,181.6	1,200.4	0.00	0.00	
9,400.0	0.00	0.00	9,310.4	-212.0	-1,181.6	1,200.4	0.00	0.00	
9,500.0	0.00	0.00	9,410.4	-212.0	-1,181.6	1,200.4	0.00	0.00	
9,600.0	0.00	0.00	9,510.4	-212.0	-1,181.6	1,200.4	0.00	0.00	

## Planning Report

<b>Database:</b>	US EDM 2003.21 Multi User Db	<b>Local Co-ordinate Reference:</b>	Well 8505D-25 F25 496
<b>Company:</b>	EnCana Oil & Gas (USA) Inc	<b>TVD Reference:</b>	KBE @ 8320.0ft (Original Well Elev)
<b>Project:</b>	Story Gulch	<b>MD Reference:</b>	KBE @ 8320.0ft (Original Well Elev)
<b>Site:</b>	F25 496	<b>North Reference:</b>	True
<b>Well:</b>	8505D-25 F25 496	<b>Survey Calculation Method:</b>	Minimum Curvature
<b>Wellbore:</b>	DD		
<b>Design:</b>	Plan #1		

Planned Survey									
Measured Depth (ft)	Inclination (°)	Azimuth (°)	Vertical Depth (ft)	+N/-S (ft)	+E/-W (ft)	Vertical Section (ft)	Dogleg Rate (°/100ft)	Build Rate (°/100ft)	Comments / Formations
9,700.0	0.00	0.00	9,610.4	-212.0	-1,181.6	1,200.4	0.00	0.00	
9,800.0	0.00	0.00	9,710.4	-212.0	-1,181.6	1,200.4	0.00	0.00	
9,900.0	0.00	0.00	9,810.4	-212.0	-1,181.6	1,200.4	0.00	0.00	
10,000.0	0.00	0.00	9,910.4	-212.0	-1,181.6	1,200.4	0.00	0.00	
10,100.0	0.00	0.00	10,010.4	-212.0	-1,181.6	1,200.4	0.00	0.00	
10,200.0	0.00	0.00	10,110.4	-212.0	-1,181.6	1,200.4	0.00	0.00	
10,300.0	0.00	0.00	10,210.4	-212.0	-1,181.6	1,200.4	0.00	0.00	
10,400.0	0.00	0.00	10,310.4	-212.0	-1,181.6	1,200.4	0.00	0.00	
10,500.0	0.00	0.00	10,410.4	-212.0	-1,181.6	1,200.4	0.00	0.00	
10,600.0	0.00	0.00	10,510.4	-212.0	-1,181.6	1,200.4	0.00	0.00	
10,700.0	0.00	0.00	10,610.4	-212.0	-1,181.6	1,200.4	0.00	0.00	
10,800.0	0.00	0.00	10,710.4	-212.0	-1,181.6	1,200.4	0.00	0.00	
10,900.0	0.00	0.00	10,810.4	-212.0	-1,181.6	1,200.4	0.00	0.00	
11,000.0	0.00	0.00	10,910.4	-212.0	-1,181.6	1,200.4	0.00	0.00	
11,100.0	0.00	0.00	11,010.4	-212.0	-1,181.6	1,200.4	0.00	0.00	
11,200.0	0.00	0.00	11,110.4	-212.0	-1,181.6	1,200.4	0.00	0.00	
11,300.0	0.00	0.00	11,210.4	-212.0	-1,181.6	1,200.4	0.00	0.00	
11,400.0	0.00	0.00	11,310.4	-212.0	-1,181.6	1,200.4	0.00	0.00	
11,500.0	0.00	0.00	11,410.4	-212.0	-1,181.6	1,200.4	0.00	0.00	
11,534.6	0.00	0.00	11,445.0	-212.0	-1,181.6	1,200.4	0.00	0.00	Paludal
11,600.0	0.00	0.00	11,510.4	-212.0	-1,181.6	1,200.4	0.00	0.00	
11,700.0	0.00	0.00	11,610.4	-212.0	-1,181.6	1,200.4	0.00	0.00	
11,800.0	0.00	0.00	11,710.4	-212.0	-1,181.6	1,200.4	0.00	0.00	
11,900.0	0.00	0.00	11,810.4	-212.0	-1,181.6	1,200.4	0.00	0.00	
12,000.0	0.00	0.00	11,910.4	-212.0	-1,181.6	1,200.4	0.00	0.00	
12,100.0	0.00	0.00	12,010.4	-212.0	-1,181.6	1,200.4	0.00	0.00	
12,134.6	0.00	0.00	12,045.0	-212.0	-1,181.6	1,200.4	0.00	0.00	Rollins - 8505D-25 F25 496 BHL
12,200.0	0.00	0.00	12,110.4	-212.0	-1,181.6	1,200.4	0.00	0.00	
12,300.0	0.00	0.00	12,210.4	-212.0	-1,181.6	1,200.4	0.00	0.00	
12,384.6	0.00	0.00	12,295.0	-212.0	-1,181.6	1,200.4	0.00	0.00	TD at 12,384.6' MD
12,400.0	0.00	0.00	12,310.4	-212.0	-1,181.6	1,200.4	0.00	0.00	
12,464.6	0.00	0.00	12,375.0	-212.0	-1,181.6	1,200.4	0.00	0.00	Cozzette
12,500.0	0.00	0.00	12,410.4	-212.0	-1,181.6	1,200.4	0.00	0.00	
12,600.0	0.00	0.00	12,510.4	-212.0	-1,181.6	1,200.4	0.00	0.00	
12,654.6	0.00	0.00	12,565.0	-212.0	-1,181.6	1,200.4	0.00	0.00	Corcoran
12,700.0	0.00	0.00	12,610.4	-212.0	-1,181.6	1,200.4	0.00	0.00	
12,800.0	0.00	0.00	12,710.4	-212.0	-1,181.6	1,200.4	0.00	0.00	
12,900.0	0.00	0.00	12,810.4	-212.0	-1,181.6	1,200.4	0.00	0.00	
12,934.6	0.00	0.00	12,845.0	-212.0	-1,181.6	1,200.4	0.00	0.00	Sego
13,000.0	0.00	0.00	12,910.4	-212.0	-1,181.6	1,200.4	0.00	0.00	
13,100.0	0.00	0.00	13,010.4	-212.0	-1,181.6	1,200.4	0.00	0.00	
13,134.6	0.00	0.00	13,045.0	-212.0	-1,181.6	1,200.4	0.00	0.00	L Sego
13,200.0	0.00	0.00	13,110.4	-212.0	-1,181.6	1,200.4	0.00	0.00	
13,300.0	0.00	0.00	13,210.4	-212.0	-1,181.6	1,200.4	0.00	0.00	
13,400.0	0.00	0.00	13,310.4	-212.0	-1,181.6	1,200.4	0.00	0.00	
13,500.0	0.00	0.00	13,410.4	-212.0	-1,181.6	1,200.4	0.00	0.00	
13,600.0	0.00	0.00	13,510.4	-212.0	-1,181.6	1,200.4	0.00	0.00	
13,634.6	0.00	0.00	13,545.0	-212.0	-1,181.6	1,200.4	0.00	0.00	Permit TD at 13,634.6' MD

## Planning Report

<b>Database:</b>	US EDM 2003.21 Multi User Db	<b>Local Co-ordinate Reference:</b>	Well 8505D-25 F25 496
<b>Company:</b>	EnCana Oil & Gas (USA) Inc	<b>TVD Reference:</b>	KBE @ 8320.0ft (Original Well Elev)
<b>Project:</b>	Story Gulch	<b>MD Reference:</b>	KBE @ 8320.0ft (Original Well Elev)
<b>Site:</b>	F25 496	<b>North Reference:</b>	True
<b>Well:</b>	8505D-25 F25 496	<b>Survey Calculation Method:</b>	Minimum Curvature
<b>Wellbore:</b>	DD		
<b>Design:</b>	Plan #1		

Targets									
Target Name	Dip Angle	Dip Dir.	TVD	+N/-S	+E/-W	Northing	Easting	Latitude	Longitude
- hit/miss target	(°)	(°)	(ft)	(ft)	(ft)	(ft)	(ft)		
- Shape									
8505D-25 F25 496 BHL - plan hits target center - Rectangle (sides W30.0 H50.0 D0.0)	0.00	0.00	12,045.0	-212.0	-1,181.6	1,680,906.33	2,261,449.61	39° 40' 24.94 N	108° 7' 26.81 W
8505D-25 F25 496 TGT - plan hits target center - Point	0.00	0.00	8,385.0	-212.0	-1,181.6	1,680,906.33	2,261,449.61	39° 40' 24.94 N	108° 7' 26.81 W

Formations						
Measured Depth	Vertical Depth	Name	Lithology	Dip	Dip Direction	
(ft)	(ft)			(°)	(°)	
1,659.4	1,645.0	Mahog Bench		0.00		
5,300.8	5,245.0	Was G		0.00		
8,434.6	8,345.0	Williams Fork		0.00		
8,474.6	8,385.0	Top of Gas		0.00		
9,134.6	9,045.0	Price GR		0.00		
11,534.6	11,445.0	Paludal		0.00		
12,134.6	12,045.0	Rollins		0.00		
12,464.6	12,375.0	Cozzette		0.00		
12,654.6	12,565.0	Corcoran		0.00		
12,934.6	12,845.0	Sego		0.00		
13,134.6	13,045.0	L Sego		0.00		

Plan Annotations					
Measured Depth	Vertical Depth	Local Coordinates		Comment	
(ft)	(ft)	+N/-S (ft)	+E/-W (ft)		
200.0	200.0	0.0	0.0	KOP = 200'	
488.1	487.0	-3.8	-21.4	EOB at Inc. = 8.64°	
8,186.5	8,098.0	-208.2	-1,160.2	Start Drop -3.00	
8,474.6	8,385.0	-212.0	-1,181.6	EOD at Inc. = 0°	
12,384.6	12,295.0	-212.0	-1,181.6	TD at 12,384.6' MD	
13,634.6	13,545.0	-212.0	-1,181.6	Permit TD at 13,634.6' MD	