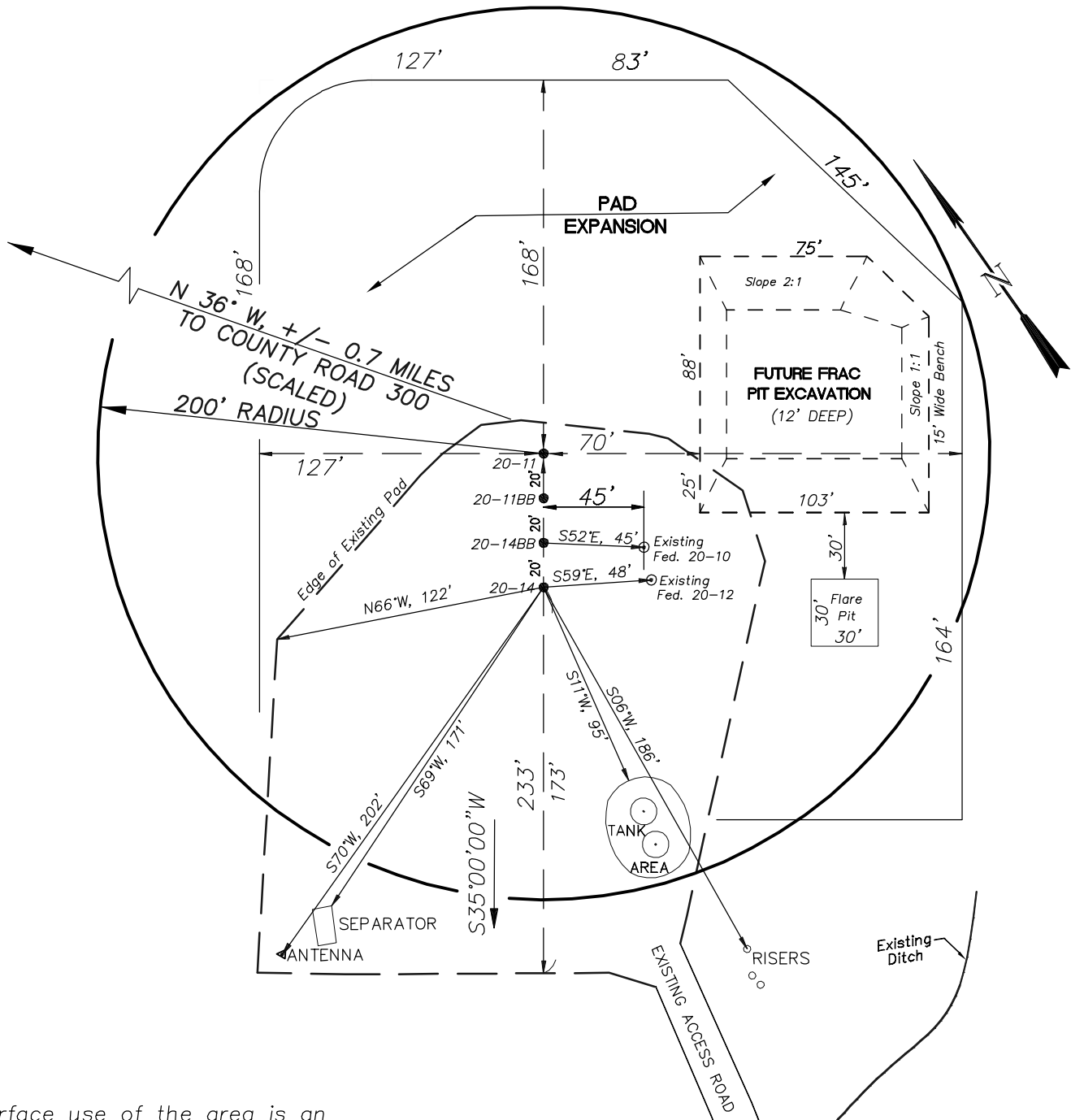


EnCana Oil & Gas (USA) Inc.

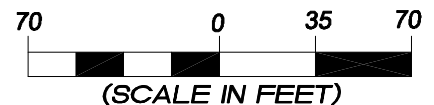
ADDENDUM TO LEGAL PLATS FOR

PN-20-7-95 Well Pad

SE1/4 SW1/4, SECTION 20, T 7 S, R 95 W, 6th P.M.



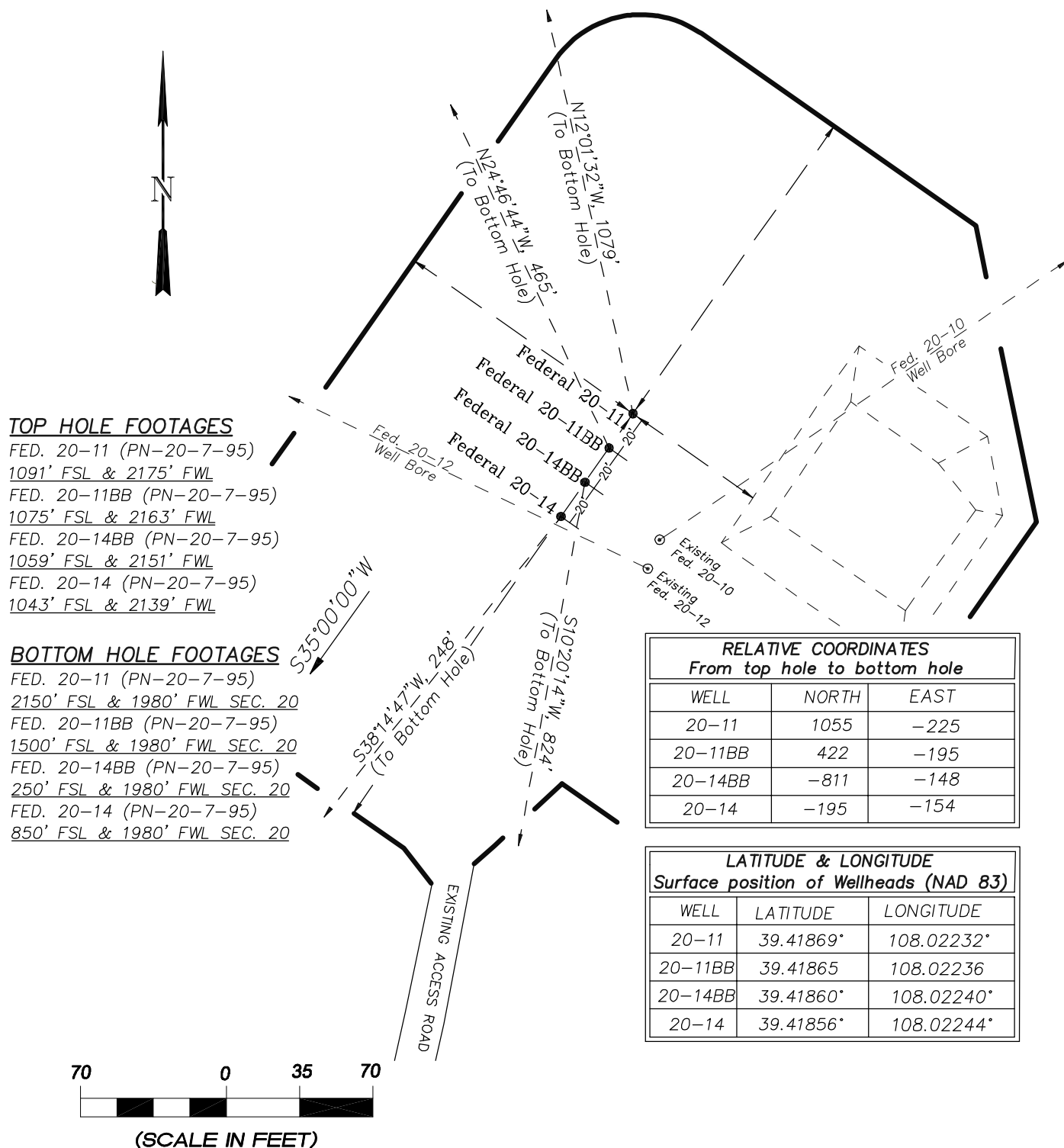
Surface use of the area is an existing well pad. Surrounding area of use is grazing. Vegetation consists mainly of sage brush, oak brush and native grasses.



906 Main Street
Evanston, Wyoming 82930
Phone No. (307) 789-4545

Addendum		Scale: 1" = 70'	SHEET 1e OF 10
Project No.	05-04-73	Date Surveyed: 6/03/08	
Date Drawn:	7/01/08	Latest Revision Date:	

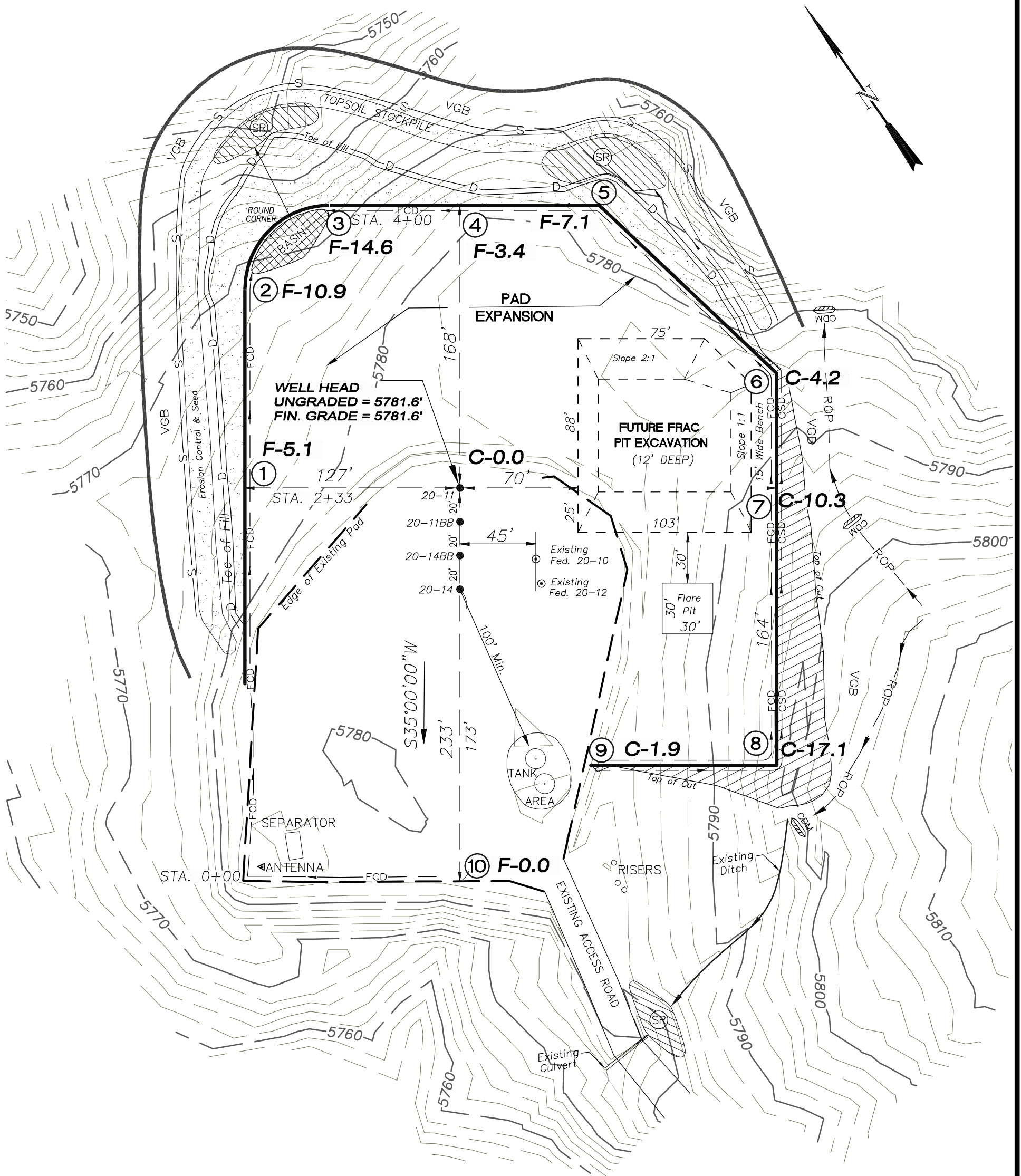
EnCana Oil & Gas (USA) Inc.
Well Pad (PN-20-7-95)
Section 20, T7S, R95W, 6th P.M.
WELL PAD INTERFERENCE PLAT



906 Main Street
 Evanston, Wyoming 82930
 Phone No. (307) 789-4545

Interference Plat		Scale: 1" = 70'	SHEET 2 OF 10
Project No.	05-04-73	Date Surveyed: 6/03/08	
Date Drawn:	7/01/08	Latest Revision Date:	

EnCana Oil & Gas (USA) Inc.
PN-20-7-95 Well Pad
SE1/4 SW1/4, SECTION 20, T 7S, R 95 W, 6th P.M.



Total Surface Disturbance = 4.74 Acres
(See Sheet 4 for Details)

NOTES:

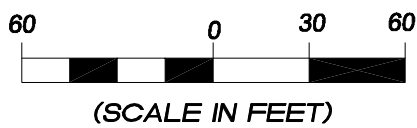
- (1) Slope Track and/or Terrace all Slopes and Piles
- (2) Erosion Control & Seed Topsoil
- (3) Erosion Control & Seed Outside
- (4) Slope away from Substructure Areas 1% to 3% to Flow Control

LEGEND

PARI = PAD/ACCESS ROAD INTERFACE
SR = SEDIMENT RESERVOIR
ST = SEDIMENT TRAP
R.O.P. = RUN-ON PROTECTION
— = PERIMETER CONTROL (WATTLES)
CSD = CUT SLOPE DIVERSION (BERM TOE OF CUT SLOPE)
D = FILL DIVERSION TO SEDIMENT TRAP
VGB = VEGETATION BUFFER (UNDISTURBED LAND INSIDE PC)
CDM = CHECK DAM
FCD = FLOW CONTROL DITCH
S = SLASH



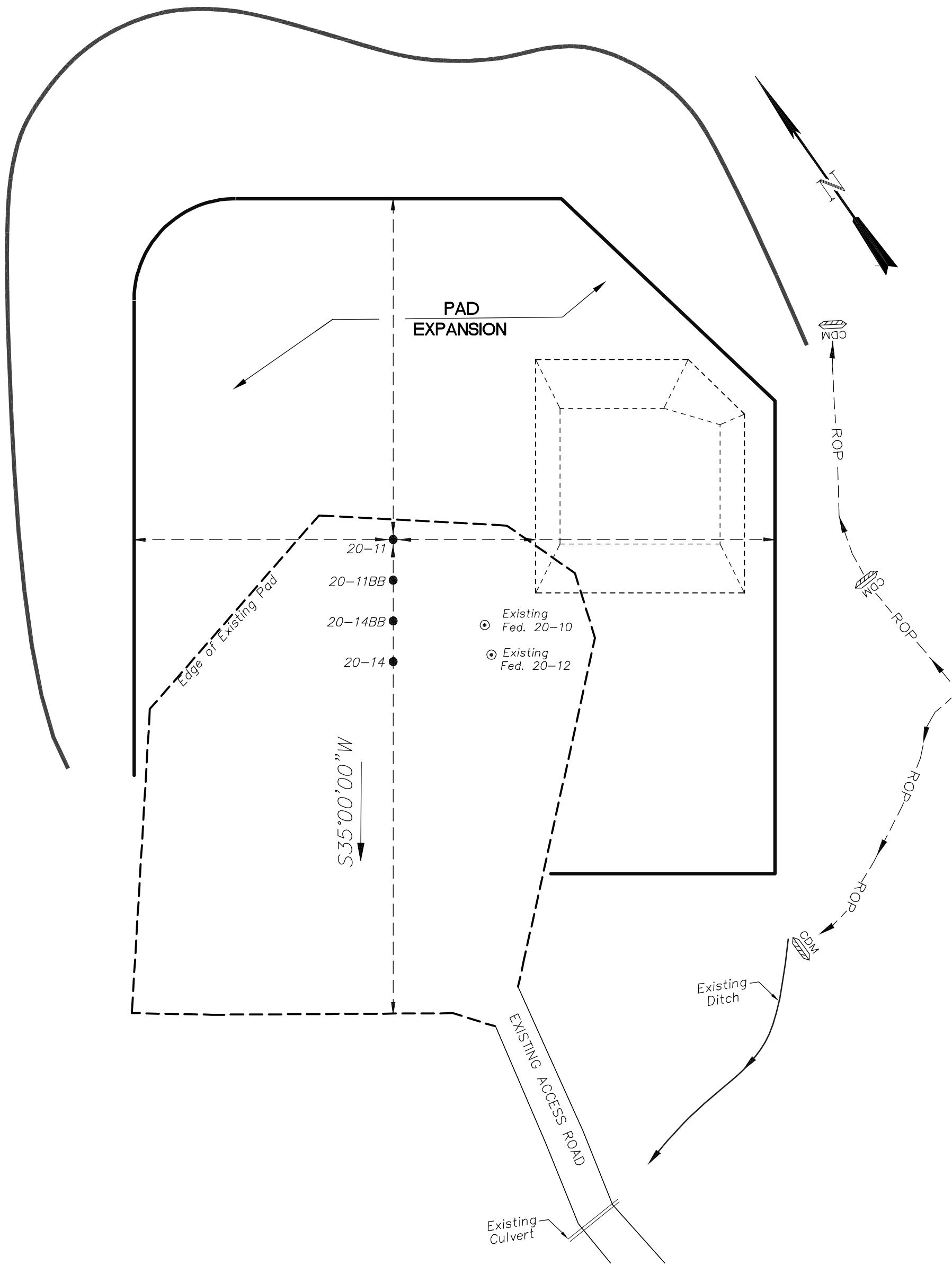
906 Main Street
Evanston, Wyoming 82930
Phone No. (307) 789-4545



Well Pad Layout		Scale: 1" = 60'	SHEET
Project No.	05-04-73	Date Surveyed: 6/03/08	3
Date Drawn: 7/01/08		Latest Revision Date:	OF 10

EnCana Oil & Gas (USA) Inc.
PN-20-7-95 Well Pad
SE1/4 SW1/4, SECTION 20, T 7S, R 95 W, 6th P.M.

PRE-CONSTRUCTION PLAT



Total Surface Disturbance = 4.74 Acres
(See Sheet 4 for Details)

- NOTES;
- (1) Slope Track and/or Terrace all Slopes and Piles
 - (2) Erosion Control & Seed Topsoil
 - (3) Erosion Control & Seed Outside
 - (4) Slope away from Substructure Areas 1% to 3% to Flow Control

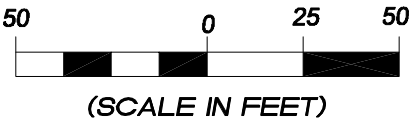
LEGEND
PARI = PAD/ACCESS ROAD INTERFACE
SR = SEDIMENT RESERVOIR
ST = SEDIMENT TRAP
R.O.P. = RUN-ON PROTECTION
— = PERIMETER CONTROL (WATTLES)
CSD = CUT SLOPE DIVERSION (BERM TOE OF CUT SLOPE)
D = FILL DIVERSION TO SEDIMENT TRAP
VGB = VEGETATION BUFFER (UNDISTURBED LAND INSIDE PC)
CDM = CHECK DAM
FCD = FLOW CONTROL DITCH

PRE-CONSTRUCTION PHASE COMPLETE,
AUTHORIZATION TO CONTINUE
CONSTRUCTION.

SIGNATURE: _____



906 Main Street
Evanston, Wyoming 82930
Phone No. (307) 789-4545

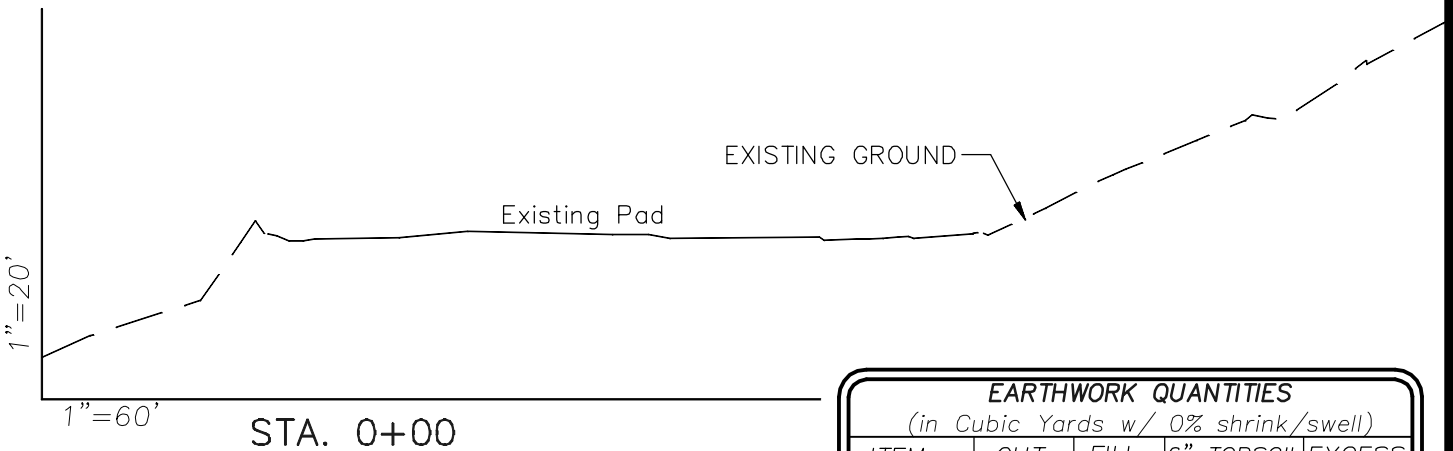
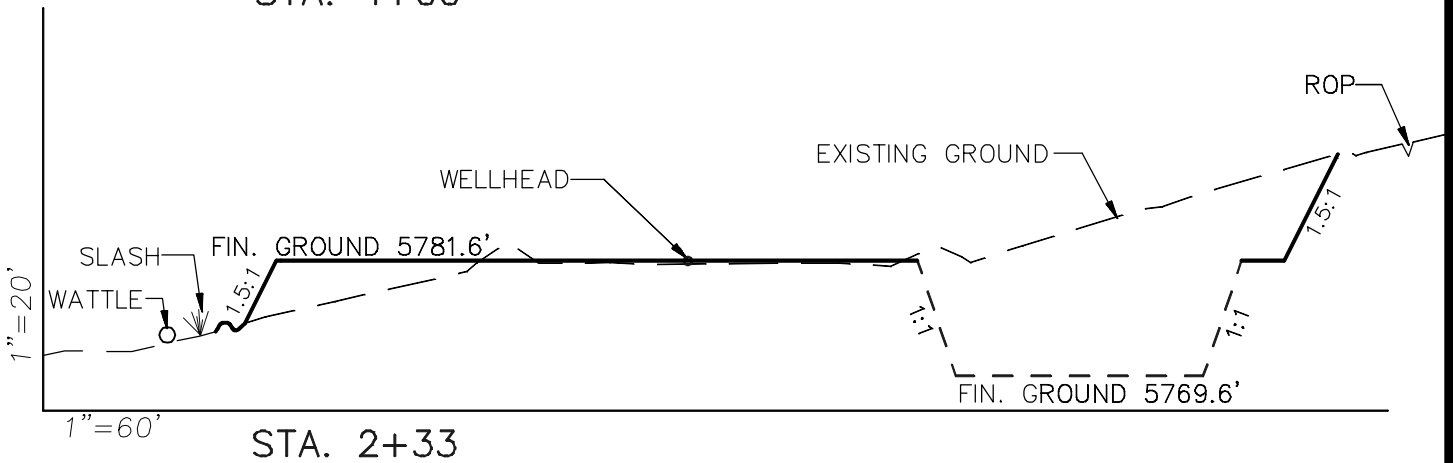
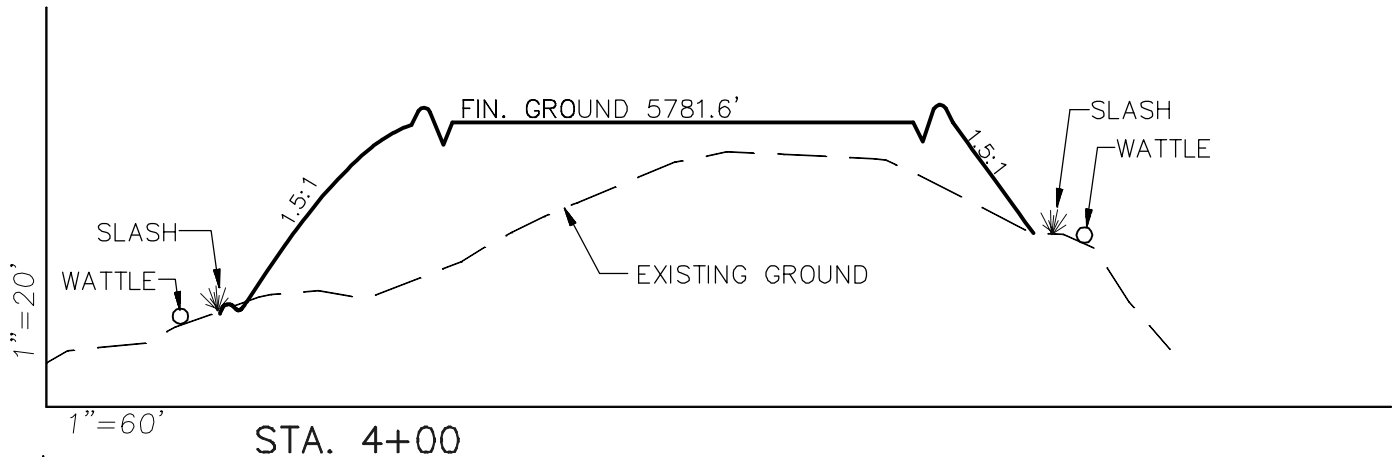


Pre-Construction		Scale: 1" = 50'	SHEET 3a OF 10
Project No.	05-04-73	Date Surveyed: 6/03/08	
Date Drawn: 7/01/08		Latest Revision Date:	

EnCana Oil & Gas (USA) Inc.

Well Pad (PN-20-7-95)

CROSS SECTIONS



EARTHWORK QUANTITIES

(in Cubic Yards w/ 0% shrink/swell)

ITEM	CUT	FILL	6" TOPSOIL	EXCESS
PAD	6952	6610	Topsoil not included in Excavation	342
PIT	N/A	0		N/A
TOTALS	6952	6610	1542	342

NOTE:

ALL CUT/FILL SLOPES
ARE AT 1.5:1 UNLESS
OTHERWISE NOTED.



906 Main Street
Evanston, Wyoming 82930
Phone No. (307) 789-4545

Cross Sections

Project No. 05-04-73
Date Drawn: 7/01/08

Scale: As Shown

Date Surveyed: 6/03/08
Latest Revision Date:

SHEET

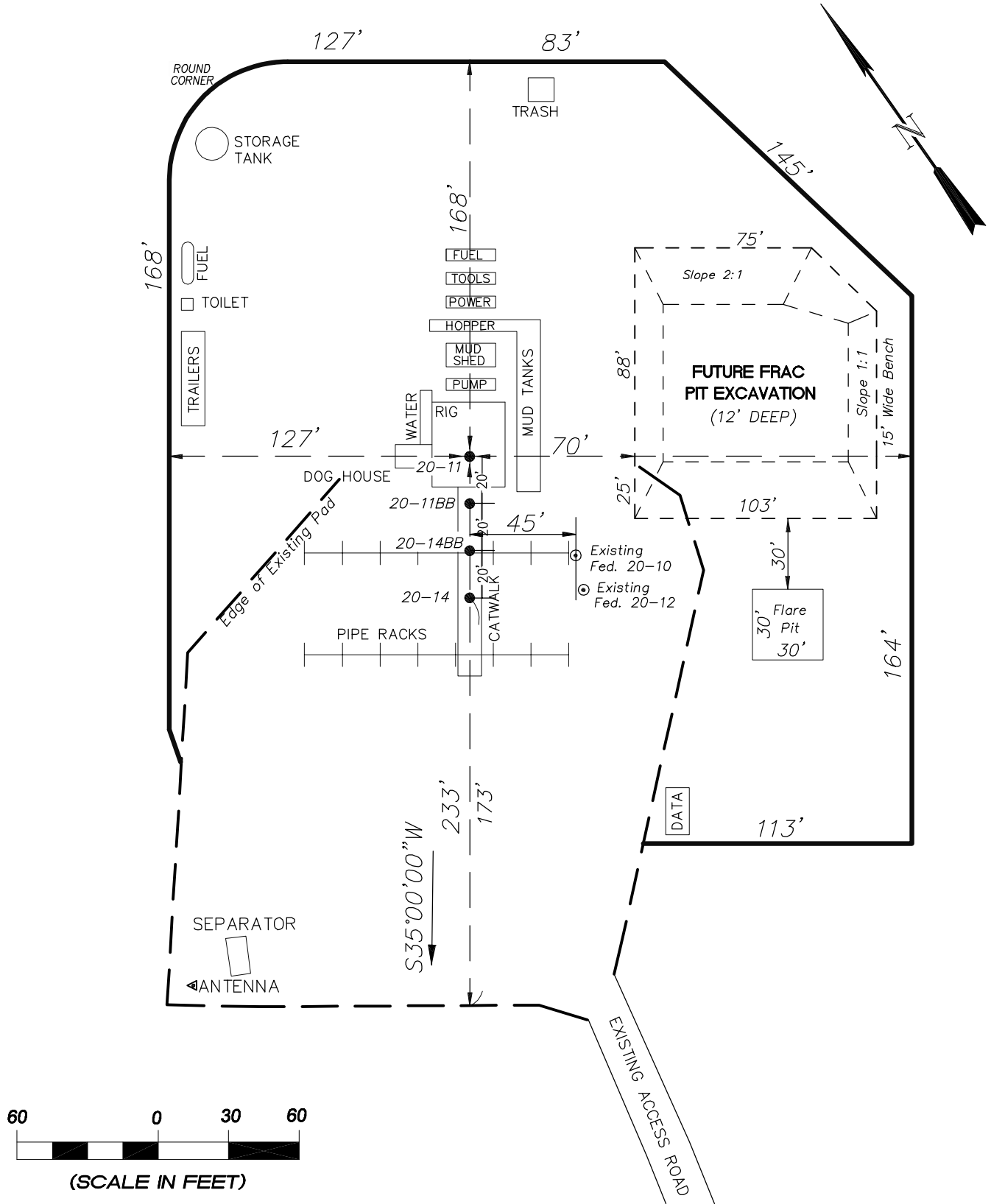
4

OF 10

EnCana Oil & Gas (USA) Inc.

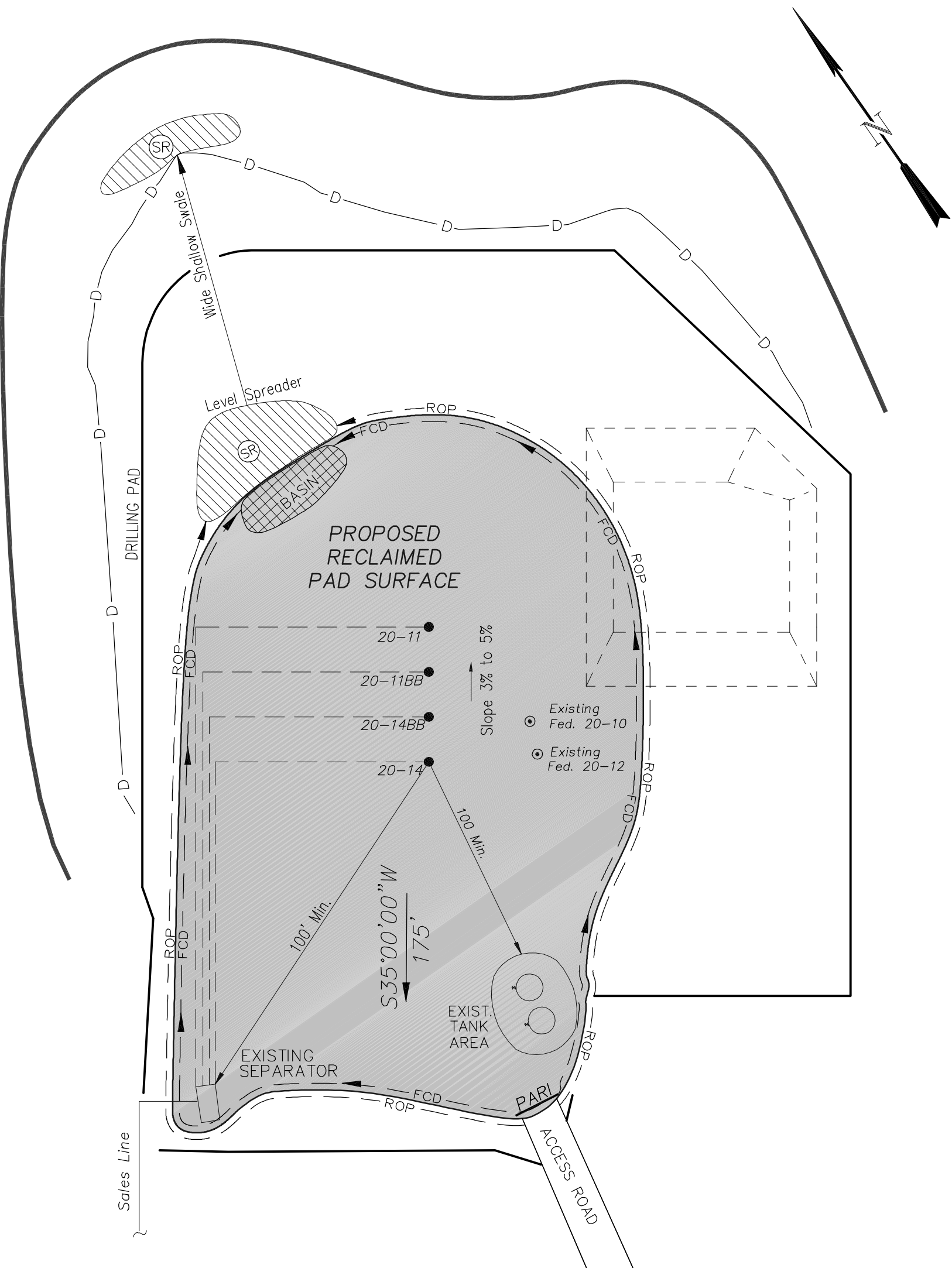
Well Pad (PN-20-7-95)

TYPICAL RIG LAYOUT



EnCana Oil & Gas (USA) Inc.
PN-20-7-95 Well Pad

PRODUCTION SCHEMATIC



- NOTES:
1. Set Tanks High so pad Entrance & Tan Area Can Drain to Pad Basin
 2. Gravel Pad 75' from Wells & Around Tanks and Separators
 3. Pad Drains to Pad Basin at a 3% to 5% slope
 4. BMP Selection and Position may change Depending on Actual Conditions Encountered During the Construction Process

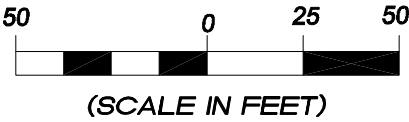
NOTE:
Actual Equipment Layout and Reclaimed Pad Surface Area May Change do to Production Requirements or Site Conditions.

AREA OF PROPOSED
RECLAIMED PAD SURFACE
= 1.28 ACRES

- LEGEND
- PARI = PAD/ACCESS ROAD INTERFACE
 - SR = SEDIMENT RESERVOIR
 - ST = SEDIMENT TRAP
 - R.O.P. = RUN-ON PROTECTION
 - = PERIMETER CONTROL (WATTLES)
 - CSD = CUT SLOPE DIVERSION (BERM TOE OF CUT SLOPE)
 - D = FILL DIVERSION TO SEDIMENT TRAP
 - VGB = VEGETATION BUFFER (UNDISTURBED LAND INSIDE PC)
 - CDM = CHECK DAM
 - FCD = FLOW CONTROL DITCH
 - S = SLASH



906 Main Street
Evanston, Wyoming 82930
Phone No. (307) 789-4545



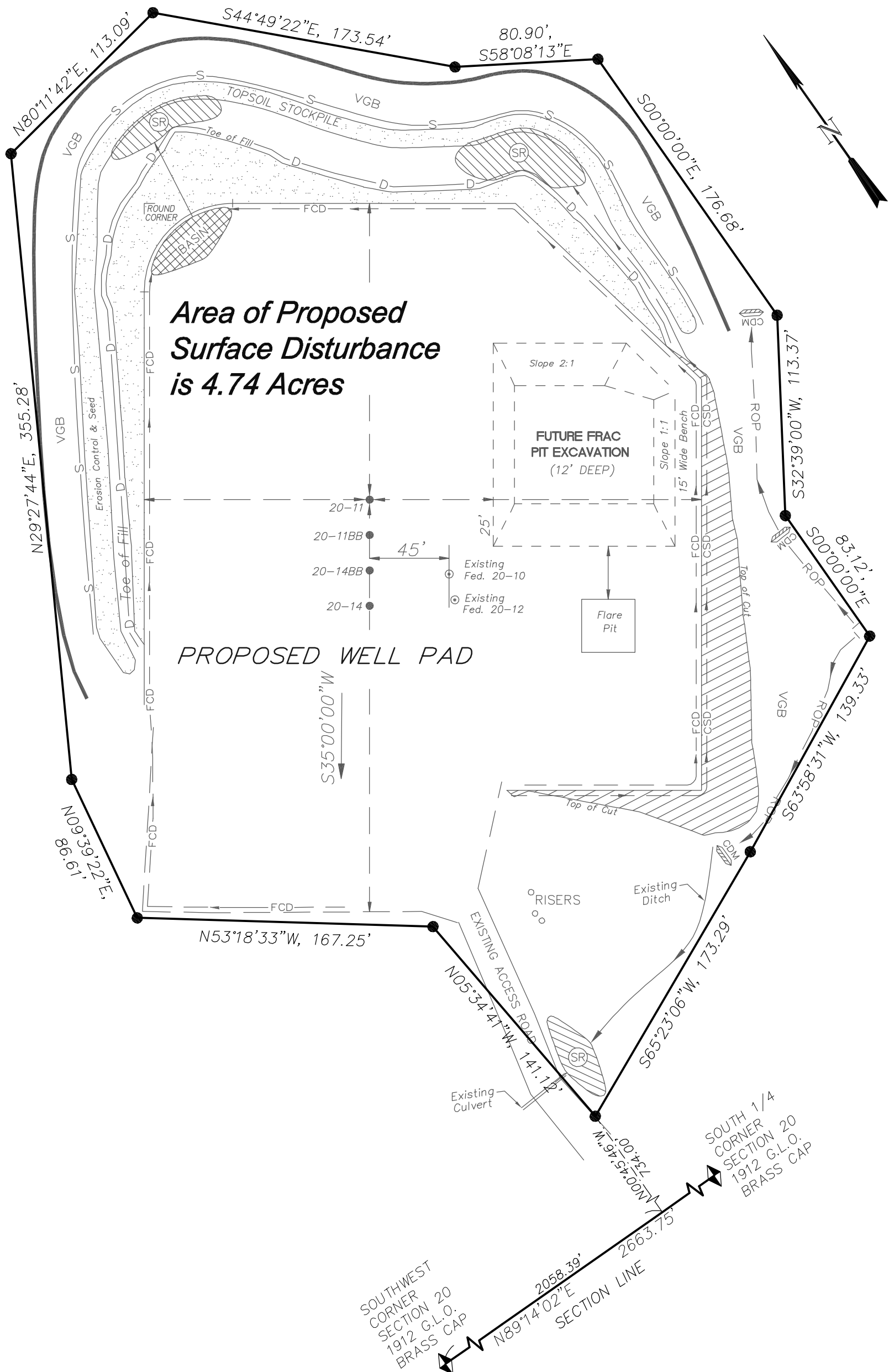
Disturbance		Scale: 1" = 50'		SHEET 6 OF 10
Project No.	05-04-73	Date Surveyed:	6/03/08	
Date Drawn:	7/01/08	Latest Revision Date:		

EnCana Oil & Gas (USA) Inc.

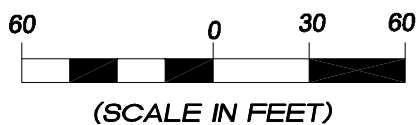
PN-20-7-95 Well Pad

SE1/4 SW1/4, SECTION 20, T 7S, R 95 W, 6th P.M.

SURFACE DISTURBANCE AREA



906 Main Street
Evanston, Wyoming 82930
Phone No. (307) 789-4545



Disturbance		Scale: 1" = 60'		SHEET 7 OF 10
Project No.	05-04-73	Date Surveyed:	6/03/08	
Date Drawn:	7/01/08	Latest Revision Date:		