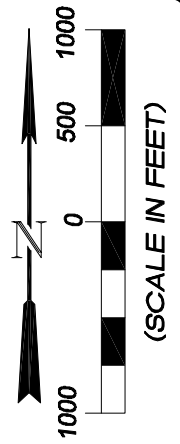


T7S, R95W, 6th P.M.

S89°52'03"W, 2646.37'

1995
PRIVATE
BRASS CAP

1982 BLM
ALUMINUM
CAP



NW 1/4

NE 1/4

WELL LOCATION:
FEDERAL 20-11 (PN-20-7-95)
ELEV. UNGRADED GROUND = 5781.6'

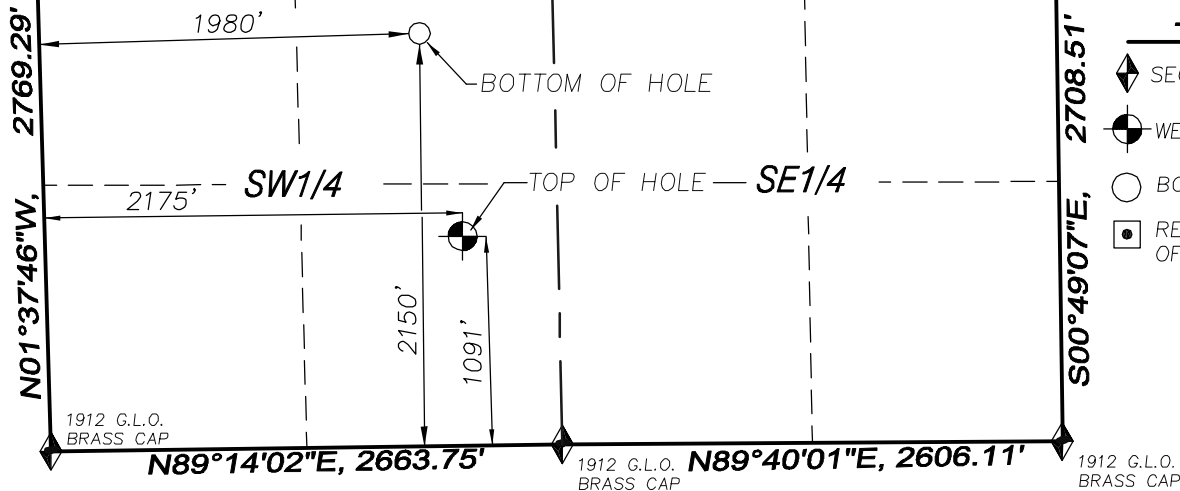
20

BLANK
BRASS CAP

1983 BLM
ALUMINUM
CAP

-LEGEND-

- SECTION CORNER LOCATED
- WELL PAD LOCATION
- BOTTOM HOLE LOCATION
- RECORD LOCATION OF CORNER



FEDERAL 20-11 (PN-20-7-95)
(WELLHEAD LOCATION) NAD 83
LATITUDE = 39.41869° N
LONGITUDE = 108.02232° W
(BOTTOM HOLE LOCATION) NAD 83
LATITUDE = 39.42159° N
LONGITUDE = 108.02313° W

CERTIFICATE OF SURVEYOR

I, TED TAGGART OF FRUITA, COLORADO HEREBY
CERTIFY THAT THIS MAP WAS MADE FROM NOTES
TAKEN DURING AN ACTUAL SURVEY MADE BY ME OR
UNDER MY DIRECTION FOR ENCANA OIL & GAS (USA)
INC. AND THAT THIS LOCATION HAS BEEN STAKED ON
THE GROUND AS SHOWN HEREON.



906 Main Street
Evanston, Wyoming 82930
Phone No. (307) 789-4545

NOTES

1. WELL FOOTAGES ARE MEASURED AT RIGHT ANGLES TO SECTION LINES.
2. BASIS OF BEARING: GEODETIC- BASED ON GPS OBSERVATIONS.
3. ELEVATIONS BASED ON GPS OBSERVATIONS, NAVD 88 (GEOID 03), POST PROCESSED USING NGS OPUS.
4. THE BOTTOM HOLE BEARS N12°01'32"W, 1079' FROM TOP OF HOLE.
5. SEE ADDENDUM TO LEGAL PLAT (SHEET 1e) FOR VISIBLE IMPROVEMENTS WITHIN 200 FEET OF THE PROPOSED WELLHEAD.
6. CONTROL FOR SURVEY WAS ESTABLISHED USING DIFFERENTIALLY CORRECTED GPS FROM AN OPUS BASED CONTROL NETWORK. WELL LOCATION WAS ESTABLISHED USING NON-GPS CONVENTIONAL METHODS, THEREFORE NO PDOP READING WAS TAKEN.

**MAP to ACCOMPANY
APPLICATION for PERMIT to DRILL
EnCana Oil & Gas (USA) Inc.
Federal 20-11 (PN-20-7-95) Well**

SE1/4 SW1/4, SECTION 20

T7S, R95W, 6th P.M.

GARFIELD COUNTY, COLORADO

Location Plat		Scale: 1" = 1000'	SHEET 1a OF 10
Project No.	05-04-73	Date Surveyed: 6/03/08	
Date Drawn:	7/01/08	Latest Revision Date:	