

# ENSIGN

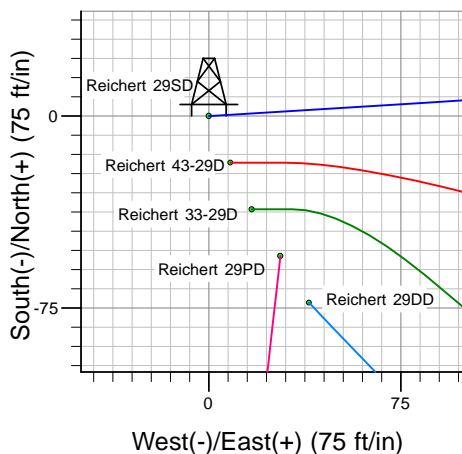
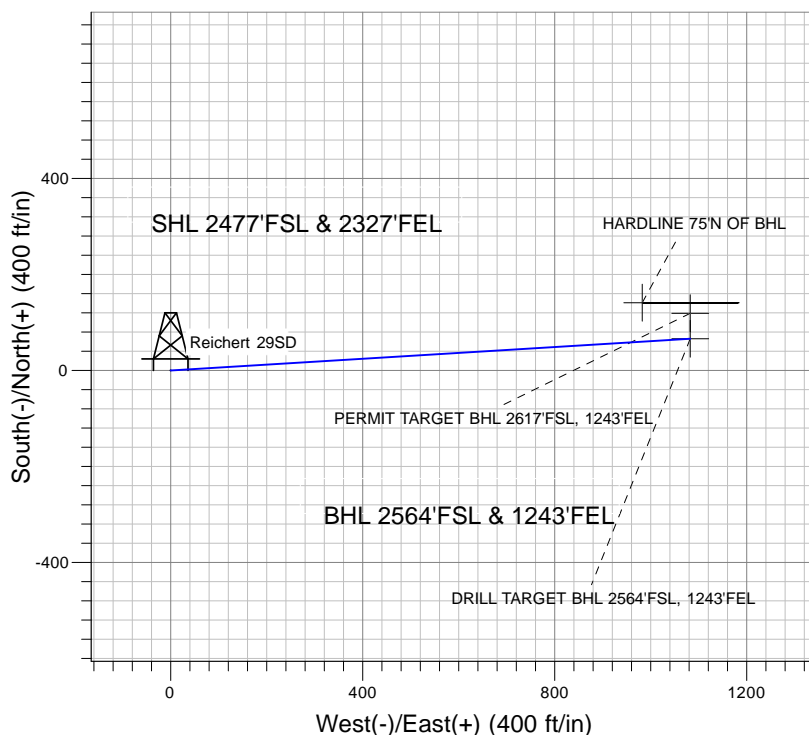
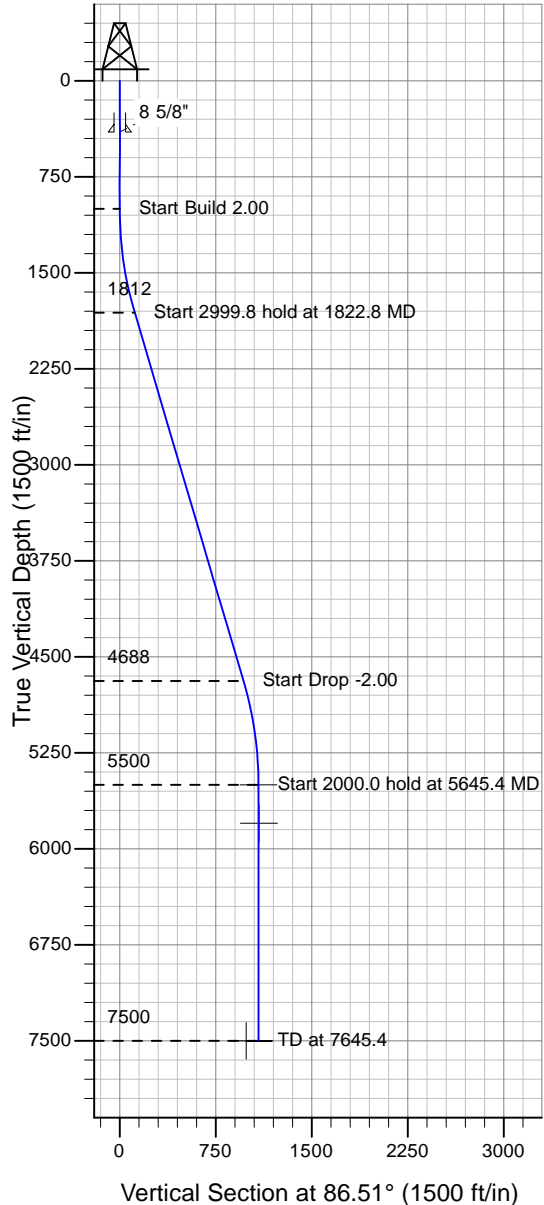
## Directional

### Well Name: Reichert 29SD

Surface Location: Reichert Pad Sec.29-T4N-R67W  
 North American Datum 1983 , US State Plane 1983 , Colorado Northern Zone  
 Ground Elevation: 4970.0

+N/-S+E/-W Northing Easting Latitude Longitude Slot  
 0.0 0.0 1346715.94 3163605.94 40° 17' 1.140 N 104° 54' 48.852 W  
 Original Well Elev WELL @ 4983.0ft (Original Well Elev)

### PETROLEUM DEVELOPMENT CORP Weld County CO



Reichert Pad Sec.29-T4N-R67W  
 Reichert 29SD  
 Plan #1 (5-12-09)  
 15:56, May 29 2009



Azimuths to True North  
 Magnetic North: 9.18°  
 Magnetic Field  
 Strength: 53291.6snT  
 Dip Angle: 67.01°  
 Date: 5/12/2009  
 Model: IGRF200510

#### WELLBORE TARGET DETAILS (LAT/LONG)

Name	TVD	+N/-S	+E/-W	Latitude	Longitude	Shape
DRILL TARGET BHL 2564'FSL, 1243'FEL	5500.0	66.1	1082.5	40° 17' 1.793 N	104° 54' 34.884 W	Point
PERMIT TARGET BHL 2617'FSL, 1243'FEL	5800.0	119.1	1082.5	40° 17' 2.317 N	104° 54' 34.885 W	Point
HARDLINE 75'N OF BHL	7500.0	141.1	982.5	40° 17' 2.534 N	104° 54' 36.175 W	Polygon

#### SECTION DETAILS

Sec	MD	Inc	Azi	TVD	+N/-S	+E/-W	DLeg	TFace	VSec	Target
1	0.0	0.00	0.00	0.0	0.0	0.0	0.00	0.00	0.0	
2	1000.0	0.00	0.00	1000.0	0.0	0.0	0.00	0.00	0.0	
3	1822.8	16.46	86.51	1811.6	7.2	117.1	2.00	86.51	117.4	
4	4822.6	16.46	86.51	4688.4	58.9	965.4	0.00	0.00	967.2	
5	5645.4	0.00	0.00	5500.0	66.1	1082.5	2.00	180.00	1084.5	DRILL TARGET BHL 2564'FSL, 1243'FEL
6	7645.4	0.00	0.00	7500.0	66.1	1082.5	0.00	0.00	1084.5	