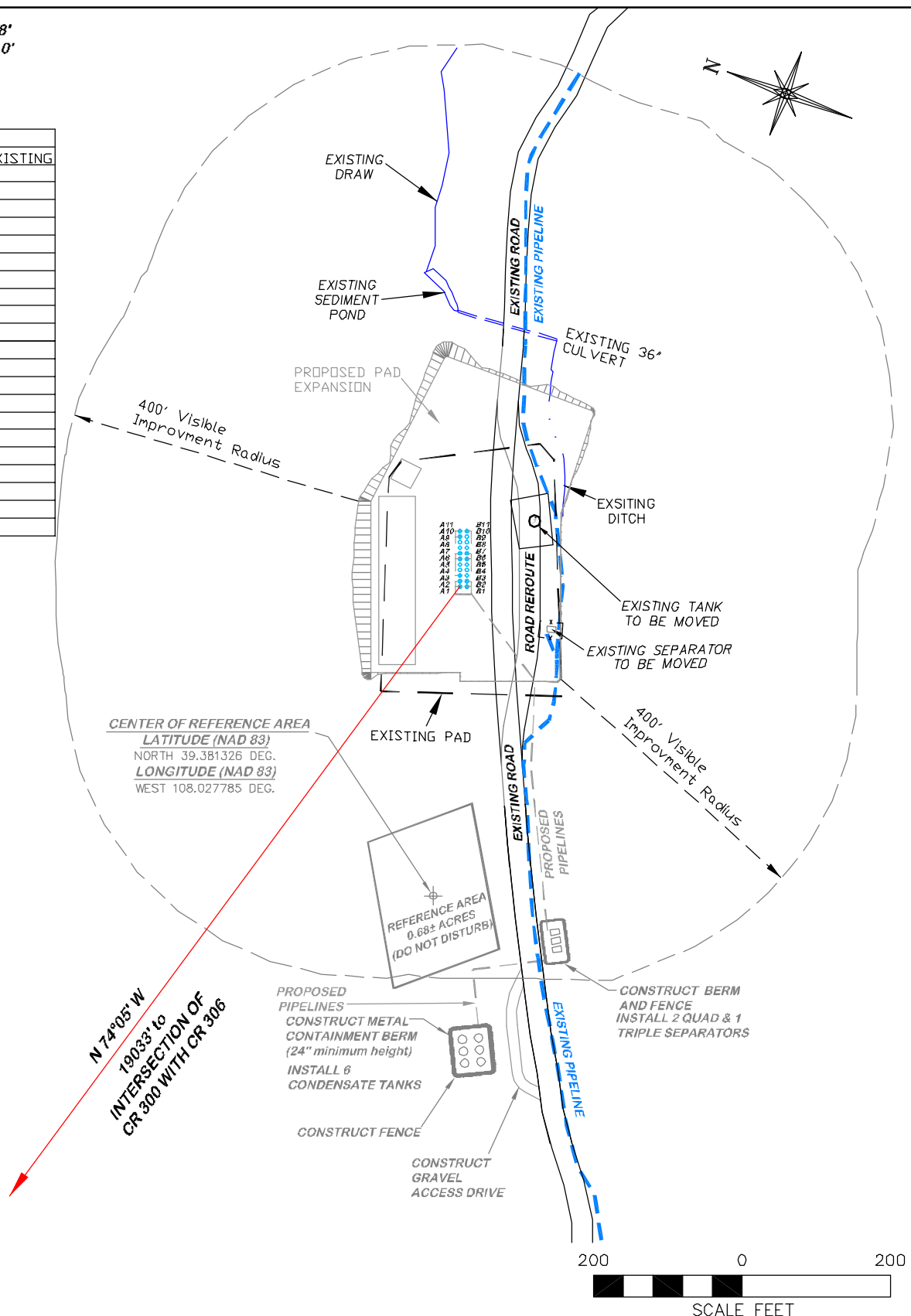


GRADED ELEVATION: 6342.8'  
 FINISHED ELEVATION: 6342.0'  
 ESTIMATED AREA OF NEW  
 DISTURBANCE = 1.1± ACES

SLOT	WELL NAME
A1	S. PARACHUTE FED 22-8 EXISTING
A2	SGV FED 7-41B
A3	SGV FED 7-41A
A4	OPEN
A5	OPEN
A6	SGV FED 6-44D
A7	SGV FED 6-44C
A8	OPEN
A9	OPEN
A10	SGV FED 8-11B
A11	SGV FED 8-11C
B1	SGV FED 7-41C
B2	SGV FED 8-12B
B3	OPEN
B4	OPEN
B5	OPEN
B6	SGV FED 8-12A
B7	SGV FED 8-11A
B8	OPEN
B9	OPEN
B10	OPEN
B11	SGV FED 8-11D



**BEFORE DIGGING  
 CALL FOR  
 UTILITY LINE LOCATION**

**SGV 8D PAD**



**RIFFIN & ASSOCIATES, INC.**  
 1414 ELK ST., ROCK SPRINGS, WY 82901

(307) 362-5028

DRAWN: 3/09/09 - WWG

SCALE: 1" = 200'

REVISED: 12/04/09 - RCR

DRG JOB No. 13846

REVISE TITLBLOCK

EXHIBIT 2D

### LOCATION DRAWING

**NOBLE ENERGY, INC.**  
**SGV FEDERAL 6-44C, 6-44D, 7-41A, 7-41B, 7-41C, 8-11A, 8-11B, 8-11C, 8-11D, 8-12A, 8-12B**  
**NW1/4 OF NW1/4 OF SECTION 8, T8S, R95W, 6th P.M., GARFIELD COUNTY, COLORADO**