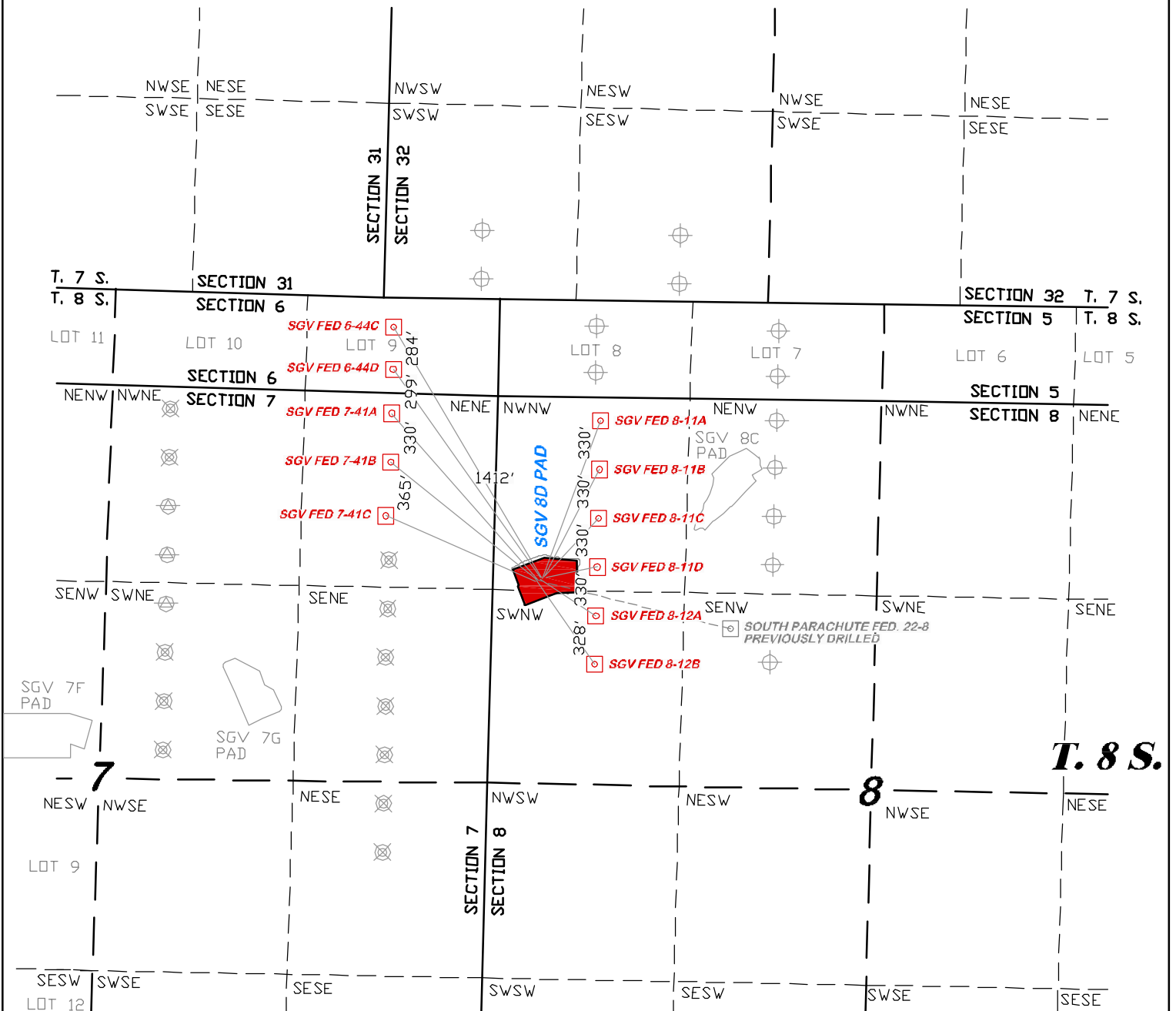
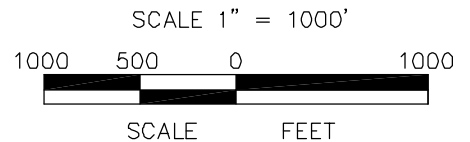
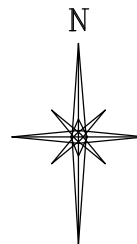


R. 95 W.



LEGEND

- PROPOSED BOTTOM HOLE LOCATION FOR 8D PAD
- ⊕ BOTTOM HOLE LOCATION FOR NOBLE SGV 8C PAD
- ⊗ BOTTOM HOLE LOCATION FOR NOBLE SGV 7F PAD
- ⊙ BOTTOM HOLE LOCATION FOR NOBLE SGV 7G PAD



SGV 8D PAD



RIFFIN & ASSOCIATES, INC.
1414 ELK ST., ROCK SPRINGS, WY 82901

(307) 362-5028

DRAWN: 3/06/09 - WWG

SCALE: 1" = 1000'

REVISED: 12/4/09 - RCR

DRG JOB No. 13846

ADD ADJACENT WELLS

EXHIBIT 4

MULTI-WELL PLAN

NOBLE ENERGY, INC.
SGV FEDERAL 6-44C, 6-44D, 7-41A, 7-41B, 7-41C, 8-11A, 8-11B, 8-11C, 8-11D, 8-12A, 8-12B
NW1/4 OF NW1/4 OF SECTION 8, T8S, R95W, 6th P.M., GARFIELD COUNTY, COLORADO