

GRADED ELEVATION: 6342.8'  
FINISHED ELEVATION: 6342.0'  
ESTIMATED AREA OF NEW  
DISTURBANCE = 1.1± ACES

SLOT	WELL NAME
A1	S. PARACHUTE FED 22-8 EXISTING
A2	SGV FED 7-41B
A3	SGV FED 7-41A
A4	OPEN
A5	OPEN
A6	SGV FED 6-44D
A7	SGV FED 6-44C
A8	OPEN
A9	OPEN
A10	SGV FED 8-11B
A11	SGV FED 8-11C
B1	SGV FED 7-41C
B2	SGV FED 8-12B
B3	OPEN
B4	OPEN
B5	OPEN
B6	SGV FED 8-12A
B7	SGV FED 8-11A
B8	OPEN
B9	OPEN
B10	OPEN
B11	SGV FED 8-11D

N 27°44'19" E  
819' TO BHL

N 20°23'55" E  
1147' TO BHL

N 42°19'00" E  
528' TO BHL

N 78°45'35" E  
352' TO BHL

N 30°33'36" W  
1967' TO BHL

N 35°12'00" W  
1728' TO BHL

N 41°14'59" W  
1491' TO BHL

N 51°05'13" W  
1263' TO BHL

N 66°29'40" W  
1108' TO BHL

**BEFORE DIGGING  
CALL FOR  
UTILITY LINE LOCATION**

NOTE: THE EARTH QUANTITIES ON  
THIS DRAWING ARE ESTIMATED  
AND THE USE OF IS AT THE  
RESPONSIBILITY OF THE USER.

SGV 8D PAD

**DRG** RIFFIN & ASSOCIATES, INC.  
1414 ELK ST., ROCK SPRINGS, WY 82901  
(307) 362-5028

SCALE: 1" = 100'

DRG JOB No. 13846

EXHIBIT 2

DRAWN: 3/09/09 - WWG

REVISED: 11/5/09 - WWG

PAD & VOLUMES REVISION

SCALE: 1" = 100'

DRG JOB No. 13846

EXHIBIT 2

# CONSTRUCTION LAYOUT DRAWING 1 OF 5

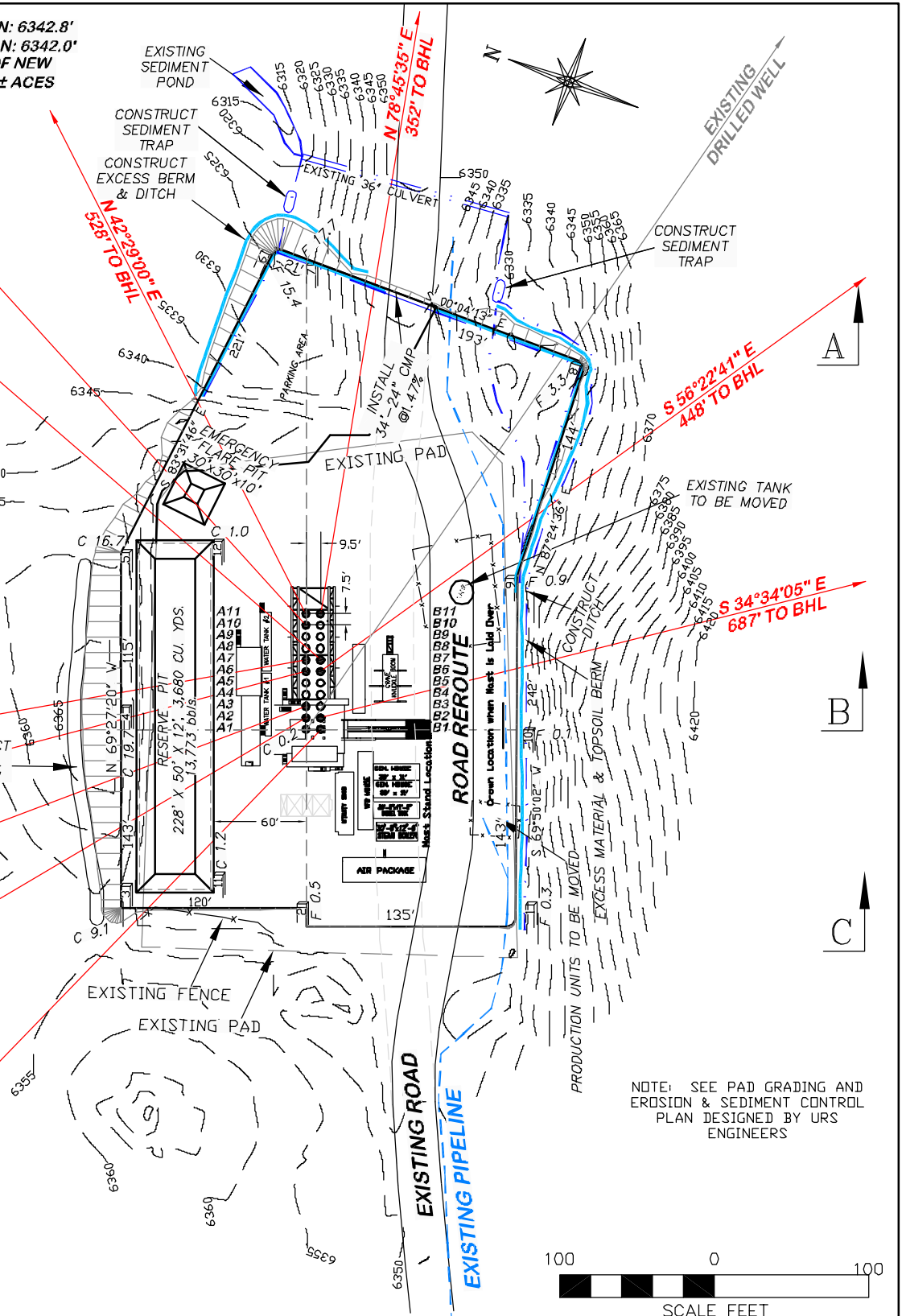
NOBLE ENERGY, INC.

SGV FEDERAL 6-44C, 6-44D, 7-41A, 7-41B, 7-41C, 8-11A, 8-11B,  
8-11C, 8-11D, 8-12A, 8-12B

NW1/4 OF NW1/4 OF SECTION 8, T8S, R95W, 6th P.M.,  
GARFIELD COUNTY, COLORADO

## ESTIMATED EARTHWORK

ITEM	CUT	FILL	TOPSOIL	EXCESS
PAD	5354 CY	4749 CY	588 CY	17 CY
PIT	3680 CY			3680 CY
TOTALS	9034 CY	4749 CY	588 CY	3697 CY



NOTE: SEE PAD GRADING AND  
EROSION & SEDIMENT CONTROL  
PLAN DESIGNED BY URS  
ENGINEERS

GRADED ELEVATION: 6342.8'  
FINISHED ELEVATION: 6342.0'  
ESTIMATED AREA OF NEW  
DISTURBANCE = 1.1± ACES

SLOT	WELL NAME
A1	S. PARACHUTE FED 22-8 EXISTING
A2	SGV FED 7-41B
A3	SGV FED 7-41A
A4	OPEN
A5	OPEN
A6	SGV FED 6-44D
A7	SGV FED 6-44C
A8	OPEN
A9	OPEN
A10	SGV FED 8-11B
A11	SGV FED 8-11C
B1	SGV FED 7-41C
B2	SGV FED 8-12B
B3	OPEN
B4	OPEN
B5	OPEN
B6	SGV FED 8-12A
B7	SGV FED 8-11A
B8	OPEN
B9	OPEN
B10	OPEN
B11	SGV FED 8-11D

N 27°44'19" E  
819' TO BHL

N 20°23'55" E  
1147' TO BHL

N 42°29'00" E  
5289' TO BHL

N 78°45'35" E  
352' TO BHL

N 30°33'36" W  
1967' TO BHL

N 35°12'00" W  
1728' TO BHL

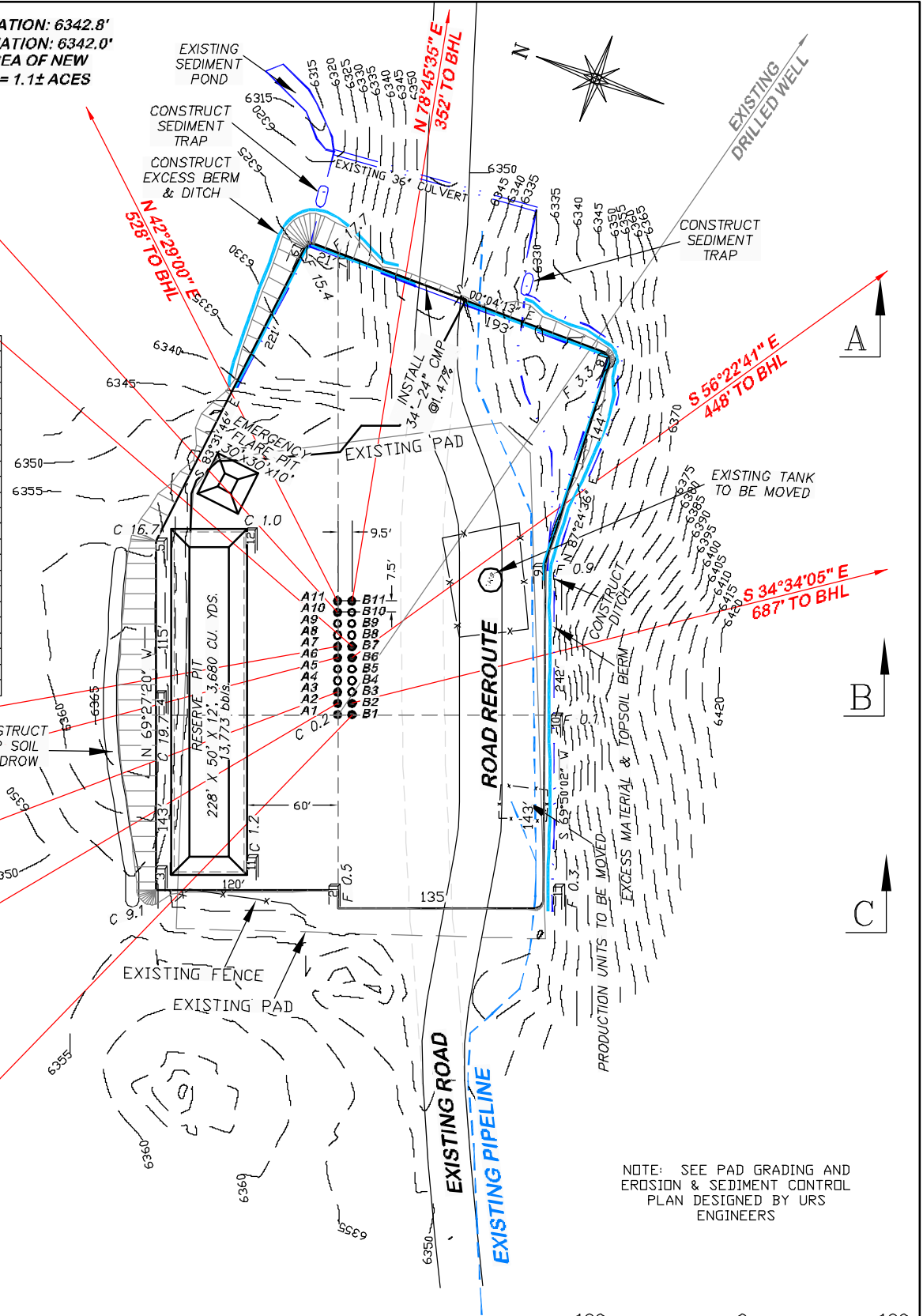
N 41°14'59" W  
1491' TO BHL

N 51°05'13" W  
1263' TO BHL

N 66°29'40" W  
1108' TO BHL

BEFORE DIGGING  
CALL FOR  
UTILITY LINE LOCATION

NOTE: THE EARTH QUANTITIES ON  
THIS DRAWING ARE ESTIMATED  
AND THE USE OF IS AT THE  
RESPONSIBILITY OF THE USER.



SGV 8D PAD

NOTE: SEE PAD GRADING AND  
EROSION & SEDIMENT CONTROL  
PLAN DESIGNED BY URS  
ENGINEERS

100 0 100  
SCALE FEET



**RIFFIN & ASSOCIATES, INC.**  
1414 ELK ST., ROCK SPRINGS, WY 82901

(307) 362-5028

DRAWN: 3/09/09 - WWG

SCALE: 1" = 100'

REVISED: 8/5/09 - WWG

DRG JOB No. 13846

PAD & VOLUMES REVISION

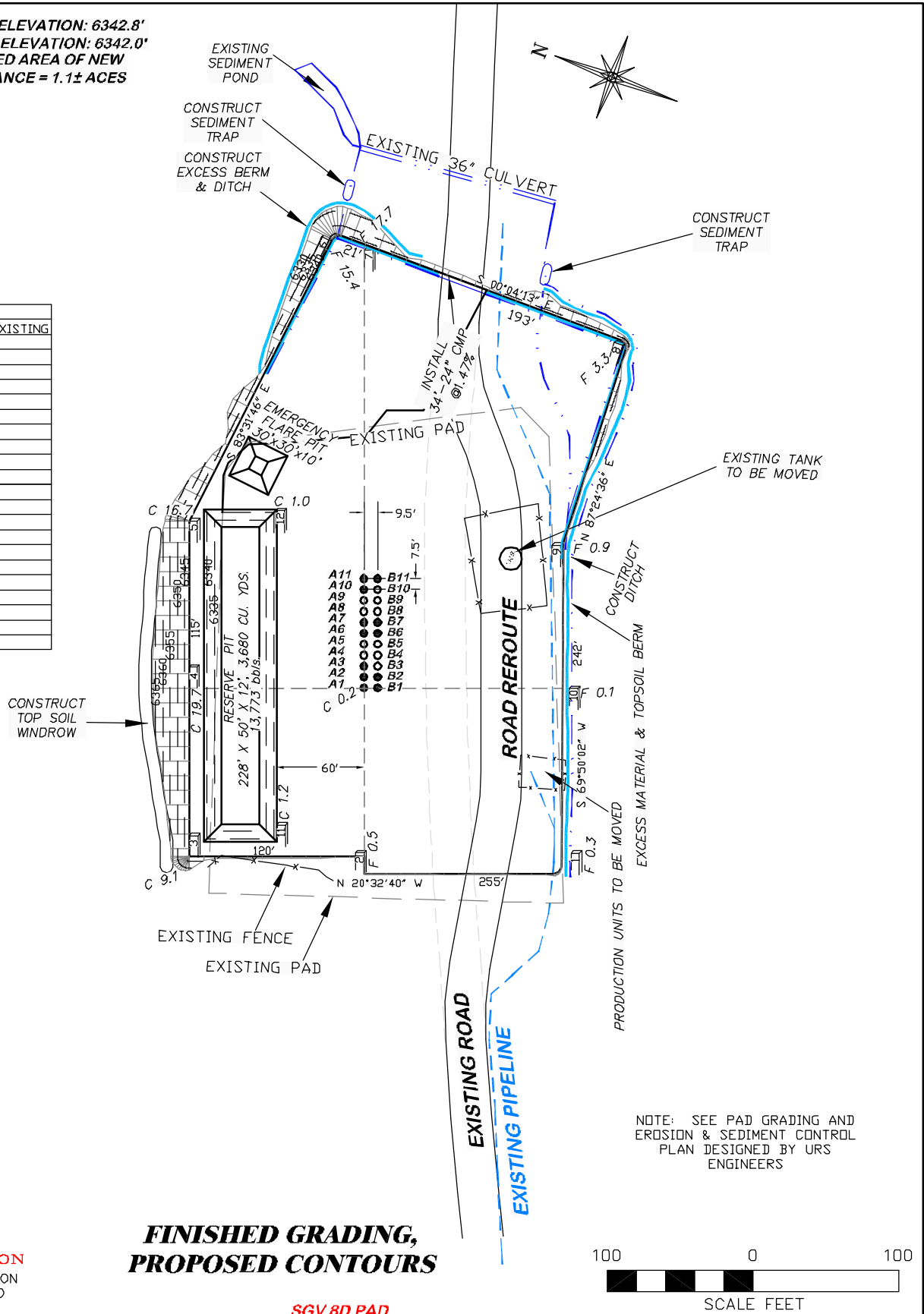
EXHIBIT 2A

CONSTRUCTION LAYOUT DRAWING 2 OF 5

**NOBLE ENERGY, INC.**  
**SGV FEDERAL 6-44C, 6-44D, 7-41A, 7-41B, 7-41C, 8-11A,**  
**8-11B, 8-11C, 8-11D, 8-12A, 8-12B**  
**NW1/4 OF NW1/4 OF SECTION 8, T8S, R9SW, 6th P.M.,**  
**GARFIELD COUNTY, COLORADO**

GRADED ELEVATION: 6342.8'  
FINISHED ELEVATION: 6342.0'  
ESTIMATED AREA OF NEW  
DISTURBANCE = 1.1± ACES

SLOT	WELL NAME
A1	S. PARACHUTE FED 22-8 EXISTING
A2	SGV FED 7-41B
A3	SGV FED 7-41A
A4	OPEN
A5	OPEN
A6	SGV FED 6-44D
A7	SGV FED 6-44C
A8	OPEN
A9	OPEN
A10	SGV FED 8-11B
A11	SGV FED 8-11C
B1	SGV FED 7-41C
B2	SGV FED 8-12B
B3	OPEN
B4	OPEN
B5	OPEN
B6	SGV FED 8-12A
B7	SGV FED 8-11A
B8	OPEN
B9	OPEN
B10	OPEN
B11	SGV FED 8-11D



**BEFORE DIGGING  
CALL FOR  
UTILITY LINE LOCATION**

NOTE: THE EARTH QUANTITIES ON  
THIS DRAWING ARE ESTIMATED  
AND THE USE OF IS AT THE  
RESPONSIBILITY OF THE USER.

**FINISHED GRADING,  
PROPOSED CONTOURS**

SGV 8D PAD



**DRG RIFFIN & ASSOCIATES, INC.**  
1414 ELK ST., ROCK SPRINGS, WY 82901

(307) 362-5028

DRAWN: 3/09/09 - WWG

REVISED: 8/5/09 - WWG

PAD & VOLUMES REVISION

SCALE: 1" = 100'

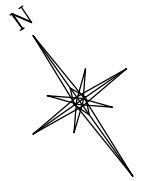
DRG JOB No. 13846

EXHIBIT 2B

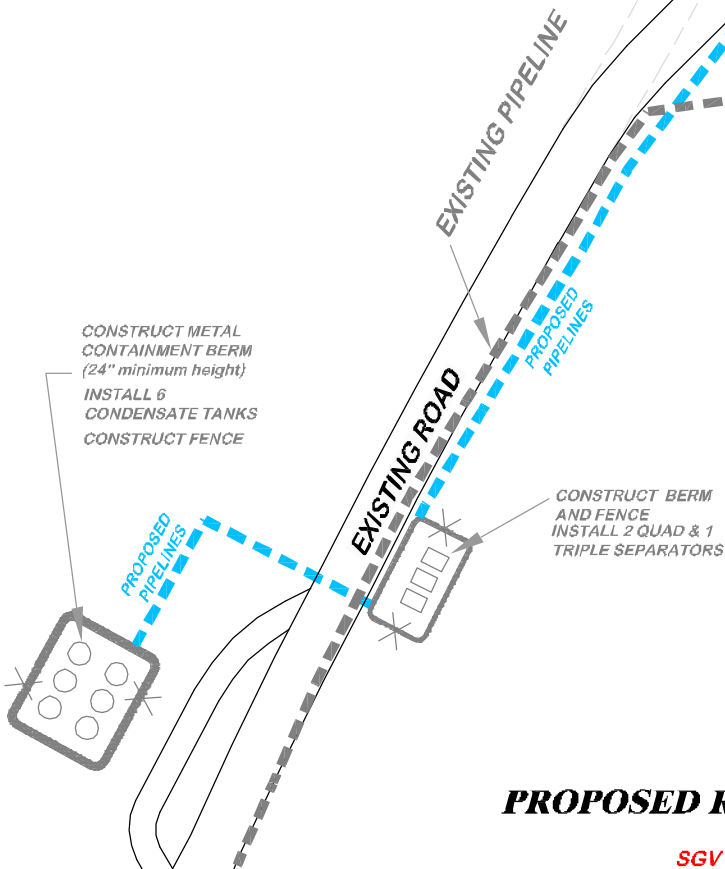
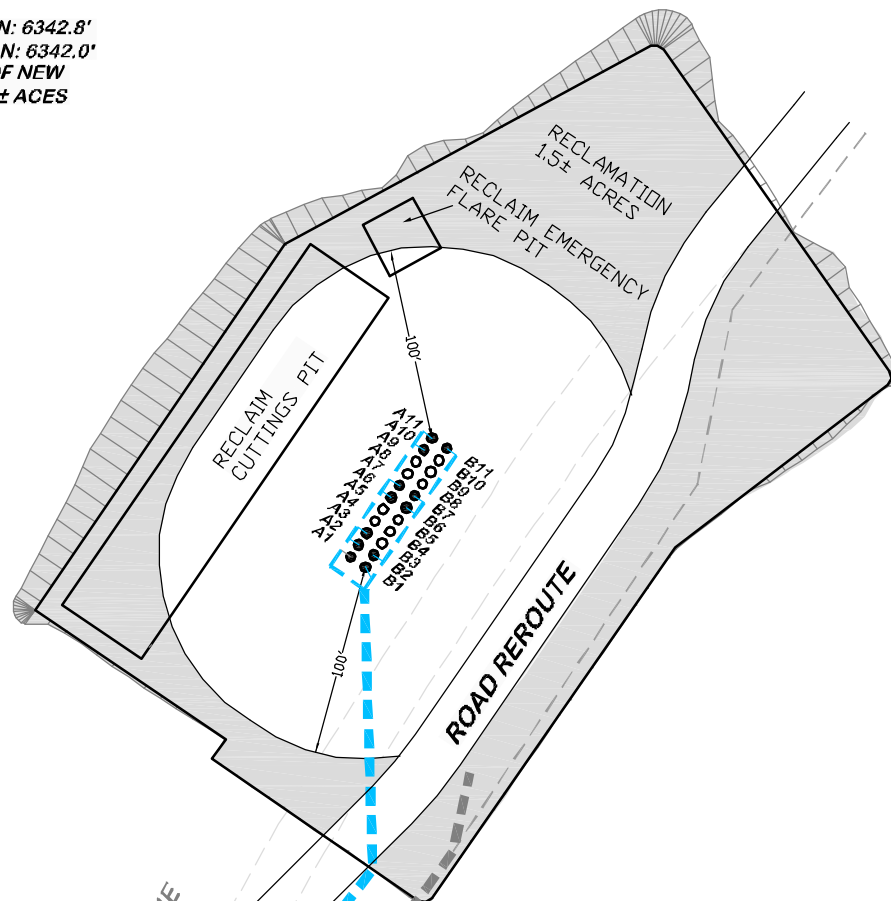
**CONSTRUCTION LAYOUT DRAWING 3 OF 5**

**NOBLE ENERGY, INC.**  
**SGV FEDERAL 6-44C, 6-44D, 7-41A, 7-41B, 7-41C, 8-11A,**  
**8-11B, 8-11C, 8-11D, 8-12A, 8-12B**  
**NW1/4 OF NW1/4 OF SECTION 8, T8S, R95W, 6th P.M.,**  
**GARFIELD COUNTY, COLORADO**

GRADED ELEVATION: 6342.8'  
 FINISHED ELEVATION: 6342.0'  
 ESTIMATED AREA OF NEW  
 DISTURBANCE = 1.1± ACES

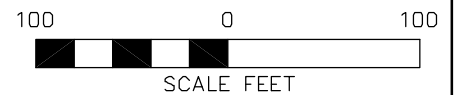


SLOT	WELL NAME
A1	S. PARACHUTE FED 22-8 EXISTING
A2	SGV FED 7-41B
A3	SGV FED 7-41A
A4	OPEN
A5	OPEN
A6	SGV FED 6-44D
A7	SGV FED 6-44C
A8	OPEN
A9	OPEN
A10	SGV FED 8-11B
A11	SGV FED 8-11C
B1	SGV FED 7-41C
B2	SGV FED 8-12B
B3	OPEN
B4	OPEN
B5	OPEN
B6	SGV FED 8-12A
B7	SGV FED 8-11A
B8	OPEN
B9	OPEN
B10	OPEN
B11	SGV FED 8-11D



## PROPOSED RECLAMATION

SGV 8D PAD



(307) 362-5028

**RIFFIN & ASSOCIATES, INC.**  
 1414 ELK ST., ROCK SPRINGS, WY 82901

DRAWN: 3/09/09 - WWG

REVISED: 8/5/09 - WWG

PAD & VOLUMES REVISION

SCALE: 1" = 100'

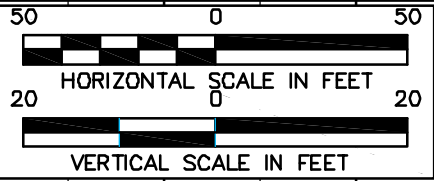
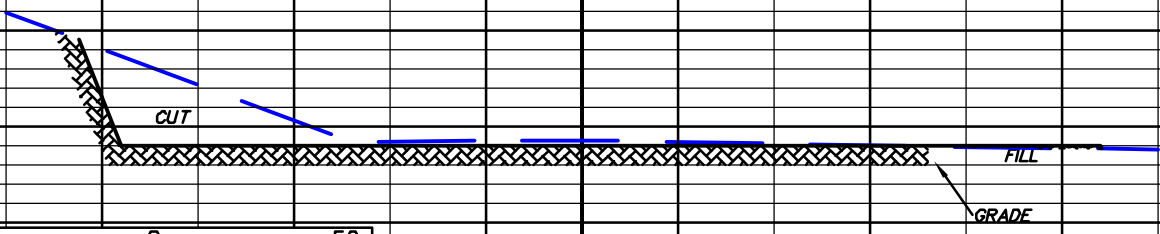
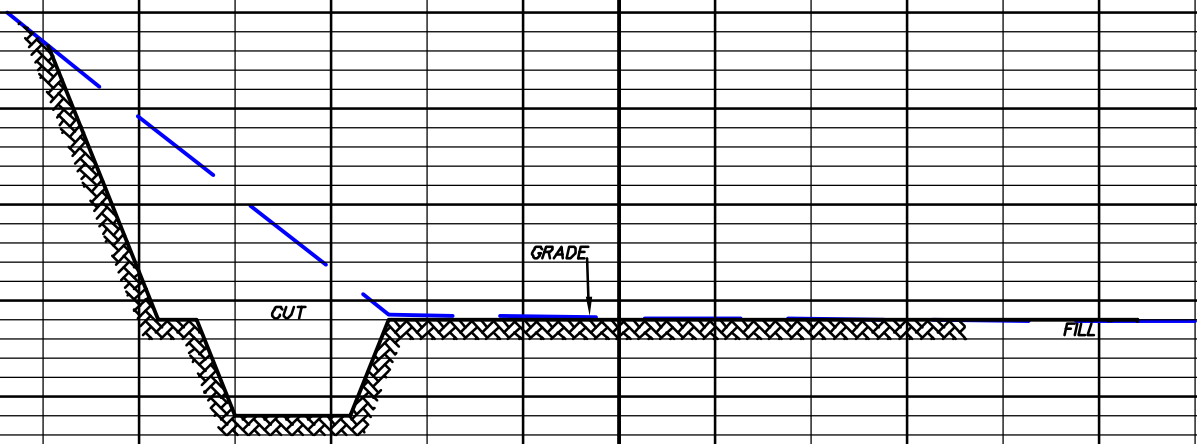
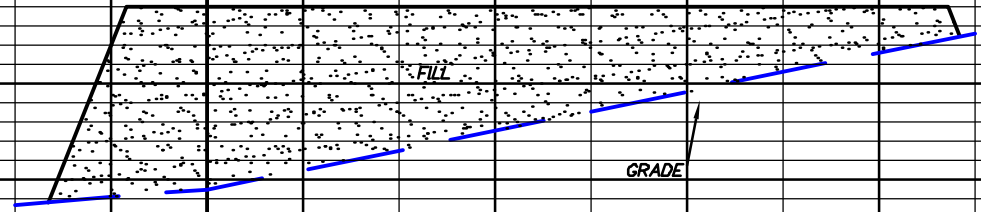
DRG JOB No. 13846

EXHIBIT 2C

## CONSTRUCTION LAYOUT DRAWING 4 OF 5

**NOBLE ENERGY, INC.**  
**SGV FEDERAL 6-44C, 6-44D, 7-41A, 7-41B, 7-41C, 8-11A,**  
**8-11B, 8-11C, 8-11D, 8-12A, 8-12B**  
**NW1/4 OF NW1/4 OF SECTION 8, T8S, R95W, 6th P.M.,**  
**GARFIELD COUNTY, COLORADO**

GRADED ELEVATION: 6342.8'  
FINISHED ELEVATION: 6342.0'



SGV 8D PAD



DRAWN: 3/09/09 - WWG

HORZ. 1" = 50' VERT. 1" = 20'

REVISED: 11/5/09 - WWG

DRG JOB No. 13846

PAD & VOLUME REVISION

EXHIBIT 3

**CONSTRUCTION LAYOUT 5 OF 5**

**NOBLE ENERGY, INC.**

**SGV FEDERAL 6-44C, 6-44D, 7-41A, 7-41B,  
7-41C, 8-11A, 8-11B, 8-11C, 8-11D, 8-12A, 8-12B.  
NW1/4 OF NW1/4 OF SECTION 8,  
T. 8 S. , R. 95 W., 6th P.M.  
GARFIELD COUNTY, COLORADO**

