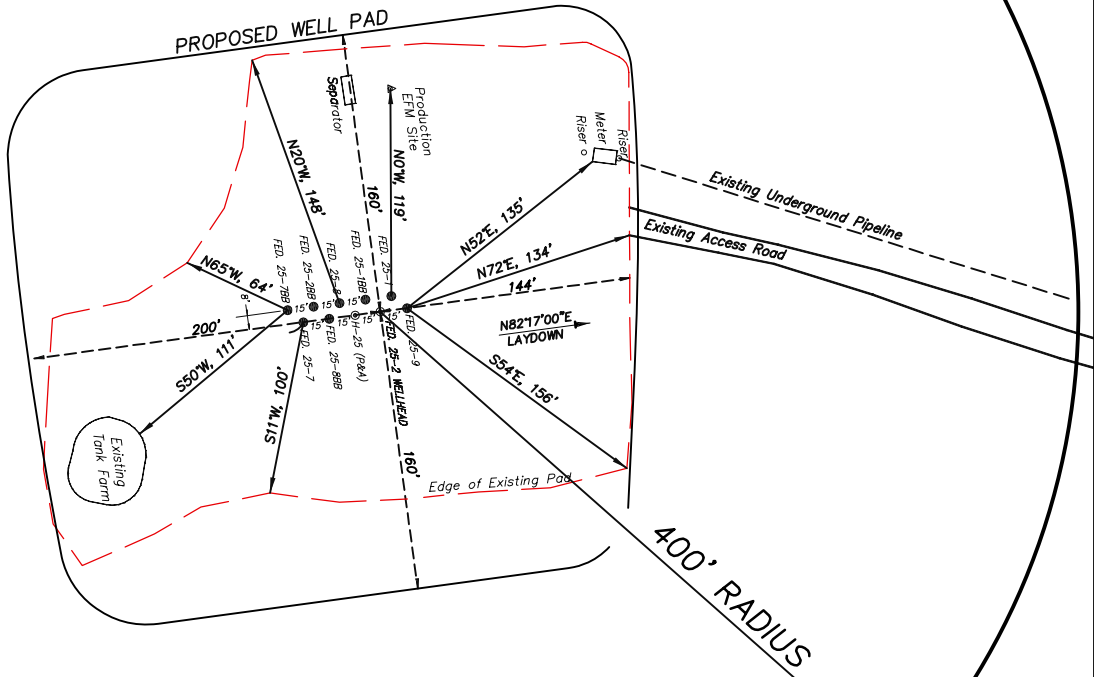


EnCana Oil & Gas (USA) Inc.
ADDENDUM TO LEGAL PLATS FOR
PH-25 Well Pad
SECTION 25, T 7 S, R 96 W, 6th P.M.

Surface use of the area is an existing well pad. Surrounding area of use is grazing. Vegetation consists mainly of sage brush, oak brush and native grasses.

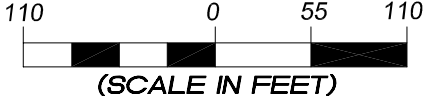


DISTANCE TO NEAREST PUBLIC ROAD IS ± 0.9 MILES.

DISTANCE TO NEAREST BUILDING IS ± 1 MILE.

DISTANCE TO NEAREST ABOVE GROUND UTILITY IS ± 0.35 MILES.

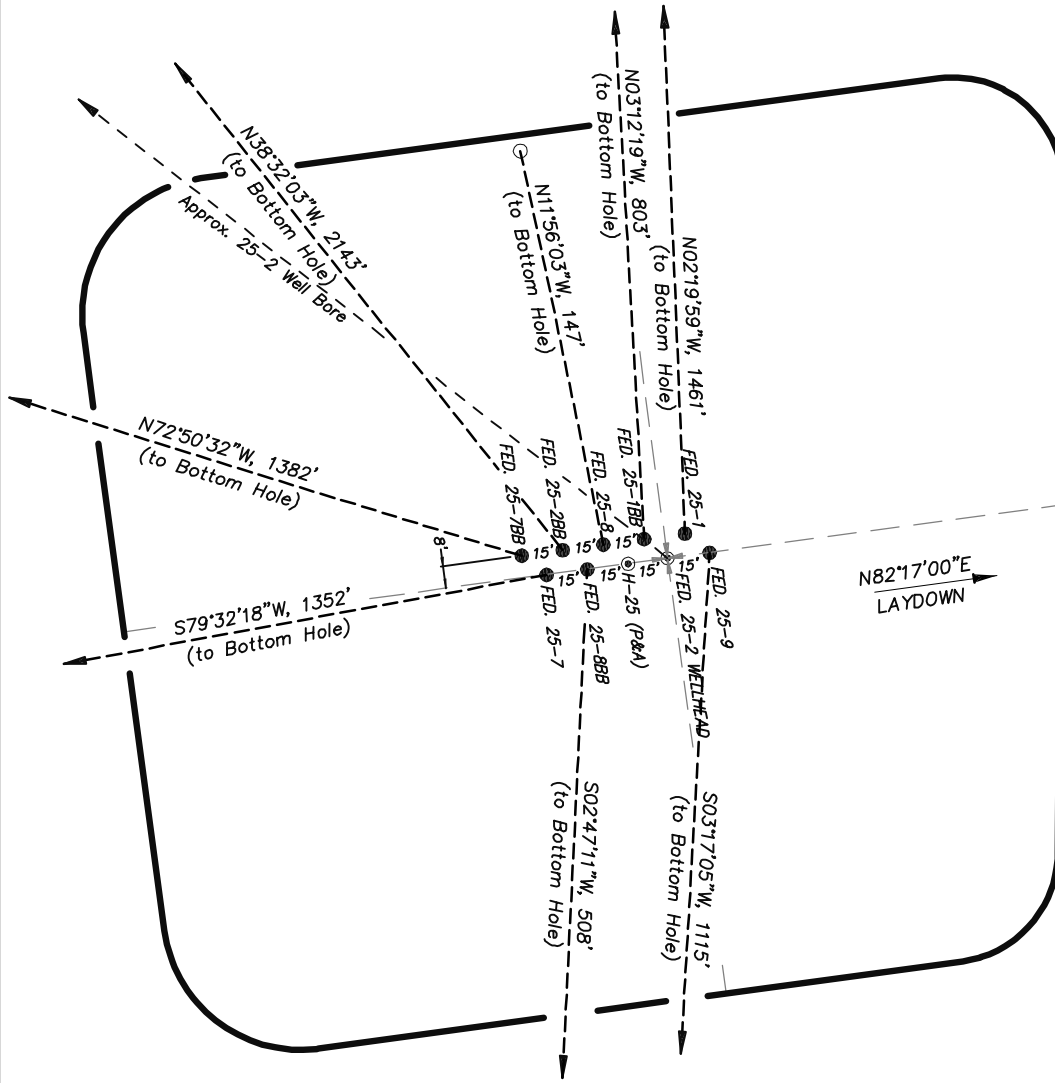
DISTANCE TO NEAREST RAILROAD IS ± 2 MILES.



906 Main Street
 Evanston, Wyoming 82930
 Phone No. (307) 789-4545

<i>Addendum</i>		Scale: 1" = 110'	SHEET 1i OF 10
Project No.	09-04-04	Date Surveyed: 1/14/09	
Date Drawn:	8/26/09	Latest Revision Date:	

EnCana Oil & Gas (USA) Inc.
Well Pad PH-25
 Section 25, T7S, R96W, 6th P.M.
WELL PAD INTERFERENCE PLAT

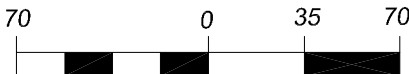


- TOP HOLE FOOTAGES**
- FEDERAL 25-9 (PH-25)
1958' FNL & 591' FEL
 - FEDERAL 25-8BB (PH-25)
1963' FNL & 636' FEL
 - FEDERAL 25-7 (PH-25)
1965' FNL & 650' FEL
 - FEDERAL 25-1 (PH-25)
1951' FNL & 600' FEL
 - FEDERAL 25-1BB (PH-25)
1952' FNL & 615' FEL
 - FEDERAL 25-8 (PH-25)
1954' FNL & 630' FEL
 - FEDERAL 25-2BB (PH-25)
1956' FNL & 644' FEL
 - FEDERAL 25-7BB (PH-25)
1957' FNL & 659' FEL

- BOTTOM HOLE FOOTAGES**
- FEDERAL 25-9 (PH-25)
2150' FSL & 660' FEL
 - FEDERAL 25-8BB (PH-25)
2470' FNL & 660' FEL
 - FEDERAL 25-7 (PH-25)
2180' FNL & 1980' FEL
 - FEDERAL 25-1 (PH-25)
490' FNL & 660' FEL
 - FEDERAL 25-1BB (PH-25)
1150' FNL & 660' FEL
 - FEDERAL 25-8 (PH-25)
1810' FNL & 660' FEL
 - FEDERAL 25-2BB (PH-25)
250' FNL & 1980' FEL
 - FEDERAL 25-7BB (PH-25)
1520' FNL & 1980' FEL

RELATIVE COORDINATES From top hole to bottom hole		
WELL	NORTH	EAST
25-9	-1113	-64
25-8BB	-507	-25
25-7	-245	-1330
25-1	1460	-59
25-1BB	802	-45
25-8	144	-30
25-2BB	1676	-1335
25-7BB	408	-1320

LATITUDE & LONGITUDE Surface position of Wellheads (NAD 83)		
WELL	LATITUDE	LONGITUDE
25-9	39.41044°	108.05078°
25-8BB	39.41042°	108.05093°
25-7	39.41041°	108.05099°
25-1	39.41046°	108.05081°
25-1BB	39.41045°	108.05086°
25-8	39.41044°	108.05091°
25-2BB	39.41044°	108.05097°
25-7BB	39.41043°	108.05102°



(SCALE IN FEET)
 906 Main Street
 Evanston, Wyoming 82930
 Phone No. (307) 789-4545

Interference Plat		Scale: 1" = 70'	SHEET 2 OF 10	
Project No.	09-04-04	Date Surveyed:		1/14/09
Date Drawn:	8/26/09	Latest Revision Date:		

