



INTEQ

ENCANA OIL & GAS (USA) INC

Location: COLORADO Slot: Slot #08 Federal 25-7BB (PH25) 1957'FNL & 659'FEL
 Field: GARFIELD COUNTY (NEW) Well: Federal 25-7BB
 Facility: SEC.25-T7S-R96W Wellbore: Federal 25-7BB PWB

Plot reference wellpath is Federal 25-7BB PWB Rev=0
 True vertical depths are referenced to Rig on Slot #08 Federal 25-7BB (PH25) 1957'FNL & 659'FEL (RT) Grid System: NAD83 / Lambert Colorado State Planes, Central Zone (502), US feet
 Measured depths are referenced to Rig on Slot #08 Federal 25-7BB (PH25) 1957'FNL & 659'FEL (RT) North Reference: True north
 Rig on Slot #08 Federal 25-7BB (PH25) 1957'FNL & 659'FEL (RT) to Mean Sea Level: 6086 feet Scale: True distance
 Mean Sea Level to Mud line (Facility: SEC.25-T7S-R96W): 0 feet Depths are in feet
 Coordinates are in feet referenced to Slot Created by: thomsuzc on 10/16/2009

Location Information

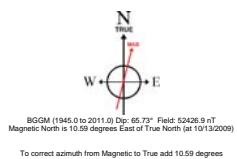
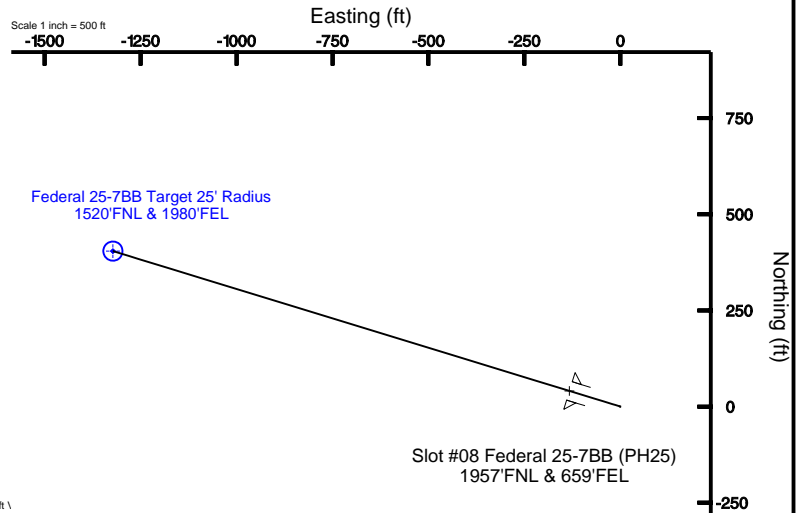
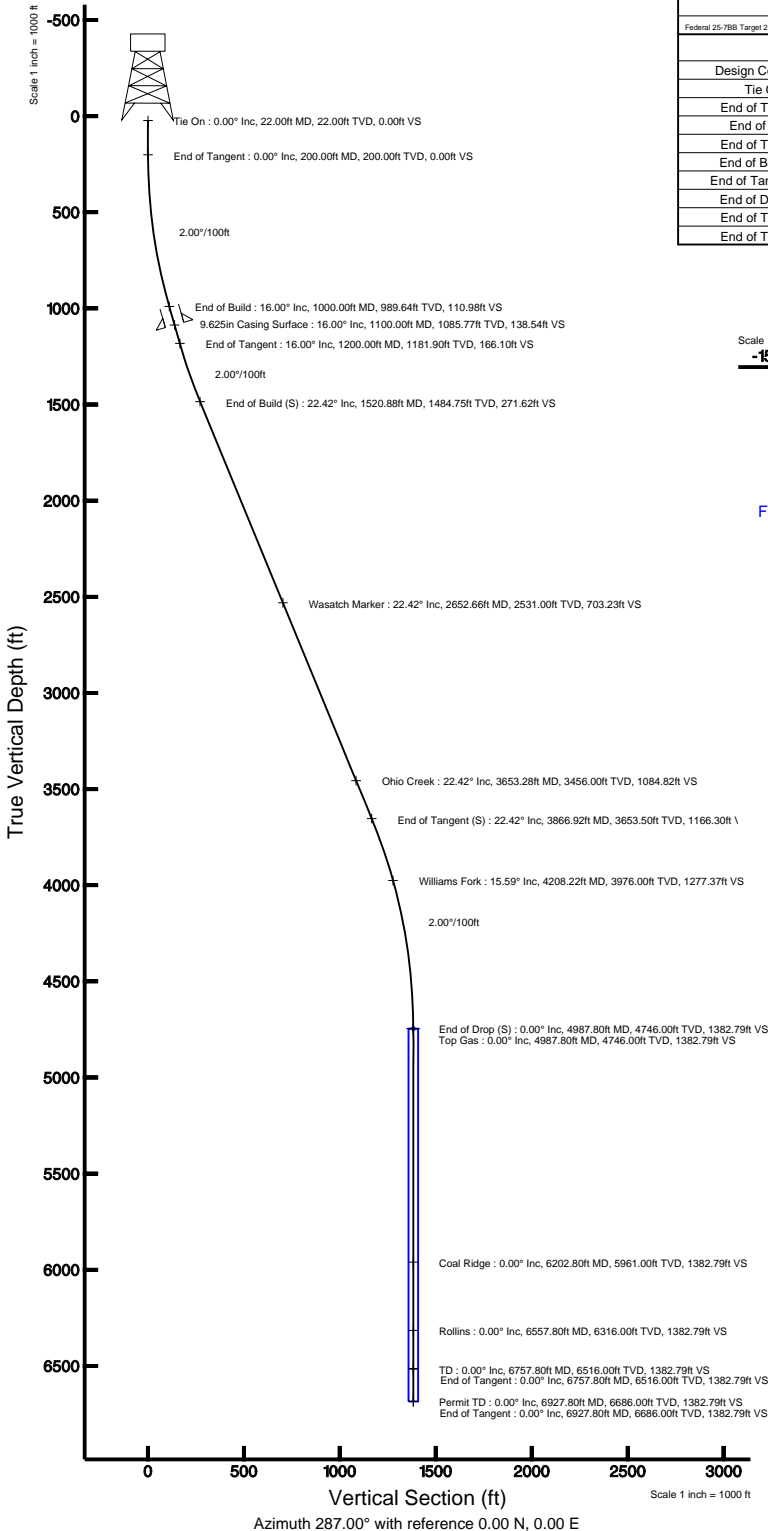
Facility Name			Grid East (USF)	Grid North (USF)	Latitude	Longitude
SEC.25-T7S-R96W			227938.355	1584500.194	39°24'37.584"N	108°03'02.858"W
Slot	Local N (ft)	Local E (ft)	Grid East (USF)	Grid North (USF)	Latitude	Longitude
Slot #08 Federal 25-7BB (PH25) 1957'FNL & 659'FEL	-3.64	-67.81	2279320.469	1584498.457	39°24'37.548"N	108°03'03.672"W
Rig on Slot #08 Federal 25-7BB (PH25) 1957'FNL & 659'FEL (RT) to Mud line (Facility: SEC.25-T7S-R96W)					6086ft	
Mean Sea Level to Mud line (Facility: SEC.25-T7S-R96W)					0ft	
Rig on Slot #08 Federal 25-7BB (PH25) 1957'FNL & 659'FEL (RT) to Mean Sea Level					6086ft	

Targets

Name	MD (ft)	TVD (ft)	Local N (ft)	Local E (ft)	Grid East (USF)	Grid North (USF)	Latitude	Longitude
Federal 25-7BB Target 25' Radius 1520'FNL & 1980'FEL	4987.80	4746.00	404.35	-1322.35	227810.06	1584939.75	39°24'41.544"N	108°03'20.520"W

Well Profile Data

Design Comment	MD (ft)	Inc (°)	Az (°)	TVD (ft)	Local N (ft)	Local E (ft)	DLS (°/100ft)	VS (ft)
Tie On	22.00	0.000	287.003	22.00	0.00	0.00	0.00	0.00
End of Tangent	200.00	0.000	287.003	200.00	0.00	0.00	0.00	0.00
End of Build	1000.00	16.000	287.003	989.64	32.45	-106.13	2.00	110.98
End of Tangent	1200.00	16.000	287.003	1181.90	48.57	-158.84	0.00	166.10
End of Build (S)	1520.88	22.418	287.003	1484.75	79.43	-259.75	2.00	271.62
End of Tangent (S)	3866.92	22.418	287.003	3653.50	341.04	-1115.32	0.00	1166.30
End of Drop (S)	4987.80	0.000	287.003	4746.00	404.35	-1322.35	2.00	1382.79
End of Build (S)	6757.80	0.000	287.003	6516.00	404.35	-1322.35	0.00	1382.79
End of Tangent	6927.80	0.000	287.003	6686.00	404.35	-1322.35	0.00	1382.79





Planned Wellpath Report

Federal 25-7BB PWP Rev-A.0

Page 1 of 5



INTEQ

REFERENCE WELLPATH IDENTIFICATION

Operator	ENCANA OIL & GAS (USA) INC	Slot	Slot #08 Federal 25-7BB (PH25) 1957'FNL & 659'FEL
Area	COLORADO	Well	Federal 25-7BB
Field	GARFIELD COUNTY (NEW)	Wellbore	Federal 25-7BB PWB
Facility	SEC.25-T7S-R96W		

REPORT SETUP INFORMATION

Projection System	NAD83 / Lambert Colorado State Planes, Central Zone (502), US feet	Software System	WellArchitect® 2.0
North Reference	True	User	Thomsuzc
Scale	0.99995	Report Generated	10/16/2009 at 9:48:04 PM
Convergence at slot	1.61° West	Database/Source file	Denver/Federal_25-7BB_PWB.xml

WELLPATH LOCATION

	Local coordinates		Grid coordinates		Geographic coordinates	
	North[ft]	East[ft]	Easting[USft]	Northing[USft]	Latitude	Longitude
Slot Location	-3.64	-67.81	2279320.47	1584498.46	39°24'37.548"N	108°03'03.672"W
Facility Reference Pt			2279388.36	1584500.19	39°24'37.584"N	108°03'02.808"W
Field Reference Pt			3000000.01	4560984.48	47°34'21.070"N	105°30'00.000"W

WELLPATH DATUM

Calculation method	Minimum curvature	Rig on Slot #08 Federal 25-7BB (PH25) 1957'FNL & 659'FEL (RT) to Facility Vertical Datum	6086.00ft
Horizontal Reference Pt	Slot	Rig on Slot #08 Federal 25-7BB (PH25) 1957'FNL & 659'FEL (RT) to Mean Sea Level	6086.00ft
Vertical Reference Pt	Rig on Slot #08 Federal 25-7BB (PH25) 1957'FNL & 659'FEL (RT)	Facility Vertical Datum to Mud Line (Facility)	0.00ft
MD Reference Pt	Rig on Slot #08 Federal 25-7BB (PH25) 1957'FNL & 659'FEL (RT)	Section Origin	N 0.00, E 0.00 ft
Field Vertical Reference	Mean Sea Level	Section Azimuth	287.00°



Planned Wellpath Report

Federal 25-7BB PWP Rev-A.0

Page 2 of 5



INTEQ

REFERENCE WELLPATH IDENTIFICATION

Operator	ENCANA OIL & GAS (USA) INC	Slot	Slot #08 Federal 25-7BB (PH25) 1957'FNL & 659'FEL
Area	COLORADO	Well	Federal 25-7BB
Field	GARFIELD COUNTY (NEW)	Wellbore	Federal 25-7BB PWB
Facility	SEC.25-T7S-R96W		

WELLPATH DATA (79 stations) † = interpolated/extrapolated station

MD [ft]	Inclination [°]	Azimuth [°]	TVD [ft]	Vert Sect [ft]	North [ft]	East [ft]	DLS [°/100ft]
0.00†	0.000	287.003	0.00	0.00	0.00	0.00	0.00
22.00	0.000	287.003	22.00	0.00	0.00	0.00	0.00
122.00†	0.000	287.003	122.00	0.00	0.00	0.00	0.00
200.00	0.000	287.003	200.00	0.00	0.00	0.00	0.00
222.00†	0.440	287.003	222.00	0.08	0.02	-0.08	2.00
322.00†	2.440	287.003	321.96	2.60	0.76	-2.48	2.00
422.00†	4.440	287.003	421.78	8.60	2.51	-8.22	2.00
522.00†	6.440	287.003	521.32	18.08	5.29	-17.29	2.00
622.00†	8.440	287.003	620.48	31.03	9.07	-29.67	2.00
722.00†	10.440	287.003	719.12	47.43	13.87	-45.35	2.00
822.00†	12.440	287.003	817.12	67.26	19.67	-64.32	2.00
922.00†	14.440	287.003	914.38	90.50	26.46	-86.54	2.00
1000.00	16.000	287.003	989.64	110.98	32.45	-106.13	2.00
1022.00†	16.000	287.003	1010.79	117.04	34.23	-111.93	0.00
1122.00†	16.000	287.003	1106.92	144.60	42.29	-138.28	0.00
1200.00	16.000	287.003	1181.90	166.10	48.57	-158.84	0.00
1222.00†	16.440	287.003	1203.02	172.25	50.37	-164.72	2.00
1322.00†	18.440	287.003	1298.42	202.22	59.13	-193.38	2.00
1422.00†	20.440	287.003	1392.71	235.50	68.86	-225.21	2.00
1520.88	22.418	287.003	1484.75	271.62	79.43	-259.75	2.00
1522.00†	22.418	287.003	1485.79	272.05	79.55	-260.16	0.00
1622.00†	22.418	287.003	1578.23	310.19	90.70	-296.63	0.00
1722.00†	22.418	287.003	1670.67	348.32	101.86	-333.10	0.00
1822.00†	22.418	287.003	1763.12	386.46	113.01	-369.56	0.00
1922.00†	22.418	287.003	1855.56	424.59	124.16	-406.03	0.00
2022.00†	22.418	287.003	1948.00	462.73	135.31	-442.50	0.00
2122.00†	22.418	287.003	2040.44	500.86	146.46	-478.97	0.00
2222.00†	22.418	287.003	2132.89	539.00	157.61	-515.44	0.00
2322.00†	22.418	287.003	2225.33	577.13	168.76	-551.91	0.00
2422.00†	22.418	287.003	2317.77	615.27	179.92	-588.38	0.00
2522.00†	22.418	287.003	2410.22	653.40	191.07	-624.84	0.00
2622.00†	22.418	287.003	2502.66	691.54	202.22	-661.31	0.00
2722.00†	22.418	287.003	2595.10	729.68	213.37	-697.78	0.00
2822.00†	22.418	287.003	2687.54	767.81	224.52	-734.25	0.00
2922.00†	22.418	287.003	2779.99	805.95	235.67	-770.72	0.00
3022.00†	22.418	287.003	2872.43	844.08	246.82	-807.19	0.00
3122.00†	22.418	287.003	2964.87	882.22	257.98	-843.66	0.00
3222.00†	22.418	287.003	3057.32	920.35	269.13	-880.12	0.00
3322.00†	22.418	287.003	3149.76	958.49	280.28	-916.59	0.00
3422.00†	22.418	287.003	3242.20	996.62	291.43	-953.06	0.00
3522.00†	22.418	287.003	3334.65	1034.76	302.58	-989.53	0.00
3622.00†	22.418	287.003	3427.09	1072.89	313.73	-1026.00	0.00
3722.00†	22.418	287.003	3519.53	1111.03	324.88	-1062.47	0.00
3822.00†	22.418	287.003	3611.97	1149.17	336.04	-1098.94	0.00
3866.92	22.418	287.003	3653.50	1166.30	341.04	-1115.32	0.00



Planned Wellpath Report

Federal 25-7BB PWP Rev-A.0

Page 3 of 5



INTEQ

REFERENCE WELLPATH IDENTIFICATION

Operator	ENCANA OIL & GAS (USA) INC	Slot	Slot #08 Federal 25-7BB (PH25) 1957'FNL & 659'FEL
Area	COLORADO	Well	Federal 25-7BB
Field	GARFIELD COUNTY (NEW)	Wellbore	Federal 25-7BB PWB
Facility	SEC.25-T7S-R96W		

WELLPATH DATA (79 stations) † = interpolated/extrapolated station

MD [ft]	Inclination [°]	Azimuth [°]	TVD [ft]	Vert Sect [ft]	North [ft]	East [ft]	DLS [°/100ft]
3922.00†	21.316	287.003	3704.62	1186.81	347.04	-1134.94	2.00
4022.00†	19.316	287.003	3798.39	1221.53	357.20	-1168.14	2.00
4122.00†	17.316	287.003	3893.32	1252.95	366.38	-1198.19	2.00
4222.00†	15.316	287.003	3989.29	1281.04	374.60	-1225.05	2.00
4322.00†	13.316	287.003	4086.18	1305.77	381.83	-1248.70	2.00
4422.00†	11.316	287.003	4183.87	1327.10	388.07	-1269.09	2.00
4522.00†	9.316	287.003	4282.25	1345.01	393.30	-1286.22	2.00
4622.00†	7.316	287.003	4381.19	1359.47	397.53	-1300.05	2.00
4722.00†	5.316	287.003	4480.58	1370.47	400.75	-1310.57	2.00
4822.00†	3.316	287.003	4580.29	1378.00	402.95	-1317.76	2.00
4922.00†	1.316	287.003	4680.20	1382.04	404.13	-1321.63	2.00
4987.80	0.000	287.003	4746.00 [†]	1382.79	404.35	-1322.35	2.00
5022.00†	0.000	287.003	4780.20	1382.79	404.35	-1322.35	0.00
5122.00†	0.000	287.003	4880.20	1382.79	404.35	-1322.35	0.00
5222.00†	0.000	287.003	4980.20	1382.79	404.35	-1322.35	0.00
5322.00†	0.000	287.003	5080.20	1382.79	404.35	-1322.35	0.00
5422.00†	0.000	287.003	5180.20	1382.79	404.35	-1322.35	0.00
5522.00†	0.000	287.003	5280.20	1382.79	404.35	-1322.35	0.00
5622.00†	0.000	287.003	5380.20	1382.79	404.35	-1322.35	0.00
5722.00†	0.000	287.003	5480.20	1382.79	404.35	-1322.35	0.00
5822.00†	0.000	287.003	5580.20	1382.79	404.35	-1322.35	0.00
5922.00†	0.000	287.003	5680.20	1382.79	404.35	-1322.35	0.00
6022.00†	0.000	287.003	5780.20	1382.79	404.35	-1322.35	0.00
6122.00†	0.000	287.003	5880.20	1382.79	404.35	-1322.35	0.00
6222.00†	0.000	287.003	5980.20	1382.79	404.35	-1322.35	0.00
6322.00†	0.000	287.003	6080.20	1382.79	404.35	-1322.35	0.00
6422.00†	0.000	287.003	6180.20	1382.79	404.35	-1322.35	0.00
6522.00†	0.000	287.003	6280.20	1382.79	404.35	-1322.35	0.00
6622.00†	0.000	287.003	6380.20	1382.79	404.35	-1322.35	0.00
6722.00†	0.000	287.003	6480.20	1382.79	404.35	-1322.35	0.00
6757.80	0.000	287.003	6516.00	1382.79	404.35	-1322.35	0.00
6822.00†	0.000	287.003	6580.20	1382.79	404.35	-1322.35	0.00
6922.00†	0.000	287.003	6680.20	1382.79	404.35	-1322.35	0.00
6927.80	0.000	287.003	6686.00	1382.79	404.35	-1322.35	0.00



Planned Wellpath Report

Federal 25-7BB PWP Rev-A.0

Page 4 of 5



INTEQ

REFERENCE WELLPATH IDENTIFICATION

Operator	ENCANA OIL & GAS (USA) INC	Slot	Slot #08 Federal 25-7BB (PH25) 1957'FNL & 659'FEL
Area	COLORADO	Well	Federal 25-7BB
Field	GARFIELD COUNTY (NEW)	Wellbore	Federal 25-7BB PWB
Facility	SEC.25-T7S-R96W		

HOLE & CASING SECTIONS Ref Wellbore: Federal 25-7BB PWB Ref Wellpath: Federal 25-7BB PWP Rev-A.0

String/Diameter	Start MD [ft]	End MD [ft]	Interval [ft]	Start TVD [ft]	End TVD [ft]	Start N/S [ft]	Start E/W [ft]	End N/S [ft]	End E/W [ft]
12.25in Open Hole	22.00	1100.00	1078.00	22.00	1085.77	0.00	0.00	40.51	-132.49
9.625in Casing Surface	22.00	1100.00	1078.00	22.00	1085.77	0.00	0.00	40.51	-132.49

TARGETS

Name	MD [ft]	TVD [ft]	North [ft]	East [ft]	Grid East [srv ft]	Grid North [srv ft]	Latitude	Longitude	Shape
1) Federal 25-7BB Target 25' Radius 1520'FNL & 1980'FEL	4987.80	4746.00	404.35	-1322.35	2278010.06	1584939.75	39°24'41.544"N	108°03'20.520"W	circle

SURVEY PROGRAM Ref Wellbore: Federal 25-7BB PWB Ref Wellpath: Federal 25-7BB PWP Rev-A.0

Start MD [ft]	End MD [ft]	Positional Uncertainty Model	Log Name/Comment	Wellbore
22.00	6927.80	MTC (Collar, post-2000) (Standard)		Federal 25-7BB PWB



Planned Wellpath Report

Federal 25-7BB PWP Rev-A.0

Page 5 of 5



INTEQ

REFERENCE WELLPATH IDENTIFICATION

Operator	ENCANA OIL & GAS (USA) INC	Slot	Slot #08 Federal 25-7BB (PH25) 1957'FNL & 659'FEL
Area	COLORADO	Well	Federal 25-7BB
Field	GARFIELD COUNTY (NEW)	Wellbore	Federal 25-7BB PWB
Facility	SEC.25-T7S-R96W		

WELLPATH COMMENTS

MD [ft]	Inclination [°]	Azimuth [°]	TVD [ft]	Comment
2652.66	22.418	287.003	2531.00	Wasatch Marker
3653.28	22.418	287.003	3456.00	Ohio Creek
4208.22	15.592	287.003	3976.00	Williams Fork
4987.80	0.000	287.003	4746.00	Top Gas
6202.80	0.000	287.003	5961.00	Coal Ridge
6557.80	0.000	287.003	6316.00	Rollins
6757.80	0.000	287.003	6516.00	TD
6927.80	0.000	287.003	6686.00	Permit TD