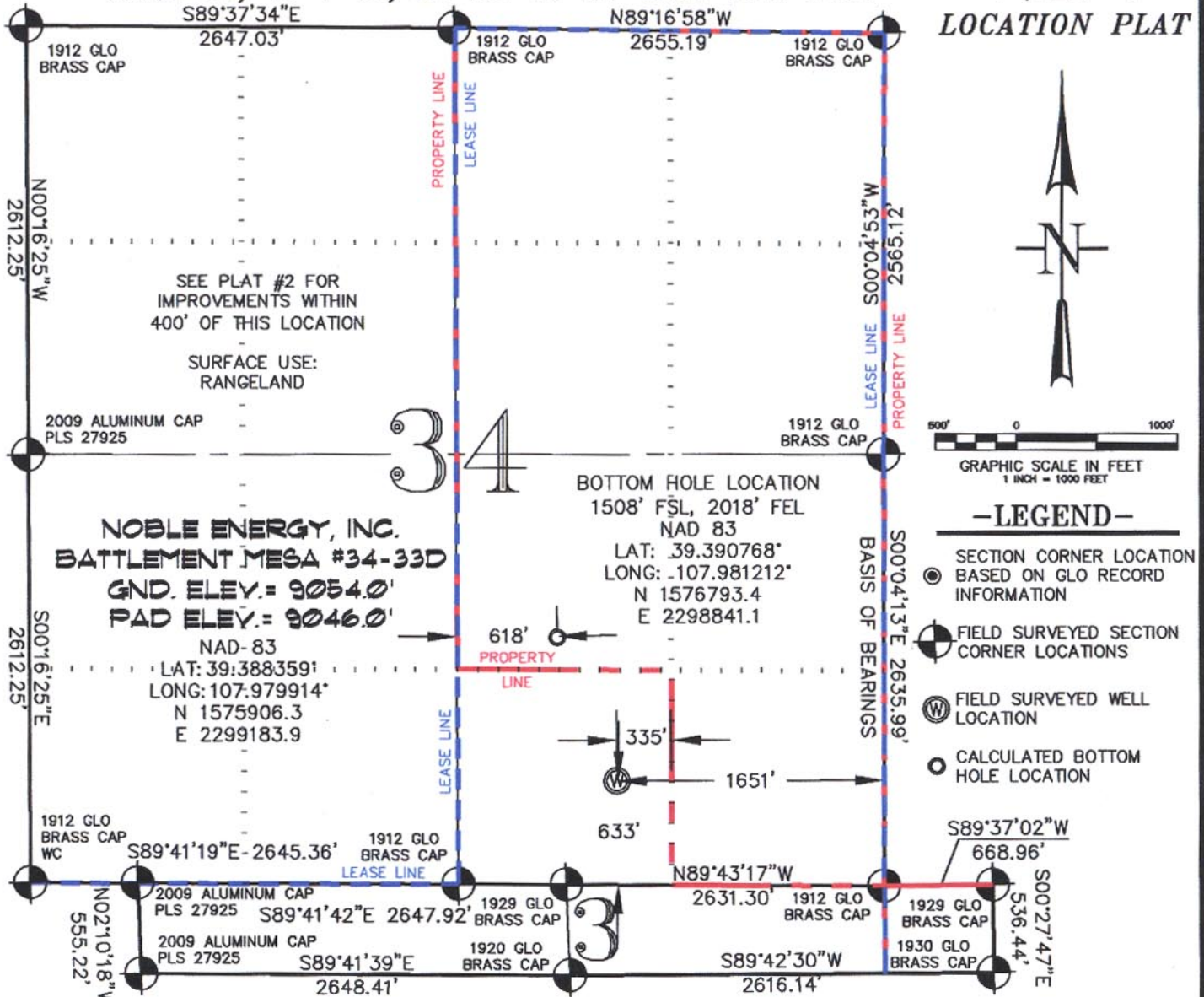


SEC. 34, T. 7 S., R. 95 W. OF THE 6TH P.M.

PLAT #1
LOCATION PLAT



NOBLE ENERGY, INC.
BATTLEMENT MESA #34-33D
GND. ELEV.: 9054.0'
PAD ELEV.: 9046.0'

BOTTOM HOLE LOCATION
1508' FSL, 2018' FEL
NAD 83
LAT: 39.390768°
LONG: -107.981212°
N 1576793.4
E 2298841.1

NAD-83
LAT: 39.388359°
LONG: 107.979914°
N 1575906.3
E 2299183.9

THIS WELL LOCATION PLAT WAS PREPARED FOR NOBLE ENERGY INC. TO LOCATE THE BATTLEMENT MESA #34-33D WELL, 633 FEET FROM THE SOUTH LINE AND 1651 FEET FROM THE EAST LINE IN THE SW1/4 SE1/4 OF SECTION 34, T. 7 S., R. 95 W. OF THE 6TH P.M. GARFIELD COUNTY, COLORADO.

REFERENCE NOTES

- 1) T. 7 S., R. 95 W., 6TH P.M. GLO PLAT.
- 2) U.S.G.S. QUAD: PARACHUTE, CO
- 3) ELEVATIONS BASED ON N.A.V.D. 1988
- 4) LATITUDES AND LONGITUDES ARE BASED ON NAD 83, COLORADO CENTRAL ZONE.
- 5) GPS OPERATOR ROBERT WOOD, OBSERVED A PDOP OF 2.3.
- 6) ALL GPS OBSERVATIONS ARE IN COMPLIANCE WITH COGCC RULE NO. 215.
- 7) SURFACE AND BOTTOM HOLE LOCATIONS ARE MEASURED 90° FROM SECTION LINES.

SURVEYOR'S CERTIFICATE

I, George R. Bauer: a Professional Land Surveyor in the State of Colorado do hereby certify that this Survey was made under my direct supervision, and that this Plat represents said Survey.

(Signature)
27925
12/4/09
COLORADO P.L.S. 27925



CONSTRUCTION SURVEYS, INC.
0012 SUNRISE BLVD.
SALT, CO 81652
(970)876-5753

VIEW: 1E

SURVEYED: 08/28/07	SCALE: 1" = 1000'
DRAFTED: 11/30/09	DWG: Noble\2006\Noble340
CHECKED: 12/03/09	SHEET: 1 of 10