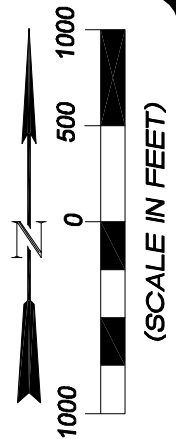
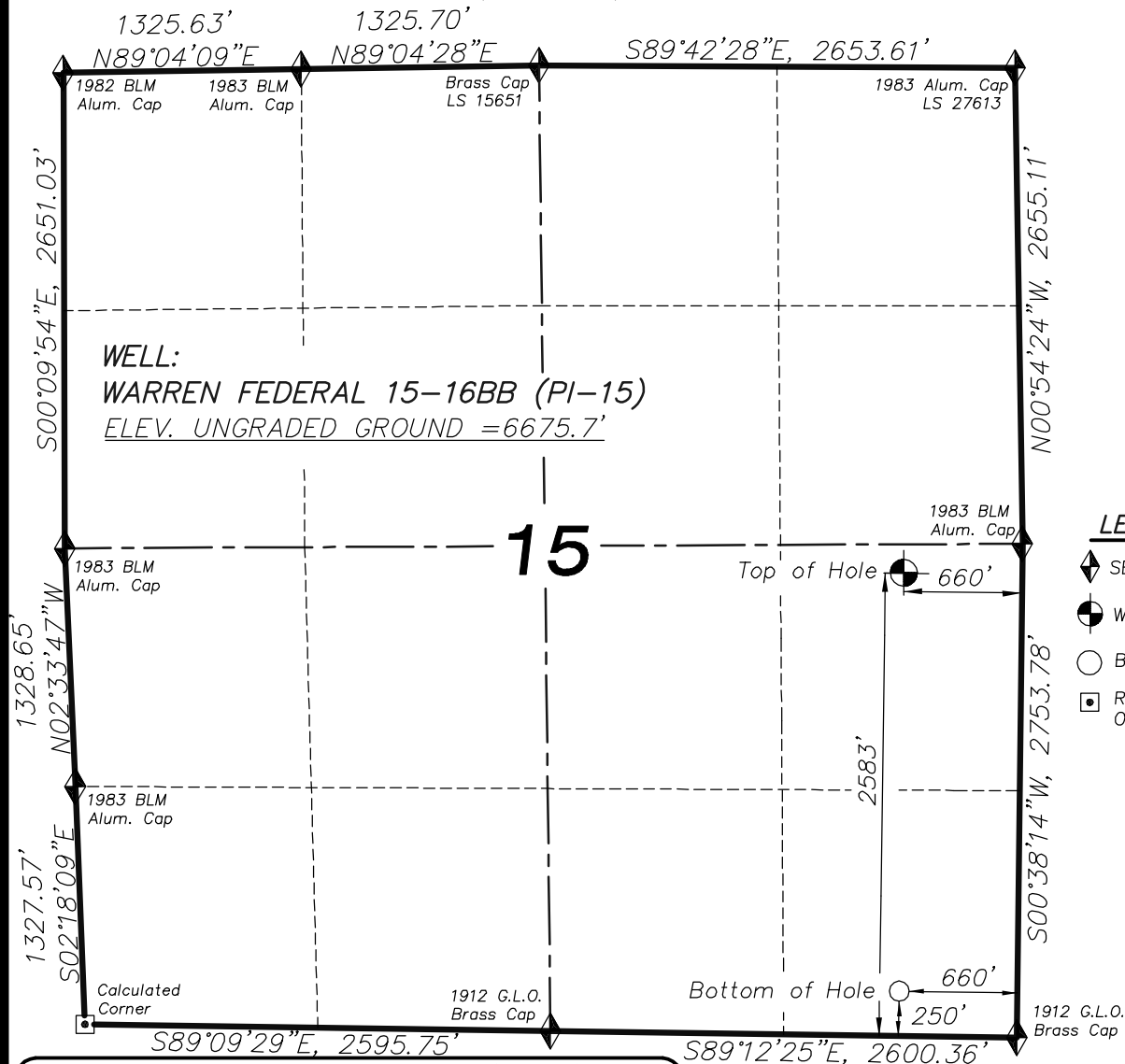


# T7S, R95W, 6th P.M.



## WELL:

WARREN FEDERAL 15-16BB (PI-15)

ELEV. UNGRADED GROUND = 6675.7'

## LEGEND

- ◆ SECTION CORNER LOCATED
- ⊙ WELL PAD LOCATION
- BOTTOM HOLE LOCATION
- RECORD LOCATION OF CORNER

## WARREN FEDERAL 15-16BB WELL (PI-15)

(WELLHEAD LOCATION) NAD 83

LATITUDE = 39.43727° N

LONGITUDE = 107.97666° W

(BOTTOM HOLE LOCATION) NAD 83

LATITUDE = 39.43086° N

LONGITUDE = 107.97673° W

## CERTIFICATE OF SURVEYOR

I, TED TAGGART OF FRUITA, COLORADO HEREBY CERTIFY THAT THIS MAP WAS MADE FROM NOTES TAKEN DURING AN ACTUAL SURVEY MADE BY ME OR UNDER MY DIRECTION FOR ENCANA OIL & GAS (USA) INC. AND THAT THIS LOCATION HAS BEEN STAKED ON THE GROUND AS SHOWN HEREON.



906 Main Street  
Evanston, Wyoming 82930  
Phone No. (307) 789-4545



## NOTES

1. WELL FOOTAGES ARE MEASURED AT RIGHT ANGLES TO SECTION LINES.
2. BASIS OF BEARING: GEODETIC- BASED ON GPS OBSERVATIONS.
3. ELEVATIONS BASED ON GPS OBSERVATIONS, NAVD 88 (GEOID 03), POST PROCESSED USING NGS OPUS.
4. THE BOTTOM HOLE BEARS S00°38'52"W, 2333' FROM TOP OF HOLE.
5. SEE ADDENDUM TO LEGAL PLAT (1f) FOR VISIBLE IMPROVEMENTS WITHIN 400 FEET OF THE PROPOSED OIL AND GAS LOCATION.
6. CONTROL FOR SURVEY WAS ESTABLISHED USING DIFFERENTIALLY CORRECTED GPS FROM AN OPUS BASED CONTROL NETWORK. WELL LOCATION WAS ESTABLISHED USING NON-GPS CONVENTIONAL METHODS, THEREFORE NO PDOP READING WAS TAKEN.

## MAP to ACCOMPANY

APPLICATION for PERMIT to DRILL

EnCana Oil & Gas (USA) Inc.

Warren Federal 15-16BB (PI-15) Well

NE1/4 SE1/4, SECTION 15

T7S, R95W, 6th P.M.

GARFIELD COUNTY, COLORADO

Location Plat		Scale: 1" = 1000'	SHEET 1b OF 10
Project No.	07-04-106	Date Surveyed: 9/27/07	
Date Drawn: 12/06/07		Latest Revision Date: 11/11/09	