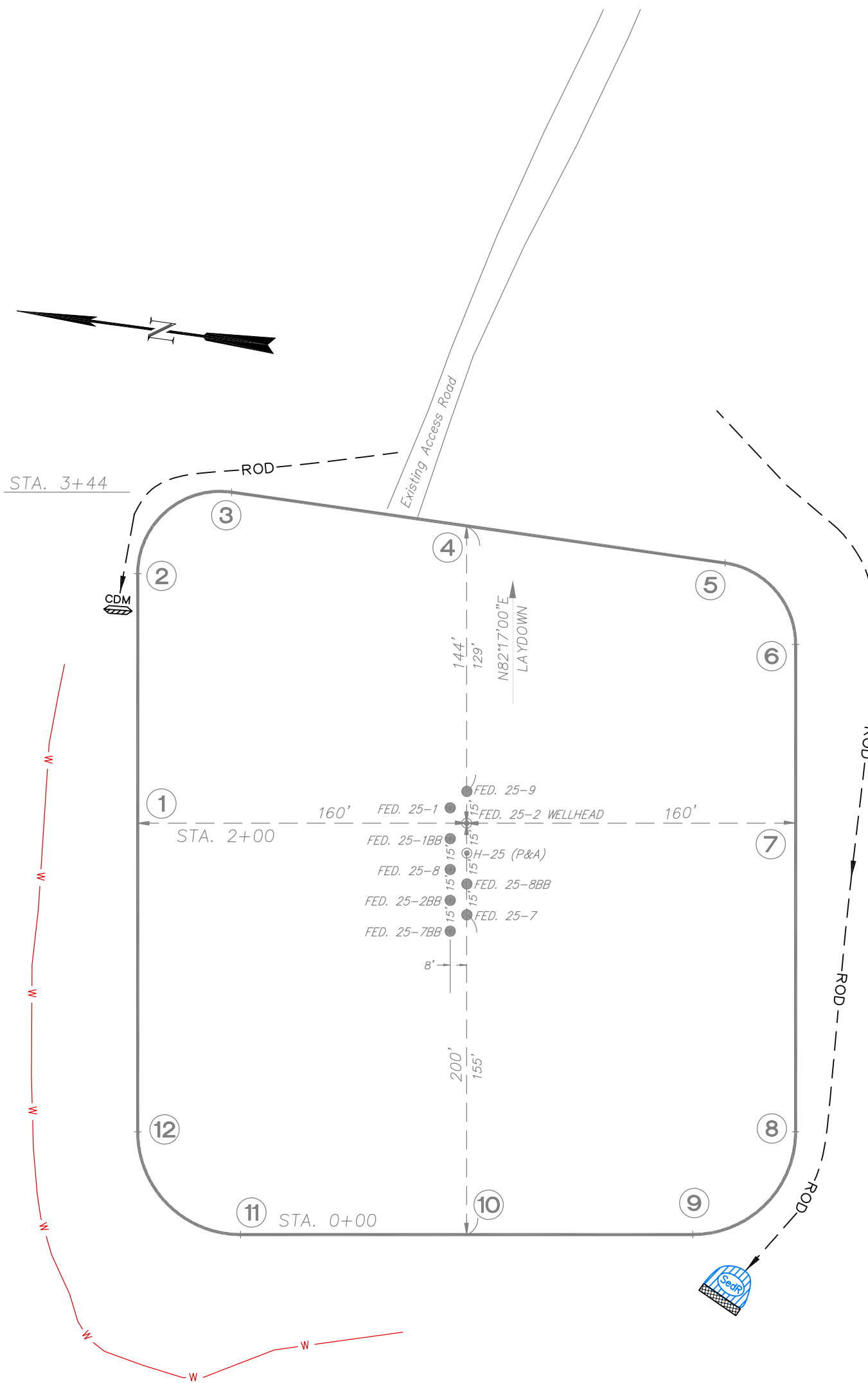


EnCana Oil & Gas (USA) Inc.

PH-25 Well Pad

SE1/4 NE1/4, SECTION 25, T 7 S, R 96 W, 6th P.M.

PRE-CONSTRUCTION PLAT



Total Surface Disturbance = 3.78 Acres
(See Sheet 4 for Details)

- NOTES;
- (1) Slope Track and/or Terrace all Slopes and Piles
 - (2) Erosion Control & Seed Topsoil
 - (3) Erosion Control & Seed Outside
 - (4) Slope away from Substructure Areas 1% to 3% to Flow Control

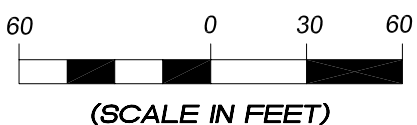
- LEGEND
- S- = SLASH
 - ST = SEDIMENT TRAP
 - SedR = SEDIMENT RESERVOIR
 - R.O.D. = RUN-ON DIVERSION
 - W- = PERIMETER CONTROL (WATTLES)
 - CSD = CUT SLOPE DIVERSION (BERM TOE OF CUT SLOPE)
 - D = FILL DIVERSION TO SEDIMENT TRAP
 - VGB = VEGETATION BUFFER (UNDISTURBED LAND INSIDE PC)
 - FCD = FLOW CONTROL DITCH
 - PARI = PAD/ACCESS ROAD INTERFACE
 - [Pattern] = LEVEL SPREADER
 - - - = TOE BERM (PLACED AT TOE OF ALL FILL SLOPES/STOCKPILES)
 - - - = TOPSOIL BERM
 - [Pattern] = SEED, ECB & FLEX
 - [Pattern] = SEED

PRE-CONSTRUCTION PHASE COMPLETE,
AUTHORIZATION TO CONTINUE
CONSTRUCTION.

SIGNATURE: _____



906 Main Street
Evanston, Wyoming 82930
Phone No. (307) 789-4545

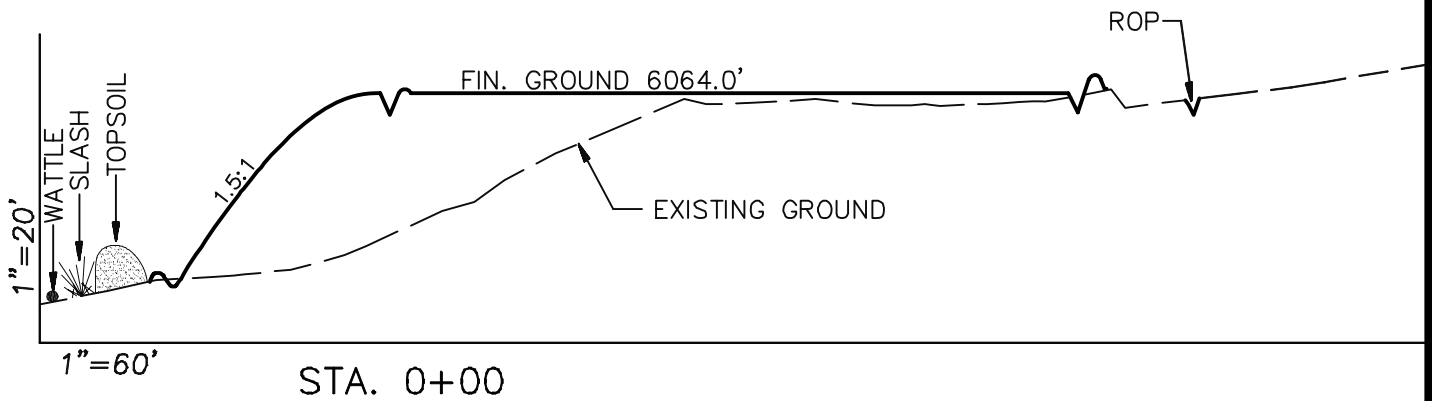
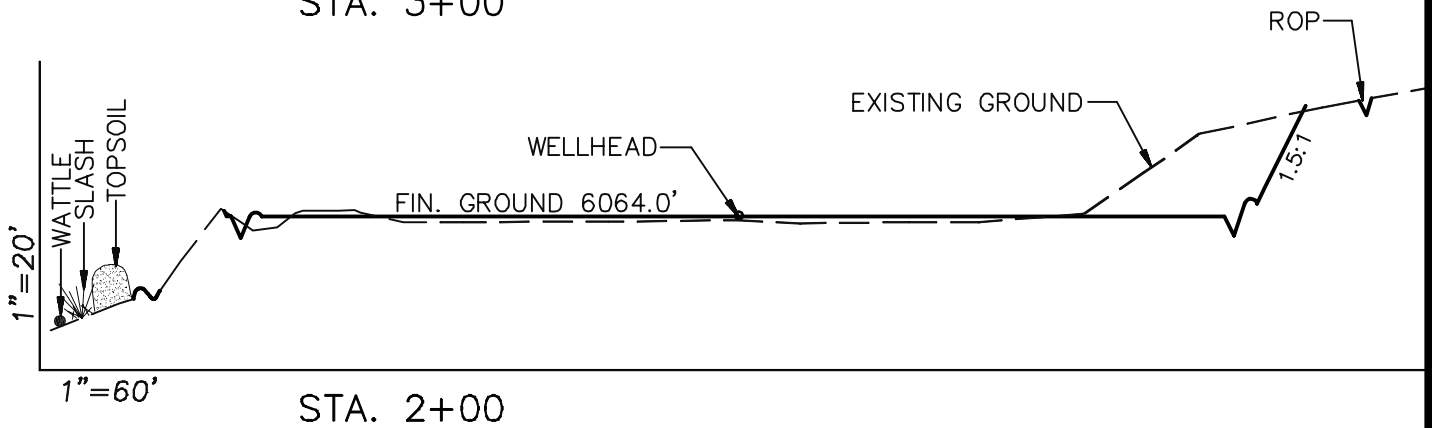
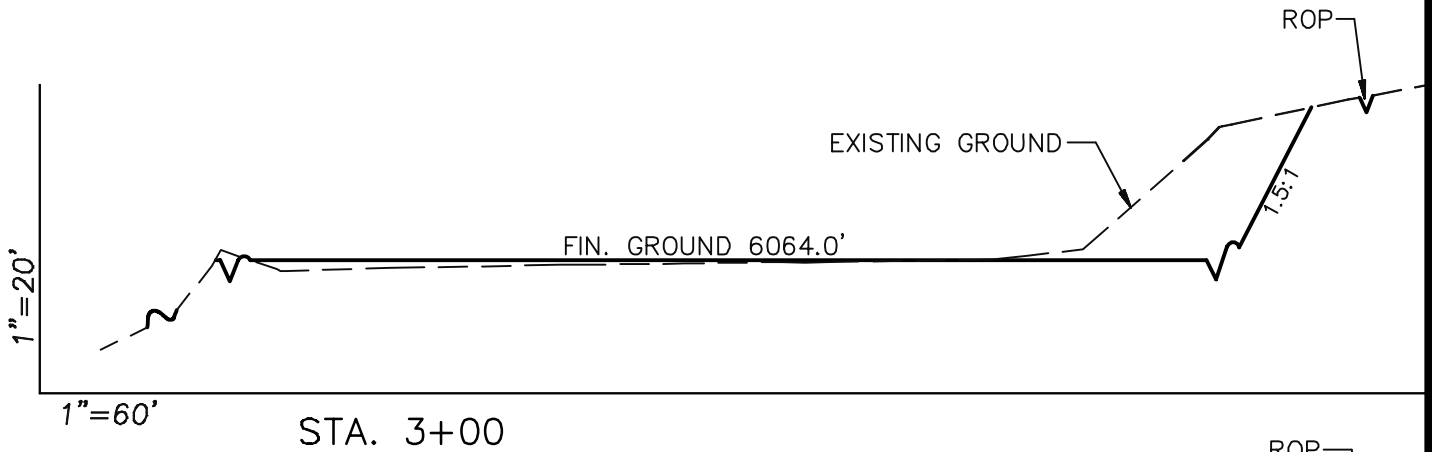


Pre-Construction		Scale: 1" = 60'	SHEET 3a OF 10
Project No.	09-04-04	Date Surveyed: 1/14/09	
Date Drawn:	8/14/09	Latest Revision Date:	

EnCana Oil & Gas (USA) Inc.

Well Pad PH-25

CROSS SECTIONS



SURFACE DISTURBANCE (IN ACRES)

Well Pad	2.5
Side Slopes	0.25
Topsoil & Waste Material	1.03
TOTAL	3.78

NOTE:
ALL CUT AND FILL
SLOPES ARE AT 1.5:1
UNLESS OTHERWISE
NOTED.

EARTHWORK QUANTITIES

(in Cubic Yards w/ 0% shrink/swell)

ITEM	CUT	FILL	6" TOPSOIL	EXCESS
PAD	3400	3234	Topsoil not included in Excavation	166
PIT	0	0		0
TOTALS	3400	3234	1162	166

Cross Sections

Scale: As Shown

SHEET

Project No. 09-04-04

Date Surveyed: 1/14/09

4

Date Drawn: 8/26/09

Latest Revision Date:

OF 10

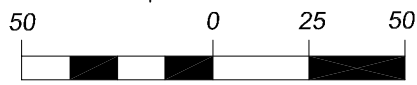
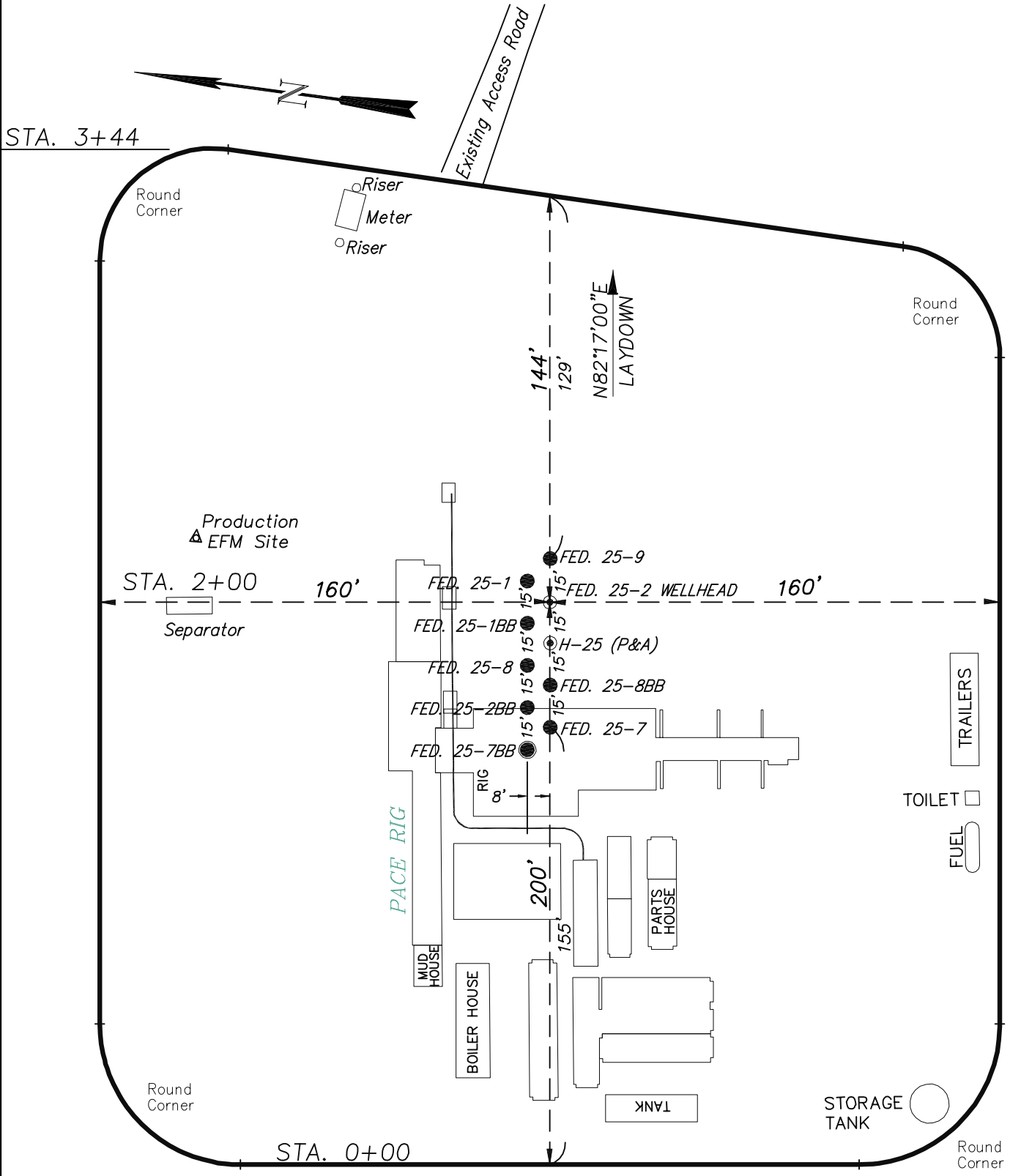


906 Main Street
Evanston, Wyoming 82930
Phone No. (307) 789-4545

EnCana Oil & Gas (USA) Inc.

Well Pad PH-25

TYPICAL RIG LAYOUT



(SCALE IN FEET)

Rig Layout		Scale: 1" = 50'	SHEET 5 OF 10	
Project No.	09-04-04	Date Surveyed:		1/14/09
Date Drawn:	8/14/09	Latest Revision Date:		

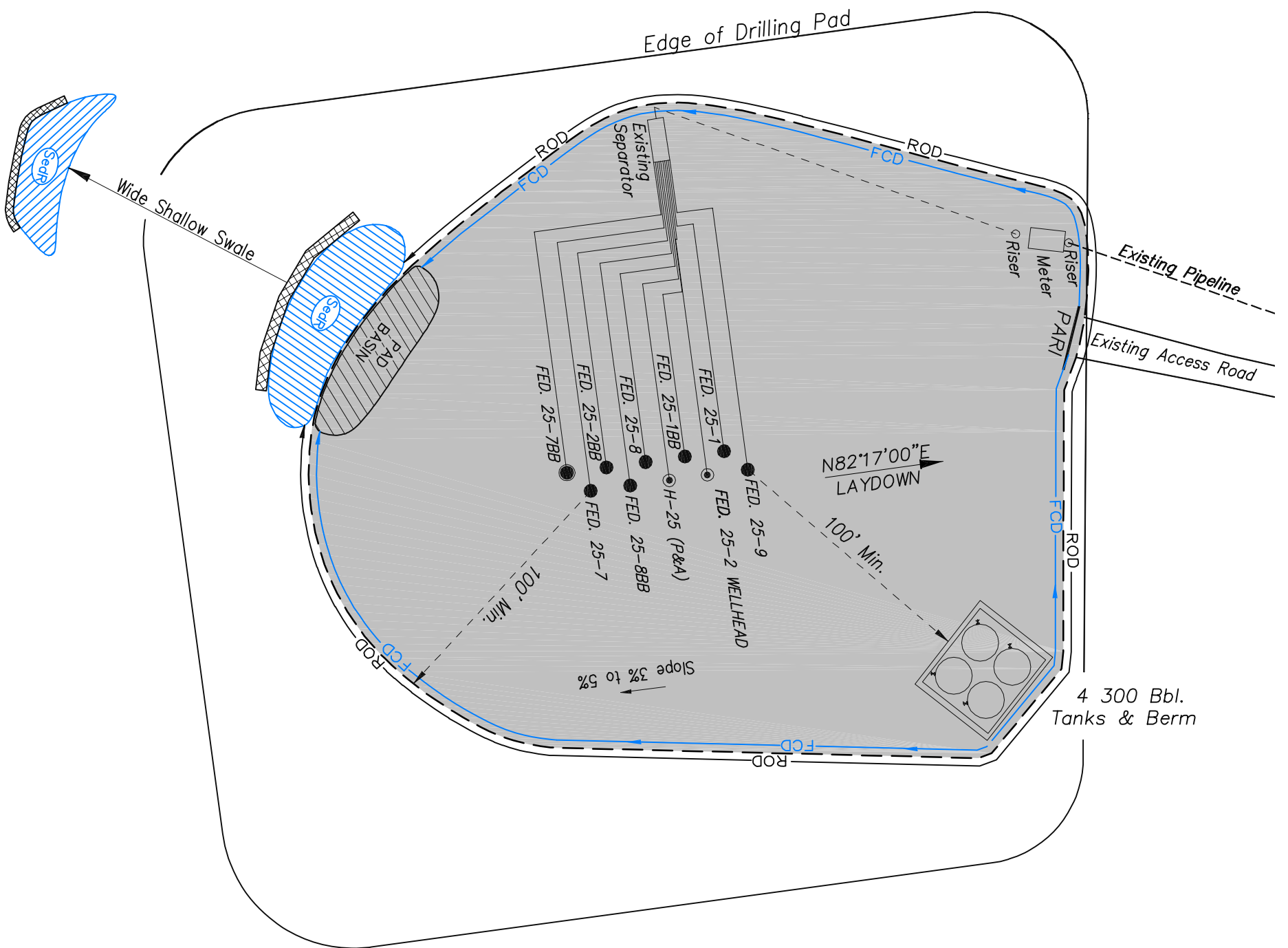


906 Main Street
Evanston, Wyoming 82930
Phone No. (307) 789-4545

EnCana Oil & Gas (USA) Inc.

PH-25 Well Pad

PRODUCTION SCHEMATIC



NOTES:

1. Set Tanks High so pad Entrance & Tank Area Can Drain to Pad Basin
2. Gravel Pad 75' from Wells & Around Tanks and Separators
3. Pad Drains to Pad Basin at a 3% to 5% slope
4. BMP Selection and Position may change Depending on Actual Conditions Encountered During the Construction Process

NOTE:

Actual Equipment Layout and Reclaimed Pad Surface Area May Change due to Production Requirements or Site Conditions.

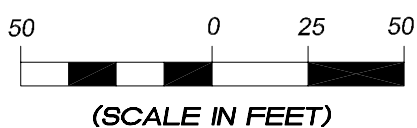
ESTIMATED AREAS
 RECLAIMED AREA: 2.41 ACRES
 UNRECLAIMED AREA: 1.37 ACRES

LEGEND

- S- = SLASH
- ST = SEDIMENT TRAP
- SedR = SEDIMENT RESERVOIR
- R.O.D. = RUN-ON DIVERSION
- W- = PERIMETER CONTROL (WATTLES)
- CSD = CUT SLOPE DIVERSION (BERM TOE OF CUT SLOPE)
- D = FILL DIVERSION TO SEDIMENT TRAP
- VGB = VEGETATION BUFFER (UNDISTURBED LAND INSIDE PC)
- FCD = FLOW CONTROL DITCH
- PARI = PAD/ACCESS ROAD INTERFACE
- [Pattern] = LEVEL SPREADER
- [Pattern] = TOE BERM (PLACED AT TOE OF ALL FILL SLOPES/STOCKPILES)
- [Pattern] = TOPSOIL BERM
- [Pattern] = SEED, ECB & FLEX
- [Pattern] = SEED



906 Main Street
 Evanston, Wyoming 82930
 Phone No. (307) 789-4545



Production Schematic		Scale: 1" = 50'	SHEET
Project No.	09-04-04	Date Surveyed:	1/14/09
Date Drawn:	8/26/09	Latest Revision Date:	
			6
			OF 10

EnCana Oil & Gas (USA) Inc.

Well Pad PH-25

Section 25, T7S, R96W, 6th P.M.

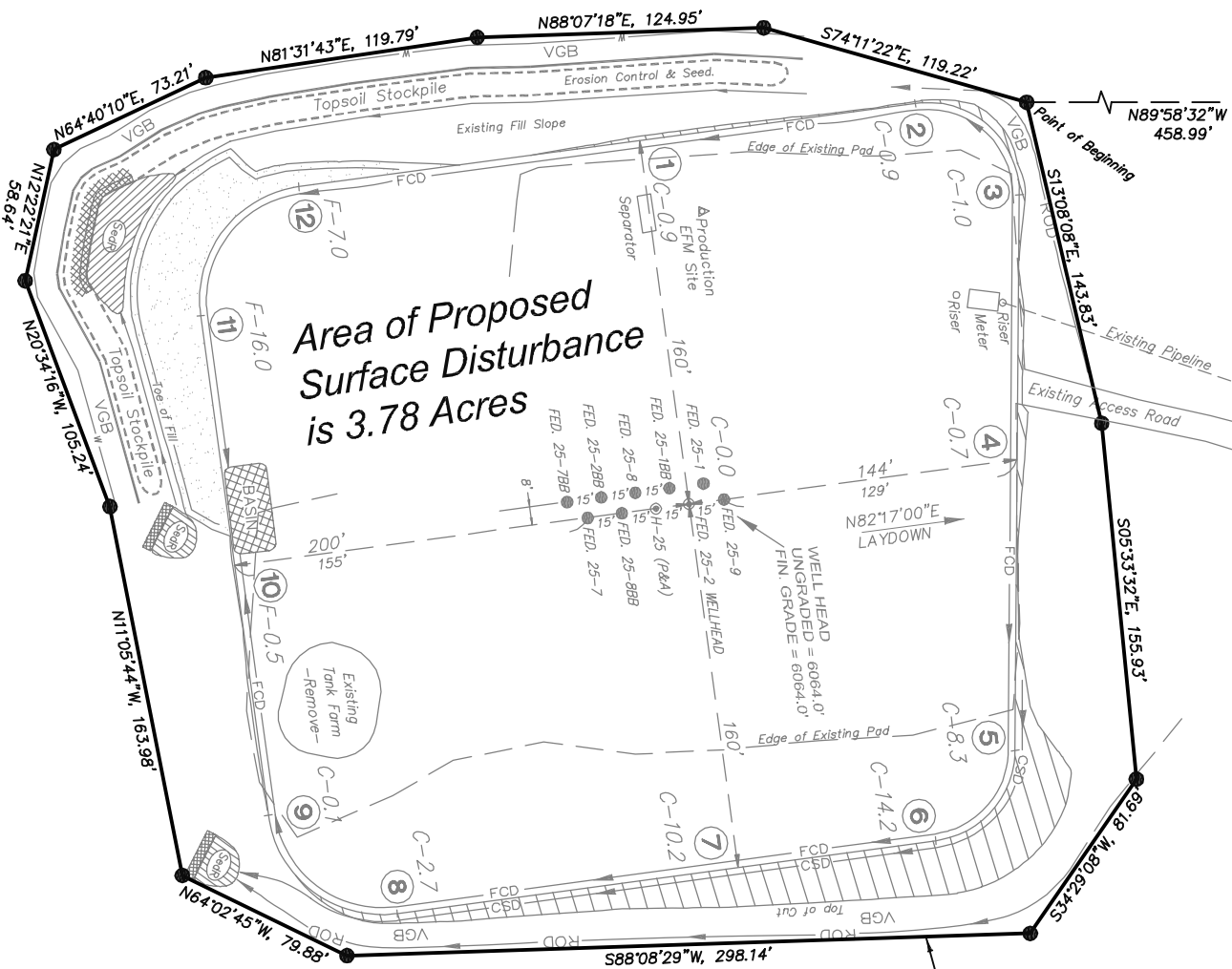
SURFACE DISTURBANCE AREA



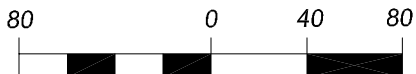
Northeast Cor.
Section 25
BLM Aluminum
Cap

1798.63'
S00°00'57"W, 2583.99'

East 1/4 Cor.
Section 25
BLM Aluminum
Cap



DISTURBED AREA LIMITS



(SCALE IN FEET)



906 Main Street
Evanston, Wyoming 82930
Phone No. (307) 789-4545

Surface Disturbance		Scale: 1" = 80'	SHEET 7 OF 10
Project No.	09-04-04	Date Surveyed: 1/14/09	
Date Drawn:	8/14/09	Latest Revision Date:	