

SHEET  
2d  
OF 11

# ENCANA OIL & GAS (USA) INC

## WELL PAD INTERFERENCE PLAT

### WELL PAD (F210U)

Section 21, T8S, R96W, 6th P.M.

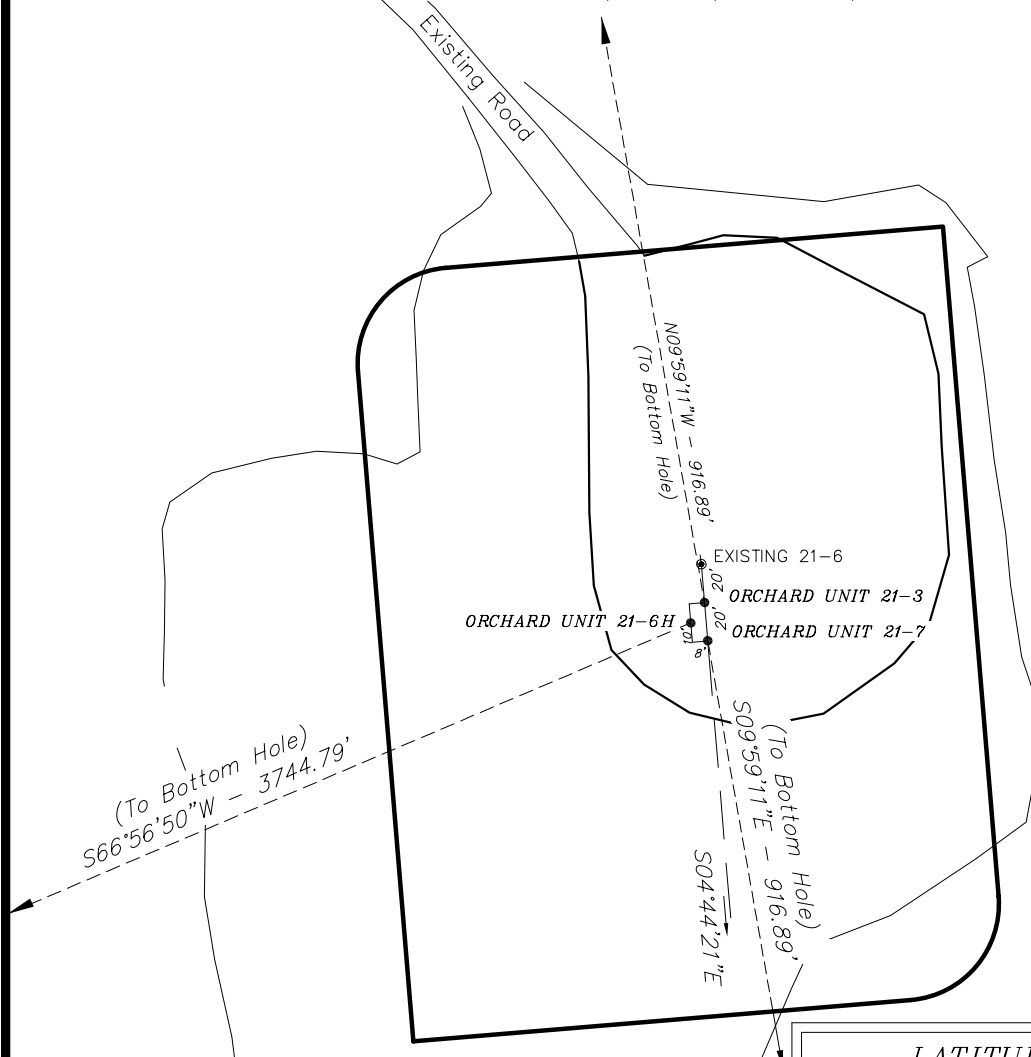


#### TOP HOLE FOOTAGES

ORCHARD UNIT 21-3 (F210U)  
1687' FNL & 1729' FWL

ORCHARD UNIT 21-6H (F210U)  
1697' FNL & 1722' FWL

ORCHARD UNIT 21-7 (F210U)  
1706' FNL & 1730' FWL



#### BOTTOM HOLE FOOTAGES

ORCHARD UNIT 21-3 (F210U)  
781' FNL & 1576' FWL

ORCHARD UNIT 21-6H (F210U)  
2042' FSL & 1736' FEL

ORCHARD UNIT 21-7 (F210U)  
2612' FNL & 1883' FWL

#### LATITUDE & LONGITUDE Top of Hole position (NAD 83)

WELL	LATITUDE	LONGITUDE
21-3	39° 20' 15.35"	108° 07' 01.01"
21-6H	39° 20' 15.25"	108° 07' 01.10"
21-7	39° 20' 15.16"	108° 07' 00.99"
EXIST 21-6	39° 20' 15.55"	108° 07' 01.03"

#### RELATIVE COORDINATES From top hole to bottom hole

WELL	NORTH	EAST
21-3	903'	-159'
21-6H	-1,466'	-3,446'
21-7	-903'	159'

#### Note:

Bearings are based on G.P.S. observations.

#### LATITUDE & LONGITUDE Bottom of Hole position (NAD 83)

WELL	LATITUDE	LONGITUDE
21-3	39° 20' 24.28"	108° 07' 03.03"
21-6H	39° 20' 00.76"	108° 07' 44.94"
21-7	39° 20' 06.23"	108° 06' 58.97"

SURVEYED BY: C.D.S. DATE SURVEYED: 10-20-80  
DRAWN BY: F.T.M. DATE DRAWN: 10-24-08  
SCALE: 1" = 60' REVISED: M.W. 05-28-09

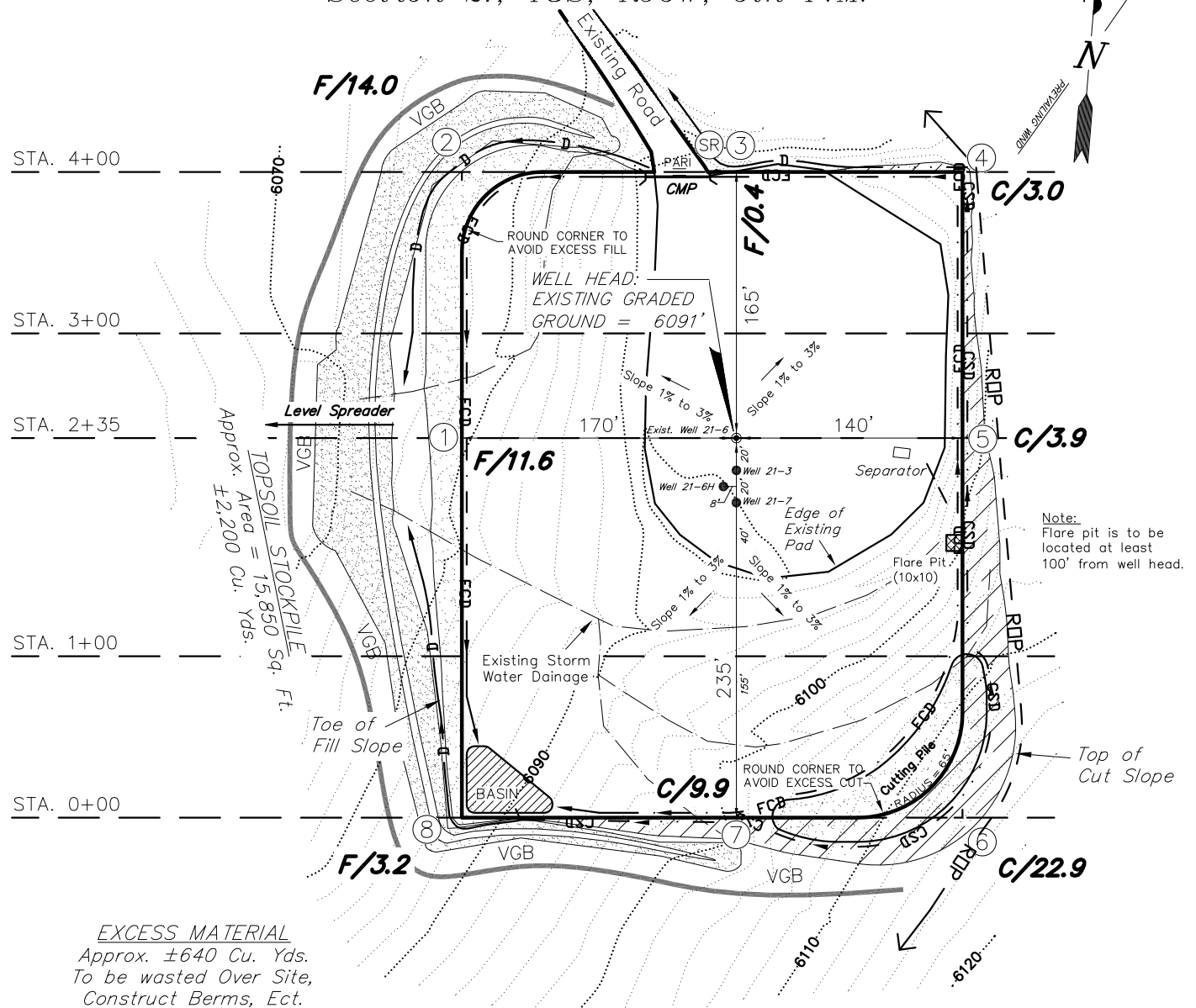
**Tri State**  
Land Surveying, Inc.  
180 NORTH VERNAL AVE. VERNAL, UTAH 84078  
(435) 781-2501

SHEET  
3  
OF 11

# ENCANA OIL & GAS (USA) INC

## WELL PAD (F210U)

Section 21, T8S, R96W, 6th P.M.



### NOTES:

- (1) Slope Track and/or Terrace All Slopes and Piles
- (2) Erosion Control & Seed Topsoil Stockpile
- (3) Erosion Control & Seed Outside Slopes of Stockpiles
- (4) Slope away from Substructure Areas 1% to 3% to Flow Control Ditch on Entire Pad
- (5) When Possible the Cut and Fill Slopes Directly Behind the Proposed Production Equipment Should be Reclaimed with 3:1 Slopes and Topsoil Spread During Pad Construction.
- (6) BMP Selection and Position may Change Depending on Actual Conditions Encountered During the Construction Process.
- (7) All CMP's Shall have Inlet and Outlet Protection.
- (8) All BMP's to be constructed to Encana Oil & Gas (USA) Inc. BMP Manual's Specifications

### LEGEND:

- PARI = PAD/ACCESS ROAD INTERFACE
- SR = SEDIMENT RESERVOIR
- ST = SEDIMENT TRAP
- R.O.P. = RUN-ON PROTECTION
- PERIMETER CONTROL (WATTLES)
- CSD = CUT SLOPE DIVERSION (BERM TOE OF CUT SLOPE)
- D = FILL DIVERSION TO SEDIMENT TRAP
- VGB = VEGETATION BUFFER (UNDISTURBED LAND INSIDE PC)
- FCD = FLOW CONTROL DITCH
- CDM = CHECK DAM

SURVEYED BY: C.D.S.	DATE SURVEYED: 10-20-08
DRAWN BY: F.T.M.	DATE DRAWN: 10-24-08
SCALE: 1" = 60'	REVISED: J.A.S. 11-20-09

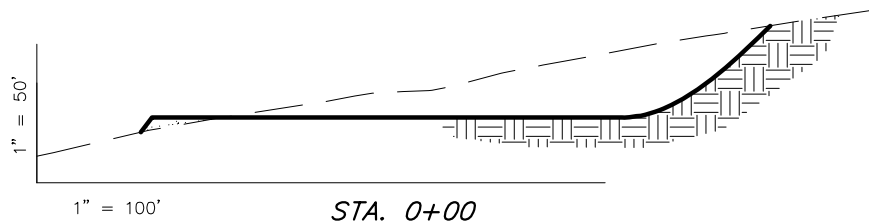
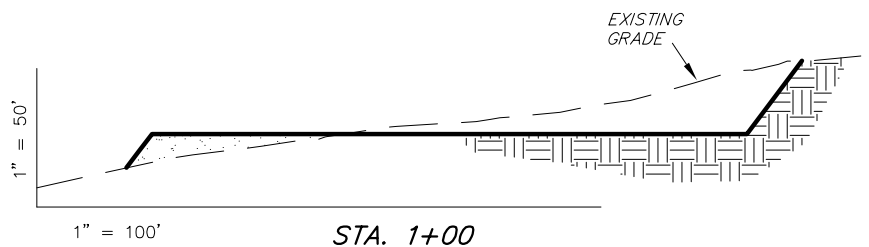
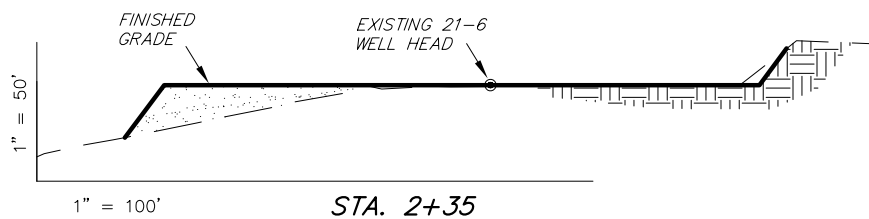
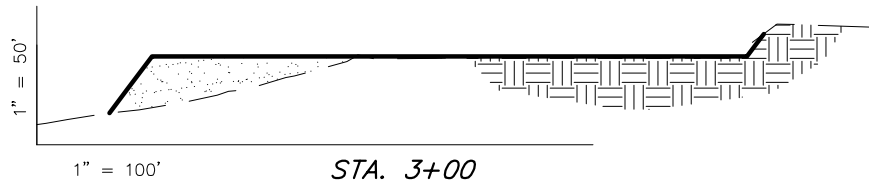
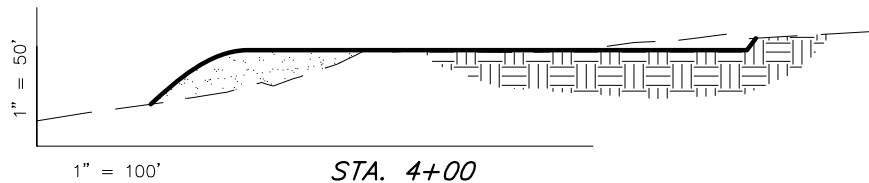
**Tri State**  
Land Surveying, Inc.  
180 NORTH VERNAL AVE. VERNAL, UTAH 84078  
(435) 781-2501

SHEET  
4  
OF 11

# ENCANA OIL & GAS (USA) INC

## WELL PAD (F210U)

Section 21, T8S, R96W, 6th P.M.



### ESTIMATED EARTHWORK QUANTITIES (No Shrink or swell adjustments have been used) (Expressed in Cubic Yards)

ITEM	CUT	FILL	EXCESS	FRAC PIT	6" TOPSOIL
PAD	11,230	10,670	560	Frac Pit is not included in Pad Cut	Topsoil is not included in Pad Cut
TOTALS	11,230	10,670	560	4,690	1,920

NOTE:  
UNLESS OTHERWISE NOTED  
CUT SLOPES ARE AT 1:1  
FILL SLOPES ARE AT 1.5:1

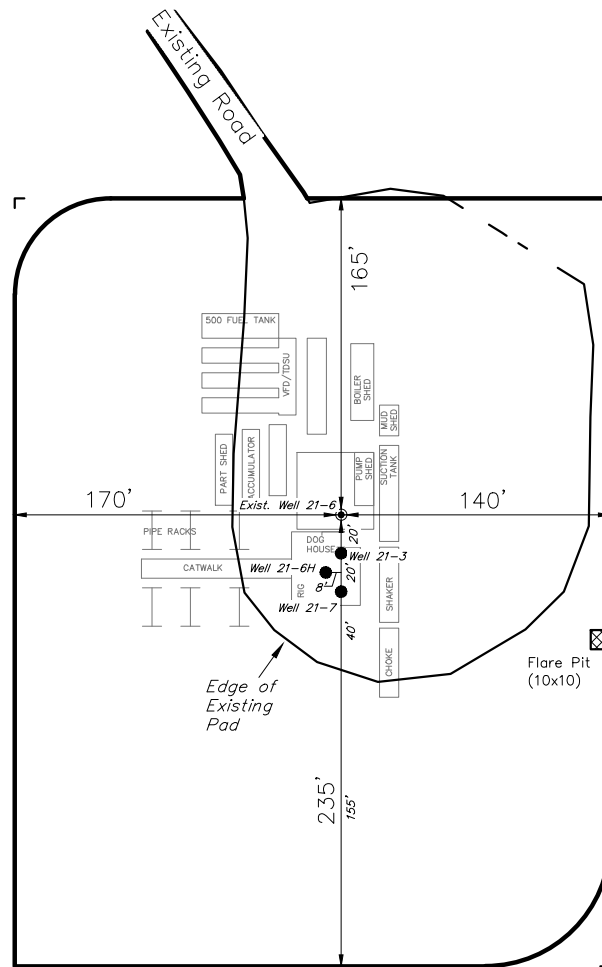
SURVEYED BY: C.D.S. DATE SURVEYED: 10-20-08  
DRAWN BY: F.T.M. DATE DRAWN: 10-24-08  
SCALE: 1" = 60' REVISED: M.W. 05-28-09

**Tri State**  
Land Surveying, Inc.  
180 NORTH VERNAL AVE. VERNAL, UTAH 84078  
(435) 781-2501

SHEET  
**5**  
OF 11

# ENCANA OIL & GAS (USA) INC

## TYPICAL RIG LAYOUT WELL PAD (F210U)



Note:  
Flare pit is to be  
located at least  
100' from well head.

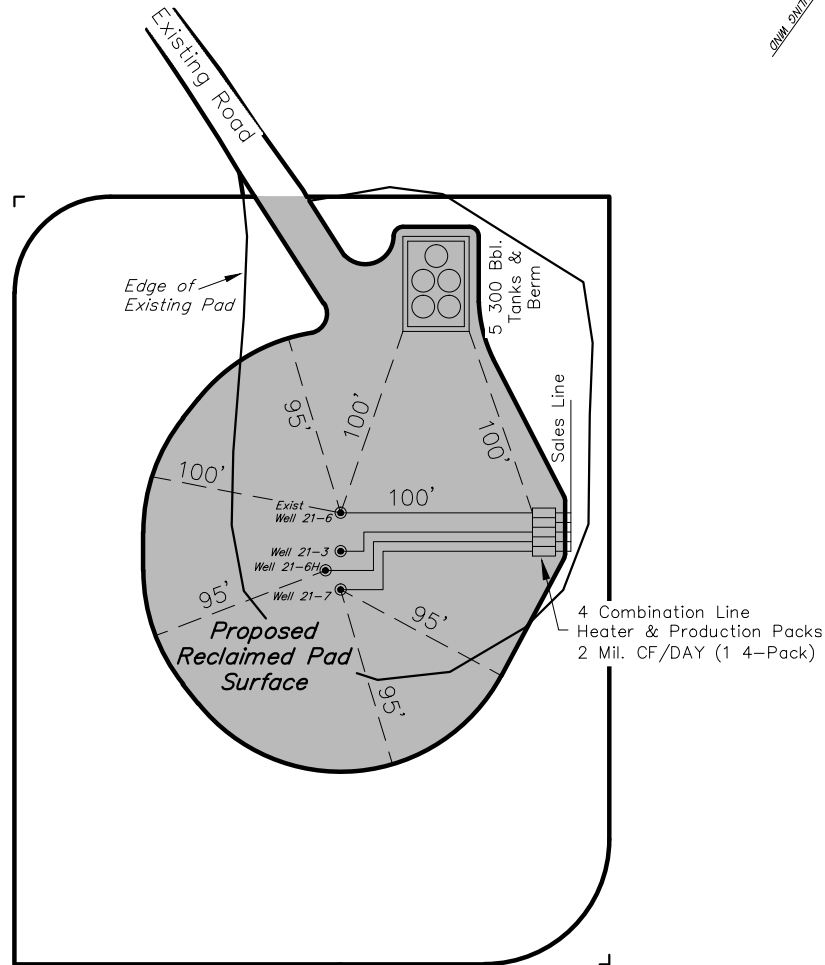
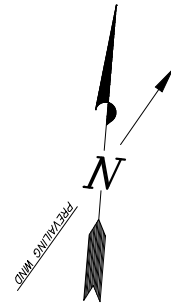
SURVEYED BY: C.D.S.	DATE SURVEYED: 10-20-08
DRAWN BY: F.T.M.	DATE DRAWN: 10-24-08
SCALE: 1" = 60'	REVISED: J.A.S. 11-20-09

*Tri State*  
Land Surveying, Inc.  
180 NORTH VERNAL AVE. VERNAL, UTAH 84078  
(435) 781-2501

SHEET  
6  
OF 11

# ENCANA OIL & GAS (USA) INC

## PRODUCTION SCHEMATIC WELL PAD (F210U)



Area of Proposed  
Reclaimed Pad  
Surface = 1.02 Acres

Note:  
Actual Equipment Layout and  
Reclaimed Pad Surface Area  
May Change do to Production  
Requirements or Site Conditions.

Note:  
Reclaimed Pad to have storm  
water Management BMP's Per  
Encana Oil & Gas (USA) Inc.  
BMP Manual.

SURVEYED BY: C.D.S.	DATE SURVEYED: 10-20-08
DRAWN BY: F.T.M.	DATE DRAWN: 10-24-08
SCALE: 1" = 60'	REVISED: J.A.S. 11-20-09

**Tri State**  
Land Surveying, Inc.  
(435) 781-2501  
180 NORTH VERNAL AVE. VERNAL, UTAH 84078

SHEET  
**7**  
OF 11

# ENCANA OIL & GAS (USA) INC

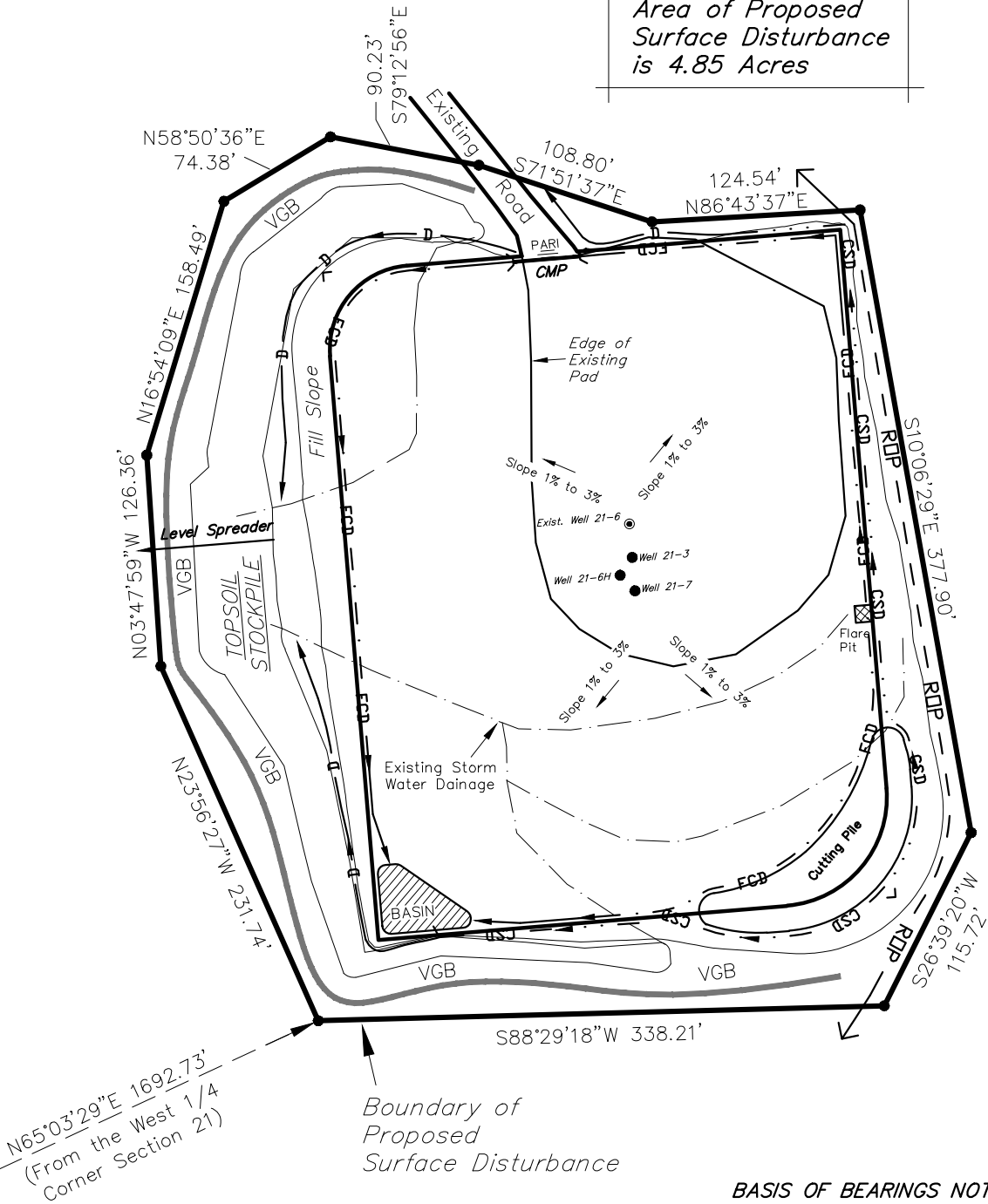
## SURFACE DISTURBANCE AREA

### WELL PAD (F210U)

Section 21, T8S, R96W, 6th P.M.



Area of Proposed  
Surface Disturbance  
is 4.85 Acres



#### BASIS OF BEARINGS NOTE:

Basis of Bearings is the which is taken from Global Positioning Satellite observations to bear N00°22'12"W a measured distance of 2653.21'.

SURVEYED BY: C.D.S. DATE SURVEYED: 10-20-08  
DRAWN BY: F.T.M. DATE DRAWN: 10-24-08  
SCALE: 1" = 100' REVISED: J.A.S. 11-20-09

**Tri State**  
Land Surveying, Inc.  
(435) 781-2501  
180 NORTH VERNAL AVE. VERNAL, UTAH 84078

SHEET  
8  
OF 11