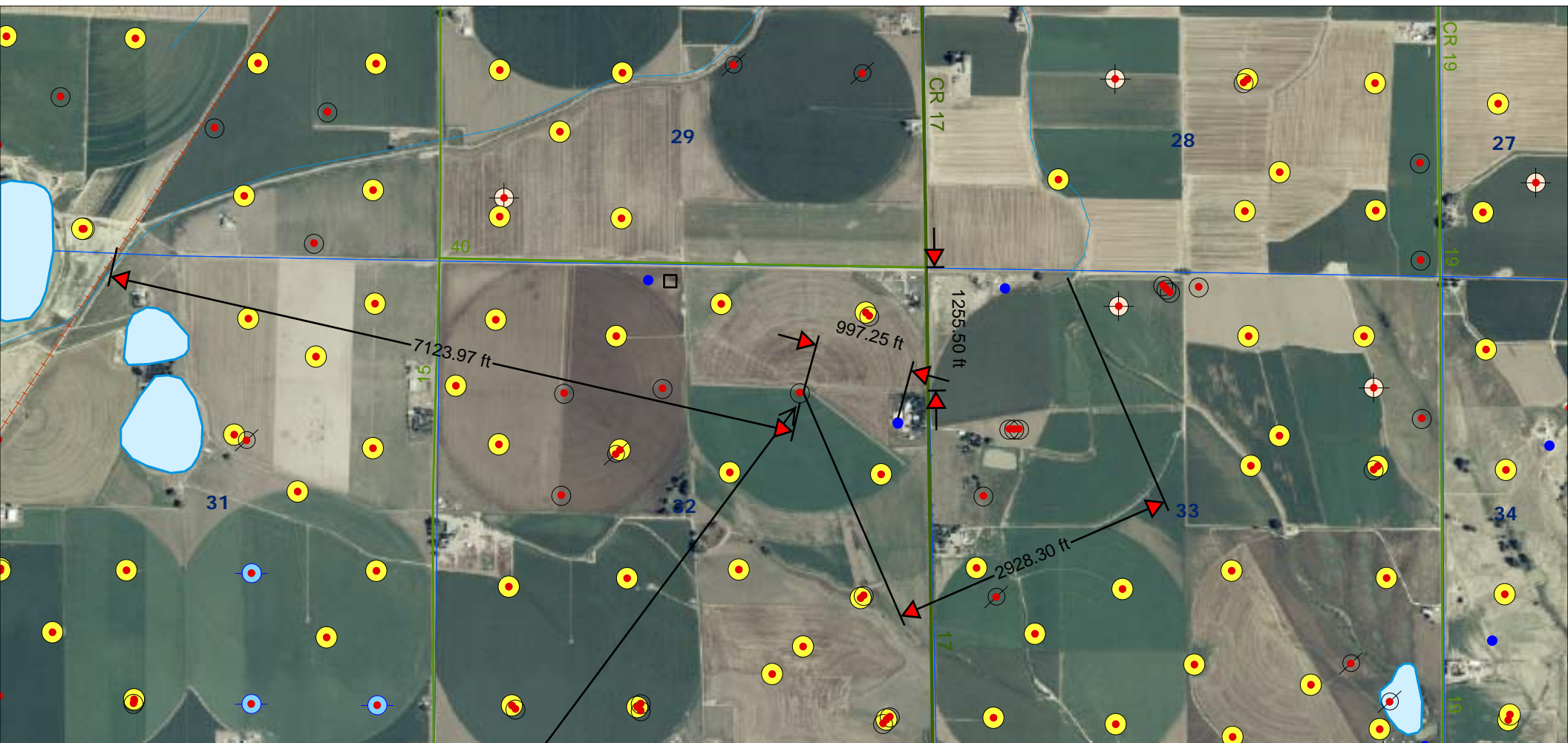
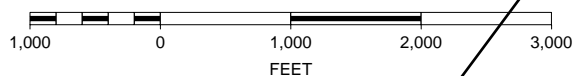


KPK planned locations: Hepp #18-32R SWNW; Hepp #21-32R NENW; Hepp #22-32R SWNW; Camenisch #1-32-41R NENE;
Camenisch #17-32R SWNE; Camenisch #9-32-40 NESE; Camenisch #16-32-37R SESE; Camenisch #16-32-39R SESE;
Anderson #14-32-23 SESW; Frank #14-32-36 SESW; Frank #13-32-35 SWSW



SCALE 1 : 14,104



Camenisch #17-32R

K. P. Kauffman Company, Inc.

Cultural and natural siting (including water wells)

Section 32-T4N-R67W

Weld Co., Colorado

