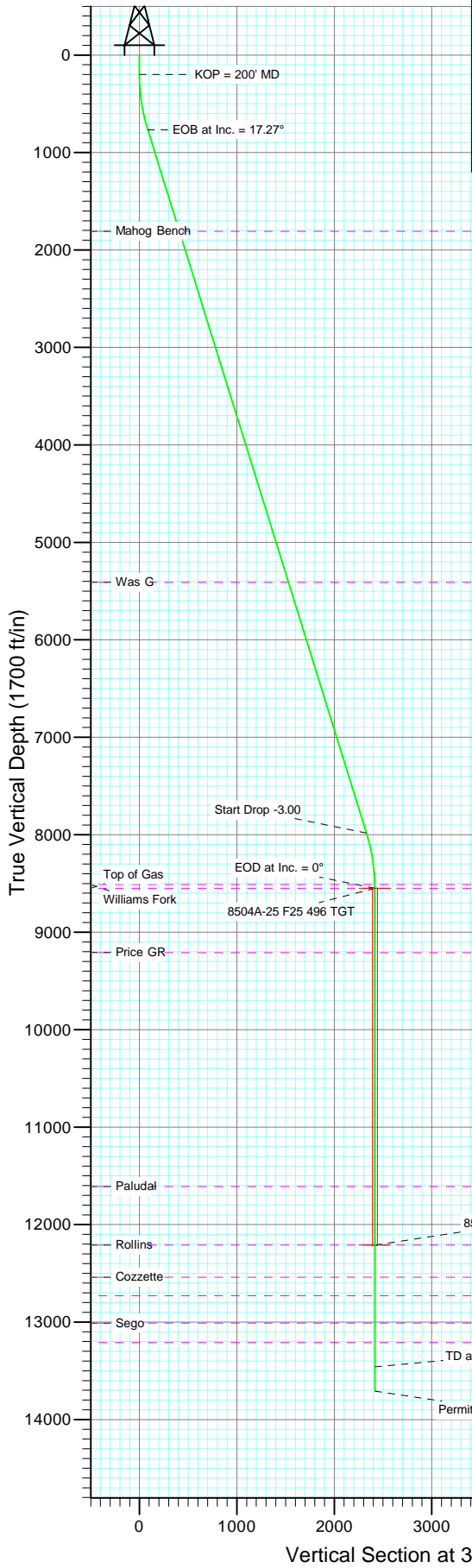
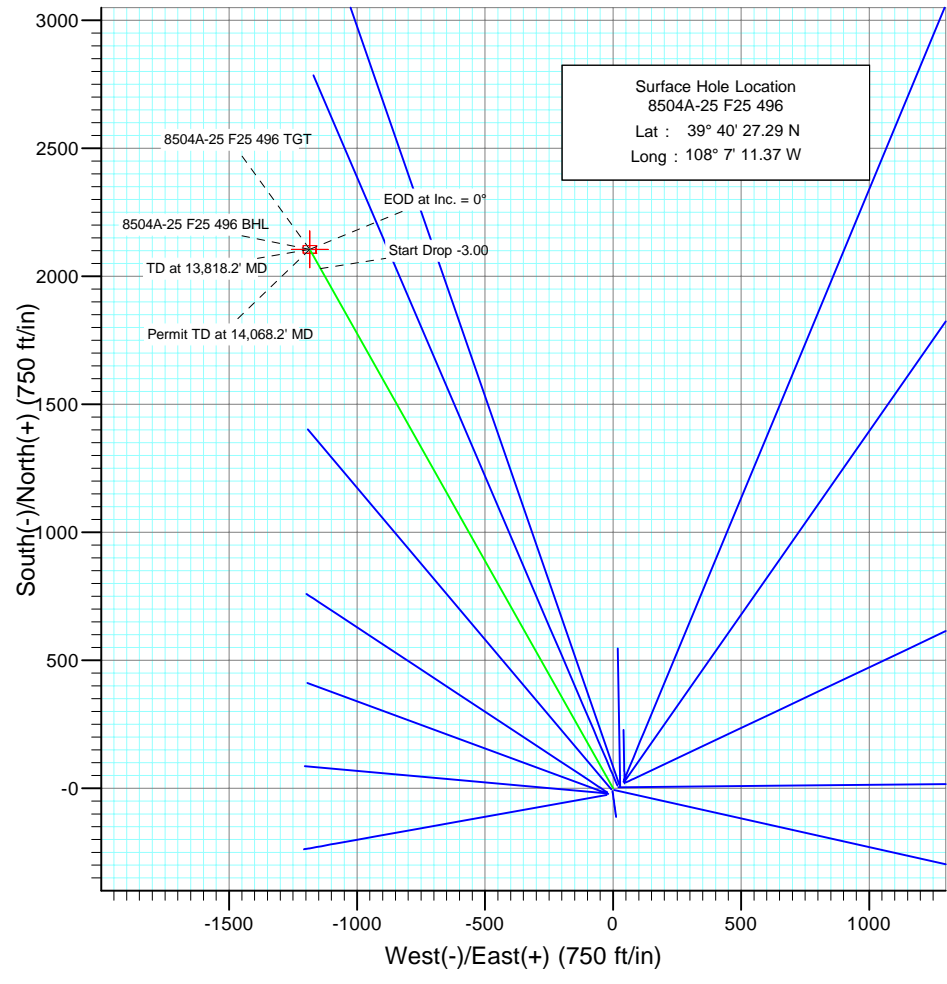




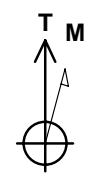
Project: Story Gulch
 Site: F25 496
 Well: 8504A-25 F25 496
 Wellbore: DD
 Design: Plan #1



SECTION DETAILS										
Sec	MD	Inc	Azi	TVD	+N/-S	+E/-W	DLeg	TFace	VSec	Target
1	0.0	0.00	0.00	0.0	0.0	0.0	0.00	0.00	0.0	
2	200.0	0.00	0.00	200.0	0.0	0.0	0.00	0.00	0.0	
3	775.8	17.27	330.62	767.1	75.1	-42.3	3.00	330.62	86.1	
4	8332.4	17.27	330.62	7982.9	2030.2	-1143.2	0.00	0.00	2329.9	
5	8908.2	0.00	0.00	8550.0	2105.2	-1185.4	3.00	180.00	2416.0	8504A-25 F25 496 TGT
6	12568.2	0.00	0.00	12210.0	2105.2	-1185.4	0.00	0.00	2416.0	8504A-25 F25 496 BHL
7	13818.2	0.00	0.00	13460.0	2105.2	-1185.4	0.00	0.00	2416.0	
8	14068.2	0.00	0.00	13710.0	2105.2	-1185.4	0.00	0.00	2416.0	



Bottom Hole Location
 8504A-25 F25 496
 Lat : 39° 40' 48.10 N
 Long. : 108° 7' 26.53 W



Azimuths to True North
 Magnetic North: 10.64°
 Magnetic Field
 Strength: 52519.3snT
 Dip Angle: 65.92°
 Date: 9/1/2009
 Model: IGRF200510

FORMATION TOP DETAILS			
TVDPath	MDPath	Formation	
1810.0	1867.9	Mahog Bench	
5410.0	5638.0	Was G	
8510.0	8868.2	Williams Fork	
8550.0	8908.2	Top of Gas	
9210.0	9568.2	Price GR	
11610.0	11968.2	Paludal	
12210.0	12568.2	Rollins	
12540.0	12898.2	Cozzette	
12730.0	13088.2	Corcoran	
13010.0	13368.2	Sego	
13210.0	13568.2	L Sego	

DESIGN DETAILS: Plan #1					
Job #95xxx: KR					
KBE @ 8320.0ft (Original Well Elev)					
Target	Azimuth	Origin	N/S	E/W	From TVD
8504A-25 F25 496 BHL	330.62	Slot	0.0	0.0	0.0

Planning Report

Database:	US EDM 2003.21 Multi User Db	Local Co-ordinate Reference:	Well 8504A-25 F25 496
Company:	EnCana Oil & Gas (USA) Inc	TVD Reference:	KBE @ 8320.0ft (Original Well Elev)
Project:	Story Gulch	MD Reference:	KBE @ 8320.0ft (Original Well Elev)
Site:	F25 496	North Reference:	True
Well:	8504A-25 F25 496	Survey Calculation Method:	Minimum Curvature
Wellbore:	DD		
Design:	Plan #1		

Project	Story Gulch		
Map System:	US State Plane 1983	System Datum:	Mean Sea Level
Geo Datum:	North American Datum 1983		
Map Zone:	Colorado Central Zone		

Site	F25 496				
Site Position:		Northing:	1,681,091.06 ft	Latitude:	39° 40' 27.10 N
From:	Lat/Long	Easting:	2,262,632.54 ft	Longitude:	108° 7' 11.76 W
Position Uncertainty:	0.0 ft	Slot Radius:	in	Grid Convergence:	-1.65 °

Well	8504A-25 F25 496					
Well Position	+N/-S	0.0 ft	Northing:	1,681,109.62 ft	Latitude:	39° 40' 27.29 N
	+E/-W	0.0 ft	Easting:	2,262,663.41 ft	Longitude:	108° 7' 11.37 W
Position Uncertainty		0.0 ft	Wellhead Elevation:	ft	Ground Level:	8,298.0 ft

Wellbore	DD				
Magnetics	Model Name	Sample Date	Declination (°)	Dip Angle (°)	Field Strength (nT)
	IGRF200510	9/1/2009	10.64	65.92	52,519

Design	Plan #1			
Audit Notes:				
Version:	Phase:	PLAN	Tie On Depth:	0.0
Vertical Section:	Depth From (TVD) (ft)	+N/-S (ft)	+E/-W (ft)	Direction (°)
	0.0	0.0	0.0	330.62

Plan Sections										
Measured Depth (ft)	Inclination (°)	Azimuth (°)	Vertical Depth (ft)	+N/-S (ft)	+E/-W (ft)	Dogleg Rate (°/100ft)	Build Rate (°/100ft)	Turn Rate (°/100ft)	TFO (°)	Target
0.0	0.00	0.00	0.0	0.0	0.0	0.00	0.00	0.00	0.00	
200.0	0.00	0.00	200.0	0.0	0.0	0.00	0.00	0.00	0.00	
775.8	17.27	330.62	767.1	75.1	-42.3	3.00	3.00	0.00	330.62	
8,332.4	17.27	330.62	7,982.9	2,030.2	-1,143.2	0.00	0.00	0.00	0.00	
8,908.2	0.00	0.00	8,550.0	2,105.2	-1,185.4	3.00	-3.00	0.00	180.00	8504A-25 F25 496 TC
12,568.2	0.00	0.00	12,210.0	2,105.2	-1,185.4	0.00	0.00	0.00	0.00	8504A-25 F25 496 BT
13,818.2	0.00	0.00	13,460.0	2,105.2	-1,185.4	0.00	0.00	0.00	0.00	
14,068.2	0.00	0.00	13,710.0	2,105.2	-1,185.4	0.00	0.00	0.00	0.00	

Planning Report

Database:	US EDM 2003.21 Multi User Db	Local Co-ordinate Reference:	Well 8504A-25 F25 496
Company:	EnCana Oil & Gas (USA) Inc	TVD Reference:	KBE @ 8320.0ft (Original Well Elev)
Project:	Story Gulch	MD Reference:	KBE @ 8320.0ft (Original Well Elev)
Site:	F25 496	North Reference:	True
Well:	8504A-25 F25 496	Survey Calculation Method:	Minimum Curvature
Wellbore:	DD		
Design:	Plan #1		

Planned Survey									
Measured Depth (ft)	Inclination (°)	Azimuth (°)	Vertical Depth (ft)	+N/-S (ft)	+E/-W (ft)	Vertical Section (ft)	Dogleg Rate (°/100ft)	Build Rate (°/100ft)	Comments / Formations
0.0	0.00	0.00	0.0	0.0	0.0	0.0	0.00	0.00	
100.0	0.00	0.00	100.0	0.0	0.0	0.0	0.00	0.00	
200.0	0.00	0.00	200.0	0.0	0.0	0.0	0.00	0.00	KOP = 200' MD
300.0	3.00	330.62	300.0	2.3	-1.3	2.6	3.00	3.00	
400.0	6.00	330.62	399.6	9.1	-5.1	10.5	3.00	3.00	
500.0	9.00	330.62	498.8	20.5	-11.5	23.5	3.00	3.00	
600.0	12.00	330.62	597.1	36.4	-20.5	41.7	3.00	3.00	
700.0	15.00	330.62	694.3	56.7	-31.9	65.1	3.00	3.00	
775.8	17.27	330.62	767.1	75.1	-42.3	86.1	3.00	3.00	EOB at Inc. = 17.27°
800.0	17.27	330.62	790.2	81.3	-45.8	93.3	0.00	0.00	
900.0	17.27	330.62	885.7	107.2	-60.4	123.0	0.00	0.00	
1,000.0	17.27	330.62	981.2	133.1	-74.9	152.7	0.00	0.00	
1,100.0	17.27	330.62	1,076.7	158.9	-89.5	182.4	0.00	0.00	
1,200.0	17.27	330.62	1,172.2	184.8	-104.1	212.1	0.00	0.00	
1,300.0	17.27	330.62	1,267.7	210.7	-118.6	241.8	0.00	0.00	
1,400.0	17.27	330.62	1,363.2	236.6	-133.2	271.5	0.00	0.00	
1,500.0	17.27	330.62	1,458.7	262.4	-147.8	301.2	0.00	0.00	
1,600.0	17.27	330.62	1,554.1	288.3	-162.3	330.9	0.00	0.00	
1,700.0	17.27	330.62	1,649.6	314.2	-176.9	360.6	0.00	0.00	
1,800.0	17.27	330.62	1,745.1	340.1	-191.5	390.3	0.00	0.00	
1,867.9	17.27	330.62	1,810.0	357.6	-201.4	410.4	0.00	0.00	Mahog Bench
1,900.0	17.27	330.62	1,840.6	365.9	-206.0	419.9	0.00	0.00	
2,000.0	17.27	330.62	1,936.1	391.8	-220.6	449.6	0.00	0.00	
2,100.0	17.27	330.62	2,031.6	417.7	-235.2	479.3	0.00	0.00	
2,200.0	17.27	330.62	2,127.1	443.5	-249.8	509.0	0.00	0.00	
2,300.0	17.27	330.62	2,222.6	469.4	-264.3	538.7	0.00	0.00	
2,400.0	17.27	330.62	2,318.1	495.3	-278.9	568.4	0.00	0.00	
2,500.0	17.27	330.62	2,413.6	521.2	-293.5	598.1	0.00	0.00	
2,600.0	17.27	330.62	2,509.0	547.0	-308.0	627.8	0.00	0.00	
2,700.0	17.27	330.62	2,604.5	572.9	-322.6	657.5	0.00	0.00	
2,800.0	17.27	330.62	2,700.0	598.8	-337.2	687.2	0.00	0.00	
2,900.0	17.27	330.62	2,795.5	624.7	-351.7	716.9	0.00	0.00	
3,000.0	17.27	330.62	2,891.0	650.5	-366.3	746.6	0.00	0.00	
3,100.0	17.27	330.62	2,986.5	676.4	-380.9	776.3	0.00	0.00	
3,200.0	17.27	330.62	3,082.0	702.3	-395.4	806.0	0.00	0.00	
3,300.0	17.27	330.62	3,177.5	728.1	-410.0	835.6	0.00	0.00	
3,400.0	17.27	330.62	3,273.0	754.0	-424.6	865.3	0.00	0.00	
3,500.0	17.27	330.62	3,368.5	779.9	-439.1	895.0	0.00	0.00	
3,600.0	17.27	330.62	3,463.9	805.8	-453.7	924.7	0.00	0.00	
3,700.0	17.27	330.62	3,559.4	831.6	-468.3	954.4	0.00	0.00	
3,800.0	17.27	330.62	3,654.9	857.5	-482.9	984.1	0.00	0.00	
3,900.0	17.27	330.62	3,750.4	883.4	-497.4	1,013.8	0.00	0.00	
4,000.0	17.27	330.62	3,845.9	909.3	-512.0	1,043.5	0.00	0.00	
4,100.0	17.27	330.62	3,941.4	935.1	-526.6	1,073.2	0.00	0.00	
4,200.0	17.27	330.62	4,036.9	961.0	-541.1	1,102.9	0.00	0.00	
4,300.0	17.27	330.62	4,132.4	986.9	-555.7	1,132.6	0.00	0.00	
4,400.0	17.27	330.62	4,227.9	1,012.7	-570.3	1,162.3	0.00	0.00	
4,500.0	17.27	330.62	4,323.4	1,038.6	-584.8	1,192.0	0.00	0.00	
4,600.0	17.27	330.62	4,418.8	1,064.5	-599.4	1,221.6	0.00	0.00	
4,700.0	17.27	330.62	4,514.3	1,090.4	-614.0	1,251.3	0.00	0.00	
4,800.0	17.27	330.62	4,609.8	1,116.2	-628.5	1,281.0	0.00	0.00	
4,900.0	17.27	330.62	4,705.3	1,142.1	-643.1	1,310.7	0.00	0.00	

Planning Report

Database:	US EDM 2003.21 Multi User Db	Local Co-ordinate Reference:	Well 8504A-25 F25 496
Company:	EnCana Oil & Gas (USA) Inc	TVD Reference:	KBE @ 8320.0ft (Original Well Elev)
Project:	Story Gulch	MD Reference:	KBE @ 8320.0ft (Original Well Elev)
Site:	F25 496	North Reference:	True
Well:	8504A-25 F25 496	Survey Calculation Method:	Minimum Curvature
Wellbore:	DD		
Design:	Plan #1		

Planned Survey									
Measured Depth (ft)	Inclination (°)	Azimuth (°)	Vertical Depth (ft)	+N/-S (ft)	+E/-W (ft)	Vertical Section (ft)	Dogleg Rate (°/100ft)	Build Rate (°/100ft)	Comments / Formations
5,000.0	17.27	330.62	4,800.8	1,168.0	-657.7	1,340.4	0.00	0.00	
5,100.0	17.27	330.62	4,896.3	1,193.9	-672.2	1,370.1	0.00	0.00	
5,200.0	17.27	330.62	4,991.8	1,219.7	-686.8	1,399.8	0.00	0.00	
5,300.0	17.27	330.62	5,087.3	1,245.6	-701.4	1,429.5	0.00	0.00	
5,400.0	17.27	330.62	5,182.8	1,271.5	-716.0	1,459.2	0.00	0.00	
5,500.0	17.27	330.62	5,278.3	1,297.3	-730.5	1,488.9	0.00	0.00	
5,600.0	17.27	330.62	5,373.7	1,323.2	-745.1	1,518.6	0.00	0.00	
5,638.0	17.27	330.62	5,410.0	1,333.0	-750.6	1,529.8	0.00	0.00	Was G
5,700.0	17.27	330.62	5,469.2	1,349.1	-759.7	1,548.3	0.00	0.00	
5,800.0	17.27	330.62	5,564.7	1,375.0	-774.2	1,578.0	0.00	0.00	
5,900.0	17.27	330.62	5,660.2	1,400.8	-788.8	1,607.7	0.00	0.00	
6,000.0	17.27	330.62	5,755.7	1,426.7	-803.4	1,637.3	0.00	0.00	
6,100.0	17.27	330.62	5,851.2	1,452.6	-817.9	1,667.0	0.00	0.00	
6,200.0	17.27	330.62	5,946.7	1,478.5	-832.5	1,696.7	0.00	0.00	
6,300.0	17.27	330.62	6,042.2	1,504.3	-847.1	1,726.4	0.00	0.00	
6,400.0	17.27	330.62	6,137.7	1,530.2	-861.6	1,756.1	0.00	0.00	
6,500.0	17.27	330.62	6,233.2	1,556.1	-876.2	1,785.8	0.00	0.00	
6,600.0	17.27	330.62	6,328.6	1,581.9	-890.8	1,815.5	0.00	0.00	
6,700.0	17.27	330.62	6,424.1	1,607.8	-905.3	1,845.2	0.00	0.00	
6,800.0	17.27	330.62	6,519.6	1,633.7	-919.9	1,874.9	0.00	0.00	
6,900.0	17.27	330.62	6,615.1	1,659.6	-934.5	1,904.6	0.00	0.00	
7,000.0	17.27	330.62	6,710.6	1,685.4	-949.1	1,934.3	0.00	0.00	
7,100.0	17.27	330.62	6,806.1	1,711.3	-963.6	1,964.0	0.00	0.00	
7,200.0	17.27	330.62	6,901.6	1,737.2	-978.2	1,993.7	0.00	0.00	
7,300.0	17.27	330.62	6,997.1	1,763.1	-992.8	2,023.3	0.00	0.00	
7,400.0	17.27	330.62	7,092.6	1,788.9	-1,007.3	2,053.0	0.00	0.00	
7,500.0	17.27	330.62	7,188.1	1,814.8	-1,021.9	2,082.7	0.00	0.00	
7,600.0	17.27	330.62	7,283.5	1,840.7	-1,036.5	2,112.4	0.00	0.00	
7,700.0	17.27	330.62	7,379.0	1,866.5	-1,051.0	2,142.1	0.00	0.00	
7,800.0	17.27	330.62	7,474.5	1,892.4	-1,065.6	2,171.8	0.00	0.00	
7,900.0	17.27	330.62	7,570.0	1,918.3	-1,080.2	2,201.5	0.00	0.00	
8,000.0	17.27	330.62	7,665.5	1,944.2	-1,094.7	2,231.2	0.00	0.00	
8,100.0	17.27	330.62	7,761.0	1,970.0	-1,109.3	2,260.9	0.00	0.00	
8,200.0	17.27	330.62	7,856.5	1,995.9	-1,123.9	2,290.6	0.00	0.00	
8,300.0	17.27	330.62	7,952.0	2,021.8	-1,138.5	2,320.3	0.00	0.00	
8,332.4	17.27	330.62	7,982.9	2,030.2	-1,143.2	2,329.9	0.00	0.00	Start Drop -3.00
8,400.0	15.24	330.62	8,047.8	2,046.7	-1,152.5	2,348.8	3.00	-3.00	
8,500.0	12.24	330.62	8,144.9	2,067.4	-1,164.1	2,372.6	3.00	-3.00	
8,600.0	9.24	330.62	8,243.2	2,083.6	-1,173.3	2,391.2	3.00	-3.00	
8,700.0	6.24	330.62	8,342.2	2,095.3	-1,179.9	2,404.7	3.00	-3.00	
8,800.0	3.24	330.62	8,441.9	2,102.5	-1,183.9	2,413.0	3.00	-3.00	
8,868.2	1.20	330.62	8,510.0	2,104.9	-1,185.2	2,415.6	3.00	-3.00	Williams Fork
8,900.0	0.24	330.62	8,541.8	2,105.2	-1,185.4	2,416.0	3.00	-3.00	
8,908.2	0.00	0.00	8,550.0	2,105.2	-1,185.4	2,416.0	3.00	-3.00	EOD at Inc. = 0° - Top of Gas - 8504A-25 F25 4
9,000.0	0.00	0.00	8,641.8	2,105.2	-1,185.4	2,416.0	0.00	0.00	
9,100.0	0.00	0.00	8,741.8	2,105.2	-1,185.4	2,416.0	0.00	0.00	
9,200.0	0.00	0.00	8,841.8	2,105.2	-1,185.4	2,416.0	0.00	0.00	
9,300.0	0.00	0.00	8,941.8	2,105.2	-1,185.4	2,416.0	0.00	0.00	
9,400.0	0.00	0.00	9,041.8	2,105.2	-1,185.4	2,416.0	0.00	0.00	
9,500.0	0.00	0.00	9,141.8	2,105.2	-1,185.4	2,416.0	0.00	0.00	
9,568.2	0.00	0.00	9,210.0	2,105.2	-1,185.4	2,416.0	0.00	0.00	Price GR
9,600.0	0.00	0.00	9,241.8	2,105.2	-1,185.4	2,416.0	0.00	0.00	

Planning Report

Database:	US EDM 2003.21 Multi User Db	Local Co-ordinate Reference:	Well 8504A-25 F25 496
Company:	EnCana Oil & Gas (USA) Inc	TVD Reference:	KBE @ 8320.0ft (Original Well Elev)
Project:	Story Gulch	MD Reference:	KBE @ 8320.0ft (Original Well Elev)
Site:	F25 496	North Reference:	True
Well:	8504A-25 F25 496	Survey Calculation Method:	Minimum Curvature
Wellbore:	DD		
Design:	Plan #1		

Planned Survey									
Measured Depth (ft)	Inclination (°)	Azimuth (°)	Vertical Depth (ft)	+N/-S (ft)	+E/-W (ft)	Vertical Section (ft)	Dogleg Rate (°/100ft)	Build Rate (°/100ft)	Comments / Formations
9,700.0	0.00	0.00	9,341.8	2,105.2	-1,185.4	2,416.0	0.00	0.00	
9,800.0	0.00	0.00	9,441.8	2,105.2	-1,185.4	2,416.0	0.00	0.00	
9,900.0	0.00	0.00	9,541.8	2,105.2	-1,185.4	2,416.0	0.00	0.00	
10,000.0	0.00	0.00	9,641.8	2,105.2	-1,185.4	2,416.0	0.00	0.00	
10,100.0	0.00	0.00	9,741.8	2,105.2	-1,185.4	2,416.0	0.00	0.00	
10,200.0	0.00	0.00	9,841.8	2,105.2	-1,185.4	2,416.0	0.00	0.00	
10,300.0	0.00	0.00	9,941.8	2,105.2	-1,185.4	2,416.0	0.00	0.00	
10,400.0	0.00	0.00	10,041.8	2,105.2	-1,185.4	2,416.0	0.00	0.00	
10,500.0	0.00	0.00	10,141.8	2,105.2	-1,185.4	2,416.0	0.00	0.00	
10,600.0	0.00	0.00	10,241.8	2,105.2	-1,185.4	2,416.0	0.00	0.00	
10,700.0	0.00	0.00	10,341.8	2,105.2	-1,185.4	2,416.0	0.00	0.00	
10,800.0	0.00	0.00	10,441.8	2,105.2	-1,185.4	2,416.0	0.00	0.00	
10,900.0	0.00	0.00	10,541.8	2,105.2	-1,185.4	2,416.0	0.00	0.00	
11,000.0	0.00	0.00	10,641.8	2,105.2	-1,185.4	2,416.0	0.00	0.00	
11,100.0	0.00	0.00	10,741.8	2,105.2	-1,185.4	2,416.0	0.00	0.00	
11,200.0	0.00	0.00	10,841.8	2,105.2	-1,185.4	2,416.0	0.00	0.00	
11,300.0	0.00	0.00	10,941.8	2,105.2	-1,185.4	2,416.0	0.00	0.00	
11,400.0	0.00	0.00	11,041.8	2,105.2	-1,185.4	2,416.0	0.00	0.00	
11,500.0	0.00	0.00	11,141.8	2,105.2	-1,185.4	2,416.0	0.00	0.00	
11,600.0	0.00	0.00	11,241.8	2,105.2	-1,185.4	2,416.0	0.00	0.00	
11,700.0	0.00	0.00	11,341.8	2,105.2	-1,185.4	2,416.0	0.00	0.00	
11,800.0	0.00	0.00	11,441.8	2,105.2	-1,185.4	2,416.0	0.00	0.00	
11,900.0	0.00	0.00	11,541.8	2,105.2	-1,185.4	2,416.0	0.00	0.00	
11,968.2	0.00	0.00	11,610.0	2,105.2	-1,185.4	2,416.0	0.00	0.00	Paludal
12,000.0	0.00	0.00	11,641.8	2,105.2	-1,185.4	2,416.0	0.00	0.00	
12,100.0	0.00	0.00	11,741.8	2,105.2	-1,185.4	2,416.0	0.00	0.00	
12,200.0	0.00	0.00	11,841.8	2,105.2	-1,185.4	2,416.0	0.00	0.00	
12,300.0	0.00	0.00	11,941.8	2,105.2	-1,185.4	2,416.0	0.00	0.00	
12,400.0	0.00	0.00	12,041.8	2,105.2	-1,185.4	2,416.0	0.00	0.00	
12,500.0	0.00	0.00	12,141.8	2,105.2	-1,185.4	2,416.0	0.00	0.00	
12,568.2	0.00	0.00	12,210.0	2,105.2	-1,185.4	2,416.0	0.00	0.00	Rollins - 8504A-25 F25 496 BHL
12,600.0	0.00	0.00	12,241.8	2,105.2	-1,185.4	2,416.0	0.00	0.00	
12,700.0	0.00	0.00	12,341.8	2,105.2	-1,185.4	2,416.0	0.00	0.00	
12,800.0	0.00	0.00	12,441.8	2,105.2	-1,185.4	2,416.0	0.00	0.00	
12,898.2	0.00	0.00	12,540.0	2,105.2	-1,185.4	2,416.0	0.00	0.00	Cozzette
12,900.0	0.00	0.00	12,541.8	2,105.2	-1,185.4	2,416.0	0.00	0.00	
13,000.0	0.00	0.00	12,641.8	2,105.2	-1,185.4	2,416.0	0.00	0.00	
13,088.2	0.00	0.00	12,730.0	2,105.2	-1,185.4	2,416.0	0.00	0.00	Corcoran
13,100.0	0.00	0.00	12,741.8	2,105.2	-1,185.4	2,416.0	0.00	0.00	
13,200.0	0.00	0.00	12,841.8	2,105.2	-1,185.4	2,416.0	0.00	0.00	
13,300.0	0.00	0.00	12,941.8	2,105.2	-1,185.4	2,416.0	0.00	0.00	
13,368.2	0.00	0.00	13,010.0	2,105.2	-1,185.4	2,416.0	0.00	0.00	Sego
13,400.0	0.00	0.00	13,041.8	2,105.2	-1,185.4	2,416.0	0.00	0.00	
13,500.0	0.00	0.00	13,141.8	2,105.2	-1,185.4	2,416.0	0.00	0.00	
13,568.2	0.00	0.00	13,210.0	2,105.2	-1,185.4	2,416.0	0.00	0.00	L Sego
13,600.0	0.00	0.00	13,241.8	2,105.2	-1,185.4	2,416.0	0.00	0.00	
13,700.0	0.00	0.00	13,341.8	2,105.2	-1,185.4	2,416.0	0.00	0.00	
13,800.0	0.00	0.00	13,441.8	2,105.2	-1,185.4	2,416.0	0.00	0.00	
13,818.2	0.00	0.00	13,460.0	2,105.2	-1,185.4	2,416.0	0.00	0.00	TD at 13,818.2' MD
13,900.0	0.00	0.00	13,541.8	2,105.2	-1,185.4	2,416.0	0.00	0.00	
14,000.0	0.00	0.00	13,641.8	2,105.2	-1,185.4	2,416.0	0.00	0.00	
14,068.2	0.00	0.00	13,710.0	2,105.2	-1,185.4	2,416.0	0.00	0.00	

Planning Report

Database:	US EDM 2003.21 Multi User Db	Local Co-ordinate Reference:	Well 8504A-25 F25 496
Company:	EnCana Oil & Gas (USA) Inc	TVD Reference:	KBE @ 8320.0ft (Original Well Elev)
Project:	Story Gulch	MD Reference:	KBE @ 8320.0ft (Original Well Elev)
Site:	F25 496	North Reference:	True
Well:	8504A-25 F25 496	Survey Calculation Method:	Minimum Curvature
Wellbore:	DD		
Design:	Plan #1		

Planned Survey									
Measured Depth (ft)	Inclination (°)	Azimuth (°)	Vertical Depth (ft)	+N/-S (ft)	+E/-W (ft)	Vertical Section (ft)	Dogleg Rate (°/100ft)	Build Rate (°/100ft)	Comments / Formations

Targets									
Target Name	Dip Angle (°)	Dip Dir. (°)	TVD (ft)	+N/-S (ft)	+E/-W (ft)	Northing (ft)	Easting (ft)	Latitude	Longitude
8504A-25 F25 496 BHL - hit/miss target - Shape - plan hits target center - Rectangle (sides W30.0 H50.0 D0.0)	0.00	0.00	12,210.0	2,105.2	-1,185.4	1,683,248.14	2,261,539.17	39° 40' 48.10 N	108° 7' 26.53 W
8504A-25 F25 496 TGT - plan hits target center - Point	0.00	0.00	8,550.0	2,105.2	-1,185.4	1,683,248.14	2,261,539.17	39° 40' 48.10 N	108° 7' 26.53 W

Formations					
Measured Depth (ft)	Vertical Depth (ft)	Name	Lithology	Dip (°)	Dip Direction (°)
1,867.9	1,810.0	Mahog Bench		0.00	
5,638.0	5,410.0	Was G		0.00	
8,868.2	8,510.0	Williams Fork		0.00	
8,908.2	8,550.0	Top of Gas		0.00	
9,568.2	9,210.0	Price GR		0.00	
11,968.2	11,610.0	Paludal		0.00	
12,568.2	12,210.0	Rollins		0.00	
12,898.2	12,540.0	Cozzette		0.00	
13,088.2	12,730.0	Corcoran		0.00	
13,368.2	13,010.0	Sego		0.00	
13,568.2	13,210.0	L Sego		0.00	

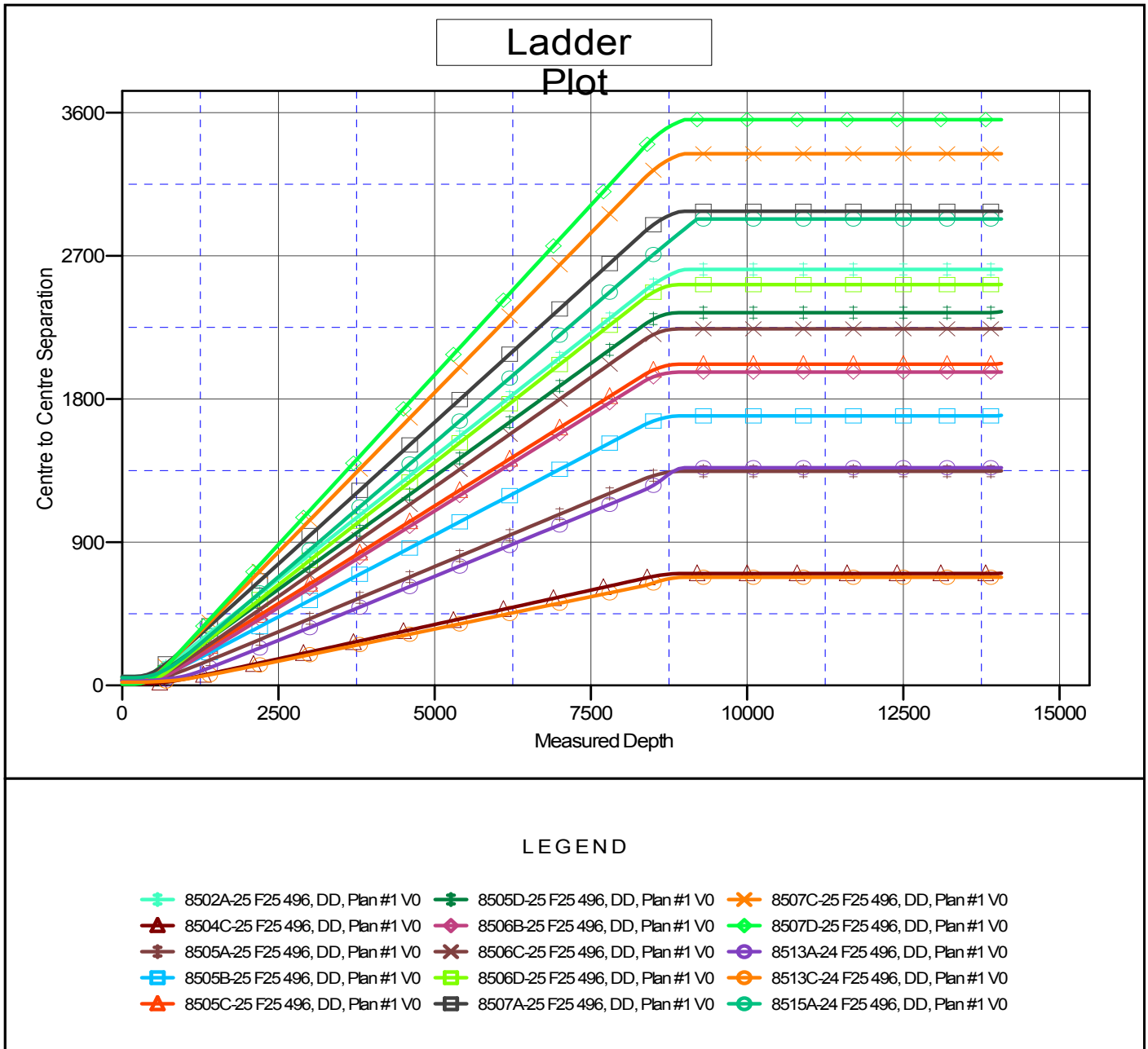
Plan Annotations				
Measured Depth (ft)	Vertical Depth (ft)	Local Coordinates		Comment
		+N/-S (ft)	+E/-W (ft)	
200.0	200.0	0.0	0.0	KOP = 200' MD
775.8	767.1	75.1	-42.3	EOB at Inc. = 17.27°
8,332.4	7,982.9	2,030.2	-1,143.2	Start Drop -3.00
8,908.2	8,550.0	2,105.2	-1,185.4	EOD at Inc. = 0°
13,818.2	13,460.0	2,105.2	-1,185.4	TD at 13,818.2' MD
14,068.2	13,710.0	2,105.2	-1,185.4	Permit TD at 14,068.2' MD

Anticollision Report

Company: EnCana Oil & Gas (USA) Inc	Local Co-ordinate Reference: Well 8504A-25 F25 496	TVD Reference: KBE @ 8320.0ft (Original Well Elev)
Project: Story Gulch	TVD Reference: KBE @ 8320.0ft (Original Well Elev)	MD Reference: KBE @ 8320.0ft (Original Well Elev)
Reference Site: F25 496	North Reference: True	Survey Calculation Method: Minimum Curvature
Site Error: 0.0ft	Output errors are at 2.00 sigma	Database: US EDM 2003.21 Multi User Db
Reference Well: 8504A-25 F25 496	Offset TVD Reference: Offset Datum	
Well Error: 0.0ft		
Reference Wellbore DD		
Reference Design: Plan #1		

Reference Depths are relative to KBE @ 8320.0ft (Original Well Elev)
 Offset Depths are relative to Offset Datum
 Central Meridian is 105° 30' 0.00 W °

Coordinates are relative to: 8504A-25 F25 496
 Coordinate System is US State Plane 1983, Colorado Central Zone
 Grid Convergence at Surface is: -1.65°



CC - Min centre to center distance or convergent point, SF - min separation factor, ES - min ellipse separation