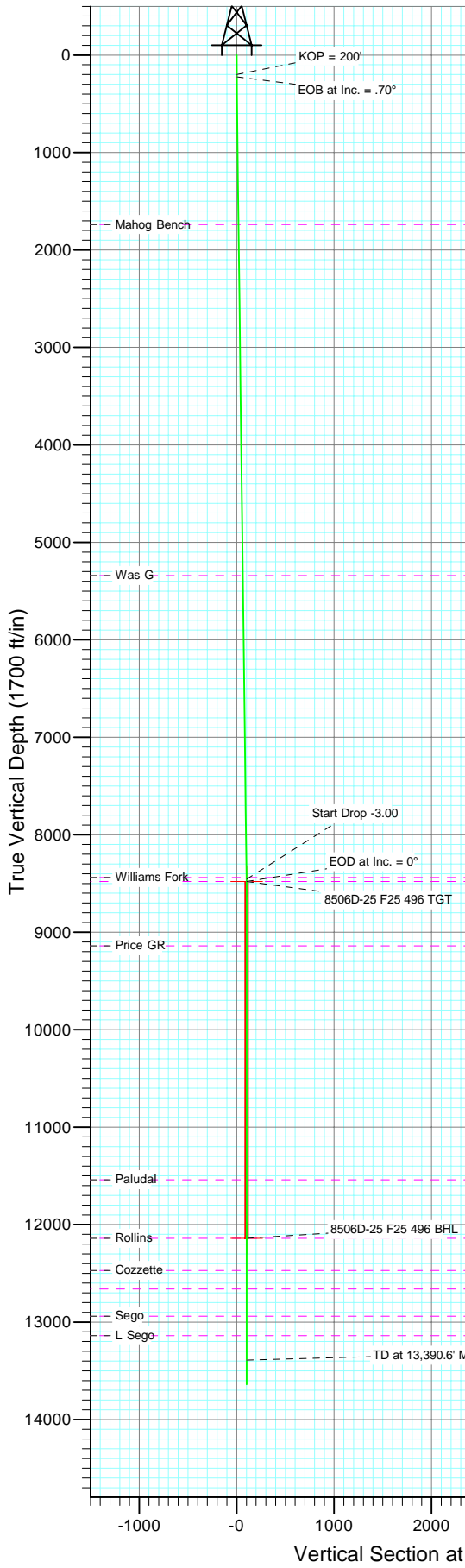
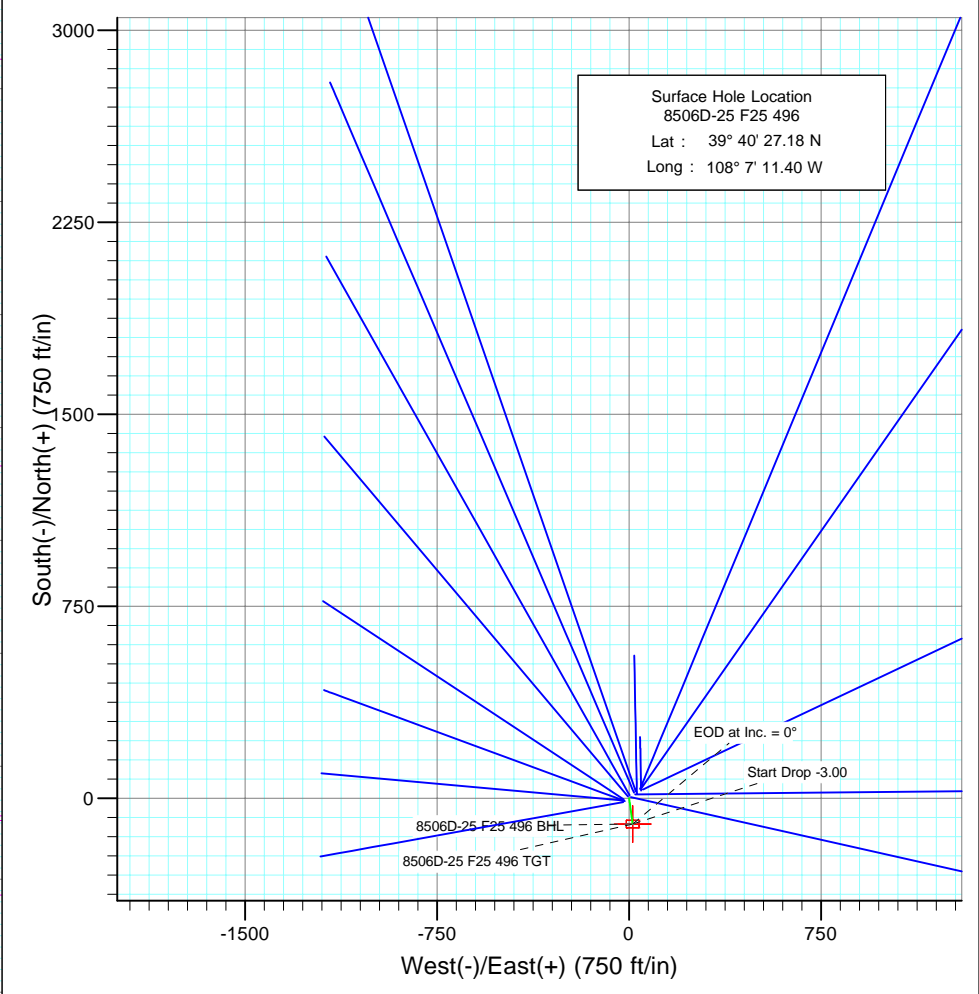




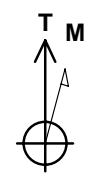
Project: Story Gulch
 Site: F25 496
 Well: 8506D-25 F25 496
 Wellbore: DD
 Design: Plan #1



SECTION DETAILS										
Sec	MD	Inc	Azi	TVD	+N/-S	+E/-W	DLeg	TFace	VSec	Target
1	0.0	0.00	0.00	0.0	0.0	0.0	0.00	0.00	0.0	
2	200.0	0.00	0.00	200.0	0.0	0.0	0.00	0.00	0.0	
3	223.5	0.70	172.12	223.5	-0.1	0.0	3.00	172.12	0.1	
4	8457.1	0.70	172.12	8456.5	-100.5	13.9	0.00	0.00	101.4	
5	8480.6	0.00	0.00	8480.0	-100.6	13.9	3.00	180.00	101.6	8506D-25 F25 496 TGT
6	12140.6	0.00	0.00	12140.0	-100.6	13.9	0.00	0.00	101.6	8506D-25 F25 496 BHL
7	13390.6	0.00	0.00	13390.0	-100.6	13.9	0.00	0.00	101.6	
8	13640.6	0.00	0.00	13640.0	-100.6	13.9	0.00	0.00	101.6	



Bottom Hole Location
 8506D-25 F25 496
 Lat : 39° 40' 26.19 N
 Long. : 108° 7' 11.39816 W



Azimuths to True North
 Magnetic North: 10.64°
 Magnetic Field
 Strength: 52519.3snT
 Dip Angle: 65.92°
 Date: 9/1/2009
 Model: IGRF200510

FORMATION TOP DETAILS		
TVDPPath	MDPath	Formation
1740.0	1740.1	Mahog Bench
5340.0	5340.4	Was G
8440.0	8440.6	Williams Fork
8480.0	8480.6	Top of Gas
9140.0	9140.6	Price GR
11540.0	11540.6	Paludal
12140.0	12140.6	Rollins
12470.0	12470.6	Cozzette
12660.0	12660.6	Corcoran
12940.0	12940.6	Sego
13140.0	13140.6	L Segó

DESIGN DETAILS: Plan #1					
Job #95xxx: KR					
KBE @ 8320.0ft (Original Well Elev)					
Target	Azimuth	Origin	N/S	E/W	From TVD
8506D-25 F25 496 BHL	172.12	Slot	0.0	0.0	0.0

Planning Report

Database:	US EDM 2003.21 Multi User Db	Local Co-ordinate Reference:	Well 8506D-25 F25 496
Company:	EnCana Oil & Gas (USA) Inc	TVD Reference:	KBE @ 8320.0ft (Original Well Elev)
Project:	Story Gulch	MD Reference:	KBE @ 8320.0ft (Original Well Elev)
Site:	F25 496	North Reference:	True
Well:	8506D-25 F25 496	Survey Calculation Method:	Minimum Curvature
Wellbore:	DD		
Design:	Plan #1		

Project	Story Gulch		
Map System:	US State Plane 1983	System Datum:	Mean Sea Level
Geo Datum:	North American Datum 1983		
Map Zone:	Colorado Central Zone		

Site	F25 496				
Site Position:		Northing:	1,681,091.06 ft	Latitude:	39° 40' 27.10 N
From:	Lat/Long	Easting:	2,262,632.54 ft	Longitude:	108° 7' 11.76 W
Position Uncertainty:	0.0 ft	Slot Radius:	in	Grid Convergence:	-1.65 °

Well	8506D-25 F25 496					
Well Position	+N/-S	0.0 ft	Northing:	1,681,098.56 ft	Latitude:	39° 40' 27.18 N
	+E/-W	0.0 ft	Easting:	2,262,660.73 ft	Longitude:	108° 7' 11.40 W
Position Uncertainty		0.0 ft	Wellhead Elevation:	ft	Ground Level:	8,298.0 ft

Wellbore	DD				
Magnetics	Model Name	Sample Date	Declination (°)	Dip Angle (°)	Field Strength (nT)
	IGRF200510	9/1/2009	10.64	65.92	52,519

Design	Plan #1			
Audit Notes:				
Version:	Phase:	PLAN	Tie On Depth:	0.0
Vertical Section:	Depth From (TVD) (ft)	+N/-S (ft)	+E/-W (ft)	Direction (°)
	0.0	0.0	0.0	172.12

Plan Sections										
Measured Depth (ft)	Inclination (°)	Azimuth (°)	Vertical Depth (ft)	+N/-S (ft)	+E/-W (ft)	Dogleg Rate (°/100ft)	Build Rate (°/100ft)	Turn Rate (°/100ft)	TFO (°)	Target
0.0	0.00	0.00	0.0	0.0	0.0	0.00	0.00	0.00	0.00	
200.0	0.00	0.00	200.0	0.0	0.0	0.00	0.00	0.00	0.00	
223.5	0.70	172.12	223.5	-0.1	0.0	3.00	3.00	0.00	172.12	
8,457.1	0.70	172.12	8,456.5	-100.5	13.9	0.00	0.00	0.00	0.00	
8,480.6	0.00	0.00	8,480.0	-100.6	13.9	3.00	-3.00	0.00	180.00	8506D-25 F25 496 TC
12,140.6	0.00	0.00	12,140.0	-100.6	13.9	0.00	0.00	0.00	0.00	8506D-25 F25 496 BI
13,390.6	0.00	0.00	13,390.0	-100.6	13.9	0.00	0.00	0.00	0.00	
13,640.6	0.00	0.00	13,640.0	-100.6	13.9	0.00	0.00	0.00	0.00	

Planning Report

Database:	US EDM 2003.21 Multi User Db	Local Co-ordinate Reference:	Well 8506D-25 F25 496
Company:	EnCana Oil & Gas (USA) Inc	TVD Reference:	KBE @ 8320.0ft (Original Well Elev)
Project:	Story Gulch	MD Reference:	KBE @ 8320.0ft (Original Well Elev)
Site:	F25 496	North Reference:	True
Well:	8506D-25 F25 496	Survey Calculation Method:	Minimum Curvature
Wellbore:	DD		
Design:	Plan #1		

Planned Survey									
Measured Depth (ft)	Inclination (°)	Azimuth (°)	Vertical Depth (ft)	+N/-S (ft)	+E/-W (ft)	Vertical Section (ft)	Dogleg Rate (°/100ft)	Build Rate (°/100ft)	Comments / Formations
0.0	0.00	0.00	0.0	0.0	0.0	0.0	0.00	0.00	
100.0	0.00	0.00	100.0	0.0	0.0	0.0	0.00	0.00	
200.0	0.00	0.00	200.0	0.0	0.0	0.0	0.00	0.00	KOP = 200'
223.5	0.70	172.12	223.5	-0.1	0.0	0.1	3.00	3.00	EOB at Inc. = .70°
300.0	0.70	172.12	300.0	-1.1	0.1	1.1	0.00	0.00	
400.0	0.70	172.12	400.0	-2.3	0.3	2.3	0.00	0.00	
500.0	0.70	172.12	500.0	-3.5	0.5	3.5	0.00	0.00	
600.0	0.70	172.12	600.0	-4.7	0.7	4.8	0.00	0.00	
700.0	0.70	172.12	700.0	-5.9	0.8	6.0	0.00	0.00	
800.0	0.70	172.12	800.0	-7.2	1.0	7.2	0.00	0.00	
900.0	0.70	172.12	899.9	-8.4	1.2	8.5	0.00	0.00	
1,000.0	0.70	172.12	999.9	-9.6	1.3	9.7	0.00	0.00	
1,100.0	0.70	172.12	1,099.9	-10.8	1.5	10.9	0.00	0.00	
1,200.0	0.70	172.12	1,199.9	-12.0	1.7	12.2	0.00	0.00	
1,300.0	0.70	172.12	1,299.9	-13.3	1.8	13.4	0.00	0.00	
1,400.0	0.70	172.12	1,399.9	-14.5	2.0	14.6	0.00	0.00	
1,500.0	0.70	172.12	1,499.9	-15.7	2.2	15.8	0.00	0.00	
1,600.0	0.70	172.12	1,599.9	-16.9	2.3	17.1	0.00	0.00	
1,700.0	0.70	172.12	1,699.9	-18.1	2.5	18.3	0.00	0.00	
1,740.1	0.70	172.12	1,740.0	-18.6	2.6	18.8	0.00	0.00	Mahog Bench
1,800.0	0.70	172.12	1,799.9	-19.4	2.7	19.5	0.00	0.00	
1,900.0	0.70	172.12	1,899.9	-20.6	2.8	20.8	0.00	0.00	
2,000.0	0.70	172.12	1,999.9	-21.8	3.0	22.0	0.00	0.00	
2,100.0	0.70	172.12	2,099.9	-23.0	3.2	23.2	0.00	0.00	
2,200.0	0.70	172.12	2,199.8	-24.2	3.4	24.5	0.00	0.00	
2,300.0	0.70	172.12	2,299.8	-25.4	3.5	25.7	0.00	0.00	
2,400.0	0.70	172.12	2,399.8	-26.7	3.7	26.9	0.00	0.00	
2,500.0	0.70	172.12	2,499.8	-27.9	3.9	28.2	0.00	0.00	
2,600.0	0.70	172.12	2,599.8	-29.1	4.0	29.4	0.00	0.00	
2,700.0	0.70	172.12	2,699.8	-30.3	4.2	30.6	0.00	0.00	
2,800.0	0.70	172.12	2,799.8	-31.5	4.4	31.8	0.00	0.00	
2,900.0	0.70	172.12	2,899.8	-32.8	4.5	33.1	0.00	0.00	
3,000.0	0.70	172.12	2,999.8	-34.0	4.7	34.3	0.00	0.00	
3,100.0	0.70	172.12	3,099.8	-35.2	4.9	35.5	0.00	0.00	
3,200.0	0.70	172.12	3,199.8	-36.4	5.0	36.8	0.00	0.00	
3,300.0	0.70	172.12	3,299.8	-37.6	5.2	38.0	0.00	0.00	
3,400.0	0.70	172.12	3,399.8	-38.9	5.4	39.2	0.00	0.00	
3,500.0	0.70	172.12	3,499.8	-40.1	5.5	40.5	0.00	0.00	
3,600.0	0.70	172.12	3,599.7	-41.3	5.7	41.7	0.00	0.00	
3,700.0	0.70	172.12	3,699.7	-42.5	5.9	42.9	0.00	0.00	
3,800.0	0.70	172.12	3,799.7	-43.7	6.1	44.1	0.00	0.00	
3,900.0	0.70	172.12	3,899.7	-44.9	6.2	45.4	0.00	0.00	
4,000.0	0.70	172.12	3,999.7	-46.2	6.4	46.6	0.00	0.00	
4,100.0	0.70	172.12	4,099.7	-47.4	6.6	47.8	0.00	0.00	
4,200.0	0.70	172.12	4,199.7	-48.6	6.7	49.1	0.00	0.00	
4,300.0	0.70	172.12	4,299.7	-49.8	6.9	50.3	0.00	0.00	
4,400.0	0.70	172.12	4,399.7	-51.0	7.1	51.5	0.00	0.00	
4,500.0	0.70	172.12	4,499.7	-52.3	7.2	52.8	0.00	0.00	
4,600.0	0.70	172.12	4,599.7	-53.5	7.4	54.0	0.00	0.00	
4,700.0	0.70	172.12	4,699.7	-54.7	7.6	55.2	0.00	0.00	
4,800.0	0.70	172.12	4,799.7	-55.9	7.7	56.4	0.00	0.00	
4,900.0	0.70	172.12	4,899.6	-57.1	7.9	57.7	0.00	0.00	

Planning Report

Database:	US EDM 2003.21 Multi User Db	Local Co-ordinate Reference:	Well 8506D-25 F25 496
Company:	EnCana Oil & Gas (USA) Inc	TVD Reference:	KBE @ 8320.0ft (Original Well Elev)
Project:	Story Gulch	MD Reference:	KBE @ 8320.0ft (Original Well Elev)
Site:	F25 496	North Reference:	True
Well:	8506D-25 F25 496	Survey Calculation Method:	Minimum Curvature
Wellbore:	DD		
Design:	Plan #1		

Planned Survey									
Measured Depth (ft)	Inclination (°)	Azimuth (°)	Vertical Depth (ft)	+N/-S (ft)	+E/-W (ft)	Vertical Section (ft)	Dogleg Rate (°/100ft)	Build Rate (°/100ft)	Comments / Formations
5,000.0	0.70	172.12	4,999.6	-58.3	8.1	58.9	0.00	0.00	
5,100.0	0.70	172.12	5,099.6	-59.6	8.2	60.1	0.00	0.00	
5,200.0	0.70	172.12	5,199.6	-60.8	8.4	61.4	0.00	0.00	
5,300.0	0.70	172.12	5,299.6	-62.0	8.6	62.6	0.00	0.00	
5,340.4	0.70	172.12	5,340.0	-62.5	8.7	63.1	0.00	0.00	Was G
5,400.0	0.70	172.12	5,399.6	-63.2	8.8	63.8	0.00	0.00	
5,500.0	0.70	172.12	5,499.6	-64.4	8.9	65.1	0.00	0.00	
5,600.0	0.70	172.12	5,599.6	-65.7	9.1	66.3	0.00	0.00	
5,700.0	0.70	172.12	5,699.6	-66.9	9.3	67.5	0.00	0.00	
5,800.0	0.70	172.12	5,799.6	-68.1	9.4	68.7	0.00	0.00	
5,900.0	0.70	172.12	5,899.6	-69.3	9.6	70.0	0.00	0.00	
6,000.0	0.70	172.12	5,999.6	-70.5	9.8	71.2	0.00	0.00	
6,100.0	0.70	172.12	6,099.6	-71.8	9.9	72.4	0.00	0.00	
6,200.0	0.70	172.12	6,199.5	-73.0	10.1	73.7	0.00	0.00	
6,300.0	0.70	172.12	6,299.5	-74.2	10.3	74.9	0.00	0.00	
6,400.0	0.70	172.12	6,399.5	-75.4	10.4	76.1	0.00	0.00	
6,500.0	0.70	172.12	6,499.5	-76.6	10.6	77.4	0.00	0.00	
6,600.0	0.70	172.12	6,599.5	-77.8	10.8	78.6	0.00	0.00	
6,700.0	0.70	172.12	6,699.5	-79.1	10.9	79.8	0.00	0.00	
6,800.0	0.70	172.12	6,799.5	-80.3	11.1	81.0	0.00	0.00	
6,900.0	0.70	172.12	6,899.5	-81.5	11.3	82.3	0.00	0.00	
7,000.0	0.70	172.12	6,999.5	-82.7	11.5	83.5	0.00	0.00	
7,100.0	0.70	172.12	7,099.5	-83.9	11.6	84.7	0.00	0.00	
7,200.0	0.70	172.12	7,199.5	-85.2	11.8	86.0	0.00	0.00	
7,300.0	0.70	172.12	7,299.5	-86.4	12.0	87.2	0.00	0.00	
7,400.0	0.70	172.12	7,399.5	-87.6	12.1	88.4	0.00	0.00	
7,500.0	0.70	172.12	7,499.4	-88.8	12.3	89.7	0.00	0.00	
7,600.0	0.70	172.12	7,599.4	-90.0	12.5	90.9	0.00	0.00	
7,700.0	0.70	172.12	7,699.4	-91.2	12.6	92.1	0.00	0.00	
7,800.0	0.70	172.12	7,799.4	-92.5	12.8	93.4	0.00	0.00	
7,900.0	0.70	172.12	7,899.4	-93.7	13.0	94.6	0.00	0.00	
8,000.0	0.70	172.12	7,999.4	-94.9	13.1	95.8	0.00	0.00	
8,100.0	0.70	172.12	8,099.4	-96.1	13.3	97.0	0.00	0.00	
8,200.0	0.70	172.12	8,199.4	-97.3	13.5	98.3	0.00	0.00	
8,300.0	0.70	172.12	8,299.4	-98.6	13.6	99.5	0.00	0.00	
8,400.0	0.70	172.12	8,399.4	-99.8	13.8	100.7	0.00	0.00	
8,440.6	0.70	172.12	8,440.0	-100.3	13.9	101.2	0.00	0.00	Williams Fork
8,457.1	0.70	172.12	8,456.5	-100.5	13.9	101.4	0.00	0.00	Start Drop -3.00
8,480.6	0.00	0.00	8,480.0	-100.6	13.9	101.6	3.00	-3.00	EOD at Inc. = 0° - Top of Gas - 8506D-25 F25 4
8,500.0	0.00	0.00	8,499.4	-100.6	13.9	101.6	0.00	0.00	
8,600.0	0.00	0.00	8,599.4	-100.6	13.9	101.6	0.00	0.00	
8,700.0	0.00	0.00	8,699.4	-100.6	13.9	101.6	0.00	0.00	
8,800.0	0.00	0.00	8,799.4	-100.6	13.9	101.6	0.00	0.00	
8,900.0	0.00	0.00	8,899.4	-100.6	13.9	101.6	0.00	0.00	
9,000.0	0.00	0.00	8,999.4	-100.6	13.9	101.6	0.00	0.00	
9,100.0	0.00	0.00	9,099.4	-100.6	13.9	101.6	0.00	0.00	
9,140.6	0.00	0.00	9,140.0	-100.6	13.9	101.6	0.00	0.00	Price GR
9,200.0	0.00	0.00	9,199.4	-100.6	13.9	101.6	0.00	0.00	
9,300.0	0.00	0.00	9,299.4	-100.6	13.9	101.6	0.00	0.00	
9,400.0	0.00	0.00	9,399.4	-100.6	13.9	101.6	0.00	0.00	
9,500.0	0.00	0.00	9,499.4	-100.6	13.9	101.6	0.00	0.00	
9,600.0	0.00	0.00	9,599.4	-100.6	13.9	101.6	0.00	0.00	

Planning Report

Database:	US EDM 2003.21 Multi User Db	Local Co-ordinate Reference:	Well 8506D-25 F25 496
Company:	EnCana Oil & Gas (USA) Inc	TVD Reference:	KBE @ 8320.0ft (Original Well Elev)
Project:	Story Gulch	MD Reference:	KBE @ 8320.0ft (Original Well Elev)
Site:	F25 496	North Reference:	True
Well:	8506D-25 F25 496	Survey Calculation Method:	Minimum Curvature
Wellbore:	DD		
Design:	Plan #1		

Planned Survey									
Measured Depth (ft)	Inclination (°)	Azimuth (°)	Vertical Depth (ft)	+N/-S (ft)	+E/-W (ft)	Vertical Section (ft)	Dogleg Rate (°/100ft)	Build Rate (°/100ft)	Comments / Formations
9,700.0	0.00	0.00	9,699.4	-100.6	13.9	101.6	0.00	0.00	
9,800.0	0.00	0.00	9,799.4	-100.6	13.9	101.6	0.00	0.00	
9,900.0	0.00	0.00	9,899.4	-100.6	13.9	101.6	0.00	0.00	
10,000.0	0.00	0.00	9,999.4	-100.6	13.9	101.6	0.00	0.00	
10,100.0	0.00	0.00	10,099.4	-100.6	13.9	101.6	0.00	0.00	
10,200.0	0.00	0.00	10,199.4	-100.6	13.9	101.6	0.00	0.00	
10,300.0	0.00	0.00	10,299.4	-100.6	13.9	101.6	0.00	0.00	
10,400.0	0.00	0.00	10,399.4	-100.6	13.9	101.6	0.00	0.00	
10,500.0	0.00	0.00	10,499.4	-100.6	13.9	101.6	0.00	0.00	
10,600.0	0.00	0.00	10,599.4	-100.6	13.9	101.6	0.00	0.00	
10,700.0	0.00	0.00	10,699.4	-100.6	13.9	101.6	0.00	0.00	
10,800.0	0.00	0.00	10,799.4	-100.6	13.9	101.6	0.00	0.00	
10,900.0	0.00	0.00	10,899.4	-100.6	13.9	101.6	0.00	0.00	
11,000.0	0.00	0.00	10,999.4	-100.6	13.9	101.6	0.00	0.00	
11,100.0	0.00	0.00	11,099.4	-100.6	13.9	101.6	0.00	0.00	
11,200.0	0.00	0.00	11,199.4	-100.6	13.9	101.6	0.00	0.00	
11,300.0	0.00	0.00	11,299.4	-100.6	13.9	101.6	0.00	0.00	
11,400.0	0.00	0.00	11,399.4	-100.6	13.9	101.6	0.00	0.00	
11,500.0	0.00	0.00	11,499.4	-100.6	13.9	101.6	0.00	0.00	
11,540.6	0.00	0.00	11,540.0	-100.6	13.9	101.6	0.00	0.00	Paludal
11,600.0	0.00	0.00	11,599.4	-100.6	13.9	101.6	0.00	0.00	
11,700.0	0.00	0.00	11,699.4	-100.6	13.9	101.6	0.00	0.00	
11,800.0	0.00	0.00	11,799.4	-100.6	13.9	101.6	0.00	0.00	
11,900.0	0.00	0.00	11,899.4	-100.6	13.9	101.6	0.00	0.00	
12,000.0	0.00	0.00	11,999.4	-100.6	13.9	101.6	0.00	0.00	
12,100.0	0.00	0.00	12,099.4	-100.6	13.9	101.6	0.00	0.00	
12,140.6	0.00	0.00	12,140.0	-100.6	13.9	101.6	0.00	0.00	Rollins - 8506D-25 F25 496 BHL
12,200.0	0.00	0.00	12,199.4	-100.6	13.9	101.6	0.00	0.00	
12,300.0	0.00	0.00	12,299.4	-100.6	13.9	101.6	0.00	0.00	
12,400.0	0.00	0.00	12,399.4	-100.6	13.9	101.6	0.00	0.00	
12,470.6	0.00	0.00	12,470.0	-100.6	13.9	101.6	0.00	0.00	Cozzette
12,500.0	0.00	0.00	12,499.4	-100.6	13.9	101.6	0.00	0.00	
12,600.0	0.00	0.00	12,599.4	-100.6	13.9	101.6	0.00	0.00	
12,660.6	0.00	0.00	12,660.0	-100.6	13.9	101.6	0.00	0.00	Corcoran
12,700.0	0.00	0.00	12,699.4	-100.6	13.9	101.6	0.00	0.00	
12,800.0	0.00	0.00	12,799.4	-100.6	13.9	101.6	0.00	0.00	
12,900.0	0.00	0.00	12,899.4	-100.6	13.9	101.6	0.00	0.00	
12,940.6	0.00	0.00	12,940.0	-100.6	13.9	101.6	0.00	0.00	Sego
13,000.0	0.00	0.00	12,999.4	-100.6	13.9	101.6	0.00	0.00	
13,100.0	0.00	0.00	13,099.4	-100.6	13.9	101.6	0.00	0.00	
13,140.6	0.00	0.00	13,140.0	-100.6	13.9	101.6	0.00	0.00	L Sego
13,200.0	0.00	0.00	13,199.4	-100.6	13.9	101.6	0.00	0.00	
13,300.0	0.00	0.00	13,299.4	-100.6	13.9	101.6	0.00	0.00	
13,390.6	0.00	0.00	13,390.0	-100.6	13.9	101.6	0.00	0.00	TD at 13,390.6' MD
13,400.0	0.00	0.00	13,399.4	-100.6	13.9	101.6	0.00	0.00	
13,500.0	0.00	0.00	13,499.4	-100.6	13.9	101.6	0.00	0.00	
13,600.0	0.00	0.00	13,599.4	-100.6	13.9	101.6	0.00	0.00	
13,640.6	0.00	0.00	13,640.0	-100.6	13.9	101.6	0.00	0.00	Permit TD at 13,640.6' MD

Planning Report

Database:	US EDM 2003.21 Multi User Db	Local Co-ordinate Reference:	Well 8506D-25 F25 496
Company:	EnCana Oil & Gas (USA) Inc	TVD Reference:	KBE @ 8320.0ft (Original Well Elev)
Project:	Story Gulch	MD Reference:	KBE @ 8320.0ft (Original Well Elev)
Site:	F25 496	North Reference:	True
Well:	8506D-25 F25 496	Survey Calculation Method:	Minimum Curvature
Wellbore:	DD		
Design:	Plan #1		

Targets									
Target Name	Dip Angle	Dip Dir.	TVD	+N/-S	+E/-W	Northing	Easting	Latitude	Longitude
- hit/miss target	(°)	(°)	(ft)	(ft)	(ft)	(ft)	(ft)		
- Shape									
8506D-25 F25 496 TGT - plan hits target center - Point	0.00	0.00	8,480.0	-100.6	13.9	1,680,997.58	2,262,671.75	39° 40' 26.19 N	108° 7' 11.22 W
8506D-25 F25 496 BHL - plan hits target center - Rectangle (sides W30.0 H50.0 D0.0)	0.00	0.00	12,140.0	-100.6	13.9	1,680,997.58	2,262,671.75	39° 40' 26.19 N	108° 7' 11.22 W

Formations						
Measured Depth	Vertical Depth	Name	Lithology	Dip	Dip Direction	
(ft)	(ft)			(°)	(°)	
1,740.1	1,740.0	Mahog Bench		0.00		
5,340.4	5,340.0	Was G		0.00		
8,440.6	8,440.0	Williams Fork		0.00		
8,480.6	8,480.0	Top of Gas		0.00		
9,140.6	9,140.0	Price GR		0.00		
11,540.6	11,540.0	Paludal		0.00		
12,140.6	12,140.0	Rollins		0.00		
12,470.6	12,470.0	Cozzette		0.00		
12,660.6	12,660.0	Corcoran		0.00		
12,940.6	12,940.0	Sego		0.00		
13,140.6	13,140.0	L Sego		0.00		

Plan Annotations					
Measured Depth	Vertical Depth	Local Coordinates		Comment	
(ft)	(ft)	+N/-S	+E/-W		
		(ft)	(ft)		
200.0	200.0	0.0	0.0	KOP = 200'	
223.5	223.5	-0.1	0.0	EOB at Inc. = .70°	
8,457.1	8,456.5	-100.5	13.9	Start Drop -3.00	
8,480.6	8,480.0	-100.6	13.9	EOD at Inc. = 0°	
13,390.6	13,390.0	-100.6	13.9	TD at 13,390.6' MD	
13,640.6	13,640.0	-100.6	13.9	Permit TD at 13,640.6' MD	