

**EnCana OIL & GAS (USA) INC.**

Well location, STORY GULCH UNIT #8506D-25 F25 496, located as shown in the SE 1/4 NW 1/4 of Section 25, T4S, R96W, 6th P.M., Garfield County, Colorado.

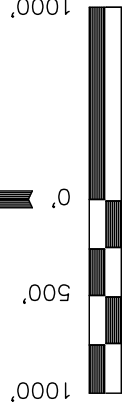
**BASIS OF ELEVATION**

BENCH MARK (H79) LOCATED IN THE NE 1/4 OF SECTION 25, T4S, R98W, 6th P.M. TAKEN FROM THE BULL FORK QUADRANGLE, COLORADO, 7.5 MINUTE SERIES (TOPOGRAPHICAL MAP) PUBLISHED BY THE UNITED STATES DEPARTMENT OF THE INTERIOR, GEOLOGICAL SURVEY. SAID ELEVATION IS MARKED AS BEING 8535 FEET.

**BASIS OF BEARINGS**

BASIS OF BEARINGS IS A G.P.S. OBSERVATION.

Sheet 1j of 11



S C A L E

**CERTIFICATE**

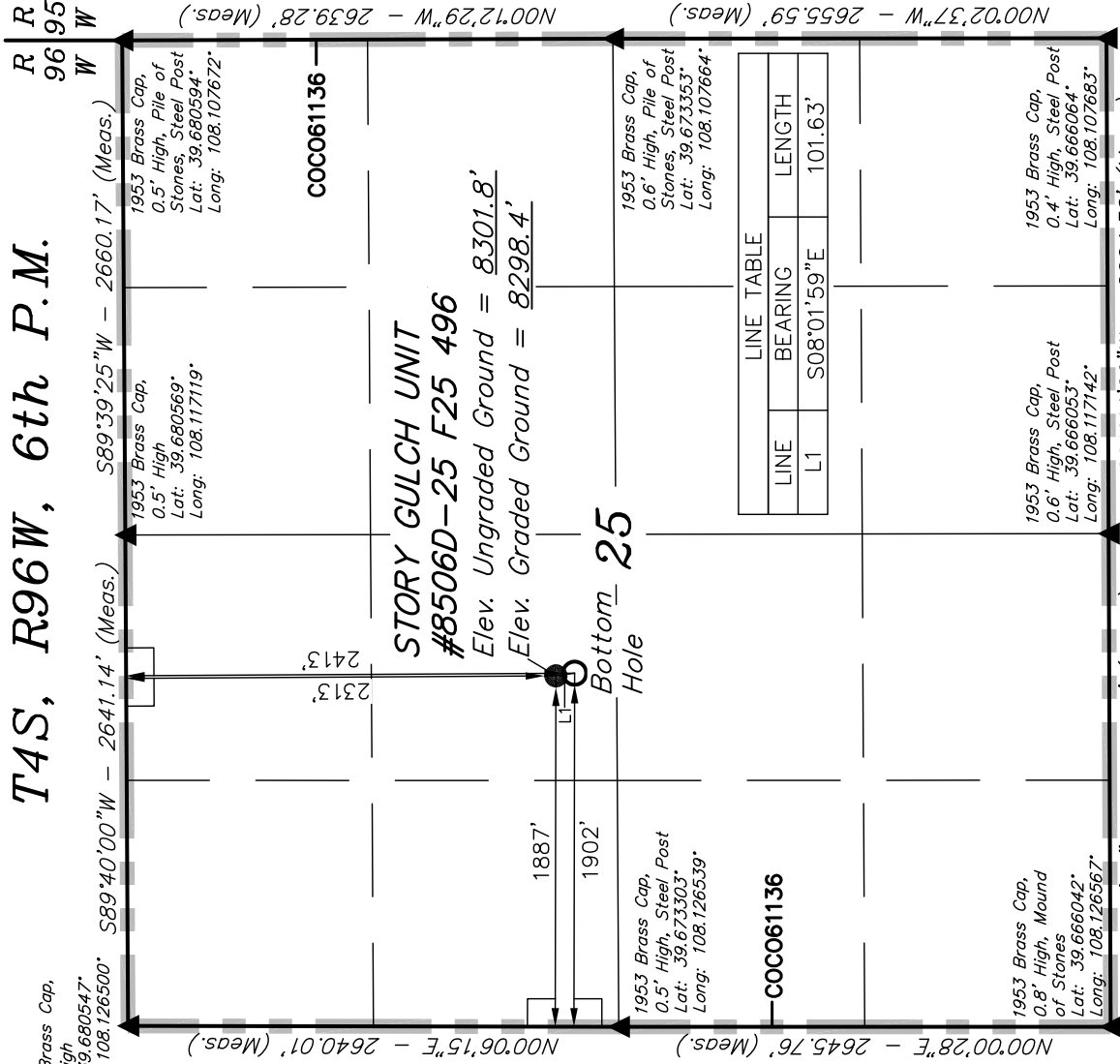
THIS IS TO CERTIFY THAT THE ABOVE PLAT WAS PREPARED FROM FIELD NOTES OF ACTUAL SURVEYS MADE BY ME OR UNDER MY SUPERVISION AND THAT THE SAME ARE TRUE AND CORRECT TO THE BEST OF MY KNOWLEDGE AND BELIEF.

*[Signature]*  
 REGISTERED LAND SURVEYOR  
 REGISTRATION NO. 17492  
 STATE OF COLORADO

**UINTAH ENGINEERING & LAND SURVEYING**

85 SOUTH 200 EAST - VERNAL, UTAH 84078  
 (435) 789-1017

SCALE	DATE SURVEYED:	DATE DRAWN:
1" = 1000'	08-07-09	08-27-09
PARTY	REFERENCES	
D.K. J.R. K.G.	G.L.O. PLAT	
WEATHER	FILE	
WARM		EnCana OIL & GAS (USA) INC.



PDOP = 2.0

NOTE:  
 SEE ADDENDUM TO LEGAL PLAT FOR EXISTING IMPROVEMENTS WITHIN 400' OF THE PROPOSED WELL HEAD.

**LEGEND:**

—	90° SYMBOL
●	PROPOSED WELL HEAD.
▲	SECTION CORNERS LOCATED

NAD 83 (TARGET BOTTOM HOLE)	NAD 83 (SURFACE LOCATION)
LATITUDE = 39°40'26.19" (39.673942)	LATITUDE = 39°40'27.18" (39.674217)
LONGITUDE = 108°07'11.22" (108.119785)	LONGITUDE = 108°07'11.40" (108.119835)
NAD 27 (TARGET BOTTOM HOLE)	NAD 27 (SURFACE LOCATION)
LATITUDE = 39°40'26.28" (39.673967)	LATITUDE = 39°40'27.27" (39.674242)
LONGITUDE = 108°07'08.93" (108.119147)	LONGITUDE = 108°07'09.11" (108.119197)