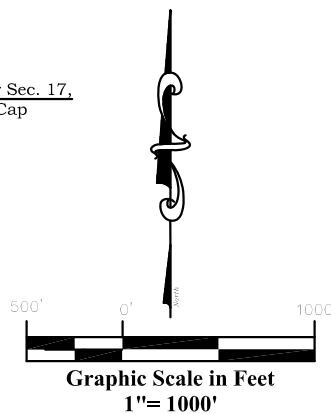
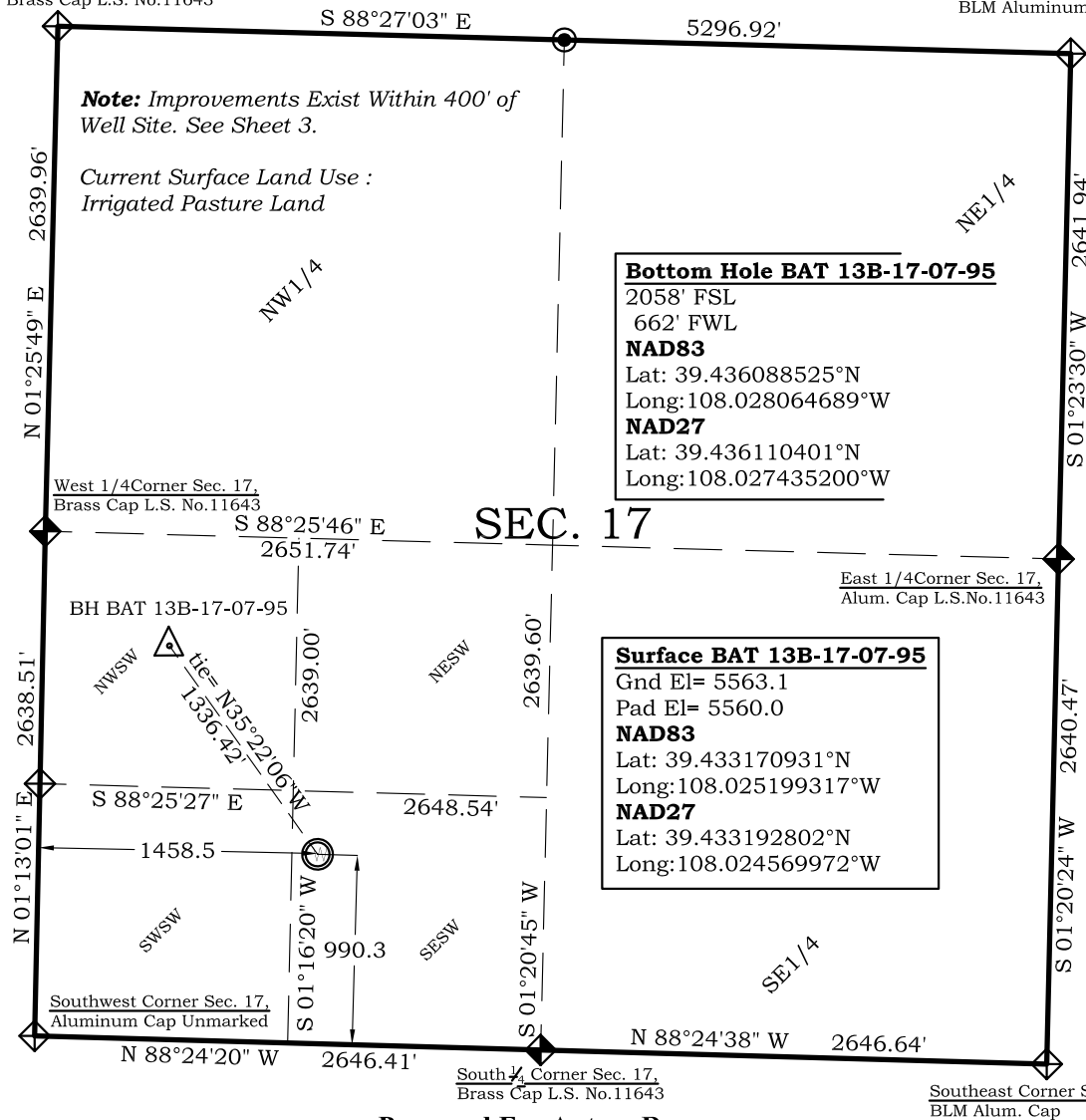


# Well Location Plat BAT 13B-17-07-95

Section 17, Township 7 South, Range 95 West

Northwest Corner Sec. 17,  
Brass Cap L.S. No.11643

Northeast Corner Sec. 17,  
BLM Aluminum Cap



## Legend

- Field Surveyed Section Corner
- Field Surveyed Quarter Corner
- Calculated Section Corner Location
- Field Surveyed 1/6 Corner

Prepared For Antero Resources

Proposed BAT 13B-17-07-95 Well Situate in The SE 1/4 SW 1/4  
Section 17, Township 7 South, Range 95 West of the 6 th.

Principal Meridian, County of Garfield, State of Colorado

## SURVEYOR'S CERTIFICATE

I, SCOTT E. AIBNER, A REGISTERED LAND SURVEYOR, LICENSED UNDER THE LAWS OF THE STATE OF COLORADO DO HEREBY CERTIFY THAT THE SURVEY SHOWN HEREON WAS PREPARED BY RIVER VALLEY SURVEY, INC., FOR ANTERO RESOURCES, BY ME OR UNDER MY DIRECT SUPERVISION AND THAT THIS PLAT IS A TRUE REPRESENTATION THEREOF.

BY:

SCOTT E. AIBNER, COLORADO REG. NO. 31143

## Notes:

- LATITUDE AND LONGITUDE COORDINATES ARE DIFFERENTIALLY CORRECTED AND BASED ON PUBLISHED NGS CONTROL STATION "KOEPSSELL". SYSTEM: UTM ZONE: 13 NORTH DATUM: NAD 1983 (CONUS)
- ELEVATIONS ARE BASED ON NAVD OF 1929.
- ALL BOTTOM AND TOP HOLE LOCATIONS ARE MEASURED 90 DEGREES FROM SECTION LINE.
- USGS QUADRANGLE MAP "GRAND VALLEY".
- CURRENT SURFACE LAND USE: IRRIGATED PASTURE LAND
- PDOP AT THE TIME OF LOCATION OF SURFACE WELL = 1.8



**River Valley Survey, Inc.**  
110 East 3rd. Street, Suite 213  
Rifle, Colorado 81650  
Ph: 970-379-7846

Project: WATSON RANCH PAD

Field Date: 06-19-09

Date: 11-12-09

Scale: 1"= 1000'

Sheet: 1 of 9

**Well Location Plat**  
**Prepared For Antero Resources**

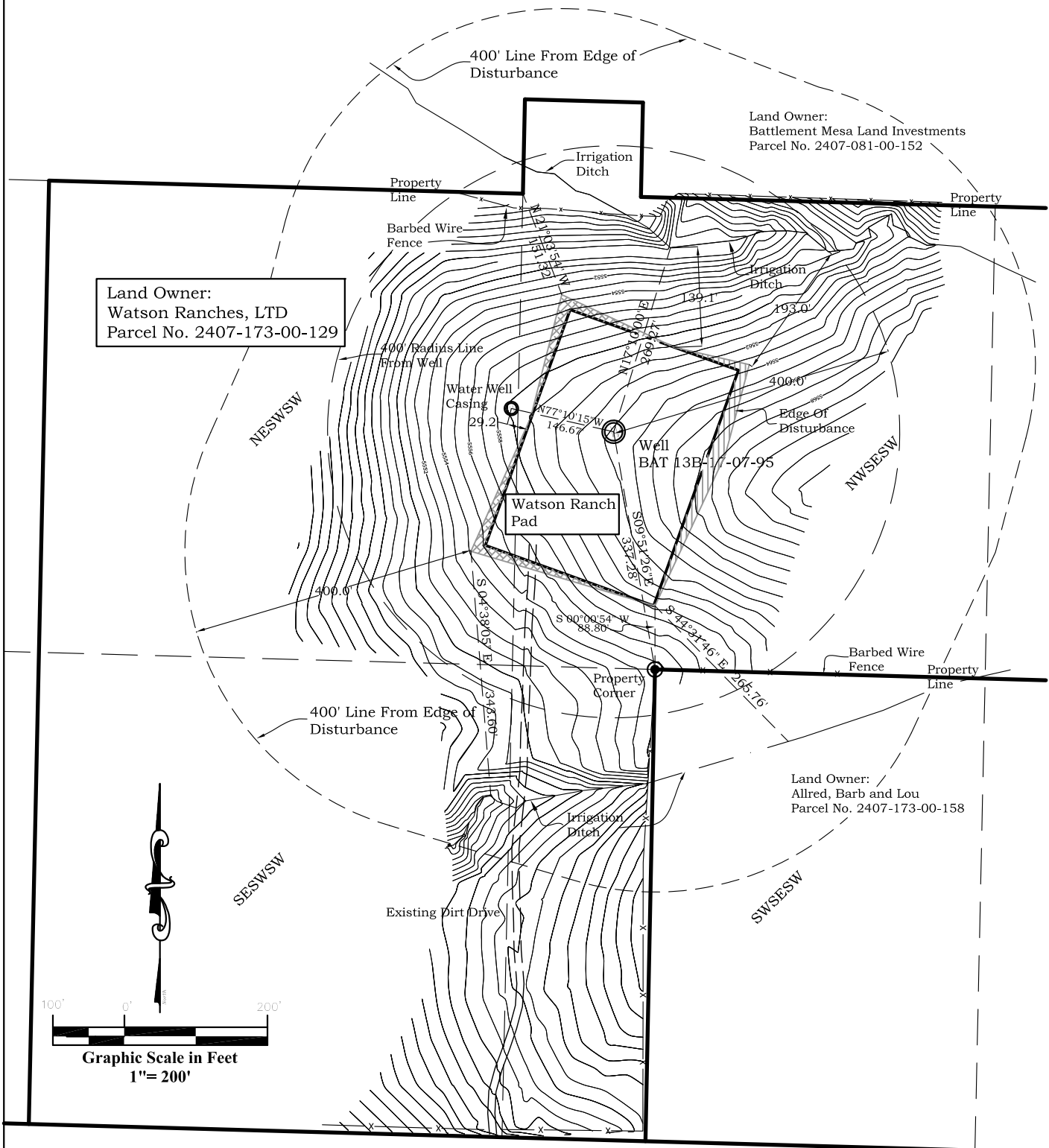
Situate In:  
SE 1/4 SW 1/4 Section 17, T7S., R. 95 W. of  
the 6th P.M., Garfield County, Colorado



# Location Drawing

## BAT 13B-17-07-95

### Section 17, Township 7 South, Range 95 West



**River Valley Survey, Inc.**  
110 East 3rd. Street, Suite 213  
Rifle, Colorado 81650  
Ph: 970-379-7846

**Project:** WATSON RANCH PAD

**Field Date:** 06-19-09

**Date:** 11-12-09

**Scale:** 1" = 200'

**Sheet:** 3 of 9

**Well Location Plat**  
**Prepared For Antero Resources**

**Situate In:**  
SE $\frac{1}{4}$ SW $\frac{1}{4}$  Section 17, T7S., R. 95 W. of  
the 6th P.M., Garfield County, Colorado

