

ENSIGN

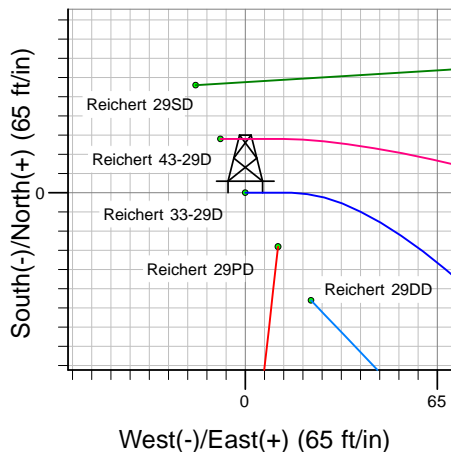
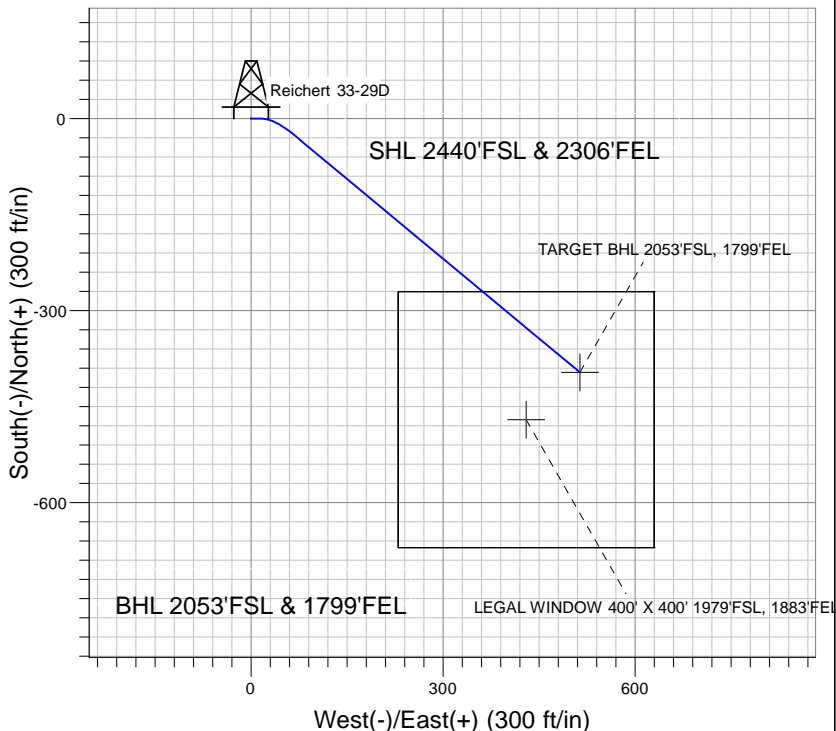
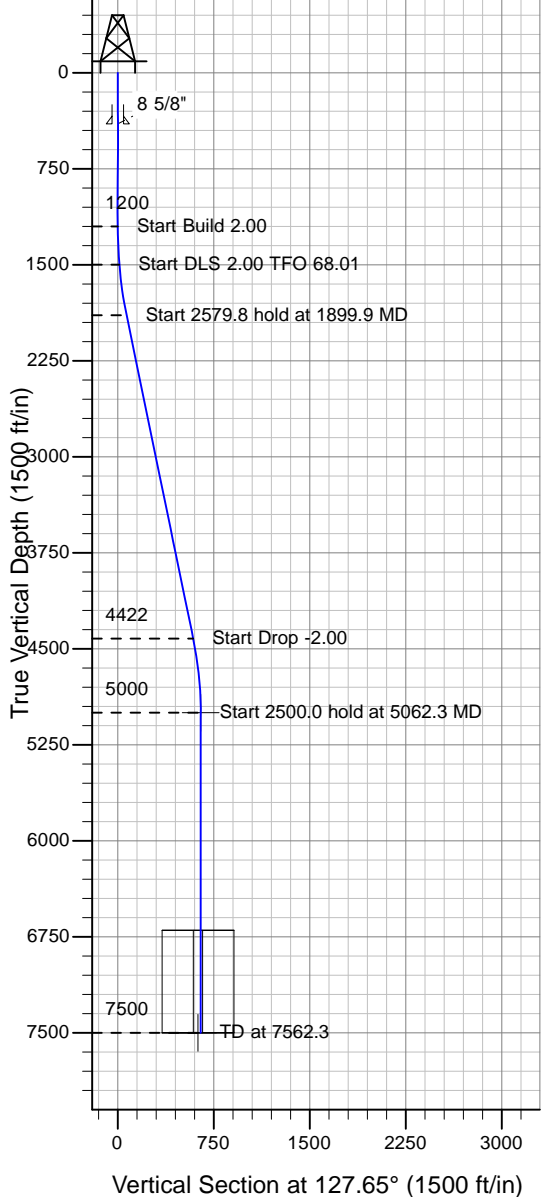
Directional

Well Name: Reichert 33-29D

Surface Location: Reichert Pad Sec.29-T4N-R67W
 North American Datum 1983 , US State Plane 1983 , Colorado Northern Zone
 Ground Elevation: 4970.0

+N/-S+E/-W Northing Easting Latitude Longitude Slot
 0.0 0.0 1346679.62 3163622.92 40° 17' 0.780 N 104° 54' 48.636 W
 Original Well Elev WELL @ 4983.0ft (Original Well Elev)

PETROLEUM DEVELOPMENT CORP Weld County CO



Reichert Pad Sec.29-T4N-R67W
 Reichert 33-29D
 Plan #2 (5-29-09)
 17:38, May 29 2009



Azimuths to True North
 Magnetic North: 9.18°
 Magnetic Field
 Strength: 53291.5snT
 Dip Angle: 67.01°
 Date: 5/12/2009
 Model: IGRF200510

WELLBORE TARGET DETAILS (LAT/LONG)

Name	TVD	+N/-S	+E/-W	Latitude	Longitude	Shape
TARGET BHL 2053'FSL, 1799'FEL	5000.0	-396.4	513.9	40° 16' 56.862 N	104° 54' 42.006 W	Point
LEGAL WINDOW 400' X 400' 1979'FSL, 1883'FEL	7500.0	-470.4	429.9	40° 16' 56.131 N	104° 54' 43.089 W	Rectangle (Sides: L400.0 W400.0)

SECTION DETAILS

Sec	MD	Inc	Azi	TVD	+N/-S	+E/-W	DLeg	TFace	VSec	Target
1	0.0	0.00	0.00	0.0	0.0	0.0	0.00	0.00	0.0	
2	1200.0	0.00	0.00	1200.0	0.0	0.0	0.00	0.00	0.0	
3	1500.0	6.00	90.00	1499.5	0.0	15.7	2.00	90.00	12.4	
4	1899.9	11.65	129.72	1894.8	-25.8	67.7	2.00	68.01	69.4	
5	4479.8	11.65	129.72	4421.5	-358.7	468.5	0.00	0.00	590.0	
6	5062.3	0.00	0.00	5000.0	-396.4	513.9	2.00	180.00	649.0	TARGET BHL 2053'FSL, 1799'FEL
7	7562.3	0.00	0.00	7500.0	-396.4	513.9	0.00	0.00	649.0	