

# WELL LOCATION CERTIFICATE

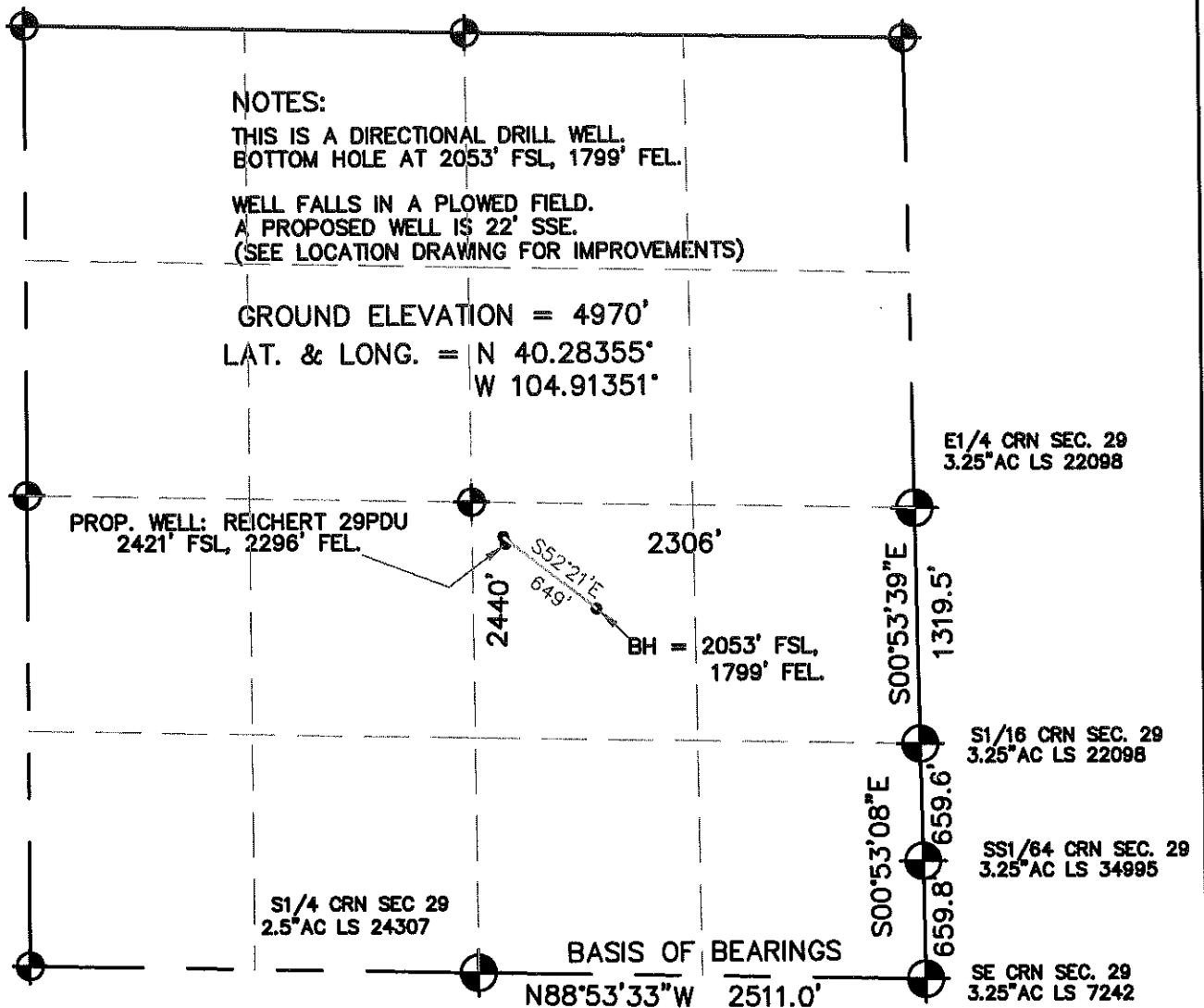
SECTION 29, TOWNSHIP 4 NORTH, RANGE 67 WEST, 6TH P.M.

## NOTES:

THIS IS A DIRECTIONAL DRILL WELL.  
BOTTOM HOLE AT 2053' FSL, 1799' FEL.

WELL FALLS IN A PLOWED FIELD.  
A PROPOSED WELL IS 22' SSE.  
(SEE LOCATION DRAWING FOR IMPROVEMENTS)

GROUND ELEVATION = 4970'  
LAT. & LONG. = N 40.28355°  
W 104.91351°

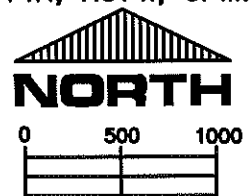


I HEREBY STATE TO UNIOIL THAT THIS WELL LOCATION CERTIFICATE FOR  
THE WELL REICHERT 33-29DU IS LOCATED 2440' FSL & 2306' FEL, SEC. 29, T4N, R67W, 6PM.



## LEGEND

- FOUND MONUMENT
- PROPOSED WELL
- IMPROVEMENTS (AS LABELED)



SCALE 1" = 1000'

ELEVATION SOURCE = USGS 7.5' QUAD.MAP CONTOURS  
NGVD 1929 DATUM.

LAT. & LONG. ARE DIFFERENTIALLY CORRECTED (NAD'83)  
USING (DGPS) WITH (PDOP) VALUES LESS THAN SIX (6).

SHOWN DISTANCES ARE FIELD MEASURED - EXTERIOR SECTION LINES  
ARE DRAWN TO SCALE (BEST APPROX. OR FOUND MONUMENT).

THOMAS G. CARLSON, PLS 24657  
HORSESHOE SURVEYING, LLC

THIS IS NOT A MONUMENTED BOUNDARY SURVEY, IT IS ONLY A  
DRAWING INTENDED TO DEPICT THE WELL LOCATION TO SECTION LINES.

DISTANCES TO WELL SHOWN PERPENDICULAR  
TO SECTION LINES.

PREPARED BY:	HORSESHOE SURVEYING, LLC PO BOX 150458 LAKEWOOD, CO 80215 (720)872-0196	WELL NAME:	REICHERT 33-29DU	
DRAWING DATE: 7-21-09		LOCATION:	WELD COUNTY, CO SE1/4, SEC. 29, T4N, R67W, 6TH P.M.	
FIELD DATE: 5-5-09	BY: TGC	CHKD:	JOB NO.	SHEET NO. 1 OF 1