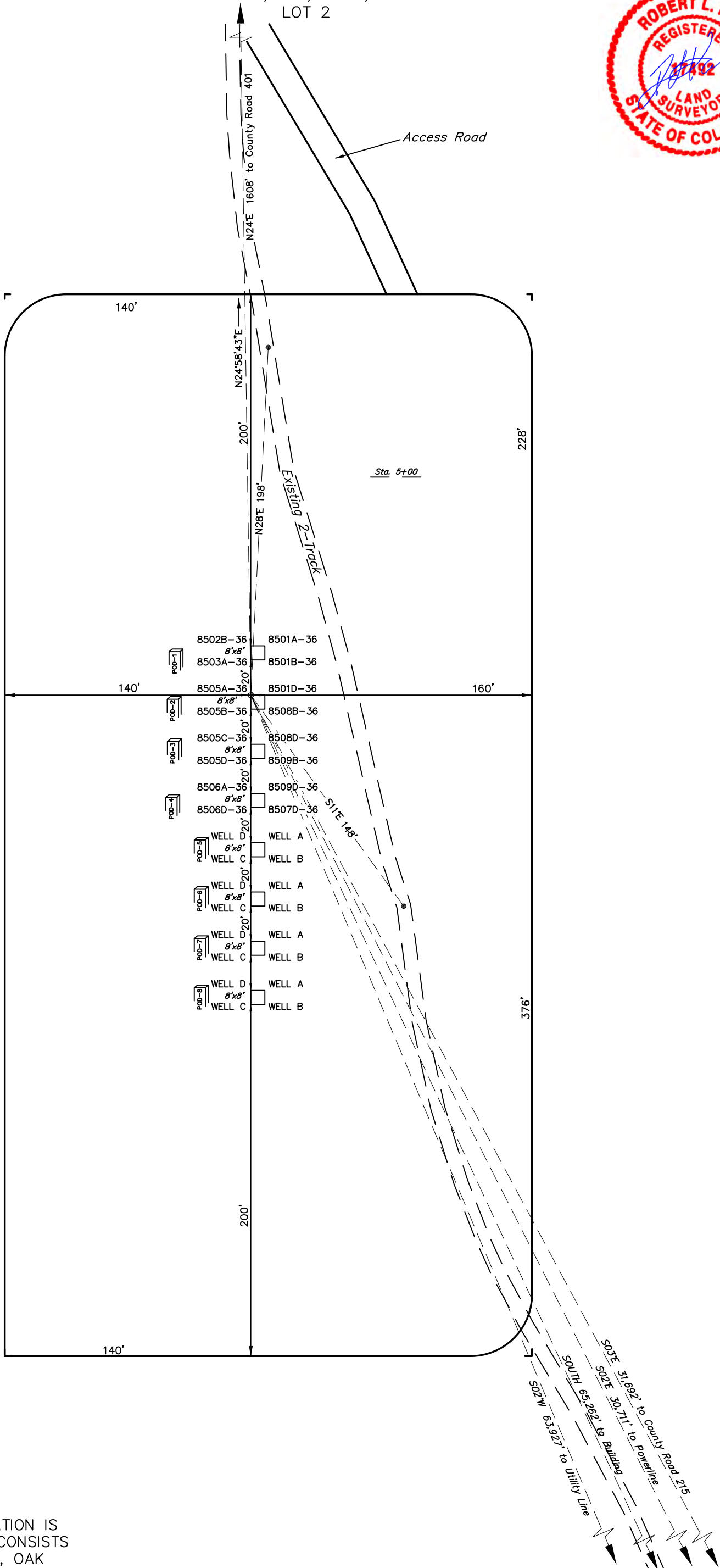


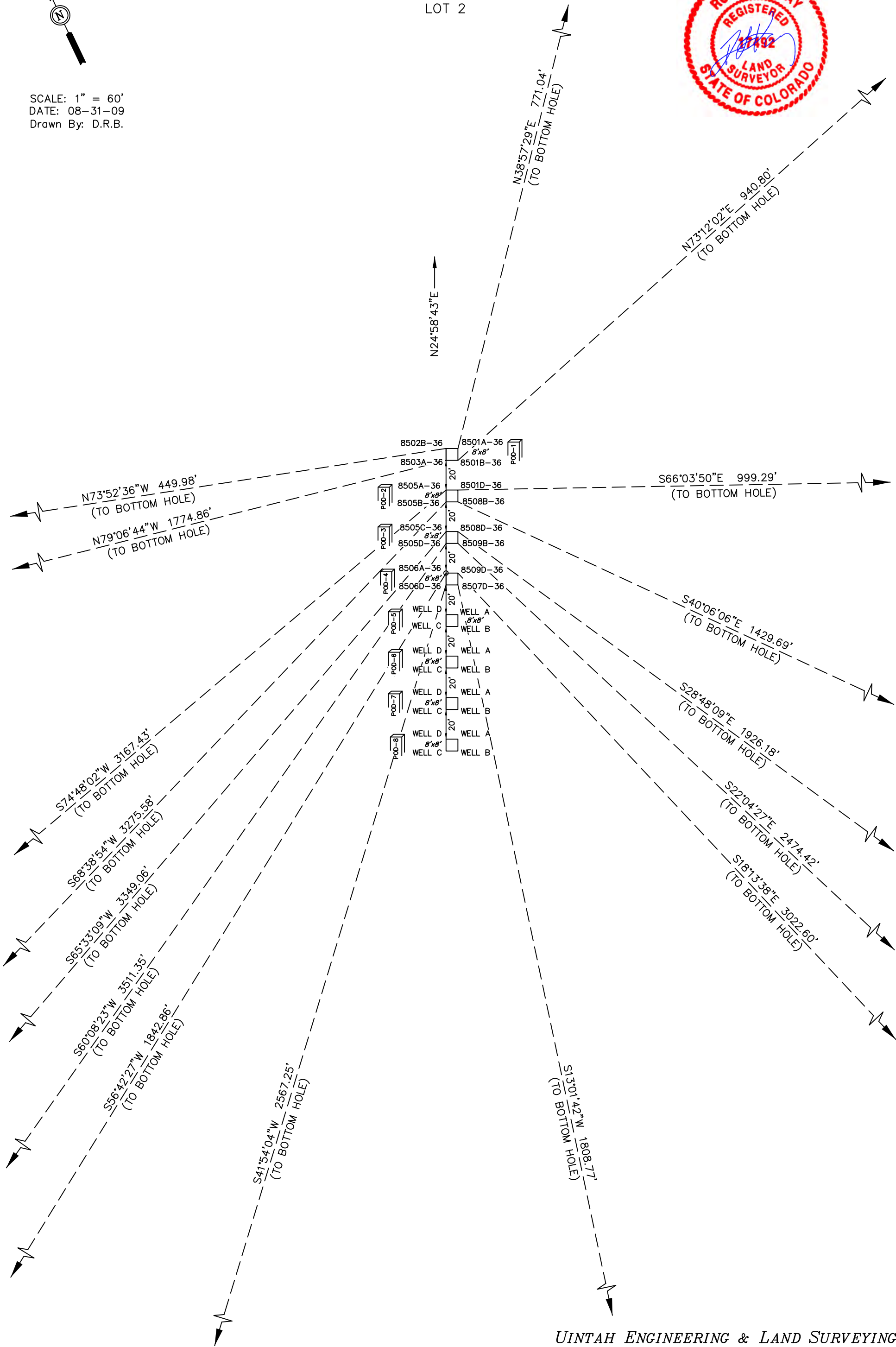
SCALE: 1" = 60'
DATE: 08-03-09
Drawn By: D.R.B.

Rev: 08-17-09 D.R.B.
Rev: 08-31-09 D.R.B.
Rev: 09-21-09 D.R.B.



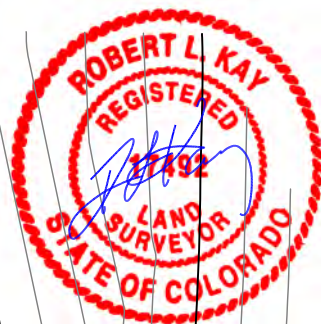


SCALE: 1" = 60'
DATE: 08-31-09
Drawn By: D.R.B.



LOCATION LAYOUT FOR

WELL PAD B36 496
SECTION 36, T4S, R96W, 6th P.M.
LOT 2



SCALE: 1" = 60'

DATE: 08-03-09

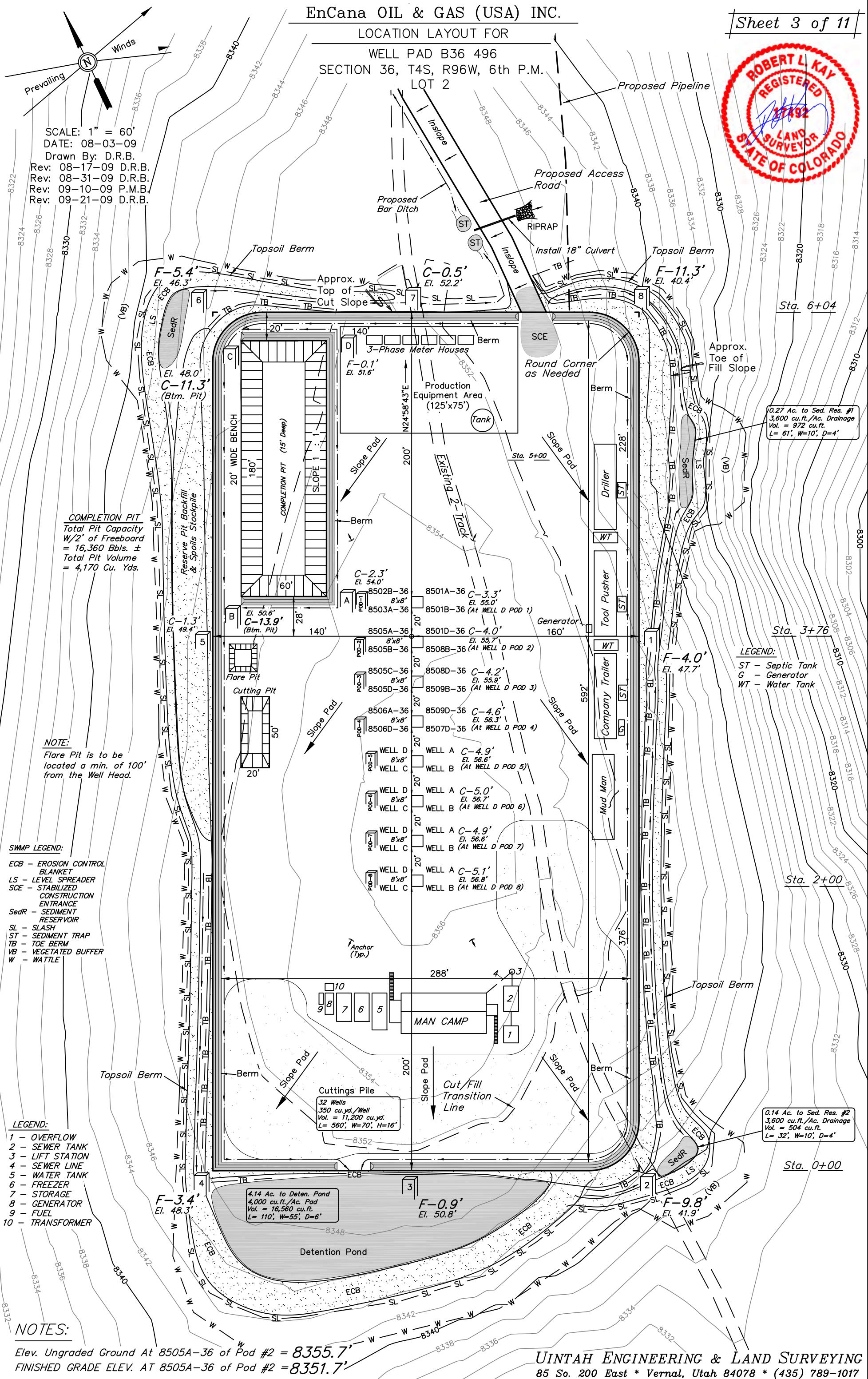
Drawn By: D.R.B.

Rev: 08-17-09 D.R.B.

Rev: 08-31-09 D.R.B.

Rev: 09-10-09 P.M.B.

Rev: 09-21-09 D.R.B.



COMPLETION PIT
Total Pit Capacity
W/2' of Freeboard
= 16,360 Bbls. ±
Total Pit Volume
= 4,170 Cu. Yds.

NOTE:

Flare Pit is to be
located a min. of 100'
from the Well Head.

SWMP LEGEND:

ECB - EROSION CONTROL
BLANKET
LS - LEVEL SPREADER
SCE - STABILIZED
CONSTRUCTION
ENTRANCE
SedR - SEDIMENT
RESERVOIR
SL - SLASH
ST - SEDIMENT TRAP
TB - TOE BERM
VB - VEGETATED BUFFER
W - WATTLE

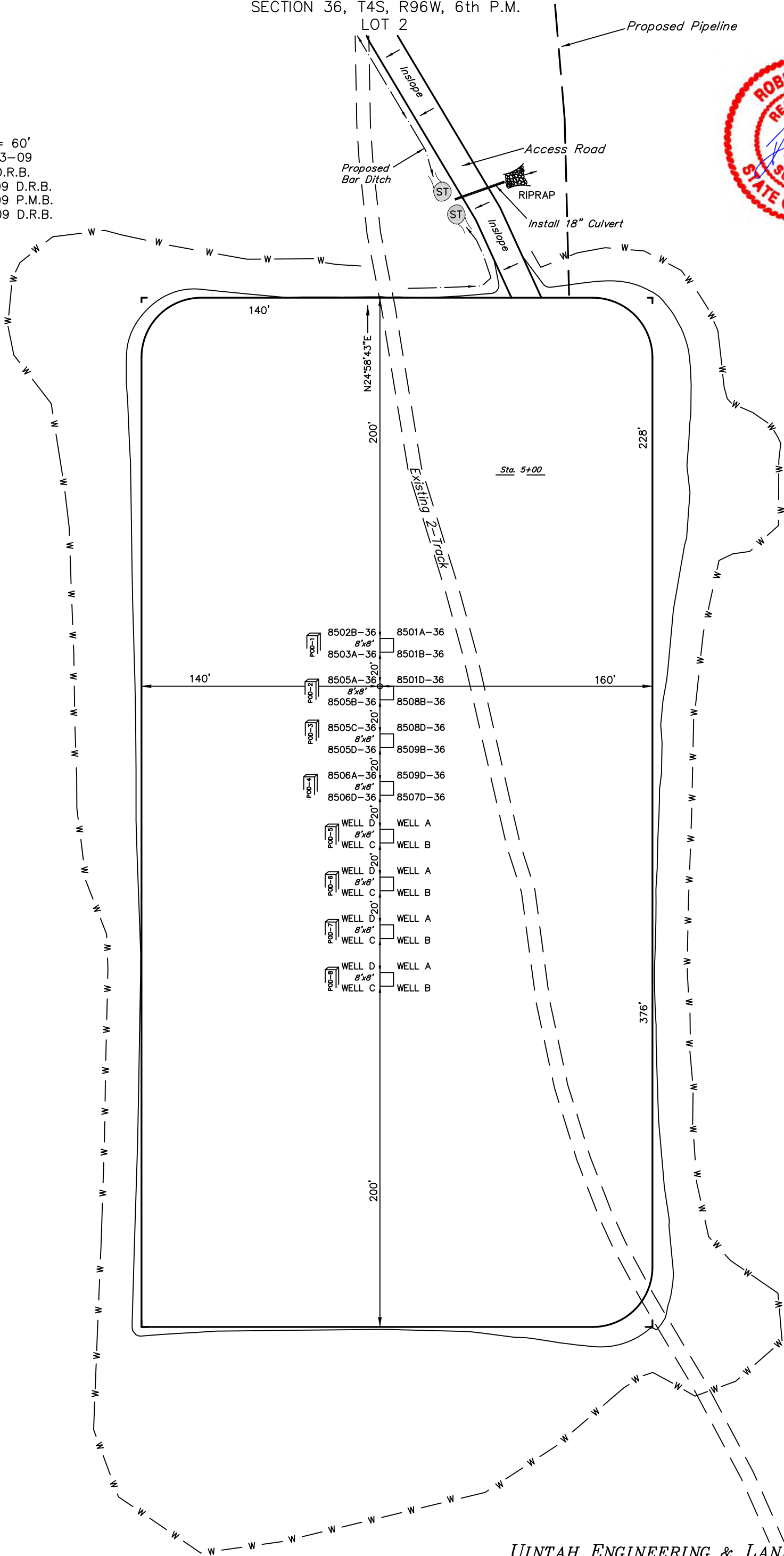
LEGEND:

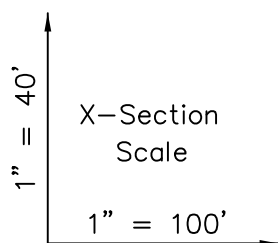
1 - OVERFLOW
2 - SEWER TANK
3 - LIFT STATION
4 - SEWER LINE
5 - WATER TANK
6 - FREEZER
7 - STORAGE
8 - GENERATOR
9 - FUEL
10 - TRANSFORMER

NOTES:

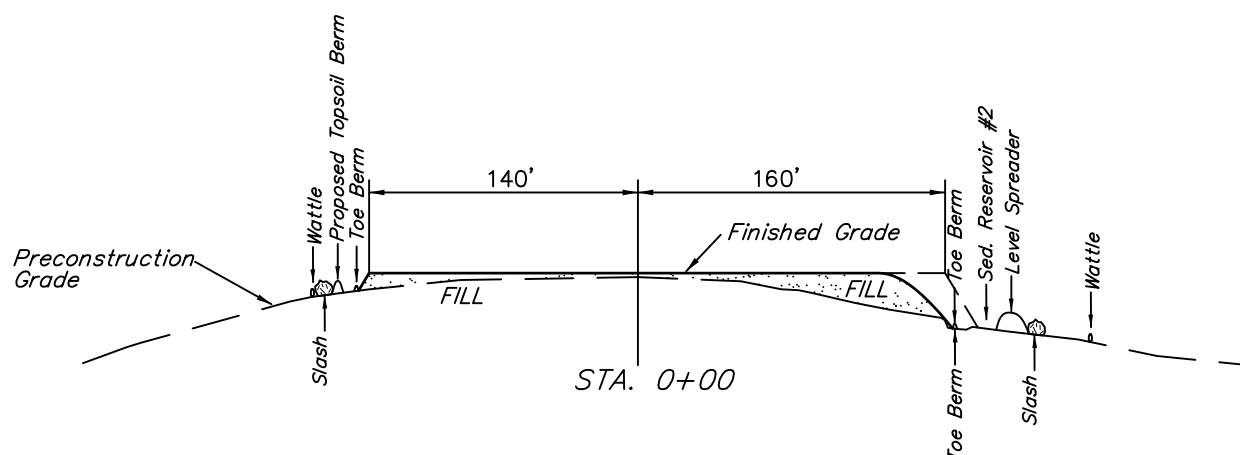
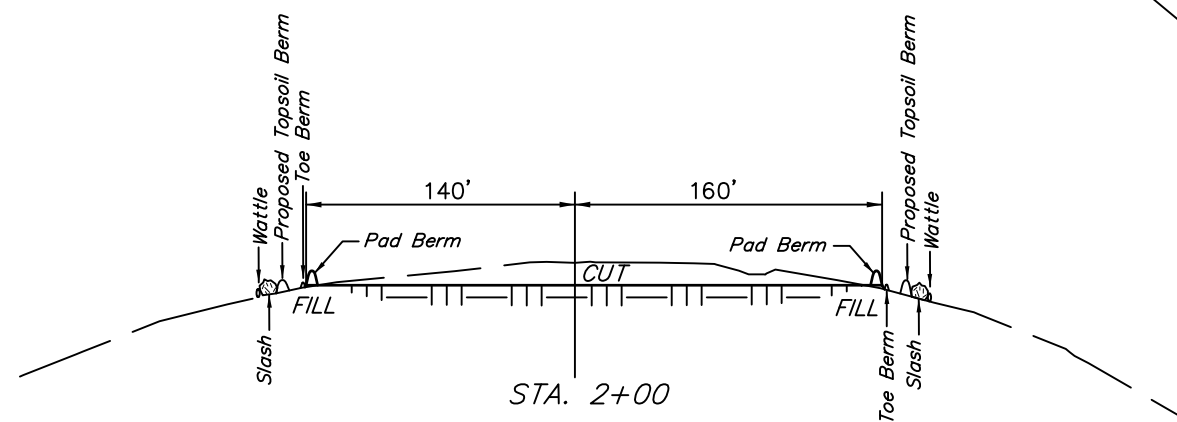
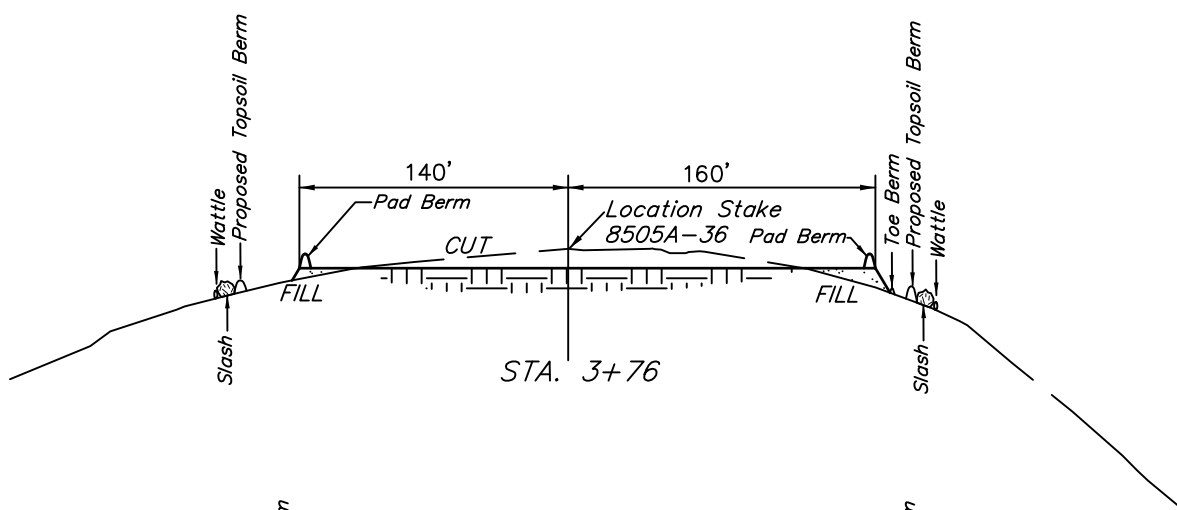
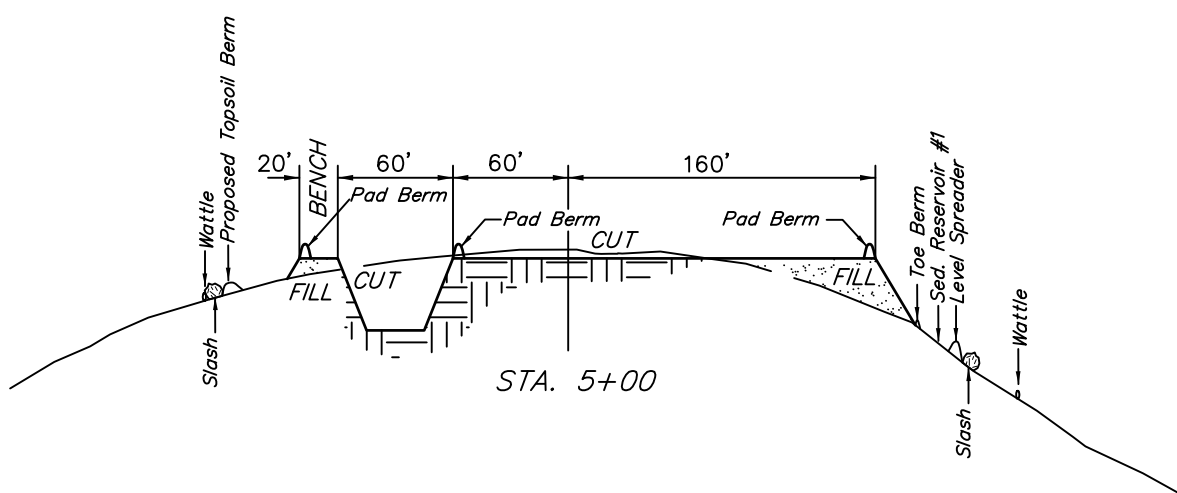
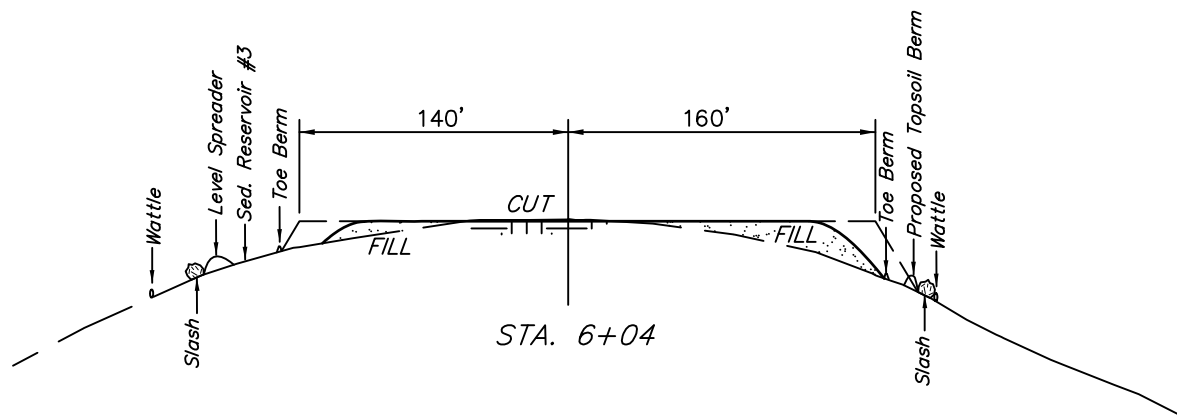
Elev. Ungraded Ground At 8505A-36 of Pod #2 = 8355.7'
FINISHED GRADE ELEV. AT 8505A-36 of Pod #2 = 8351.7'

SCALE: 1" = 60'
DATE: 08-03-09
Drawn By: D.R.B.
Rev: 08-31-09 D.R.B.
Rev: 09-10-09 P.M.B.
Rev: 09-21-09 D.R.B.





DATE: 08-03-09
Drawn By: D.R.B.
Rev: 08-31-09 D.R.B.



NOTE:
Topsoil should not be
Stripped Below Finished
Grade on Substructure Area.

* NOTE:
FILL QUANTITY INCLUDES
5% FOR COMPACTION

APPROXIMATE YARDAGES

CUT
(6") Topsoil Stripping = 3,670 Cu. Yds.
Remaining Location = 12,560 Cu. Yds.

TOTAL CUT = 16,230 CU.YDS.
FILL = 7,840 CU.YDS.

EXCESS MATERIAL = 8,390 Cu. Yds.
Topsoil & Pit Backfill = 5,760 Cu. Yds.
(1/2 Pit Vol.)
EXCESS UNBALANCE = 2,630 Cu. Yds.
(After Interim Rehabilitation)



SCALE: 1" = 60'
DATE: 08-03-09
Drawn By: D.R.B.
Rev: 08-17-09 D.R.B.
Rev: 08-31-09 D.R.B.
Rev: 09-21-09 D.R.B.

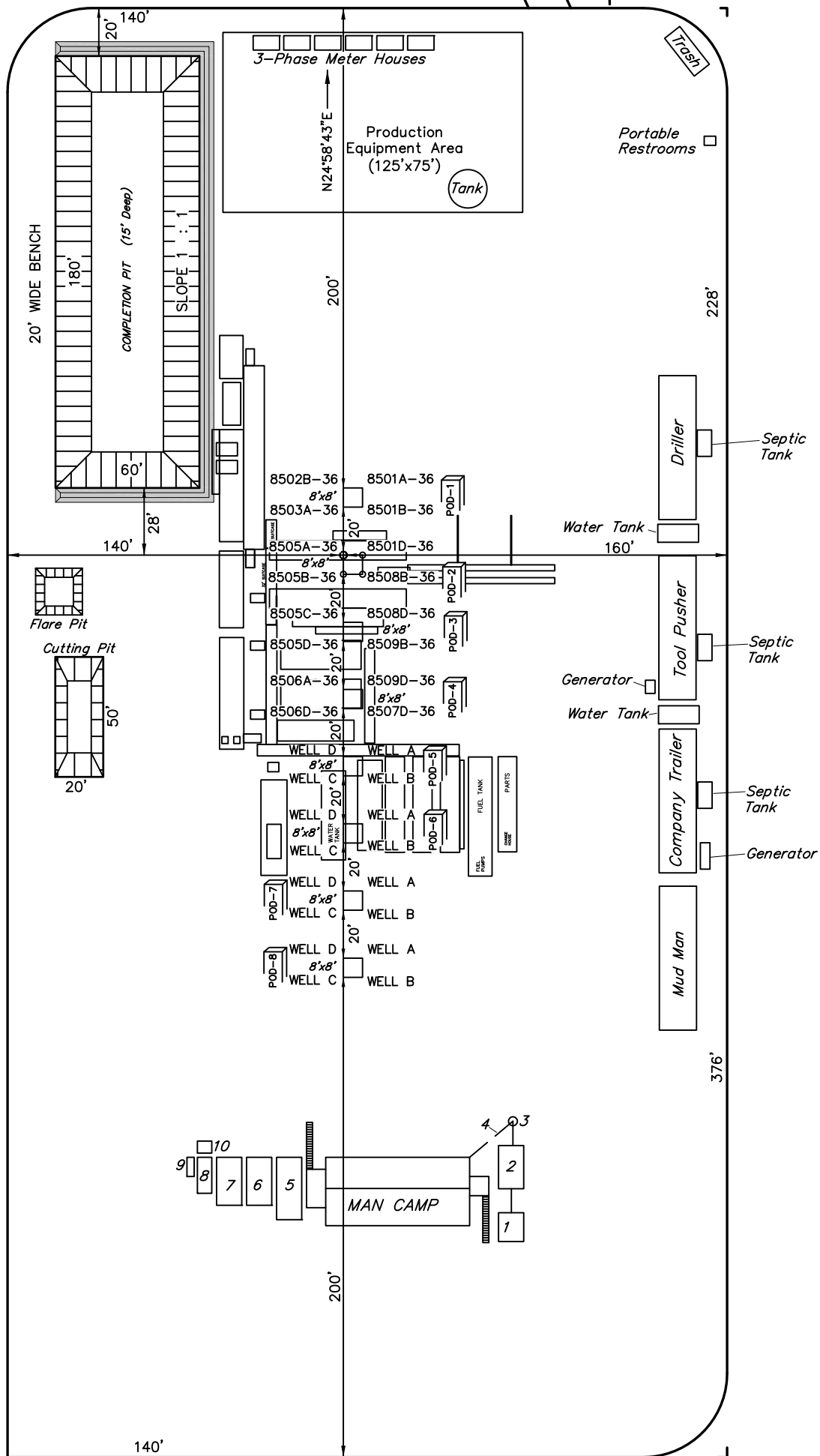
TYPICAL RIG LAYOUT FOR
WELL PAD B36 496
SECTION 36, T4S, R96W, 6th P.M.
LOT 2

Proposed Pipeline

Access Road



COMPLETION PIT
Total Pit Capacity
W/2' of Freeboard
= 16,360 Bbls. ±
Total Pit Volume
= 4,170 Cu. Yds.



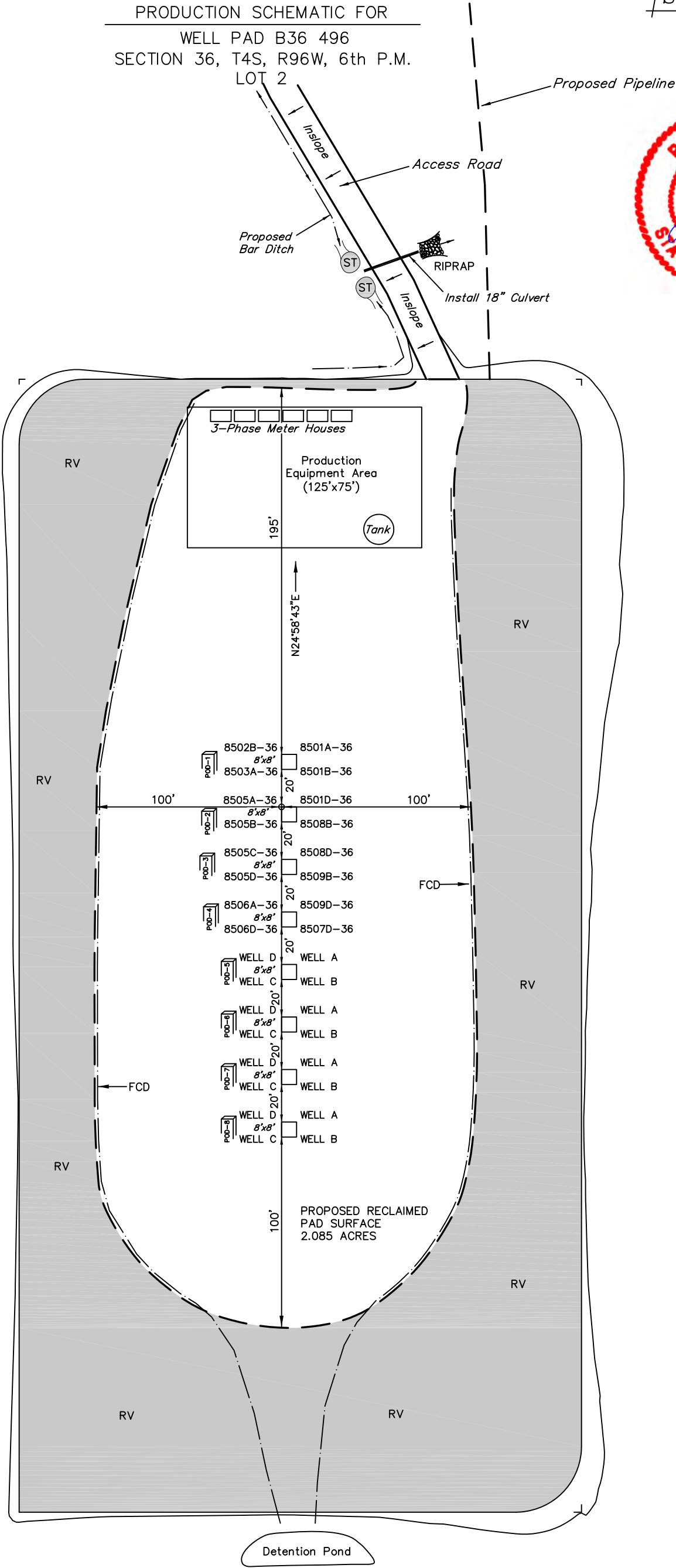
LEGEND:
1 - OVERFLOW
2 - SEWER TANK
3 - LIFT STATION
4 - SEWER LINE
5 - WATER TANK
6 - FREEZER
7 - STORAGE
8 - GENERATOR
9 - FUEL
10 - TRANSFORMER

PRODUCTION SCHEMATIC FOR
WELL PAD B36 496
SECTION 36, T4S, R96W, 6th P.M.
LOT 2



SCALE: 1" = 60'
DATE: 08-03-09
Drawn By: D.R.B.

Rev: 08-17-09 D.R.B.
Rev: 08-31-09 D.R.B.
Rev: 09-21-09 D.R.B.
Rev: 09-29-09 D.R.B.



SWMP LEGEND:
FCD - FLOW CONTROL DITCH
RV - REVEGETATION

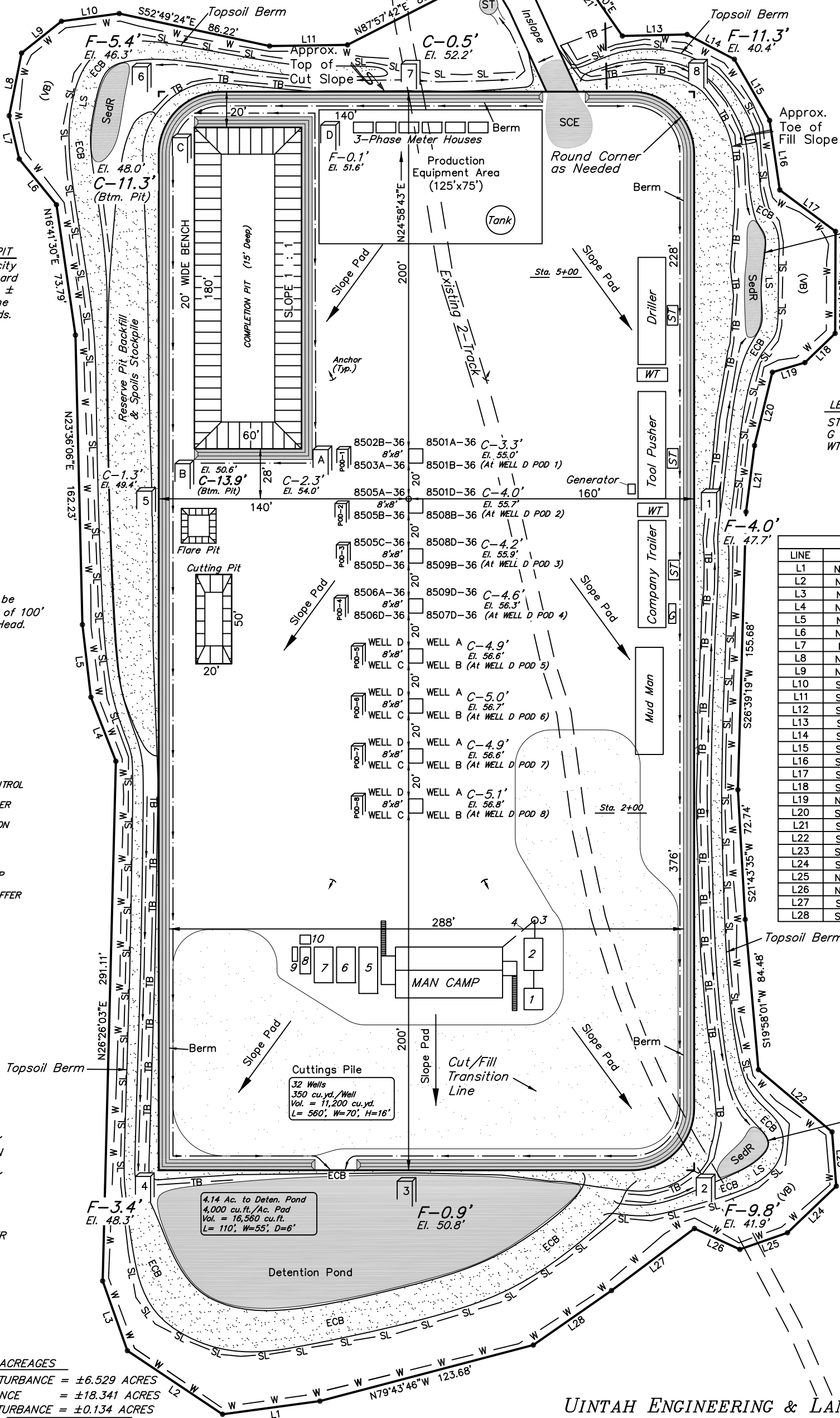
SURFACE DISTURBANCE AREA FOR

WELL PAD B36 496
SECTION 36, T4S, R96W, 6th P.M.
LOT 2



SCALE: 1" = 60'
DATE: 08-03-09
Drawn By: D.R.B.

Rev: 08-17-09 D.R.B.
Rev: 08-31-09 D.R.B.
Rev: 09-10-09 P.M.B.
Rev: 09-21-09 D.R.B.
Rev: 11-02-09 D.R.B.
Rev: 11-04-09 D.R.B.



COMPLETION PIT
Total Pit Capacity
W/2' of Freeboard
= 16,360 Bbls. ±
Total Pit Volume
= 4,170 Cu. Yds.

NOTE:
Flare Pit is to be
located a min. of 100'
from the Well Head.

SWMP LEGEND:

ECB - EROSION CONTROL
BLANKET
LS - LEVEL SPREADER
SCE - STABILIZED
CONSTRUCTION
ENTRANCE
SedR - SEDIMENT
RESERVOIR
SL - SLASH
ST - SEDIMENT TRAP
TB - TOE BERM
VB - VEGETATED BUFFER
W - WATTLE

LEGEND:

1 - OVERFLOW
2 - SEWER TANK
3 - LIFT STATION
4 - SEWER LINE
5 - WATER TANK
6 - FREEZER
7 - STORAGE
8 - GENERATOR
9 - FUEL
10 - TRANSFORMER

APPROXIMATE ACREAGES

APPROX. WELL DISTURBANCE = ±6.529 ACRES
PIPELINE DISTURBANCE = ±18.341 ACRES
ACCESS ROAD DISTURBANCE = ±0.134 ACRES
TOTAL = ±25.004 ACRES

Sta. 6+04

Sta. 3+76

Sta. 0+00

LEGEND:
ST - Septic Tank
G - Generator
WT - Water Tank

LINE TABLE		
LINE	BEARING	LENGTH
L1	N72°42'43"W	55.03'
L2	N31°17'23"W	64.10'
L3	N05°26'11"E	41.47'
L4	N03°43'50"E	38.53'
L5	N18°15'50"E	40.84'
L6	N14°10'20"W	33.00'
L7	N11°51'11"E	24.87'
L8	N36°09'37"E	35.82'
L9	N76°28'30"E	28.57'
L10	S72°39'39"E	32.63'
L11	S65°52'33"E	43.63'
L12	S85°26'58"E	50.96'
L13	S66°21'12"E	36.30'
L14	S37°21'27"E	29.90'
L15	S04°58'45"E	39.55'
L16	S16°39'54"W	39.34'
L17	S28°25'37"E	38.93'
L18	S71°02'35"W	23.55'
L19	N81°35'02"W	19.02'
L20	S38°39'29"W	42.25'
L21	S32°18'16"W	37.44'
L22	S24°49'52"E	54.00'
L23	S20°28'58"W	30.46'
L24	S71°20'45"W	37.81'
L25	N84°16'40"W	28.28'
L26	N40°15'44"W	27.97'
L27	S78°11'37"W	58.04'
L28	S80°06'04"W	53.37'

0.14 Ac. to Sed. Res. #2
3,600 cu.ft./Ac. Drainage
Vol. = 504 cu.ft.
L= 32', W=10', D=4'