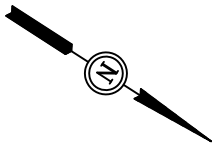


EnCana OIL & GAS (USA) INC.

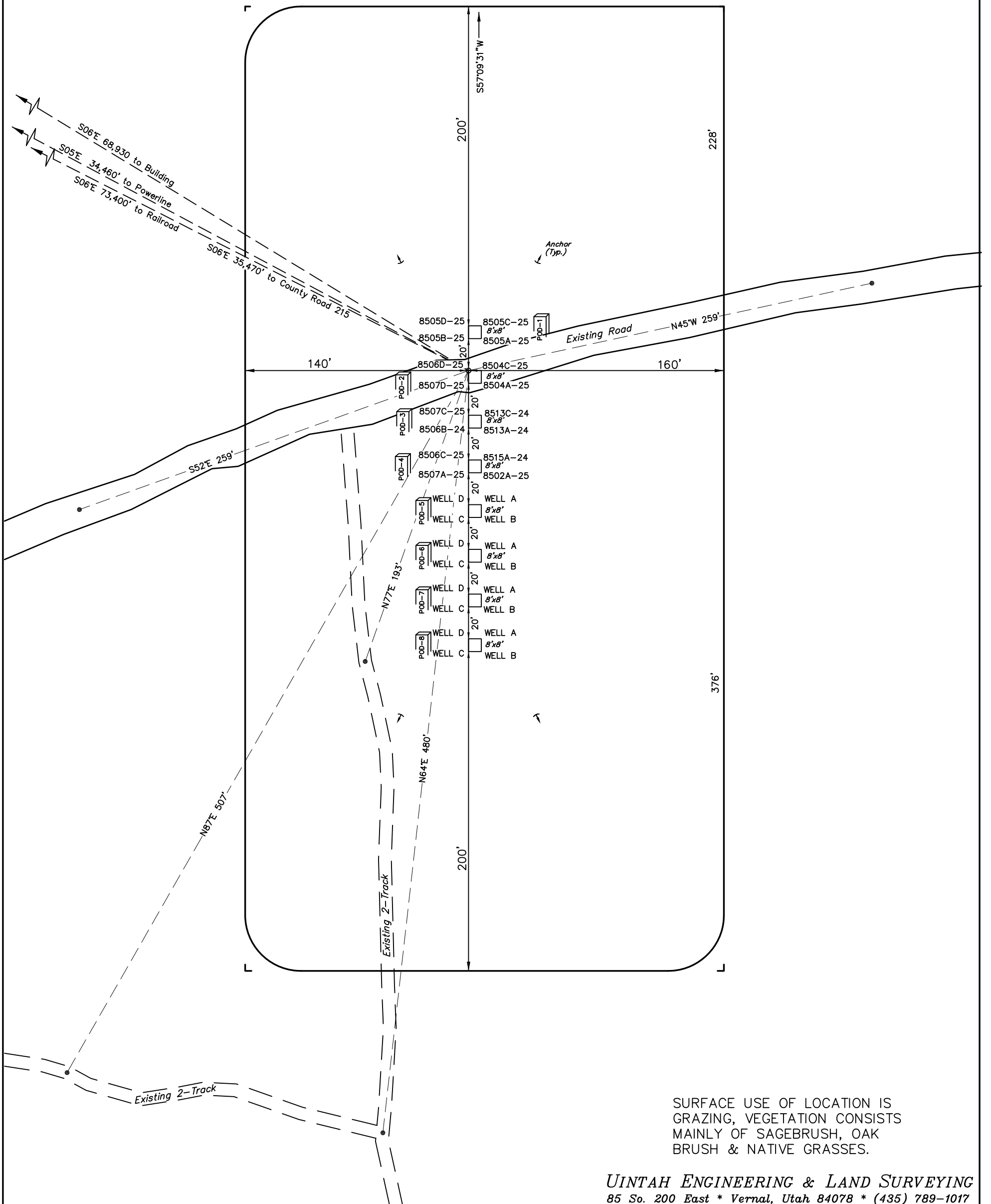
ADDENDUM TO LEGAL PLATS FOR

WELL PAD F25 496
SECTION 25, T4S, R96W, 6th P.M.
SE 1/4 NW 1/4

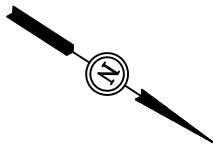
Sheet 1t of 11



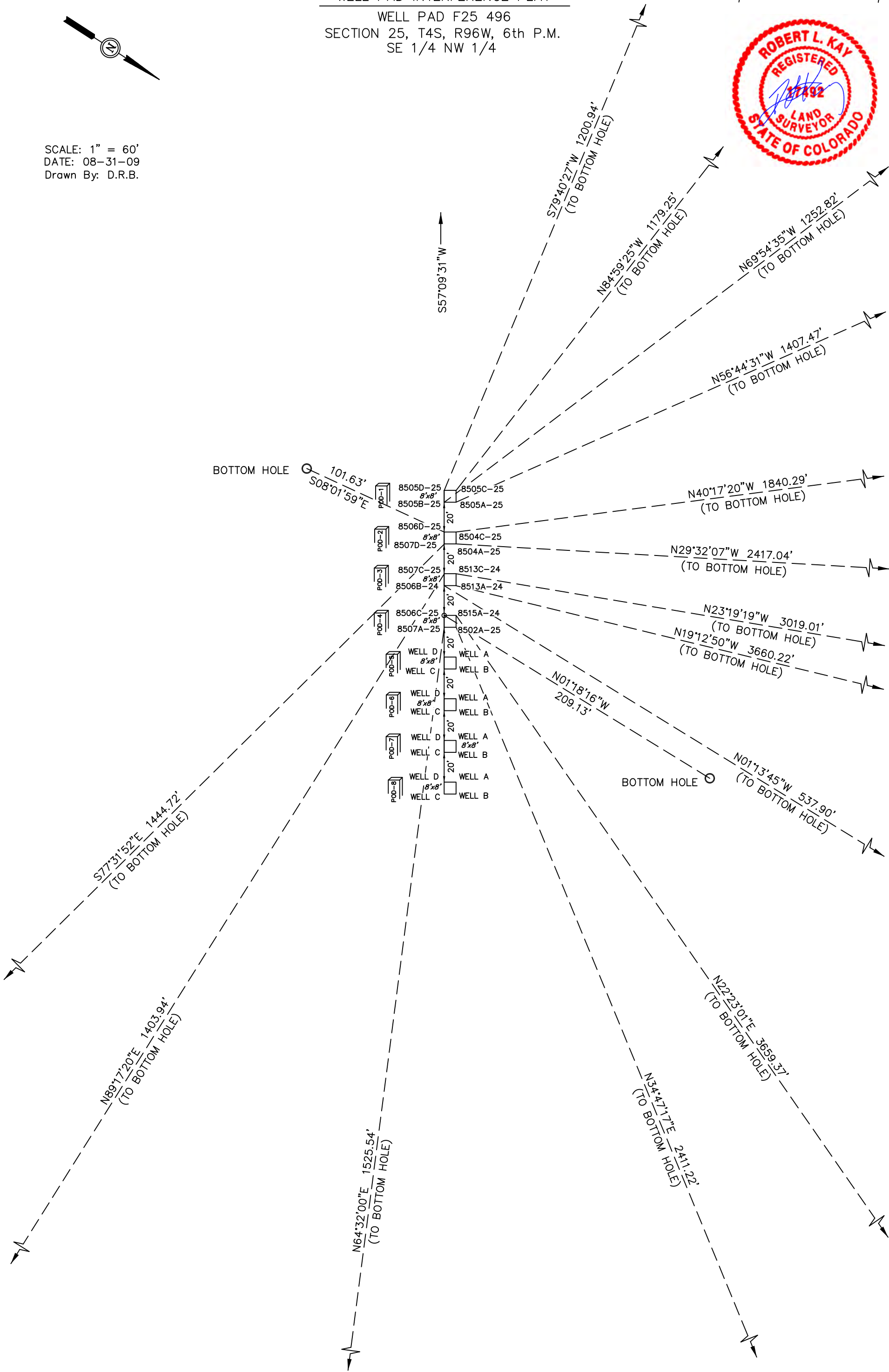
SCALE: 1" = 60'
DATE: 08-03-09
Drawn By: D.R.B.
Rev: 08-17-09 D.R.B.
Rev: 08-31-09 D.R.B.
Rev: 09-17-09 D.R.B.



SURFACE USE OF LOCATION IS
GRAZING, VEGETATION CONSISTS
MAINLY OF SAGEBRUSH, OAK
BRUSH & NATIVE GRASSES.



SCALE: 1" = 60'
DATE: 08-31-09
Drawn By: D.R.B.



LOCATION LAYOUT FOR

WELL PAD F25 496
SECTION 25, T4S, R96W, 6th P.M.
SE 1/4 NW 1/4



SCALE: 1" = 60'

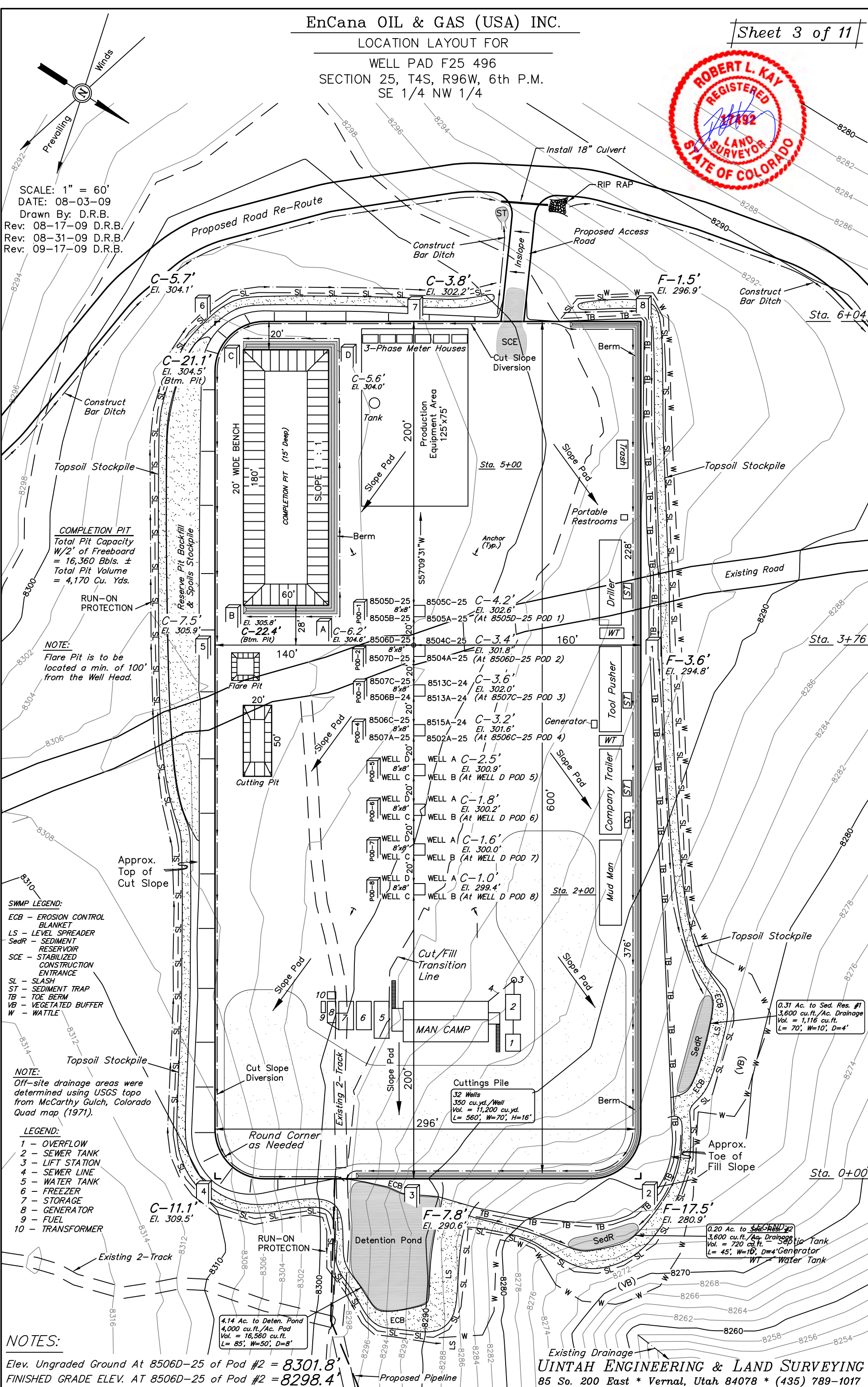
DATE: 08-03-09

Drawn By: D.R.B.

Rev: 08-17-09 D.R.B.

Rev: 08-31-09 D.R.B.

Rev: 09-17-09 D.R.B.



NOTES:

Elev. Ungraded Ground At 8506D-25 of Pod #2 = 8301.8'
FINISHED GRADE ELEV. AT 8506D-25 of Pod #2 = 8298.4'

UINTAH ENGINEERING & LAND SURVEYING
85 So. 200 East * Vernal, Utah 84078 * (435) 789-1017

EnCana OIL & GAS (USA) INC.

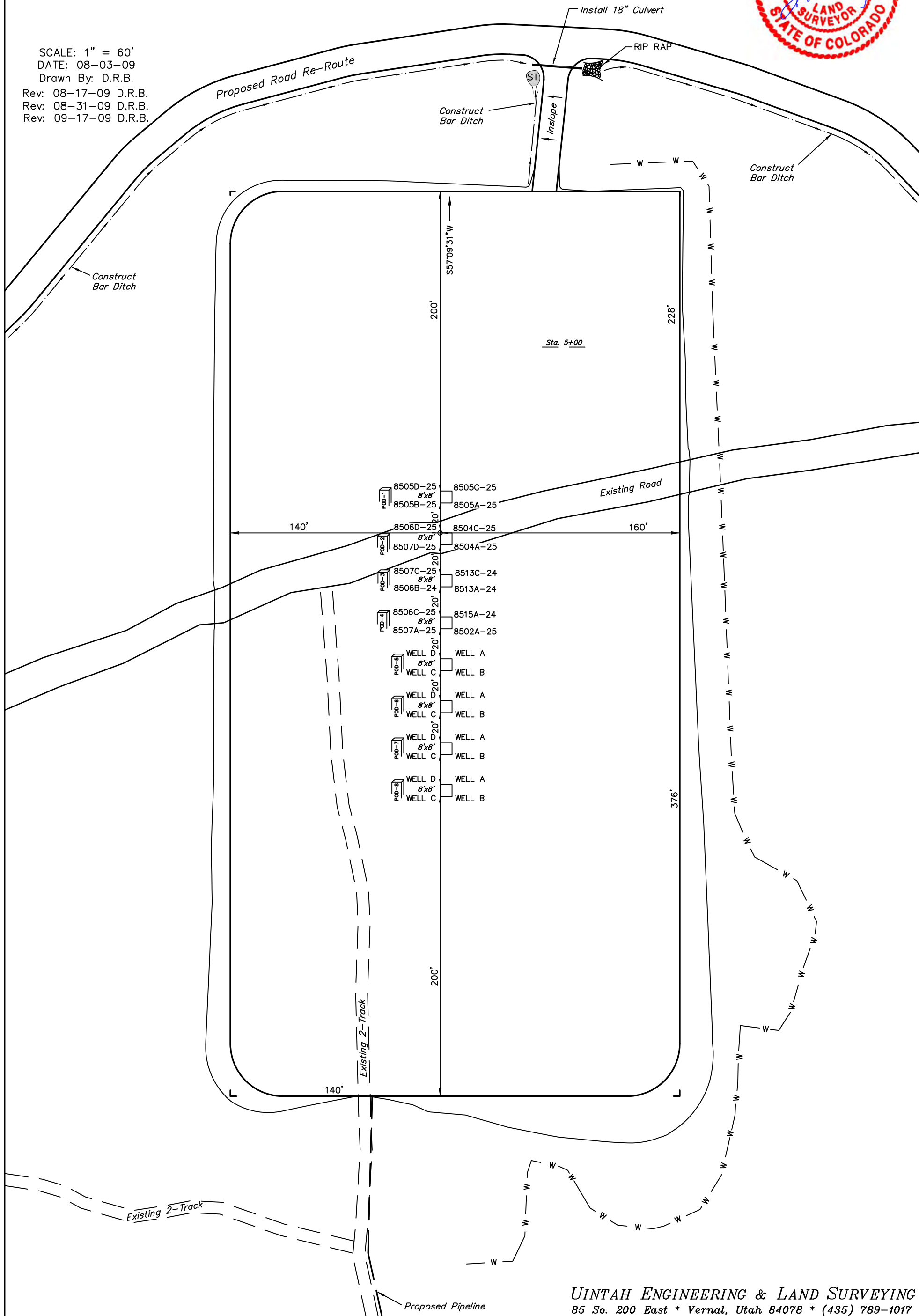
PRE-CONSTRUCTION LAYOUT FOR

WELL PAD F25 496
SECTION 25, T4S, R96W, 6th P.M.
SE 1/4 NW 1/4

Sheet 3a of 11



SCALE: 1" = 60'
DATE: 08-03-09
Drawn By: D.R.B.
Rev: 08-17-09 D.R.B.
Rev: 08-31-09 D.R.B.
Rev: 09-17-09 D.R.B.



TYPICAL CROSS SECTIONS FOR

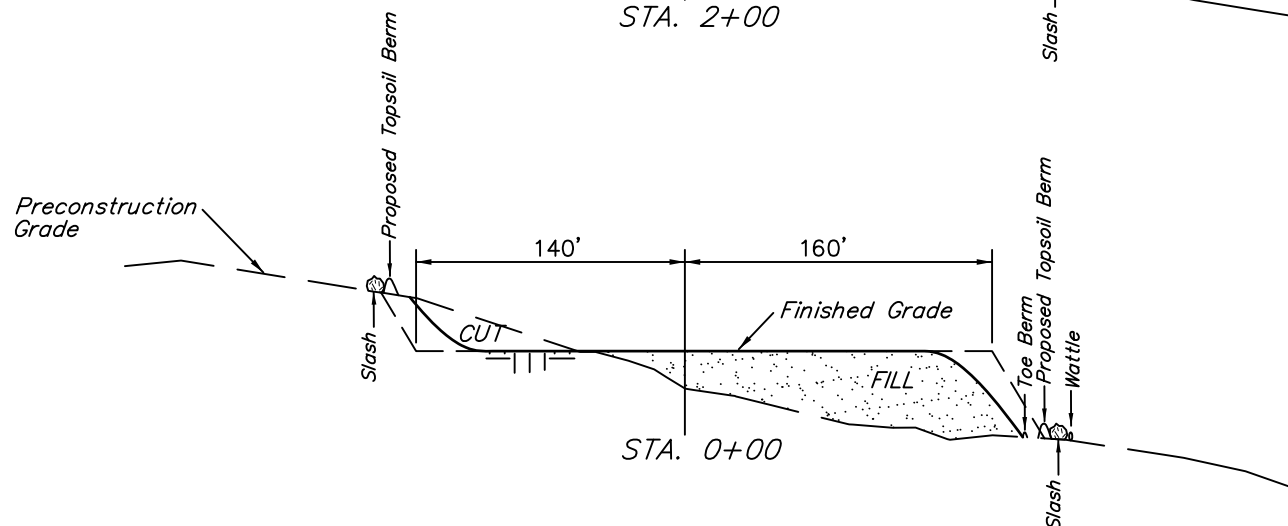
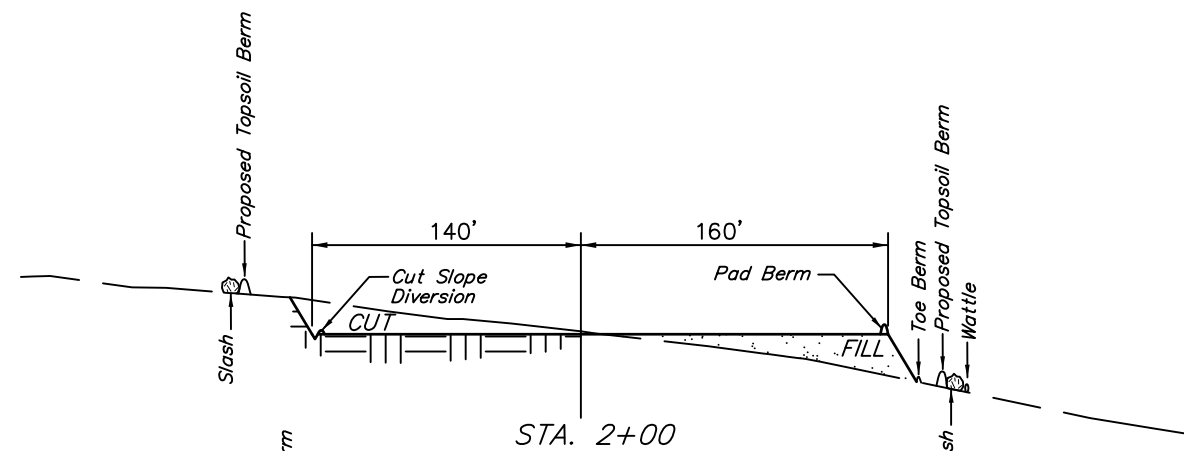
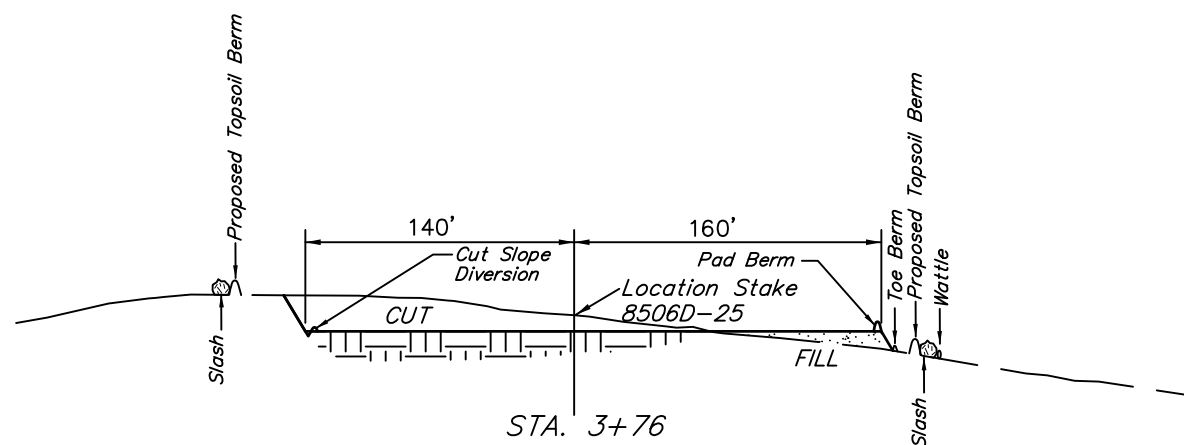
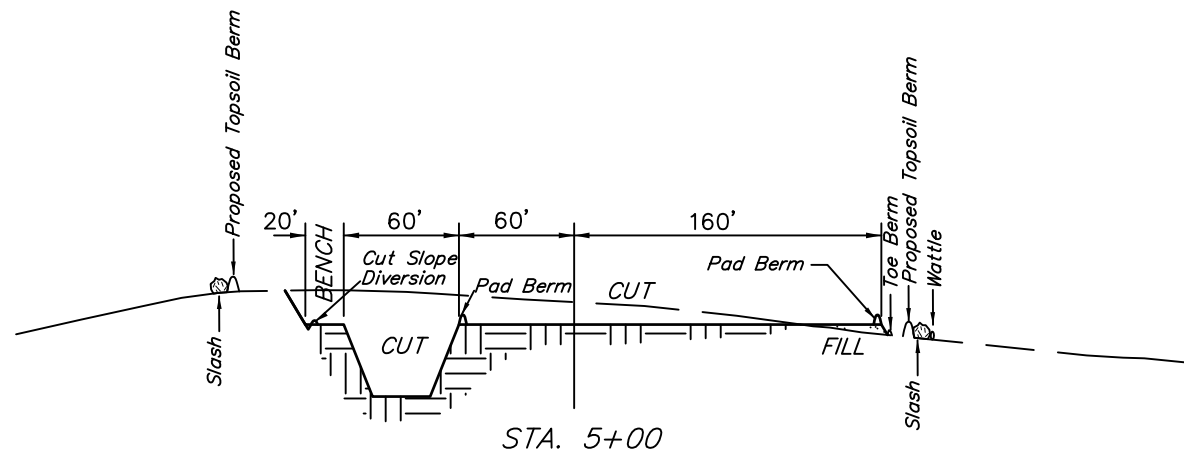
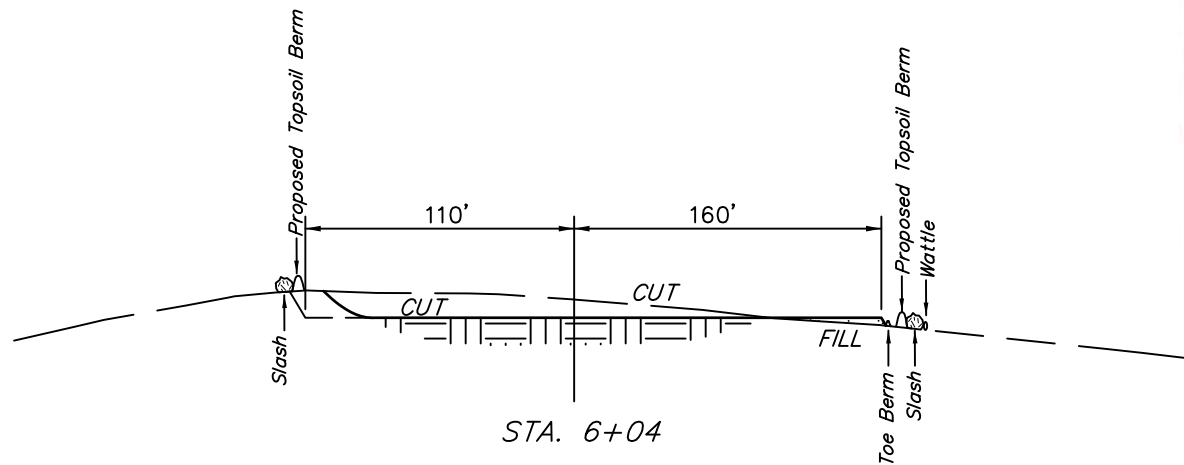
WELL PAD F25 496

SECTION 25, T4S, R96W, 6th P.M.

SE 1/4 NW 1/4

1" = 40'
X-Section
Scale
1" = 100'

DATE: 08-03-09
Drawn By: D.R.B.
Rev: 08-31-09 D.R.B.



NOTE:
Topsoil should not be
Stripped Below Finished
Grade on Substructure Area.

* NOTE:
FILL QUANTITY INCLUDES
5% FOR COMPACTION

APPROXIMATE YARDAGES

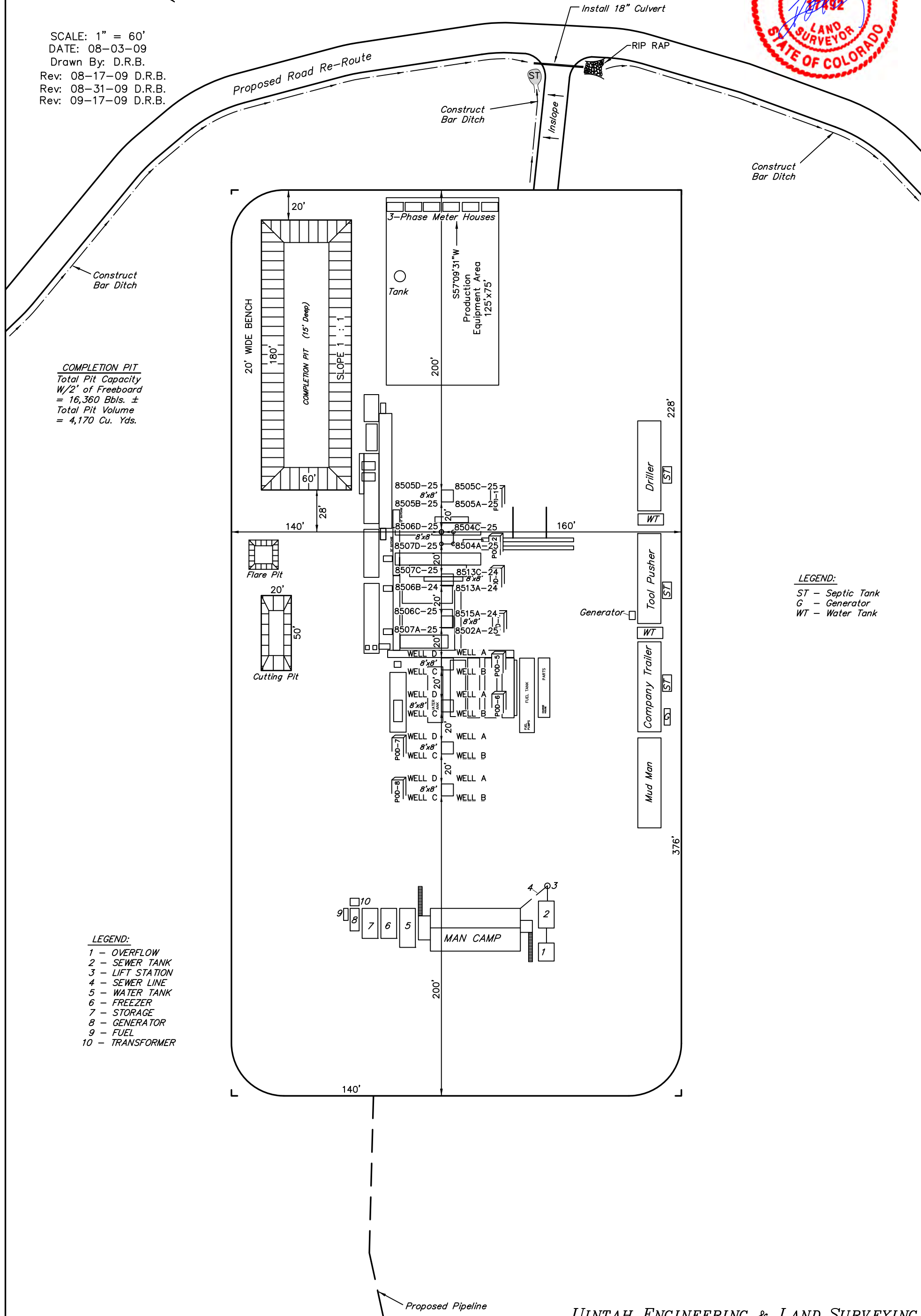
CUT
(6") Topsoil Stripping = 3,840 Cu. Yds.
Remaining Location = 20,450 Cu. Yds.
TOTAL CUT = 24,290 CU.YDS.
FILL = 15,880 CU.YDS.

EXCESS MATERIAL = 8,410 Cu. Yds.
Topsoil & Pit Backfill = 5,930 Cu. Yds.
(1/2 Pit Vol.)
EXCESS UNBALANCE = 2,480 Cu. Yds.
(After Interim Rehabilitation)

TYPICAL RIG LAYOUT FOR
WELL PAD F25 496
SECTION 25, T4S, R96W, 6th P.M.
SE 1/4 NW 1/4



SCALE: 1" = 60'
DATE: 08-03-09
Drawn By: D.R.B.
Rev: 08-17-09 D.R.B.
Rev: 08-31-09 D.R.B.
Rev: 09-17-09 D.R.B.



LEGEND:
ST - Septic Tank
G - Generator
WT - Water Tank

LEGEND:
1 - OVERFLOW
2 - SEWER TANK
3 - LIFT STATION
4 - SEWER LINE
5 - WATER TANK
6 - FREEZER
7 - STORAGE
8 - GENERATOR
9 - FUEL
10 - TRANSFORMER

UINTAH ENGINEERING & LAND SURVEYING
85 So. 200 East * Vernal, Utah 84078 * (435) 789-1017

EnCana OIL & GAS (USA) INC.

SURFACE DISTURBANCE AREA FOR

WELL PAD F25 496

SECTION 25, T4S, R96W, 6th P.M.

SE 1/4 NW 1/4

Sheet 7 of 11



SCALE: 1" = 60'

DATE: 08-03-09

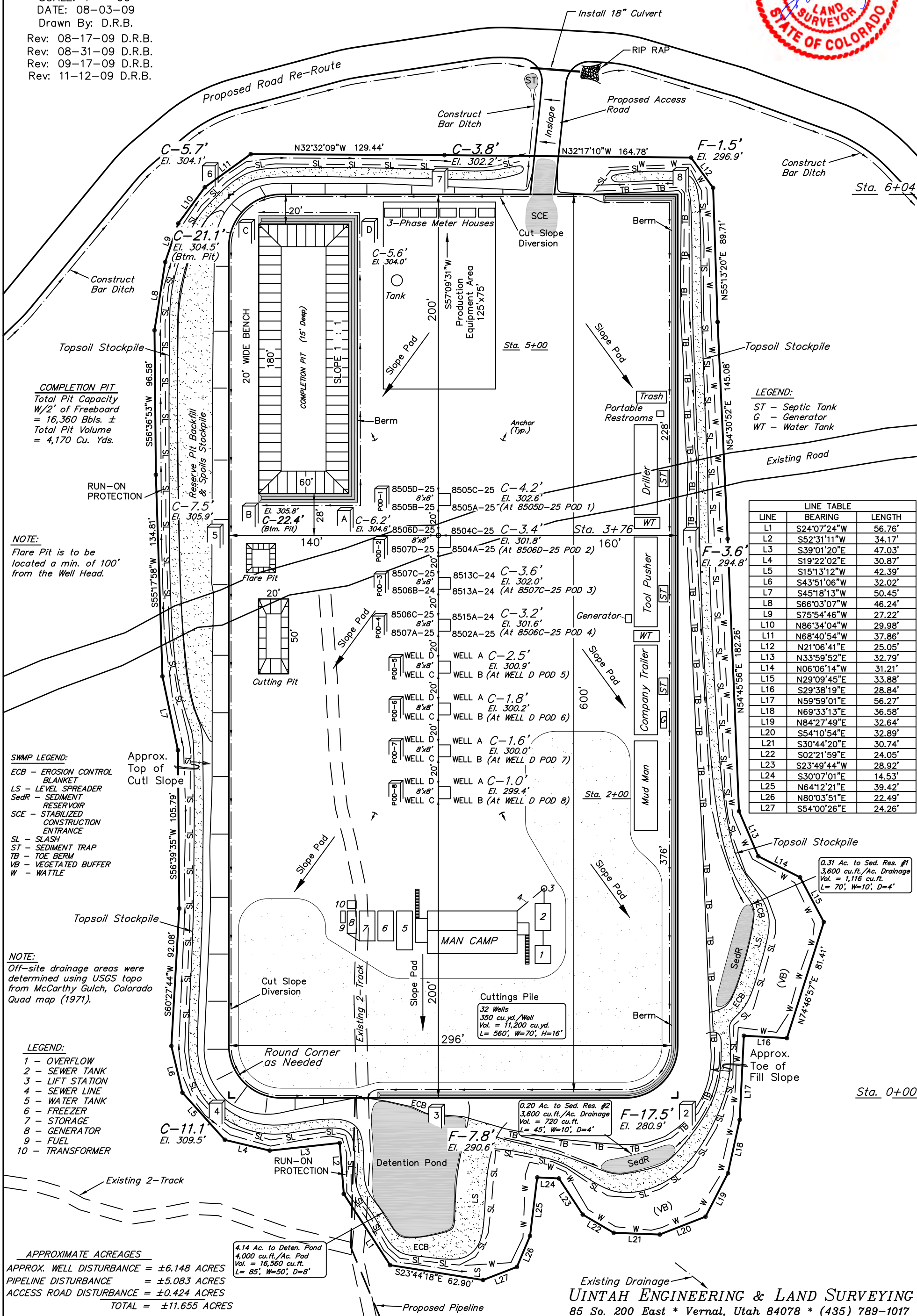
Drawn By: D.R.B.

Rev: 08-17-09 D.R.B.

Rev: 08-31-09 D.R.B.

Rev: 09-17-09 D.R.B.

Rev: 11-12-09 D.R.B.

UINTAH ENGINEERING & LAND SURVEYING
85 So. 200 East * Vernal, Utah 84078 * (435) 789-1017