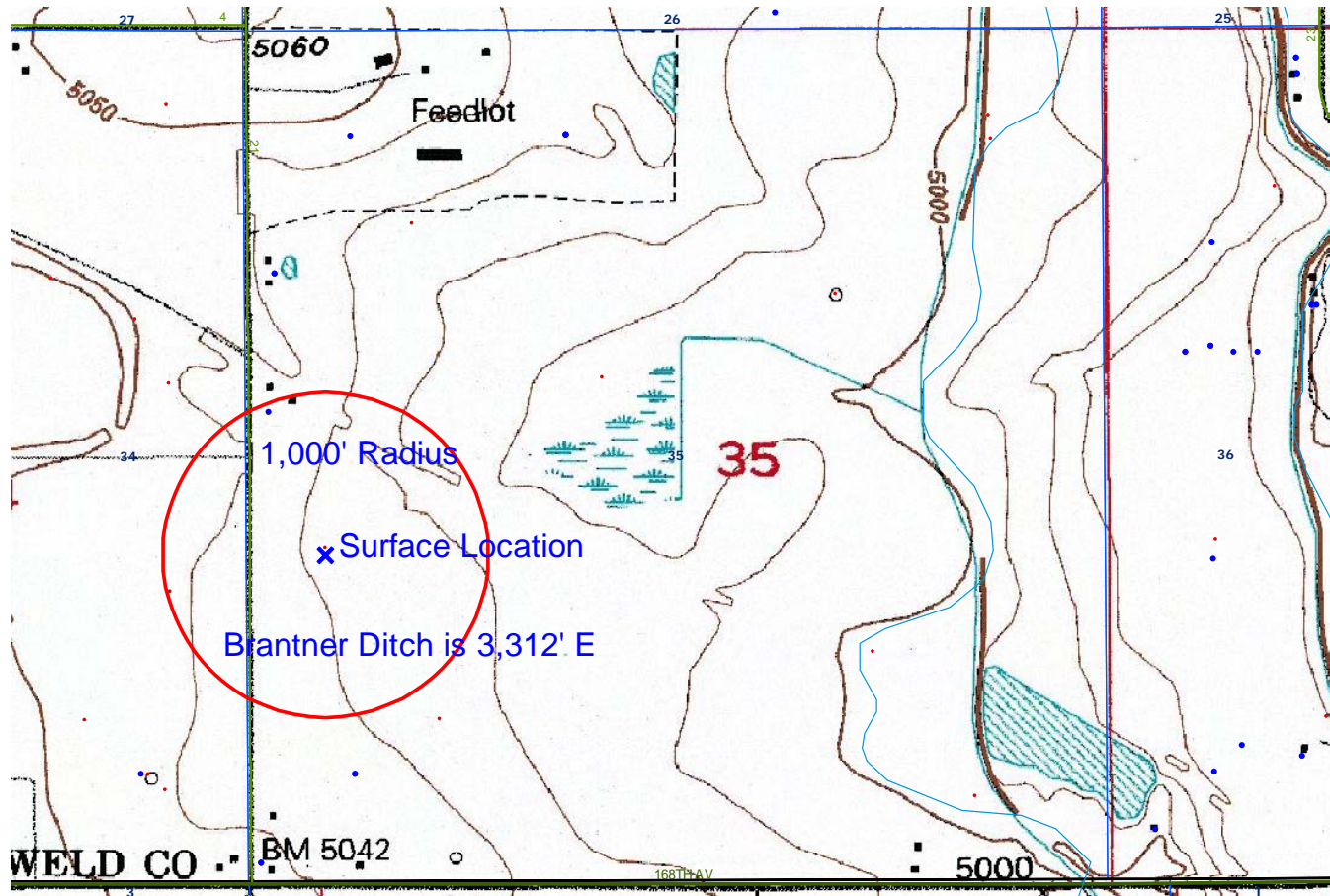


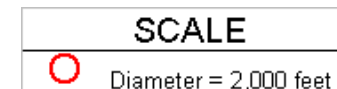
DRY CREEK 13-35

TOPO

HYDROLOGY MAP-A



TOWNSHIP 1 NORTH, RANGE 67 WEST

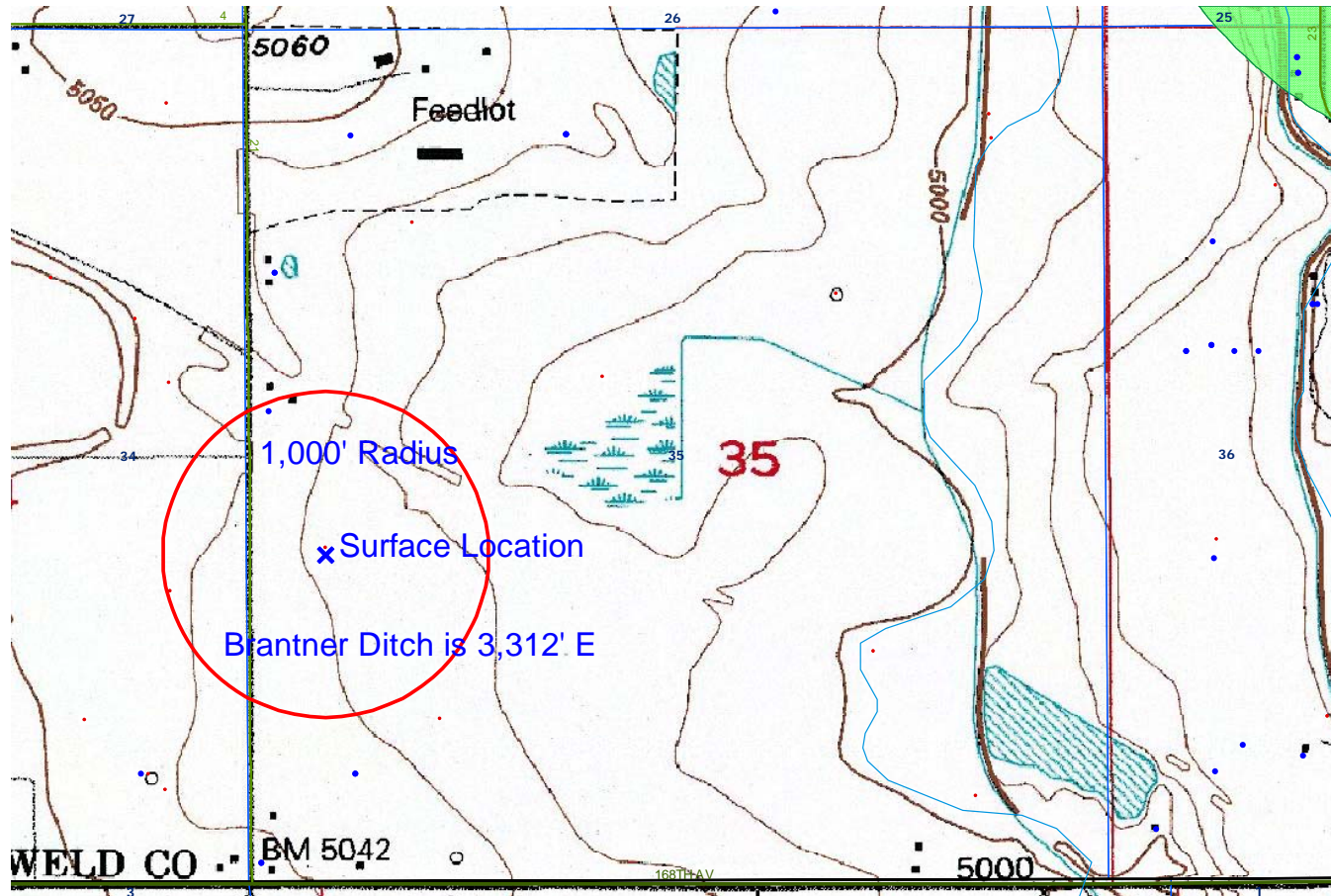


LEGEND A	LEGEND B
WATER RESOURCES	1200-SEARIES WILDLIFE AREAS
Water Wells	RSO Areas
Lakes	RSO_Osprey_Curren
Major Rivers	SWH Areas
Streams	State Wildlife Areas
300-Foot Stream Buffers	

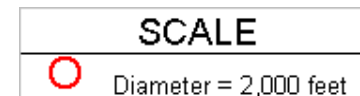
DRY CREEK 13-35

TOPO

HYDROLOGY MAP-B-



TOWNSHIP 1 NORTH, RANGE 67 WEST

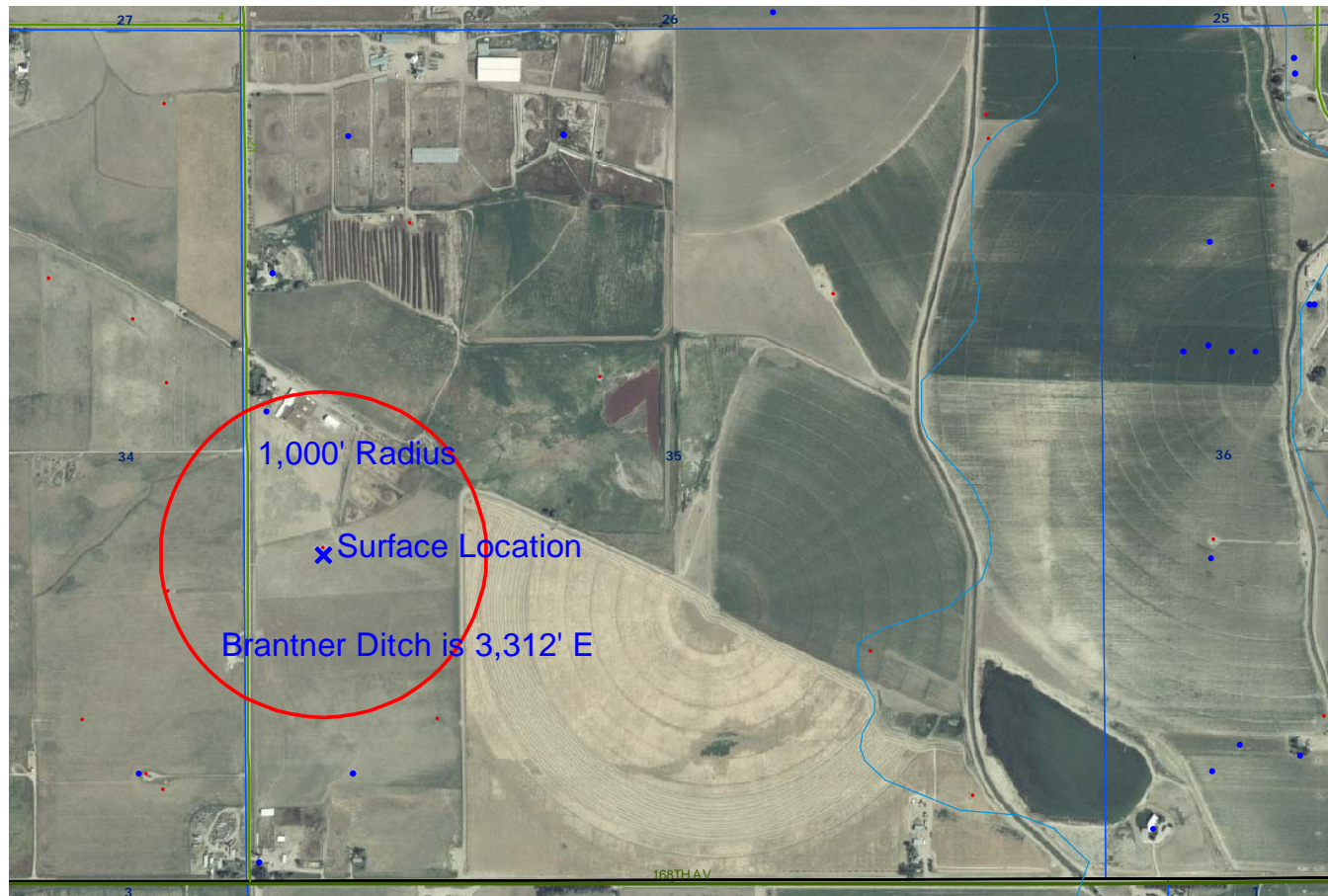


LEGEND A	LEGEND B
WATER RESOURCES	1200-SEARIES WILDLIFE AREAS
● Water Wells	■ RSO Areas
■ Lakes	■ RSO_Osprey_Curren
— Major Rivers	■ SWH Areas
— Streams	■ State Wildlife Areas
■ 300-Foot Stream Buffers	

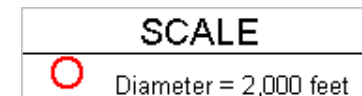
DRY CREEK 13-35

AERIAL

HYDROLOGY MAP-A



TOWNSHIP 1 NORTH, RANGE 67 WEST



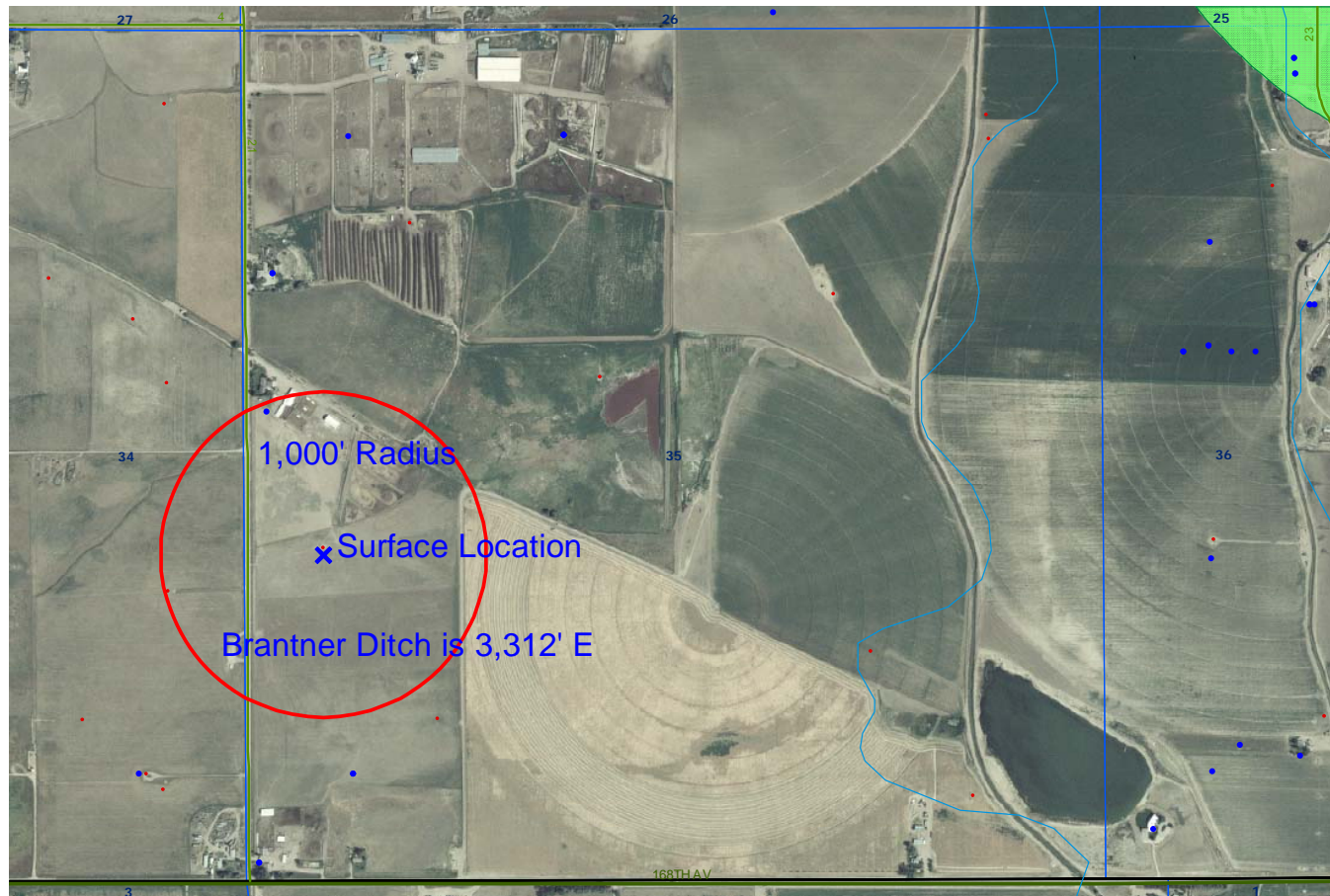
LEGEND A
WATER RESOURCES
Water Wells
Lakes
Major Rivers
Streams
300-Foot Stream Buffers

LEGEND B
1200-SEARIES WILDLIFE AREAS
RSO Areas
RSO_Osprey_Curren
SWH Areas
State Wildlife Areas

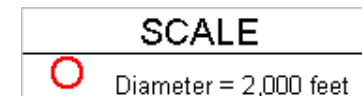
DRY CREEK 13-35






AERIAL



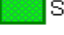

HYDROLOGY MAP-B



TOWNSHIP 1 NORTH, RANGE 67 WEST



LEGEND A
WATER RESOURCES
 Water Wells
 Lakes
 Major Rivers
 Streams
 300-Foot Stream Buffers

LEGEND B
1200-SEARIES WILDLIFE AREAS
 RSO Areas
 RSO_Osprey_Curren
 SWH Areas
 State Wildlife Areas