

QUAD:
PARACHUTE
HOUSE TOP MOUNTAIN



DRG RIFFIN & ASSOCIATES, INC.
1414 ELK ST., ROCK SPRINGS, WY 82901

(307) 362-5028

DRAWN: 1/29/09 - WWG

SCALE: 1" = 2000'

REVISED: 11/06/09 - WWG

DRG JOB No. 14045

REVISE TITLE BLOCK

EXHIBIT/TOPO MAP 8

EXISTING ACCESS MAP

NOBLE ENERGY, INC.

**FEDERAL 7-23A, 7-23B, 7-33A, 7-33B, 7-33C, 7-33D,
7-34A, 7-34B, 7-34C, 7-34D, 7-34D, 7-43C, 7-43D & 7-44A
SECTION 7, T8S, R95W 6th P.M.
GARFIELD COUNTY, COLORADO**

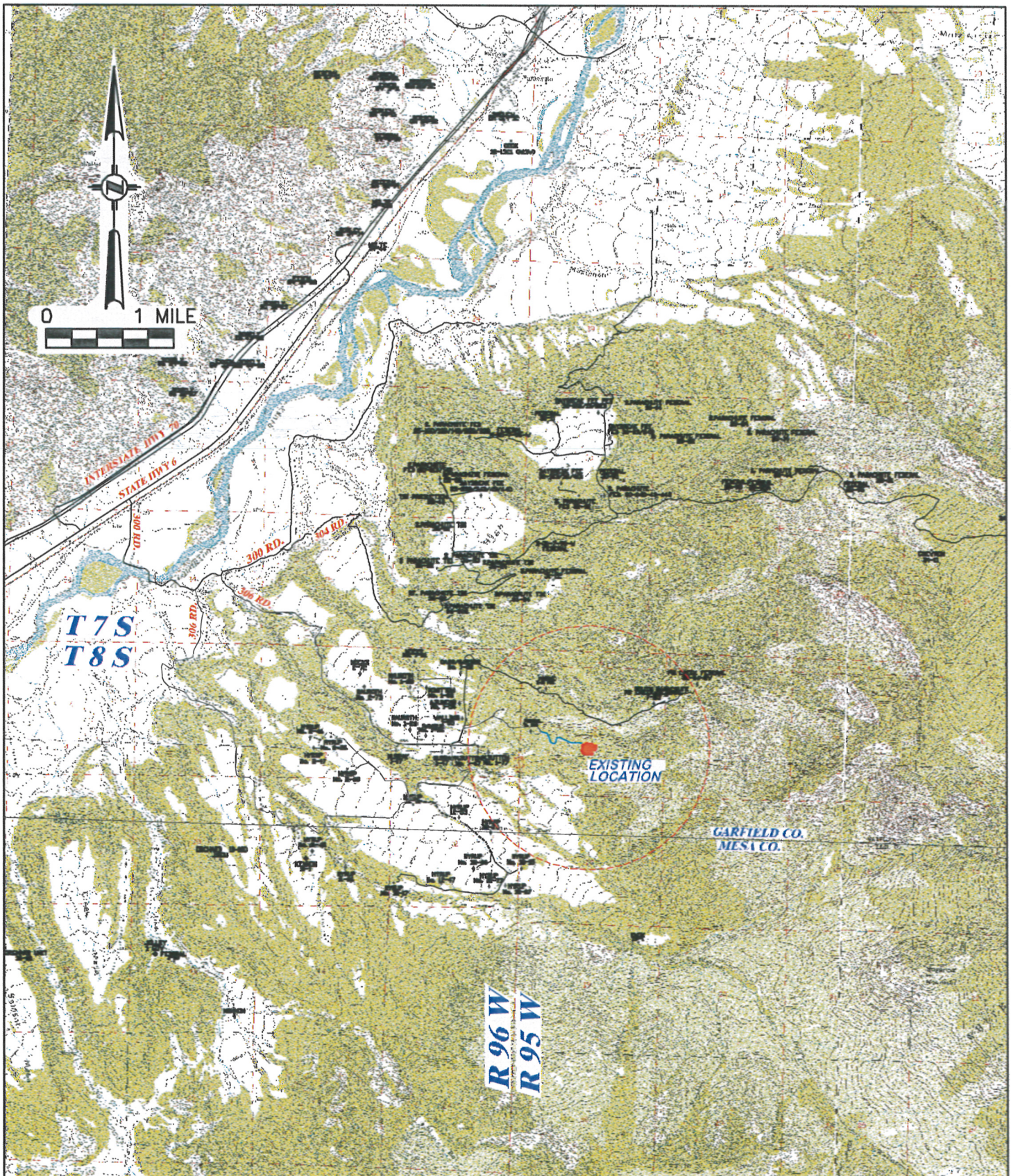
EXISTING ACCESS

EXISTING ACCESS



EXISTING ROAD





DRG RIFFIN & ASSOCIATES, INC.

(307) 362-5028

1414 ELK ST., ROCK SPRINGS, WY 82901

DRAWN: 1/29/09 - WWG

SCALE: 1" = 1 MILE

REVISED: 11/06/09 - RCR

DRG JOB No. 14045

REVISE TITLE BLOCK

EXHIBIT/TOPO MAP 9

EXISTING ACCESS

NOBLE ENERGY, INC.

**FEDERAL 7-23A, 7-23B, 7-33A, 7-33B, 7-33C, 7-33D,
7-34A, 7-34B, 7-34C, 7-34D, 7-43C, 7-43D & 7-44A**

**SECTION 7, T8S, R95W 6th P.M.
GARFIELD COUNTY, COLORADO**

EXISTING ACCESS

EXISTING ACCESS

EXISTING ROAD