

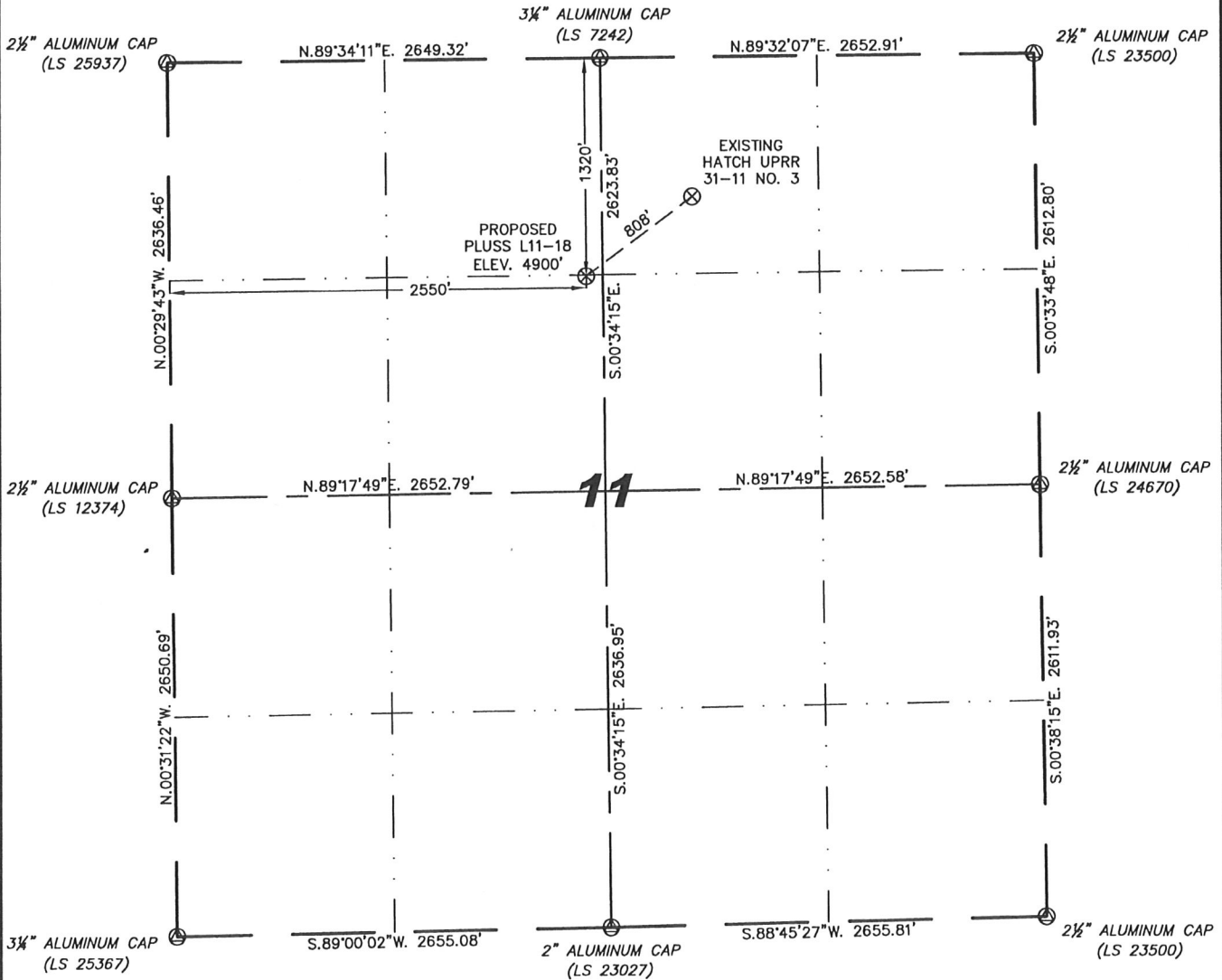
Stell Surveying Services, LLC

1102 West 19th Street P.O. BOX 2073

Cheyenne, Wyoming 82009

WELL LOCATION CERTIFICATE THIS MAP DOES NOT REPRESENT A BOUNDARY SURVEY

SECTION 11
TOWNSHIP 3 NORTH
RANGE 66 WEST



0 1000
Scale: 1" = 1000'

IN ACCORDANCE WITH A REQUEST FROM BRENT SIMANSKI - NOBLE ENERGY INC, STEEL SURVEYING SERVICES, LLC HAS DETERMINED THE LOCATION OF THE PLUSS L11-18 WELL TO BE 1320' FNL, 2550' FWL, AS MEASURED AT NINETY (90) DEGREES FROM THE SECTION LINES, SECTION 11, TOWNSHIP 3 NORTH, RANGE 66 WEST, 6TH PRINCIPLE MERIDIAN, WELD COUNTY, COLORADO.

I HEREBY CERTIFY THAT THIS WELL LOCATION CERTIFICATE WAS PREPARED BY ME, OR UNDER MY DIRECT SUPERVISION, THAT THE FIELD WORK WAS COMPLETED ON 05/08/2009, FOR AND ON BEHALF OF NOBLE ENERGY INC, THAT IT IS NOT A LAND SURVEY PLAT OR AN IMPROVEMENT SURVEY PLAT, AND THAT IT IS NOT TO BE RELIED UPON FOR ESTABLISHMENT OF FENCE, BUILDING, OR OTHER FUTURE IMPROVEMENT LINES.

NOTES:

- 1) BASIS OF BEARINGS FOR THIS MAP ARE BASED UPON GPS OBSERVATIONS MADE ON 05/13/2008 BETWEEN MONUMENTS LOCATED AT THE SOUTHEAST SECTION CORNER AND THE NORTHEAST SECTION CORNER OF SAID SECTION AND WITH ALL BEARINGS SHOWN HEREON RELATIVE THERETO.
- 2) ELEVATIONS ARE BASED UPON NGS OPUS SOLUTION NAVD 88 DATUM.
- 3) THE NEAREST EXISTING WELL IS: HATCH UPRR 31-11 NO. 3, 808' NORTHEAST.
- 4) SEE VISIBLE IMPROVEMENTS EXHIBIT FOR ALL IMPROVEMENTS WITHIN 400'.
- 5) THE LOCATION FALLS IN PASTURE LAND.

LATITUDE & LONGITUDE (NAD 83 SURFACE HOLE):
 LATITUDE: N 40.24307°
 LONGITUDE: W 104.74471°
 PDOP: 1.9
 QUARTER-QUARTER: SE/4NW/4
 NEAREST PROPERTY LINE: 1320' TO THE NORTH

LEGEND

- ⊗ FOUND SURVEY MONUMENT PER MONUMENT RECORD - EXCEPTIONS NOTED.
- (C) CALCULATED DIMENSION

NOTICE: According to Colorado law you MUST commence any legal action based upon any defect in this W.L.C. within three years after you first discover such defect. In no event may any action based upon any defect in this W.L.C. be commenced more than ten years from this sold date of the certification shown hereon.



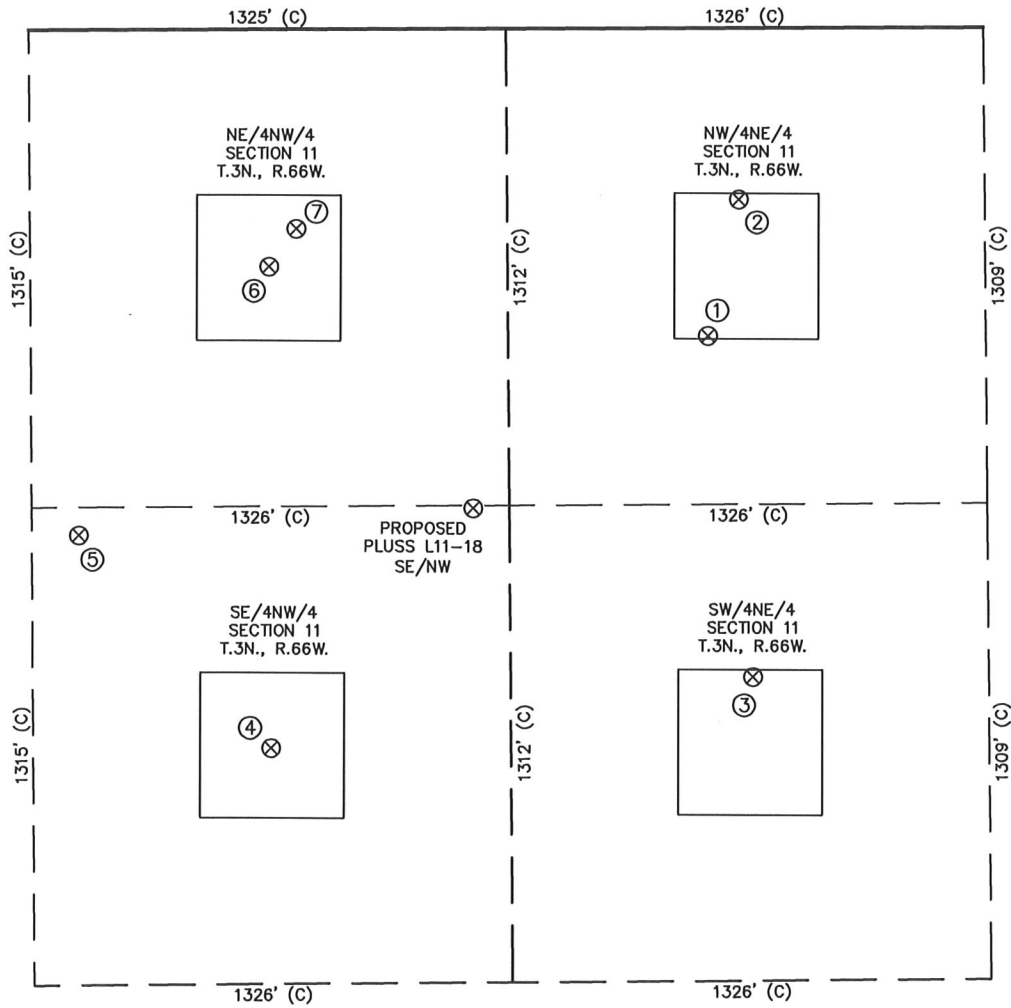
Completed 05/13/2009

David C. Holmes
 Professional Land Surveyor Registration No. 32828
 State of Colorado

JOB #: 09086

SITE SKETCH – PLUSS L11-18

SECTION 11
TOWNSHIP 3 NORTH
RANGE 66 WEST



①	②	③	④	⑤	⑥	⑦
HATCH UPRR 31-11 NO. 3 NW/NE SEC. 11 847' FNL 2098' FEL EL 4922' N 40.24437 W 104.74236 PDOP 2.4	PLUSS L11-2J1 NW/NE SEC. 11 472' FNL 2010' FEL EL 4914' N 40.24540 W 104.74205 PDOP 2.5	HATCH 32-11 SW/NE SEC. 11 1786' FNL 1981' FEL EL 4921' N 40.24179 W 104.74194 PDOP 2.1	PLUSS 11-6 SE/NW SEC. 11 1979' FNL 1986' FWL EL 4895' N 40.24127 W 104.74673 PDOP 2.5	PLUSS L11-2 SE/NW SEC. 11 1392' FNL 1456' FWL EL 4885' N 40.24288 W 104.74863 PDOP 2.5	PLUSS L11-3 NE/NW SEC. 11 654' FNL 1988' FWL EL 4890' N 40.24490 W 104.74672 PDOP 2.5	PLUSS 11-3J1 NE/NW SEC. 11 550' FNL 2064' FWL EL 4891' N 40.24519 W 104.74645 PDOP 2.5



0 500
Scale: 1" = 500'

- NOTES:
1) THIS SKETCH DOES NOT REPRESENT A BOUNDARY SURVEY.
2) THE DATUM FOR THE LATITUDES AND LONGITUDES ON THIS SKETCH IS NAD83.