



# **US ROCKIES REGION PLANNING**

**KERR MCGEE OIL & GAS ONSHORE LP**

**ADAMS\_TALON VIEW 7 PAD**

**P\_TALON VIEW 11-9**

**P\_TALON VIEW 11-9**

**Plan: PLAN #1 09-01-09 RHS**

## **Standard Planning Report**

**01 September, 2009**



**Weatherford®**



**P\_TALON VIEW 11-9**  
**KERR MCGEE OIL & GAS ONSHORE LP**  
**SECTION 9 T1S R67W**  
**1529 FNL 1321 FWL**  
**LAT: 39° 58' 55.956 N**  
**LONG: 104° 53' 54.924 W**



WELL DETAILS: P_TALON VIEW 11-9						
+N/-S	+E/-W	Northing	Easting	Ground Level:	Latitude	Longitude
0.00	0.00	1236937.91	3168529.83	5156.00	39° 58' 55.956 N	104° 53' 54.924 W

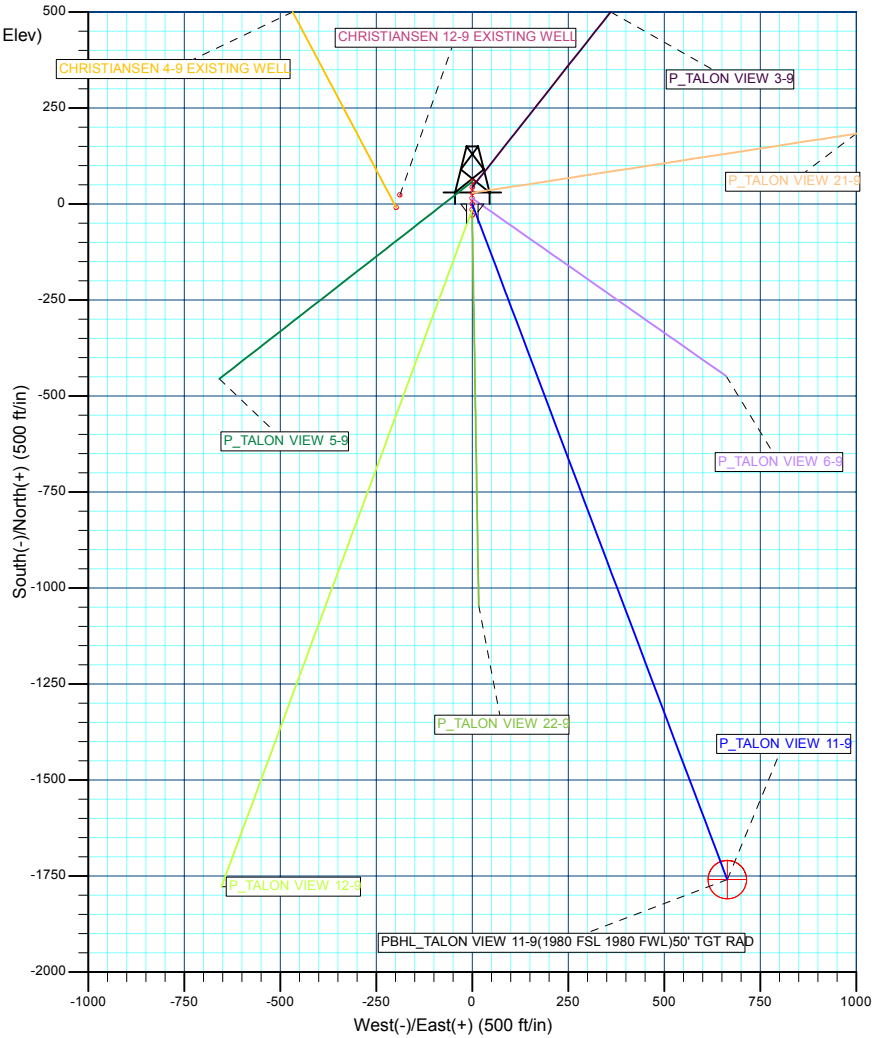
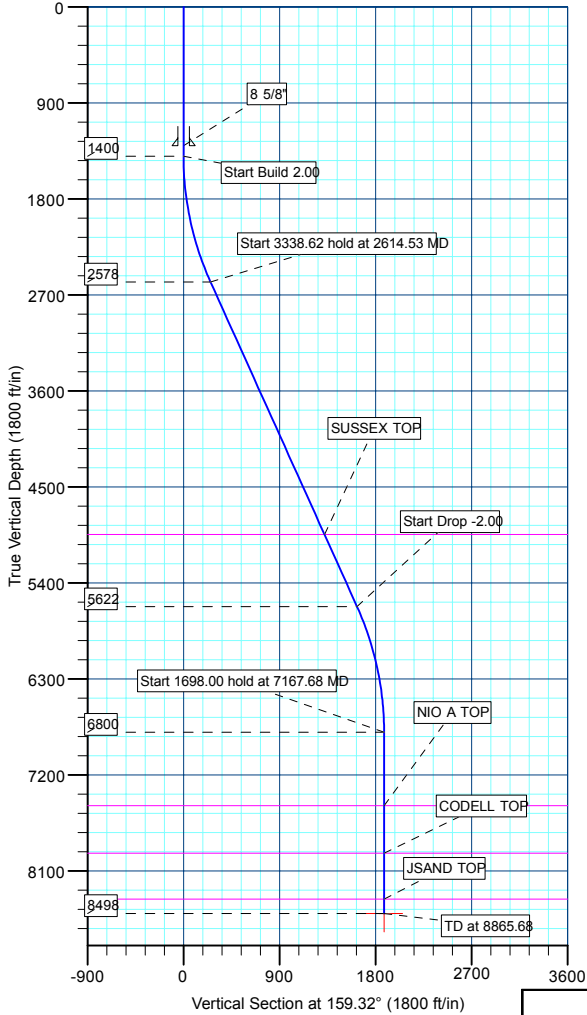
SECTION DETAILS										
MD	Inc	Azi	TVD	+N/-S	+E/-W	DLeg	TFace	VSec	Target	
0.00	0.00	0.00	0.00	0.00	0.00	0.00	0.00	0.00		
1400.00	0.00	0.00	1400.00	0.00	0.00	0.00	0.00	0.00		
2614.53	24.29	159.32	2578.47	-237.27	89.57	2.00	159.32	253.62		
5953.15	24.29	159.32	5621.53	-1522.16	574.61	0.00	0.00	1627.01		
7167.68	0.00	0.00	6800.00	-1759.43	664.19	2.00	180.00	1880.63		
8865.68	0.00	0.00	8498.00	-1759.43	664.19	0.00	0.00	1880.63		PBHL_TALON VIEW 11-9(1980 FSL 1980 FWL)50' TGT RAD

FORMATION TOP DETAILS		
TVDPath	MDPath	Formation
4946.00	5212.01	SUSSEX TOP
7488.00	7855.68	NIO A TOP
7933.00	8300.68	CODELL TOP
8363.00	8730.68	JSAND TOP

CASING DETAILS			
TVD	MD	Name	Size
1300.00	1300.00	8 5/8"	8.62



KB ELEV: WELL @ 5171.00ft (Original Well Elev)  
 GRD ELEV: 5156.00



WELLBORE TARGET DETAILS (MAP CO-ORDINATES AND LAT/LONG)								
Name	TVD	+N/-S	+E/-W	Northing	Easting	Latitude	Longitude	Shape
PBHL	8498.00	-1759.43	664.19	1235183.02	3169205.93	39° 58' 38.568 N	104° 53' 46.392 W	Circle (Radius: 50.00)



<b>Database:</b>	EDM 2003.21 Single User Db	<b>Local Co-ordinate Reference:</b>	Well P_TALON VIEW 11-9
<b>Company:</b>	US ROCKIES REGION PLANNING	<b>TVD Reference:</b>	WELL @ 5171.00ft (Original Well Elev)
<b>Project:</b>	KERR MCGEE OIL & GAS ONSHORE LP	<b>MD Reference:</b>	WELL @ 5171.00ft (Original Well Elev)
<b>Site:</b>	ADAMS_TALON VIEW 7 PAD	<b>North Reference:</b>	True
<b>Well:</b>	P_TALON VIEW 11-9	<b>Survey Calculation Method:</b>	Minimum Curvature
<b>Wellbore:</b>	P_TALON VIEW 11-9		
<b>Design:</b>	PLAN #1 09-01-09 RHS		

<b>Project</b>	KERR MCGEE OIL & GAS ONSHORE LP, KERR MCGEE OIL & GAS ONSHORE LP		
<b>Map System:</b>	US State Plane 1983	<b>System Datum:</b>	Mean Sea Level
<b>Geo Datum:</b>	North American Datum 1983		
<b>Map Zone:</b>	Colorado Northern Zone		

<b>Site</b>	ADAMS_TALON VIEW 7 PAD, SETION 9 T1S R67W				
<b>Site Position:</b>		<b>Northing:</b>	1,236,937.91 ft	<b>Latitude:</b>	39° 58' 55.956 N
<b>From:</b>	Lat/Long	<b>Easting:</b>	3,168,529.83 ft	<b>Longitude:</b>	104° 53' 54.924 W
<b>Position Uncertainty:</b>	0.00 ft	<b>Slot Radius:</b>	in	<b>Grid Convergence:</b>	0.39 °

<b>Well</b>	P_TALON VIEW 11-9					
<b>Well Position</b>	<b>+N/-S</b>	0.00 ft	<b>Northing:</b>	1,236,937.91 ft	<b>Latitude:</b>	39° 58' 55.956 N
	<b>+E/-W</b>	0.00 ft	<b>Easting:</b>	3,168,529.83 ft	<b>Longitude:</b>	104° 53' 54.924 W
<b>Position Uncertainty</b>		0.00 ft	<b>Wellhead Elevation:</b>	ft	<b>Ground Level:</b>	5,156.00 ft

<b>Wellbore</b>	P_TALON VIEW 11-9				
<b>Magnetics</b>	<b>Model Name</b>	<b>Sample Date</b>	<b>Declination (°)</b>	<b>Dip Angle (°)</b>	<b>Field Strength (nT)</b>
	IGRF200510	9/1/2009	9.10	66.76	53,101

<b>Design</b>	PLAN #1 09-01-09 RHS			
<b>Audit Notes:</b>				
<b>Version:</b>	<b>Phase:</b>	PLAN	<b>Tie On Depth:</b>	0.00
<b>Vertical Section:</b>	<b>Depth From (TVD) (ft)</b>	<b>+N/-S (ft)</b>	<b>+E/-W (ft)</b>	<b>Direction (°)</b>
	0.00	0.00	0.00	159.32

<b>Plan Sections</b>										
Measured Depth (ft)	Inclination (°)	Azimuth (°)	Vertical Depth (ft)	+N/-S (ft)	+E/-W (ft)	Dogleg Rate (°/100ft)	Build Rate (°/100ft)	Turn Rate (°/100ft)	TFO (°)	Target
0.00	0.00	0.00	0.00	0.00	0.00	0.00	0.00	0.00	0.00	
1,400.00	0.00	0.00	1,400.00	0.00	0.00	0.00	0.00	0.00	0.00	
2,614.53	24.29	159.32	2,578.47	-237.27	89.57	2.00	2.00	0.00	159.32	
5,953.15	24.29	159.32	5,621.53	-1,522.16	574.61	0.00	0.00	0.00	0.00	
7,167.68	0.00	0.00	6,800.00	-1,759.43	664.19	2.00	-2.00	0.00	180.00	
8,865.68	0.00	0.00	8,498.00	-1,759.43	664.19	0.00	0.00	0.00	0.00	PBHL_TALON VIE



<b>Database:</b>	EDM 2003.21 Single User Db	<b>Local Co-ordinate Reference:</b>	Well P_TALON VIEW 11-9
<b>Company:</b>	US ROCKIES REGION PLANNING	<b>TVD Reference:</b>	WELL @ 5171.00ft (Original Well Elev)
<b>Project:</b>	KERR MCGEE OIL & GAS ONSHORE LP	<b>MD Reference:</b>	WELL @ 5171.00ft (Original Well Elev)
<b>Site:</b>	ADAMS_TALON VIEW 7 PAD	<b>North Reference:</b>	True
<b>Well:</b>	P_TALON VIEW 11-9	<b>Survey Calculation Method:</b>	Minimum Curvature
<b>Wellbore:</b>	P_TALON VIEW 11-9		
<b>Design:</b>	PLAN #1 09-01-09 RHS		

**Planned Survey**

Measured Depth (ft)	Inclination (°)	Azimuth (°)	Vertical Depth (ft)	+N/-S (ft)	+E/-W (ft)	Vertical Section (ft)	Dogleg Rate (°/100ft)	Build Rate (°/100ft)	Turn Rate (°/100ft)
<b>Start Build 2.00</b>									
1,400.00	0.00	0.00	1,400.00	0.00	0.00	0.00	0.00	0.00	0.00
1,500.00	2.00	159.32	1,499.98	-1.63	0.62	1.75	2.00	2.00	0.00
1,600.00	4.00	159.32	1,599.84	-6.53	2.46	6.98	2.00	2.00	0.00
1,700.00	6.00	159.32	1,699.45	-14.68	5.54	15.69	2.00	2.00	0.00
1,800.00	8.00	159.32	1,798.70	-26.08	9.85	27.88	2.00	2.00	0.00
1,900.00	10.00	159.32	1,897.47	-40.72	15.37	43.52	2.00	2.00	0.00
2,000.00	12.00	159.32	1,995.62	-58.57	22.11	62.60	2.00	2.00	0.00
2,100.00	14.00	159.32	2,093.06	-79.61	30.05	85.10	2.00	2.00	0.00
2,200.00	16.00	159.32	2,189.64	-103.83	39.19	110.98	2.00	2.00	0.00
2,300.00	18.00	159.32	2,285.27	-131.18	49.52	140.21	2.00	2.00	0.00
2,400.00	20.00	159.32	2,379.82	-161.63	61.02	172.77	2.00	2.00	0.00
2,500.00	22.00	159.32	2,473.17	-195.16	73.67	208.60	2.00	2.00	0.00
2,600.00	24.00	159.32	2,565.21	-231.71	87.47	247.67	2.00	2.00	0.00
<b>Start 3338.62 hold at 2614.53 MD</b>									
2,614.53	24.29	159.32	2,578.47	-237.27	89.57	253.62	2.00	2.00	0.00
2,700.00	24.29	159.32	2,656.38	-270.17	101.99	288.78	0.00	0.00	0.00
2,800.00	24.29	159.32	2,747.52	-308.65	116.52	329.91	0.00	0.00	0.00
2,900.00	24.29	159.32	2,838.67	-347.14	131.04	371.05	0.00	0.00	0.00
3,000.00	24.29	159.32	2,929.82	-385.62	145.57	412.19	0.00	0.00	0.00
3,100.00	24.29	159.32	3,020.97	-424.11	160.10	453.32	0.00	0.00	0.00
3,200.00	24.29	159.32	3,112.11	-462.60	174.63	494.46	0.00	0.00	0.00
3,300.00	24.29	159.32	3,203.26	-501.08	189.16	535.60	0.00	0.00	0.00
3,400.00	24.29	159.32	3,294.41	-539.57	203.69	576.73	0.00	0.00	0.00
3,500.00	24.29	159.32	3,385.55	-578.05	218.21	617.87	0.00	0.00	0.00
3,600.00	24.29	159.32	3,476.70	-616.54	232.74	659.01	0.00	0.00	0.00
3,700.00	24.29	159.32	3,567.85	-655.02	247.27	700.14	0.00	0.00	0.00
3,800.00	24.29	159.32	3,658.99	-693.51	261.80	741.28	0.00	0.00	0.00
3,900.00	24.29	159.32	3,750.14	-731.99	276.33	782.41	0.00	0.00	0.00
4,000.00	24.29	159.32	3,841.29	-770.48	290.86	823.55	0.00	0.00	0.00
4,100.00	24.29	159.32	3,932.44	-808.97	305.38	864.69	0.00	0.00	0.00
4,200.00	24.29	159.32	4,023.58	-847.45	319.91	905.82	0.00	0.00	0.00
4,300.00	24.29	159.32	4,114.73	-885.94	334.44	946.96	0.00	0.00	0.00
4,400.00	24.29	159.32	4,205.88	-924.42	348.97	988.10	0.00	0.00	0.00
4,500.00	24.29	159.32	4,297.02	-962.91	363.50	1,029.23	0.00	0.00	0.00
4,600.00	24.29	159.32	4,388.17	-1,001.39	378.03	1,070.37	0.00	0.00	0.00
4,700.00	24.29	159.32	4,479.32	-1,039.88	392.55	1,111.51	0.00	0.00	0.00
4,800.00	24.29	159.32	4,570.47	-1,078.36	407.08	1,152.64	0.00	0.00	0.00
4,900.00	24.29	159.32	4,661.61	-1,116.85	421.61	1,193.78	0.00	0.00	0.00
5,000.00	24.29	159.32	4,752.76	-1,155.34	436.14	1,234.92	0.00	0.00	0.00
5,100.00	24.29	159.32	4,843.91	-1,193.82	450.67	1,276.05	0.00	0.00	0.00
5,200.00	24.29	159.32	4,935.05	-1,232.31	465.20	1,317.19	0.00	0.00	0.00
<b>SUSSEX TOP</b>									
5,212.01	24.29	159.32	4,946.00	-1,236.93	466.94	1,322.13	0.00	0.00	0.00
5,300.00	24.29	159.32	5,026.20	-1,270.79	479.72	1,358.33	0.00	0.00	0.00
5,400.00	24.29	159.32	5,117.35	-1,309.28	494.25	1,399.46	0.00	0.00	0.00
5,500.00	24.29	159.32	5,208.50	-1,347.76	508.78	1,440.60	0.00	0.00	0.00
5,600.00	24.29	159.32	5,299.64	-1,386.25	523.31	1,481.73	0.00	0.00	0.00
5,700.00	24.29	159.32	5,390.79	-1,424.73	537.84	1,522.87	0.00	0.00	0.00
5,800.00	24.29	159.32	5,481.94	-1,463.22	552.36	1,564.01	0.00	0.00	0.00
5,900.00	24.29	159.32	5,573.08	-1,501.71	566.89	1,605.14	0.00	0.00	0.00
<b>Start Drop -2.00</b>									
5,953.15	24.29	159.32	5,621.53	-1,522.16	574.61	1,627.01	0.00	0.00	0.00



<b>Database:</b>	EDM 2003.21 Single User Db	<b>Local Co-ordinate Reference:</b>	Well P_TALON VIEW 11-9
<b>Company:</b>	US ROCKIES REGION PLANNING	<b>TVD Reference:</b>	WELL @ 5171.00ft (Original Well Elev)
<b>Project:</b>	KERR MCGEE OIL & GAS ONSHORE LP	<b>MD Reference:</b>	WELL @ 5171.00ft (Original Well Elev)
<b>Site:</b>	ADAMS_TALON VIEW 7 PAD	<b>North Reference:</b>	True
<b>Well:</b>	P_TALON VIEW 11-9	<b>Survey Calculation Method:</b>	Minimum Curvature
<b>Wellbore:</b>	P_TALON VIEW 11-9		
<b>Design:</b>	PLAN #1 09-01-09 RHS		

Planned Survey										
Measured Depth (ft)	Inclination (°)	Azimuth (°)	Vertical Depth (ft)	+N/-S (ft)	+E/-W (ft)	Vertical Section (ft)	Dogleg Rate (°/100ft)	Build Rate (°/100ft)	Turn Rate (°/100ft)	
6,000.00	23.35	159.32	5,664.39	-1,539.86	581.30	1,645.93	2.00	-2.00	0.00	
6,100.00	21.35	159.32	5,756.87	-1,575.44	594.73	1,683.96	2.00	-2.00	0.00	
6,200.00	19.35	159.32	5,850.62	-1,607.98	607.01	1,718.74	2.00	-2.00	0.00	
6,300.00	17.35	159.32	5,945.53	-1,637.44	618.13	1,750.23	2.00	-2.00	0.00	
6,400.00	15.35	159.32	6,041.48	-1,663.78	628.08	1,778.38	2.00	-2.00	0.00	
6,500.00	13.35	159.32	6,138.35	-1,686.97	636.83	1,803.17	2.00	-2.00	0.00	
6,600.00	11.35	159.32	6,236.03	-1,706.99	644.39	1,824.56	2.00	-2.00	0.00	
6,700.00	9.35	159.32	6,334.40	-1,723.80	650.73	1,842.54	2.00	-2.00	0.00	
6,800.00	7.35	159.32	6,433.33	-1,737.39	655.86	1,857.06	2.00	-2.00	0.00	
6,900.00	5.35	159.32	6,532.71	-1,747.74	659.77	1,868.13	2.00	-2.00	0.00	
7,000.00	3.35	159.32	6,632.42	-1,754.84	662.45	1,875.72	2.00	-2.00	0.00	
7,100.00	1.35	159.32	6,732.33	-1,758.69	663.90	1,879.83	2.00	-2.00	0.00	
<b>Start 1698.00 hold at 7167.68 MD</b>										
7,167.68	0.00	0.00	6,800.00	-1,759.43	664.19	1,880.63	2.00	-2.00	0.00	
7,200.00	0.00	0.00	6,832.32	-1,759.43	664.19	1,880.63	0.00	0.00	0.00	
7,300.00	0.00	0.00	6,932.32	-1,759.43	664.19	1,880.63	0.00	0.00	0.00	
7,400.00	0.00	0.00	7,032.32	-1,759.43	664.19	1,880.63	0.00	0.00	0.00	
7,500.00	0.00	0.00	7,132.32	-1,759.43	664.19	1,880.63	0.00	0.00	0.00	
7,600.00	0.00	0.00	7,232.32	-1,759.43	664.19	1,880.63	0.00	0.00	0.00	
7,700.00	0.00	0.00	7,332.32	-1,759.43	664.19	1,880.63	0.00	0.00	0.00	
7,800.00	0.00	0.00	7,432.32	-1,759.43	664.19	1,880.63	0.00	0.00	0.00	
<b>NIO A TOP</b>										
7,855.68	0.00	0.00	7,488.00	-1,759.43	664.19	1,880.63	0.00	0.00	0.00	
7,900.00	0.00	0.00	7,532.32	-1,759.43	664.19	1,880.63	0.00	0.00	0.00	
8,000.00	0.00	0.00	7,632.32	-1,759.43	664.19	1,880.63	0.00	0.00	0.00	
8,100.00	0.00	0.00	7,732.32	-1,759.43	664.19	1,880.63	0.00	0.00	0.00	
8,200.00	0.00	0.00	7,832.32	-1,759.43	664.19	1,880.63	0.00	0.00	0.00	
8,300.00	0.00	0.00	7,932.32	-1,759.43	664.19	1,880.63	0.00	0.00	0.00	
<b>CODELL TOP</b>										
8,300.68	0.00	0.00	7,933.00	-1,759.43	664.19	1,880.63	0.00	0.00	0.00	
8,400.00	0.00	0.00	8,032.32	-1,759.43	664.19	1,880.63	0.00	0.00	0.00	
8,500.00	0.00	0.00	8,132.32	-1,759.43	664.19	1,880.63	0.00	0.00	0.00	
8,600.00	0.00	0.00	8,232.32	-1,759.43	664.19	1,880.63	0.00	0.00	0.00	
8,700.00	0.00	0.00	8,332.32	-1,759.43	664.19	1,880.63	0.00	0.00	0.00	
<b>JSAND TOP</b>										
8,730.68	0.00	0.00	8,363.00	-1,759.43	664.19	1,880.63	0.00	0.00	0.00	
8,800.00	0.00	0.00	8,432.32	-1,759.43	664.19	1,880.63	0.00	0.00	0.00	
<b>PBHL_TALON VIEW 11-9(1980 FSL 1980 FWL)50' TGT RAD</b>										
8,865.68	0.00	0.00	8,498.00	-1,759.43	664.19	1,880.63	0.00	0.00	0.00	

Design Targets										
Target Name	Dip Angle (°)	Dip Dir. (°)	TVD (ft)	+N/-S (ft)	+E/-W (ft)	Northing (ft)	Easting (ft)	Latitude	Longitude	
PBHL_TALON VIEW - hit/miss target - Shape	0.00	0.00	8,498.00	-1,759.43	664.19	1,235,183.02	3,169,205.93	39° 58' 38.568 N	104° 53' 46.392 W	
- plan hits target center - Circle (radius 50.00)										



<b>Database:</b>	EDM 2003.21 Single User Db	<b>Local Co-ordinate Reference:</b>	Well P_TALON VIEW 11-9
<b>Company:</b>	US ROCKIES REGION PLANNING	<b>TVD Reference:</b>	WELL @ 5171.00ft (Original Well Elev)
<b>Project:</b>	KERR MCGEE OIL & GAS ONSHORE LP	<b>MD Reference:</b>	WELL @ 5171.00ft (Original Well Elev)
<b>Site:</b>	ADAMS_TALON VIEW 7 PAD	<b>North Reference:</b>	True
<b>Well:</b>	P_TALON VIEW 11-9	<b>Survey Calculation Method:</b>	Minimum Curvature
<b>Wellbore:</b>	P_TALON VIEW 11-9		
<b>Design:</b>	PLAN #1 09-01-09 RHS		

**Casing Points**

Measured Depth (ft)	Vertical Depth (ft)	Name	Casing Diameter (in)	Hole Diameter (in)
1,300.00	1,300.00	8 5/8"	8.62	11.00

**Formations**

Measured Depth (ft)	Vertical Depth (ft)	Name	Lithology	Dip (°)	Dip Direction (°)
5,212.01	4,946.00	SUSSEX TOP			
7,855.68	7,488.00	NIO A TOP			
8,300.68	7,933.00	CODELL TOP			
8,730.68	8,363.00	JSAND TOP			

**Plan Annotations**

Measured Depth (ft)	Vertical Depth (ft)	Local Coordinates		Comment
		+N/-S (ft)	+E/-W (ft)	
1,400.00	1,400.00	0.00	0.00	Start Build 2.00
2,614.53	2,578.47	-237.27	89.57	Start 3338.62 hold at 2614.53 MD
5,953.15	5,621.53	-1,522.16	574.61	Start Drop -2.00
7,167.68	6,800.00	-1,759.43	664.19	Start 1698.00 hold at 7167.68 MD
8,865.68	8,498.00	-1,759.43	664.19	TD at 8865.68



# **US ROCKIES REGION PLANNING**

**KERR MCGEE OIL & GAS ONSHORE LP  
ADAMS\_TALON VIEW 7 PAD  
P\_TALON VIEW 11-9**

**P\_TALON VIEW 11-9  
PLAN #1 09-01-09 RHS**

## **Anticollision Report**

**01 September, 2009**





<b>Company:</b>	US ROCKIES REGION PLANNING	<b>Local Co-ordinate Reference:</b>	Well P_TALON VIEW 11-9
<b>Project:</b>	KERR MCGEE OIL & GAS ONSHORE LP	<b>TVD Reference:</b>	WELL @ 5171.00ft (Original Well Elev)
<b>Reference Site:</b>	ADAMS_TALON VIEW 7 PAD	<b>MD Reference:</b>	WELL @ 5171.00ft (Original Well Elev)
<b>Site Error:</b>	0.00ft	<b>North Reference:</b>	True
<b>Reference Well:</b>	P_TALON VIEW 11-9	<b>Survey Calculation Method:</b>	Minimum Curvature
<b>Well Error:</b>	0.00ft	<b>Output errors are at</b>	2.00 sigma
<b>Reference Wellbore</b>	P_TALON VIEW 11-9	<b>Database:</b>	EDM 2003.21 Single User Db
<b>Reference Design:</b>	PLAN #1 09-01-09 RHS	<b>Offset TVD Reference:</b>	Offset Datum

<b>Reference</b>	PLAN #1 09-01-09 RHS		
<b>Filter type:</b>	NO GLOBAL FILTER: Using user defined selection & filtering criteria		
<b>Interpolation Method:</b>	Stations	<b>Error Model:</b>	ISCWSA
<b>Depth Range:</b>	0.00 to 20,000.00ft	<b>Scan Method:</b>	Closest Approach 3D
<b>Results Limited by:</b>	Maximum center-center distance of 10,000.00ft	<b>Error Surface:</b>	Elliptical Conic
<b>Warning Levels Evaluated at:</b>	2.00 Sigma		

<b>Survey Tool Program</b>	<b>Date</b>	9/1/2009		
<b>From (ft)</b>	<b>To (ft)</b>	<b>Survey (Wellbore)</b>	<b>Tool Name</b>	<b>Description</b>
0.00	8,865.68	PLAN #1 09-01-09 RHS (P_TALON VIEW	MWD	MWD - Standard

Site Name	Reference Measured Depth (ft)	Offset Measured Depth (ft)	Distance Between Centres (ft)	Distance Between Ellipses (ft)	Separation Factor	Warning
<b>Offset Well - Wellbore - Design</b>						
ADAMS_TALON VIEW 7 PAD						
CHRISTIANSEN 12-9 EXISTING WELL - CHRISTIANSE	1,400.00	1,400.00	189.74	132.96	3.342	CC
CHRISTIANSEN 12-9 EXISTING WELL - CHRISTIANSE	1,600.00	1,599.84	193.10	127.98	2.966	ES
CHRISTIANSEN 12-9 EXISTING WELL - CHRISTIANSE	1,900.00	1,897.47	213.57	136.31	2.764	SF
CHRISTIANSEN 4-9 EXISTING WELL - CHRISTIANSEN	1,400.00	1,400.00	198.14	192.10	32.813	CC, ES
CHRISTIANSEN 4-9 EXISTING WELL - CHRISTIANSEN	1,800.00	1,786.52	216.81	209.17	28.388	SF
P_TALON VIEW 12-9 - P_TALON VIEW 12-9 - PLAN #1	1,400.00	1,400.00	14.58	8.54	2.416	CC
P_TALON VIEW 12-9 - P_TALON VIEW 12-9 - PLAN #1	1,500.00	1,499.51	14.63	8.20	2.276	ES
P_TALON VIEW 12-9 - P_TALON VIEW 12-9 - PLAN #1	1,600.00	1,598.93	15.35	8.59	2.269	SF
P_TALON VIEW 21-9 - P_TALON VIEW 21-9 - PLAN #1	1,400.00	1,400.00	29.13	23.09	4.826	CC, ES
P_TALON VIEW 21-9 - P_TALON VIEW 21-9 - PLAN #1	1,500.00	1,499.80	31.04	24.60	4.818	SF
P_TALON VIEW 22-9 - P_TALON VIEW 22-9 - PLAN #1	1,400.00	1,400.00	29.17	23.13	4.833	CC
P_TALON VIEW 22-9 - P_TALON VIEW 22-9 - PLAN #1	1,500.00	1,498.99	29.27	22.84	4.557	ES
P_TALON VIEW 22-9 - P_TALON VIEW 22-9 - PLAN #1	1,700.00	1,696.89	30.48	23.37	4.287	SF
P_TALON VIEW 3-9 - P_TALON VIEW 3-9 - PLAN #1 0	1,400.00	1,400.00	43.70	37.67	7.242	CC, ES
P_TALON VIEW 3-9 - P_TALON VIEW 3-9 - PLAN #1 0	1,500.00	1,498.73	46.69	40.24	7.241	SF
P_TALON VIEW 5-9 - P_TALON VIEW 5-9 - PLAN #1 0	1,400.00	1,400.00	58.27	52.24	9.656	CC, ES
P_TALON VIEW 5-9 - P_TALON VIEW 5-9 - PLAN #1 0	1,600.00	1,602.18	60.99	54.21	8.989	SF
P_TALON VIEW 6-9 - P_TALON VIEW 6-9 - PLAN #1 0	1,400.00	1,400.00	14.56	8.52	2.412	CC, ES
P_TALON VIEW 6-9 - P_TALON VIEW 6-9 - PLAN #1 0	1,500.00	1,500.28	15.21	8.78	2.364	SF

Offset Design													Offset Site Error:	0.00 ft
Survey Program: 0-UNKNOWN													Offset Well Error:	0.00 ft
Reference	Offset		Semi Major Axis			Distance				Minimum Separation		Warning		
Measured Depth (ft)	Vertical Depth (ft)	Measured Depth (ft)	Vertical Depth (ft)	Reference (ft)	Offset (ft)	Highside Toolface (°)	Offset Wellbore Centre +N/-S (ft)	+E/-W (ft)	Between Centres (ft)	Between Ellipses (ft)	Separation (ft)	Factor		
0.00	0.00	0.00	0.00	0.00	0.00	-82.83	23.68	-188.25	189.74					
100.00	100.00	100.00	100.00	0.10	1.76	-82.83	23.68	-188.25	189.74	187.88	1.86	102.255		
200.00	200.00	200.00	200.00	0.32	5.76	-82.83	23.68	-188.25	189.74	183.66	6.08	31.205		
300.00	300.00	300.00	300.00	0.55	9.76	-82.83	23.68	-188.25	189.74	179.43	10.31	18.412		
400.00	400.00	400.00	400.00	0.77	13.76	-82.83	23.68	-188.25	189.74	175.21	14.53	13.058		
500.00	500.00	500.00	500.00	0.99	17.76	-82.83	23.68	-188.25	189.74	170.98	18.75	10.117		
600.00	600.00	600.00	600.00	1.22	21.76	-82.83	23.68	-188.25	189.74	166.76	22.98	8.257		
700.00	700.00	700.00	700.00	1.44	25.76	-82.83	23.68	-188.25	189.74	162.53	27.20	6.975		
800.00	800.00	800.00	800.00	1.67	29.76	-82.83	23.68	-188.25	189.74	158.31	31.43	6.037		

CC - Min centre to center distance or convergent point, SF - min separation factor, ES - min ellipse separation



<b>Company:</b>	US ROCKIES REGION PLANNING	<b>Local Co-ordinate Reference:</b>	Well P_TALON VIEW 11-9
<b>Project:</b>	KERR MCGEE OIL & GAS ONSHORE LP	<b>TVD Reference:</b>	WELL @ 5171.00ft (Original Well Elev)
<b>Reference Site:</b>	ADAMS_TALON VIEW 7 PAD	<b>MD Reference:</b>	WELL @ 5171.00ft (Original Well Elev)
<b>Site Error:</b>	0.00ft	<b>North Reference:</b>	True
<b>Reference Well:</b>	P_TALON VIEW 11-9	<b>Survey Calculation Method:</b>	Minimum Curvature
<b>Well Error:</b>	0.00ft	<b>Output errors are at</b>	2.00 sigma
<b>Reference Wellbore</b>	P_TALON VIEW 11-9	<b>Database:</b>	EDM 2003.21 Single User Db
<b>Reference Design:</b>	PLAN #1 09-01-09 RHS	<b>Offset TVD Reference:</b>	Offset Datum

Offset Design													ADAMS_TALON VIEW 7 PAD - CHRISTIANSEN 12-9 EXISTING WELL - CHRISTIANSEN 12-9 EXISTI	Offset Site Error:	0.00 ft
Survey Program: 0-UNKNOWN														Offset Well Error:	0.00 ft
Reference		Offset		Semi Major Axis			Distance						Warning		
Measured Depth (ft)	Vertical Depth (ft)	Measured Depth (ft)	Vertical Depth (ft)	Reference (ft)	Offset (ft)	Highside Tooface (°)	Offset Wellbore Centre +N/-S (ft)	+E/-W (ft)	Between Centres (ft)	Between Ellipses (ft)	Minimum Separation (ft)	Separation Factor			
900.00	900.00	900.00	900.00	1.89	33.76	-82.83	23.68	-188.25	189.74	154.08	35.65	5.322			
1,000.00	1,000.00	1,000.00	1,000.00	2.12	37.76	-82.83	23.68	-188.25	189.74	149.86	39.88	4.758			
1,100.00	1,100.00	1,100.00	1,100.00	2.34	41.76	-82.83	23.68	-188.25	189.74	145.63	44.10	4.302			
1,200.00	1,200.00	1,200.00	1,200.00	2.57	45.76	-82.83	23.68	-188.25	189.74	141.41	48.33	3.926			
1,300.00	1,300.00	1,300.00	1,300.00	2.79	49.76	-82.83	23.68	-188.25	189.74	137.18	52.55	3.610			
1,400.00	1,400.00	1,400.00	1,400.00	3.02	53.76	-82.83	23.68	-188.25	189.74	132.96	56.78	3.342 CC			
1,500.00	1,499.98	1,499.98	1,499.98	3.21	57.76	118.30	23.68	-188.25	190.56	129.59	60.97	3.125			
1,600.00	1,599.84	1,599.84	1,599.84	3.39	61.75	119.62	23.68	-188.25	193.10	127.98	65.11	2.966 ES			
1,700.00	1,699.45	1,699.45	1,699.45	3.58	65.74	121.74	23.68	-188.25	197.56	128.33	69.23	2.854			
1,800.00	1,798.70	1,798.70	1,798.70	3.78	69.71	124.52	23.68	-188.25	204.26	130.97	73.28	2.787			
1,900.00	1,897.47	1,897.47	1,897.47	4.02	73.66	127.81	23.68	-188.25	213.57	136.31	77.26	2.764 SF			
2,000.00	1,995.62	1,995.62	1,995.62	4.29	77.58	131.41	23.68	-188.25	225.87	144.76	81.11	2.785			
2,100.00	2,093.06	2,093.06	2,093.06	4.60	81.48	135.14	23.68	-188.25	241.51	156.71	84.80	2.848			
2,200.00	2,189.64	2,189.64	2,189.64	4.97	85.35	138.84	23.68	-188.25	260.75	172.46	88.29	2.953			
2,300.00	2,285.27	2,285.27	2,285.27	5.40	89.17	142.38	23.68	-188.25	283.76	192.20	91.56	3.099			
2,400.00	2,379.82	2,379.82	2,379.82	5.90	92.95	145.67	23.68	-188.25	310.61	216.04	94.57	3.284			
2,500.00	2,473.17	2,473.17	2,473.17	6.47	96.69	148.67	23.68	-188.25	341.32	244.00	97.32	3.507			
2,600.00	2,565.21	2,565.21	2,565.21	7.10	100.37	151.37	23.68	-188.25	375.84	276.04	99.80	3.766			
2,614.53	2,578.47	2,578.47	2,578.47	7.20	100.90	151.73	23.68	-188.25	381.16	281.03	100.13	3.807			
2,700.00	2,656.38	2,656.38	2,656.38	7.80	104.02	154.00	23.68	-188.25	413.02	310.01	103.01	4.009			
2,800.00	2,747.52	2,747.52	2,747.52	8.52	107.66	156.26	23.68	-188.25	450.92	344.49	106.43	4.237			
2,900.00	2,838.67	2,838.67	2,838.67	9.26	111.31	158.18	23.68	-188.25	489.35	379.46	109.89	4.453			
3,000.00	2,929.82	2,929.82	2,929.82	10.01	114.95	159.82	23.68	-188.25	528.18	414.80	113.38	4.658			
3,100.00	3,020.97	3,020.97	3,020.97	10.77	118.60	161.24	23.68	-188.25	567.34	450.43	116.90	4.853			
3,200.00	3,112.11	3,112.11	3,112.11	11.55	122.24	162.48	23.68	-188.25	606.76	486.31	120.44	5.038			
3,300.00	3,203.26	3,203.26	3,203.26	12.33	125.89	163.57	23.68	-188.25	646.39	522.39	124.00	5.213			
3,400.00	3,294.41	3,294.41	3,294.41	13.12	129.54	164.54	23.68	-188.25	686.20	558.62	127.57	5.379			
3,500.00	3,385.55	3,385.55	3,385.55	13.91	133.18	165.40	23.68	-188.25	726.16	595.00	131.16	5.536			
3,600.00	3,476.70	3,476.70	3,476.70	14.71	136.83	166.17	23.68	-188.25	766.24	631.48	134.76	5.686			
3,700.00	3,567.85	3,567.85	3,567.85	15.51	140.47	166.87	23.68	-188.25	806.43	668.07	138.36	5.828			
3,800.00	3,658.99	3,658.99	3,658.99	16.31	144.12	167.50	23.68	-188.25	846.71	704.73	141.98	5.964			
3,900.00	3,750.14	3,750.14	3,750.14	17.12	147.77	168.07	23.68	-188.25	887.07	741.47	145.60	6.093			
4,000.00	3,841.29	3,841.29	3,841.29	17.93	151.41	168.59	23.68	-188.25	927.49	778.27	149.22	6.216			
4,100.00	3,932.44	3,932.44	3,932.44	18.74	155.06	169.07	23.68	-188.25	967.98	815.13	152.85	6.333			
4,200.00	4,023.58	4,023.58	4,023.58	19.55	158.70	169.51	23.68	-188.25	1,008.52	852.03	156.49	6.445			
4,300.00	4,114.73	4,114.73	4,114.73	20.37	162.35	169.92	23.68	-188.25	1,049.10	888.97	160.13	6.552			
4,400.00	4,205.88	4,205.88	4,205.88	21.18	166.00	170.30	23.68	-188.25	1,089.73	925.96	163.77	6.654			
4,500.00	4,297.02	4,297.02	4,297.02	22.00	169.64	170.65	23.68	-188.25	1,130.40	962.97	167.42	6.752			
4,600.00	4,388.17	4,388.17	4,388.17	22.82	173.29	170.98	23.68	-188.25	1,171.09	1,000.02	171.07	6.846			
4,700.00	4,479.32	4,479.32	4,479.32	23.64	176.93	171.28	23.68	-188.25	1,211.82	1,037.10	174.72	6.936			
4,800.00	4,570.47	4,570.47	4,570.47	24.46	180.58	171.57	23.68	-188.25	1,252.57	1,074.19	178.38	7.022			
4,900.00	4,661.61	4,661.61	4,661.61	25.28	184.22	171.83	23.68	-188.25	1,293.35	1,111.31	182.04	7.105			
5,000.00	4,752.76	4,752.76	4,752.76	26.10	187.87	172.08	23.68	-188.25	1,334.15	1,148.45	185.70	7.185			
5,100.00	4,843.91	4,843.91	4,843.91	26.93	191.52	172.32	23.68	-188.25	1,374.97	1,185.61	189.36	7.261			
5,200.00	4,935.05	4,935.05	4,935.05	27.75	195.16	172.54	23.68	-188.25	1,415.81	1,222.79	193.02	7.335			
5,300.00	5,026.20	5,026.20	5,026.20	28.57	198.81	172.75	23.68	-188.25	1,456.66	1,259.98	196.68	7.406			
5,400.00	5,117.35	5,117.35	5,117.35	29.40	202.45	172.95	23.68	-188.25	1,497.53	1,297.18	200.35	7.475			
5,500.00	5,208.50	5,208.50	5,208.50	30.22	206.10	173.14	23.68	-188.25	1,538.42	1,334.40	204.02	7.541			
5,600.00	5,299.64	5,299.64	5,299.64	31.05	209.75	173.32	23.68	-188.25	1,579.31	1,371.63	207.69	7.604			
5,700.00	5,390.79	5,390.79	5,390.79	31.87	213.39	173.48	23.68	-188.25	1,620.22	1,408.87	211.35	7.666			
5,800.00	5,481.94	5,481.94	5,481.94	32.70	217.04	173.65	23.68	-188.25	1,661.14	1,446.12	215.03	7.725			
5,900.00	5,573.08	5,573.08	5,573.08	33.52	220.68	173.80	23.68	-188.25	1,702.08	1,483.38	218.70	7.783			

CC - Min centre to center distance or convergent point, SF - min separation factor, ES - min ellipse separation



<b>Company:</b>	US ROCKIES REGION PLANNING	<b>Local Co-ordinate Reference:</b>	Well P_TALON VIEW 11-9
<b>Project:</b>	KERR MCGEE OIL & GAS ONSHORE LP	<b>TVD Reference:</b>	WELL @ 5171.00ft (Original Well Elev)
<b>Reference Site:</b>	ADAMS_TALON VIEW 7 PAD	<b>MD Reference:</b>	WELL @ 5171.00ft (Original Well Elev)
<b>Site Error:</b>	0.00ft	<b>North Reference:</b>	True
<b>Reference Well:</b>	P_TALON VIEW 11-9	<b>Survey Calculation Method:</b>	Minimum Curvature
<b>Well Error:</b>	0.00ft	<b>Output errors are at</b>	2.00 sigma
<b>Reference Wellbore</b>	P_TALON VIEW 11-9	<b>Database:</b>	EDM 2003.21 Single User Db
<b>Reference Design:</b>	PLAN #1 09-01-09 RHS	<b>Offset TVD Reference:</b>	Offset Datum

Offset Design												ADAMS_TALON VIEW 7 PAD - CHRISTIANSEN 12-9 EXISTING WELL - CHRISTIANSEN 12-9 EXISTI	Offset Site Error:	0.00 ft
Survey Program: 0-UNKNOWN													Offset Well Error:	0.00 ft
Reference		Offset		Semi Major Axis			Distance					Warning		
Measured Depth (ft)	Vertical Depth (ft)	Measured Depth (ft)	Vertical Depth (ft)	Reference (ft)	Offset (ft)	Highside Toolface (°)	Offset Wellbore Centre +N/-S (ft)	+E/-W (ft)	Between Centres (ft)	Between Ellipses (ft)	Minimum Separation (ft)		Separation Factor	
5,953.15	5,621.53	5,621.53	5,621.53	33.96	222.62	173.88	23.68	-188.25	1,723.83	1,503.19	220.65	7.813		
6,000.00	5,664.39	5,664.39	5,664.39	34.29	224.34	173.99	23.68	-188.25	1,742.67	1,518.90	223.77	7.788		
6,100.00	5,756.87	5,756.87	5,756.87	34.87	228.03	174.20	23.68	-188.25	1,780.53	1,550.21	230.31	7.731		
6,200.00	5,850.62	5,850.62	5,850.62	35.40	231.78	174.38	23.68	-188.25	1,815.15	1,578.44	236.71	7.668		
6,300.00	5,945.53	5,945.53	5,945.53	35.90	235.58	174.54	23.68	-188.25	1,846.51	1,603.41	243.10	7.596		
6,400.00	6,041.48	6,041.48	6,041.48	36.35	239.42	174.68	23.68	-188.25	1,874.55	1,625.23	249.32	7.519		
6,500.00	6,138.35	6,138.35	6,138.35	36.75	243.29	174.79	23.68	-188.25	1,899.24	1,643.90	255.34	7.438		
6,600.00	6,236.03	6,236.03	6,236.03	37.11	247.20	174.89	23.68	-188.25	1,920.55	1,659.42	261.13	7.355		
6,700.00	6,334.40	6,334.40	6,334.40	37.42	251.14	174.97	23.68	-188.25	1,938.45	1,671.78	266.67	7.269		
6,800.00	6,433.33	6,433.33	6,433.33	37.69	255.09	175.03	23.68	-188.25	1,952.93	1,680.98	271.94	7.181		
6,900.00	6,532.71	6,532.71	6,532.71	37.91	259.07	175.08	23.68	-188.25	1,963.95	1,687.02	276.93	7.092		
7,000.00	6,632.42	6,632.42	6,632.42	38.08	263.06	175.11	23.68	-188.25	1,971.51	1,689.91	281.60	7.001		
7,100.00	6,732.33	6,732.33	6,732.33	38.20	267.05	175.13	23.68	-188.25	1,975.61	1,689.66	285.95	6.909		
7,167.68	6,800.00	6,800.00	6,800.00	38.27	269.76	-25.55	23.68	-188.25	1,976.40	1,687.71	288.69	6.846		
7,200.00	6,832.32	6,832.32	6,832.32	38.29	271.05	-25.55	23.68	-188.25	1,976.40	1,686.37	290.03	6.814		
7,300.00	6,932.32	6,932.32	6,932.32	38.36	275.05	-25.55	23.68	-188.25	1,976.40	1,682.22	294.18	6.718		
7,400.00	7,032.32	7,032.32	7,032.32	38.44	279.05	-25.55	23.68	-188.25	1,976.40	1,678.08	298.32	6.625		
7,500.00	7,132.32	7,132.32	7,132.32	38.51	283.05	-25.55	23.68	-188.25	1,976.40	1,673.93	302.47	6.534		
7,600.00	7,232.32	7,232.32	7,232.32	38.59	287.05	-25.55	23.68	-188.25	1,976.40	1,669.78	306.62	6.446		
7,700.00	7,332.32	7,332.32	7,332.32	38.66	291.05	-25.55	23.68	-188.25	1,976.40	1,665.63	310.77	6.360		
7,800.00	7,432.32	7,432.32	7,432.32	38.74	295.05	-25.55	23.68	-188.25	1,976.40	1,661.48	314.92	6.276		
7,900.00	7,532.32	7,532.32	7,532.32	38.82	299.05	-25.55	23.68	-188.25	1,976.40	1,657.33	319.08	6.194		
8,000.00	7,632.32	7,632.32	7,632.32	38.90	303.05	-25.55	23.68	-188.25	1,976.40	1,653.17	323.23	6.115		
8,100.00	7,732.32	7,732.32	7,732.32	38.98	307.05	-25.55	23.68	-188.25	1,976.40	1,649.02	327.39	6.037		
8,200.00	7,832.32	7,832.32	7,832.32	39.06	311.05	-25.55	23.68	-188.25	1,976.40	1,644.86	331.54	5.961		
8,300.00	7,932.32	7,932.32	7,932.32	39.15	315.05	-25.55	23.68	-188.25	1,976.40	1,640.70	335.70	5.887		
8,400.00	8,032.32	8,032.32	8,032.32	39.23	319.05	-25.55	23.68	-188.25	1,976.40	1,636.54	339.86	5.815		
8,500.00	8,132.32	8,132.32	8,132.32	39.32	323.05	-25.55	23.68	-188.25	1,976.40	1,632.38	344.02	5.745		
8,600.00	8,232.32	8,232.32	8,232.32	39.40	327.05	-25.55	23.68	-188.25	1,976.40	1,628.22	348.18	5.676		
8,700.00	8,332.32	8,332.32	8,332.32	39.49	331.05	-25.55	23.68	-188.25	1,976.40	1,624.06	352.35	5.609		
8,800.00	8,432.32	8,432.32	8,432.32	39.58	335.05	-25.55	23.68	-188.25	1,976.40	1,619.89	356.51	5.544		
8,865.68	8,498.00	8,498.00	8,498.00	39.64	337.68	-25.55	23.68	-188.25	1,976.40	1,617.16	359.25	5.502		



<b>Company:</b>	US ROCKIES REGION PLANNING	<b>Local Co-ordinate Reference:</b>	Well P_TALON VIEW 11-9
<b>Project:</b>	KERR MCGEE OIL & GAS ONSHORE LP	<b>TVD Reference:</b>	WELL @ 5171.00ft (Original Well Elev)
<b>Reference Site:</b>	ADAMS_TALON VIEW 7 PAD	<b>MD Reference:</b>	WELL @ 5171.00ft (Original Well Elev)
<b>Site Error:</b>	0.00ft	<b>North Reference:</b>	True
<b>Reference Well:</b>	P_TALON VIEW 11-9	<b>Survey Calculation Method:</b>	Minimum Curvature
<b>Well Error:</b>	0.00ft	<b>Output errors are at</b>	2.00 sigma
<b>Reference Wellbore</b>	P_TALON VIEW 11-9	<b>Database:</b>	EDM 2003.21 Single User Db
<b>Reference Design:</b>	PLAN #1 09-01-09 RHS	<b>Offset TVD Reference:</b>	Offset Datum

Offset Design													ADAMS_TALON VIEW 7 PAD - CHRISTIANSEN 4-9 EXISTING WELL - CHRISTIANSEN 4-9 EXISTING	Offset Site Error:	0.00 ft
Survey Program: 0-MWD														Offset Well Error:	0.00 ft
Reference		Offset		Semi Major Axis			Distance						Warning		
Measured Depth (ft)	Vertical Depth (ft)	Measured Depth (ft)	Vertical Depth (ft)	Reference (ft)	Offset (ft)	Highside Toolface (°)	Offset Wellbore Centre +N/-S (ft)	+E/-W (ft)	Between Centres (ft)	Between Ellipses (ft)	Minimum Separation (ft)	Separation Factor			
0.00	0.00	0.00	0.00	0.00	0.00	-92.73	-9.44	-197.91	198.14						
100.00	100.00	100.00	100.00	0.10	0.10	-92.73	-9.44	-197.91	198.14	197.94	0.19	1,019.111			
200.00	200.00	200.00	200.00	0.32	0.32	-92.73	-9.44	-197.91	198.14	197.49	0.64	307.690			
300.00	300.00	300.00	300.00	0.55	0.55	-92.73	-9.44	-197.91	198.14	197.04	1.09	181.199			
400.00	400.00	400.00	400.00	0.77	0.77	-92.73	-9.44	-197.91	198.14	196.60	1.54	128.410			
500.00	500.00	500.00	500.00	0.99	1.00	-92.73	-9.44	-197.91	198.14	196.15	1.99	99.440			
600.00	600.00	600.00	600.00	1.22	1.22	-92.73	-9.44	-197.91	198.14	195.70	2.44	81.135			
700.00	700.00	700.00	700.00	1.44	1.45	-92.73	-9.44	-197.91	198.14	195.25	2.89	68.522			
800.00	800.00	800.00	800.00	1.67	1.67	-92.73	-9.44	-197.91	198.14	194.80	3.34	59.302			
900.00	900.00	900.00	900.00	1.89	1.90	-92.73	-9.44	-197.91	198.14	194.35	3.79	52.270			
1,000.00	1,000.00	1,000.00	1,000.00	2.12	2.12	-92.73	-9.44	-197.91	198.14	193.90	4.24	46.728			
1,100.00	1,100.00	1,100.00	1,100.00	2.34	2.35	-92.73	-9.44	-197.91	198.14	193.45	4.69	42.249			
1,200.00	1,200.00	1,200.00	1,200.00	2.57	2.57	-92.73	-9.44	-197.91	198.14	193.00	5.14	38.554			
1,300.00	1,300.00	1,300.00	1,300.00	2.79	2.80	-92.73	-9.44	-197.91	198.14	192.55	5.59	35.453			
1,400.00	1,400.00	1,400.00	1,400.00	3.02	3.02	-92.73	-9.44	-197.91	198.14	192.10	6.04	32.813 CC, ES			
1,500.00	1,499.98	1,499.98	1,499.98	3.21	3.25	108.42	-9.44	-197.91	198.68	192.22	6.46	30.761			
1,600.00	1,599.84	1,596.73	1,596.71	3.39	3.46	110.16	-7.99	-198.68	201.17	194.32	6.85	29.384			
1,700.00	1,699.45	1,692.45	1,692.31	3.58	3.68	113.41	-3.72	-200.93	206.89	199.65	7.24	28.585			
1,800.00	1,798.70	1,786.52	1,786.05	3.78	3.89	117.82	3.22	-204.60	216.81	209.17	7.64	28.388 SF			
1,900.00	1,897.47	1,878.34	1,877.24	4.02	4.11	122.88	12.62	-209.57	232.06	224.02	8.05	28.845			
2,000.00	1,995.62	1,967.36	1,965.29	4.29	4.33	128.11	24.19	-215.69	253.61	245.15	8.46	29.987			
2,100.00	2,093.06	2,053.12	2,049.69	4.60	4.57	133.09	37.63	-222.79	282.05	273.19	8.87	31.809			
2,200.00	2,189.64	2,135.23	2,130.04	4.97	4.82	137.58	52.57	-230.69	317.57	308.30	9.27	34.259			
2,300.00	2,285.27	2,213.38	2,206.03	5.40	5.07	141.44	68.69	-239.20	359.98	350.32	9.66	37.262			
2,400.00	2,379.82	2,288.94	2,279.02	5.90	5.35	144.76	85.97	-248.34	408.87	398.82	10.05	40.702			
2,500.00	2,473.17	2,369.40	2,356.55	6.47	5.67	147.83	104.98	-258.39	462.55	452.12	10.43	44.333			
2,600.00	2,565.21	2,447.74	2,432.04	7.10	6.00	150.35	123.49	-268.17	519.99	509.18	10.81	48.085			
2,614.53	2,578.47	2,458.94	2,442.83	7.20	6.05	150.68	126.14	-269.57	528.63	517.76	10.87	48.637			
2,700.00	2,656.38	2,524.69	2,506.19	7.80	6.33	152.99	141.67	-277.78	579.99	568.74	11.25	51.558			
2,800.00	2,747.52	2,601.61	2,580.31	8.52	6.67	155.25	159.85	-287.39	640.77	629.07	11.70	54.767			
2,900.00	2,838.67	2,678.54	2,654.44	9.26	7.02	157.14	178.02	-296.99	702.10	689.95	12.16	57.747			
3,000.00	2,929.82	2,755.46	2,728.57	10.01	7.38	158.73	196.20	-306.60	763.86	751.23	12.62	60.520			
3,100.00	3,020.97	2,832.39	2,802.70	10.77	7.75	160.10	214.37	-316.20	825.93	812.84	13.09	63.099			
3,200.00	3,112.11	2,909.31	2,876.82	11.55	8.12	161.28	232.55	-325.81	888.27	874.71	13.56	65.495			
3,300.00	3,203.26	2,986.24	2,950.95	12.33	8.49	162.31	250.72	-335.42	950.81	936.77	14.04	67.720			
3,400.00	3,294.41	3,063.16	3,025.08	13.12	8.87	163.21	268.90	-345.02	1,013.52	999.00	14.52	69.787			
3,500.00	3,385.55	3,140.09	3,099.20	13.91	9.26	164.02	287.07	-354.63	1,076.37	1,061.37	15.01	71.714			
3,600.00	3,476.70	3,217.01	3,173.33	14.71	9.65	164.73	305.25	-364.24	1,139.34	1,123.84	15.50	73.510			
3,700.00	3,567.85	3,293.94	3,247.46	15.51	10.04	165.37	323.42	-373.84	1,202.41	1,186.41	15.99	75.186			
3,800.00	3,658.99	3,370.86	3,321.59	16.31	10.43	165.95	341.59	-383.45	1,265.55	1,249.06	16.49	76.750			
3,900.00	3,750.14	3,447.79	3,395.71	17.12	10.83	166.48	359.77	-393.05	1,328.77	1,311.78	16.99	78.214			
4,000.00	3,841.29	3,524.71	3,469.84	17.93	11.22	166.95	377.94	-402.66	1,392.05	1,374.56	17.49	79.587			
4,100.00	3,932.44	3,601.64	3,543.97	18.74	11.62	167.39	396.12	-412.27	1,455.39	1,437.39	18.00	80.874			
4,200.00	4,023.58	3,678.56	3,618.10	19.55	12.02	167.79	414.29	-421.87	1,518.77	1,500.27	18.50	82.082			
4,300.00	4,114.73	3,755.49	3,692.22	20.37	12.43	168.16	432.47	-431.48	1,582.19	1,563.18	19.01	83.219			
4,400.00	4,205.88	3,832.41	3,766.35	21.18	12.83	168.50	450.64	-441.08	1,645.65	1,626.13	19.52	84.290			
4,500.00	4,297.02	3,909.34	3,840.48	22.00	13.23	168.82	468.82	-450.69	1,709.14	1,689.11	20.04	85.301			
4,600.00	4,388.17	3,986.26	3,914.60	22.82	13.64	169.11	486.99	-460.30	1,772.67	1,752.11	20.55	86.254			
4,700.00	4,479.32	4,063.19	3,988.73	23.64	14.05	169.38	505.17	-469.90	1,836.21	1,815.14	21.07	87.155			
4,800.00	4,570.47	4,140.11	4,062.86	24.46	14.46	169.64	523.34	-479.51	1,899.78	1,878.20	21.59	88.008			
4,900.00	4,661.61	4,217.04	4,136.99	25.28	14.87	169.88	541.52	-489.11	1,963.37	1,941.27	22.11	88.817			
5,000.00	4,752.76	4,293.96	4,211.11	26.10	15.27	170.10	559.69	-498.72	2,026.98	2,004.36	22.63	89.585			

CC - Min centre to center distance or convergent point, SF - min separation factor, ES - min ellipse separation



<b>Company:</b>	US ROCKIES REGION PLANNING	<b>Local Co-ordinate Reference:</b>	Well P_TALON VIEW 11-9
<b>Project:</b>	KERR MCGEE OIL & GAS ONSHORE LP	<b>TVD Reference:</b>	WELL @ 5171.00ft (Original Well Elev)
<b>Reference Site:</b>	ADAMS_TALON VIEW 7 PAD	<b>MD Reference:</b>	WELL @ 5171.00ft (Original Well Elev)
<b>Site Error:</b>	0.00ft	<b>North Reference:</b>	True
<b>Reference Well:</b>	P_TALON VIEW 11-9	<b>Survey Calculation Method:</b>	Minimum Curvature
<b>Well Error:</b>	0.00ft	<b>Output errors are at</b>	2.00 sigma
<b>Reference Wellbore</b>	P_TALON VIEW 11-9	<b>Database:</b>	EDM 2003.21 Single User Db
<b>Reference Design:</b>	PLAN #1 09-01-09 RHS	<b>Offset TVD Reference:</b>	Offset Datum

Offset Design													ADAMS_TALON VIEW 7 PAD - CHRISTIANSEN 4-9 EXISTING WELL - CHRISTIANSEN 4-9 EXISTING	Offset Site Error:	0.00 ft
Survey Program: 0-MWD														Offset Well Error:	0.00 ft
Reference		Offset		Semi Major Axis			Distance						Warning		
Measured Depth (ft)	Vertical Depth (ft)	Measured Depth (ft)	Vertical Depth (ft)	Reference (ft)	Offset (ft)	Highside Toolface (°)	Offset Wellbore Centre +N/-S (ft)	+E/-W (ft)	Between Centres (ft)	Between Ellipses (ft)	Minimum Separation (ft)	Separation Factor			
5,100.00	4,843.91	4,370.89	4,285.24	26.93	15.69	170.31	577.87	-508.33	2,090.61	2,067.46	23.15	90.313			
5,200.00	4,935.05	4,447.81	4,359.37	27.75	16.10	170.51	596.04	-517.93	2,154.26	2,130.58	23.67	91.005			
5,300.00	5,026.20	4,524.74	4,433.50	28.57	16.51	170.69	614.22	-527.54	2,217.91	2,193.72	24.20	91.665			
5,400.00	5,117.35	4,601.66	4,507.62	29.40	16.92	170.87	632.39	-537.15	2,281.58	2,256.86	24.72	92.293			
5,500.00	5,208.50	4,678.59	4,581.75	30.22	17.33	171.04	650.57	-546.75	2,345.27	2,320.02	25.25	92.891			
5,600.00	5,299.64	4,755.51	4,655.88	31.05	17.75	171.19	668.74	-556.36	2,408.96	2,383.19	25.77	93.463			
5,700.00	5,390.79	4,832.44	4,730.01	31.87	18.16	171.34	686.92	-565.96	2,472.67	2,446.36	26.30	94.008			
5,800.00	5,481.94	4,909.36	4,804.13	32.70	18.58	171.48	705.09	-575.57	2,536.38	2,509.55	26.83	94.531			
5,900.00	5,573.08	4,986.29	4,878.26	33.52	18.99	171.62	723.27	-585.18	2,600.10	2,572.74	27.36	95.030			
5,953.15	5,621.53	5,027.17	4,917.66	33.96	19.21	171.69	732.93	-590.28	2,633.98	2,606.33	27.64	95.287			
6,000.00	5,664.39	5,063.45	4,952.62	34.29	19.41	171.86	741.50	-594.81	2,663.54	2,635.55	27.99	95.148			
6,100.00	5,756.87	5,142.49	5,028.78	34.87	19.84	172.18	760.17	-604.68	2,724.66	2,695.95	28.71	94.900			
6,200.00	5,850.62	5,911.45	5,786.14	35.40	22.21	173.11	865.88	-660.55	2,780.44	2,749.88	30.56	90.969			
6,300.00	5,945.53	6,070.85	5,945.53	35.90	22.40	173.32	866.56	-660.91	2,811.76	2,780.43	31.33	89.755			
6,400.00	6,041.48	6,166.80	6,041.48	36.35	22.52	173.45	866.56	-660.91	2,839.74	2,807.78	31.96	88.855			
6,500.00	6,138.35	6,263.67	6,138.35	36.75	22.65	173.57	866.56	-660.91	2,864.38	2,831.83	32.55	88.008			
6,600.00	6,236.03	6,361.35	6,236.03	37.11	22.77	173.66	866.56	-660.91	2,885.65	2,852.56	33.09	87.212			
6,700.00	6,334.40	6,459.72	6,334.40	37.42	22.90	173.74	866.56	-660.91	2,903.51	2,869.93	33.58	86.464			
6,800.00	6,433.33	6,558.65	6,433.33	37.69	23.03	173.81	866.56	-660.91	2,917.96	2,883.93	34.02	85.763			
6,900.00	6,532.71	6,658.03	6,532.71	37.91	23.16	173.85	866.56	-660.91	2,928.96	2,894.54	34.42	85.107			
7,000.00	6,632.42	6,757.74	6,632.42	38.08	23.30	173.89	866.56	-660.91	2,936.51	2,901.75	34.75	84.492			
7,100.00	6,732.33	6,857.65	6,732.33	38.20	23.43	173.90	866.56	-660.91	2,940.59	2,905.55	35.04	83.918			
7,167.68	6,800.00	6,925.32	6,800.00	38.27	23.52	-26.78	866.56	-660.91	2,941.38	2,906.18	35.21	83.542			
7,200.00	6,832.32	6,957.64	6,832.32	38.29	23.57	-26.78	866.56	-660.91	2,941.38	2,906.06	35.32	83.277			
7,300.00	6,932.32	7,057.64	6,932.32	38.36	23.71	-26.78	866.56	-660.91	2,941.38	2,905.72	35.66	82.474			
7,400.00	7,032.32	7,157.64	7,032.32	38.44	23.85	-26.78	866.56	-660.91	2,941.38	2,905.37	36.01	81.681			
7,500.00	7,132.32	7,257.64	7,132.32	38.51	23.99	-26.78	866.56	-660.91	2,941.38	2,905.03	36.36	80.899			
7,600.00	7,232.32	7,357.64	7,232.32	38.59	24.13	-26.78	866.56	-660.91	2,941.38	2,904.68	36.71	80.128			
7,700.00	7,332.32	7,457.64	7,332.32	38.66	24.28	-26.78	866.56	-660.91	2,941.38	2,904.32	37.06	79.367			
7,800.00	7,432.32	7,557.64	7,432.32	38.74	24.42	-26.78	866.56	-660.91	2,941.38	2,903.97	37.41	78.615			
7,850.75	7,483.07	7,608.39	7,483.07	38.78	24.49	-26.78	866.56	-660.91	2,941.38	2,903.79	37.60	78.238			
7,900.00	7,532.32	7,625.32	7,500.00	38.82	24.52	-26.78	866.56	-660.91	2,941.56	2,903.86	37.70	78.016			
8,000.00	7,632.32	7,625.32	7,500.00	38.90	24.52	-26.78	866.56	-660.91	2,944.36	2,906.50	37.86	77.773			
8,100.00	7,732.32	7,625.32	7,500.00	38.98	24.52	-26.78	866.56	-660.91	2,950.54	2,912.53	38.01	77.620			
8,200.00	7,832.32	7,625.32	7,500.00	39.06	24.52	-26.78	866.56	-660.91	2,960.10	2,921.93	38.17	77.553			
8,300.00	7,932.32	7,625.32	7,500.00	39.15	24.52	-26.78	866.56	-660.91	2,972.99	2,934.66	38.33	77.571			
8,400.00	8,032.32	7,625.32	7,500.00	39.23	24.52	-26.78	866.56	-660.91	2,989.16	2,950.68	38.48	77.671			
8,500.00	8,132.32	7,625.32	7,500.00	39.32	24.52	-26.78	866.56	-660.91	3,008.58	2,969.94	38.64	77.853			
8,600.00	8,232.32	7,625.32	7,500.00	39.40	24.52	-26.78	866.56	-660.91	3,031.18	2,992.37	38.81	78.112			
8,700.00	8,332.32	7,625.32	7,500.00	39.49	24.52	-26.78	866.56	-660.91	3,056.88	3,017.91	38.97	78.447			
8,800.00	8,432.32	7,625.32	7,500.00	39.58	24.52	-26.78	866.56	-660.91	3,085.61	3,046.48	39.13	78.854			
8,865.68	8,498.00	7,625.32	7,500.00	39.64	24.52	-26.78	866.56	-660.91	3,106.08	3,066.84	39.24	79.159			



<b>Company:</b>	US ROCKIES REGION PLANNING	<b>Local Co-ordinate Reference:</b>	Well P_TALON VIEW 11-9
<b>Project:</b>	KERR MCGEE OIL & GAS ONSHORE LP	<b>TVD Reference:</b>	WELL @ 5171.00ft (Original Well Elev)
<b>Reference Site:</b>	ADAMS_TALON VIEW 7 PAD	<b>MD Reference:</b>	WELL @ 5171.00ft (Original Well Elev)
<b>Site Error:</b>	0.00ft	<b>North Reference:</b>	True
<b>Reference Well:</b>	P_TALON VIEW 11-9	<b>Survey Calculation Method:</b>	Minimum Curvature
<b>Well Error:</b>	0.00ft	<b>Output errors are at</b>	2.00 sigma
<b>Reference Wellbore</b>	P_TALON VIEW 11-9	<b>Database:</b>	EDM 2003.21 Single User Db
<b>Reference Design:</b>	PLAN #1 09-01-09 RHS	<b>Offset TVD Reference:</b>	Offset Datum

Offset Design													ADAMS_TALON VIEW 7 PAD - P_TALON VIEW 12-9 - P_TALON VIEW 12-9 - PLAN #1 09-01-09 RHS	Offset Site Error:	0.00 ft
Survey Program: 0-MWD														Offset Well Error:	0.00 ft
Reference		Offset		Semi Major Axis			Distance						Warning		
Measured Depth (ft)	Vertical Depth (ft)	Measured Depth (ft)	Vertical Depth (ft)	Reference (ft)	Offset (ft)	Highside Toolface (°)	Offset Wellbore Centre +N/-S (ft)	+E/-W (ft)	Between Centres (ft)	Between Ellipses (ft)	Minimum Separation (ft)	Separation Factor			
0.00	0.00	0.00	0.00	0.00	0.00	-180.00	-14.58	0.00	14.58						
100.00	100.00	100.00	100.00	0.10	0.10	-180.00	-14.58	0.00	14.58	14.39	0.19	76.311			
200.00	200.00	200.00	200.00	0.32	0.32	-180.00	-14.58	0.00	14.58	13.94	0.64	22.760			
300.00	300.00	300.00	300.00	0.55	0.55	-180.00	-14.58	0.00	14.58	13.49	1.09	13.374			
400.00	400.00	400.00	400.00	0.77	0.77	-180.00	-14.58	0.00	14.58	13.04	1.54	9.469			
500.00	500.00	500.00	500.00	0.99	0.99	-180.00	-14.58	0.00	14.58	12.59	1.99	7.329			
600.00	600.00	600.00	600.00	1.22	1.22	-180.00	-14.58	0.00	14.58	12.14	2.44	5.978			
700.00	700.00	700.00	700.00	1.44	1.44	-180.00	-14.58	0.00	14.58	11.69	2.89	5.048			
800.00	800.00	800.00	800.00	1.67	1.67	-180.00	-14.58	0.00	14.58	11.24	3.34	4.368			
900.00	900.00	900.00	900.00	1.89	1.89	-180.00	-14.58	0.00	14.58	10.79	3.79	3.850			
1,000.00	1,000.00	1,000.00	1,000.00	2.12	2.12	-180.00	-14.58	0.00	14.58	10.34	4.24	3.441			
1,100.00	1,100.00	1,100.00	1,100.00	2.34	2.34	-180.00	-14.58	0.00	14.58	9.89	4.69	3.111			
1,200.00	1,200.00	1,200.00	1,200.00	2.57	2.57	-180.00	-14.58	0.00	14.58	9.44	5.14	2.839			
1,300.00	1,300.00	1,300.00	1,300.00	2.79	2.79	-180.00	-14.58	0.00	14.58	8.99	5.59	2.610			
1,400.00	1,400.00	1,400.00	1,400.00	3.02	3.02	-180.00	-14.58	0.00	14.58	8.54	6.03	2.416 CC			
1,430.27	1,430.27	1,430.13	1,430.12	3.08	3.08	21.12	-14.73	-0.06	14.58	8.43	6.15	2.369			
1,500.00	1,499.98	1,499.51	1,499.49	3.21	3.21	25.44	-16.20	-0.60	14.63	8.20	6.43	2.276 ES			
1,600.00	1,599.84	1,598.93	1,598.77	3.39	3.39	39.08	-21.05	-2.40	15.35	8.59	6.77	2.269 SF			
1,700.00	1,699.45	1,698.18	1,697.64	3.58	3.57	57.44	-29.12	-5.38	18.20	11.06	7.13	2.551			
1,800.00	1,798.70	1,797.17	1,795.89	3.78	3.77	73.58	-40.36	-9.55	24.24	16.71	7.53	3.219			
1,900.00	1,897.47	1,895.81	1,893.34	4.02	4.00	84.68	-54.71	-14.86	33.57	25.59	7.98	4.206			
2,000.00	1,995.62	1,994.02	1,989.78	4.29	4.26	91.74	-72.13	-21.31	45.86	37.36	8.50	5.396			
2,100.00	2,093.06	2,091.74	2,085.04	4.60	4.56	96.25	-92.52	-28.86	60.85	51.75	9.10	6.689			
2,200.00	2,189.64	2,188.88	2,178.95	4.97	4.91	99.21	-115.79	-37.49	78.34	68.55	9.79	8.005			
2,300.00	2,285.27	2,285.38	2,271.35	5.40	5.32	101.20	-141.86	-47.14	98.24	87.66	10.58	9.282			
2,400.00	2,379.82	2,381.17	2,362.10	5.90	5.78	102.57	-170.61	-57.79	120.45	108.96	11.49	10.480			
2,500.00	2,473.17	2,476.21	2,451.07	6.47	6.29	103.50	-201.92	-69.39	144.91	132.39	12.52	11.573			
2,600.00	2,565.21	2,570.43	2,538.14	7.10	6.86	104.13	-235.69	-81.89	171.56	157.89	13.67	12.550			
2,614.53	2,578.47	2,584.05	2,550.62	7.20	6.95	104.20	-240.79	-83.78	175.61	161.76	13.84	12.684			
2,700.00	2,656.38	2,665.24	2,624.70	7.80	7.49	104.80	-271.97	-95.33	199.85	184.92	14.93	13.382			
2,800.00	2,747.52	2,761.09	2,712.07	8.52	8.15	105.31	-308.93	-109.02	228.30	212.04	16.26	14.040			
2,900.00	2,838.67	2,856.94	2,799.44	9.26	8.84	105.70	-345.89	-122.71	256.77	239.14	17.62	14.569			
3,000.00	2,929.82	2,952.79	2,886.81	10.01	9.53	106.01	-382.86	-136.40	285.24	266.23	19.02	14.999			
3,100.00	3,020.97	3,048.64	2,974.18	10.77	10.24	106.27	-419.82	-150.09	313.72	293.29	20.43	15.354			
3,200.00	3,112.11	3,144.49	3,061.55	11.55	10.96	106.49	-456.78	-163.78	342.21	320.34	21.87	15.649			
3,300.00	3,203.26	3,240.34	3,148.92	12.33	11.69	106.67	-493.74	-177.47	370.70	347.38	23.32	15.899			
3,400.00	3,294.41	3,336.19	3,236.29	13.12	12.42	106.82	-530.71	-191.15	399.19	374.42	24.78	16.111			
3,500.00	3,385.55	3,432.04	3,323.66	13.91	13.16	106.96	-567.67	-204.84	427.69	401.44	26.25	16.293			
3,600.00	3,476.70	3,527.89	3,411.03	14.71	13.91	107.08	-604.63	-218.53	456.19	428.46	27.73	16.452			
3,700.00	3,567.85	3,623.74	3,498.40	15.51	14.65	107.18	-641.60	-232.22	484.68	455.47	29.22	16.590			
3,800.00	3,658.99	3,719.59	3,585.77	16.31	15.40	107.27	-678.56	-245.91	513.18	482.48	30.71	16.711			
3,900.00	3,750.14	3,815.44	3,673.14	17.12	16.16	107.36	-715.52	-259.60	541.69	509.48	32.21	16.819			
4,000.00	3,841.29	3,911.29	3,760.51	17.93	16.91	107.43	-752.49	-273.29	570.19	536.48	33.71	16.915			
4,100.00	3,932.44	4,007.14	3,847.88	18.74	17.67	107.50	-789.45	-286.98	598.69	563.48	35.21	17.002			
4,200.00	4,023.58	4,102.99	3,935.25	19.55	18.43	107.56	-826.41	-300.67	627.19	590.47	36.72	17.079			
4,300.00	4,114.73	4,198.84	4,022.62	20.37	19.19	107.62	-863.38	-314.36	655.70	617.46	38.23	17.150			
4,400.00	4,205.88	4,294.69	4,109.99	21.18	19.95	107.67	-900.34	-328.05	684.20	644.46	39.75	17.214			
4,500.00	4,297.02	4,390.54	4,197.36	22.00	20.72	107.71	-937.30	-341.74	712.71	671.44	41.26	17.272			
4,600.00	4,388.17	4,486.39	4,284.72	22.82	21.48	107.76	-974.26	-355.43	741.21	698.43	42.78	17.326			
4,700.00	4,479.32	4,582.24	4,372.09	23.64	22.25	107.80	-1,011.23	-369.12	769.72	725.42	44.30	17.376			
4,800.00	4,570.47	4,678.08	4,459.46	24.46	23.01	107.84	-1,048.19	-382.81	798.23	752.41	45.82	17.421			
4,900.00	4,661.61	4,773.93	4,546.83	25.28	23.78	107.87	-1,085.15	-396.50	826.73	779.39	47.34	17.464			

CC - Min centre to center distance or convergent point, SF - min separation factor, ES - min ellipse separation



<b>Company:</b>	US ROCKIES REGION PLANNING	<b>Local Co-ordinate Reference:</b>	Well P_TALON VIEW 11-9
<b>Project:</b>	KERR MCGEE OIL & GAS ONSHORE LP	<b>TVD Reference:</b>	WELL @ 5171.00ft (Original Well Elev)
<b>Reference Site:</b>	ADAMS_TALON VIEW 7 PAD	<b>MD Reference:</b>	WELL @ 5171.00ft (Original Well Elev)
<b>Site Error:</b>	0.00ft	<b>North Reference:</b>	True
<b>Reference Well:</b>	P_TALON VIEW 11-9	<b>Survey Calculation Method:</b>	Minimum Curvature
<b>Well Error:</b>	0.00ft	<b>Output errors are at</b>	2.00 sigma
<b>Reference Wellbore</b>	P_TALON VIEW 11-9	<b>Database:</b>	EDM 2003.21 Single User Db
<b>Reference Design:</b>	PLAN #1 09-01-09 RHS	<b>Offset TVD Reference:</b>	Offset Datum

Offset Design													ADAMS_TALON VIEW 7 PAD - P_TALON VIEW 12-9 - P_TALON VIEW 12-9 - PLAN #1 09-01-09 RHS	Offset Site Error:	0.00 ft
Survey Program: 0-MWD														Offset Well Error:	0.00 ft
Reference		Offset		Semi Major Axis			Distance						Warning		
Measured Depth (ft)	Vertical Depth (ft)	Measured Depth (ft)	Vertical Depth (ft)	Reference (ft)	Offset (ft)	Highside Toolface (°)	Offset Wellbore Centre +N/-S (ft)	+E/-W (ft)	Between Centres (ft)	Between Ellipses (ft)	Minimum Separation (ft)	Separation Factor			
5,000.00	4,752.76	4,869.78	4,634.20	26.10	24.55	107.90	-1,122.12	-410.19	855.24	806.38	48.86	17.503			
5,100.00	4,843.91	4,965.63	4,721.57	26.93	25.32	107.93	-1,159.08	-423.88	883.75	833.36	50.38	17.540			
5,200.00	4,935.05	5,061.48	4,808.94	27.75	26.09	107.96	-1,196.04	-437.57	912.25	860.35	51.91	17.575			
5,300.00	5,026.20	5,157.33	4,896.21	28.57	26.86	107.99	-1,233.01	-451.26	940.76	887.33	53.43	17.607			
5,400.00	5,117.35	5,253.18	4,983.68	29.40	27.63	108.01	-1,269.97	-464.95	969.27	914.31	54.96	17.637			
5,500.00	5,208.50	5,349.03	5,071.05	30.22	28.40	108.04	-1,306.93	-478.64	997.78	941.30	56.48	17.666			
5,600.00	5,299.64	5,444.88	5,158.42	31.05	29.17	108.06	-1,343.90	-492.33	1,026.28	968.28	58.00	17.693			
5,700.00	5,390.79	5,540.73	5,245.79	31.87	29.95	108.08	-1,380.86	-506.02	1,054.79	995.26	59.53	17.719			
5,800.00	5,481.94	5,636.58	5,333.16	32.70	30.72	108.10	-1,417.82	-519.71	1,083.30	1,022.25	61.05	17.743			
5,900.00	5,573.08	5,732.43	5,420.53	33.52	31.49	108.12	-1,454.78	-533.40	1,111.81	1,049.23	62.58	17.766			
5,953.15	5,621.53	5,783.37	5,466.97	33.96	31.90	108.13	-1,474.43	-540.68	1,126.96	1,063.57	63.39	17.778			
6,000.00	5,664.39	5,828.31	5,507.93	34.29	32.27	108.38	-1,491.76	-547.09	1,140.20	1,076.11	64.09	17.790			
6,100.00	5,756.87	5,924.42	5,595.53	34.87	33.04	108.78	-1,528.82	-560.82	1,167.69	1,102.23	65.46	17.838			
6,200.00	5,850.62	6,031.79	5,693.84	35.40	33.77	109.00	-1,569.31	-575.81	1,193.80	1,127.06	66.74	17.888			
6,300.00	5,945.53	6,145.11	5,799.21	35.90	34.37	109.18	-1,608.39	-590.29	1,217.59	1,149.74	67.86	17.944			
6,400.00	6,041.48	6,259.68	5,907.33	36.35	34.94	109.34	-1,643.90	-603.44	1,238.96	1,170.07	68.89	17.985			
6,500.00	6,138.35	6,375.40	6,017.98	36.75	35.46	109.47	-1,675.62	-615.19	1,257.84	1,188.02	69.83	18.014			
6,600.00	6,236.03	6,492.14	6,130.91	37.11	35.93	109.59	-1,703.35	-625.46	1,274.19	1,203.53	70.67	18.031			
6,700.00	6,334.40	6,609.78	6,245.83	37.42	36.34	109.69	-1,726.91	-634.18	1,287.97	1,216.57	71.40	18.039			
6,800.00	6,433.33	6,728.18	6,362.44	37.69	36.69	109.76	-1,746.13	-641.30	1,299.13	1,227.11	72.02	18.038			
6,900.00	6,532.71	6,847.18	6,480.38	37.91	36.98	109.82	-1,760.88	-646.76	1,307.65	1,235.11	72.54	18.028			
7,000.00	6,632.42	6,966.63	6,599.33	38.08	37.21	109.86	-1,771.05	-650.53	1,313.50	1,240.56	72.94	18.008			
7,100.00	6,732.33	7,086.36	6,718.90	38.20	37.38	109.89	-1,776.57	-652.58	1,316.67	1,243.44	73.23	17.979			
7,167.68	6,800.00	7,167.46	6,800.00	38.27	37.46	-90.79	-1,777.65	-652.98	1,317.29	1,243.91	73.38	17.951			
7,200.00	6,832.32	7,199.79	6,832.32	38.29	37.48	-90.79	-1,777.65	-652.98	1,317.29	1,243.85	73.43	17.938			
7,300.00	6,932.32	7,299.79	6,932.32	38.36	37.56	-90.79	-1,777.65	-652.98	1,317.29	1,243.70	73.58	17.902			
7,400.00	7,032.32	7,399.79	7,032.32	38.44	37.63	-90.79	-1,777.65	-652.98	1,317.29	1,243.55	73.74	17.865			
7,500.00	7,132.32	7,499.79	7,132.32	38.51	37.70	-90.79	-1,777.65	-652.98	1,317.29	1,243.40	73.89	17.828			
7,600.00	7,232.32	7,599.79	7,232.32	38.59	37.78	-90.79	-1,777.65	-652.98	1,317.29	1,243.24	74.05	17.790			
7,700.00	7,332.32	7,699.79	7,332.32	38.66	37.86	-90.79	-1,777.65	-652.98	1,317.29	1,243.08	74.20	17.752			
7,800.00	7,432.32	7,799.79	7,432.32	38.74	37.93	-90.79	-1,777.65	-652.98	1,317.29	1,242.92	74.37	17.714			
7,900.00	7,532.32	7,899.79	7,532.32	38.82	38.01	-90.79	-1,777.65	-652.98	1,317.29	1,242.76	74.53	17.675			
8,000.00	7,632.32	7,999.79	7,632.32	38.90	38.09	-90.79	-1,777.65	-652.98	1,317.29	1,242.59	74.69	17.636			
8,100.00	7,732.32	8,099.79	7,732.32	38.98	38.18	-90.79	-1,777.65	-652.98	1,317.29	1,242.42	74.86	17.596			
8,200.00	7,832.32	8,199.79	7,832.32	39.06	38.26	-90.79	-1,777.65	-652.98	1,317.29	1,242.25	75.03	17.556			
8,300.00	7,932.32	8,299.79	7,932.32	39.15	38.34	-90.79	-1,777.65	-652.98	1,317.29	1,242.08	75.21	17.516			
8,400.00	8,032.32	8,399.79	8,032.32	39.23	38.43	-90.79	-1,777.65	-652.98	1,317.29	1,241.91	75.38	17.475			
8,500.00	8,132.32	8,499.79	8,132.32	39.32	38.51	-90.79	-1,777.65	-652.98	1,317.29	1,241.73	75.56	17.434			
8,600.00	8,232.32	8,599.79	8,232.32	39.40	38.60	-90.79	-1,777.65	-652.98	1,317.29	1,241.55	75.74	17.392			
8,700.00	8,332.32	8,699.79	8,332.32	39.49	38.69	-90.79	-1,777.65	-652.98	1,317.29	1,241.37	75.92	17.351			
8,800.00	8,432.32	8,799.79	8,432.32	39.58	38.78	-90.79	-1,777.65	-652.98	1,317.29	1,241.18	76.11	17.308			
8,865.68	8,498.00	8,865.46	8,498.00	39.64	38.84	-90.79	-1,777.65	-652.98	1,317.29	1,241.06	76.23	17.281			



<b>Company:</b>	US ROCKIES REGION PLANNING	<b>Local Co-ordinate Reference:</b>	Well P_TALON VIEW 11-9
<b>Project:</b>	KERR MCGEE OIL & GAS ONSHORE LP	<b>TVD Reference:</b>	WELL @ 5171.00ft (Original Well Elev)
<b>Reference Site:</b>	ADAMS_TALON VIEW 7 PAD	<b>MD Reference:</b>	WELL @ 5171.00ft (Original Well Elev)
<b>Site Error:</b>	0.00ft	<b>North Reference:</b>	True
<b>Reference Well:</b>	P_TALON VIEW 11-9	<b>Survey Calculation Method:</b>	Minimum Curvature
<b>Well Error:</b>	0.00ft	<b>Output errors are at</b>	2.00 sigma
<b>Reference Wellbore</b>	P_TALON VIEW 11-9	<b>Database:</b>	EDM 2003.21 Single User Db
<b>Reference Design:</b>	PLAN #1 09-01-09 RHS	<b>Offset TVD Reference:</b>	Offset Datum

Offset Design													ADAMS_TALON VIEW 7 PAD - P_TALON VIEW 21-9 - P_TALON VIEW 21-9 - PLAN #1 09-01-09 RHS	Offset Site Error:	0.00 ft
Survey Program: 0-MWD														Offset Well Error:	0.00 ft
Reference		Offset		Semi Major Axis			Distance						Warning		
Measured Depth (ft)	Vertical Depth (ft)	Measured Depth (ft)	Vertical Depth (ft)	Reference (ft)	Offset (ft)	Highside Toolface (°)	Offset Wellbore Centre +N/-S (ft)	+E/-W (ft)	Between Centres (ft)	Between Ellipses (ft)	Minimum Separation (ft)	Separation Factor			
0.00	0.00	0.00	0.00	0.00	0.00	0.00	29.13	0.00	29.13						
100.00	100.00	100.00	100.00	0.10	0.10	0.00	29.13	0.00	29.13	28.93	0.19	152.446			
200.00	200.00	200.00	200.00	0.32	0.32	0.00	29.13	0.00	29.13	28.48	0.64	45.466			
300.00	300.00	300.00	300.00	0.55	0.55	0.00	29.13	0.00	29.13	28.03	1.09	26.717			
400.00	400.00	400.00	400.00	0.77	0.77	0.00	29.13	0.00	29.13	27.59	1.54	18.917			
500.00	500.00	500.00	500.00	0.99	0.99	0.00	29.13	0.00	29.13	27.14	1.99	14.642			
600.00	600.00	600.00	600.00	1.22	1.22	0.00	29.13	0.00	29.13	26.69	2.44	11.943			
700.00	700.00	700.00	700.00	1.44	1.44	0.00	29.13	0.00	29.13	26.24	2.89	10.084			
800.00	800.00	800.00	800.00	1.67	1.67	0.00	29.13	0.00	29.13	25.79	3.34	8.726			
900.00	900.00	900.00	900.00	1.89	1.89	0.00	29.13	0.00	29.13	25.34	3.79	7.690			
1,000.00	1,000.00	1,000.00	1,000.00	2.12	2.12	0.00	29.13	0.00	29.13	24.89	4.24	6.874			
1,100.00	1,100.00	1,100.00	1,100.00	2.34	2.34	0.00	29.13	0.00	29.13	24.44	4.69	6.215			
1,200.00	1,200.00	1,200.00	1,200.00	2.57	2.57	0.00	29.13	0.00	29.13	23.99	5.14	5.671			
1,300.00	1,300.00	1,300.00	1,300.00	2.79	2.79	0.00	29.13	0.00	29.13	23.54	5.59	5.214			
1,400.00	1,400.00	1,400.00	1,400.00	3.02	3.02	0.00	29.13	0.00	29.13	23.09	6.03	4.826 CC, ES			
1,500.00	1,499.98	1,499.80	1,499.78	3.21	3.23	-157.27	29.39	1.72	31.04	24.60	6.44	4.818 SF			
1,600.00	1,599.84	1,599.31	1,599.15	3.39	3.44	-152.41	30.18	6.85	36.98	30.16	6.82	5.426			
1,700.00	1,699.45	1,698.25	1,697.71	3.58	3.65	-147.09	31.49	15.33	47.23	40.03	7.20	6.559			
1,800.00	1,798.70	1,796.34	1,795.08	3.78	3.88	-142.60	33.29	27.05	61.92	54.32	7.60	8.144			
1,900.00	1,897.47	1,893.32	1,890.89	4.02	4.13	-139.19	35.57	41.88	81.03	73.00	8.04	10.084			
2,000.00	1,995.62	1,988.96	1,984.82	4.29	4.41	-136.66	38.31	59.62	104.44	95.94	8.51	12.280			
2,100.00	2,093.06	2,083.01	2,076.56	4.60	4.72	-134.74	41.46	80.09	132.04	123.02	9.02	14.638			
2,200.00	2,189.64	2,175.28	2,165.85	4.97	5.07	-133.24	44.99	103.05	163.68	154.09	9.59	17.070			
2,300.00	2,285.27	2,265.58	2,252.47	5.40	5.46	-132.01	48.87	128.26	199.24	189.02	10.22	19.499			
2,400.00	2,379.82	2,353.76	2,336.24	5.90	5.89	-130.95	53.06	155.47	238.57	227.66	10.91	21.865			
2,500.00	2,473.17	2,439.67	2,417.00	6.47	6.35	-130.01	57.52	184.42	281.55	269.87	11.67	24.122			
2,600.00	2,565.21	2,523.22	2,494.66	7.10	6.86	-129.13	62.21	214.86	328.02	315.51	12.50	26.241			
2,614.53	2,578.47	2,535.16	2,505.68	7.20	6.93	-129.01	62.91	219.39	335.05	322.42	12.63	26.532			
2,700.00	2,656.38	2,604.67	2,569.48	7.80	7.39	-128.89	67.11	246.67	377.14	363.71	13.44	28.069			
2,800.00	2,747.52	2,687.69	2,644.88	8.52	7.99	-128.54	72.39	281.00	427.53	413.08	14.45	29.584			
2,900.00	2,838.67	2,773.91	2,723.05	9.26	8.65	-128.21	77.93	316.95	478.13	462.61	15.52	30.806			
3,000.00	2,929.82	2,860.13	2,801.22	10.01	9.32	-127.94	83.46	352.91	528.74	512.13	16.62	31.822			
3,100.00	3,020.97	2,946.36	2,879.40	10.77	10.00	-127.72	89.00	388.87	579.36	561.63	17.73	32.672			
3,200.00	3,112.11	3,032.58	2,957.57	11.55	10.69	-127.53	94.54	424.83	629.98	611.12	18.87	33.390			
3,300.00	3,203.26	3,118.80	3,035.74	12.33	11.39	-127.37	100.07	460.78	680.61	660.59	20.02	34.001			
3,400.00	3,294.41	3,205.03	3,113.91	13.12	12.10	-127.24	105.61	496.74	731.24	710.06	21.18	34.525			
3,500.00	3,385.55	3,291.25	3,192.09	13.91	12.82	-127.12	111.15	532.70	781.87	759.52	22.35	34.978			
3,600.00	3,476.70	3,377.48	3,270.26	14.71	13.54	-127.02	116.68	568.66	832.51	808.97	23.54	35.371			
3,700.00	3,567.85	3,463.70	3,348.43	15.51	14.26	-126.92	122.22	604.61	883.14	858.42	24.73	35.715			
3,800.00	3,658.99	3,549.92	3,426.60	16.31	14.99	-126.84	127.76	640.57	933.78	907.86	25.92	36.019			
3,900.00	3,750.14	3,636.15	3,504.78	17.12	15.73	-126.77	133.29	676.53	984.42	957.29	27.13	36.288			
4,000.00	3,841.29	3,722.37	3,582.95	17.93	16.46	-126.70	138.83	712.48	1,035.06	1,006.73	28.34	36.527			
4,100.00	3,932.44	3,808.59	3,661.12	18.74	17.20	-126.64	144.37	748.44	1,085.70	1,056.15	29.55	36.742			
4,200.00	4,023.58	3,894.82	3,739.29	19.55	17.94	-126.59	149.90	784.40	1,136.35	1,105.58	30.77	36.935			
4,300.00	4,114.73	3,981.04	3,817.47	20.37	18.68	-126.54	155.44	820.36	1,186.99	1,155.00	31.99	37.108			
4,400.00	4,205.88	4,067.26	3,895.64	21.18	19.42	-126.49	160.98	856.31	1,237.63	1,204.42	33.21	37.266			
4,500.00	4,297.02	4,153.49	3,973.81	22.00	20.17	-126.45	166.51	892.27	1,288.28	1,253.84	34.44	37.409			
4,600.00	4,388.17	4,239.71	4,051.98	22.82	20.92	-126.41	172.05	928.23	1,338.92	1,303.26	35.67	37.540			
4,700.00	4,479.32	4,325.93	4,130.16	23.64	21.66	-126.37	177.59	964.19	1,389.57	1,352.67	36.90	37.660			
4,800.00	4,570.47	4,412.16	4,208.33	24.46	22.41	-126.34	183.12	1,000.14	1,440.21	1,402.08	38.13	37.770			
4,900.00	4,661.61	4,522.81	4,309.10	25.28	23.27	-126.34	190.08	1,045.31	1,490.41	1,450.97	39.44	37.787			
5,000.00	4,752.76	4,650.72	4,427.59	26.10	24.07	-126.51	197.40	1,092.88	1,538.48	1,497.77	40.72	37.784			

CC - Min centre to center distance or convergent point, SF - min separation factor, ES - min ellipse separation



<b>Company:</b>	US ROCKIES REGION PLANNING	<b>Local Co-ordinate Reference:</b>	Well P_TALON VIEW 11-9
<b>Project:</b>	KERR MCGEE OIL & GAS ONSHORE LP	<b>TVD Reference:</b>	WELL @ 5171.00ft (Original Well Elev)
<b>Reference Site:</b>	ADAMS_TALON VIEW 7 PAD	<b>MD Reference:</b>	WELL @ 5171.00ft (Original Well Elev)
<b>Site Error:</b>	0.00ft	<b>North Reference:</b>	True
<b>Reference Well:</b>	P_TALON VIEW 11-9	<b>Survey Calculation Method:</b>	Minimum Curvature
<b>Well Error:</b>	0.00ft	<b>Output errors are at</b>	2.00 sigma
<b>Reference Wellbore</b>	P_TALON VIEW 11-9	<b>Database:</b>	EDM 2003.21 Single User Db
<b>Reference Design:</b>	PLAN #1 09-01-09 RHS	<b>Offset TVD Reference:</b>	Offset Datum

Offset Design													ADAMS_TALON VIEW 7 PAD - P_TALON VIEW 21-9 - P_TALON VIEW 21-9 - PLAN #1 09-01-09 RHS	Offset Site Error:	0.00 ft
Survey Program: 0-MWD														Offset Well Error:	0.00 ft
Reference		Offset		Semi Major Axis			Distance						Warning		
Measured Depth (ft)	Vertical Depth (ft)	Measured Depth (ft)	Vertical Depth (ft)	Reference (ft)	Offset (ft)	Highside Toolface (°)	Offset Wellbore Centre +N/-S (ft)	+E/-W (ft)	Between Centres (ft)	Between Ellipses (ft)	Minimum Separation (ft)	Separation Factor			
5,100.00	4,843.91	4,781.86	4,551.20	26.93	24.82	-126.86	204.07	1,136.17	1,584.20	1,542.24	41.95	37.761			
5,200.00	4,935.05	4,915.81	4,679.38	27.75	25.49	-127.38	209.98	1,174.56	1,627.50	1,584.37	43.13	37.734			
5,300.00	5,026.20	5,052.05	4,811.46	28.57	26.08	-128.07	215.05	1,207.50	1,668.38	1,624.14	44.24	37.712			
5,400.00	5,117.35	5,190.01	4,946.67	29.40	26.58	-128.91	219.21	1,234.48	1,706.85	1,661.57	45.28	37.698			
5,500.00	5,208.50	5,329.06	5,084.14	30.22	26.98	-129.90	222.39	1,255.15	1,742.96	1,696.74	46.22	37.709			
5,600.00	5,299.64	5,468.58	5,222.91	31.05	27.28	-131.02	224.55	1,269.23	1,776.79	1,729.72	47.07	37.748			
5,700.00	5,390.79	5,607.89	5,362.00	31.87	27.50	-132.26	225.69	1,276.61	1,808.46	1,760.64	47.82	37.820			
5,800.00	5,481.94	5,727.83	5,481.94	32.70	27.62	-133.42	225.88	1,277.82	1,838.30	1,789.83	48.47	37.928			
5,900.00	5,573.08	5,818.98	5,573.08	33.52	27.70	-134.30	225.88	1,277.82	1,868.15	1,819.05	49.10	38.049			
5,953.15	5,621.53	5,867.42	5,621.53	33.96	27.75	-134.75	225.88	1,277.82	1,884.18	1,834.75	49.43	38.120			
6,000.00	5,664.39	5,910.28	5,664.39	34.29	27.79	-135.35	225.88	1,277.82	1,898.16	1,848.37	49.79	38.125			
6,100.00	5,756.87	6,002.76	5,756.87	34.87	27.88	-136.52	225.88	1,277.82	1,926.49	1,876.04	50.46	38.181			
6,200.00	5,850.62	6,096.51	5,850.62	35.40	27.97	-137.57	225.88	1,277.82	1,952.70	1,901.61	51.08	38.225			
6,300.00	5,945.53	6,191.42	5,945.53	35.90	28.07	-138.50	225.88	1,277.82	1,976.65	1,924.98	51.67	38.257			
6,400.00	6,041.48	6,287.37	6,041.48	36.35	28.16	-139.32	225.88	1,277.82	1,998.24	1,946.04	52.21	38.276			
6,500.00	6,138.35	6,384.24	6,138.35	36.75	28.26	-140.02	225.88	1,277.82	2,017.39	1,964.69	52.70	38.282			
6,600.00	6,236.03	6,481.92	6,236.03	37.11	28.36	-140.62	225.88	1,277.82	2,034.01	1,980.87	53.14	38.273			
6,700.00	6,334.40	6,580.29	6,334.40	37.42	28.47	-141.11	225.88	1,277.82	2,048.04	1,994.50	53.54	38.249			
6,800.00	6,433.33	6,679.22	6,433.33	37.69	28.57	-141.51	225.88	1,277.82	2,059.43	2,005.53	53.90	38.210			
6,900.00	6,532.71	6,778.60	6,532.71	37.91	28.68	-141.81	225.88	1,277.82	2,068.13	2,013.93	54.20	38.155			
7,000.00	6,632.42	6,878.31	6,632.42	38.08	28.79	-142.01	225.88	1,277.82	2,074.11	2,019.65	54.46	38.083			
7,100.00	6,732.33	6,978.22	6,732.33	38.20	28.90	-142.12	225.88	1,277.82	2,077.35	2,022.68	54.68	37.994			
7,167.68	6,800.00	7,045.89	6,800.00	38.27	28.98	17.18	225.88	1,277.82	2,077.98	2,023.19	54.80	37.921			
7,200.00	6,832.32	7,078.22	6,832.32	38.29	29.01	17.18	225.88	1,277.82	2,077.98	2,023.11	54.87	37.871			
7,300.00	6,932.32	7,178.22	6,932.32	38.36	29.13	17.18	225.88	1,277.82	2,077.98	2,022.89	55.09	37.718			
7,400.00	7,032.32	7,278.22	7,032.32	38.44	29.24	17.18	225.88	1,277.82	2,077.98	2,022.67	55.32	37.565			
7,500.00	7,132.32	7,378.22	7,132.32	38.51	29.36	17.18	225.88	1,277.82	2,077.98	2,022.44	55.55	37.411			
7,600.00	7,232.32	7,478.22	7,232.32	38.59	29.47	17.18	225.88	1,277.82	2,077.98	2,022.21	55.78	37.256			
7,700.00	7,332.32	7,578.22	7,332.32	38.66	29.59	17.18	225.88	1,277.82	2,077.98	2,021.97	56.01	37.101			
7,800.00	7,432.32	7,678.22	7,432.32	38.74	29.71	17.18	225.88	1,277.82	2,077.98	2,021.74	56.25	36.945			
7,900.00	7,532.32	7,778.22	7,532.32	38.82	29.83	17.18	225.88	1,277.82	2,077.98	2,021.50	56.48	36.789			
8,000.00	7,632.32	7,878.22	7,632.32	38.90	29.95	17.18	225.88	1,277.82	2,077.98	2,021.26	56.72	36.633			
8,100.00	7,732.32	7,978.22	7,732.32	38.98	30.08	17.18	225.88	1,277.82	2,077.98	2,021.02	56.97	36.476			
8,200.00	7,832.32	8,078.22	7,832.32	39.06	30.20	17.18	225.88	1,277.82	2,077.98	2,020.77	57.21	36.319			
8,300.00	7,932.32	8,178.22	7,932.32	39.15	30.33	17.18	225.88	1,277.82	2,077.98	2,020.52	57.46	36.162			
8,400.00	8,032.32	8,278.22	8,032.32	39.23	30.45	17.18	225.88	1,277.82	2,077.98	2,020.27	57.71	36.005			
8,445.06	8,077.39	8,323.28	8,077.39	39.27	30.51	17.18	225.88	1,277.82	2,077.98	2,020.16	57.83	35.934			
8,500.00	8,132.32	8,338.89	8,093.00	39.32	30.53	17.18	225.88	1,277.82	2,078.36	2,020.44	57.91	35.887			
8,600.00	8,232.32	8,338.89	8,093.00	39.40	30.53	17.18	225.88	1,277.82	2,082.65	2,024.62	58.03	35.887			
8,700.00	8,332.32	8,338.89	8,093.00	39.49	30.53	17.18	225.88	1,277.82	2,091.72	2,033.57	58.16	35.968			
8,800.00	8,432.32	8,338.89	8,093.00	39.58	30.53	17.18	225.88	1,277.82	2,105.51	2,047.23	58.28	36.129			
8,865.68	8,498.00	8,338.89	8,093.00	39.64	30.53	17.18	225.88	1,277.82	2,117.08	2,058.73	58.36	36.277			



<b>Company:</b>	US ROCKIES REGION PLANNING	<b>Local Co-ordinate Reference:</b>	Well P_TALON VIEW 11-9
<b>Project:</b>	KERR MCGEE OIL & GAS ONSHORE LP	<b>TVD Reference:</b>	WELL @ 5171.00ft (Original Well Elev)
<b>Reference Site:</b>	ADAMS_TALON VIEW 7 PAD	<b>MD Reference:</b>	WELL @ 5171.00ft (Original Well Elev)
<b>Site Error:</b>	0.00ft	<b>North Reference:</b>	True
<b>Reference Well:</b>	P_TALON VIEW 11-9	<b>Survey Calculation Method:</b>	Minimum Curvature
<b>Well Error:</b>	0.00ft	<b>Output errors are at</b>	2.00 sigma
<b>Reference Wellbore</b>	P_TALON VIEW 11-9	<b>Database:</b>	EDM 2003.21 Single User Db
<b>Reference Design:</b>	PLAN #1 09-01-09 RHS	<b>Offset TVD Reference:</b>	Offset Datum

Offset Design													ADAMS_TALON VIEW 7 PAD - P_TALON VIEW 22-9 - P_TALON VIEW 22-9 - PLAN #1 09-01-09 RHS	Offset Site Error:	0.00 ft
Survey Program: 0-MWD														Offset Well Error:	0.00 ft
Reference		Offset		Semi Major Axis			Distance						Warning		
Measured Depth (ft)	Vertical Depth (ft)	Measured Depth (ft)	Vertical Depth (ft)	Reference (ft)	Offset (ft)	Highside Tooface (°)	Offset Wellbore Centre +N/-S (ft)	+E/-W (ft)	Between Centres (ft)	Between Ellipses (ft)	Minimum Separation (ft)	Separation Factor			
0.00	0.00	0.00	0.00	0.00	0.00	180.00	-29.17	0.00	29.17						
100.00	100.00	100.00	100.00	0.10	0.10	180.00	-29.17	0.00	29.17	28.98	0.19	152.667			
200.00	200.00	200.00	200.00	0.32	0.32	180.00	-29.17	0.00	29.17	28.53	0.64	45.532			
300.00	300.00	300.00	300.00	0.55	0.55	180.00	-29.17	0.00	29.17	28.08	1.09	26.756			
400.00	400.00	400.00	400.00	0.77	0.77	180.00	-29.17	0.00	29.17	27.63	1.54	18.944			
500.00	500.00	500.00	500.00	0.99	0.99	180.00	-29.17	0.00	29.17	27.18	1.99	14.663			
600.00	600.00	600.00	600.00	1.22	1.22	180.00	-29.17	0.00	29.17	26.73	2.44	11.960			
700.00	700.00	700.00	700.00	1.44	1.44	180.00	-29.17	0.00	29.17	26.28	2.89	10.099			
800.00	800.00	800.00	800.00	1.67	1.67	180.00	-29.17	0.00	29.17	25.83	3.34	8.739			
900.00	900.00	900.00	900.00	1.89	1.89	180.00	-29.17	0.00	29.17	25.38	3.79	7.701			
1,000.00	1,000.00	1,000.00	1,000.00	2.12	2.12	180.00	-29.17	0.00	29.17	24.93	4.24	6.884			
1,100.00	1,100.00	1,100.00	1,100.00	2.34	2.34	180.00	-29.17	0.00	29.17	24.48	4.69	6.224			
1,200.00	1,200.00	1,200.00	1,200.00	2.57	2.57	180.00	-29.17	0.00	29.17	24.03	5.14	5.679			
1,300.00	1,300.00	1,300.00	1,300.00	2.79	2.79	180.00	-29.17	0.00	29.17	23.58	5.59	5.222			
1,400.00	1,400.00	1,400.00	1,400.00	3.02	3.02	180.00	-29.17	0.00	29.17	23.13	6.03	4.833 CC			
1,500.00	1,499.98	1,498.99	1,498.97	3.21	3.21	21.82	-30.88	0.03	29.27	22.84	6.42	4.557 ES			
1,600.00	1,599.84	1,597.96	1,597.80	3.39	3.38	25.18	-36.00	0.11	29.64	22.88	6.76	4.384			
1,700.00	1,699.45	1,696.89	1,696.36	3.58	3.56	30.55	-44.54	0.25	30.48	23.37	7.11	4.287 SF			
1,800.00	1,798.70	1,795.76	1,794.50	3.78	3.76	37.50	-56.46	0.45	32.07	24.59	7.48	4.288			
1,900.00	1,897.47	1,894.55	1,892.10	4.02	3.99	45.31	-71.74	0.70	34.73	26.84	7.89	4.401			
2,000.00	1,995.62	1,993.25	1,989.02	4.29	4.25	53.18	-90.37	1.01	38.73	30.35	8.37	4.625			
2,100.00	2,093.06	2,091.83	2,085.13	4.60	4.55	60.45	-112.29	1.38	44.19	35.24	8.96	4.935			
2,200.00	2,189.64	2,190.28	2,180.30	4.97	4.90	66.76	-137.47	1.79	51.17	41.51	9.66	5.299			
2,300.00	2,285.27	2,288.59	2,274.41	5.40	5.31	72.01	-165.86	2.26	59.61	49.13	10.49	5.684			
2,400.00	2,379.82	2,386.73	2,367.33	5.90	5.79	76.28	-197.40	2.78	69.47	58.01	11.46	6.062			
2,500.00	2,473.17	2,484.69	2,458.96	6.47	6.32	79.72	-232.05	3.36	80.66	68.10	12.57	6.418			
2,600.00	2,565.21	2,582.81	2,549.53	7.10	6.91	82.55	-269.76	3.98	93.08	79.27	13.82	6.736			
2,614.53	2,578.47	2,597.20	2,562.76	7.20	7.01	83.00	-275.42	4.07	94.93	80.92	14.01	6.775			
2,700.00	2,656.38	2,681.84	2,640.58	7.80	7.56	85.62	-308.71	4.62	105.90	90.71	15.19	6.970			
2,800.00	2,747.52	2,780.87	2,731.63	8.52	8.22	88.06	-347.66	5.27	118.95	102.34	16.61	7.161			
2,900.00	2,838.67	2,879.90	2,822.67	9.26	8.91	90.02	-386.61	5.91	132.18	114.12	18.06	7.320			
3,000.00	2,929.82	2,978.93	2,913.72	10.01	9.60	91.62	-425.55	6.56	145.53	126.00	19.53	7.453			
3,100.00	3,020.97	3,077.96	3,004.77	10.77	10.31	92.95	-464.50	7.20	158.97	137.96	21.01	7.565			
3,200.00	3,112.11	3,176.99	3,095.82	11.55	11.02	94.08	-503.45	7.85	172.48	149.97	22.52	7.661			
3,300.00	3,203.26	3,276.02	3,186.87	12.33	11.75	95.04	-542.39	8.49	186.05	162.02	24.03	7.743			
3,400.00	3,294.41	3,375.05	3,277.91	13.12	12.48	95.87	-581.34	9.14	199.67	174.12	25.55	7.814			
3,500.00	3,385.55	3,474.08	3,368.96	13.91	13.21	96.59	-620.29	9.78	213.32	186.24	27.08	7.877			
3,600.00	3,476.70	3,573.11	3,460.01	14.71	13.95	97.23	-659.23	10.42	227.00	198.38	28.62	7.932			
3,700.00	3,567.85	3,672.14	3,551.06	15.51	14.69	97.79	-698.18	11.07	240.70	210.54	30.16	7.981			
3,800.00	3,658.99	3,771.17	3,642.11	16.31	15.44	98.30	-737.13	11.71	254.42	222.72	31.70	8.025			
3,900.00	3,750.14	3,870.20	3,733.15	17.12	16.18	98.75	-776.07	12.36	268.16	234.91	33.25	8.064			
4,000.00	3,841.29	3,969.25	3,824.22	17.93	16.93	99.16	-815.03	13.00	281.92	247.12	34.80	8.100			
4,100.00	3,932.44	4,069.77	3,917.33	18.74	17.50	99.88	-852.89	13.63	295.43	259.25	36.18	8.165			
4,200.00	4,023.58	4,170.06	4,011.49	19.55	18.02	101.19	-887.40	14.20	308.55	271.06	37.49	8.230			
4,300.00	4,114.73	4,269.88	4,106.34	20.37	18.50	103.01	-918.44	14.71	321.49	282.76	38.73	8.301			
4,400.00	4,205.88	4,368.98	4,201.54	21.18	18.95	105.26	-945.98	15.17	334.52	294.65	39.87	8.390			
4,500.00	4,297.02	4,467.14	4,296.71	22.00	19.35	107.88	-969.99	15.57	348.00	307.12	40.88	8.512			
4,600.00	4,388.17	4,564.15	4,391.52	22.82	19.71	110.80	-990.51	15.91	362.30	320.56	41.74	8.679			
4,700.00	4,479.32	4,659.81	4,485.64	23.64	20.03	113.94	-1,007.59	16.19	377.80	335.38	42.42	8.905			
4,800.00	4,570.47	4,753.95	4,578.76	24.46	20.30	117.24	-1,021.31	16.41	394.90	351.98	42.92	9.202			
4,900.00	4,661.61	4,846.38	4,670.60	25.28	20.53	120.63	-1,031.81	16.59	413.95	370.74	43.21	9.579			
5,000.00	4,752.76	4,936.99	4,760.90	26.10	20.72	124.04	-1,039.22	16.71	435.28	391.96	43.32	10.048			

CC - Min centre to center distance or convergent point, SF - min separation factor, ES - min ellipse separation



<b>Company:</b>	US ROCKIES REGION PLANNING	<b>Local Co-ordinate Reference:</b>	Well P_TALON VIEW 11-9
<b>Project:</b>	KERR MCGEE OIL & GAS ONSHORE LP	<b>TVD Reference:</b>	WELL @ 5171.00ft (Original Well Elev)
<b>Reference Site:</b>	ADAMS_TALON VIEW 7 PAD	<b>MD Reference:</b>	WELL @ 5171.00ft (Original Well Elev)
<b>Site Error:</b>	0.00ft	<b>North Reference:</b>	True
<b>Reference Well:</b>	P_TALON VIEW 11-9	<b>Survey Calculation Method:</b>	Minimum Curvature
<b>Well Error:</b>	0.00ft	<b>Output errors are at</b>	2.00 sigma
<b>Reference Wellbore</b>	P_TALON VIEW 11-9	<b>Database:</b>	EDM 2003.21 Single User Db
<b>Reference Design:</b>	PLAN #1 09-01-09 RHS	<b>Offset TVD Reference:</b>	Offset Datum

Offset Design													ADAMS_TALON VIEW 7 PAD - P_TALON VIEW 22-9 - P_TALON VIEW 22-9 - PLAN #1 09-01-09 RHS	Offset Site Error:	0.00 ft
Survey Program: 0-MWD														Offset Well Error:	0.00 ft
Reference		Offset		Semi Major Axis			Distance						Warning		
Measured Depth (ft)	Vertical Depth (ft)	Measured Depth (ft)	Vertical Depth (ft)	Reference (ft)	Offset (ft)	Highside Toolface (°)	Offset Wellbore Centre +N/-S (ft)	+E/-W (ft)	Between Centres (ft)	Between Ellipses (ft)	Minimum Separation (ft)	Separation Factor			
5,100.00	4,843.91	5,025.64	4,849.43	26.93	20.87	127.41	-1,043.70	16.79	459.15	415.89	43.26	10.613			
5,200.00	4,935.05	5,112.23	4,936.00	27.75	20.98	130.70	-1,045.43	16.81	485.77	442.70	43.06	11.280			
5,300.00	5,026.20	5,202.43	5,026.20	28.57	21.07	133.98	-1,045.47	16.81	514.84	472.12	42.72	12.051			
5,400.00	5,117.35	5,293.58	5,117.35	29.40	21.17	136.97	-1,045.47	16.81	545.48	503.11	42.37	12.874			
5,500.00	5,208.50	5,384.72	5,208.50	30.22	21.26	139.65	-1,045.47	16.81	577.42	535.38	42.04	13.735			
5,600.00	5,299.64	5,475.87	5,299.64	31.05	21.35	142.07	-1,045.47	16.81	610.47	568.72	41.74	14.624			
5,700.00	5,390.79	5,567.02	5,390.79	31.87	21.45	144.26	-1,045.47	16.81	644.44	602.96	41.49	15.533			
5,800.00	5,481.94	5,658.16	5,481.94	32.70	21.55	146.23	-1,045.47	16.81	679.21	637.91	41.31	16.443			
5,900.00	5,573.08	5,749.31	5,573.08	33.52	21.65	148.02	-1,045.47	16.81	714.66	673.46	41.20	17.344			
5,953.15	5,621.53	5,797.75	5,621.53	33.96	21.70	148.90	-1,045.47	16.81	733.74	692.58	41.17	17.823			
6,000.00	5,664.39	5,840.61	5,664.39	34.29	21.75	149.81	-1,045.47	16.81	750.38	709.27	41.11	18.254			
6,100.00	5,756.87	5,933.09	5,756.87	34.87	21.85	151.53	-1,045.47	16.81	784.13	743.14	40.99	19.130			
6,200.00	5,850.62	6,026.85	5,850.62	35.40	21.96	152.98	-1,045.47	16.81	815.33	774.38	40.94	19.913			
6,300.00	5,945.53	6,121.75	5,945.53	35.90	22.07	154.20	-1,045.47	16.81	843.81	802.86	40.95	20.606			
6,400.00	6,041.48	6,217.70	6,041.48	36.35	22.18	155.23	-1,045.47	16.81	869.45	828.46	41.00	21.208			
6,500.00	6,138.35	6,314.58	6,138.35	36.75	22.29	156.08	-1,045.47	16.81	892.16	851.09	41.07	21.724			
6,600.00	6,236.03	6,412.26	6,236.03	37.11	22.41	156.78	-1,045.47	16.81	911.84	870.69	41.15	22.157			
6,700.00	6,334.40	6,510.62	6,334.40	37.42	22.53	157.35	-1,045.47	16.81	928.43	887.19	41.25	22.509			
6,800.00	6,433.33	6,609.56	6,433.33	37.69	22.65	157.79	-1,045.47	16.81	941.88	900.54	41.34	22.782			
6,900.00	6,532.71	6,708.94	6,532.71	37.91	22.78	158.12	-1,045.47	16.81	952.15	910.72	41.43	22.980			
7,000.00	6,632.42	6,808.64	6,632.42	38.08	22.90	158.34	-1,045.47	16.81	959.20	917.68	41.52	23.104			
7,100.00	6,732.33	6,908.56	6,732.33	38.20	23.03	158.46	-1,045.47	16.81	963.02	921.43	41.59	23.154			
7,167.68	6,800.00	6,976.23	6,800.00	38.27	23.12	-42.20	-1,045.47	16.81	963.76	922.12	41.64	23.144			
7,200.00	6,832.32	7,008.55	6,832.32	38.29	23.16	-42.20	-1,045.47	16.81	963.76	922.03	41.73	23.093			
7,300.00	6,932.32	7,108.55	6,932.32	38.36	23.29	-42.20	-1,045.47	16.81	963.76	921.75	42.01	22.941			
7,400.00	7,032.32	7,208.55	7,032.32	38.44	23.42	-42.20	-1,045.47	16.81	963.76	921.47	42.29	22.789			
7,500.00	7,132.32	7,308.55	7,132.32	38.51	23.56	-42.20	-1,045.47	16.81	963.76	921.19	42.57	22.637			
7,600.00	7,232.32	7,408.55	7,232.32	38.59	23.69	-42.20	-1,045.47	16.81	963.76	920.90	42.86	22.486			
7,700.00	7,332.32	7,508.55	7,332.32	38.66	23.83	-42.20	-1,045.47	16.81	963.76	920.61	43.15	22.336			
7,800.00	7,432.32	7,608.55	7,432.32	38.74	23.97	-42.20	-1,045.47	16.81	963.76	920.32	43.44	22.186			
7,900.00	7,532.32	7,708.55	7,532.32	38.82	24.11	-42.20	-1,045.47	16.81	963.76	920.03	43.73	22.037			
8,000.00	7,632.32	7,808.55	7,632.32	38.90	24.25	-42.20	-1,045.47	16.81	963.76	919.73	44.03	21.888			
8,100.00	7,732.32	7,908.55	7,732.32	38.98	24.39	-42.20	-1,045.47	16.81	963.76	919.43	44.33	21.741			
8,200.00	7,832.32	8,008.55	7,832.32	39.06	24.53	-42.20	-1,045.47	16.81	963.76	919.13	44.63	21.594			
8,300.00	7,932.32	8,108.55	7,932.32	39.15	24.67	-42.20	-1,045.47	16.81	963.76	918.83	44.94	21.448			
8,400.00	8,032.32	8,208.55	8,032.32	39.23	24.82	-42.20	-1,045.47	16.81	963.76	918.52	45.24	21.302			
8,448.46	8,080.78	8,257.01	8,080.78	39.27	24.89	-42.20	-1,045.47	16.81	963.76	918.37	45.39	21.232			
8,500.00	8,132.32	8,273.23	8,097.00	39.32	24.91	-42.20	-1,045.47	16.81	964.41	918.92	45.49	21.200			
8,600.00	8,232.32	8,273.23	8,097.00	39.40	24.91	-42.20	-1,045.47	16.81	973.22	927.59	45.63	21.329			
8,700.00	8,332.32	8,273.23	8,097.00	39.49	24.91	-42.20	-1,045.47	16.81	992.08	946.31	45.77	21.676			
8,800.00	8,432.32	8,273.23	8,097.00	39.58	24.91	-42.20	-1,045.47	16.81	1,020.43	974.52	45.91	22.226			
8,865.68	8,498.00	8,273.23	8,097.00	39.64	24.91	-42.20	-1,045.47	16.81	1,043.86	997.85	46.00	22.690			



<b>Company:</b>	US ROCKIES REGION PLANNING	<b>Local Co-ordinate Reference:</b>	Well P_TALON VIEW 11-9
<b>Project:</b>	KERR MCGEE OIL & GAS ONSHORE LP	<b>TVD Reference:</b>	WELL @ 5171.00ft (Original Well Elev)
<b>Reference Site:</b>	ADAMS_TALON VIEW 7 PAD	<b>MD Reference:</b>	WELL @ 5171.00ft (Original Well Elev)
<b>Site Error:</b>	0.00ft	<b>North Reference:</b>	True
<b>Reference Well:</b>	P_TALON VIEW 11-9	<b>Survey Calculation Method:</b>	Minimum Curvature
<b>Well Error:</b>	0.00ft	<b>Output errors are at</b>	2.00 sigma
<b>Reference Wellbore</b>	P_TALON VIEW 11-9	<b>Database:</b>	EDM 2003.21 Single User Db
<b>Reference Design:</b>	PLAN #1 09-01-09 RHS	<b>Offset TVD Reference:</b>	Offset Datum

Offset Design												ADAMS_TALON VIEW 7 PAD - P_TALON VIEW 3-9 - P_TALON VIEW 3-9 - PLAN #1 09-01-09 RHS	Offset Site Error:	0.00 ft
Survey Program: 0-MWD													Offset Well Error:	0.00 ft
Reference		Offset		Semi Major Axis			Distance					Warning		
Measured Depth (ft)	Vertical Depth (ft)	Measured Depth (ft)	Vertical Depth (ft)	Reference (ft)	Offset (ft)	Highside Tooface (°)	Offset Wellbore Centre +N/-S (ft)	+E/-W (ft)	Between Centres (ft)	Between Ellipses (ft)	Minimum Separation (ft)	Separation Factor		
0.00	0.00	0.00	0.00	0.00	0.00	0.00	43.70	0.00	43.70					
100.00	100.00	100.00	100.00	0.10	0.10	0.00	43.70	0.00	43.70	43.51	0.19	228.757		
200.00	200.00	200.00	200.00	0.32	0.32	0.00	43.70	0.00	43.70	43.06	0.64	68.226		
300.00	300.00	300.00	300.00	0.55	0.55	0.00	43.70	0.00	43.70	42.61	1.09	40.092		
400.00	400.00	400.00	400.00	0.77	0.77	0.00	43.70	0.00	43.70	42.16	1.54	28.386		
500.00	500.00	500.00	500.00	0.99	0.99	0.00	43.70	0.00	43.70	41.72	1.99	21.971		
600.00	600.00	600.00	600.00	1.22	1.22	0.00	43.70	0.00	43.70	41.27	2.44	17.921		
700.00	700.00	700.00	700.00	1.44	1.44	0.00	43.70	0.00	43.70	40.82	2.89	15.132		
800.00	800.00	800.00	800.00	1.67	1.67	0.00	43.70	0.00	43.70	40.37	3.34	13.094		
900.00	900.00	900.00	900.00	1.89	1.89	0.00	43.70	0.00	43.70	39.92	3.79	11.540		
1,000.00	1,000.00	1,000.00	1,000.00	2.12	2.12	0.00	43.70	0.00	43.70	39.47	4.24	10.315		
1,100.00	1,100.00	1,100.00	1,100.00	2.34	2.34	0.00	43.70	0.00	43.70	39.02	4.69	9.326		
1,200.00	1,200.00	1,200.00	1,200.00	2.57	2.57	0.00	43.70	0.00	43.70	38.57	5.14	8.510		
1,300.00	1,300.00	1,300.00	1,300.00	2.79	2.79	0.00	43.70	0.00	43.70	38.12	5.59	7.825		
1,400.00	1,400.00	1,400.00	1,400.00	3.02	3.02	0.00	43.70	0.00	43.70	37.67	6.03	7.242 CC, ES		
1,500.00	1,499.98	1,498.73	1,498.71	3.21	3.24	-158.75	45.04	1.05	46.69	40.24	6.45	7.241 SF		
1,600.00	1,599.84	1,596.92	1,596.76	3.39	3.45	-157.40	49.01	4.19	55.65	48.83	6.83	8.150		
1,700.00	1,699.45	1,694.05	1,693.53	3.58	3.67	-155.90	55.54	9.34	70.57	63.36	7.21	9.787		
1,800.00	1,798.70	1,789.62	1,788.42	3.78	3.90	-154.58	64.47	16.39	91.37	83.77	7.59	12.032		
1,900.00	1,897.47	1,883.17	1,880.88	4.02	4.14	-153.51	75.61	25.19	117.91	109.93	7.98	14.776		
2,000.00	1,995.62	1,974.28	1,970.44	4.29	4.40	-152.66	88.73	35.55	150.04	141.67	8.37	17.920		
2,100.00	2,093.06	2,062.57	2,056.68	4.60	4.67	-151.94	103.58	47.27	187.56	178.78	8.77	21.377		
2,200.00	2,189.64	2,147.74	2,139.28	4.97	4.97	-151.32	119.86	60.13	230.24	221.05	9.19	25.064		
2,300.00	2,285.27	2,229.53	2,217.98	5.40	5.30	-150.73	137.31	73.90	277.86	268.25	9.61	28.907		
2,400.00	2,379.82	2,307.72	2,292.61	5.90	5.63	-150.17	155.63	88.37	330.17	320.12	10.05	32.841		
2,500.00	2,473.17	2,382.16	2,363.04	6.47	5.99	-149.59	174.56	103.31	386.91	376.40	10.52	36.793		
2,600.00	2,565.21	2,460.61	2,436.82	7.10	6.40	-149.08	195.47	119.81	447.23	436.21	11.02	40.584		
2,614.53	2,578.47	2,472.04	2,447.57	7.20	6.46	-149.02	198.52	122.22	456.20	445.10	11.09	41.118		
2,700.00	2,656.38	2,539.15	2,510.69	7.80	6.83	-149.33	216.42	136.35	509.09	497.46	11.63	43.787		
2,800.00	2,747.52	2,617.67	2,584.53	8.52	7.27	-149.61	237.36	152.88	570.98	558.71	12.27	46.544		
2,900.00	2,838.67	2,696.18	2,658.37	9.26	7.72	-149.84	258.30	169.42	632.88	619.95	12.93	48.959		
3,000.00	2,929.82	2,774.70	2,732.22	10.01	8.18	-150.03	279.24	185.95	694.78	681.18	13.60	51.077		
3,100.00	3,020.97	2,853.22	2,806.06	10.77	8.65	-150.19	300.19	202.49	756.69	742.40	14.29	52.949		
3,200.00	3,112.11	2,931.73	2,879.91	11.55	9.13	-150.32	321.13	219.02	818.60	803.61	14.99	54.610		
3,300.00	3,203.26	3,010.25	2,953.75	12.33	9.61	-150.43	342.07	235.55	880.52	864.82	15.70	56.090		
3,400.00	3,294.41	3,088.77	3,027.60	13.12	10.10	-150.53	363.01	252.09	942.43	926.02	16.42	57.412		
3,500.00	3,385.55	3,167.28	3,101.44	13.91	10.59	-150.62	383.96	268.62	1,004.35	987.21	17.14	58.598		
3,600.00	3,476.70	3,245.80	3,175.28	14.71	11.09	-150.70	404.90	285.15	1,066.27	1,048.40	17.87	59.667		
3,700.00	3,567.85	3,324.32	3,249.13	15.51	11.59	-150.77	425.84	301.69	1,128.19	1,109.58	18.61	60.635		
3,800.00	3,658.99	3,402.84	3,322.97	16.31	12.09	-150.83	446.78	318.22	1,190.11	1,170.76	19.35	61.513		
3,900.00	3,750.14	3,481.35	3,396.82	17.12	12.60	-150.88	467.72	334.75	1,252.03	1,231.94	20.09	62.312		
4,000.00	3,841.29	3,559.87	3,470.66	17.93	13.11	-150.93	488.67	351.29	1,313.95	1,293.11	20.84	63.042		
4,100.00	3,932.44	3,638.39	3,544.50	18.74	13.61	-150.98	509.61	367.82	1,375.87	1,354.28	21.60	63.712		
4,200.00	4,023.58	3,716.90	3,618.35	19.55	14.13	-151.02	530.55	384.35	1,437.80	1,415.45	22.35	64.327		
4,300.00	4,114.73	3,795.42	3,692.19	20.37	14.64	-151.06	551.49	400.89	1,499.72	1,476.61	23.11	64.895		
4,400.00	4,205.88	3,873.94	3,766.04	21.18	15.15	-151.10	572.44	417.42	1,561.64	1,537.77	23.87	65.418		
4,500.00	4,297.02	3,952.45	3,839.88	22.00	15.67	-151.13	593.38	433.96	1,623.57	1,598.93	24.64	65.903		
4,600.00	4,388.17	4,030.97	3,913.73	22.82	16.18	-151.16	614.32	450.49	1,685.49	1,660.09	25.40	66.353		
4,700.00	4,479.32	4,109.49	3,987.57	23.64	16.70	-151.19	635.26	467.02	1,747.42	1,721.25	26.17	66.773		
4,800.00	4,570.47	4,188.00	4,061.41	24.46	17.22	-151.21	656.21	483.56	1,809.34	1,782.40	26.94	67.163		
4,900.00	4,661.61	4,266.52	4,135.26	25.28	17.74	-151.24	677.15	500.09	1,871.27	1,843.56	27.71	67.528		
5,000.00	4,752.76	4,345.04	4,209.10	26.10	18.26	-151.26	698.09	516.62	1,933.19	1,904.71	28.48	67.869		

CC - Min centre to center distance or convergent point, SF - min separation factor, ES - min ellipse separation



<b>Company:</b>	US ROCKIES REGION PLANNING	<b>Local Co-ordinate Reference:</b>	Well P_TALON VIEW 11-9
<b>Project:</b>	KERR MCGEE OIL & GAS ONSHORE LP	<b>TVD Reference:</b>	WELL @ 5171.00ft (Original Well Elev)
<b>Reference Site:</b>	ADAMS_TALON VIEW 7 PAD	<b>MD Reference:</b>	WELL @ 5171.00ft (Original Well Elev)
<b>Site Error:</b>	0.00ft	<b>North Reference:</b>	True
<b>Reference Well:</b>	P_TALON VIEW 11-9	<b>Survey Calculation Method:</b>	Minimum Curvature
<b>Well Error:</b>	0.00ft	<b>Output errors are at</b>	2.00 sigma
<b>Reference Wellbore</b>	P_TALON VIEW 11-9	<b>Database:</b>	EDM 2003.21 Single User Db
<b>Reference Design:</b>	PLAN #1 09-01-09 RHS	<b>Offset TVD Reference:</b>	Offset Datum

Offset Design													ADAMS_TALON VIEW 7 PAD - P_TALON VIEW 3-9 - P_TALON VIEW 3-9 - PLAN #1 09-01-09 RHS	Offset Site Error:	0.00 ft
Survey Program: 0-MWD														Offset Well Error:	0.00 ft
Reference		Offset		Semi Major Axis			Distance						Warning		
Measured Depth (ft)	Vertical Depth (ft)	Measured Depth (ft)	Vertical Depth (ft)	Reference (ft)	Offset (ft)	Highside Tooflance (°)	Offset Wellbore Centre +N/-S (ft)	+E/-W (ft)	Between Centres (ft)	Between Ellipses (ft)	Minimum Separation (ft)	Separation Factor			
5,100.00	4,843.91	4,423.55	4,282.95	26.93	18.78	-151.28	719.03	533.16	1,995.12	1,965.86	29.26	68.190			
5,200.00	4,935.05	4,502.07	4,356.79	27.75	19.30	-151.30	739.98	549.69	2,057.04	2,027.01	30.03	68.491			
5,300.00	5,026.20	4,701.19	4,546.22	28.57	20.34	-151.47	788.03	587.63	2,116.78	2,085.70	31.09	68.091			
5,400.00	5,117.35	4,919.97	4,758.70	29.40	21.21	-151.92	828.78	619.80	2,171.56	2,139.50	32.07	67.723			
5,500.00	5,208.50	5,155.20	4,990.84	30.22	21.92	-152.64	858.27	643.08	2,220.80	2,187.84	32.96	67.373			
5,600.00	5,299.64	5,405.29	5,240.13	31.05	22.41	-153.66	873.11	654.80	2,263.96	2,230.22	33.74	67.098			
5,700.00	5,390.79	5,555.96	5,390.79	31.87	22.59	-154.37	874.27	655.71	2,302.02	2,267.68	34.34	67.040			
5,800.00	5,481.94	5,647.11	5,481.94	32.70	22.69	-154.80	874.27	655.71	2,339.77	2,304.88	34.89	67.059			
5,900.00	5,573.08	5,738.26	5,573.08	33.52	22.79	-155.22	874.27	655.71	2,377.63	2,342.19	35.44	67.086			
5,953.15	5,621.53	5,786.70	5,621.53	33.96	22.85	-155.43	874.27	655.71	2,397.80	2,362.07	35.73	67.104			
6,000.00	5,664.39	5,829.56	5,664.39	34.29	22.90	-155.77	874.27	655.71	2,415.28	2,379.17	36.10	66.896			
6,100.00	5,756.87	5,922.04	5,756.87	34.87	23.00	-156.44	874.27	655.71	2,450.47	2,413.63	36.84	66.519			
6,200.00	5,850.62	6,015.79	5,850.62	35.40	23.11	-157.02	874.27	655.71	2,482.73	2,445.19	37.53	66.145			
6,300.00	5,945.53	6,110.70	5,945.53	35.90	23.22	-157.53	874.27	655.71	2,511.99	2,473.80	38.19	65.779			
6,400.00	6,041.48	6,206.65	6,041.48	36.35	23.34	-157.98	874.27	655.71	2,538.20	2,499.40	38.80	65.421			
6,500.00	6,138.35	6,303.52	6,138.35	36.75	23.46	-158.36	874.27	655.71	2,561.31	2,521.95	39.36	65.073			
6,600.00	6,236.03	6,401.20	6,236.03	37.11	23.58	-158.69	874.27	655.71	2,581.28	2,541.40	39.87	64.736			
6,700.00	6,334.40	6,499.57	6,334.40	37.42	23.70	-158.95	874.27	655.71	2,598.07	2,557.73	40.34	64.409			
6,800.00	6,433.33	6,598.50	6,433.33	37.69	23.83	-159.17	874.27	655.71	2,611.66	2,570.91	40.75	64.091			
6,900.00	6,532.71	6,697.88	6,532.71	37.91	23.95	-159.32	874.27	655.71	2,622.01	2,580.90	41.11	63.783			
7,000.00	6,632.42	6,797.59	6,632.42	38.08	24.08	-159.43	874.27	655.71	2,629.12	2,587.70	41.42	63.482			
7,100.00	6,732.33	6,897.50	6,732.33	38.20	24.21	-159.49	874.27	655.71	2,632.97	2,591.30	41.67	63.188			
7,167.68	6,800.00	6,965.17	6,800.00	38.27	24.30	-0.18	874.27	655.71	2,633.71	2,591.90	41.81	62.988			
7,200.00	6,832.32	6,997.49	6,832.32	38.29	24.34	-0.18	874.27	655.71	2,633.71	2,591.81	41.91	62.846			
7,300.00	6,932.32	7,097.49	6,932.32	38.36	24.48	-0.18	874.27	655.71	2,633.71	2,591.51	42.20	62.411			
7,400.00	7,032.32	7,197.49	7,032.32	38.44	24.61	-0.18	874.27	655.71	2,633.71	2,591.22	42.49	61.979			
7,500.00	7,132.32	7,297.49	7,132.32	38.51	24.75	-0.18	874.27	655.71	2,633.71	2,590.92	42.79	61.548			
7,600.00	7,232.32	7,397.49	7,232.32	38.59	24.88	-0.18	874.27	655.71	2,633.71	2,590.62	43.09	61.120			
7,700.00	7,332.32	7,497.49	7,332.32	38.66	25.02	-0.18	874.27	655.71	2,633.71	2,590.32	43.39	60.694			
7,800.00	7,432.32	7,597.49	7,432.32	38.74	25.16	-0.18	874.27	655.71	2,633.71	2,590.02	43.70	60.271			
7,900.00	7,532.32	7,697.49	7,532.32	38.82	25.30	-0.18	874.27	655.71	2,633.71	2,589.71	44.01	59.850			
8,000.00	7,632.32	7,797.49	7,632.32	38.90	25.44	-0.18	874.27	655.71	2,633.71	2,589.40	44.31	59.432			
8,100.00	7,732.32	7,897.49	7,732.32	38.98	25.59	-0.18	874.27	655.71	2,633.71	2,589.09	44.63	59.017			
8,200.00	7,832.32	7,997.49	7,832.32	39.06	25.73	-0.18	874.27	655.71	2,633.71	2,588.77	44.94	58.604			
8,300.00	7,932.32	8,097.49	7,932.32	39.15	25.88	-0.18	874.27	655.71	2,633.71	2,588.46	45.26	58.194			
8,400.00	8,032.32	8,197.49	8,032.32	39.23	26.02	-0.18	874.27	655.71	2,633.71	2,588.14	45.58	57.787			
8,500.00	8,132.32	8,297.49	8,132.32	39.32	26.17	-0.18	874.27	655.71	2,633.71	2,587.82	45.90	57.383			
8,600.00	8,232.32	8,397.49	8,232.32	39.40	26.32	-0.18	874.27	655.71	2,633.71	2,587.49	46.22	56.982			
8,700.00	8,332.32	8,497.49	8,332.32	39.49	26.47	-0.18	874.27	655.71	2,633.71	2,587.17	46.54	56.584			
8,800.00	8,432.32	8,597.49	8,432.32	39.58	26.62	-0.18	874.27	655.71	2,633.71	2,586.84	46.87	56.190			
8,837.85	8,470.18	8,635.35	8,470.18	39.61	26.68	-0.18	874.27	655.71	2,633.71	2,586.72	47.00	56.041			
8,865.68	8,498.00	8,649.17	8,484.00	39.64	26.70	-0.18	874.27	655.71	2,633.75	2,586.69	47.06	55.963			



<b>Company:</b>	US ROCKIES REGION PLANNING	<b>Local Co-ordinate Reference:</b>	Well P_TALON VIEW 11-9
<b>Project:</b>	KERR MCGEE OIL & GAS ONSHORE LP	<b>TVD Reference:</b>	WELL @ 5171.00ft (Original Well Elev)
<b>Reference Site:</b>	ADAMS_TALON VIEW 7 PAD	<b>MD Reference:</b>	WELL @ 5171.00ft (Original Well Elev)
<b>Site Error:</b>	0.00ft	<b>North Reference:</b>	True
<b>Reference Well:</b>	P_TALON VIEW 11-9	<b>Survey Calculation Method:</b>	Minimum Curvature
<b>Well Error:</b>	0.00ft	<b>Output errors are at</b>	2.00 sigma
<b>Reference Wellbore</b>	P_TALON VIEW 11-9	<b>Database:</b>	EDM 2003.21 Single User Db
<b>Reference Design:</b>	PLAN #1 09-01-09 RHS	<b>Offset TVD Reference:</b>	Offset Datum

Offset Design													ADAMS_TALON VIEW 7 PAD - P_TALON VIEW 5-9 - P_TALON VIEW 5-9 - PLAN #1 09-01-09 RHS	Offset Site Error:	0.00 ft
Survey Program: 0-MWD														Offset Well Error:	0.00 ft
Reference		Offset		Semi Major Axis			Distance						Warning		
Measured Depth (ft)	Vertical Depth (ft)	Measured Depth (ft)	Vertical Depth (ft)	Reference (ft)	Offset (ft)	Highside Toolface (°)	Offset Wellbore Centre +N/-S (ft)	+E/-W (ft)	Between Centres (ft)	Between Ellipses (ft)	Minimum Separation (ft)	Separation Factor			
0.00	0.00	0.00	0.00	0.00	0.00	0.00	58.27	0.00	58.27						
100.00	100.00	100.00	100.00	0.10	0.10	0.00	58.27	0.00	58.27	58.08	0.19	305.003			
200.00	200.00	200.00	200.00	0.32	0.32	0.00	58.27	0.00	58.27	57.63	0.64	90.966			
300.00	300.00	300.00	300.00	0.55	0.55	0.00	58.27	0.00	58.27	57.18	1.09	53.454			
400.00	400.00	400.00	400.00	0.77	0.77	0.00	58.27	0.00	58.27	56.73	1.54	37.847			
500.00	500.00	500.00	500.00	0.99	0.99	0.00	58.27	0.00	58.27	56.28	1.99	29.294			
600.00	600.00	600.00	600.00	1.22	1.22	0.00	58.27	0.00	58.27	55.83	2.44	23.894			
700.00	700.00	700.00	700.00	1.44	1.44	0.00	58.27	0.00	58.27	55.38	2.89	20.175			
800.00	800.00	800.00	800.00	1.67	1.67	0.00	58.27	0.00	58.27	54.93	3.34	17.458			
900.00	900.00	900.00	900.00	1.89	1.89	0.00	58.27	0.00	58.27	54.48	3.79	15.386			
1,000.00	1,000.00	1,000.00	1,000.00	2.12	2.12	0.00	58.27	0.00	58.27	54.03	4.24	13.753			
1,100.00	1,100.00	1,100.00	1,100.00	2.34	2.34	0.00	58.27	0.00	58.27	53.58	4.69	12.434			
1,200.00	1,200.00	1,200.00	1,200.00	2.57	2.57	0.00	58.27	0.00	58.27	53.14	5.14	11.346			
1,300.00	1,300.00	1,300.00	1,300.00	2.79	2.79	0.00	58.27	0.00	58.27	52.69	5.59	10.433			
1,400.00	1,400.00	1,400.00	1,400.00	3.02	3.02	0.00	58.27	0.00	58.27	52.24	6.03	9.656 CC, ES			
1,500.00	1,499.98	1,501.22	1,501.20	3.21	3.22	-161.29	57.17	-1.41	58.85	52.42	6.43	9.148			
1,600.00	1,599.84	1,602.18	1,602.01	3.39	3.41	-166.95	53.89	-5.62	60.99	54.21	6.79	8.989 SF			
1,700.00	1,699.45	1,702.61	1,702.05	3.58	3.61	-175.34	48.45	-12.59	65.74	58.59	7.14	9.202			
1,800.00	1,798.70	1,802.27	1,800.95	3.78	3.83	175.07	40.93	-22.23	74.33	66.81	7.52	9.887			
1,900.00	1,897.47	1,900.91	1,898.36	4.02	4.07	165.87	31.41	-34.44	87.66	79.74	7.92	11.065			
2,000.00	1,995.62	1,998.30	1,993.96	4.29	4.34	157.99	19.99	-49.09	106.03	97.66	8.37	12.662			
2,100.00	2,093.06	2,094.24	2,087.47	4.60	4.65	151.65	6.79	-66.01	129.32	120.44	8.89	14.552			
2,200.00	2,189.64	2,188.53	2,178.61	4.97	5.01	146.66	-8.05	-85.03	157.25	147.78	9.47	16.601			
2,300.00	2,285.27	2,281.24	2,267.41	5.40	5.41	142.74	-24.41	-106.02	189.50	179.37	10.13	18.701			
2,400.00	2,379.82	2,374.35	2,356.26	5.90	5.85	140.01	-41.54	-127.97	225.16	214.29	10.87	20.716			
2,500.00	2,473.17	2,466.61	2,444.31	6.47	6.31	138.37	-58.50	-149.73	263.47	251.82	11.65	22.609			
2,600.00	2,565.21	2,557.91	2,531.43	7.10	6.78	137.44	-75.29	-171.25	304.22	291.73	12.48	24.369			
2,614.53	2,578.47	2,571.09	2,544.01	7.20	6.85	137.35	-77.71	-174.36	310.33	297.73	12.61	24.614			
2,700.00	2,656.38	2,648.56	2,617.93	7.80	7.27	137.36	-91.96	-192.62	346.46	333.04	13.42	25.826			
2,800.00	2,747.52	2,739.18	2,704.41	8.52	7.76	137.38	-108.62	-213.99	388.72	374.34	14.39	27.019			
2,900.00	2,838.67	2,829.81	2,790.89	9.26	8.26	137.39	-125.29	-235.36	430.99	415.61	15.38	28.018			
3,000.00	2,929.82	2,920.44	2,877.38	10.01	8.78	137.40	-141.95	-256.73	473.26	456.86	16.40	28.862			
3,100.00	3,020.97	3,011.07	2,963.86	10.77	9.30	137.41	-158.62	-278.09	515.52	498.09	17.43	29.580			
3,200.00	3,112.11	3,101.70	3,050.34	11.55	9.82	137.42	-175.28	-299.46	557.79	539.32	18.47	30.197			
3,300.00	3,203.26	3,192.33	3,136.82	12.33	10.35	137.42	-191.95	-320.83	600.05	580.53	19.53	30.730			
3,400.00	3,294.41	3,282.96	3,223.31	13.12	10.88	137.43	-208.61	-342.20	642.32	621.73	20.59	31.195			
3,500.00	3,385.55	3,373.59	3,309.79	13.91	11.42	137.43	-225.28	-363.56	684.59	662.92	21.66	31.604			
3,600.00	3,476.70	3,464.21	3,396.27	14.71	11.96	137.44	-241.94	-384.93	726.85	704.11	22.74	31.965			
3,700.00	3,567.85	3,554.84	3,482.76	15.51	12.50	137.44	-258.60	-406.30	769.12	745.30	23.82	32.286			
3,800.00	3,658.99	3,645.47	3,569.24	16.31	13.05	137.44	-275.27	-427.67	811.38	786.48	24.91	32.574			
3,900.00	3,750.14	3,736.10	3,655.72	17.12	13.59	137.45	-291.93	-449.03	853.65	827.65	26.00	32.832			
4,000.00	3,841.29	3,826.73	3,742.20	17.93	14.14	137.45	-308.60	-470.40	895.92	868.82	27.09	33.066			
4,100.00	3,932.44	3,917.36	3,828.69	18.74	14.69	137.45	-325.26	-491.77	938.18	909.99	28.19	33.279			
4,200.00	4,023.58	4,007.99	3,915.17	19.55	15.24	137.45	-341.93	-513.14	980.45	951.16	29.29	33.473			
4,300.00	4,114.73	4,098.62	4,001.65	20.37	15.79	137.46	-358.59	-534.51	1,022.71	992.32	30.39	33.650			
4,400.00	4,205.88	4,189.70	4,088.57	21.18	16.35	137.46	-375.34	-555.98	1,064.98	1,033.48	31.50	33.813			
4,500.00	4,297.02	4,295.40	4,190.03	22.00	16.82	137.57	-393.56	-579.34	1,106.59	1,074.08	32.51	34.035			
4,600.00	4,388.17	4,402.16	4,293.54	22.82	17.25	137.87	-409.61	-599.91	1,146.97	1,113.50	33.46	34.275			
4,700.00	4,479.32	4,509.68	4,398.71	23.64	17.63	138.35	-423.36	-617.55	1,186.13	1,151.78	34.35	34.536			
4,800.00	4,570.47	4,617.67	4,505.09	24.46	17.97	138.99	-434.72	-632.12	1,224.13	1,188.98	35.15	34.823			
4,900.00	4,661.61	4,725.82	4,612.27	25.28	18.26	139.76	-443.62	-643.53	1,261.03	1,225.15	35.88	35.144			
5,000.00	4,752.76	4,833.82	4,719.76	26.10	18.50	140.67	-450.02	-651.74	1,296.93	1,260.40	36.53	35.504			

CC - Min centre to center distance or convergent point, SF - min separation factor, ES - min ellipse separation



<b>Company:</b>	US ROCKIES REGION PLANNING	<b>Local Co-ordinate Reference:</b>	Well P_TALON VIEW 11-9
<b>Project:</b>	KERR MCGEE OIL & GAS ONSHORE LP	<b>TVD Reference:</b>	WELL @ 5171.00ft (Original Well Elev)
<b>Reference Site:</b>	ADAMS_TALON VIEW 7 PAD	<b>MD Reference:</b>	WELL @ 5171.00ft (Original Well Elev)
<b>Site Error:</b>	0.00ft	<b>North Reference:</b>	True
<b>Reference Well:</b>	P_TALON VIEW 11-9	<b>Survey Calculation Method:</b>	Minimum Curvature
<b>Well Error:</b>	0.00ft	<b>Output errors are at</b>	2.00 sigma
<b>Reference Wellbore</b>	P_TALON VIEW 11-9	<b>Database:</b>	EDM 2003.21 Single User Db
<b>Reference Design:</b>	PLAN #1 09-01-09 RHS	<b>Offset TVD Reference:</b>	Offset Datum

Offset Design													ADAMS_TALON VIEW 7 PAD - P_TALON VIEW 5-9 - P_TALON VIEW 5-9 - PLAN #1 09-01-09 RHS	Offset Site Error:	0.00 ft
Survey Program: 0-MWD														Offset Well Error:	0.00 ft
Reference		Offset		Semi Major Axis			Distance						Warning		
Measured Depth (ft)	Vertical Depth (ft)	Measured Depth (ft)	Vertical Depth (ft)	Reference (ft)	Offset (ft)	Highside Tooface (°)	Offset Wellbore Centre +N/-S (ft)	+E/-W (ft)	Between Centres (ft)	Between Ellipses (ft)	Minimum Separation (ft)	Separation Factor			
5,100.00	4,843.91	4,941.38	4,827.12	26.93	18.69	141.69	-453.92	-656.73	1,331.94	1,294.85	37.09	35.908			
5,200.00	4,935.05	5,048.18	4,933.90	27.75	18.84	142.81	-455.33	-658.54	1,366.19	1,328.61	37.58	36.357			
5,300.00	5,026.20	5,140.49	5,026.20	28.57	18.95	143.81	-455.33	-658.55	1,400.23	1,362.19	38.03	36.818			
5,400.00	5,117.35	5,231.63	5,117.35	29.40	19.05	144.75	-455.33	-658.55	1,434.63	1,396.15	38.48	37.287			
5,500.00	5,208.50	5,322.78	5,208.50	30.22	19.16	145.65	-455.33	-658.55	1,469.38	1,430.47	38.91	37.763			
5,600.00	5,299.64	5,413.93	5,299.64	31.05	19.27	146.51	-455.33	-658.55	1,504.45	1,465.12	39.34	38.245			
5,700.00	5,390.79	5,505.07	5,390.79	31.87	19.38	147.33	-455.33	-658.55	1,539.83	1,500.07	39.76	38.732			
5,800.00	5,481.94	5,596.22	5,481.94	32.70	19.50	148.12	-455.33	-658.55	1,575.48	1,535.31	40.17	39.221			
5,900.00	5,573.08	5,687.37	5,573.08	33.52	19.61	148.88	-455.33	-658.55	1,611.40	1,570.82	40.58	39.713			
5,953.15	5,621.53	5,735.81	5,621.53	33.96	19.67	149.27	-455.33	-658.55	1,630.58	1,589.79	40.79	39.975			
6,000.00	5,664.39	5,778.67	5,664.39	34.29	19.73	149.77	-455.33	-658.55	1,647.25	1,606.23	41.01	40.164			
6,100.00	5,756.87	5,871.15	5,756.87	34.87	19.85	150.77	-455.33	-658.55	1,680.88	1,639.45	41.43	40.574			
6,200.00	5,850.62	5,964.90	5,850.62	35.40	19.97	151.64	-455.33	-658.55	1,711.79	1,669.97	41.82	40.928			
6,300.00	5,945.53	6,059.81	5,945.53	35.90	20.09	152.40	-455.33	-658.55	1,739.91	1,697.71	42.20	41.229			
6,400.00	6,041.48	6,155.76	6,041.48	36.35	20.22	153.05	-455.33	-658.55	1,765.15	1,722.58	42.56	41.471			
6,500.00	6,138.35	6,252.63	6,138.35	36.75	20.35	153.62	-455.33	-658.55	1,787.44	1,744.50	42.94	41.625			
6,600.00	6,236.03	6,350.31	6,236.03	37.11	20.49	154.09	-455.33	-658.55	1,806.73	1,763.44	43.29	41.737			
6,700.00	6,334.40	6,448.68	6,334.40	37.42	20.62	154.48	-455.33	-658.55	1,822.97	1,779.37	43.60	41.810			
6,800.00	6,433.33	6,547.62	6,433.33	37.69	20.76	154.79	-455.33	-658.55	1,836.12	1,792.24	43.88	41.845			
6,900.00	6,532.71	6,647.00	6,532.71	37.91	20.90	155.02	-455.33	-658.55	1,846.15	1,802.03	44.12	41.842			
7,000.00	6,632.42	6,746.70	6,632.42	38.08	21.04	155.17	-455.33	-658.55	1,853.04	1,808.72	44.33	41.804			
7,100.00	6,732.33	6,846.61	6,732.33	38.20	21.19	155.26	-455.33	-658.55	1,856.77	1,812.28	44.50	41.730			
7,167.68	6,800.00	6,914.29	6,800.00	38.27	21.28	-45.41	-455.33	-658.55	1,857.50	1,812.90	44.59	41.655			
7,200.00	6,832.32	6,946.61	6,832.32	38.29	21.33	-45.41	-455.33	-658.55	1,857.50	1,812.82	44.68	41.574			
7,300.00	6,932.32	7,046.61	6,932.32	38.36	21.48	-45.41	-455.33	-658.55	1,857.50	1,812.56	44.94	41.332			
7,400.00	7,032.32	7,146.61	7,032.32	38.44	21.63	-45.41	-455.33	-658.55	1,857.50	1,812.29	45.21	41.090			
7,500.00	7,132.32	7,246.61	7,132.32	38.51	21.78	-45.41	-455.33	-658.55	1,857.50	1,812.02	45.47	40.848			
7,600.00	7,232.32	7,346.61	7,232.32	38.59	21.93	-45.41	-455.33	-658.55	1,857.50	1,811.75	45.74	40.607			
7,700.00	7,332.32	7,446.61	7,332.32	38.66	22.08	-45.41	-455.33	-658.55	1,857.50	1,811.48	46.02	40.366			
7,800.00	7,432.32	7,546.61	7,432.32	38.74	22.23	-45.41	-455.33	-658.55	1,857.50	1,811.20	46.29	40.125			
7,900.00	7,532.32	7,646.61	7,532.32	38.82	22.39	-45.41	-455.33	-658.55	1,857.50	1,810.93	46.57	39.885			
8,000.00	7,632.32	7,746.61	7,632.32	38.90	22.54	-45.41	-455.33	-658.55	1,857.50	1,810.65	46.85	39.646			
8,100.00	7,732.32	7,846.61	7,732.32	38.98	22.70	-45.41	-455.33	-658.55	1,857.50	1,810.36	47.14	39.407			
8,200.00	7,832.32	7,946.61	7,832.32	39.06	22.86	-45.41	-455.33	-658.55	1,857.50	1,810.08	47.42	39.169			
8,300.00	7,932.32	8,046.61	7,932.32	39.15	23.02	-45.41	-455.33	-658.55	1,857.50	1,809.79	47.71	38.932			
8,400.00	8,032.32	8,146.61	8,032.32	39.23	23.18	-45.41	-455.33	-658.55	1,857.50	1,809.50	48.00	38.696			
8,441.19	8,073.51	8,187.79	8,073.51	39.27	23.24	-45.41	-455.33	-658.55	1,857.50	1,809.37	48.12	38.599			
8,500.00	8,132.32	8,203.29	8,089.00	39.32	23.27	-45.41	-455.33	-658.55	1,858.00	1,809.78	48.23	38.527			
8,600.00	8,232.32	8,203.29	8,089.00	39.40	23.27	-45.41	-455.33	-658.55	1,863.02	1,814.66	48.36	38.524			
8,700.00	8,332.32	8,203.29	8,089.00	39.49	23.27	-45.41	-455.33	-658.55	1,873.37	1,824.87	48.49	38.630			
8,800.00	8,432.32	8,203.29	8,089.00	39.58	23.27	-45.41	-455.33	-658.55	1,888.96	1,840.33	48.63	38.843			
8,865.68	8,498.00	8,203.29	8,089.00	39.64	23.27	-45.41	-455.33	-658.55	1,901.99	1,853.27	48.72	39.039			



<b>Company:</b>	US ROCKIES REGION PLANNING	<b>Local Co-ordinate Reference:</b>	Well P_TALON VIEW 11-9
<b>Project:</b>	KERR MCGEE OIL & GAS ONSHORE LP	<b>TVD Reference:</b>	WELL @ 5171.00ft (Original Well Elev)
<b>Reference Site:</b>	ADAMS_TALON VIEW 7 PAD	<b>MD Reference:</b>	WELL @ 5171.00ft (Original Well Elev)
<b>Site Error:</b>	0.00ft	<b>North Reference:</b>	True
<b>Reference Well:</b>	P_TALON VIEW 11-9	<b>Survey Calculation Method:</b>	Minimum Curvature
<b>Well Error:</b>	0.00ft	<b>Output errors are at</b>	2.00 sigma
<b>Reference Wellbore</b>	P_TALON VIEW 11-9	<b>Database:</b>	EDM 2003.21 Single User Db
<b>Reference Design:</b>	PLAN #1 09-01-09 RHS	<b>Offset TVD Reference:</b>	Offset Datum

Offset Design												ADAMS_TALON VIEW 7 PAD - P_TALON VIEW 6-9 - P_TALON VIEW 6-9 - PLAN #1 09-01-09 RH	Offset Site Error:	0.00 ft
Survey Program: 0-MWD													Offset Well Error:	0.00 ft
Reference		Offset		Semi Major Axis			Distance					Warning		
Measured Depth (ft)	Vertical Depth (ft)	Measured Depth (ft)	Vertical Depth (ft)	Reference (ft)	Offset (ft)	Highside Tooface (°)	Offset Wellbore Centre +N/-S (ft)	+E/-W (ft)	Between Centres (ft)	Between Ellipses (ft)	Minimum Separation (ft)	Separation Factor		
0.00	0.00	0.00	0.00	0.00	0.00	0.00	14.56	0.00	14.56					
100.00	100.00	100.00	100.00	0.10	0.10	0.00	14.56	0.00	14.56	14.37	0.19	76.201		
200.00	200.00	200.00	200.00	0.32	0.32	0.00	14.56	0.00	14.56	13.92	0.64	22.727		
300.00	300.00	300.00	300.00	0.55	0.55	0.00	14.56	0.00	14.56	13.47	1.09	13.355		
400.00	400.00	400.00	400.00	0.77	0.77	0.00	14.56	0.00	14.56	13.02	1.54	9.456		
500.00	500.00	500.00	500.00	0.99	0.99	0.00	14.56	0.00	14.56	12.57	1.99	7.319		
600.00	600.00	600.00	600.00	1.22	1.22	0.00	14.56	0.00	14.56	12.12	2.44	5.970		
700.00	700.00	700.00	700.00	1.44	1.44	0.00	14.56	0.00	14.56	11.67	2.89	5.041		
800.00	800.00	800.00	800.00	1.67	1.67	0.00	14.56	0.00	14.56	11.22	3.34	4.362		
900.00	900.00	900.00	900.00	1.89	1.89	0.00	14.56	0.00	14.56	10.77	3.79	3.844		
1,000.00	1,000.00	1,000.00	1,000.00	2.12	2.12	0.00	14.56	0.00	14.56	10.32	4.24	3.436		
1,100.00	1,100.00	1,100.00	1,100.00	2.34	2.34	0.00	14.56	0.00	14.56	9.87	4.69	3.107		
1,200.00	1,200.00	1,200.00	1,200.00	2.57	2.57	0.00	14.56	0.00	14.56	9.42	5.14	2.835		
1,300.00	1,300.00	1,300.00	1,300.00	2.79	2.79	0.00	14.56	0.00	14.56	8.97	5.59	2.606		
1,400.00	1,400.00	1,400.00	1,400.00	3.02	3.02	0.00	14.56	0.00	14.56	8.52	6.03	2.412 CC, ES		
1,500.00	1,499.98	1,500.28	1,500.26	3.21	3.22	-156.22	13.55	1.44	15.21	8.78	6.43	2.364 SF		
1,600.00	1,599.84	1,600.50	1,600.33	3.39	3.41	-148.43	10.54	5.75	17.39	10.60	6.79	2.561		
1,700.00	1,699.45	1,700.59	1,700.04	3.58	3.61	-139.24	5.53	12.91	21.52	14.35	7.17	3.003		
1,800.00	1,798.70	1,800.49	1,799.18	3.78	3.83	-131.21	-1.46	22.90	27.87	20.30	7.58	3.678		
1,900.00	1,897.47	1,900.13	1,897.59	4.02	4.08	-125.11	-10.40	35.68	36.49	28.45	8.04	4.537		
2,000.00	1,995.62	1,999.47	1,995.10	4.29	4.36	-120.69	-21.26	51.21	47.32	38.74	8.58	5.517		
2,100.00	2,093.06	2,098.43	2,091.53	4.60	4.68	-117.49	-34.00	69.42	60.27	51.07	9.20	6.554		
2,200.00	2,189.64	2,196.98	2,186.74	4.97	5.06	-115.12	-48.58	90.26	75.29	65.37	9.91	7.594		
2,300.00	2,285.27	2,295.41	2,281.14	5.40	5.49	-113.83	-64.55	113.09	92.18	81.45	10.73	8.590		
2,400.00	2,379.82	2,393.70	2,375.36	5.90	5.95	-114.42	-80.58	136.01	110.52	98.90	11.61	9.515		
2,500.00	2,473.17	2,491.61	2,469.23	6.47	6.43	-116.13	-96.56	158.85	130.36	117.81	12.55	10.390		
2,600.00	2,565.21	2,589.03	2,562.62	7.10	6.92	-118.45	-112.45	181.57	151.94	138.43	13.51	11.247		
2,614.53	2,578.47	2,603.14	2,576.14	7.20	7.00	-118.82	-114.75	184.86	155.23	141.58	13.65	11.372		
2,700.00	2,656.38	2,686.08	2,655.65	7.80	7.43	-121.06	-128.28	204.20	174.87	160.36	14.51	12.049		
2,800.00	2,747.52	2,783.12	2,748.69	8.52	7.95	-123.13	-144.11	226.84	198.11	182.55	15.55	12.738		
2,900.00	2,838.67	2,880.17	2,841.72	9.26	8.47	-124.76	-159.94	249.47	221.53	204.92	16.61	13.338		
3,000.00	2,929.82	2,977.21	2,934.75	10.01	9.01	-126.08	-175.77	272.10	245.09	227.41	17.68	13.863		
3,100.00	3,020.97	3,074.26	3,027.78	10.77	9.55	-127.16	-191.61	294.74	268.76	250.00	18.76	14.325		
3,200.00	3,112.11	3,171.30	3,120.81	11.55	10.09	-128.07	-207.44	317.37	292.50	272.65	19.85	14.734		
3,300.00	3,203.26	3,268.34	3,213.84	12.33	10.64	-128.85	-223.27	340.00	316.30	295.35	20.95	15.097		
3,400.00	3,294.41	3,365.39	3,306.87	13.12	11.20	-129.52	-239.10	362.63	340.15	318.09	22.06	15.421		
3,500.00	3,385.55	3,462.43	3,399.90	13.91	11.75	-130.10	-254.93	385.27	364.03	340.86	23.17	15.711		
3,600.00	3,476.70	3,559.48	3,492.93	14.71	12.31	-130.60	-270.76	407.90	387.95	363.66	24.29	15.973		
3,700.00	3,567.85	3,656.52	3,585.96	15.51	12.88	-131.05	-286.59	430.53	411.89	386.48	25.41	16.210		
3,800.00	3,658.99	3,753.57	3,678.99	16.31	13.44	-131.45	-302.43	453.17	435.85	409.32	26.53	16.426		
3,900.00	3,750.14	3,850.61	3,772.02	17.12	14.01	-131.81	-318.26	475.80	459.83	432.17	27.66	16.622		
4,000.00	3,841.29	3,947.65	3,865.05	17.93	14.58	-132.13	-334.09	498.43	483.83	455.03	28.80	16.802		
4,100.00	3,932.44	4,044.70	3,958.08	18.74	15.14	-132.42	-349.92	521.06	507.84	477.91	29.93	16.967		
4,200.00	4,023.58	4,141.74	4,051.11	19.55	15.72	-132.69	-365.75	543.70	531.86	500.79	31.07	17.120		
4,300.00	4,114.73	4,238.48	4,143.85	20.37	16.28	-132.93	-381.53	566.25	555.89	523.69	32.20	17.265		
4,400.00	4,205.88	4,331.87	4,233.87	21.18	16.72	-133.33	-395.77	586.61	580.29	547.11	33.18	17.490		
4,500.00	4,297.02	4,424.64	4,324.05	22.00	17.08	-133.98	-408.24	604.44	605.34	571.31	34.03	17.790		
4,600.00	4,388.17	4,516.59	4,414.08	22.82	17.41	-134.84	-418.95	619.75	631.14	596.36	34.78	18.147		
4,700.00	4,479.32	4,607.55	4,503.68	23.64	17.70	-135.89	-427.91	632.55	657.80	622.37	35.44	18.563		
4,800.00	4,570.47	4,700.00	4,595.22	24.46	17.96	-137.13	-435.34	643.17	685.45	649.45	35.99	19.043		
4,900.00	4,661.61	4,785.85	4,680.55	25.28	18.16	-138.40	-440.71	650.86	714.20	677.73	36.46	19.587		
5,000.00	4,752.76	4,872.91	4,767.33	26.10	18.33	-139.80	-444.67	656.52	744.19	707.35	36.84	20.199		

CC - Min centre to center distance or convergent point, SF - min separation factor, ES - min ellipse separation



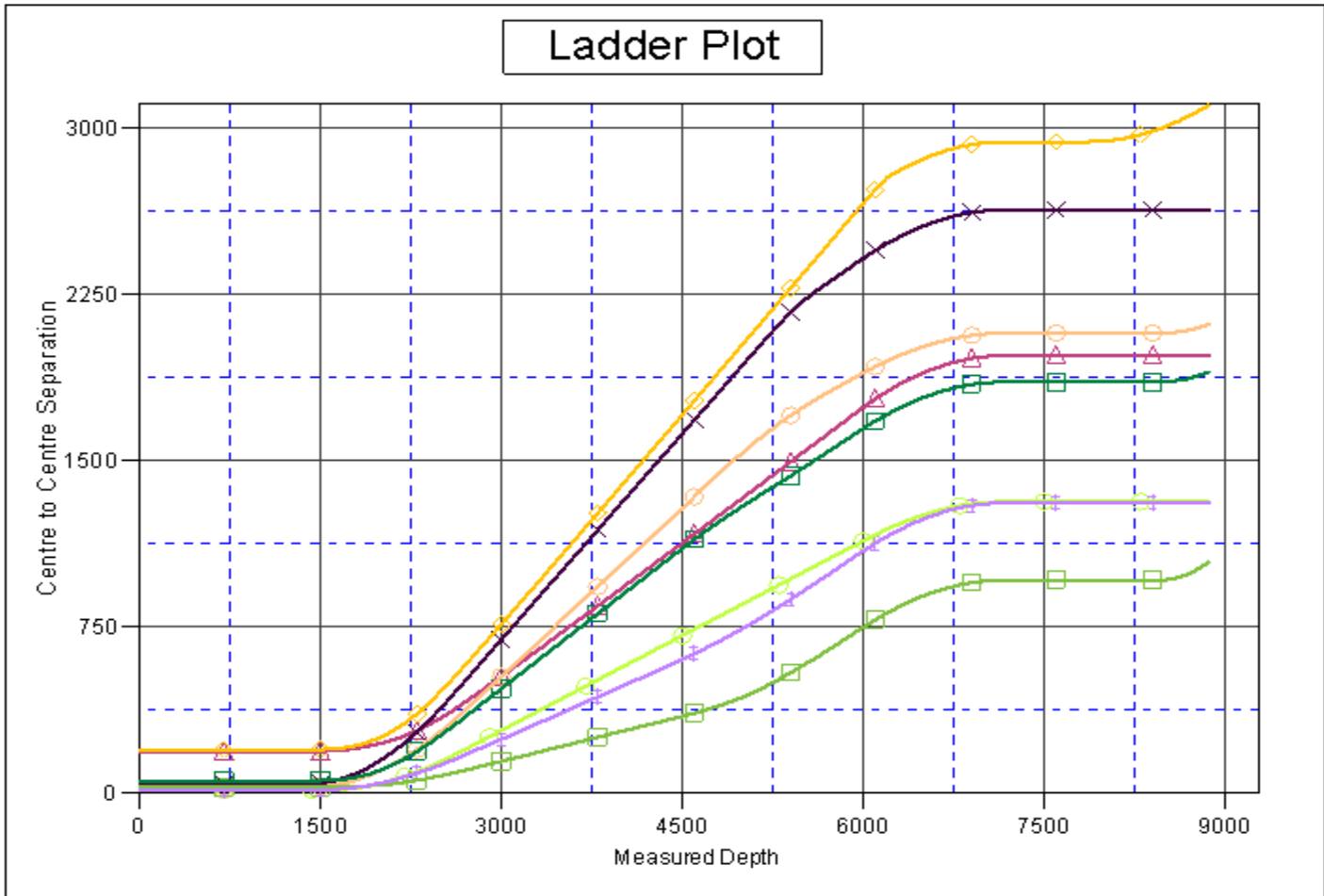
<b>Company:</b>	US ROCKIES REGION PLANNING	<b>Local Co-ordinate Reference:</b>	Well P_TALON VIEW 11-9
<b>Project:</b>	KERR MCGEE OIL & GAS ONSHORE LP	<b>TVD Reference:</b>	WELL @ 5171.00ft (Original Well Elev)
<b>Reference Site:</b>	ADAMS_TALON VIEW 7 PAD	<b>MD Reference:</b>	WELL @ 5171.00ft (Original Well Elev)
<b>Site Error:</b>	0.00ft	<b>North Reference:</b>	True
<b>Reference Well:</b>	P_TALON VIEW 11-9	<b>Survey Calculation Method:</b>	Minimum Curvature
<b>Well Error:</b>	0.00ft	<b>Output errors are at</b>	2.00 sigma
<b>Reference Wellbore</b>	P_TALON VIEW 11-9	<b>Database:</b>	EDM 2003.21 Single User Db
<b>Reference Design:</b>	PLAN #1 09-01-09 RHS	<b>Offset TVD Reference:</b>	Offset Datum

Offset Design													ADAMS_TALON VIEW 7 PAD - P_TALON VIEW 6-9 - P_TALON VIEW 6-9 - PLAN #1 09-01-09 RH	Offset Site Error:	0.00 ft
Survey Program: 0-MWD														Offset Well Error:	0.00 ft
Reference		Offset		Semi Major Axis			Distance						Warning		
Measured Depth (ft)	Vertical Depth (ft)	Measured Depth (ft)	Vertical Depth (ft)	Reference (ft)	Offset (ft)	Highside Toolface (°)	Offset Wellbore Centre +N/-S (ft)	+E/-W (ft)	Between Centres (ft)	Between Ellipses (ft)	Minimum Separation (ft)	Separation Factor			
5,100.00	4,843.91	4,958.40	4,852.71	26.93	18.47	-141.27	-447.08	659.97	775.57	738.42	37.14	20.881			
5,200.00	4,935.05	5,042.22	4,936.51	27.75	18.59	-142.78	-448.03	661.32	808.43	771.06	37.37	21.631			
5,300.00	5,026.20	5,131.91	5,026.20	28.57	18.70	-144.40	-448.05	661.35	842.55	805.02	37.53	22.449			
5,400.00	5,117.35	5,223.05	5,117.35	29.40	18.81	-145.92	-448.05	661.35	877.29	839.60	37.69	23.274			
5,500.00	5,208.50	5,314.20	5,208.50	30.22	18.92	-147.33	-448.05	661.35	912.56	874.69	37.87	24.098			
5,600.00	5,299.64	5,405.35	5,299.64	31.05	19.03	-148.64	-448.05	661.35	948.30	910.25	38.05	24.919			
5,700.00	5,390.79	5,496.49	5,390.79	31.87	19.14	-149.86	-448.05	661.35	984.47	946.21	38.25	25.735			
5,800.00	5,481.94	5,587.64	5,481.94	32.70	19.26	-151.00	-448.05	661.35	1,021.01	982.54	38.47	26.542			
5,900.00	5,573.08	5,678.79	5,573.08	33.52	19.38	-152.06	-448.05	661.35	1,057.88	1,019.19	38.69	27.340			
5,953.15	5,621.53	5,727.23	5,621.53	33.96	19.44	-152.59	-448.05	661.35	1,077.61	1,038.79	38.82	27.759			
6,000.00	5,664.39	5,770.09	5,664.39	34.29	19.50	-153.21	-448.05	661.35	1,094.75	1,055.81	38.94	28.116			
6,100.00	5,756.87	5,862.57	5,756.87	34.87	19.62	-154.38	-448.05	661.35	1,129.36	1,090.20	39.17	28.836			
6,200.00	5,850.62	5,956.32	5,850.62	35.40	19.75	-155.40	-448.05	661.35	1,161.21	1,121.79	39.41	29.464			
6,300.00	5,945.53	6,051.23	5,945.53	35.90	19.87	-156.27	-448.05	661.35	1,190.18	1,150.51	39.67	30.006			
6,400.00	6,041.48	6,147.18	6,041.48	36.35	20.01	-157.01	-448.05	661.35	1,216.19	1,176.27	39.92	30.466			
6,500.00	6,138.35	6,244.06	6,138.35	36.75	20.14	-157.64	-448.05	661.35	1,239.17	1,199.00	40.17	30.849			
6,600.00	6,236.03	6,341.74	6,236.03	37.11	20.28	-158.16	-448.05	661.35	1,259.05	1,218.65	40.41	31.160			
6,700.00	6,334.40	6,440.10	6,334.40	37.42	20.41	-158.58	-448.05	661.35	1,275.79	1,235.17	40.63	31.403			
6,800.00	6,433.33	6,539.04	6,433.33	37.69	20.56	-158.92	-448.05	661.35	1,289.35	1,248.52	40.83	31.580			
6,900.00	6,532.71	6,638.42	6,532.71	37.91	20.70	-159.17	-448.05	661.35	1,299.70	1,258.69	41.01	31.693			
7,000.00	6,632.42	6,738.12	6,632.42	38.08	20.84	-159.33	-448.05	661.35	1,306.80	1,265.63	41.16	31.746			
7,100.00	6,732.33	6,838.03	6,732.33	38.20	20.99	-159.42	-448.05	661.35	1,310.64	1,269.35	41.30	31.738			
7,167.68	6,800.00	6,905.71	6,800.00	38.27	21.09	-0.12	-448.05	661.35	1,311.39	1,270.02	41.37	31.698			
7,200.00	6,832.32	6,938.03	6,832.32	38.29	21.14	-0.12	-448.05	661.35	1,311.39	1,269.92	41.47	31.626			
7,300.00	6,932.32	7,038.03	6,932.32	38.36	21.29	-0.12	-448.05	661.35	1,311.39	1,269.63	41.76	31.405			
7,400.00	7,032.32	7,138.03	7,032.32	38.44	21.44	-0.12	-448.05	661.35	1,311.39	1,269.34	42.05	31.186			
7,500.00	7,132.32	7,238.03	7,132.32	38.51	21.59	-0.12	-448.05	661.35	1,311.39	1,269.04	42.35	30.968			
7,600.00	7,232.32	7,338.03	7,232.32	38.59	21.75	-0.12	-448.05	661.35	1,311.39	1,268.74	42.65	30.751			
7,700.00	7,332.32	7,438.03	7,332.32	38.66	21.90	-0.12	-448.05	661.35	1,311.39	1,268.44	42.95	30.535			
7,800.00	7,432.32	7,538.03	7,432.32	38.74	22.06	-0.12	-448.05	661.35	1,311.39	1,268.14	43.25	30.320			
7,900.00	7,532.32	7,638.03	7,532.32	38.82	22.21	-0.12	-448.05	661.35	1,311.39	1,267.83	43.56	30.107			
8,000.00	7,632.32	7,738.03	7,632.32	38.90	22.37	-0.12	-448.05	661.35	1,311.39	1,267.52	43.87	29.895			
8,100.00	7,732.32	7,838.03	7,732.32	38.98	22.53	-0.12	-448.05	661.35	1,311.39	1,267.21	44.18	29.684			
8,200.00	7,832.32	7,938.03	7,832.32	39.06	22.69	-0.12	-448.05	661.35	1,311.39	1,266.90	44.49	29.475			
8,300.00	7,932.32	8,038.03	7,932.32	39.15	22.85	-0.12	-448.05	661.35	1,311.39	1,266.58	44.81	29.267			
8,400.00	8,032.32	8,138.03	8,032.32	39.23	23.02	-0.12	-448.05	661.35	1,311.39	1,266.26	45.13	29.060			
8,500.00	8,132.32	8,238.03	8,132.32	39.32	23.18	-0.12	-448.05	661.35	1,311.39	1,265.94	45.45	28.856			
8,600.00	8,232.32	8,338.03	8,232.32	39.40	23.35	-0.12	-448.05	661.35	1,311.39	1,265.62	45.77	28.652			
8,700.00	8,332.32	8,438.03	8,332.32	39.49	23.51	-0.12	-448.05	661.35	1,311.39	1,265.30	46.09	28.450			
8,800.00	8,432.32	8,538.03	8,432.32	39.58	23.68	-0.12	-448.05	661.35	1,311.39	1,264.97	46.42	28.250			
8,865.68	8,498.00	8,603.71	8,498.00	39.64	23.79	-0.12	-448.05	661.35	1,311.39	1,264.75	46.64	28.120			



<b>Company:</b>	US ROCKIES REGION PLANNING	<b>Local Co-ordinate Reference:</b>	Well P_TALON VIEW 11-9
<b>Project:</b>	KERR MCGEE OIL & GAS ONSHORE LP	<b>TVD Reference:</b>	WELL @ 5171.00ft (Original Well Elev)
<b>Reference Site:</b>	ADAMS_TALON VIEW 7 PAD	<b>MD Reference:</b>	WELL @ 5171.00ft (Original Well Elev)
<b>Site Error:</b>	0.00ft	<b>North Reference:</b>	True
<b>Reference Well:</b>	P_TALON VIEW 11-9	<b>Survey Calculation Method:</b>	Minimum Curvature
<b>Well Error:</b>	0.00ft	<b>Output errors are at</b>	2.00 sigma
<b>Reference Wellbore</b>	P_TALON VIEW 11-9	<b>Database:</b>	EDM 2003.21 Single User Db
<b>Reference Design:</b>	PLAN #1 09-01-09 RHS	<b>Offset TVD Reference:</b>	Offset Datum

Reference Depths are relative to WELL @ 5171.00ft (Original Well Elev) Coordinates are relative to: P\_TALON VIEW 11-9  
 Offset Depths are relative to Offset Datum Coordinate System is US State Plane 1983, Colorado Northern Zone  
 Central Meridian is 105° 30' 0.000 W ° Grid Convergence at Surface is: 0.39°



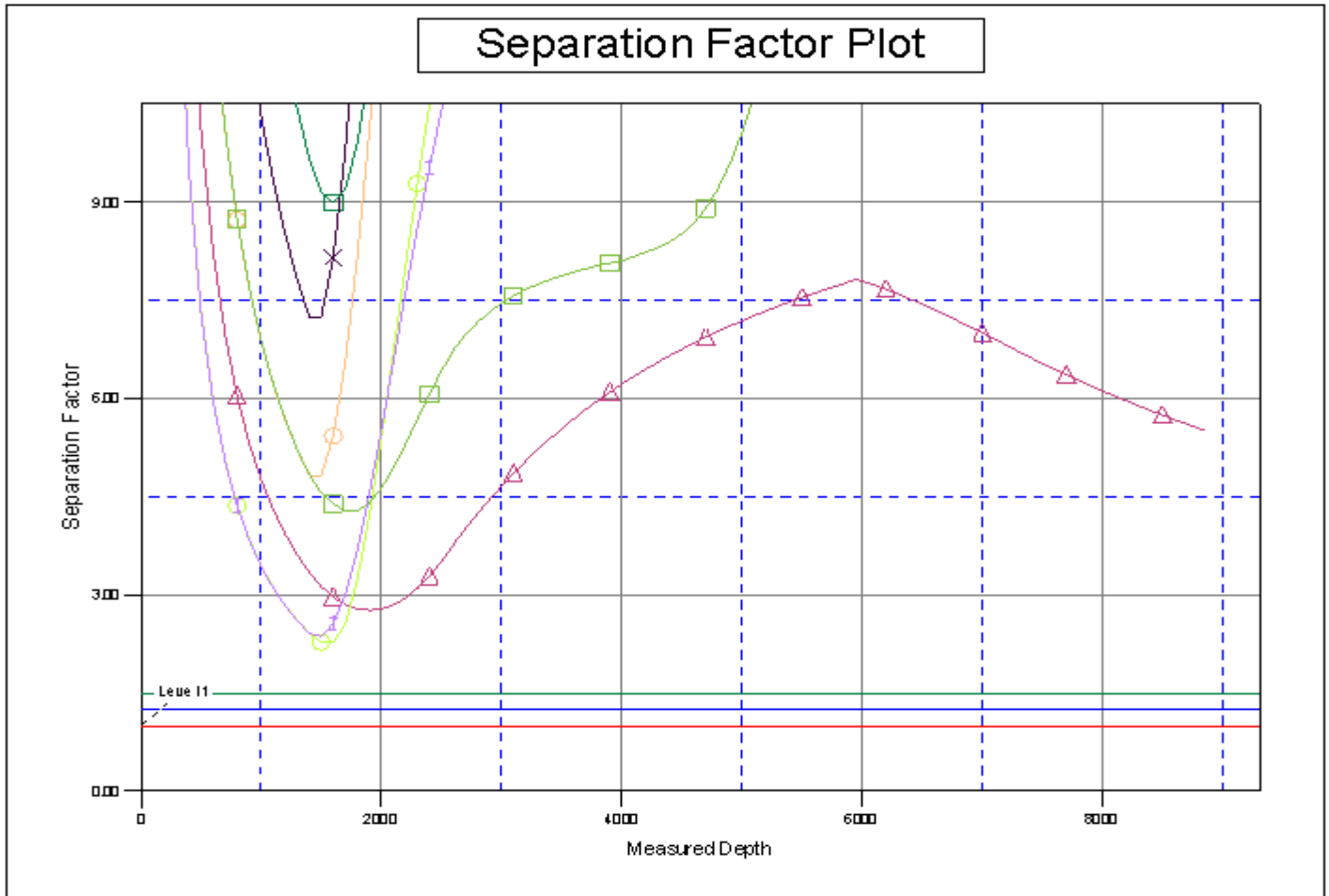
LEGEND

- 129 EXISTING WELL \0
- 9 EXISTING WELL \0
- P\_TALON VIEW 21-9, P\_TALON VIEW 219, PLAN #1 0901-09 RHS \0
- P\_TALON VIEW 22-9, P\_TALON VIEW 229, PLAN #1 0901-09 RHS \0
- P\_TALON VIEW 39, P\_TALON VIEW 39, PLAN #1 0901-09 RHS \0
- P\_TALON VIEW 5-9
- P\_TALON VIEW 6-9



<b>Company:</b>	US ROCKIES REGION PLANNING	<b>Local Co-ordinate Reference:</b>	Well P_TALON VIEW 11-9
<b>Project:</b>	KERR MCGEE OIL & GAS ONSHORE LP	<b>TVD Reference:</b>	WELL @ 5171.00ft (Original Well Elev)
<b>Reference Site:</b>	ADAMS_TALON VIEW 7 PAD	<b>MD Reference:</b>	WELL @ 5171.00ft (Original Well Elev)
<b>Site Error:</b>	0.00ft	<b>North Reference:</b>	True
<b>Reference Well:</b>	P_TALON VIEW 11-9	<b>Survey Calculation Method:</b>	Minimum Curvature
<b>Well Error:</b>	0.00ft	<b>Output errors are at</b>	2.00 sigma
<b>Reference Wellbore</b>	P_TALON VIEW 11-9	<b>Database:</b>	EDM 2003.21 Single User Db
<b>Reference Design:</b>	PLAN #1 09-01-09 RHS	<b>Offset TVD Reference:</b>	Offset Datum

Reference Depths are relative to WELL @ 5171.00ft (Original Well Elev) Coordinates are relative to: P\_TALON VIEW 11-9  
 Offset Depths are relative to Offset Datum Coordinate System is US State Plane 1983, Colorado Northern Zone  
 Central Meridian is 105° 30' 0.000 W ° Grid Convergence at Surface is: 0.39°



LEGEND

- |                      |  |                  |
|----------------------|--|------------------|
| 129 EXISTING WELL \0 | P_TALON VIEW 21-9, P_TALON VIEW 219, PLAN #1 09-01-09 RHS \0 | P_TALON VIEW 5-4 |
| 9 EXISTING WELL \0   | P_TALON VIEW 22-9, P_TALON VIEW 229, PLAN #1 09-01-09 RHS \0 | P_TALON VIEW 6-4 |
|                      | P_TALON VIEW 39, P_TALON VIEW 3-9, PLAN #1 09-01-09 RHS \0   |                  |