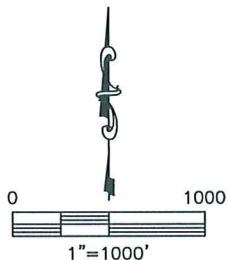
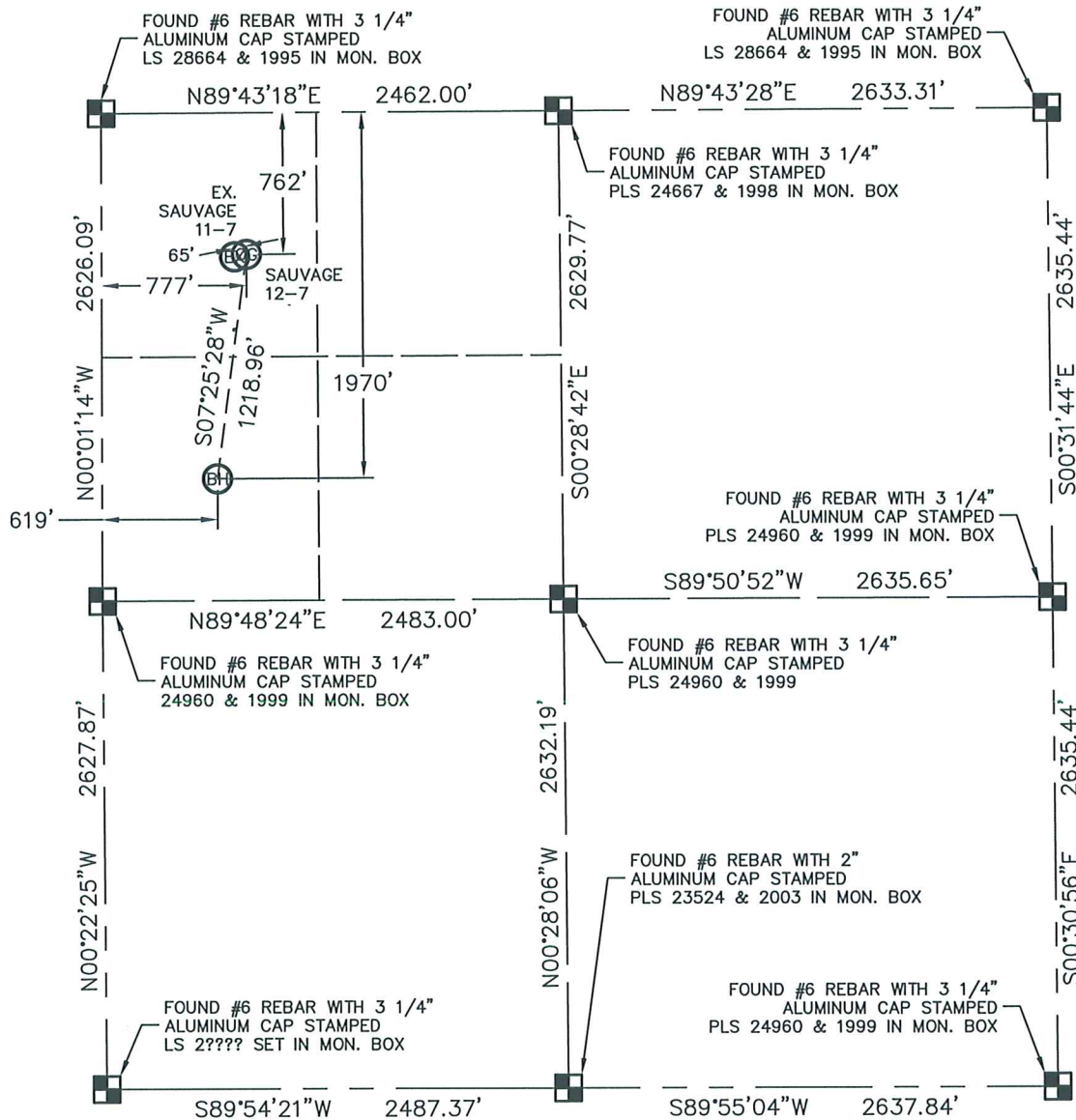


WELL LOCATION CERTIFICATE

THIS MAP DOES NOT REPRESENT A BOUNDARY SURVEY

SECTION: 7
TOWNSHIP: 1S
RANGE: 67W

NEAREST:

BUILDING- 292' SOUTHEAST
PUBLIC ROAD- 738' NORTH
ABOVE GROUND UTILITY- 725' SOUTHWEST
RAILROAD- 1011' NORTHWEST

NOTE:

- 1) Bearings shown are Grid Bearings of the Colorado State Plane Coordinate System, North Zone, North American Datum 1983/2007. The lineal dimensions as contained herein are based upon the "U.S. Survey Foot."
- 2) Ground elevations are based on an observed GPS elevation (NAVD 1988 DATUM).
- 3) IMPROVEMENTS: See VISIBLE IMPROVEMENTS exhibit for all visible improvements within 400' of well head.
- 4) SURFACE USE: PASTURE/EXISTING WELL PAD

In accordance with a request from Melissa Lasley with TEXAS AMERICAN RESOURCES CO. King Surveyors Inc. has determined the surface location of the Sauvage 12-7 to be 762' from the North line and 777' from the West line and the bottom hole to be 1970' from the North line and 619' from the West line as measured at right angles from the section line of Section 7, Township 1 South, Range 67 West of the Sixth Principal Meridian, County of Adams, State of Colorado.

I hereby state that this Well Location Certificate was prepared by me, or under my direct supervision, that the fieldwork was completed on 06/17/2009, for and on behalf of TEXAS AMERICAN RESOURCES CO. That this is not a Land Survey Plat or an Improvement Survey Plat, and that it is not to be relied upon for establishment of fence, building, or other future improvement lines.

SURFACE LOCATION

LATITUDE: 39.98426°N
LONGITUDE: 104.93747°W
PDOP: 2.0
ELEV: 5120'
1/4, 1/4: NW1/4NW1/4
NEAREST PROPERTY LINE: 150'±

BOTTOM HOLE

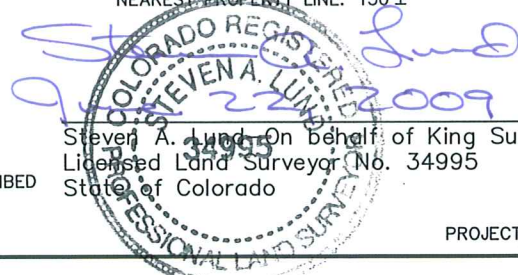
LATITUDE: 39.98095°N
LONGITUDE: 104.93805°W

NOTE

According to Colorado law, you must commence any legal action based upon any defect in this W.L.C. within three years after you discover such defect. In no event, may any action based upon any defect in this survey be commenced more than ten years after the date of the certificate shown hereon. (13-80-105 C.R.S.)

LEGEND

- = ALIQUOT MONUMENT AS DESCRIBED
○ = CALCULATED POSITION



PROJECT#: 2008300