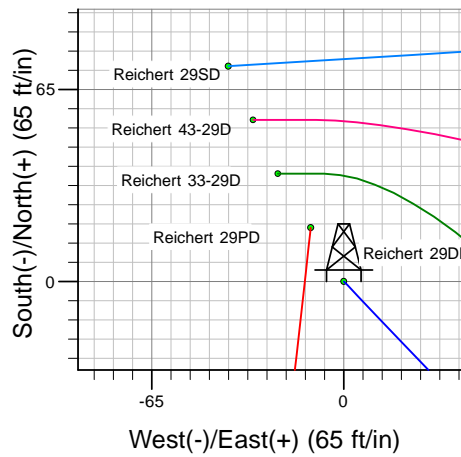
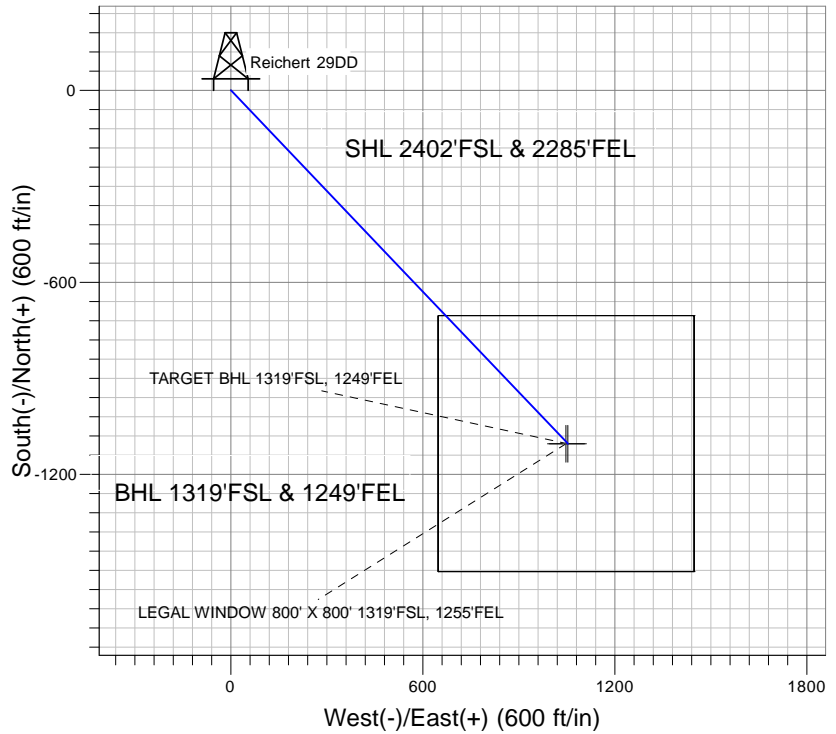
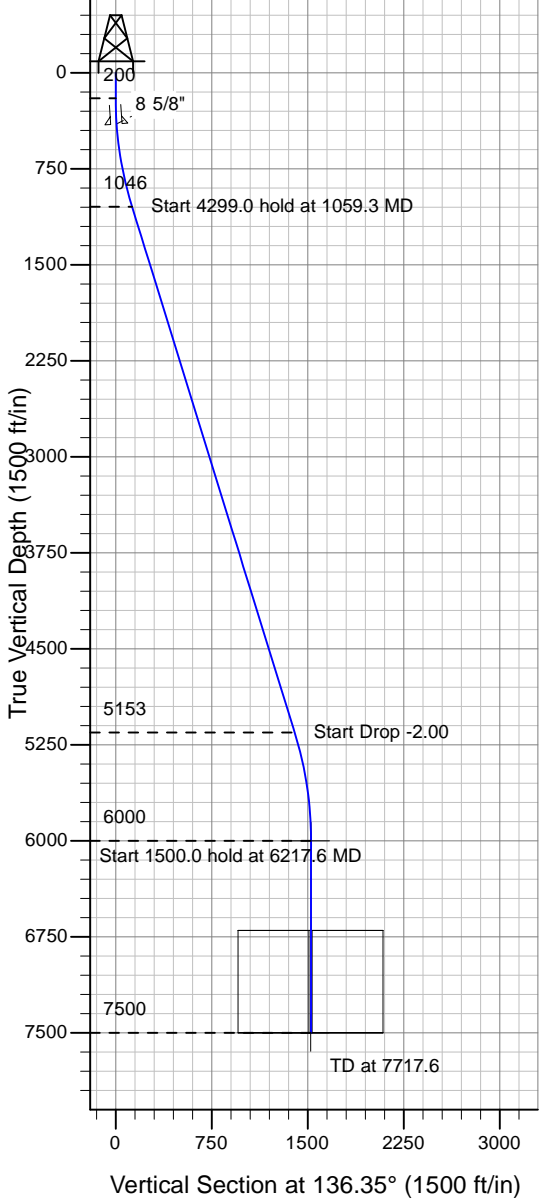


Well Name: Reichert 29DD

Surface Location: Reichert Pad Sec.29-T4N-R67W
 North American Datum 1983 , US State Plane 1983 , Colorado Northern Zone
 Ground Elevation: 4970.0
 +N/-S+E/-W Northing Easting Latitude Longitude Slot
 0.0 0.0 1346643.34 3163645.48 40° 17' 0.420 N 104° 54' 48.348 W
 Original Well Elev WELL @ 4983.0ft (Original Well Elev)

PETROLEUM DEVELOPMENT CORP Weld County CO



Reichert Pad Sec.29-T4N-R67W
 Reichert 29DD
 Plan #2 (8-26-09)
 16:19, August 26 2009



Azimuths to True North
 Magnetic North: 9.18°
 Magnetic Field
 Strength: 53291.5snT
 Dip Angle: 67.01°
 Date: 5/12/2009
 Model: IGRF200510

WELLBORE TARGET DETAILS (LAT/LONG)

Name	TVD	+N/-S	+E/-W	Latitude	Longitude	Shape
TARGET BHL 1319'FSL, 1249'FEL	6000.0	-1104.2	1053.4	40° 16' 49.508 N	104° 54' 34.756 W	Point
LEGAL WINDOW 800' X 800' 1319'FSL, 1255'FEL	7500.0	-1104.3	1047.4	40° 16' 49.507 N	104° 54' 34.833 W	Rectangle (Sides: L800.0 W800.0)

SECTION DETAILS

Sec	MD	Inc	Azi	TVD	+N/-S	+E/-W	DLeg	TFace	VSec	Target
1	0.0	0.00	0.00	0.0	0.0	0.0	0.00	0.00	0.0	
2	200.0	0.00	0.00	200.0	0.0	0.0	0.00	0.00	0.0	
3	1059.3	17.19	136.35	1046.5	-92.6	88.3	2.00	136.35	127.9	
4	5358.3	17.19	136.35	5153.5	-1011.7	965.1	0.00	0.00	1398.2	
5	6217.6	0.00	0.00	6000.0	-1104.2	1053.4	2.00	180.00	1526.1	TARGET BHL 1319'FSL, 1249'FEL
6	7717.6	0.00	0.00	7500.0	-1104.2	1053.4	0.00	0.00	1526.1	