

# Multi Well Plan

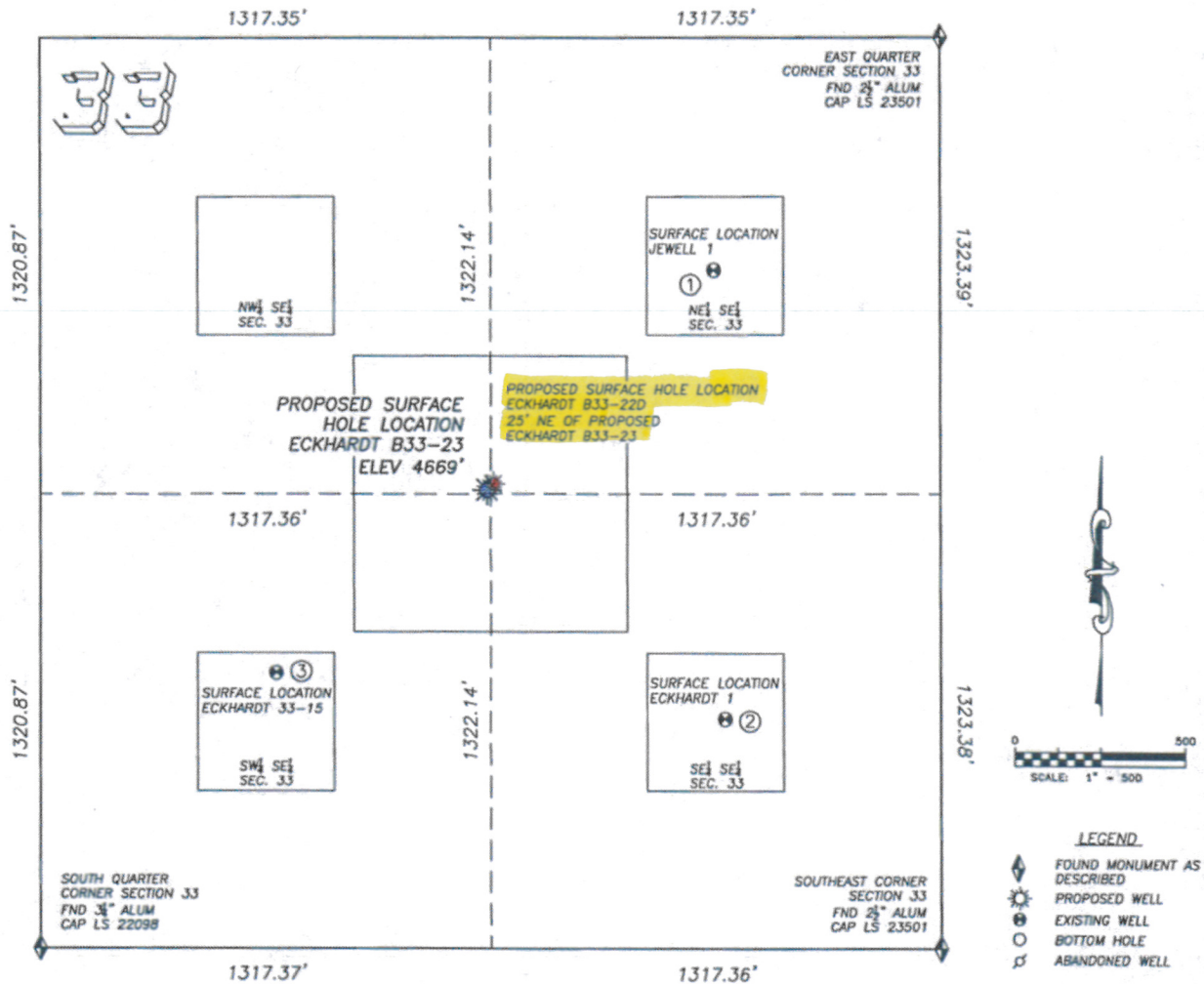
DALEY LAND SURVEYING, INC.

PARKER, CO. 80134

303 953 9841

## SITE SKETCH ECKHARDT B33-23

SECTION 33, TOWNSHIP 5 NORTH, RANGE 64 WEST OF THE 6TH PRINCIPLE MERIDIAN



- |   |  |   |
|---|--|---|
| <p>①<br/><b>JEWELL 1</b><br/>NE/SE SEC. 33<br/>1972' FSL, 663' FEL<br/>920' NE OF PROPOSED<br/>SURFACE HOLE LOCATION<br/>LAT. N40.35396°<br/>LONG. W104.54753°<br/>EL: 4661'<br/>PDOP 1.6</p> | <p>②<br/><b>ECKHARDT 1</b><br/>SE/SE SEC. 33<br/>670' FSL, 631' FEL<br/>964' SE OF PROPOSED<br/>SURFACE HOLE LOCATION<br/>LAT. N40.35039°<br/>LONG. W104.54740°<br/>EL: 4672'<br/>PDOP 2.0</p> | <p>③<br/><b>ECKHARDT 33-15</b><br/>SW/SE SEC. 33<br/>802' FSL, 1946' FEL<br/>814' SW OF PROPOSED<br/>SURFACE HOLE LOCATION<br/>LAT. N40.35075°<br/>LONG. W104.55211°<br/>EL: 4677'<br/>PDOP 2.3</p> |
|---|--|---|

- NOTES:
- THIS DOES NOT REPRESENT A BOUNDARY SURVEY
  - THE LATITUDES AND LONGITUDES SHOWN ARE REFERENCED TO NAD83
  - DATUM FOR ELEVATION IS NAVD88. ELEVATIONS ARE DERIVED FROM GPS-RTK OBSERVATIONS PROCESSED THROUGH OPUS, UTILIZING THE GEOID03 MODEL.

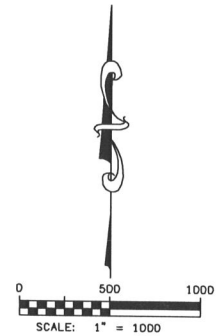
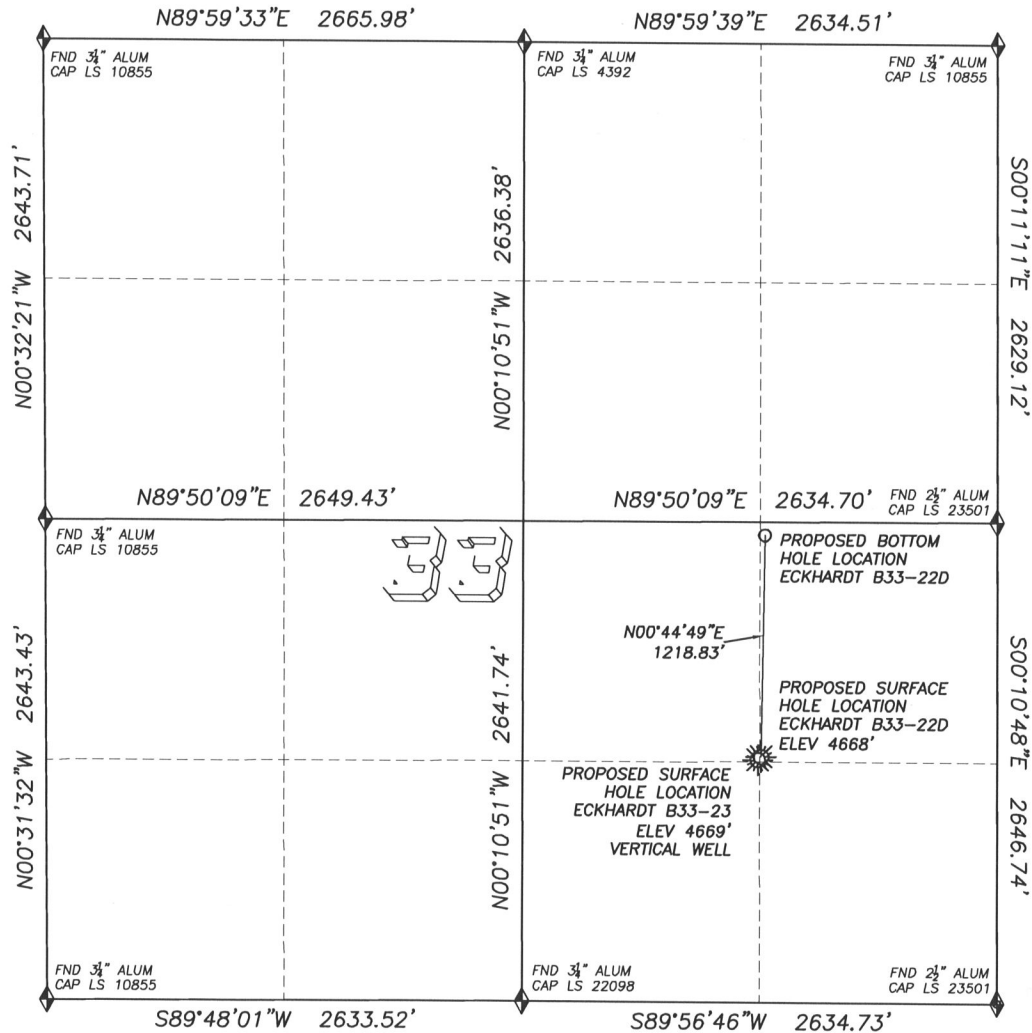
DALEY LAND SURVEYING, INC.

PARKER, CO. 80134

303 953 9841

## DIRECTIONAL LAYOUT ECKHARDT B33-22D

SECTION 33, TOWNSHIP 5 NORTH, RANGE 64 WEST OF THE 6TH PRINCIPLE MERIDIAN



### LEGEND

- ◆ FOUND MONUMENT AS DESCRIBED
- ☼ PROPOSED WELL
- ⊙ EXISTING WELL
- BOTTOM HOLE
- ⊘ ABANDONED WELL

### NAD 83 LATITUDE AND LONGITUDE

#### ECKHARDT B33-22D SURFACE HOLE:

LATITUDE: N40.35226°  
LONGITUDE: W104.54984°  
ELEVATION: 4668'  
PDOP 2.9  
1351' FSL, 1310' FEL

#### BOTTOM HOLE:

LATITUDE: N40.35560°  
LONGITUDE: W104.54978°  
2569' FSL, 1290' FEL

#### NEAREST EXISTING WELL:

ECKHARDT 33-15 SURFACE HOLE  
LATITUDE: N40.35075°  
LONGITUDE: W104.55211°  
ELEVATION: 4677'  
839' SOUTHWEST

### NAD 83 LATITUDE AND LONGITUDE

#### ECKHARDT B33-23 SURFACE HOLE:

LATITUDE: N40.35221°  
LONGITUDE: W104.54990°  
ELEVATION: 4669'  
PDOP 2.6  
1334' FSL, 1328' FEL

#### NEAREST EXISTING WELL:

ECKHARDT 33-15 SURFACE HOLE  
LATITUDE: N40.35075°  
LONGITUDE: W104.55211°  
ELEVATION: 4677'  
814' SOUTHWEST