

## Kubeczko, Dave

---

**From:** Kubeczko, Dave  
**Sent:** Monday, November 30, 2009 12:32 PM  
**To:** Kubeczko, Dave  
**Subject:** FW: K P Kauffman Company State 4-14, NWNW Sec 14 T4S R62W, Arapahoe County, Form 2A #1692882 Review  
**Attachments:** image001.gif; siting State 4-14 wells\_sec 14-4S-62W\_distance to road.pdf; siting State 3-14 wells\_sec 14-4S-62W\_distance to road.pdf

Scan No. 2032663      CORRESPONDENCE      Form 2A#1692822

---

**From:** Sean T. Glass [mailto:STGlass@kpk.com]  
**Sent:** Monday, November 23, 2009 3:42 PM  
**To:** Kubeczko, Dave  
**Subject:** FW: K P Kauffman Company State 4-14, NWNW Sec 14 T4S R62W, Arapahoe County, Form 2A #1692882 Review

---

**From:** Sherry Glass  
**Sent:** Mon 11/23/2009 2:59 PM  
**To:** Sean T. Glass  
**Subject:** FW: K P Kauffman Company State 4-14, NWNW Sec 14 T4S R62W, Arapahoe County, Form 2A #1692882 Review

[And this one, please. Thanks.](#)

---

**From:** Sherry Glass  
**Sent:** Monday, November 23, 2009 2:59 PM  
**To:** 'Kubeczko, Dave'  
**Subject:** RE: K P Kauffman Company State 4-14, NWNW Sec 14 T4S R62W, Arapahoe County, Form 2A #1692882 Review

[Nearest building distance is 3531', nearest utility is 3361' \(along road\). Also here are plats for #4-14, having to relay these and forgot to attach to email to forward. Thanks.](#)

---

**From:** Kubeczko, Dave [mailto:Dave.Kubeczko@state.co.us]  
**Sent:** Monday, November 23, 2009 2:27 PM  
**To:** Sherry Glass  
**Subject:** K P Kauffman Company State 4-14, NWNW Sec 14 T4S R62W, Arapahoe County, Form 2A #1692882 Review

I have been reviewing the K P Kauffman State 4-14 **Form 2A** (#1692882). COGCC requests the following clarifications regarding the data K P Kauffman has submitted on or attached to the Form 2A prior to passing the Oil and Gas Location Assessment.

1. **Cultural (Section 9):** The Form 2A indicates distances to nearest building of 5280 feet and the nearest above ground utility of 5280 feet. During COGCC's review of the 2005 aerial photograph, the distance to the nearest building was 2285 feet, but I couldn't verify the distance to the nearest above ground utility. Could you let me know where and how the nearest above ground utility was located. I can make the changes if you send an email with this request.

These are minor changes and I would like to pass this Form 2A. If you have any questions, please do not hesitate to call me at (970) 625-2497 x5 (office) or (970) 309-2514 (cell), or email. Thanks.

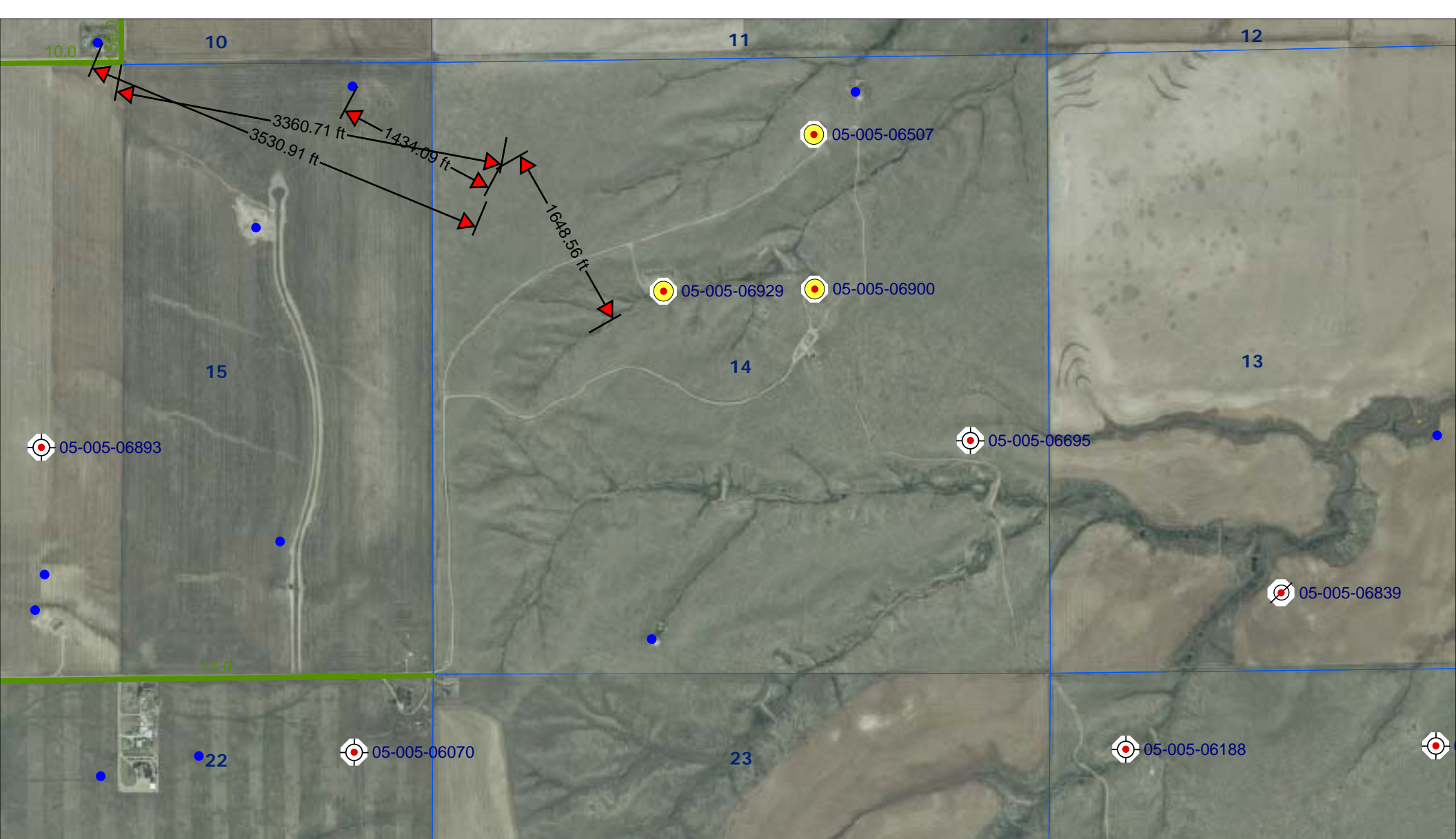
Dave

**David A. Kubeczko, PG**  
**Oil and Gas Location Assessment Specialist**

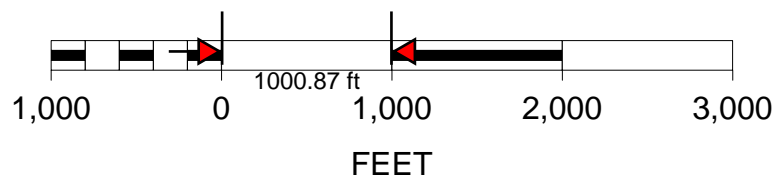
Colorado Oil & Gas Conservation Commission  
Northwest Area Office  
707 Wapiti Court, Suite 204  
Rifle, CO 81650  
Phone: (970) 625-2497x5  
FAX: (970) 625-5682  
Cell: (970) 309-2514  
[dave.kubeczko@state.co.us](mailto:dave.kubeczko@state.co.us)



 *Please consider the environment before printing this e-mail*



SCALE 1 : 27,064



State #4-14 well location

Township 4 South, Range 62 West

Arapahoe County, Colorado

