

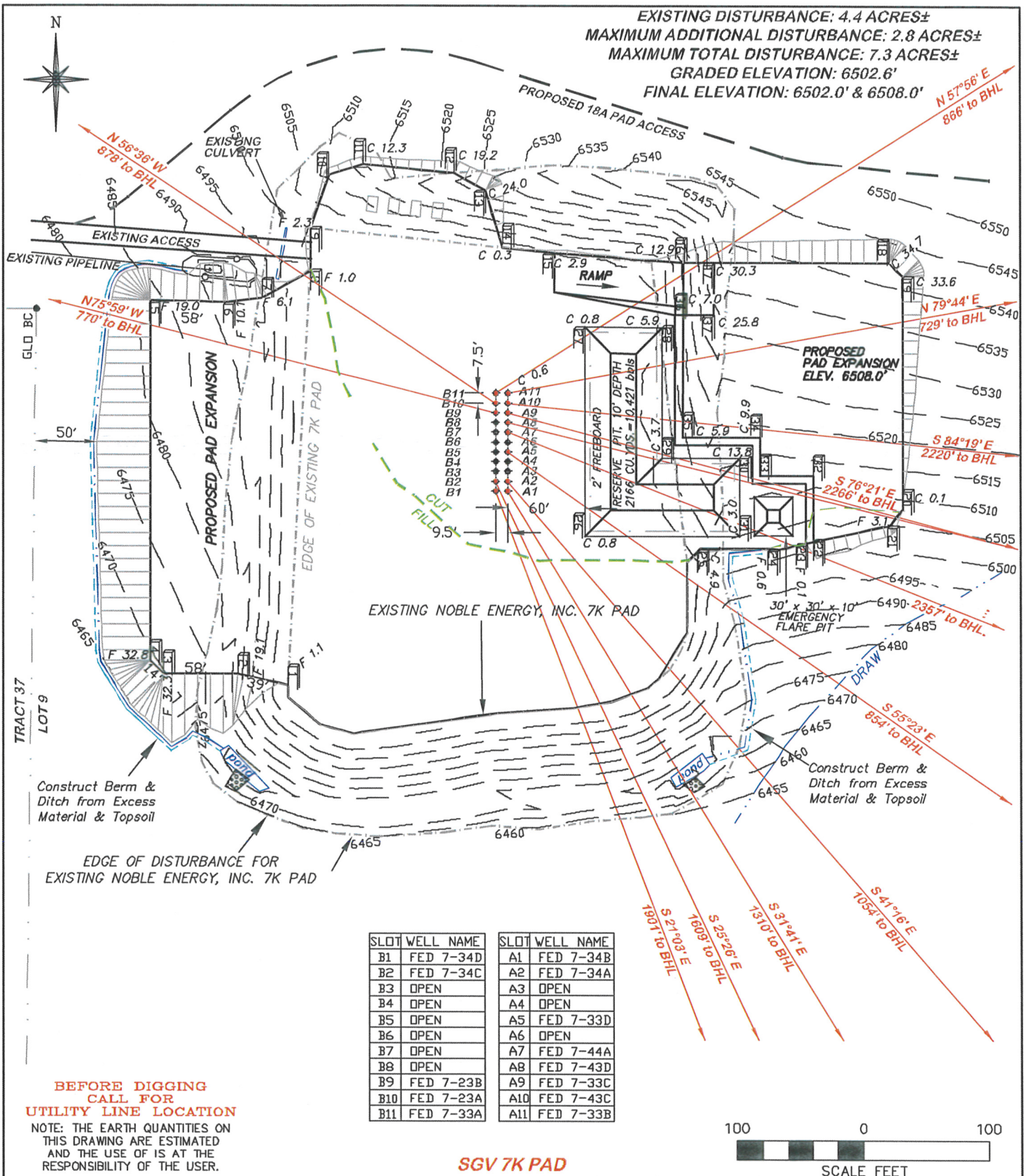
SLOT	WELL NAME	SLOT	WELL NAME
B1	FED 7-34D	A1	FED 7-34B
B2	FED 7-34C	A2	FED 7-34A
B3	OPEN	A3	OPEN
B4	OPEN	A4	OPEN
B5	OPEN	A5	FED 7-33D
B6	OPEN	A6	OPEN
B7	OPEN	A7	FED 7-44A
B8	OPEN	A8	FED 7-43D
B9	FED 7-23B	A9	FED 7-33C
B10	FED 7-23A	A10	FED 7-43C
B11	FED 7-33A	A11	FED 7-33B

**BEFORE DIGGING
CALL FOR
UTILITY LINE LOCATION**
 NOTE: THE EARTH QUANTITIES ON
 THIS DRAWING ARE ESTIMATED
 AND THE USE OF IS AT THE
 RESPONSIBILITY OF THE USER.

DRG RIFFIN & ASSOCIATES, INC.
 1414 ELK ST., ROCK SPRINGS, WY 82901
 (307) 362-5028

DRAWN: 1/28/09 - SC	SCALE: 1" = 100'
REVISED: 11/06/09 - WWG	DRG JOB No. 14045
REVISE TITLE BLOCK	EXHIBIT 2

CONSTRUCTION LAYOUT DRAWING 1 OF 5				
NOBLE ENERGY, INC.				
FEDERAL 7-23A, 7-23B, 7-33A, 7-33B, 7-33C, 7-33D, 7-34A, 7-34B, 7-34C, 7-34D, 7-43C, 7-43D & 7-44A				
SECTION 7, T8S, R95W, 6th P.M., GARFIELD COUNTY, COLORADO				
PAD EXPANSION VOLUMES				
ITEM	CUT	FILL	TOPSOIL	EXCESS
PAD	29604 CY	27980 CY	2311 CY	-687 CY
PIT	3703 CY			3703 CY
TOTALS	33307 CY	27980 CY	2311 CY	3016 CY



CONSTRUCTION LAYOUT DRAWING 2 OF 5

EXISTING TOPOGRAPHY
 NOBLE ENERGY, INC.
 FEDERAL 7-23A, 7-23B, 7-33A, 7-33B, 7-33C, 7-33D,
 7-34A, 7-34B, 7-34C, 7-34D, 7-43C, 7-43D & 7-44A

SECTION 7, T8S, R95W, 6th P.M.,
 GARFIELD COUNTY, COLORADO



RIFFIN & ASSOCIATES, INC.
 1414 ELK ST., ROCK SPRINGS, WY 82901

DRAWN: 1/28/09 - SC

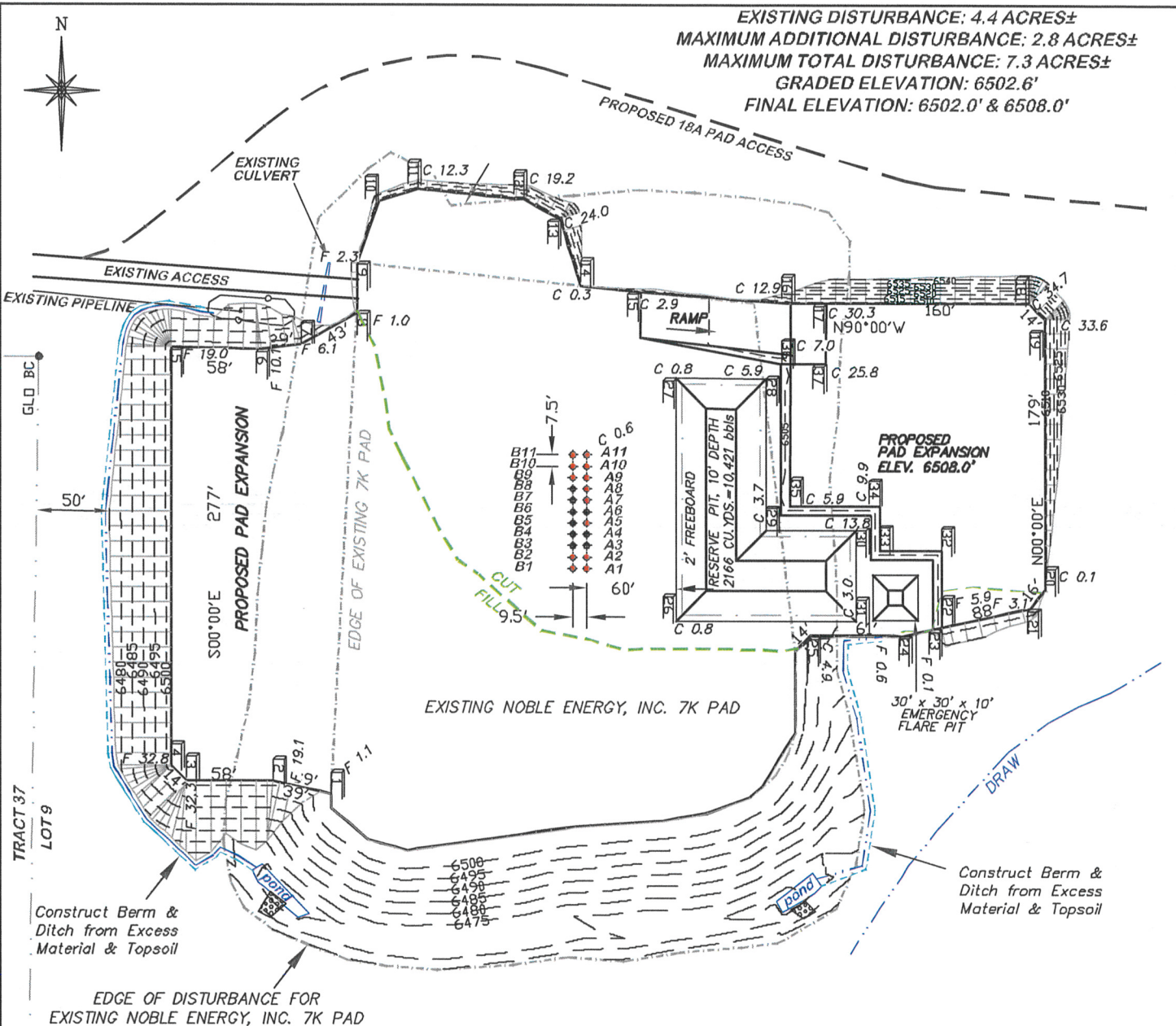
SCALE: 1" = 100'

REVISED: 11/06/09 - WWG

DRG JOB No. 14045

REVISE TITLE BLOCK

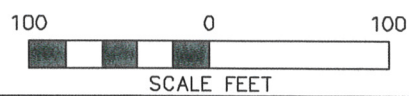
EXHIBIT 2A



SLOT	WELL NAME	SLOT	WELL NAME
B1	FED 7-34D	A1	FED 7-34B
B2	FED 7-34C	A2	FED 7-34A
B3	OPEN	A3	OPEN
B4	OPEN	A4	OPEN
B5	OPEN	A5	FED 7-33D
B6	OPEN	A6	OPEN
B7	OPEN	A7	FED 7-44A
B8	OPEN	A8	FED 7-43D
B9	FED 7-23B	A9	FED 7-33C
B10	FED 7-23A	A10	FED 7-43C
B11	FED 7-33A	A11	FED 7-33B

**BEFORE DIGGING
 CALL FOR
 UTILITY LINE LOCATION**
 NOTE: THE EARTH QUANTITIES ON
 THIS DRAWING ARE ESTIMATED
 AND THE USE OF IS AT THE
 RESPONSIBILITY OF THE USER.

SGV 7K PAD



CONSTRUCTION LAYOUT DRAWING 3 OF 5

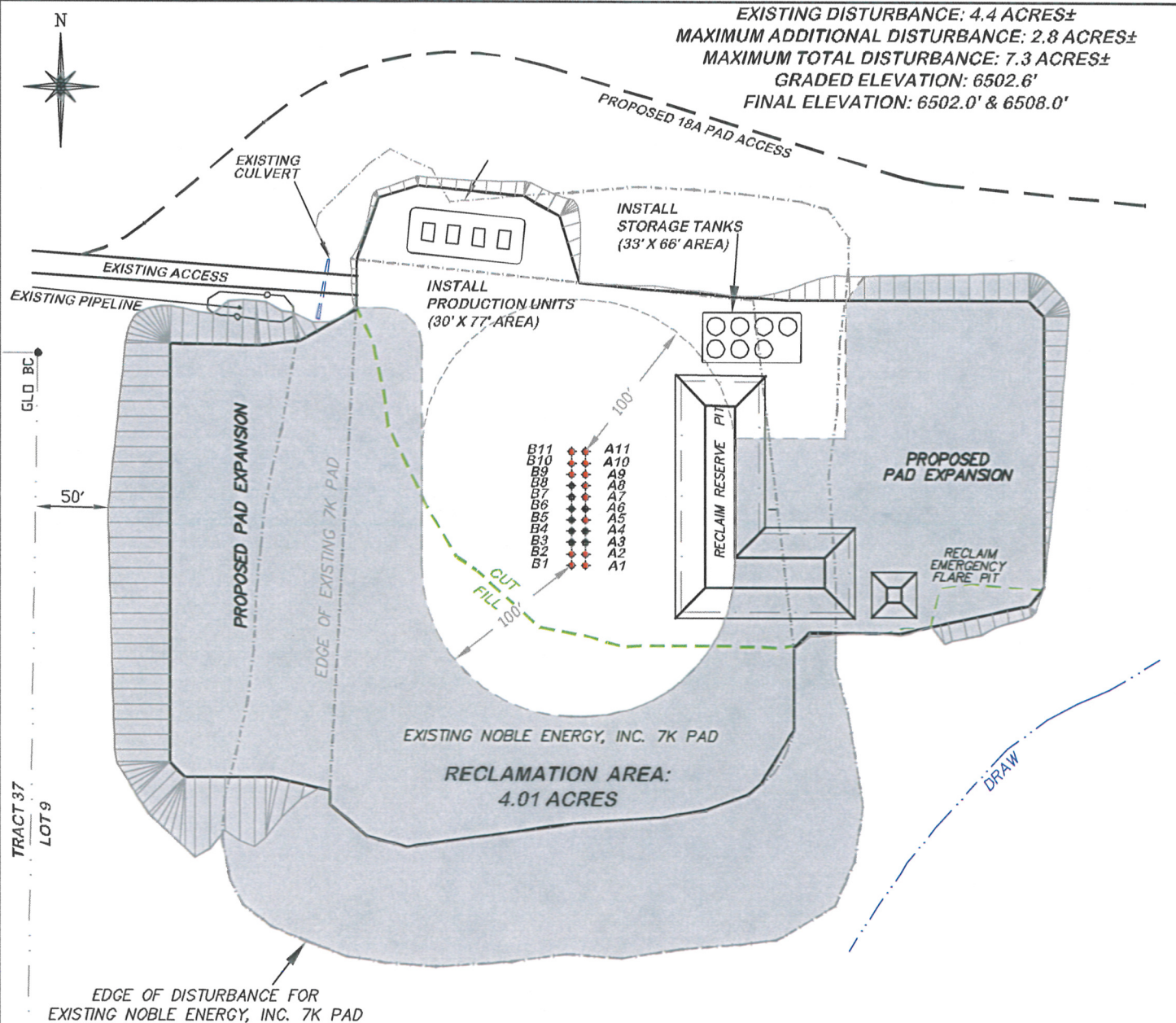
**PROPOSED GRADING
 NOBLE ENERGY, INC.
 FEDERAL 7-23A, 7-23B, 7-33A, 7-33B, 7-33C, 7-33D,
 7-34A, 7-34B, 7-34C, 7-34D, 7-43C, 7-43D & 7-44A**

**SECTION 7, T8S, R95W, 6th P.M.,
 GARFIELD COUNTY, COLORADO**



DRG RIFFIN & ASSOCIATES, INC.
 (307) 362-5028 1414 ELK ST., ROCK SPRINGS, WY 82901

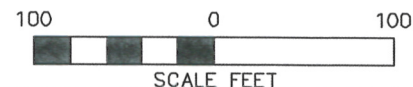
DRAWN: 1/28/09 - SC	SCALE: 1" = 100'
REVISED: 11/06/09 - WWG	DRG JOB No. 14045
REVISE TITLE BLOCK	EXHIBIT 2B



**BEFORE DIGGING
CALL FOR
UTILITY LINE LOCATION**
NOTE: THE EARTH QUANTITIES ON
THIS DRAWING ARE ESTIMATED
AND THE USE OF IS AT THE
RESPONSIBILITY OF THE USER.

SLOT	WELL NAME	SLOT	WELL NAME
B1	FED 7-34D	A1	FED 7-34B
B2	FED 7-34C	A2	FED 7-34A
B3	OPEN	A3	OPEN
B4	OPEN	A4	OPEN
B5	OPEN	A5	FED 7-33D
B6	OPEN	A6	OPEN
B7	OPEN	A7	FED 7-44A
B8	OPEN	A8	FED 7-43D
B9	FED 7-23B	A9	FED 7-33C
B10	FED 7-23A	A10	FED 7-43C
B11	FED 7-33A	A11	FED 7-33B

SGV 7K PAD



CONSTRUCTION LAYOUT DRAWING 4 OF 5

**PROPOSED RECLAMATION
NOBLE ENERGY, INC.
FEDERAL 7-23A, 7-23B, 7-33A, 7-33B, 7-33C, 7-33D,
7-34A, 7-34B, 7-34C, 7-34D, 7-43C, 7-43D & 7-44A**

**SECTION 7, T8S, R95W, 6th P.M.,
GARFIELD COUNTY, COLORADO**



RIFFIN & ASSOCIATES, INC.
1414 ELK ST., ROCK SPRINGS, WY 82901

DRAWN: 1/28/09 - SC

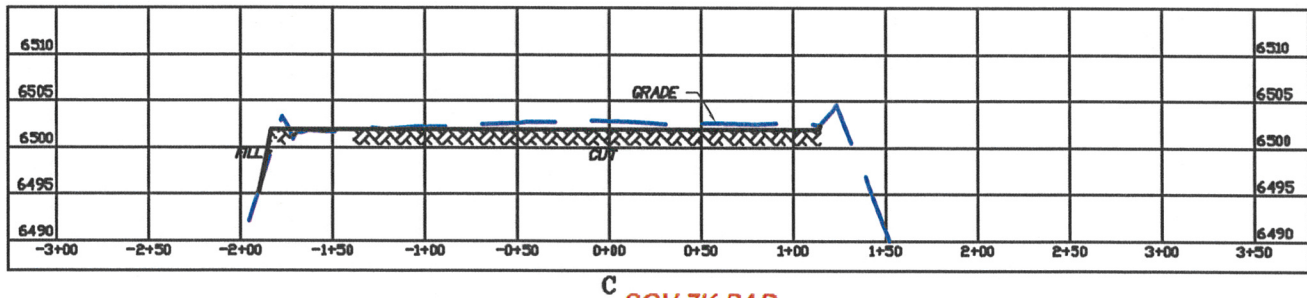
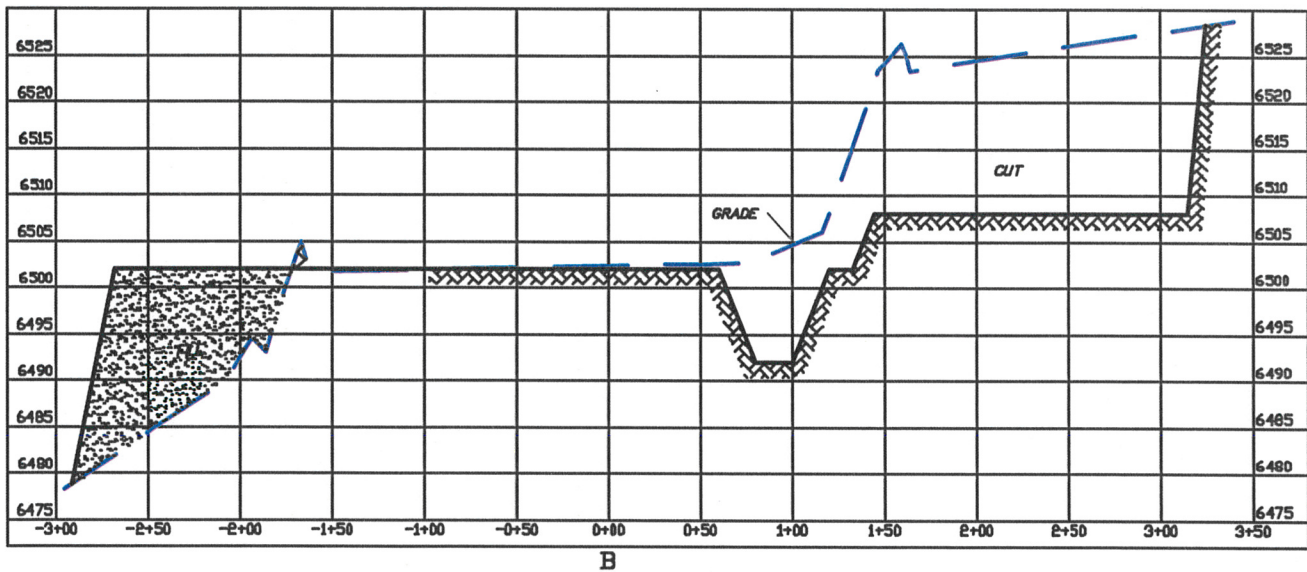
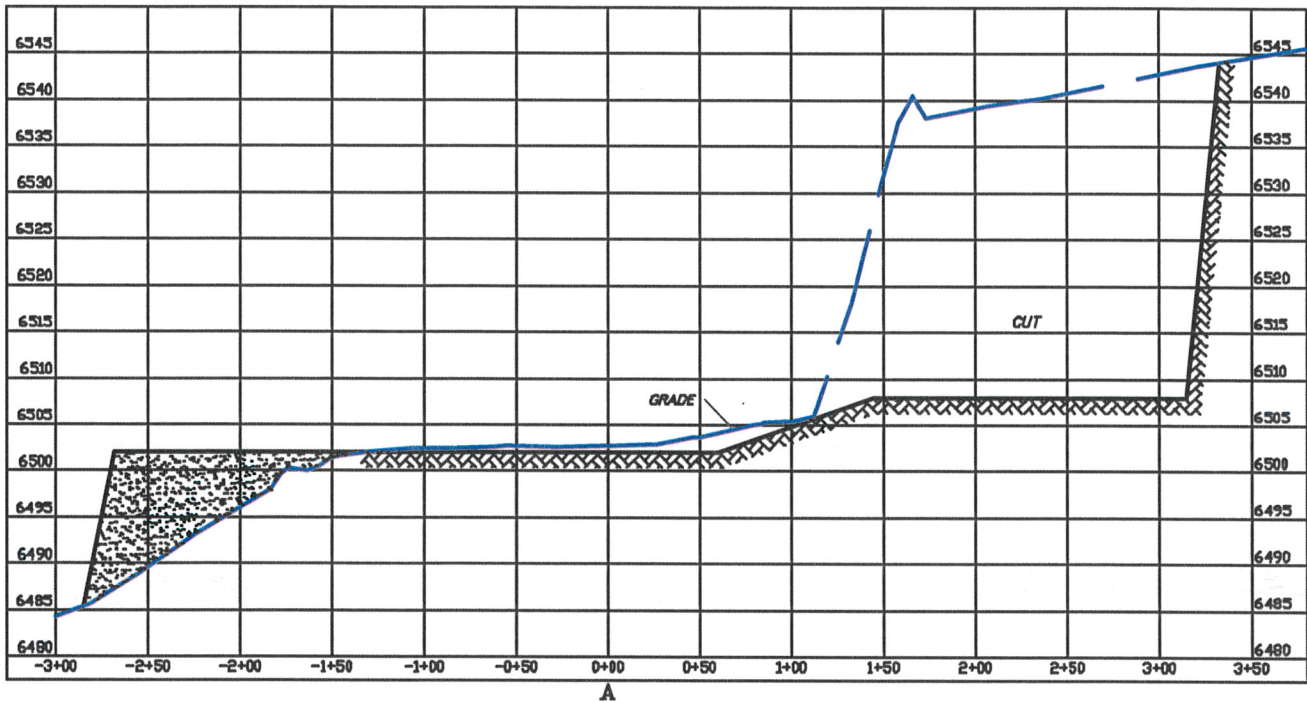
SCALE: 1" = 100'

REVISED: 11/06/09 - WWG

DRG JOB No. 14045

REVISE TITLE BLOCK

EXHIBIT 2C



SGV 7K PAD



RIFFIN & ASSOCIATES, INC.
1414 ELK ST., ROCK SPRINGS, WY 82901

(307) 362-5028

DRAWN: 1/28/09 - SC

HORZ. 1" = 100' VERT. 1" = 20'

REVISED: 11/06/09 - WWG

DRG JOB No.14045

REVISE TITLE BLOCK

EXHIBIT 3

CONSTRUCTION LAYOUT DRAWING 5 OF 5

NOBLE ENERGY, INC.

**FEDERAL 7-23A, 7-23B, 7-33A, 7-33B, 7-33C, 7-33D,
7-34A, 7-34B, 7-34C, 7-34D, 7-43C, 7-43D & 7-44A**

**SECTION 7, T8S, R95W, 6th P.M.,
GARFIELD COUNTY, COLORADO**

**EXISTING GRADED ELEVATION: 6502.6'
FINISHED ELEVATION: 6502.0' & 6502.8'**