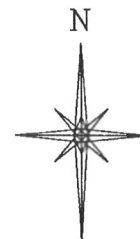
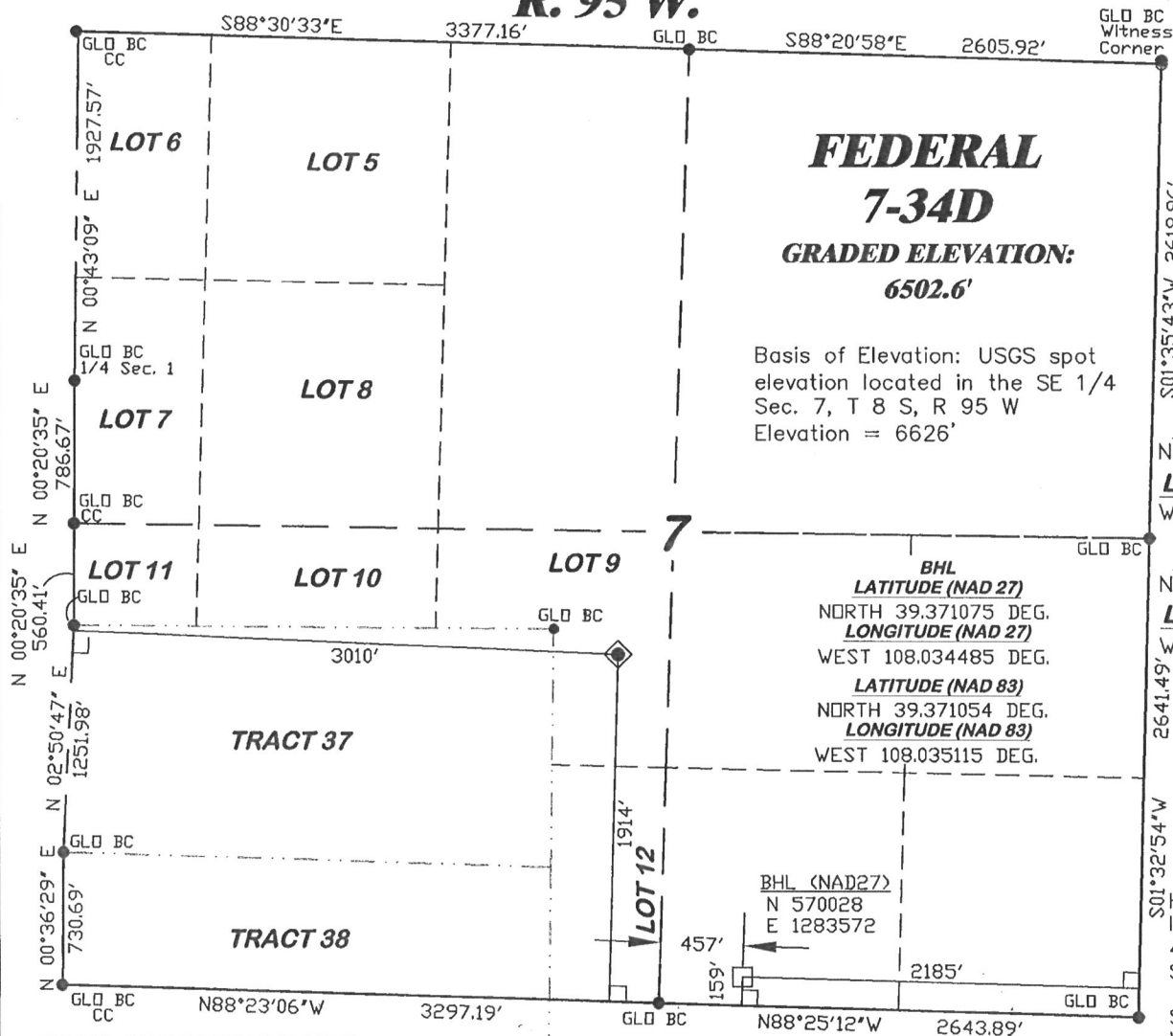


R. 95 W.



SCALE 1" = 1000'

T. 8 S.

**LATITUDE (NAD 27)**  
NORTH 39.375892 DEG  
**LONGITUDE (NAD 27)**  
WEST 108.037075 DEG.

**LATITUDE (NAD 83)**  
NORTH 39.375871 DEG.  
**LONGITUDE (NAD 83)**  
WEST 108.037704 DEG.

**NORTHING**  
571802.21  
**EASTING**  
1282889.26

#### NOTES

HIGH PLATEAU DESERT  
IMPROVEMENTS WITHIN  
400' OF EXISTING PAD  
SEE EXHIBIT 1B.

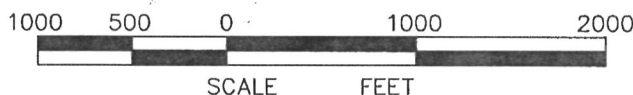
SURFACE USE IS NATIVE  
WOODS.

GPS OPERATOR John  
Richardson OBSERVED A  
PDOP OF 2.3.

ALL GPS OBSERVATIONS  
ARE IN COMPLIANCE  
WITH COGCC RULE NO.  
215.

#### BASIS OF BEARING/DATUM

SPCS CO CENTRAL NAD 27, BASED ON  
NGS TRIG. STATION 'FABER'  
THE BASIS OF BEARINGS FOR THIS  
SURVEY IS REFERENCED TO THE SOUTH  
LINE OF THE SE 1/4 OF SECTION 7, BEING  
MONUMENTED AS SHOWN AND BEARING  
N 88° 25' 12" W.



#### SURVEYOR'S STATEMENT

I, Ronald C. Rennke, an employee and agent on behalf of D.R. GRIFFIN & ASSOCIATES, INC. state the plat hereon is a correct representation of a survey made under my supervision on July 24, 2009 of the shown Federal 7-34D and is staked on the ground as shown on this plat.

#### LEGEND

- ◆ WELL LOCATION
- BOTTOM HOLE LOC. (APPROX)
- FOUND MONUMENT
- L DENOTES 90° TIE

11/08/09  
Ronald C. Rennke  
COLORADO PLS No. 37065

SGV 7K PAD

**DRG** RIFFIN & ASSOCIATES, INC.  
(307) 362-0028 1414 ELK ST., ROCK SPRINGS, WY 82901

DRAWN: 11/06/06 - SC

SCALE: 1" = 1000'

REVISED: 11/6/09 - WWG

DRG JOB No. 14045

REVISED TITLE BLOCK

EXHIBIT 1

**LOCATION DRAWING 12 OF 14**  
**PLAT OF DRILLING LOCATION FOR**  
**NOBLE ENERGY, INC.**

**3010' F/WL & 1914' F/SL, SECTION 7,**  
**T. 8 S., R. 95 W., 6th P.M.**  
**GARFIELD COUNTY, COLORADO**