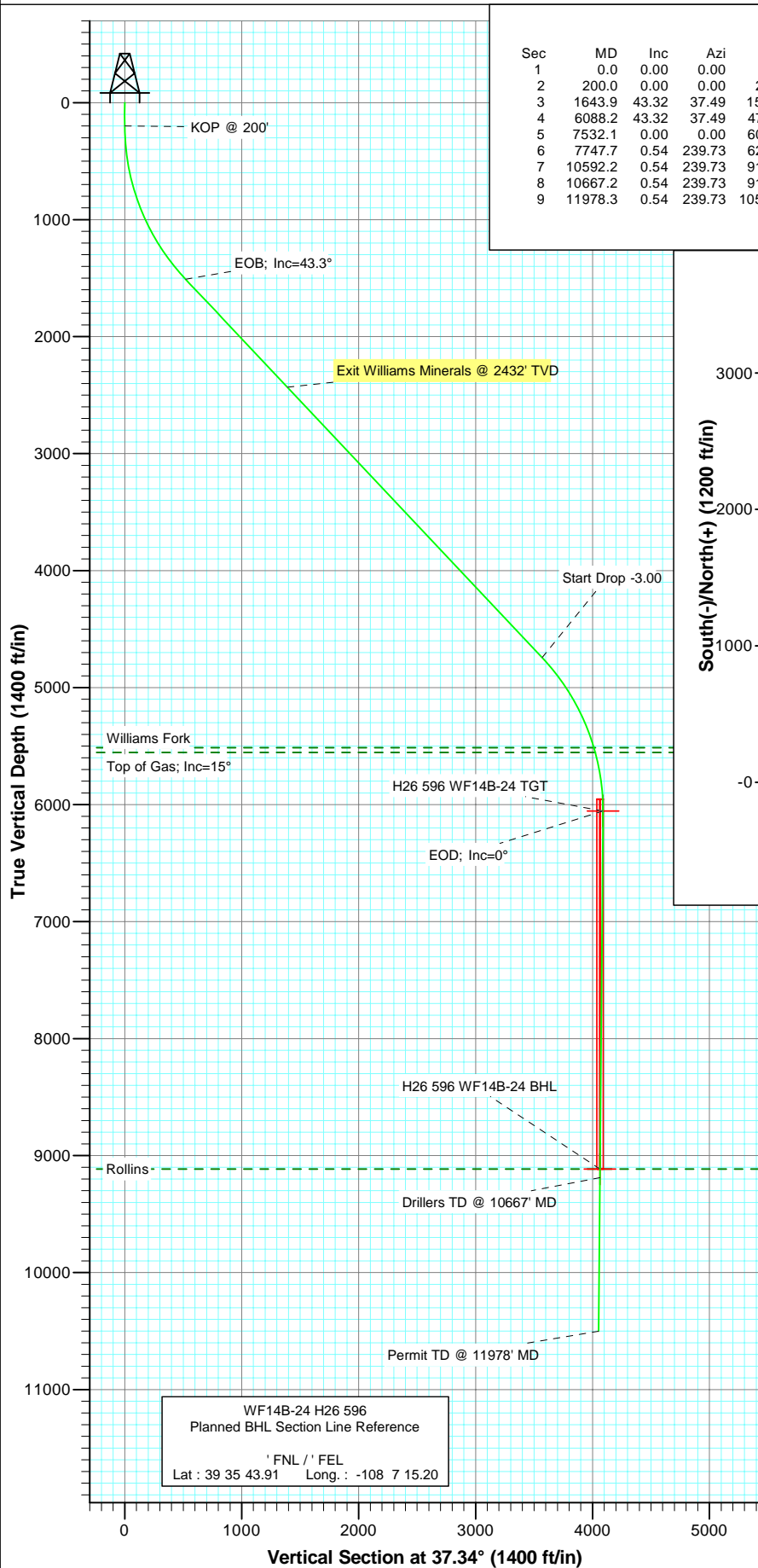
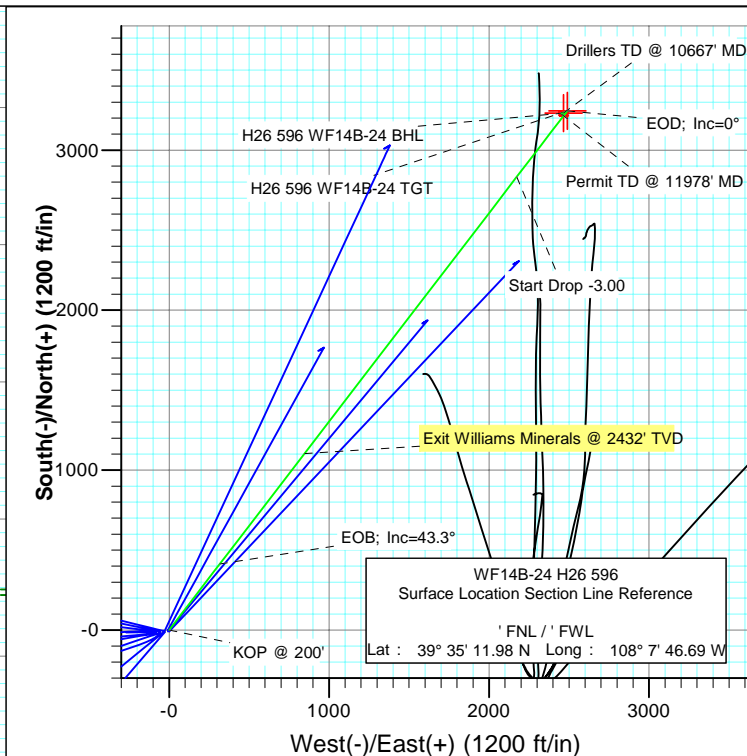




Project: North Piceance
Site: H26 596
Well: WF14B-24 H26 596
Wellbore: DD
Plan: Plan #2



SECTION DETAILS										
Sec	MD	Inc	Azi	TVD	+N/-S	+E/-W	DLeg	TFace	VSec	Target
1	0.0	0.00	0.00	0.0	0.0	0.0	0.00	0.00	0.0	
2	200.0	0.00	0.00	200.0	0.0	0.0	0.00	0.00	0.0	
3	1643.9	43.32	37.49	1510.2	412.8	316.7	3.00	37.49	520.3	
4	6088.2	43.32	37.49	4743.8	2832.0	2172.3	0.00	0.00	3569.2	
5	7532.1	0.00	0.00	6054.0	3244.8	2489.0	3.00	180.00	4089.5	H26 596 WF14B-24 TGT
6	7747.7	0.54	239.73	6269.6	3244.3	2488.1	0.25	239.73	4088.5	
7	10592.2	0.54	239.73	9114.0	3230.8	2465.0	0.00	0.00	4063.8	H26 596 WF14B-24 BHL
8	10667.2	0.54	239.73	9189.0	3230.5	2464.4	0.00	0.00	4063.1	
9	11978.3	0.54	239.73	10500.0	3224.3	2453.7	0.00	0.00	4051.7	



FORMATION TOP DETAILS		
TVDPath	MDPath	Formation
5514.0	6984.6	Williams Fork
5554.0	7026.2	Top of Gas; Inc=15°
9114.0	10592.2	Rollins



Azimuths to True North
Magnetic North: 10.73°

Magnetic Field
Strength: 52564.1snT
Dip Angle: 65.87°
Date: 11/20/2008
Model: IGRF200510

DESIGN DETAILS: Plan #2

Job# 85xxx; LR
WELL @ 6114.0ft (Original Well Elev)

Target	Azimuth	Origin Type	N/S	E/W	From TVD
H26 596 WF14B-24 BHL	37.34	Slot	0.0	0.0	0.0

Planning Report

Database:	EDM 2003.21 US Multi User DB	Local Co-ordinate Reference:	Well WF14B-24 H26 596
Company:	EnCana Oil & Gas (USA) Inc	TVD Reference:	WELL @ 6114.0ft (Original Well Elev)
Project:	North Piceance	MD Reference:	WELL @ 6114.0ft (Original Well Elev)
Site:	H26 596	North Reference:	True
Well:	WF14B-24 H26 596	Survey Calculation Method:	Minimum Curvature
Wellbore:	DD		
Design:	Plan #2		

Project	North Piceance		
Map System:	US State Plane 1983	System Datum:	Mean Sea Level
Geo Datum:	North American Datum 1983		
Map Zone:	Colorado Central Zone		

Site	H26 596				
Site Position:		Northing:	1,649,294.53 ft	Latitude:	39° 35' 11.93 N
From:	Map	Easting:	2,258,943.98 ft	Longitude:	108° 7' 47.14 W
Position Uncertainty:	0.0 ft	Slot Radius:	in	Grid Convergence:	-1.66 °

Well	WF14B-24 H26 596					
Well Position	+N/-S	0.0 ft	Northing:	1,649,298.56 ft	Latitude:	39° 35' 11.98 N
	+E/-W	0.0 ft	Easting:	2,258,979.34 ft	Longitude:	108° 7' 46.69 W
Position Uncertainty		0.0 ft	Wellhead Elevation:	ft	Ground Level:	6,092.0 ft

Wellbore	DD				
Magnetics	Model Name	Sample Date	Declination (°)	Dip Angle (°)	Field Strength (nT)
	IGRF200510	11/20/2008	10.74	65.87	52,564

Design	Plan #2			
Audit Notes:				
Version:	Phase:	PLAN	Tie On Depth:	0.0
Vertical Section:	Depth From (TVD) (ft)	+N/-S (ft)	+E/-W (ft)	Direction (°)
	0.0	0.0	0.0	37.34

Plan Sections										
Measured Depth (ft)	Inclination (°)	Azimuth (°)	Vertical Depth (ft)	+N/-S (ft)	+E/-W (ft)	Dogleg Rate (°/100ft)	Build Rate (°/100ft)	Turn Rate (°/100ft)	TFO (°)	Target
0.0	0.00	0.00	0.0	0.0	0.0	0.00	0.00	0.00	0.00	
200.0	0.00	0.00	200.0	0.0	0.0	0.00	0.00	0.00	0.00	
1,643.9	43.32	37.49	1,510.2	412.8	316.7	3.00	3.00	0.00	37.49	
6,088.2	43.32	37.49	4,743.8	2,832.0	2,172.3	0.00	0.00	0.00	0.00	
7,532.1	0.00	0.00	6,054.0	3,244.8	2,489.0	3.00	-3.00	0.00	180.00	H26 596 WF14B-24 T
7,747.7	0.54	239.73	6,269.6	3,244.3	2,488.1	0.25	0.25	-55.77	239.73	
10,592.2	0.54	239.73	9,114.0	3,230.8	2,465.0	0.00	0.00	0.00	0.00	H26 596 WF14B-24 E
10,667.2	0.54	239.73	9,189.0	3,230.5	2,464.4	0.00	0.00	0.00	0.00	
11,978.3	0.54	239.73	10,500.0	3,224.3	2,453.7	0.00	0.00	0.00	0.00	

Planning Report

Database:	EDM 2003.21 US Multi User DB	Local Co-ordinate Reference:	Well WF14B-24 H26 596
Company:	EnCana Oil & Gas (USA) Inc	TVD Reference:	WELL @ 6114.0ft (Original Well Elev)
Project:	North Piceance	MD Reference:	WELL @ 6114.0ft (Original Well Elev)
Site:	H26 596	North Reference:	True
Well:	WF14B-24 H26 596	Survey Calculation Method:	Minimum Curvature
Wellbore:	DD		
Design:	Plan #2		

Planned Survey

Measured Depth (ft)	Inclination (°)	Azimuth (°)	Vertical Depth (ft)	+N/-S (ft)	+E/-W (ft)	Vertical Section (ft)	Dogleg Rate (°/100ft)	Build Rate (°/100ft)	Comments / Formations
0.0	0.00	0.00	0.0	0.0	0.0	0.0	0.00	0.00	
30.0	0.00	0.00	30.0	0.0	0.0	0.0	0.00	0.00	
60.0	0.00	0.00	60.0	0.0	0.0	0.0	0.00	0.00	
90.0	0.00	0.00	90.0	0.0	0.0	0.0	0.00	0.00	
120.0	0.00	0.00	120.0	0.0	0.0	0.0	0.00	0.00	
150.0	0.00	0.00	150.0	0.0	0.0	0.0	0.00	0.00	
180.0	0.00	0.00	180.0	0.0	0.0	0.0	0.00	0.00	
200.0	0.00	0.00	200.0	0.0	0.0	0.0	0.00	0.00	KOP @ 200'
210.0	0.30	37.49	210.0	0.0	0.0	0.0	3.00	3.00	
240.0	1.20	37.49	240.0	0.3	0.3	0.4	3.00	3.00	
270.0	2.10	37.49	270.0	1.0	0.8	1.3	3.00	3.00	
300.0	3.00	37.49	300.0	2.1	1.6	2.6	3.00	3.00	
330.0	3.90	37.49	329.9	3.5	2.7	4.4	3.00	3.00	
360.0	4.80	37.49	359.8	5.3	4.1	6.7	3.00	3.00	
390.0	5.70	37.49	389.7	7.5	5.7	9.4	3.00	3.00	
420.0	6.60	37.49	419.5	10.0	7.7	12.7	3.00	3.00	
450.0	7.50	37.49	449.3	13.0	9.9	16.3	3.00	3.00	
480.0	8.40	37.49	479.0	16.3	12.5	20.5	3.00	3.00	
510.0	9.30	37.49	508.6	19.9	15.3	25.1	3.00	3.00	
540.0	10.20	37.49	538.2	23.9	18.4	30.2	3.00	3.00	
570.0	11.10	37.49	567.7	28.3	21.7	35.7	3.00	3.00	
600.0	12.00	37.49	597.1	33.1	25.4	41.7	3.00	3.00	
630.0	12.90	37.49	626.4	38.2	29.3	48.2	3.00	3.00	
660.0	13.80	37.49	655.6	43.7	33.6	55.1	3.00	3.00	
690.0	14.70	37.49	684.6	49.6	38.0	62.5	3.00	3.00	
720.0	15.60	37.49	713.6	55.8	42.8	70.4	3.00	3.00	
750.0	16.50	37.49	742.4	62.4	47.9	78.6	3.00	3.00	
780.0	17.40	37.49	771.1	69.3	53.2	87.4	3.00	3.00	
810.0	18.30	37.49	799.7	76.6	58.8	96.6	3.00	3.00	
840.0	19.20	37.49	828.1	84.3	64.7	106.2	3.00	3.00	
870.0	20.10	37.49	856.3	92.3	70.8	116.3	3.00	3.00	
900.0	21.00	37.49	884.4	100.7	77.2	126.9	3.00	3.00	
930.0	21.90	37.49	912.4	109.4	83.9	137.8	3.00	3.00	
960.0	22.80	37.49	940.1	118.4	90.8	149.2	3.00	3.00	
990.0	23.70	37.49	967.7	127.8	98.0	161.1	3.00	3.00	
1,020.0	24.60	37.49	995.0	137.5	105.5	173.3	3.00	3.00	
1,050.0	25.50	37.49	1,022.2	147.6	113.2	186.0	3.00	3.00	
1,080.0	26.40	37.49	1,049.2	158.0	121.2	199.2	3.00	3.00	
1,110.0	27.30	37.49	1,076.0	168.8	129.5	212.7	3.00	3.00	
1,140.0	28.20	37.49	1,102.5	179.9	138.0	226.7	3.00	3.00	
1,170.0	29.10	37.49	1,128.8	191.3	146.7	241.1	3.00	3.00	
1,200.0	30.00	37.49	1,154.9	203.0	155.7	255.9	3.00	3.00	
1,230.0	30.90	37.49	1,180.8	215.1	165.0	271.1	3.00	3.00	
1,260.0	31.80	37.49	1,206.4	227.5	174.5	286.7	3.00	3.00	
1,290.0	32.70	37.49	1,231.8	240.2	184.2	302.7	3.00	3.00	
1,320.0	33.60	37.49	1,256.9	253.2	194.2	319.1	3.00	3.00	
1,350.0	34.50	37.49	1,281.8	266.5	204.4	335.9	3.00	3.00	
1,380.0	35.40	37.49	1,306.3	280.2	214.9	353.1	3.00	3.00	
1,410.0	36.30	37.49	1,330.7	294.1	225.6	370.6	3.00	3.00	
1,440.0	37.20	37.49	1,354.7	308.3	236.5	388.6	3.00	3.00	
1,470.0	38.10	37.49	1,378.5	322.9	247.7	406.9	3.00	3.00	
1,500.0	39.00	37.49	1,401.9	337.7	259.0	425.6	3.00	3.00	

Planning Report

Database:	EDM 2003.21 US Multi User DB	Local Co-ordinate Reference:	Well WF14B-24 H26 596
Company:	EnCana Oil & Gas (USA) Inc	TVD Reference:	WELL @ 6114.0ft (Original Well Elev)
Project:	North Piceance	MD Reference:	WELL @ 6114.0ft (Original Well Elev)
Site:	H26 596	North Reference:	True
Well:	WF14B-24 H26 596	Survey Calculation Method:	Minimum Curvature
Wellbore:	DD		
Design:	Plan #2		

Planned Survey

Measured Depth (ft)	Inclination (°)	Azimuth (°)	Vertical Depth (ft)	+N/-S (ft)	+E/-W (ft)	Vertical Section (ft)	Dogleg Rate (°/100ft)	Build Rate (°/100ft)	Comments / Formations
1,530.0	39.90	37.49	1,425.1	352.8	270.6	444.7	3.00	3.00	
1,560.0	40.80	37.49	1,447.9	368.2	282.5	464.1	3.00	3.00	
1,590.0	41.70	37.49	1,470.5	383.9	294.5	483.9	3.00	3.00	
1,620.0	42.60	37.49	1,492.7	399.9	306.8	504.0	3.00	3.00	
1,643.9	43.32	37.49	1,510.2	412.8	316.7	520.3	3.00	3.00	EOB; Inc=43.3°
1,650.0	43.32	37.49	1,514.7	416.2	319.2	524.5	0.00	0.00	
1,680.0	43.32	37.49	1,536.5	432.5	331.7	545.1	0.00	0.00	
1,710.0	43.32	37.49	1,558.3	448.8	344.3	565.6	0.00	0.00	
1,740.0	43.32	37.49	1,580.1	465.1	356.8	586.2	0.00	0.00	
1,770.0	43.32	37.49	1,602.0	481.5	369.3	606.8	0.00	0.00	
1,800.0	43.32	37.49	1,623.8	497.8	381.8	627.4	0.00	0.00	
1,830.0	43.32	37.49	1,645.6	514.1	394.4	648.0	0.00	0.00	
1,860.0	43.32	37.49	1,667.5	530.5	406.9	668.6	0.00	0.00	
1,890.0	43.32	37.49	1,689.3	546.8	419.4	689.1	0.00	0.00	
1,920.0	43.32	37.49	1,711.1	563.1	432.0	709.7	0.00	0.00	
1,950.0	43.32	37.49	1,732.9	579.5	444.5	730.3	0.00	0.00	
1,980.0	43.32	37.49	1,754.8	595.8	457.0	750.9	0.00	0.00	
2,010.0	43.32	37.49	1,776.6	612.1	469.5	771.5	0.00	0.00	
2,040.0	43.32	37.49	1,798.4	628.4	482.1	792.0	0.00	0.00	
2,070.0	43.32	37.49	1,820.2	644.8	494.6	812.6	0.00	0.00	
2,100.0	43.32	37.49	1,842.1	661.1	507.1	833.2	0.00	0.00	
2,130.0	43.32	37.49	1,863.9	677.4	519.6	853.8	0.00	0.00	
2,160.0	43.32	37.49	1,885.7	693.8	532.2	874.4	0.00	0.00	
2,190.0	43.32	37.49	1,907.6	710.1	544.7	894.9	0.00	0.00	
2,220.0	43.32	37.49	1,929.4	726.4	557.2	915.5	0.00	0.00	
2,250.0	43.32	37.49	1,951.2	742.8	569.7	936.1	0.00	0.00	
2,280.0	43.32	37.49	1,973.0	759.1	582.3	956.7	0.00	0.00	
2,310.0	43.32	37.49	1,994.9	775.4	594.8	977.3	0.00	0.00	
2,340.0	43.32	37.49	2,016.7	791.7	607.3	997.8	0.00	0.00	
2,370.0	43.32	37.49	2,038.5	808.1	619.8	1,018.4	0.00	0.00	
2,400.0	43.32	37.49	2,060.3	824.4	632.4	1,039.0	0.00	0.00	
2,430.0	43.32	37.49	2,082.2	840.7	644.9	1,059.6	0.00	0.00	
2,460.0	43.32	37.49	2,104.0	857.1	657.4	1,080.2	0.00	0.00	
2,490.0	43.32	37.49	2,125.8	873.4	669.9	1,100.7	0.00	0.00	

Planning Report

Database:	EDM 2003.21 US Multi User DB	Local Co-ordinate Reference:	Well WF14B-24 H26 596
Company:	EnCana Oil & Gas (USA) Inc	TVD Reference:	WELL @ 6114.0ft (Original Well Elev)
Project:	North Piceance	MD Reference:	WELL @ 6114.0ft (Original Well Elev)
Site:	H26 596	North Reference:	True
Well:	WF14B-24 H26 596	Survey Calculation Method:	Minimum Curvature
Wellbore:	DD		
Design:	Plan #2		

Planned Survey									
Measured Depth (ft)	Inclination (°)	Azimuth (°)	Vertical Depth (ft)	+N/-S (ft)	+E/-W (ft)	Vertical Section (ft)	Dogleg Rate (°/100ft)	Build Rate (°/100ft)	Comments / Formations
2,500.0	43.32	37.49	2,133.1	878.8	674.1	1,107.6	0.00	0.00	
2,600.0	43.32	37.49	2,205.9	933.3	715.9	1,176.2	0.00	0.00	
2,700.0	43.32	37.49	2,278.6	987.7	757.6	1,244.8	0.00	0.00	
2,800.0	43.32	37.49	2,351.4	1,042.1	799.4	1,313.4	0.00	0.00	
2,900.0	43.32	37.49	2,424.1	1,096.6	841.1	1,382.0	0.00	0.00	
2,911.7	43.32	37.49	2,432.6	1,102.9	846.0	1,390.0	0.00	0.00	Exit Williams Minerals @ 2432' TVD
3,000.0	43.32	37.49	2,496.9	1,151.0	882.9	1,450.6	0.00	0.00	
3,100.0	43.32	37.49	2,569.7	1,205.4	924.6	1,519.2	0.00	0.00	
3,200.0	43.32	37.49	2,642.4	1,259.9	966.4	1,587.8	0.00	0.00	
3,300.0	43.32	37.49	2,715.2	1,314.3	1,008.1	1,656.4	0.00	0.00	
3,400.0	43.32	37.49	2,787.9	1,368.7	1,049.9	1,725.0	0.00	0.00	
3,500.0	43.32	37.49	2,860.7	1,423.2	1,091.7	1,793.6	0.00	0.00	
3,600.0	43.32	37.49	2,933.4	1,477.6	1,133.4	1,862.2	0.00	0.00	
3,700.0	43.32	37.49	3,006.2	1,532.0	1,175.2	1,930.8	0.00	0.00	
3,800.0	43.32	37.49	3,079.0	1,586.5	1,216.9	1,999.4	0.00	0.00	
3,900.0	43.32	37.49	3,151.7	1,640.9	1,258.7	2,068.0	0.00	0.00	
4,000.0	43.32	37.49	3,224.5	1,695.3	1,300.4	2,136.6	0.00	0.00	
4,100.0	43.32	37.49	3,297.2	1,749.8	1,342.2	2,205.2	0.00	0.00	
4,200.0	43.32	37.49	3,370.0	1,804.2	1,383.9	2,273.9	0.00	0.00	
4,300.0	43.32	37.49	3,442.7	1,858.6	1,425.7	2,342.5	0.00	0.00	
4,400.0	43.32	37.49	3,515.5	1,913.1	1,467.4	2,411.1	0.00	0.00	
4,500.0	43.32	37.49	3,588.3	1,967.5	1,509.2	2,479.7	0.00	0.00	
4,600.0	43.32	37.49	3,661.0	2,021.9	1,550.9	2,548.3	0.00	0.00	
4,700.0	43.32	37.49	3,733.8	2,076.4	1,592.7	2,616.9	0.00	0.00	
4,800.0	43.32	37.49	3,806.5	2,130.8	1,634.5	2,685.5	0.00	0.00	
4,900.0	43.32	37.49	3,879.3	2,185.2	1,676.2	2,754.1	0.00	0.00	
5,000.0	43.32	37.49	3,952.0	2,239.7	1,718.0	2,822.7	0.00	0.00	
5,100.0	43.32	37.49	4,024.8	2,294.1	1,759.7	2,891.3	0.00	0.00	
5,200.0	43.32	37.49	4,097.6	2,348.5	1,801.5	2,959.9	0.00	0.00	
5,300.0	43.32	37.49	4,170.3	2,403.0	1,843.2	3,028.5	0.00	0.00	
5,400.0	43.32	37.49	4,243.1	2,457.4	1,885.0	3,097.1	0.00	0.00	
5,500.0	43.32	37.49	4,315.8	2,511.8	1,926.7	3,165.7	0.00	0.00	
5,600.0	43.32	37.49	4,388.6	2,566.3	1,968.5	3,234.3	0.00	0.00	
5,700.0	43.32	37.49	4,461.4	2,620.7	2,010.2	3,302.9	0.00	0.00	
5,800.0	43.32	37.49	4,534.1	2,675.1	2,052.0	3,371.5	0.00	0.00	
5,900.0	43.32	37.49	4,606.9	2,729.6	2,093.7	3,440.1	0.00	0.00	
6,000.0	43.32	37.49	4,679.6	2,784.0	2,135.5	3,508.7	0.00	0.00	
6,088.2	43.32	37.49	4,743.8	2,832.0	2,172.3	3,569.2	0.00	0.00	Start Drop -3.00
6,100.0	42.96	37.49	4,752.4	2,838.4	2,177.2	3,577.3	3.00	-3.00	
6,200.0	39.96	37.49	4,827.3	2,890.9	2,217.5	3,643.5	3.00	-3.00	
6,300.0	36.96	37.49	4,905.6	2,940.3	2,255.4	3,705.7	3.00	-3.00	
6,400.0	33.96	37.49	4,987.1	2,986.3	2,290.7	3,763.7	3.00	-3.00	
6,500.0	30.96	37.49	5,071.4	3,028.9	2,323.3	3,817.3	3.00	-3.00	
6,600.0	27.96	37.49	5,158.5	3,067.9	2,353.3	3,866.5	3.00	-3.00	
6,700.0	24.96	37.49	5,248.0	3,103.3	2,380.4	3,911.1	3.00	-3.00	
6,800.0	21.96	37.49	5,339.7	3,134.9	2,404.6	3,950.9	3.00	-3.00	
6,900.0	18.96	37.49	5,433.4	3,162.6	2,425.9	3,985.8	3.00	-3.00	
6,984.6	16.42	37.49	5,514.0	3,183.0	2,441.5	4,011.6	3.00	-3.00	Williams Fork
7,000.0	15.96	37.49	5,528.8	3,186.4	2,444.2	4,015.8	3.00	-3.00	
7,026.2	15.18	37.49	5,554.0	3,192.0	2,448.4	4,022.9	3.00	-3.00	Top of Gas; Inc=15°
7,100.0	12.96	37.49	5,625.6	3,206.2	2,459.4	4,040.8	3.00	-3.00	
7,200.0	9.96	37.49	5,723.6	3,222.0	2,471.4	4,060.7	3.00	-3.00	

Planning Report

Database:	EDM 2003.21 US Multi User DB	Local Co-ordinate Reference:	Well WF14B-24 H26 596
Company:	EnCana Oil & Gas (USA) Inc	TVD Reference:	WELL @ 6114.0ft (Original Well Elev)
Project:	North Piceance	MD Reference:	WELL @ 6114.0ft (Original Well Elev)
Site:	H26 596	North Reference:	True
Well:	WF14B-24 H26 596	Survey Calculation Method:	Minimum Curvature
Wellbore:	DD		
Design:	Plan #2		

Planned Survey									
Measured Depth (ft)	Inclination (°)	Azimuth (°)	Vertical Depth (ft)	+N/-S (ft)	+E/-W (ft)	Vertical Section (ft)	Dogleg Rate (°/100ft)	Build Rate (°/100ft)	Comments / Formations
7,300.0	6.96	37.49	5,822.5	3,233.7	2,480.4	4,075.4	3.00	-3.00	
7,400.0	3.96	37.49	5,922.0	3,241.2	2,486.2	4,084.9	3.00	-3.00	
7,500.0	0.96	37.49	6,021.9	3,244.6	2,488.8	4,089.2	3.00	-3.00	
7,532.1	0.00	0.00	6,054.0	3,244.8	2,489.0	4,089.5	3.00	-3.00	EOD; Inc=0° - H26 596 WF14B-24 TGT
7,600.0	0.17	239.73	6,121.9	3,244.8	2,488.9	4,089.4	0.25	0.25	
7,700.0	0.42	239.73	6,221.9	3,244.5	2,488.4	4,088.9	0.25	0.25	
7,747.7	0.54	239.73	6,269.6	3,244.3	2,488.1	4,088.5	0.25	0.25	
7,800.0	0.54	239.73	6,321.9	3,244.1	2,487.7	4,088.1	0.00	0.00	
7,900.0	0.54	239.73	6,421.9	3,243.6	2,486.9	4,087.2	0.00	0.00	
8,000.0	0.54	239.73	6,521.9	3,243.1	2,486.0	4,086.3	0.00	0.00	
8,100.0	0.54	239.73	6,621.9	3,242.7	2,485.2	4,085.5	0.00	0.00	
8,200.0	0.54	239.73	6,721.9	3,242.2	2,484.4	4,084.6	0.00	0.00	
8,300.0	0.54	239.73	6,821.9	3,241.7	2,483.6	4,083.7	0.00	0.00	
8,400.0	0.54	239.73	6,921.9	3,241.2	2,482.8	4,082.9	0.00	0.00	
8,500.0	0.54	239.73	7,021.9	3,240.8	2,482.0	4,082.0	0.00	0.00	
8,600.0	0.54	239.73	7,121.9	3,240.3	2,481.2	4,081.1	0.00	0.00	
8,700.0	0.54	239.73	7,221.9	3,239.8	2,480.4	4,080.3	0.00	0.00	
8,800.0	0.54	239.73	7,321.9	3,239.3	2,479.5	4,079.4	0.00	0.00	
8,900.0	0.54	239.73	7,421.9	3,238.9	2,478.7	4,078.5	0.00	0.00	
9,000.0	0.54	239.73	7,521.9	3,238.4	2,477.9	4,077.6	0.00	0.00	
9,100.0	0.54	239.73	7,621.9	3,237.9	2,477.1	4,076.8	0.00	0.00	
9,200.0	0.54	239.73	7,721.9	3,237.4	2,476.3	4,075.9	0.00	0.00	
9,300.0	0.54	239.73	7,821.9	3,237.0	2,475.5	4,075.0	0.00	0.00	
9,400.0	0.54	239.73	7,921.9	3,236.5	2,474.7	4,074.2	0.00	0.00	
9,500.0	0.54	239.73	8,021.9	3,236.0	2,473.9	4,073.3	0.00	0.00	
9,600.0	0.54	239.73	8,121.8	3,235.5	2,473.0	4,072.4	0.00	0.00	
9,700.0	0.54	239.73	8,221.8	3,235.1	2,472.2	4,071.6	0.00	0.00	
9,800.0	0.54	239.73	8,321.8	3,234.6	2,471.4	4,070.7	0.00	0.00	
9,900.0	0.54	239.73	8,421.8	3,234.1	2,470.6	4,069.8	0.00	0.00	
10,000.0	0.54	239.73	8,521.8	3,233.6	2,469.8	4,068.9	0.00	0.00	
10,100.0	0.54	239.73	8,621.8	3,233.2	2,469.0	4,068.1	0.00	0.00	
10,200.0	0.54	239.73	8,721.8	3,232.7	2,468.2	4,067.2	0.00	0.00	
10,300.0	0.54	239.73	8,821.8	3,232.2	2,467.4	4,066.3	0.00	0.00	
10,400.0	0.54	239.73	8,921.8	3,231.7	2,466.5	4,065.5	0.00	0.00	
10,500.0	0.54	239.73	9,021.8	3,231.3	2,465.7	4,064.6	0.00	0.00	
10,592.2	0.54	239.73	9,114.0	3,230.8	2,465.0	4,063.8	0.00	0.00	Rollins - H26 596 WF14B-24 BHL
10,600.0	0.54	239.73	9,121.8	3,230.8	2,464.9	4,063.7	0.00	0.00	
10,667.2	0.54	239.73	9,189.0	3,230.5	2,464.4	4,063.1	0.00	0.00	Drillers TD @ 10667' MD
10,700.0	0.54	239.73	9,221.8	3,230.3	2,464.1	4,062.9	0.00	0.00	
10,800.0	0.54	239.73	9,321.8	3,229.9	2,463.3	4,062.0	0.00	0.00	
10,900.0	0.54	239.73	9,421.8	3,229.4	2,462.5	4,061.1	0.00	0.00	
11,000.0	0.54	239.73	9,521.8	3,228.9	2,461.7	4,060.3	0.00	0.00	
11,100.0	0.54	239.73	9,621.8	3,228.4	2,460.9	4,059.4	0.00	0.00	
11,200.0	0.54	239.73	9,721.8	3,228.0	2,460.0	4,058.5	0.00	0.00	
11,300.0	0.54	239.73	9,821.8	3,227.5	2,459.2	4,057.6	0.00	0.00	
11,400.0	0.54	239.73	9,921.8	3,227.0	2,458.4	4,056.8	0.00	0.00	
11,500.0	0.54	239.73	10,021.8	3,226.5	2,457.6	4,055.9	0.00	0.00	
11,600.0	0.54	239.73	10,121.8	3,226.1	2,456.8	4,055.0	0.00	0.00	
11,700.0	0.54	239.73	10,221.8	3,225.6	2,456.0	4,054.2	0.00	0.00	
11,800.0	0.54	239.73	10,321.8	3,225.1	2,455.2	4,053.3	0.00	0.00	
11,900.0	0.54	239.73	10,421.7	3,224.6	2,454.4	4,052.4	0.00	0.00	
11,978.3	0.54	239.73	10,500.0	3,224.3	2,453.7	4,051.7	0.00	0.00	

Planning Report

Database:	EDM 2003.21 US Multi User DB	Local Co-ordinate Reference:	Well WF14B-24 H26 596
Company:	EnCana Oil & Gas (USA) Inc	TVD Reference:	WELL @ 6114.0ft (Original Well Elev)
Project:	North Piceance	MD Reference:	WELL @ 6114.0ft (Original Well Elev)
Site:	H26 596	North Reference:	True
Well:	WF14B-24 H26 596	Survey Calculation Method:	Minimum Curvature
Wellbore:	DD		
Design:	Plan #2		

Targets									
Target Name									
- hit/miss target	Dip Angle	Dip Dir.	TVD	+N/-S	+E/-W	Northing	Easting	Latitude	Longitude
- Shape	(°)	(°)	(ft)	(ft)	(ft)	(ft)	(ft)		
H26 596 WF14B-24 TG1	0.00	0.00	6,054.0	3,244.8	2,489.0	1,652,470.00	2,261,561.18	39° 35' 44.05 N	108° 7' 14.89 W
- plan hits target center									
- Point									
H26 596 WF14B-24 BHL	0.00	0.00	9,114.0	3,230.8	2,465.0	1,652,456.70	2,261,536.80	39° 35' 43.91 N	108° 7' 15.20 W
- plan hits target center									
- Rectangle (sides W30.0 H50.0 D0.0)									

Formations					
Measured Depth	Vertical Depth	Name	Lithology	Dip	Dip Direction
(ft)	(ft)			(°)	(°)
6,984.6	5,514.0	Williams Fork		0.00	
7,026.2	5,554.0	Top of Gas; Inc=15°		0.00	
10,592.2	9,114.0	Rollins		0.00	

Plan Annotations				
Measured Depth	Vertical Depth	Local Coordinates		Comment
(ft)	(ft)	+N/-S (ft)	+E/-W (ft)	
200.0	200.0	0.0	0.0	KOP @ 200'
1,643.9	1,510.2	412.8	316.7	EOB; Inc=43.3°
2,911.7	2,432.6	1,102.9	846.0	Exit Williams Minerals @ 2432' TVD
6,088.2	4,743.8	2,832.0	2,172.3	Start Drop -3.00
7,532.1	6,054.0	3,244.8	2,489.0	EOD; Inc=0°
10,667.2	9,189.0	3,230.5	2,464.4	Drillers TD @ 10667' MD
11,978.3	10,500.0	3,224.3	2,453.7	Permit TD @ 11978' MD