



1692700



November 17, 2009

Director
Colorado Oil and Gas Conservation Commission
1120 Lincoln St, Suite 801
Denver, CO 80203

Re: 20 Day Certification Letter – Rule 318A(e)
SRC-State 16TD
Township 4 North, Range 67 West
Section 16: SESE
Weld County, Colorado

Dear Director,

Synergy Resources Corporation hereby certifies to the Director that a twenty-day notice has been mailed to all owners in the proposed well-bore spacing unit for the above described well. We have not received any objections to such well location or proposed spacing unit, therefore, Synergy Resources Corporation hereby requests that the Director approve the boundary well.

If you have any questions or issues regarding this permit, please contact Craig Rasmuson at (970) 737-1073.

Sincerely,

Craig Rasmuson
Manager of Land and Field Operations



Certified Mail – Return Receipt

October 28, 2009



Noble Energy, Inc.
Dave Padgett
1625 Broadway, Suite 2000
Denver, CO 80202

Re: Notice of 318A(e) Well Proposal
SRC-State 16TD
Township 4 North, Range 67 West
Section 16: SE¼
Weld County, Colorado

Dear Working Interest Owner:

Synergy Resources Corporation ("Synergy") intends to propose, drill and operate the referenced well pursuant to paragraph 6 of Rule 318A(e), Order 1R-100 of the Colorado Oil and Gas Conservation Commission. Synergy hereby proposes the well as follows:

1. **Surface and Bottom hole Locations:**
Surface Location: 1375' FSL, 2532' FWL, Sec. 16, T4N, R67W
Bottom Hole Location: 200' FSL, 950' FEL, Sec. 16, T4N, R67W
2. **Wellbore Spacing Unit:**
S½ SE¼, Sec. 16, T4N, R67W
N½ NE¼, Sec. 21, T4N, R67W
See Attached Map.
3. **Target Formations:**
The well will be drilled to a total depth sufficient to test the Codell/
Niobrara.
4. **Anticipated Spud Date:**
December 20, 2009

Pursuant to the aforementioned rule, you have twenty (20) days from your receipt of this notice to object to this proposal. In the event you do not respond to this notice or enter an objection within the established time period, the proposed 160-acre spacing unit set forth herein shall be established. However, should you have no objection to this proposal, please so indicate by signing in the space provided below and returning one (1) copy to us by fax or mail as soon as conveniently possible. Your cooperation in this matter is greatly appreciated so that Synergy may timely continue the permitting process for this well.

A formal well proposal, including AFE and JOA will be forthcoming under separate cover.

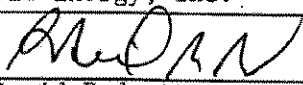
Please call me at 970-737-1073 should you have any questions. Thank you for your timely consideration and response to this proposal.

Sincerely,



Craig Rasmuson
Manager of Land and Field Operation
Synergy Resources Corporation

The undersigned hereby waives the minimum twenty (20) day written notice requirement as specified in paragraph 6 of Rule 318A(e), Order 1R-100 of the Colorado Oil and Gas Conservation Commission for the

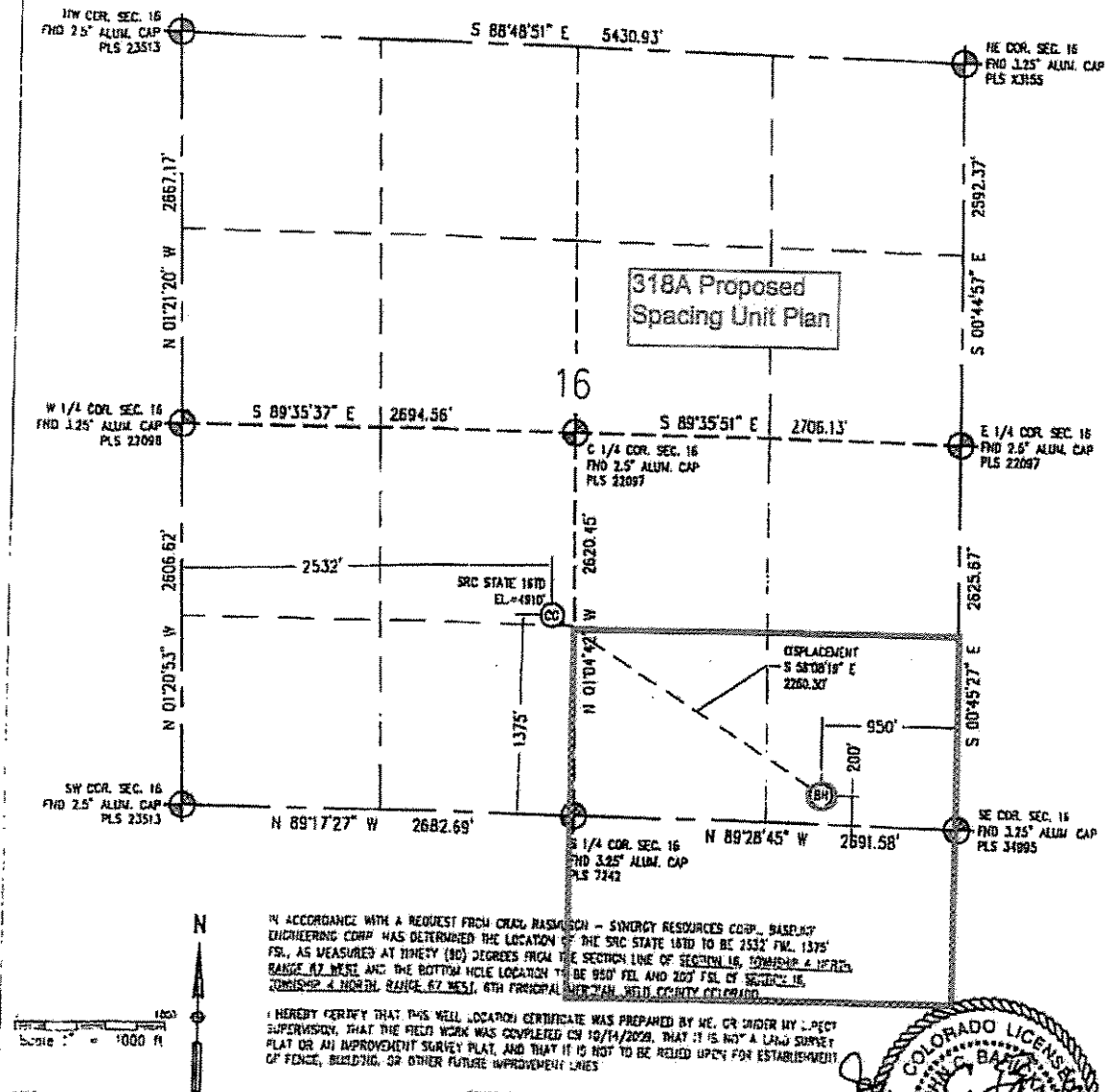
Company: Noble Energy, Inc.
By: 
Title: P. David Padgett
Attorney-In-Fact
Date: Nov 17, 2009

Baseline Engineering Corp. 710 11th Avenue Suite 105 Greeley, Colorado 80631

WELL LOCATION CERTIFICATE

THIS MAP DOES NOT REPRESENT A BOUNDARY SURVEY

SECTION 16
TOWNSHIP 4 NORTH
RANGE 67 WEST



NOTES

- 1) LAT/LONG SHOWN ARE BASED ON A GPS OBSERVATION (NAD83)
- 2) BEARINGS SHOWN ARE GRID BEARINGS OF THE COLORADO STATE PLAIN COORDINATE SYSTEM, NORTH ZONE, NORTH AMERICAN DATUM 1983/2011
- 3) GROUND ELEVATIONS ARE BASED ON A GPS OBSERVATION (NAD 88 DATUM)
- 4) ALL DISTANCES SHOWN ARE FIELD MEASURED UNLESS OTHERWISE NOTED.
- 5) IMPROVEMENTS: SEE VISUAL IMPROVEMENTS EXHIBIT FOR ALL VISIBLE IMPROVEMENTS WITHIN 400' OF WELL HEAD.
- 6) SURFACE USE: WHEAT FIELD

LATITUDE & LONGITUDE (NAD 83 SURFACE HOLE)

LATITUDE: N 40.309292°
LONGITUDE: W 104.886666°
FIDP: 1.5
1/4, 1/4 NE1/4SW1/4
NEAREST PROPERTY LINE: 155' E
BOTTOM HOLE:
LATITUDE: N 40.305882°
LONGITUDE: W 104.889814°

LEGEND

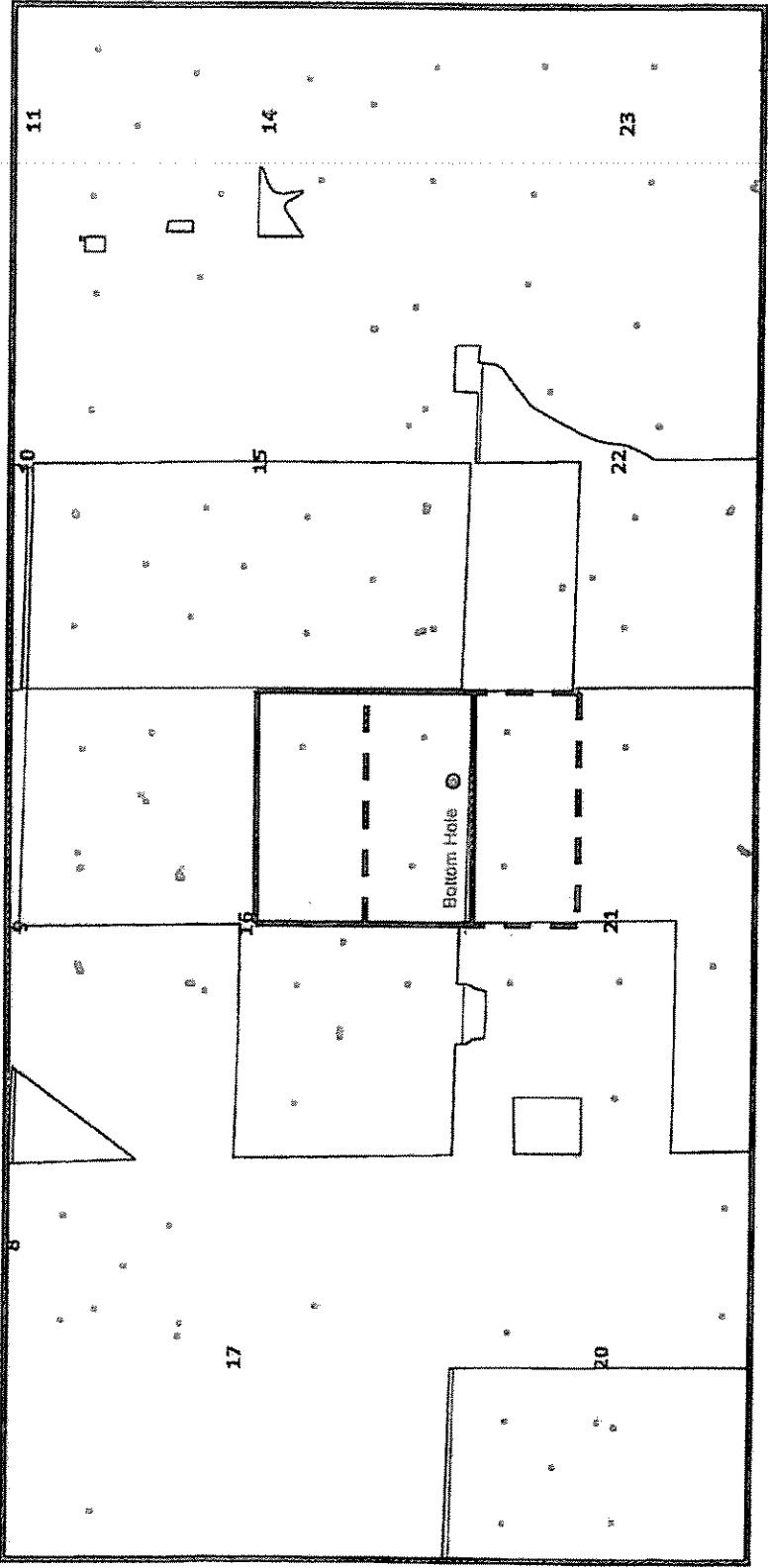
- - FOUND/SET SURVEY MONUMENT FOR MONUMENT RECORD EXCEPTIONS NOTED
- - CALCULATED SURVEY MONUMENT POSITION
- (C) - CALCULATED DIVISION

NOTICE: According to Colorado law you MUST commence any legal action based upon any defect in this M.L.C. within three years after you first discover such defect. In no event may any action based upon any defect in this M.L.C. be commenced more than ten years from this date of the certification above.

John C. [Signature]
Colorado License No. 28258
Professional Land Surveyor
FOR AND ON BEHALF OF BASELINE ENGINEERING CORP

JOB # SYMANETW18-01

SRC State 16TD
Sec.16, T.4N, R.67W



LEGEND

— Proposed 160 acre Spacing Unit (Solid Line)

- - - Bottom Hole Located 200' FSL, 950' FEL, Sec. 16, T.4N, R.67W