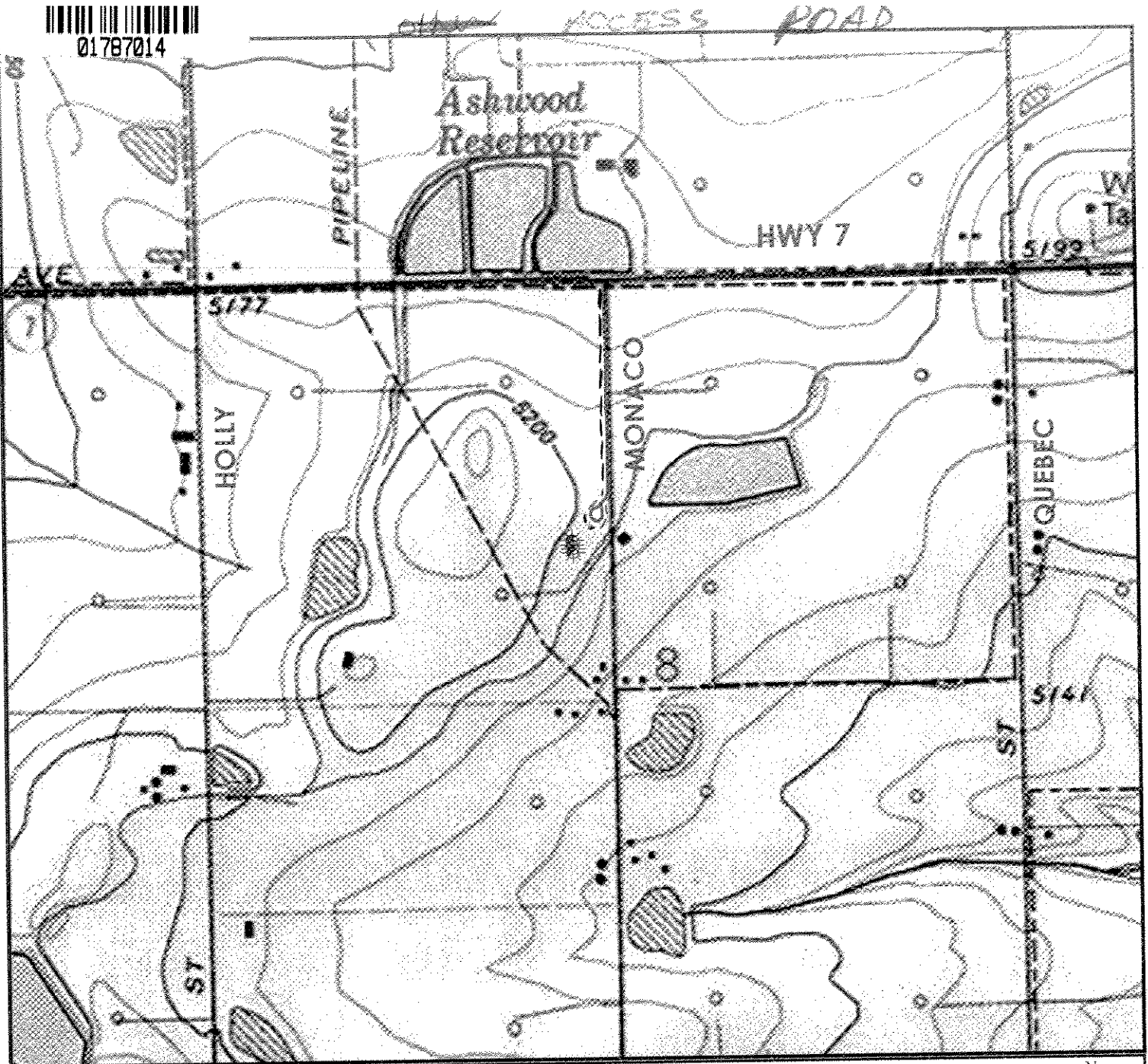




01787014



0 400 800 1,600 Feet

Legend

- Proposed Well
- Access Road

RECEIVED

OCT 27 2009

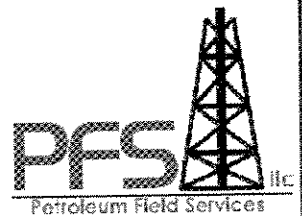
COGCC

Vicinity Map**STONEHOCKER 11-8H
Multi Well Pad**

Surface Location: T1S R67W S8

Field Date: 10/01/2009
Drawing Date: 10/02/2009
Drafter: DMM
Checked By: MPS

Prepared for:
**BLUECHIP
OIL INC**



Use our resources to find yours!
www.petro-fs.com

1801 W. 13th Ave Suite 207
Denver, CO 80204
(303) 928-7128
111 E. Third Street
Rifle, CO 81650
(970) 625-4740