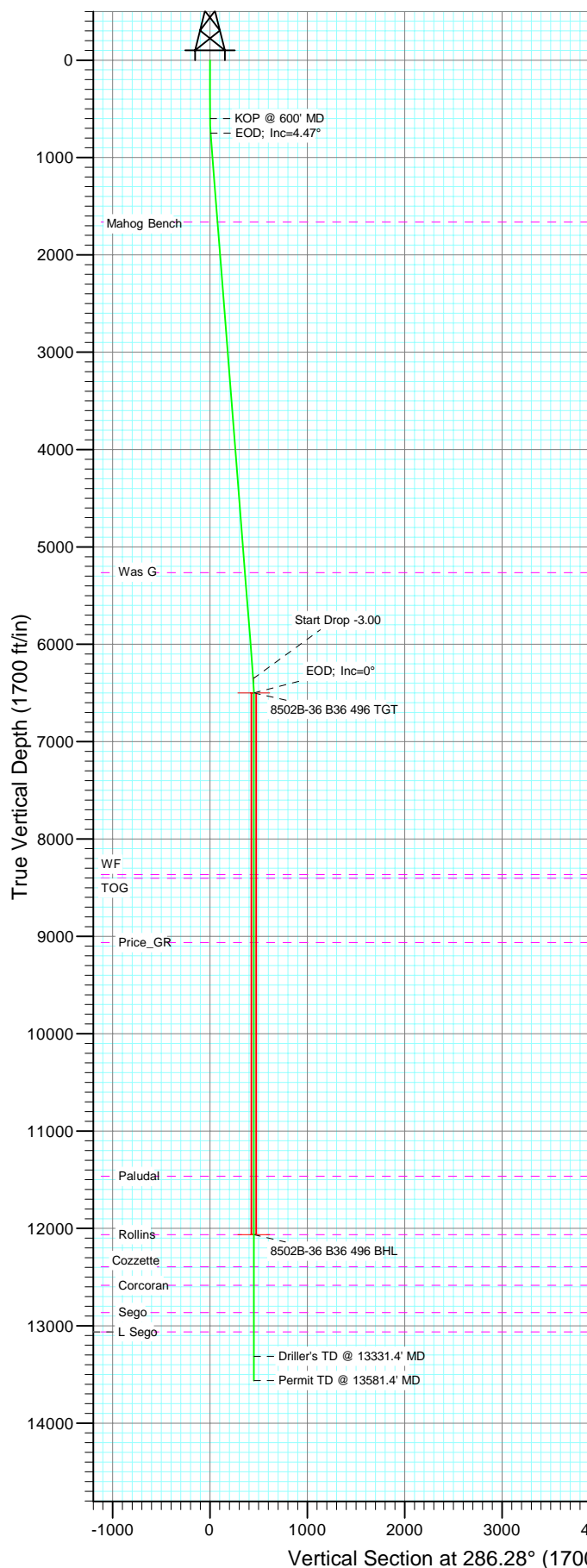
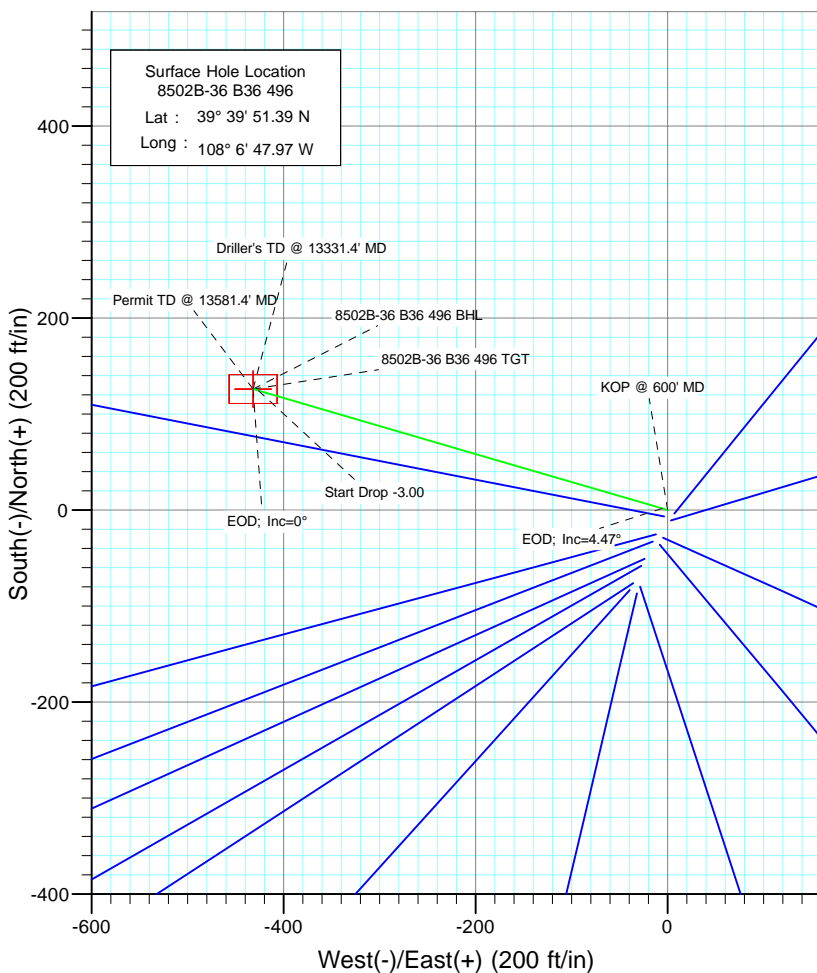




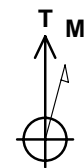
Project: Story Gulch  
Site: S36-T4S-R96W (B36 496)  
Well: 8502B-36 B36 496  
Wellbore: DD  
Design: Plan #1



SECTION DETAILS										
Sec	MD	Inc	Azi	TVD	+N/-S	+E/-W	DLeg	TFace	VSec	Target
1	0.0	0.00	0.00	0.0	0.0	0.0	0.00	0.00	0.0	
2	600.0	0.00	0.00	600.0	0.0	0.0	0.00	0.00	0.0	
3	749.1	4.47	286.28	748.9	1.6	-5.6	3.00	286.28	5.8	
4	6368.3	4.47	286.28	6351.1	124.5	-426.2	0.00	0.00	444.0	
5	6517.4	0.00	0.00	6500.0	126.1	-431.8	3.00	180.00	449.8	8502B-36 B36 496 TGT
6	12081.4	0.00	0.00	12064.0	126.1	-431.8	0.00	0.00	449.8	8502B-36 B36 496 BHL
7	13331.4	0.00	0.00	13314.0	126.1	-431.8	0.00	0.00	449.8	
8	13581.4	0.00	0.00	13564.0	126.1	-431.8	0.00	0.00	449.8	



Bottom Hole Location  
8502B-36 B36 496  
Lat : 39 39 52.64N  
Long : 108 6 53.49 W



Azimuths to True North  
Magnetic North: 10.64°  
  
Magnetic Field  
Strength: 52515.9snT  
Dip Angle: 65.92°  
Date: 8/26/2009  
Model: IGRF200510

#### FORMATION TOP DETAILS

TVDPath	MDPath	Formation
1664.0	1666.9	Mahog Bench
5264.0	5277.9	Was G
8364.0	8381.4	WF
8404.0	8421.4	TOG
9064.0	9081.4	Price_GR
11464.0	11481.4	Paludal
12064.0	12081.4	Rollins
12394.0	12411.4	Cozzette
12584.0	12601.4	Corcoran
12864.0	12881.4	Sego
13064.0	13081.4	L Sego

DESIGN DETAILS: Plan #1  
95XXX: BH  
KBE @ 8374.0ft (Original Well Elev)

Target	Azimuth	Origin	N/S	E/W	From TVD
8502B-36 B36 496 BHL	286.28	Slot	0.0	0.0	0.0

# Directional Plus

## Planning Report

<b>Database:</b>	EDM 2003.21 US Multi User Db	<b>Local Co-ordinate Reference:</b>	Well 8502B-36 B36 496
<b>Company:</b>	EnCana Oil & Gas (USA) Inc	<b>TVD Reference:</b>	KBE @ 8374.0ft (Original Well Elev)
<b>Project:</b>	Story Gulch	<b>MD Reference:</b>	KBE @ 8374.0ft (Original Well Elev)
<b>Site:</b>	S36-T4S-R96W (B36 496)	<b>North Reference:</b>	True
<b>Well:</b>	8502B-36 B36 496	<b>Survey Calculation Method:</b>	Minimum Curvature
<b>Wellbore:</b>	DD		
<b>Design:</b>	Plan #1		

<b>Project</b>	Story Gulch		
<b>Map System:</b>	US State Plane 1983	<b>System Datum:</b>	Mean Sea Level
<b>Geo Datum:</b>	North American Datum 1983		
<b>Map Zone:</b>	Colorado Central Zone		

Site		S36-T4S-R96W (B36 496)			
Site Position:		Northing:	1,677,422.27 ft	Latitude:	39° 39' 51.36 N
From:	Lat/Long	Easting:	2,264,394.80 ft	Longitude:	108° 6' 47.88 W
Position Uncertainty:	0.0 ft	Slot Radius:	in	Grid Convergence:	-1.65 °

Well	8502B-36 B36 496					
Well Position	+N/-S	0.0 ft	Northing:	1,677,425.89 ft	Latitude:	39° 39' 51.39 N
	+E/-W	0.0 ft	Easting:	2,264,387.75 ft	Longitude:	108° 6' 47.97 W
Position Uncertainty		0.0 ft	Wellhead Elevation:	ft	Ground Level:	8,352.0 ft

<b>Wellbore</b>	DD				
<b>Magnetics</b>	<b>Model Name</b>	<b>Sample Date</b>	<b>Declination (°)</b>	<b>Dip Angle (°)</b>	<b>Field Strength (nT)</b>
	IGRF200510	8/26/2009	10.64	65.92	52,516

<b>Design</b>	Plan #1				
<b>Audit Notes:</b>					
<b>Version:</b>	<b>Phase:</b>	PLAN		<b>Tie On Depth:</b>	0.0
<b>Vertical Section:</b>	<b>Depth From (TVD) (ft)</b>	<b>+N/-S (ft)</b>	<b>+E/-W (ft)</b>	<b>Direction (°)</b>	
	0.0	0.0	0.0	286.28	

<b>Plan Sections</b>										
Measured Depth (ft)	Inclination (°)	Azimuth (°)	Vertical Depth (ft)	+N/-S (ft)	+E/-W (ft)	Dogleg Rate (°/100ft)	Build Rate (°/100ft)	Turn Rate (°/100ft)	TFO (°)	Target
0.0	0.00	0.00	0.0	0.0	0.0	0.00	0.00	0.00	0.00	
600.0	0.00	0.00	600.0	0.0	0.0	0.00	0.00	0.00	0.00	
749.1	4.47	286.28	748.9	1.6	-5.6	3.00	3.00	0.00	286.28	
6,368.3	4.47	286.28	6,351.1	124.5	-426.2	0.00	0.00	0.00	0.00	
6,517.4	0.00	0.00	6,500.0	126.1	-431.8	3.00	-3.00	0.00	180.00	8502B-36 B36 496 TC
12,081.4	0.00	0.00	12,064.0	126.1	-431.8	0.00	0.00	0.00	0.00	8502B-36 B36 496 BT
13,331.4	0.00	0.00	13,314.0	126.1	-431.8	0.00	0.00	0.00	0.00	
13,581.4	0.00	0.00	13,564.0	126.1	-431.8	0.00	0.00	0.00	0.00	

# Directional Plus

## Planning Report

<b>Database:</b>	EDM 2003.21 US Multi User Db	<b>Local Co-ordinate Reference:</b>	Well 8502B-36 B36 496
<b>Company:</b>	EnCana Oil & Gas (USA) Inc	<b>TVD Reference:</b>	KBE @ 8374.0ft (Original Well Elev)
<b>Project:</b>	Story Gulch	<b>MD Reference:</b>	KBE @ 8374.0ft (Original Well Elev)
<b>Site:</b>	S36-T4S-R96W (B36 496)	<b>North Reference:</b>	True
<b>Well:</b>	8502B-36 B36 496	<b>Survey Calculation Method:</b>	Minimum Curvature
<b>Wellbore:</b>	DD		
<b>Design:</b>	Plan #1		

### Planned Survey

Measured Depth (ft)	Inclination (°)	Azimuth (°)	Vertical Depth (ft)	+N/-S (ft)	+E/-W (ft)	Vertical Section (ft)	Dogleg Rate (°/100ft)	Build Rate (°/100ft)	Comments / Formations
0.0	0.00	0.00	0.0	0.0	0.0	0.0	0.00	0.00	
100.0	0.00	0.00	100.0	0.0	0.0	0.0	0.00	0.00	
200.0	0.00	0.00	200.0	0.0	0.0	0.0	0.00	0.00	
300.0	0.00	0.00	300.0	0.0	0.0	0.0	0.00	0.00	
400.0	0.00	0.00	400.0	0.0	0.0	0.0	0.00	0.00	
500.0	0.00	0.00	500.0	0.0	0.0	0.0	0.00	0.00	
600.0	0.00	0.00	600.0	0.0	0.0	0.0	0.00	0.00	KOP @ 600' MD
700.0	3.00	286.28	700.0	0.7	-2.5	2.6	3.00	3.00	
749.1	4.47	286.28	748.9	1.6	-5.6	5.8	3.00	3.00	EOD; Inc=4.47°
800.0	4.47	286.28	799.7	2.7	-9.4	9.8	0.00	0.00	
900.0	4.47	286.28	899.4	4.9	-16.9	17.6	0.00	0.00	
1,000.0	4.47	286.28	999.1	7.1	-24.4	25.4	0.00	0.00	
1,100.0	4.47	286.28	1,098.8	9.3	-31.8	33.2	0.00	0.00	
1,200.0	4.47	286.28	1,198.5	11.5	-39.3	41.0	0.00	0.00	
1,300.0	4.47	286.28	1,298.2	13.7	-46.8	48.8	0.00	0.00	
1,400.0	4.47	286.28	1,397.9	15.9	-54.3	56.6	0.00	0.00	
1,500.0	4.47	286.28	1,497.6	18.0	-61.8	64.4	0.00	0.00	
1,600.0	4.47	286.28	1,597.3	20.2	-69.3	72.2	0.00	0.00	
1,666.9	4.47	286.28	1,664.0	21.7	-74.3	77.4	0.00	0.00	Mahog Bench
1,700.0	4.47	286.28	1,697.0	22.4	-76.8	80.0	0.00	0.00	
1,800.0	4.47	286.28	1,796.6	24.6	-84.2	87.8	0.00	0.00	
1,900.0	4.47	286.28	1,896.3	26.8	-91.7	95.6	0.00	0.00	
2,000.0	4.47	286.28	1,996.0	29.0	-99.2	103.4	0.00	0.00	
2,100.0	4.47	286.28	2,095.7	31.2	-106.7	111.2	0.00	0.00	
2,200.0	4.47	286.28	2,195.4	33.3	-114.2	118.9	0.00	0.00	
2,300.0	4.47	286.28	2,295.1	35.5	-121.7	126.7	0.00	0.00	
2,400.0	4.47	286.28	2,394.8	37.7	-129.1	134.5	0.00	0.00	
2,500.0	4.47	286.28	2,494.5	39.9	-136.6	142.3	0.00	0.00	
2,600.0	4.47	286.28	2,594.2	42.1	-144.1	150.1	0.00	0.00	
2,700.0	4.47	286.28	2,693.9	44.3	-151.6	157.9	0.00	0.00	
2,800.0	4.47	286.28	2,793.6	46.5	-159.1	165.7	0.00	0.00	
2,900.0	4.47	286.28	2,893.3	48.6	-166.6	173.5	0.00	0.00	
3,000.0	4.47	286.28	2,993.0	50.8	-174.1	181.3	0.00	0.00	
3,100.0	4.47	286.28	3,092.7	53.0	-181.5	189.1	0.00	0.00	
3,200.0	4.47	286.28	3,192.4	55.2	-189.0	196.9	0.00	0.00	
3,300.0	4.47	286.28	3,292.1	57.4	-196.5	204.7	0.00	0.00	
3,400.0	4.47	286.28	3,391.8	59.6	-204.0	212.5	0.00	0.00	
3,500.0	4.47	286.28	3,491.5	61.8	-211.5	220.3	0.00	0.00	
3,600.0	4.47	286.28	3,591.2	63.9	-219.0	228.1	0.00	0.00	
3,700.0	4.47	286.28	3,690.9	66.1	-226.5	235.9	0.00	0.00	
3,800.0	4.47	286.28	3,790.6	68.3	-233.9	243.7	0.00	0.00	
3,900.0	4.47	286.28	3,890.3	70.5	-241.4	251.5	0.00	0.00	
4,000.0	4.47	286.28	3,990.0	72.7	-248.9	259.3	0.00	0.00	
4,100.0	4.47	286.28	4,089.6	74.9	-256.4	267.1	0.00	0.00	
4,200.0	4.47	286.28	4,189.3	77.1	-263.9	274.9	0.00	0.00	
4,300.0	4.47	286.28	4,289.0	79.2	-271.4	282.7	0.00	0.00	
4,400.0	4.47	286.28	4,388.7	81.4	-278.8	290.5	0.00	0.00	
4,500.0	4.47	286.28	4,488.4	83.6	-286.3	298.3	0.00	0.00	
4,600.0	4.47	286.28	4,588.1	85.8	-293.8	306.1	0.00	0.00	
4,700.0	4.47	286.28	4,687.8	88.0	-301.3	313.9	0.00	0.00	
4,800.0	4.47	286.28	4,787.5	90.2	-308.8	321.7	0.00	0.00	
4,900.0	4.47	286.28	4,887.2	92.4	-316.3	329.5	0.00	0.00	

# Directional Plus

## Planning Report

<b>Database:</b>	EDM 2003.21 US Multi User Db	<b>Local Co-ordinate Reference:</b>	Well 8502B-36 B36 496
<b>Company:</b>	EnCana Oil & Gas (USA) Inc	<b>TVD Reference:</b>	KBE @ 8374.0ft (Original Well Elev)
<b>Project:</b>	Story Gulch	<b>MD Reference:</b>	KBE @ 8374.0ft (Original Well Elev)
<b>Site:</b>	S36-T4S-R96W (B36 496)	<b>North Reference:</b>	True
<b>Well:</b>	8502B-36 B36 496	<b>Survey Calculation Method:</b>	Minimum Curvature
<b>Wellbore:</b>	DD		
<b>Design:</b>	Plan #1		

### Planned Survey

Measured Depth (ft)	Inclination (°)	Azimuth (°)	Vertical Depth (ft)	+N/-S (ft)	+E/-W (ft)	Vertical Section (ft)	Dogleg Rate (°/100ft)	Build Rate (°/100ft)	Comments / Formations
5,000.0	4.47	286.28	4,986.9	94.5	-323.8	337.3	0.00	0.00	
5,100.0	4.47	286.28	5,086.6	96.7	-331.2	345.1	0.00	0.00	
5,200.0	4.47	286.28	5,186.3	98.9	-338.7	352.9	0.00	0.00	
5,277.9	4.47	286.28	5,264.0	100.6	-344.6	358.9	0.00	0.00	Was G
5,300.0	4.47	286.28	5,286.0	101.1	-346.2	360.7	0.00	0.00	
5,400.0	4.47	286.28	5,385.7	103.3	-353.7	368.5	0.00	0.00	
5,500.0	4.47	286.28	5,485.4	105.5	-361.2	376.3	0.00	0.00	
5,600.0	4.47	286.28	5,585.1	107.7	-368.7	384.1	0.00	0.00	
5,700.0	4.47	286.28	5,684.8	109.9	-376.1	391.9	0.00	0.00	
5,800.0	4.47	286.28	5,784.5	112.0	-383.6	399.7	0.00	0.00	
5,900.0	4.47	286.28	5,884.2	114.2	-391.1	407.5	0.00	0.00	
6,000.0	4.47	286.28	5,983.9	116.4	-398.6	415.3	0.00	0.00	
6,100.0	4.47	286.28	6,083.6	118.6	-406.1	423.0	0.00	0.00	
6,200.0	4.47	286.28	6,183.3	120.8	-413.6	430.8	0.00	0.00	
6,300.0	4.47	286.28	6,282.9	123.0	-421.1	438.6	0.00	0.00	
6,368.3	4.47	286.28	6,351.1	124.5	-426.2	444.0	0.00	0.00	Start Drop -3.00
6,400.0	3.52	286.28	6,382.7	125.1	-428.3	446.2	3.00	-3.00	
6,500.0	0.52	286.28	6,482.6	126.1	-431.7	449.7	3.00	-3.00	
6,517.4	0.00	0.00	6,500.0	126.1	-431.8	449.8	3.00	-3.00	EOD; Inc=0° - 8502B-36 B36 496 TGT
6,600.0	0.00	0.00	6,582.6	126.1	-431.8	449.8	0.00	0.00	
6,700.0	0.00	0.00	6,682.6	126.1	-431.8	449.8	0.00	0.00	
6,800.0	0.00	0.00	6,782.6	126.1	-431.8	449.8	0.00	0.00	
6,900.0	0.00	0.00	6,882.6	126.1	-431.8	449.8	0.00	0.00	
7,000.0	0.00	0.00	6,982.6	126.1	-431.8	449.8	0.00	0.00	
7,100.0	0.00	0.00	7,082.6	126.1	-431.8	449.8	0.00	0.00	
7,200.0	0.00	0.00	7,182.6	126.1	-431.8	449.8	0.00	0.00	
7,300.0	0.00	0.00	7,282.6	126.1	-431.8	449.8	0.00	0.00	
7,400.0	0.00	0.00	7,382.6	126.1	-431.8	449.8	0.00	0.00	
7,500.0	0.00	0.00	7,482.6	126.1	-431.8	449.8	0.00	0.00	
7,600.0	0.00	0.00	7,582.6	126.1	-431.8	449.8	0.00	0.00	
7,700.0	0.00	0.00	7,682.6	126.1	-431.8	449.8	0.00	0.00	
7,800.0	0.00	0.00	7,782.6	126.1	-431.8	449.8	0.00	0.00	
7,900.0	0.00	0.00	7,882.6	126.1	-431.8	449.8	0.00	0.00	
8,000.0	0.00	0.00	7,982.6	126.1	-431.8	449.8	0.00	0.00	
8,100.0	0.00	0.00	8,082.6	126.1	-431.8	449.8	0.00	0.00	
8,200.0	0.00	0.00	8,182.6	126.1	-431.8	449.8	0.00	0.00	
8,300.0	0.00	0.00	8,282.6	126.1	-431.8	449.8	0.00	0.00	
8,381.4	0.00	0.00	8,364.0	126.1	-431.8	449.8	0.00	0.00	WF
8,400.0	0.00	0.00	8,382.6	126.1	-431.8	449.8	0.00	0.00	
8,421.4	0.00	0.00	8,404.0	126.1	-431.8	449.8	0.00	0.00	TOG
8,500.0	0.00	0.00	8,482.6	126.1	-431.8	449.8	0.00	0.00	
8,600.0	0.00	0.00	8,582.6	126.1	-431.8	449.8	0.00	0.00	
8,700.0	0.00	0.00	8,682.6	126.1	-431.8	449.8	0.00	0.00	
8,800.0	0.00	0.00	8,782.6	126.1	-431.8	449.8	0.00	0.00	
8,900.0	0.00	0.00	8,882.6	126.1	-431.8	449.8	0.00	0.00	
9,000.0	0.00	0.00	8,982.6	126.1	-431.8	449.8	0.00	0.00	
9,081.4	0.00	0.00	9,064.0	126.1	-431.8	449.8	0.00	0.00	Price_GR
9,100.0	0.00	0.00	9,082.6	126.1	-431.8	449.8	0.00	0.00	
9,200.0	0.00	0.00	9,182.6	126.1	-431.8	449.8	0.00	0.00	
9,300.0	0.00	0.00	9,282.6	126.1	-431.8	449.8	0.00	0.00	
9,400.0	0.00	0.00	9,382.6	126.1	-431.8	449.8	0.00	0.00	
9,500.0	0.00	0.00	9,482.6	126.1	-431.8	449.8	0.00	0.00	

# Directional Plus

## Planning Report

<b>Database:</b>	EDM 2003.21 US Multi User Db	<b>Local Co-ordinate Reference:</b>	Well 8502B-36 B36 496
<b>Company:</b>	EnCana Oil & Gas (USA) Inc	<b>TVD Reference:</b>	KBE @ 8374.0ft (Original Well Elev)
<b>Project:</b>	Story Gulch	<b>MD Reference:</b>	KBE @ 8374.0ft (Original Well Elev)
<b>Site:</b>	S36-T4S-R96W (B36 496)	<b>North Reference:</b>	True
<b>Well:</b>	8502B-36 B36 496	<b>Survey Calculation Method:</b>	Minimum Curvature
<b>Wellbore:</b>	DD		
<b>Design:</b>	Plan #1		

Planned Survey									
Measured Depth (ft)	Inclination (°)	Azimuth (°)	Vertical Depth (ft)	+N/-S (ft)	+E/-W (ft)	Vertical Section (ft)	Dogleg Rate (°/100ft)	Build Rate (°/100ft)	Comments / Formations
9,600.0	0.00	0.00	9,582.6	126.1	-431.8	449.8	0.00	0.00	
9,700.0	0.00	0.00	9,682.6	126.1	-431.8	449.8	0.00	0.00	
9,800.0	0.00	0.00	9,782.6	126.1	-431.8	449.8	0.00	0.00	
9,900.0	0.00	0.00	9,882.6	126.1	-431.8	449.8	0.00	0.00	
10,000.0	0.00	0.00	9,982.6	126.1	-431.8	449.8	0.00	0.00	
10,100.0	0.00	0.00	10,082.6	126.1	-431.8	449.8	0.00	0.00	
10,200.0	0.00	0.00	10,182.6	126.1	-431.8	449.8	0.00	0.00	
10,300.0	0.00	0.00	10,282.6	126.1	-431.8	449.8	0.00	0.00	
10,400.0	0.00	0.00	10,382.6	126.1	-431.8	449.8	0.00	0.00	
10,500.0	0.00	0.00	10,482.6	126.1	-431.8	449.8	0.00	0.00	
10,600.0	0.00	0.00	10,582.6	126.1	-431.8	449.8	0.00	0.00	
10,700.0	0.00	0.00	10,682.6	126.1	-431.8	449.8	0.00	0.00	
10,800.0	0.00	0.00	10,782.6	126.1	-431.8	449.8	0.00	0.00	
10,900.0	0.00	0.00	10,882.6	126.1	-431.8	449.8	0.00	0.00	
11,000.0	0.00	0.00	10,982.6	126.1	-431.8	449.8	0.00	0.00	
11,100.0	0.00	0.00	11,082.6	126.1	-431.8	449.8	0.00	0.00	
11,200.0	0.00	0.00	11,182.6	126.1	-431.8	449.8	0.00	0.00	
11,300.0	0.00	0.00	11,282.6	126.1	-431.8	449.8	0.00	0.00	
11,400.0	0.00	0.00	11,382.6	126.1	-431.8	449.8	0.00	0.00	
11,481.4	0.00	0.00	11,464.0	126.1	-431.8	449.8	0.00	0.00	Paludal
11,500.0	0.00	0.00	11,482.6	126.1	-431.8	449.8	0.00	0.00	
11,600.0	0.00	0.00	11,582.6	126.1	-431.8	449.8	0.00	0.00	
11,700.0	0.00	0.00	11,682.6	126.1	-431.8	449.8	0.00	0.00	
11,800.0	0.00	0.00	11,782.6	126.1	-431.8	449.8	0.00	0.00	
11,900.0	0.00	0.00	11,882.6	126.1	-431.8	449.8	0.00	0.00	
12,000.0	0.00	0.00	11,982.6	126.1	-431.8	449.8	0.00	0.00	
12,081.4	0.00	0.00	12,064.0	126.1	-431.8	449.8	0.00	0.00	Rollins - 8502B-36 B36 496 BHL
12,100.0	0.00	0.00	12,082.6	126.1	-431.8	449.8	0.00	0.00	
12,200.0	0.00	0.00	12,182.6	126.1	-431.8	449.8	0.00	0.00	
12,300.0	0.00	0.00	12,282.6	126.1	-431.8	449.8	0.00	0.00	
12,400.0	0.00	0.00	12,382.6	126.1	-431.8	449.8	0.00	0.00	
12,411.4	0.00	0.00	12,394.0	126.1	-431.8	449.8	0.00	0.00	Cozzette
12,500.0	0.00	0.00	12,482.6	126.1	-431.8	449.8	0.00	0.00	
12,600.0	0.00	0.00	12,582.6	126.1	-431.8	449.8	0.00	0.00	
12,601.4	0.00	0.00	12,584.0	126.1	-431.8	449.8	0.00	0.00	Corcoran
12,700.0	0.00	0.00	12,682.6	126.1	-431.8	449.8	0.00	0.00	
12,800.0	0.00	0.00	12,782.6	126.1	-431.8	449.8	0.00	0.00	
12,881.4	0.00	0.00	12,864.0	126.1	-431.8	449.8	0.00	0.00	Sego
12,900.0	0.00	0.00	12,882.6	126.1	-431.8	449.8	0.00	0.00	
13,000.0	0.00	0.00	12,982.6	126.1	-431.8	449.8	0.00	0.00	
13,081.4	0.00	0.00	13,064.0	126.1	-431.8	449.8	0.00	0.00	L Sego
13,100.0	0.00	0.00	13,082.6	126.1	-431.8	449.8	0.00	0.00	
13,200.0	0.00	0.00	13,182.6	126.1	-431.8	449.8	0.00	0.00	
13,300.0	0.00	0.00	13,282.6	126.1	-431.8	449.8	0.00	0.00	
13,331.4	0.00	0.00	13,314.0	126.1	-431.8	449.8	0.00	0.00	Driller's TD @ 13331.4' MD
13,400.0	0.00	0.00	13,382.6	126.1	-431.8	449.8	0.00	0.00	
13,500.0	0.00	0.00	13,482.6	126.1	-431.8	449.8	0.00	0.00	
13,581.4	0.00	0.00	13,564.0	126.1	-431.8	449.8	0.00	0.00	Permit TD @ 13581.4' MD

# Directional Plus

## Planning Report

<b>Database:</b>	EDM 2003.21 US Multi User Db	<b>Local Co-ordinate Reference:</b>	Well 8502B-36 B36 496
<b>Company:</b>	EnCana Oil & Gas (USA) Inc	<b>TVD Reference:</b>	KBE @ 8374.0ft (Original Well Elev)
<b>Project:</b>	Story Gulch	<b>MD Reference:</b>	KBE @ 8374.0ft (Original Well Elev)
<b>Site:</b>	S36-T4S-R96W (B36 496)	<b>North Reference:</b>	True
<b>Well:</b>	8502B-36 B36 496	<b>Survey Calculation Method:</b>	Minimum Curvature
<b>Wellbore:</b>	DD		
<b>Design:</b>	Plan #1		

Targets									
Target Name									
- hit/miss target	Dip Angle	Dip Dir.	TVD	+N/-S	+E/-W	Northing	Easting	Latitude	Longitude
- Shape	(°)	(°)	(ft)	(ft)	(ft)	(ft)	(ft)		
8502B-36 B36 496 TGT	0.00	0.00	6,500.0	126.1	-431.8	1,677,564.35	2,263,959.81	39° 39' 52.64 N	108° 6' 53.49 W
- plan hits target center									
- Point									
8502B-36 B36 496 BHL	0.00	0.00	12,064.0	126.1	-431.8	1,677,564.35	2,263,959.81	39° 39' 52.64 N	108° 6' 53.49 W
- plan hits target center									
- Rectangle (sides W30.0 H50.0 D0.0)									

Formations						
Measured Depth (ft)	Vertical Depth (ft)	Name	Lithology	Dip (°)	Dip Direction (°)	
1,666.9	1,664.0	Mahog Bench		0.00		
5,277.9	5,264.0	Was G		0.00		
8,381.4	8,364.0	WF		0.00		
8,421.4	8,404.0	TOG		0.00		
9,081.4	9,064.0	Price_GR		0.00		
11,481.4	11,464.0	Paludal		0.00		
12,081.4	12,064.0	Rollins		0.00		
12,411.4	12,394.0	Cozzette		0.00		
12,601.4	12,584.0	Corcoran		0.00		
12,881.4	12,864.0	Sego		0.00		
13,081.4	13,064.0	L Sego		0.00		

Plan Annotations				
Measured Depth (ft)	Vertical Depth (ft)	Local Coordinates		Comment
		+N/-S (ft)	+E/-W (ft)	
600.0	600.0	0.0	0.0	KOP @ 600' MD
749.1	748.9	1.6	-5.6	EOD; Inc=4.47°
6,368.3	6,351.1	124.5	-426.2	Start Drop -3.00
6,517.4	6,500.0	126.1	-431.8	EOD; Inc=0°
13,331.4	13,314.0	126.1	-431.8	Driller's TD @ 13331.4' MD
13,581.4	13,564.0	126.1	-431.8	Permit TD @ 13581.4' MD