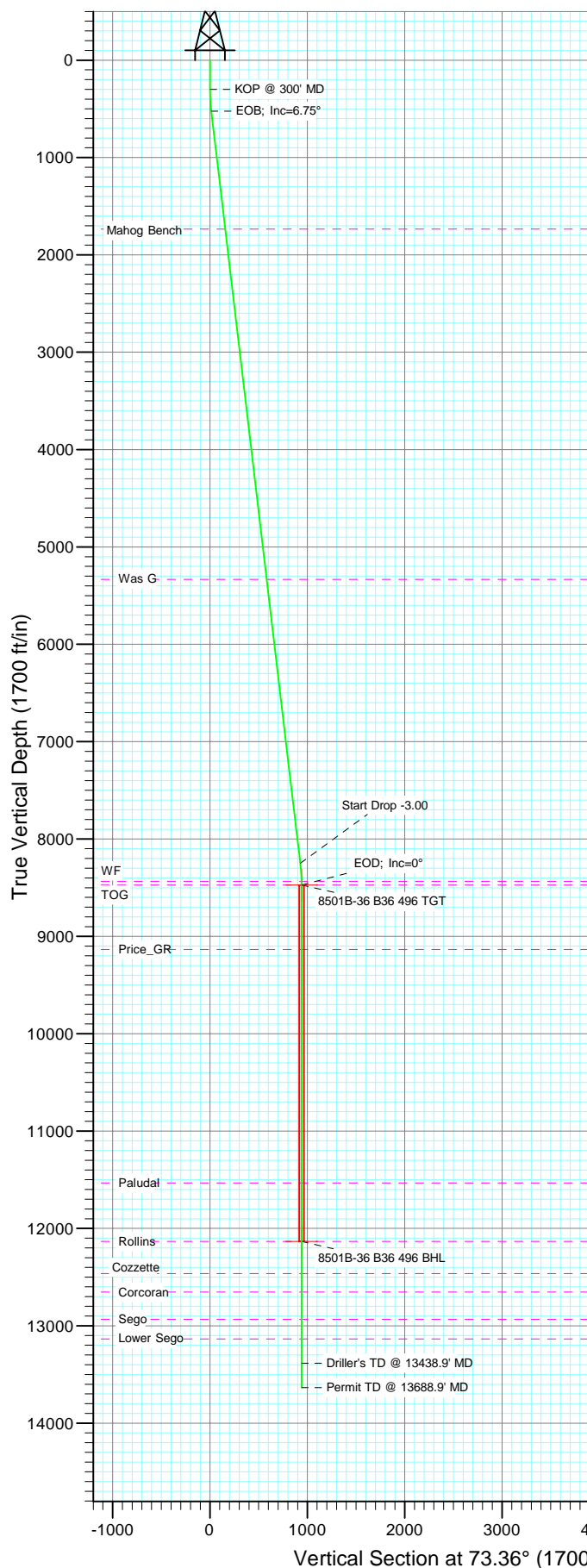
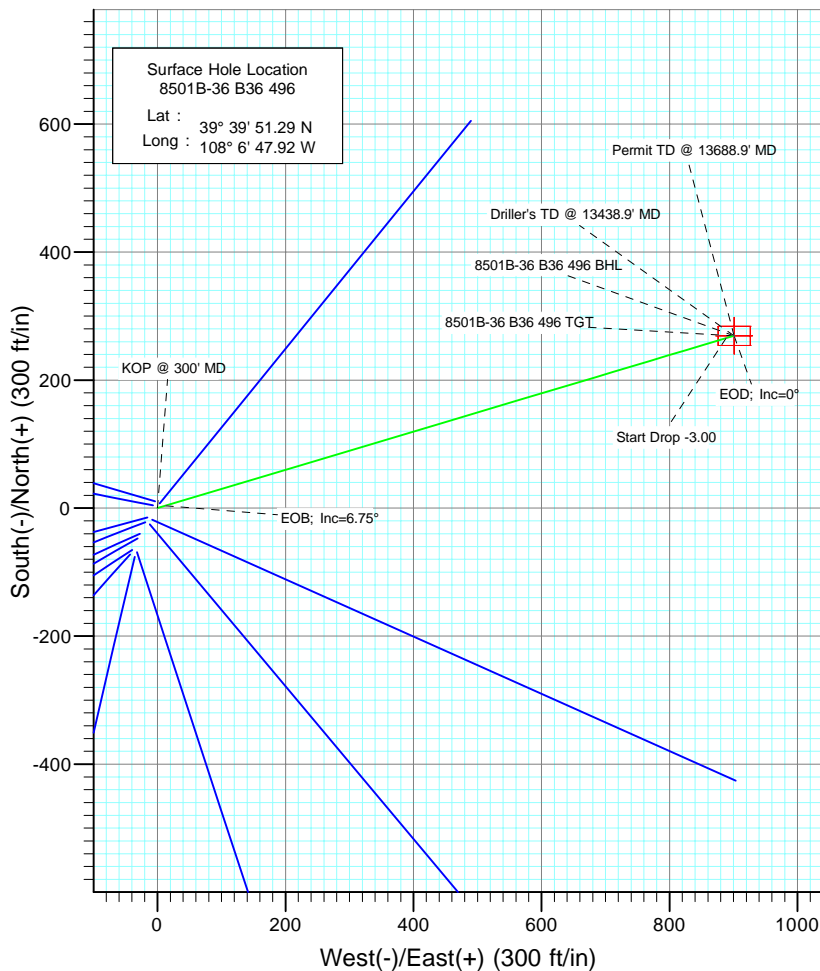




Project: Story Gulch  
Site: S36-T4S-R96W (B36 496)  
Well: 8501B-36 B36 496  
Wellbore: DD  
Design: Plan #1



SECTION DETAILS										
Sec	MD	Inc	Azi	TVD	+N/-S	+E/-W	DLeg	TFace	VSec	Target
1	0.0	0.00	0.00	0.0	0.0	0.0	0.00	0.00	0.0	
2	300.0	0.00	0.00	300.0	0.0	0.0	0.00	0.00	0.0	
3	524.9	6.75	73.36	524.4	3.8	12.7	3.00	73.36	13.2	
4	8304.0	6.75	73.36	8249.6	265.6	888.3	0.00	0.00	927.2	
5	8528.9	0.00	0.00	8474.0	269.4	901.0	3.00	180.00	940.4	8501B-36 B36 496 TGT
6	12188.9	0.00	0.00	12134.0	269.4	901.0	0.00	0.00	940.4	8501B-36 B36 496 BHL
7	13438.9	0.00	0.00	13384.0	269.4	901.0	0.00	0.00	940.4	
8	13688.9	0.00	0.00	13634.0	269.4	901.0	0.00	0.00	940.4	



Bottom Hole Location  
8501B-36 B36 496  
Lat : 39 39 53.95N  
Long : 108 6 36.40 W



Azimuths to True North  
Magnetic North: 10.64°

Magnetic Field  
Strength: 52515.9nT  
Dip Angle: 65.91°  
Date: 8/26/2009  
Model: IGRF200510

#### FORMATION TOP DETAILS

TVDPath	MDPath	Formation
1734.0	1743.0	Mahog Bench
5334.0	5368.1	Was G
8434.0	8488.9	WF
8474.0	8528.9	TOG
9134.0	9188.9	Price_GR
11534.0	11588.9	Paludal
12134.0	12188.9	Rollins
12464.0	12518.9	Cozzette
12654.0	12708.9	Corcoran
12934.0	12988.9	Sego
13134.0	13188.9	Lower Sego

DESIGN DETAILS: Plan #1  
95XXX; BH  
KBE @ 8374.0ft (Original Well Elev)

Target	Azimuth	Origin	N/S	E/W	From TVD
8501B-36 B36 496 BHL	73.36	Slot	0.0	0.0	0.0

# Directional Plus

## Planning Report

<b>Database:</b>	EDM 2003.21 US Multi User Db	<b>Local Co-ordinate Reference:</b>	Well 8501B-36 B36 496
<b>Company:</b>	EnCana Oil & Gas (USA) Inc	<b>TVD Reference:</b>	KBE @ 8374.0ft (Original Well Elev)
<b>Project:</b>	Story Gulch	<b>MD Reference:</b>	KBE @ 8374.0ft (Original Well Elev)
<b>Site:</b>	S36-T4S-R96W (B36 496)	<b>North Reference:</b>	True
<b>Well:</b>	8501B-36 B36 496	<b>Survey Calculation Method:</b>	Minimum Curvature
<b>Wellbore:</b>	DD		
<b>Design:</b>	Plan #1		

<b>Project</b>	Story Gulch		
<b>Map System:</b>	US State Plane 1983	<b>System Datum:</b>	Mean Sea Level
<b>Geo Datum:</b>	North American Datum 1983		
<b>Map Zone:</b>	Colorado Central Zone		

Site		S36-T4S-R96W (B36 496)			
Site Position:		Northing:	1,677,422.27 ft	Latitude:	39° 39' 51.36 N
From:	Lat/Long	Easting:	2,264,394.80 ft	Longitude:	108° 6' 47.88 W
Position Uncertainty:	0.0 ft	Slot Radius:	in	Grid Convergence:	-1.65 °

Well	8501B-36 B36 496					
Well Position	+N/-S	0.0 ft	Northing:	1,677,415.08 ft	Latitude:	39° 39' 51.29 N
	+E/-W	0.0 ft	Easting:	2,264,391.15 ft	Longitude:	108° 6' 47.92 W
Position Uncertainty		0.0 ft	Wellhead Elevation:	ft	Ground Level:	8,352.0 ft

<b>Wellbore</b>	DD				
<b>Magnetics</b>	<b>Model Name</b>	<b>Sample Date</b>	<b>Declination</b>	<b>Dip Angle</b>	<b>Field Strength</b>
			(°)	(°)	(nT)
	IGRF200510	8/26/2009	10.64	65.92	52,516

<b>Design</b>	Plan #1				
<b>Audit Notes:</b>					
<b>Version:</b>	<b>Phase:</b>	PLAN	<b>Tie On Depth:</b>	0.0	
<b>Vertical Section:</b>	<b>Depth From (TVD)</b>	<b>+N/-S</b>	<b>+E/-W</b>	<b>Direction</b>	
	(ft)	(ft)	(ft)	(°)	
	0.0	0.0	0.0	73.36	

<b>Plan Sections</b>										
Measured Depth (ft)	Inclination (°)	Azimuth (°)	Vertical Depth (ft)	+N/-S (ft)	+E/-W (ft)	Dogleg Rate (°/100ft)	Build Rate (°/100ft)	Turn Rate (°/100ft)	TFO (°)	Target
0.0	0.00	0.00	0.0	0.0	0.0	0.00	0.00	0.00	0.00	
300.0	0.00	0.00	300.0	0.0	0.0	0.00	0.00	0.00	0.00	
524.9	6.75	73.36	524.4	3.8	12.7	3.00	3.00	0.00	73.36	
8,304.0	6.75	73.36	8,249.6	265.6	888.3	0.00	0.00	0.00	0.00	
8,528.9	0.00	0.00	8,474.0	269.4	901.0	3.00	-3.00	0.00	180.00	8501B-36 B36 496 TC
12,188.9	0.00	0.00	12,134.0	269.4	901.0	0.00	0.00	0.00	0.00	8501B-36 B36 496 BT
13,438.9	0.00	0.00	13,384.0	269.4	901.0	0.00	0.00	0.00	0.00	
13,688.9	0.00	0.00	13,634.0	269.4	901.0	0.00	0.00	0.00	0.00	

# Directional Plus

## Planning Report

<b>Database:</b>	EDM 2003.21 US Multi User Db	<b>Local Co-ordinate Reference:</b>	Well 8501B-36 B36 496
<b>Company:</b>	EnCana Oil & Gas (USA) Inc	<b>TVD Reference:</b>	KBE @ 8374.0ft (Original Well Elev)
<b>Project:</b>	Story Gulch	<b>MD Reference:</b>	KBE @ 8374.0ft (Original Well Elev)
<b>Site:</b>	S36-T4S-R96W (B36 496)	<b>North Reference:</b>	True
<b>Well:</b>	8501B-36 B36 496	<b>Survey Calculation Method:</b>	Minimum Curvature
<b>Wellbore:</b>	DD		
<b>Design:</b>	Plan #1		

### Planned Survey

Measured Depth (ft)	Inclination (°)	Azimuth (°)	Vertical Depth (ft)	+N/-S (ft)	+E/-W (ft)	Vertical Section (ft)	Dogleg Rate (°/100ft)	Build Rate (°/100ft)	Comments / Formations
0.0	0.00	0.00	0.0	0.0	0.0	0.0	0.00	0.00	
100.0	0.00	0.00	100.0	0.0	0.0	0.0	0.00	0.00	
200.0	0.00	0.00	200.0	0.0	0.0	0.0	0.00	0.00	
300.0	0.00	0.00	300.0	0.0	0.0	0.0	0.00	0.00	KOP @ 300' MD
400.0	3.00	73.36	400.0	0.7	2.5	2.6	3.00	3.00	
500.0	6.00	73.36	499.6	3.0	10.0	10.5	3.00	3.00	
524.9	6.75	73.36	524.4	3.8	12.7	13.2	3.00	3.00	EOB; Inc=6.75°
600.0	6.75	73.36	599.0	6.3	21.1	22.0	0.00	0.00	
700.0	6.75	73.36	698.3	9.7	32.4	33.8	0.00	0.00	
800.0	6.75	73.36	797.6	13.0	43.6	45.5	0.00	0.00	
900.0	6.75	73.36	896.9	16.4	54.9	57.3	0.00	0.00	
1,000.0	6.75	73.36	996.2	19.8	66.2	69.0	0.00	0.00	
1,100.0	6.75	73.36	1,095.5	23.1	77.4	80.8	0.00	0.00	
1,200.0	6.75	73.36	1,194.8	26.5	88.7	92.5	0.00	0.00	
1,300.0	6.75	73.36	1,294.1	29.9	99.9	104.3	0.00	0.00	
1,400.0	6.75	73.36	1,393.4	33.2	111.2	116.0	0.00	0.00	
1,500.0	6.75	73.36	1,492.7	36.6	122.4	127.8	0.00	0.00	
1,600.0	6.75	73.36	1,592.0	40.0	133.7	139.5	0.00	0.00	
1,700.0	6.75	73.36	1,691.3	43.3	144.9	151.3	0.00	0.00	
1,743.0	6.75	73.36	1,734.0	44.8	149.8	156.3	0.00	0.00	Mahog Bench
1,800.0	6.75	73.36	1,790.6	46.7	156.2	163.0	0.00	0.00	
1,900.0	6.75	73.36	1,890.0	50.1	167.5	174.8	0.00	0.00	
2,000.0	6.75	73.36	1,989.3	53.4	178.7	186.5	0.00	0.00	
2,100.0	6.75	73.36	2,088.6	56.8	190.0	198.3	0.00	0.00	
2,200.0	6.75	73.36	2,187.9	60.2	201.2	210.0	0.00	0.00	
2,300.0	6.75	73.36	2,287.2	63.5	212.5	221.8	0.00	0.00	
2,400.0	6.75	73.36	2,386.5	66.9	223.7	233.5	0.00	0.00	
2,500.0	6.75	73.36	2,485.8	70.3	235.0	245.3	0.00	0.00	
2,600.0	6.75	73.36	2,585.1	73.6	246.3	257.0	0.00	0.00	
2,700.0	6.75	73.36	2,684.4	77.0	257.5	268.8	0.00	0.00	
2,800.0	6.75	73.36	2,783.7	80.4	268.8	280.5	0.00	0.00	
2,900.0	6.75	73.36	2,883.0	83.7	280.0	292.3	0.00	0.00	
3,000.0	6.75	73.36	2,982.3	87.1	291.3	304.0	0.00	0.00	
3,100.0	6.75	73.36	3,081.6	90.4	302.5	315.8	0.00	0.00	
3,200.0	6.75	73.36	3,181.0	93.8	313.8	327.5	0.00	0.00	
3,300.0	6.75	73.36	3,280.3	97.2	325.1	339.3	0.00	0.00	
3,400.0	6.75	73.36	3,379.6	100.5	336.3	351.0	0.00	0.00	
3,500.0	6.75	73.36	3,478.9	103.9	347.6	362.8	0.00	0.00	
3,600.0	6.75	73.36	3,578.2	107.3	358.8	374.5	0.00	0.00	
3,700.0	6.75	73.36	3,677.5	110.6	370.1	386.3	0.00	0.00	
3,800.0	6.75	73.36	3,776.8	114.0	381.3	398.0	0.00	0.00	
3,900.0	6.75	73.36	3,876.1	117.4	392.6	409.8	0.00	0.00	
4,000.0	6.75	73.36	3,975.4	120.7	403.8	421.5	0.00	0.00	
4,100.0	6.75	73.36	4,074.7	124.1	415.1	433.3	0.00	0.00	
4,200.0	6.75	73.36	4,174.0	127.5	426.4	445.0	0.00	0.00	
4,300.0	6.75	73.36	4,273.3	130.8	437.6	456.8	0.00	0.00	
4,400.0	6.75	73.36	4,372.6	134.2	448.9	468.5	0.00	0.00	
4,500.0	6.75	73.36	4,472.0	137.6	460.1	480.3	0.00	0.00	
4,600.0	6.75	73.36	4,571.3	140.9	471.4	492.0	0.00	0.00	
4,700.0	6.75	73.36	4,670.6	144.3	482.6	503.7	0.00	0.00	
4,800.0	6.75	73.36	4,769.9	147.7	493.9	515.5	0.00	0.00	
4,900.0	6.75	73.36	4,869.2	151.0	505.2	527.2	0.00	0.00	

# Directional Plus

## Planning Report

<b>Database:</b>	EDM 2003.21 US Multi User Db	<b>Local Co-ordinate Reference:</b>	Well 8501B-36 B36 496
<b>Company:</b>	EnCana Oil & Gas (USA) Inc	<b>TVD Reference:</b>	KBE @ 8374.0ft (Original Well Elev)
<b>Project:</b>	Story Gulch	<b>MD Reference:</b>	KBE @ 8374.0ft (Original Well Elev)
<b>Site:</b>	S36-T4S-R96W (B36 496)	<b>North Reference:</b>	True
<b>Well:</b>	8501B-36 B36 496	<b>Survey Calculation Method:</b>	Minimum Curvature
<b>Wellbore:</b>	DD		
<b>Design:</b>	Plan #1		

### Planned Survey

Measured Depth (ft)	Inclination (°)	Azimuth (°)	Vertical Depth (ft)	+N/-S (ft)	+E/-W (ft)	Vertical Section (ft)	Dogleg Rate (°/100ft)	Build Rate (°/100ft)	Comments / Formations
5,000.0	6.75	73.36	4,968.5	154.4	516.4	539.0	0.00	0.00	
5,100.0	6.75	73.36	5,067.8	157.7	527.7	550.7	0.00	0.00	
5,200.0	6.75	73.36	5,167.1	161.1	538.9	562.5	0.00	0.00	
5,300.0	6.75	73.36	5,266.4	164.5	550.2	574.2	0.00	0.00	
5,368.1	6.75	73.36	5,334.0	166.8	557.8	582.2	0.00	0.00	Was G
5,400.0	6.75	73.36	5,365.7	167.8	561.4	586.0	0.00	0.00	
5,500.0	6.75	73.36	5,465.0	171.2	572.7	597.7	0.00	0.00	
5,600.0	6.75	73.36	5,564.3	174.6	584.0	609.5	0.00	0.00	
5,700.0	6.75	73.36	5,663.6	177.9	595.2	621.2	0.00	0.00	
5,800.0	6.75	73.36	5,762.9	181.3	606.5	633.0	0.00	0.00	
5,900.0	6.75	73.36	5,862.3	184.7	617.7	644.7	0.00	0.00	
6,000.0	6.75	73.36	5,961.6	188.0	629.0	656.5	0.00	0.00	
6,100.0	6.75	73.36	6,060.9	191.4	640.2	668.2	0.00	0.00	
6,200.0	6.75	73.36	6,160.2	194.8	651.5	680.0	0.00	0.00	
6,300.0	6.75	73.36	6,259.5	198.1	662.7	691.7	0.00	0.00	
6,400.0	6.75	73.36	6,358.8	201.5	674.0	703.5	0.00	0.00	
6,500.0	6.75	73.36	6,458.1	204.9	685.3	715.2	0.00	0.00	
6,600.0	6.75	73.36	6,557.4	208.2	696.5	727.0	0.00	0.00	
6,700.0	6.75	73.36	6,656.7	211.6	707.8	738.7	0.00	0.00	
6,800.0	6.75	73.36	6,756.0	215.0	719.0	750.5	0.00	0.00	
6,900.0	6.75	73.36	6,855.3	218.3	730.3	762.2	0.00	0.00	
7,000.0	6.75	73.36	6,954.6	221.7	741.5	774.0	0.00	0.00	
7,100.0	6.75	73.36	7,053.9	225.1	752.8	785.7	0.00	0.00	
7,200.0	6.75	73.36	7,153.3	228.4	764.1	797.5	0.00	0.00	
7,300.0	6.75	73.36	7,252.6	231.8	775.3	809.2	0.00	0.00	
7,400.0	6.75	73.36	7,351.9	235.1	786.6	821.0	0.00	0.00	
7,500.0	6.75	73.36	7,451.2	238.5	797.8	832.7	0.00	0.00	
7,600.0	6.75	73.36	7,550.5	241.9	809.1	844.5	0.00	0.00	
7,700.0	6.75	73.36	7,649.8	245.2	820.3	856.2	0.00	0.00	
7,800.0	6.75	73.36	7,749.1	248.6	831.6	868.0	0.00	0.00	
7,900.0	6.75	73.36	7,848.4	252.0	842.9	879.7	0.00	0.00	
8,000.0	6.75	73.36	7,947.7	255.3	854.1	891.5	0.00	0.00	
8,100.0	6.75	73.36	8,047.0	258.7	865.4	903.2	0.00	0.00	
8,200.0	6.75	73.36	8,146.3	262.1	876.6	915.0	0.00	0.00	
8,300.0	6.75	73.36	8,245.6	265.4	887.9	926.7	0.00	0.00	
8,304.0	6.75	73.36	8,249.6	265.6	888.3	927.2	0.00	0.00	Start Drop -3.00
8,400.0	3.87	73.36	8,345.2	268.1	896.8	936.1	3.00	-3.00	
8,488.9	1.20	73.36	8,434.0	269.2	900.6	940.0	3.00	-3.00	WF
8,500.0	0.87	73.36	8,445.1	269.3	900.8	940.2	3.00	-3.00	
8,528.9	0.00	0.00	8,474.0	269.4	901.0	940.4	3.00	-3.00	EOD; Inc=0° - TOG - 8501B-36 B36 496 TGT
8,600.0	0.00	0.00	8,545.1	269.4	901.0	940.4	0.00	0.00	
8,700.0	0.00	0.00	8,645.1	269.4	901.0	940.4	0.00	0.00	
8,800.0	0.00	0.00	8,745.1	269.4	901.0	940.4	0.00	0.00	
8,900.0	0.00	0.00	8,845.1	269.4	901.0	940.4	0.00	0.00	
9,000.0	0.00	0.00	8,945.1	269.4	901.0	940.4	0.00	0.00	
9,100.0	0.00	0.00	9,045.1	269.4	901.0	940.4	0.00	0.00	
9,188.9	0.00	0.00	9,134.0	269.4	901.0	940.4	0.00	0.00	Price_GR
9,200.0	0.00	0.00	9,145.1	269.4	901.0	940.4	0.00	0.00	
9,300.0	0.00	0.00	9,245.1	269.4	901.0	940.4	0.00	0.00	
9,400.0	0.00	0.00	9,345.1	269.4	901.0	940.4	0.00	0.00	
9,500.0	0.00	0.00	9,445.1	269.4	901.0	940.4	0.00	0.00	
9,600.0	0.00	0.00	9,545.1	269.4	901.0	940.4	0.00	0.00	

# Directional Plus

## Planning Report

<b>Database:</b>	EDM 2003.21 US Multi User Db	<b>Local Co-ordinate Reference:</b>	Well 8501B-36 B36 496
<b>Company:</b>	EnCana Oil & Gas (USA) Inc	<b>TVD Reference:</b>	KBE @ 8374.0ft (Original Well Elev)
<b>Project:</b>	Story Gulch	<b>MD Reference:</b>	KBE @ 8374.0ft (Original Well Elev)
<b>Site:</b>	S36-T4S-R96W (B36 496)	<b>North Reference:</b>	True
<b>Well:</b>	8501B-36 B36 496	<b>Survey Calculation Method:</b>	Minimum Curvature
<b>Wellbore:</b>	DD		
<b>Design:</b>	Plan #1		

Planned Survey									
Measured Depth (ft)	Inclination (°)	Azimuth (°)	Vertical Depth (ft)	+N/-S (ft)	+E/-W (ft)	Vertical Section (ft)	Dogleg Rate (°/100ft)	Build Rate (°/100ft)	Comments / Formations
9,700.0	0.00	0.00	9,645.1	269.4	901.0	940.4	0.00	0.00	
9,800.0	0.00	0.00	9,745.1	269.4	901.0	940.4	0.00	0.00	
9,900.0	0.00	0.00	9,845.1	269.4	901.0	940.4	0.00	0.00	
10,000.0	0.00	0.00	9,945.1	269.4	901.0	940.4	0.00	0.00	
10,100.0	0.00	0.00	10,045.1	269.4	901.0	940.4	0.00	0.00	
10,200.0	0.00	0.00	10,145.1	269.4	901.0	940.4	0.00	0.00	
10,300.0	0.00	0.00	10,245.1	269.4	901.0	940.4	0.00	0.00	
10,400.0	0.00	0.00	10,345.1	269.4	901.0	940.4	0.00	0.00	
10,500.0	0.00	0.00	10,445.1	269.4	901.0	940.4	0.00	0.00	
10,600.0	0.00	0.00	10,545.1	269.4	901.0	940.4	0.00	0.00	
10,700.0	0.00	0.00	10,645.1	269.4	901.0	940.4	0.00	0.00	
10,800.0	0.00	0.00	10,745.1	269.4	901.0	940.4	0.00	0.00	
10,900.0	0.00	0.00	10,845.1	269.4	901.0	940.4	0.00	0.00	
11,000.0	0.00	0.00	10,945.1	269.4	901.0	940.4	0.00	0.00	
11,100.0	0.00	0.00	11,045.1	269.4	901.0	940.4	0.00	0.00	
11,200.0	0.00	0.00	11,145.1	269.4	901.0	940.4	0.00	0.00	
11,300.0	0.00	0.00	11,245.1	269.4	901.0	940.4	0.00	0.00	
11,400.0	0.00	0.00	11,345.1	269.4	901.0	940.4	0.00	0.00	
11,500.0	0.00	0.00	11,445.1	269.4	901.0	940.4	0.00	0.00	
11,588.9	0.00	0.00	11,534.0	269.4	901.0	940.4	0.00	0.00	Paludal
11,600.0	0.00	0.00	11,545.1	269.4	901.0	940.4	0.00	0.00	
11,700.0	0.00	0.00	11,645.1	269.4	901.0	940.4	0.00	0.00	
11,800.0	0.00	0.00	11,745.1	269.4	901.0	940.4	0.00	0.00	
11,900.0	0.00	0.00	11,845.1	269.4	901.0	940.4	0.00	0.00	
12,000.0	0.00	0.00	11,945.1	269.4	901.0	940.4	0.00	0.00	
12,100.0	0.00	0.00	12,045.1	269.4	901.0	940.4	0.00	0.00	
12,188.9	0.00	0.00	12,134.0	269.4	901.0	940.4	0.00	0.00	Rollins - 8501B-36 B36 496 BHL
12,200.0	0.00	0.00	12,145.1	269.4	901.0	940.4	0.00	0.00	
12,300.0	0.00	0.00	12,245.1	269.4	901.0	940.4	0.00	0.00	
12,400.0	0.00	0.00	12,345.1	269.4	901.0	940.4	0.00	0.00	
12,500.0	0.00	0.00	12,445.1	269.4	901.0	940.4	0.00	0.00	
12,518.9	0.00	0.00	12,464.0	269.4	901.0	940.4	0.00	0.00	Cozzette
12,600.0	0.00	0.00	12,545.1	269.4	901.0	940.4	0.00	0.00	
12,700.0	0.00	0.00	12,645.1	269.4	901.0	940.4	0.00	0.00	
12,708.9	0.00	0.00	12,654.0	269.4	901.0	940.4	0.00	0.00	Corcoran
12,800.0	0.00	0.00	12,745.1	269.4	901.0	940.4	0.00	0.00	
12,900.0	0.00	0.00	12,845.1	269.4	901.0	940.4	0.00	0.00	
12,988.9	0.00	0.00	12,934.0	269.4	901.0	940.4	0.00	0.00	Sego
13,000.0	0.00	0.00	12,945.1	269.4	901.0	940.4	0.00	0.00	
13,100.0	0.00	0.00	13,045.1	269.4	901.0	940.4	0.00	0.00	
13,188.9	0.00	0.00	13,134.0	269.4	901.0	940.4	0.00	0.00	Lower Sego
13,200.0	0.00	0.00	13,145.1	269.4	901.0	940.4	0.00	0.00	
13,300.0	0.00	0.00	13,245.1	269.4	901.0	940.4	0.00	0.00	
13,400.0	0.00	0.00	13,345.1	269.4	901.0	940.4	0.00	0.00	
13,438.9	0.00	0.00	13,384.0	269.4	901.0	940.4	0.00	0.00	Driller's TD @ 13438.9' MD
13,500.0	0.00	0.00	13,445.1	269.4	901.0	940.4	0.00	0.00	
13,600.0	0.00	0.00	13,545.1	269.4	901.0	940.4	0.00	0.00	
13,688.9	0.00	0.00	13,634.0	269.4	901.0	940.4	0.00	0.00	Permit TD @ 13688.9' MD

# Directional Plus

## Planning Report

<b>Database:</b>	EDM 2003.21 US Multi User Db	<b>Local Co-ordinate Reference:</b>	Well 8501B-36 B36 496
<b>Company:</b>	EnCana Oil & Gas (USA) Inc	<b>TVD Reference:</b>	KBE @ 8374.0ft (Original Well Elev)
<b>Project:</b>	Story Gulch	<b>MD Reference:</b>	KBE @ 8374.0ft (Original Well Elev)
<b>Site:</b>	S36-T4S-R96W (B36 496)	<b>North Reference:</b>	True
<b>Well:</b>	8501B-36 B36 496	<b>Survey Calculation Method:</b>	Minimum Curvature
<b>Wellbore:</b>	DD		
<b>Design:</b>	Plan #1		

Targets									
Target Name									
- hit/miss target	Dip Angle	Dip Dir.	TVD	+N/-S	+E/-W	Northing	Easting	Latitude	Longitude
- Shape	(°)	(°)	(ft)	(ft)	(ft)	(ft)	(ft)		
8501B-36 B36 496 TGT	0.00	0.00	8,474.0	269.4	901.0	1,677,658.41	2,265,299.52	39° 39' 53.95 N	108° 6' 36.40 W
- plan hits target center									
- Point									
8501B-36 B36 496 BHL	0.00	0.00	12,134.0	269.4	901.0	1,677,658.41	2,265,299.52	39° 39' 53.95 N	108° 6' 36.40 W
- plan hits target center									
- Rectangle (sides W30.0 H50.0 D0.0)									

Formations						
Measured Depth	Vertical Depth	Name	Lithology	Dip	Dip Direction	
(ft)	(ft)			(°)	(°)	
1,743.0	1,734.0	Mahog Bench		0.00		
5,368.1	5,334.0	Was G		0.00		
8,488.9	8,434.0	WF		0.00		
8,528.9	8,474.0	TOG		0.00		
9,188.9	9,134.0	Price_GR		0.00		
11,588.9	11,534.0	Paludal		0.00		
12,188.9	12,134.0	Rollins		0.00		
12,518.9	12,464.0	Cozzette		0.00		
12,708.9	12,654.0	Corcoran		0.00		
12,988.9	12,934.0	Sego		0.00		
13,188.9	13,134.0	Lower Sego		0.00		

Plan Annotations				
Measured Depth	Vertical Depth	Local Coordinates		Comment
(ft)	(ft)	+N/-S (ft)	+E/-W (ft)	
300.0	300.0	0.0	0.0	KOP @ 300' MD
524.9	524.4	3.8	12.7	EOB; Inc=6.75°
8,304.0	8,249.6	265.6	888.3	Start Drop -3.00
8,528.9	8,474.0	269.4	901.0	EOD; Inc=0°
13,438.9	13,384.0	269.4	901.0	Driller's TD @ 13438.9' MD
13,688.9	13,634.0	269.4	901.0	Permit TD @ 13688.9' MD