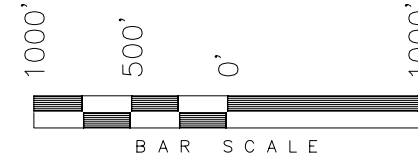


T7S, R92W, 6th P.M.

ENCANA OIL & GAS (USA) INC

WELL LOCATION, SHIDELER 36-9D (C31E),
 LOCATED AS SHOWN IN THE NE 1/4 NW
 1/4 OF SECTION 31, T7S, R92W, 6th P.M.
 GARFIELD COUNTY, COLORADO.



NOTES:

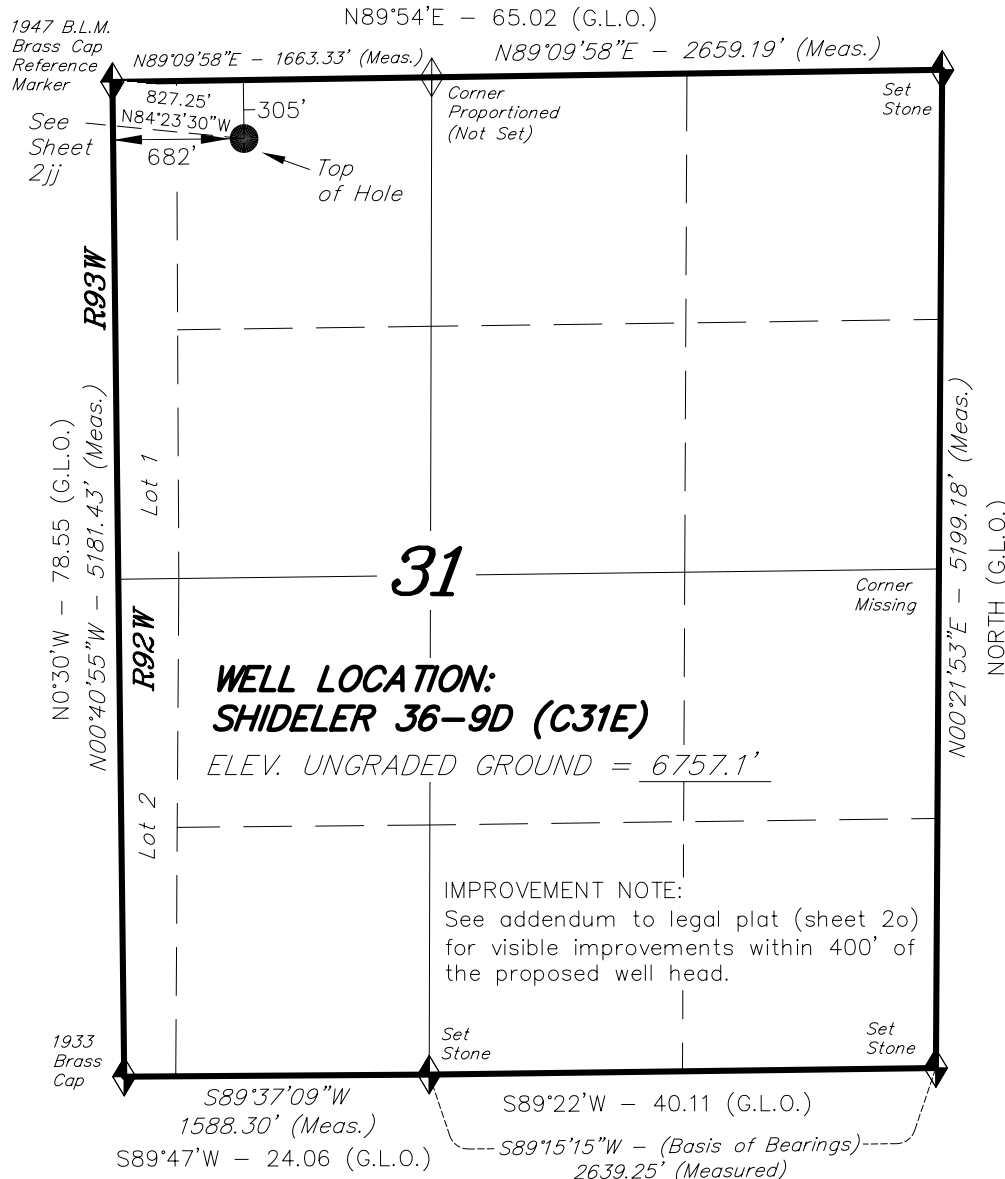
1. Well footages are measured at right angles to the Section Lines.
2. Bearings are based on Global Positioning Satellite observations.
3. G.P.S. Operator: C.D. SLAUGH, (PDOP) = 2.4

THIS IS TO CERTIFY THAT THE ABOVE PLAT WAS PREPARED FROM FIELD NOTES OF A SURVEY MADE BY ME OR UNDER MY SUPERVISION. THE LOCATION HAS BEEN STAKED ON THE GROUND AS SHOWN ON THE PLAT, AND THAT THE SAME IS TRUE AND CORRECT TO THE BEST OF MY KNOWLEDGE AND BELIEF.

Stacy C. Stewart
 # 30125
 REGISTERED LAND SURVEYOR
 REGISTRATION No. 30125
 STATE OF COLORADO

TRI STATE LAND SURVEYING & CONSULTING
 180 NORTH VERNAL AVE. - VERNAL, UTAH 84078
 (435) 781-2501

DATE SURVEYED: 05-13-09	SURVEYED BY: C.D.S.	SHEET 2j OF 11
DATE DRAWN: 06-08-09	DRAWN BY: F.T.M.	
REVISED:	SCALE: 1" = 1000'	



NAD 83 (SURFACE LOCATION)	
LATITUDE =	39°24'32.93" (39.409147)
LONGITUDE =	107°42'42.14" (107.711706)

◆ = SECTION CORNERS LOCATED

Basis of elevation is the Rifle 2 Triangulation Station. 39°31'53.80" N Lat. & 107°47'07.78" W Long. (NAD 83). Elevation = 5323.1' (NAVD88).

T7S, R93W, 6th P.M.

◆ = SECTION CORNERS LOCATED

Basis of elevation is the Rifle 2 Triangulation Station. 39°31'53.80" N Lat. & 107°47'07.78" W Long. (NAD 83). Elevation = 5323.1' (NAVD88).

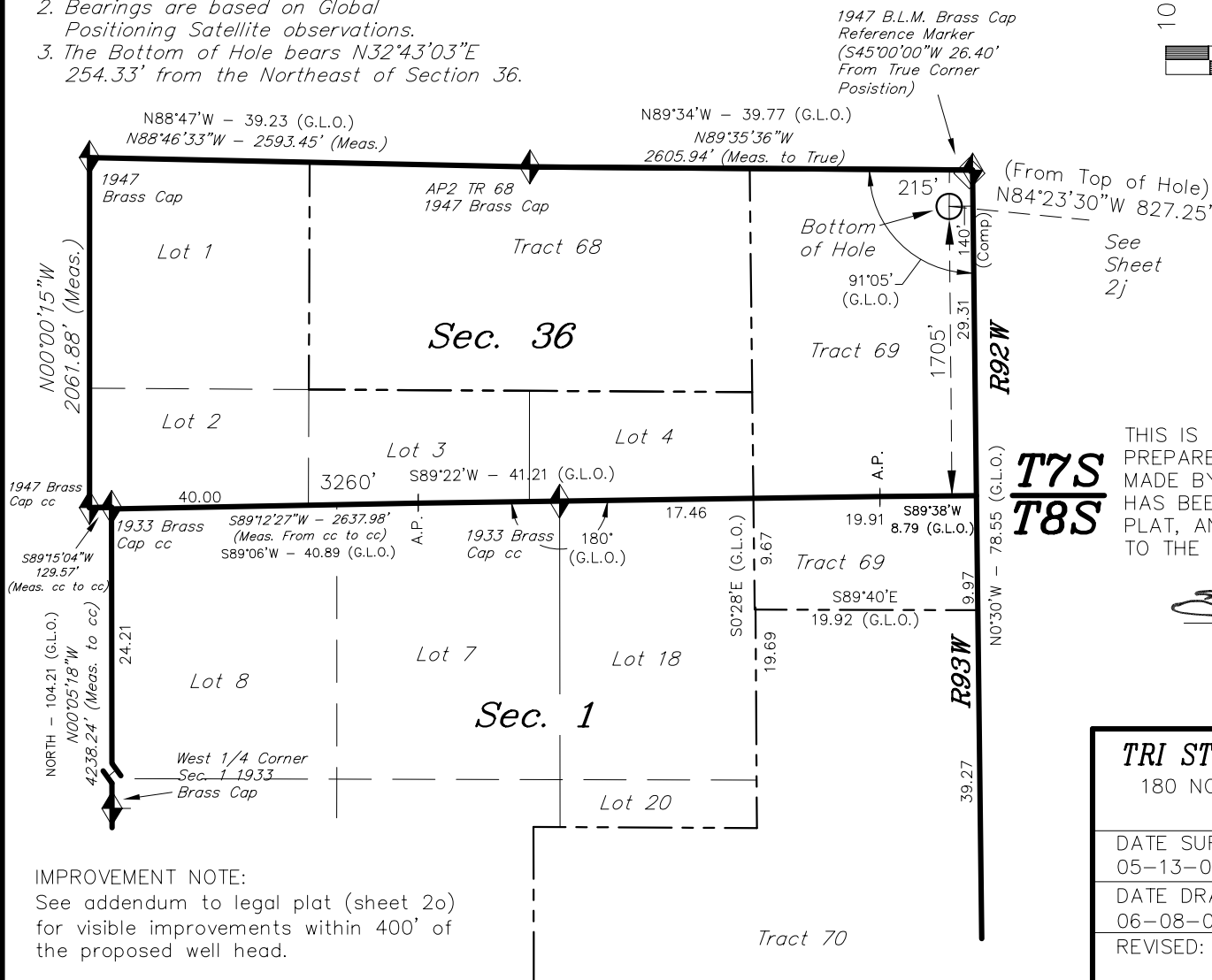
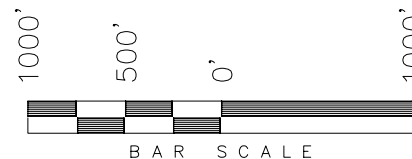
TARGET BOTTOM HOLE: SHIDELER 36-9D (C31E)

ENCANA OIL & GAS (USA) INC

TARGET BOTTOM HOLE, SHIDELER 36-9D (C31E), LOCATED AS SHOWN IN TRACT 69 (NE 1/4 NE 1/4) IN SECTION 36, T7S, R93W, 6th P.M. GARFIELD COUNTY, COLORADO.

NOTES:

1. Well footages are measured at right angles to the Section Lines.
2. Bearings are based on Global Positioning Satellite observations.
3. The Bottom of Hole bears N32°43'03"E 254.33' from the Northeast of Section 36.



THIS IS TO CERTIFY THAT THE ABOVE PLAT WAS PREPARED FROM FIELD NOTES OF SURVEYS MADE BY ME OR UNDER MY SUPERVISION. THE LOCATION HAS BEEN STAKED ON THE GROUND AS SHOWN ON THE PLAT, AND THAT THE SAME ARE TRUE AND CORRECT TO THE BEST OF MY KNOWLEDGE AND BELIEF.

Stan C. D. S.
30125
REGISTERED LAND SURVEYOR
REGISTRATION NO. 30125
STATE OF COLORADO

TRI STATE LAND SURVEYING & CONSULTING
180 NORTH VERNAL AVE. - VERNAL, UTAH 84078
(435) 781-2501

IMPROVEMENT NOTE:
See addendum to legal plat (sheet 2o) for visible improvements within 400' of the proposed well head.

DATE SURVEYED: 05-13-09	SURVEYED BY: C.D.S.	SHEET
DATE DRAWN: 06-08-09	DRAWN BY: F.T.M.	2jj
REVISED:	SCALE: 1" = 1000'	OF 11