

# T. 6 S., R. 92 W., 6TH P.M.

**VALLEY FARMS PAD E  
GARFIELD COUNTY,  
COLORADO**

**WELL E7**

**NAD 83**

**LATITUDE**

39°31'44.8935" N

(39.52913708 N)

**LONGITUDE**

107°38'47.75533" W

(107.64659870 W)

**UTM 13 NORTH**

**(METERS)**

**NORTHING**

4378843.298

**EASTING**

272527.568

**BOTTOM HOLE**

**NAD 83**

**LATITUDE**

39°31'55.00693" N

(39.531946370 N)

**LONGITUDE**

107°38'40.42959" W

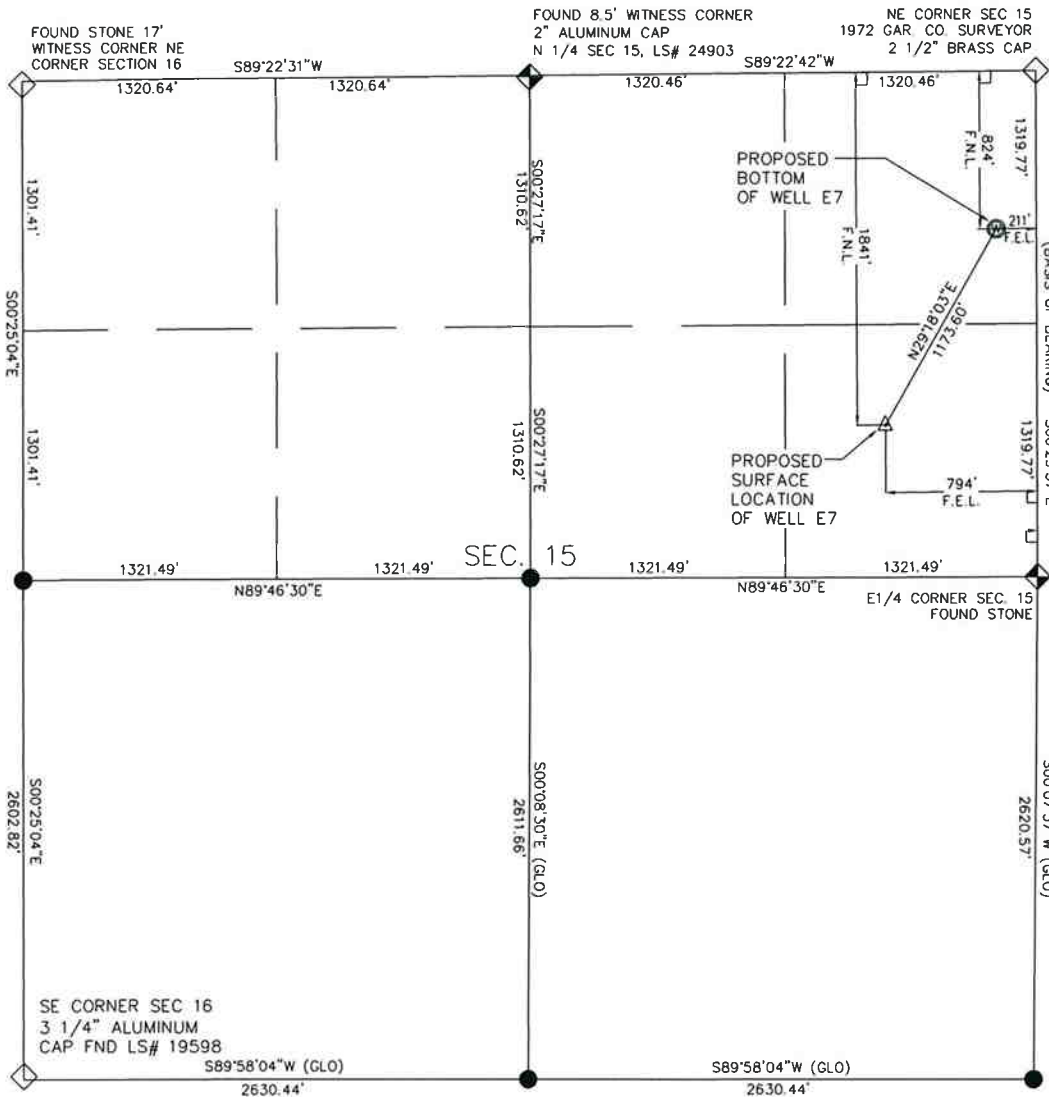
(107.644563777 W)

**LEGEND**

- △ FIELD SURVEYED WELL LOCATION
- ◇ FIELD SURVEYED SECTION CORNER
- ◆ FIELD SURVEYED QUARTER CORNER
- CALCULATED SECTION CORNER LOCATION
- ⊙ PROPOSED BOTTOM OF WELL LOCATION

## NOTES:

- 1) ELEVATION BASED ON NAVD 1988.
- 2) LATITUDES AND LONGITUDES ARE BASED ON NAD 83 NGS POINTS "ANDERS M", "TAMBURELLO" AND "WDP 5".
- 3) WELL MEASURED 90° FROM SECTION LINES.
- 4) SURFACE USE: IRRIGATED RANGELAND
- 5) EXISTING GROUND ELEVATION: 5604.24'
- 6) PROPOSED PAD ELEVATION: 5604.88'
- 7) DATE OF SURVEY: JUNE 28, 2008.
- 8) DATE OF DRAFTING: SEPTEMBER 23, 2008.
- 9) DISTANCE TO NEAREST PUBLIC ROAD: 400' (MINEOTA ESTATES ROAD)
- 10) BASIS OF BEARINGS WERE DETERMINED BY GPS OBSERVATION YIELDING A BEARING OF S00°29'57"E BETWEEN THE NORTHEAST CORNER OF SECTION 15 BEING A 2 1/2" BRASS CAP, GAR. CO. SURVEYOR, 1972, FOUND IN PLACE, AND THE EAST QUARTER CORNER OF SECTION 15 BEING A STONE MARKER, IN PLACE. (AS SHOWN ABOVE)
- 11) PDOP = 1.0



## SURVEYOR'S STATEMENT

I, FRANK W. HARRINGTON, DO HEREBY STATE THAT THIS SURVEY WAS PREPARED BY HIGH COUNTRY ENGINEERING, INC. FOR ANTERO RESOURCES, THAT SAID SURVEY WAS PREPARED BY ME OR UNDER MY SUPERVISION AND RESPONSIBLE CHARGE AND THAT IT IS TRUE AND CORRECT TO THE BEST OF MY BELIEF AND KNOWLEDGE.

BY:   
FRANK W. HARRINGTON, L.S. NO. 19598



GRAPHIC SCALE



( IN FEET )  
1 inch = 1000 ft

**HIGH COUNTRY ENGINEERING, INC.**



1517 BLAKE AVENUE, STE 101  
GLENWOOD SPRINGS, CO 81601  
PHONE (970) 945-8676 - FAX (970) 945-2555  
14 INVERNESS DRIVE EAST, STE F-120  
ENGLEWOOD, CO 80112  
PHONE (303) 925-0544 - FAX (303) 925-0547

WWW.HCENG.COM

<b>DRAWN BY:</b> RPK	<b>SCALE:</b> 1" = 1000'
<b>CHECKED BY:</b> FWH	<b>PROJECT NO:</b> 2051034
<b>DATE:</b> 9/28/09	<b>PAGE:</b> 2 OF 11
<b>FILE:</b> PAD E PACKET WELL E7	

<b>WELL LOCATION PLAT PREPARED FOR:</b>	 <b>ANTERO RESOURCES</b>
<b>SE 1/4 OF THE NE 1/4 OF SECTION 15 T.6S., R. 92 W. OF THE 6TH P.M. GARFIELD COUNTY, COLORADO</b>	