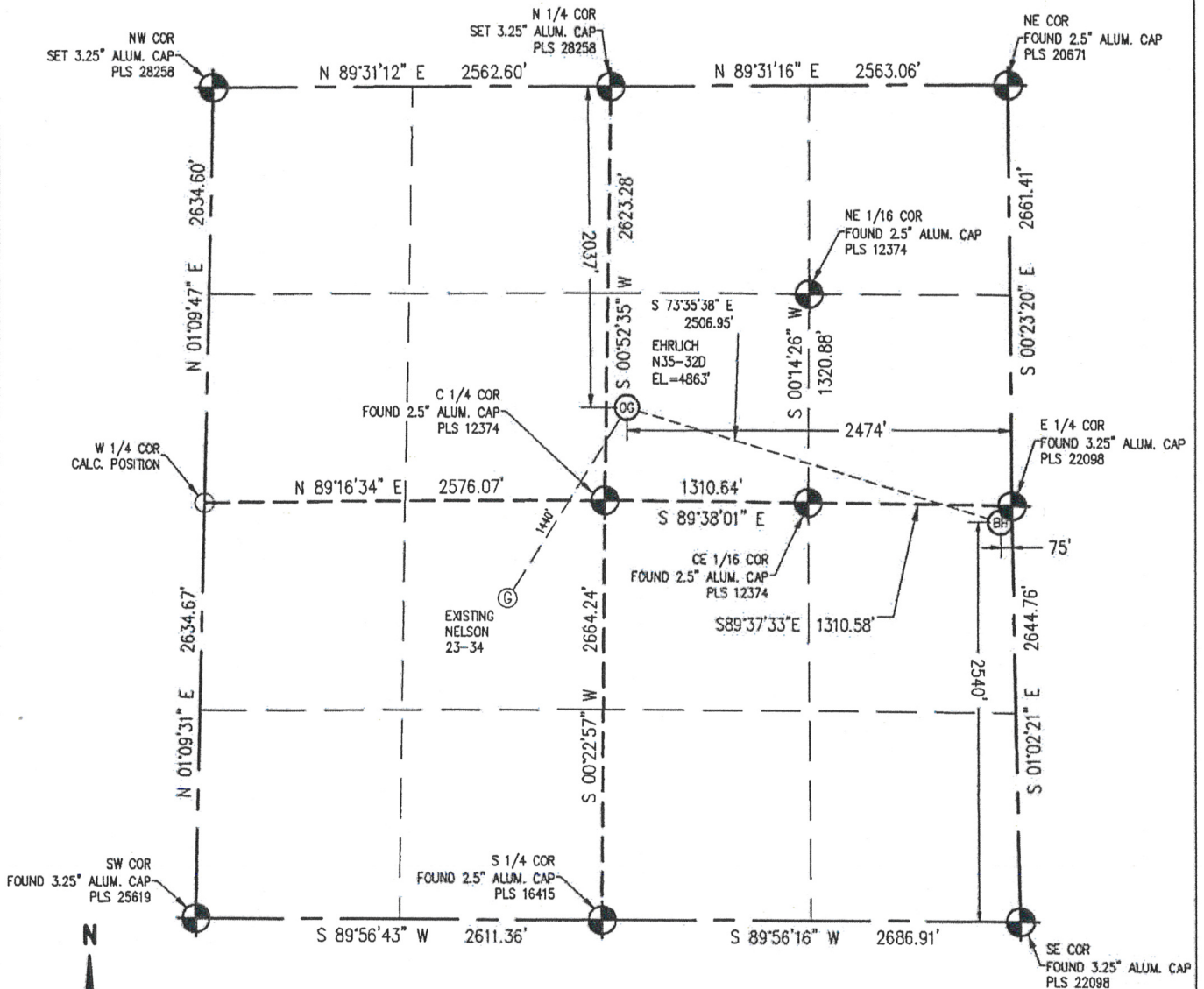


Baseline Engineering Corp. 710 11th Avenue Suite 105 Greeley, Colorado 80631

WELL LOCATION CERTIFICATE

THIS MAP DOES NOT REPRESENT A BOUNDARY SURVEY

SECTION 34
TOWNSHIP 5 NORTH
RANGE 67 WEST



IN ACCORDANCE WITH A REQUEST FROM JOE MARTIN - NOBLE ENERGY INC., BASELINE ENGINEERING CORP. HAS DETERMINED THE LOCATION OF THE EHRLICH N35-320 TO BE 2037' FNL, 2474' FEL, AS MEASURED AT NINETY (90) DEGREES FROM THE SECTION LINE OF SECTION 34, TOWNSHIP 5 NORTH, RANGE 67 WEST AND THE BOTTOM HOLE LOCATION TO BE 2540' FSL AND 75' FEL OF SECTION 34, TOWNSHIP 5 NORTH, RANGE 67 WEST, 6TH PRINCIPAL MERIDIAN, WELD COUNTY, COLORADO.

I HEREBY CERTIFY THAT THIS WELL LOCATION CERTIFICATE WAS PREPARED BY ME, OR UNDER MY DIRECT SUPERVISION, THAT THE FIELD WORK WAS COMPLETED ON 02/06/2009, THAT IT IS NOT A LAND SURVEY PLAT OR AN IMPROVEMENT SURVEY PLAT, AND THAT IT IS NOT TO BE RELIED UPON FOR ESTABLISHMENT OF FENCE, BUILDING, OR OTHER FUTURE IMPROVEMENT LINES.

NOTES:

- 1) LAT/LONG SHOWN ARE BASED ON A GPS OBSERVATION (NAD83).
- 2) BEARINGS SHOWN ARE GRID BEARINGS OF THE COLORADO STATE PLANE COORDINATE SYSTEM, NORTH ZONE, NORTH AMERICAN DATUM 1983/2007.
- 3) GROUND ELEVATIONS ARE BASED ON A GPS OBSERVATION (NAVD 88 DATUM).
- 4) ALL DISTANCES SHOWN ARE FIELD MEASURED UNLESS OTHERWISE NOTED.
- 5) THE NEAREST EXISTING WELL IS: NELSON 23-34 1440' SOUTHWEST
- 6) IMPROVEMENTS: SEE VISIBLE IMPROVEMENTS EXHIBIT FOR ALL VISIBLE IMPROVEMENTS WITHIN 400' OF WELL HEAD.
- 7) SURFACE USE: HAY FIELD.

NOTICE: According to Colorado law you MUST commence any legal action based upon any defect in this W.L.C. within three years after you first discover such defect. In no event may any action based upon any defect in this W.L.C. be commenced more than ten years from this said date of the certification shown hereon.

LATITUDE & LONGITUDE (NAD 83 SURFACE HOLE):

LATITUDE: 40.357831° N
LONGITUDE: 104.878661° W
PDOP: 1.4
1/4, 1/4 SW 1/4 NE 1/4
NEAREST PROPERTY LINE: 237' N

BOTTOM HOLE:
LATITUDE: 40.355842° N
LONGITUDE: 104.870053° W

LEGEND

- ALLOTMENT MONUMENT AS DESCRIBED
- CALCULATED SURVEY MONUMENT POSITION
- CALCULATED DIMENSION

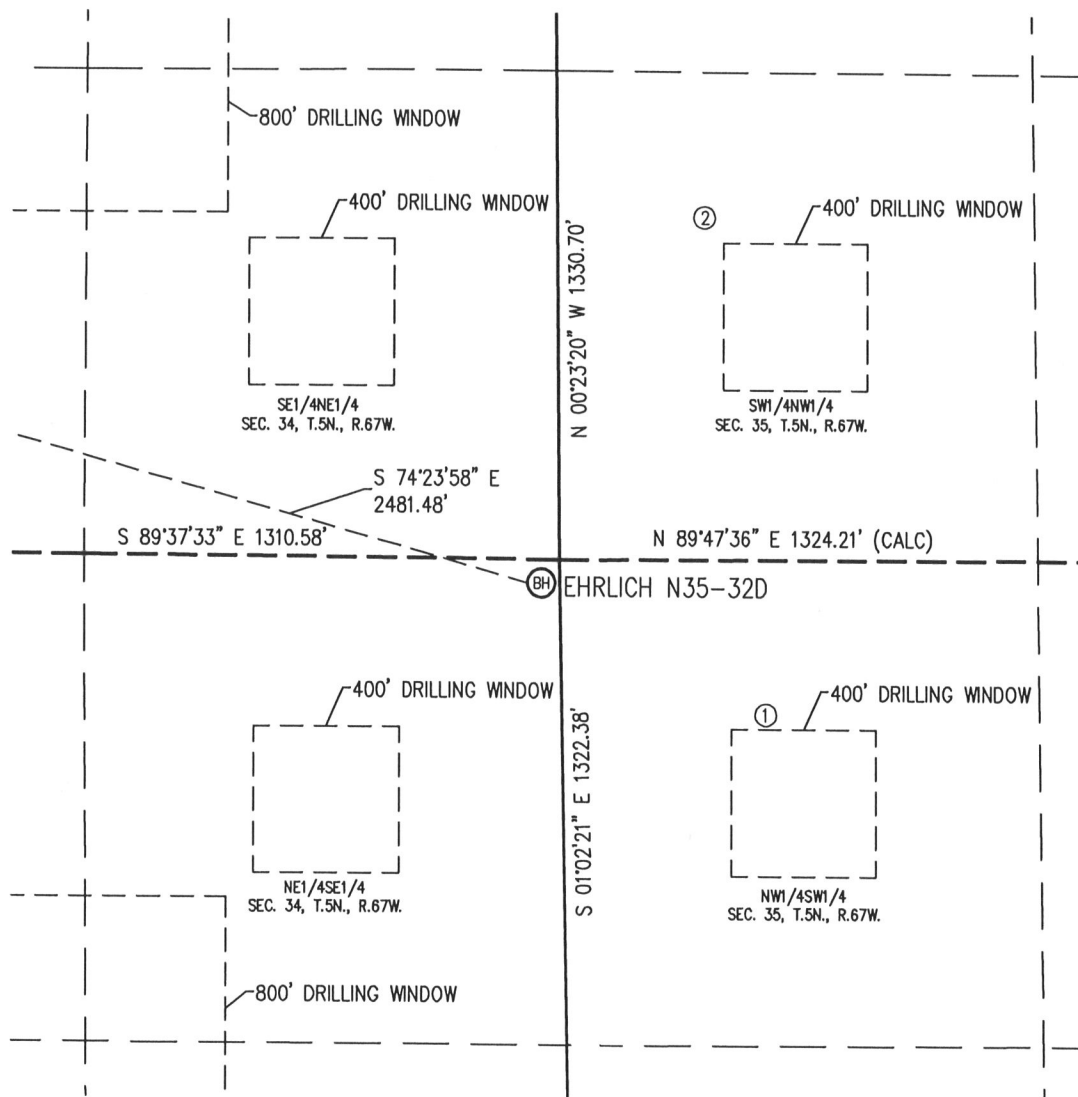


John C. Barickman
Professional Land Surveyor Registration No. 28258
State of Colorado
FOR AND ON BEHALF OF BASELINE ENGINEERING CORP.

Completed 7/20/2009
JOB # NOB5N67W34-05

SITE SKETCH

SECTION 34 & 35
TOWNSHIP 5 NORTH
RANGE 67 WEST



①
SUSAN 1
NW/SW
ELEV: 4871'
608' FWL
2158' FSL
LAT: 40.354787° N
LONG: 104.867587° W
PDOP 1.1

②
SCHNEIDER 12-35
SW/NW
ELEV: 4914'
457' FWL
1791' FNL
LAT: 40.358497° N
LONG: 104.868149° W
PDOP 2.3

NOTES:

- 1) THIS SKETCH DOES NOT REPRESENT A BOUNDARY SURVEY.
- 2) THE DATUM FOR THE LATITUDES AND LONGITUDES ON THIS SKETCH IS NAD83.

