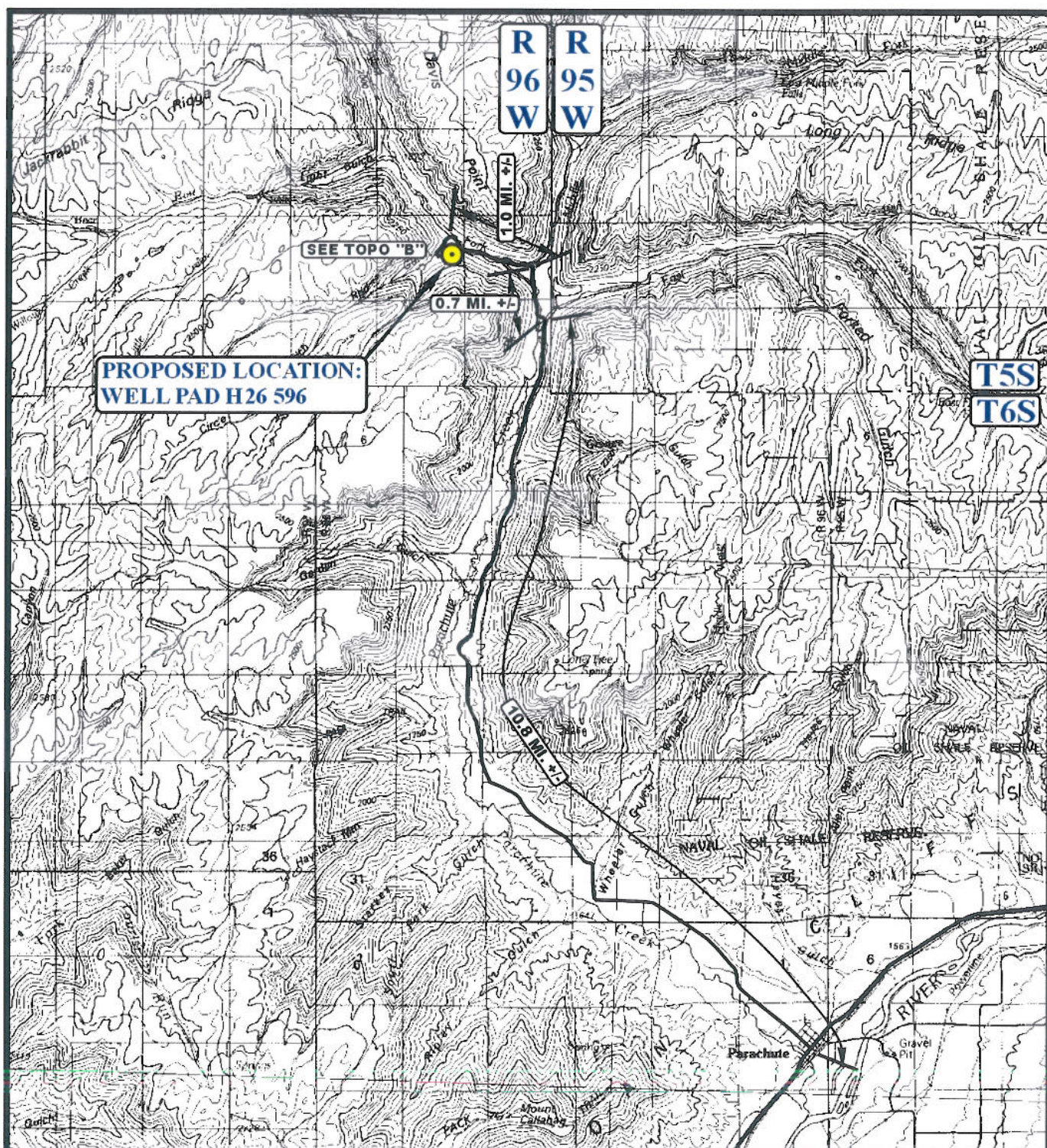


ACCESS ROAD MAP



LEGEND:

- 
- PROPOSED LOCATION

EnCana OIL & GAS (USA) INC.

WELL PAD H26 596

SECTION 26, T5S, R96W, 6th P.M.

SE 1/4 NE 1/4

SHEET 8 OF 11



Utah Engineering & Land Surveying
85 South 200 East Vernal, Utah 84078
(435) 789-1017 * FAX (435) 789-1813

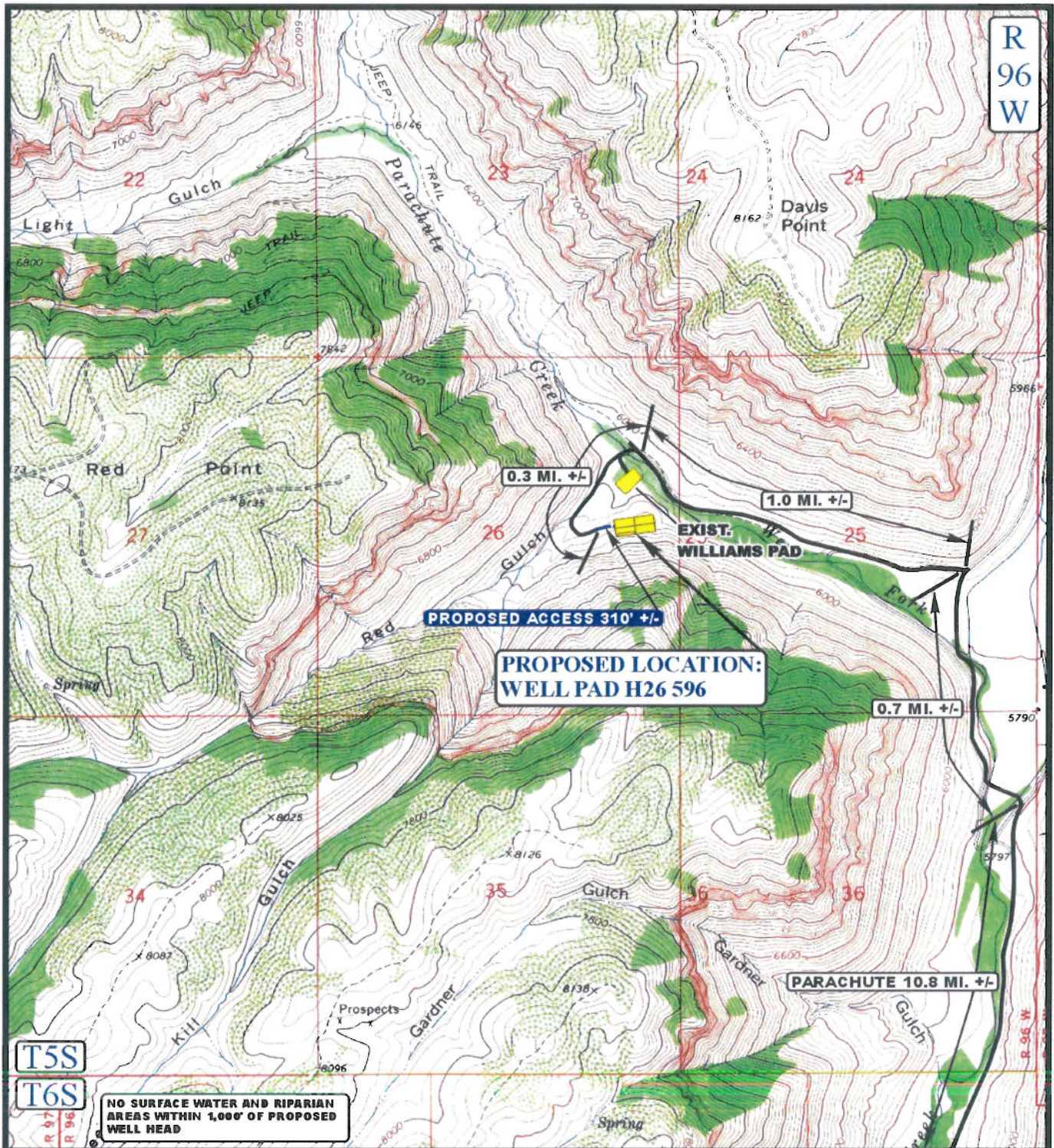
TOPOGRAPHIC
MAP

12 19 08
MONTH DAY YEAR

SCALE: 1:100,000	DRAWN BY: Z.L.	REVISED: 03-30-09
------------------	----------------	-------------------



ACCESS ROAD MAP



LEGEND:

PROPOSED ACCESS ROAD
 EXISTING ROAD

EnCana OIL & GAS (USA) INC.

WELL PAD H26 596

SECTION 26, T5S, R96W, 6th P.M.

SE 1/4 NE 1/4

SHEET 9 OF 11



Uintah Engineering & Land Surveying
 85 South 200 East Vernal, Utah 84078
 (435) 789-1017 * FAX (435) 789-1813



TOPOGRAPHIC
MAP

12 MONTH
 19 DAY
 08 YEAR

SCALE: 1" = 2000'

DRAWN BY: Z.L.

REVISED: 03-30-09

