

Steil Surveying Services, LLC

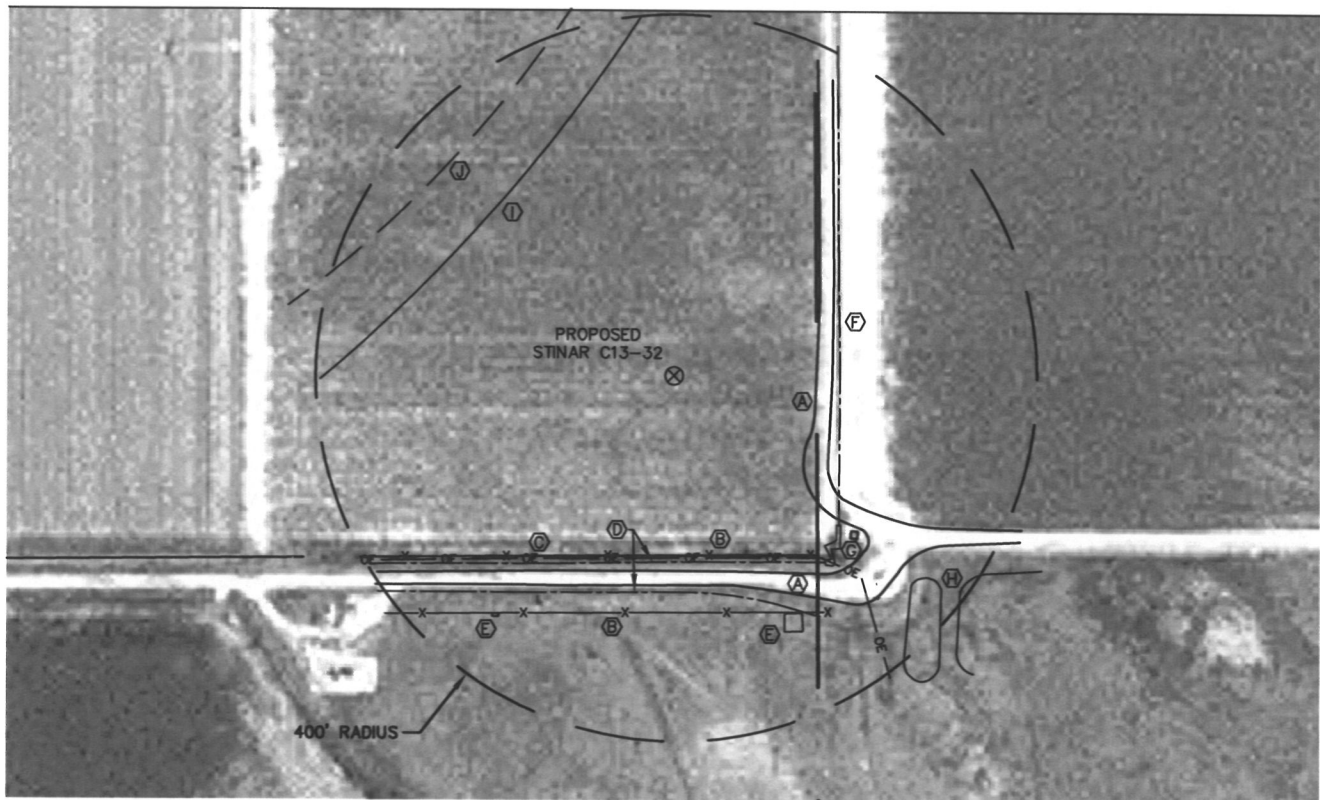
1102 West 19th Street P.O. BOX 2073

Cheyenne, Wyoming 82009

VISIBLE IMPROVEMENTS

THIS MAP DOES NOT REPRESENT A BOUNDARY SURVEY

SECTION 14
TOWNSHIP 4 NORTH
RANGE 64 WEST



IMPROVEMENTS:

- (A) DIRT ROADS - 158' EAST & 215' SOUTH
- (B) FENCE LINES - 197' & 260' SOUTH
- (C) OVERHEAD POWER LINE - 200' SOUTH
- (D) CENTERLINE DIRT DITCHES - 205' & 238' SOUTH
- (E) GAS VALVE ENCLOSURES - 288' SOUTHEAST & 326' SOUTHWEST
- (F) CONCRETE DITCH - 184' EAST
- (G) IRRIGATION WELL & SHACK - 260' SOUTHEAST
- (H) PONDS - 349' & 395' SOUTHEAST
- (I) CROP LINE - 270' NORTHWEST
- (J) IRRIGATION WHEEL TRACK - 342' NORTHWEST

NOTICE: According to Colorado law you MUST commence any legal action based upon any defect in this W.L.C. within three years after you first discover such defect. In no event may any action based upon any defect in this W.L.C. be commenced more than ten years from this said date of the certification shown hereon.

