

CONSTRUCTION LAYOUT DRAWING

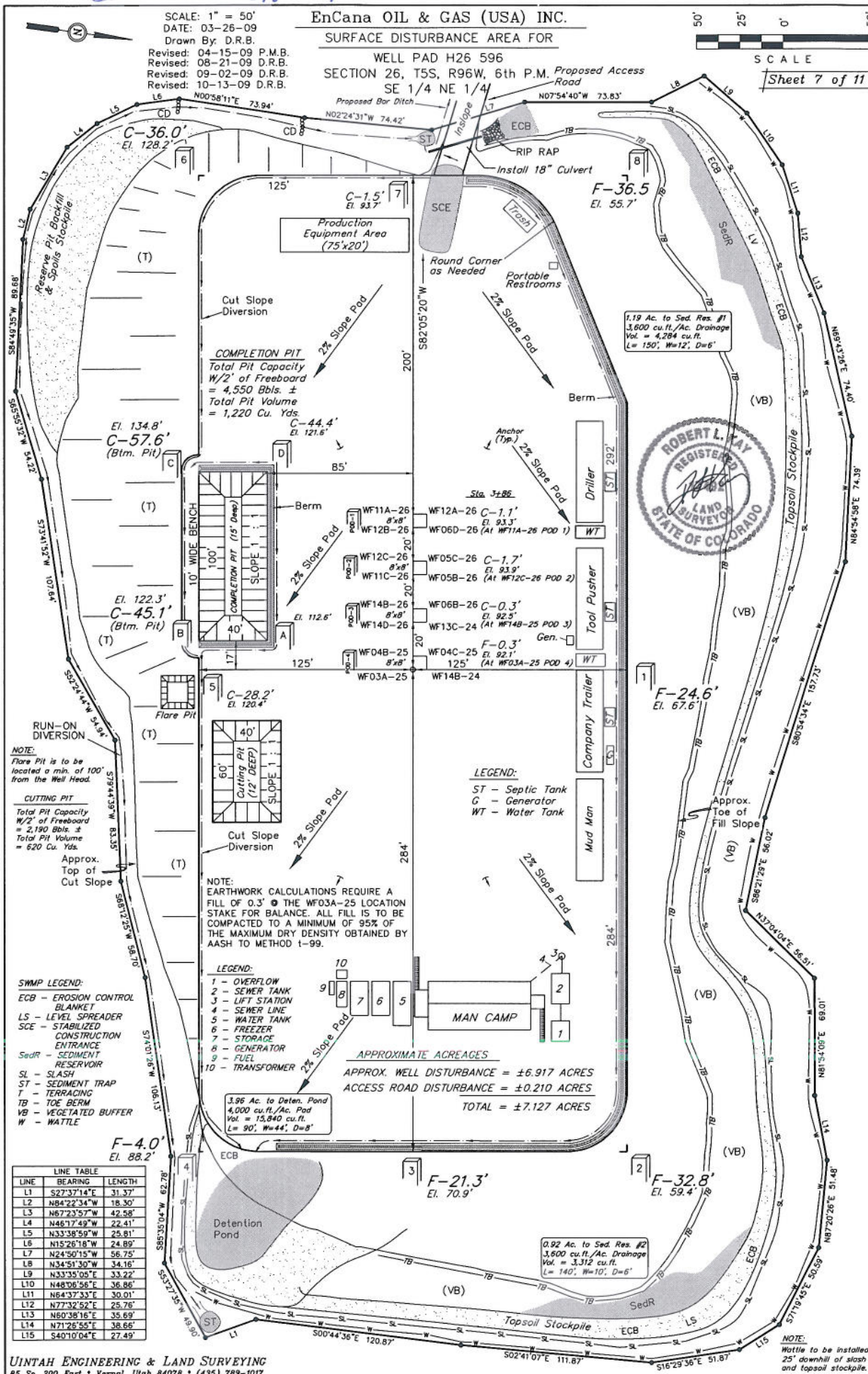
SCALE: 1" = 50'
DATE: 03-26-09
Drawn By: D.R.B.
Revised: 04-15-09 P.M.B.
Revised: 08-21-09 D.R.B.
Revised: 09-02-09 D.R.B.
Revised: 10-13-09 D.R.B.

EnCana OIL & GAS (USA) INC.

SURFACE DISTURBANCE AREA FOR

WELL PAD H26 596
SECTION 26, T5S, R96W, 6th P.M. Proposed Access
Road
SE 1/4 NE 1/4

50' 25' 0' 50'
SCALE
Sheet 7 of 11



CONSTRUCTION LAYOUT DRAWING

DATE: 01-30-09
Drawn By: D.R.B.
Revised: 03-26-09 D.R.B.
Revised: 04-15-09 P.M.B.

EnCana OIL & GAS (USA) INC.

TYPICAL CROSS SECTIONS FOR

WELL PAD H26 596

SECTION 26, T5S, R96W, 6th P.M.

SE 1/4 NE 1/4

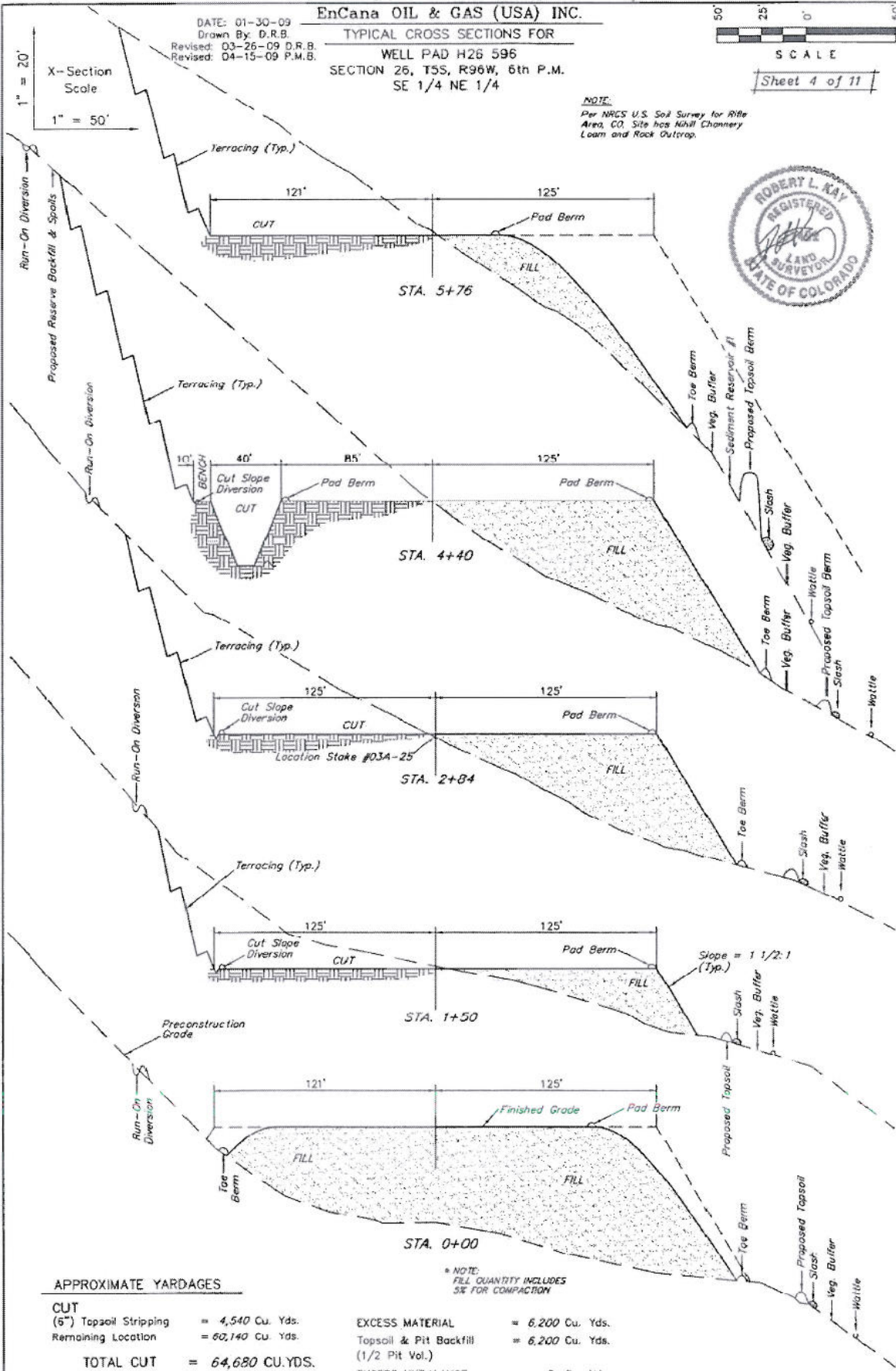


SCALE

Sheet 4 of 11

NOTE

Per NRCS U.S. Soil Survey for Rifle Area, CO. Site has Hüll Channery Loam and Rock Outcrop.



APPROXIMATE YARDAGES

CUT
(5") Topsoil Stripping = 4,540 Cu. Yds.
Remaining Location = 60,140 Cu. Yds.
TOTAL CUT = 64,680 CU.YDS.
FILL = 58,480 CU.YDS.

EXCESS MATERIAL = 6,200 Cu. Yds.
Topsoil & Pit Backfill = 6,200 Cu. Yds.
(1/2 Pit Vol.)
EXCESS UNBALANCE = 0 Cu. Yds.
(After Interim Rehabilitation)

* NOTE:
FILL QUANTITY INCLUDES
SIF FOR COMPACTION

UINTAH ENGINEERING & LAND SURVEYING
85 So. 200 East • Vernal, Utah 84078 • (435) 789-1017