

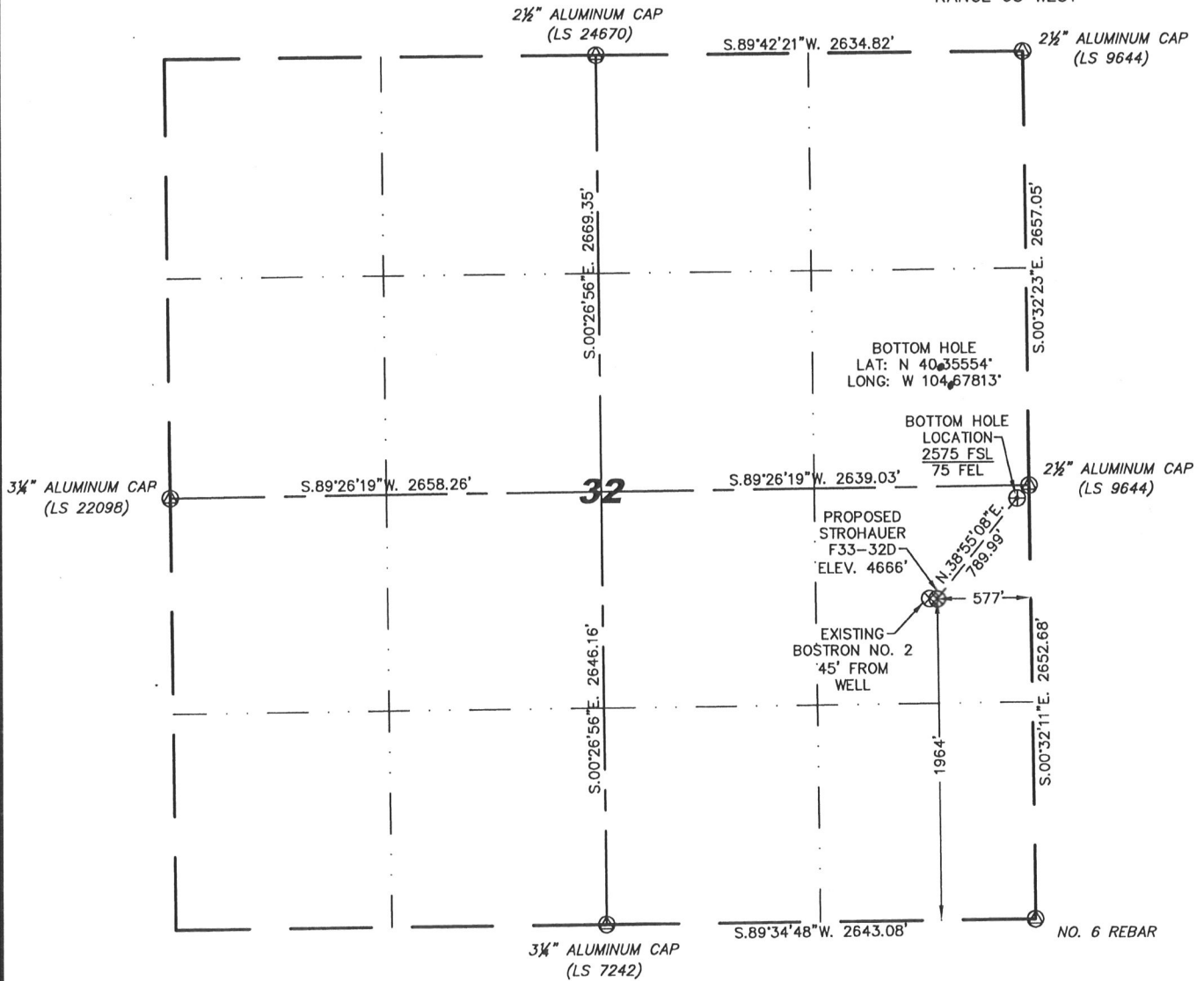
Steil Surveying Services, LLC

1102 West 19th Street P.O. BOX 2073

Cheyenne, Wyoming 82009

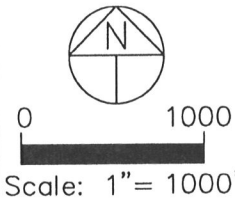
WELL LOCATION CERTIFICATE  
THIS MAP DOES NOT REPRESENT A BOUNDARY SURVEY

SECTION 32  
TOWNSHIP 5 NORTH  
RANGE 65 WEST



IN ACCORDANCE WITH A REQUEST FROM BILL BETSON - NOBLE ENERGY INC, STEIL SURVEYING SERVICES, LLC HAS DETERMINED THE LOCATION OF THE STROHAUER F33-32D WELL TO BE 1964' FSL, 577' FEL, AS MEASURED AT NINETY (90) DEGREES FROM THE SECTION LINES, SECTION 32, TOWNSHIP 5 NORTH, RANGE 65 WEST, 6TH PRINCIPLE MERIDIAN, WELD COUNTY, COLORADO.

I HEREBY CERTIFY THAT THIS WELL LOCATION CERTIFICATE WAS PREPARED BY ME, OR UNDER MY DIRECT SUPERVISION, THAT THE FIELD WORK WAS COMPLETED ON 08/26/2008, FOR AND ON BEHALF OF NOBLE ENERGY INC, THAT IT IS NOT A LAND SURVEY PLAT OR AN IMPROVEMENT SURVEY PLAT, AND THAT IT IS NOT TO BE RELIED UPON FOR ESTABLISHMENT OF FENCE, BUILDING, OR OTHER FUTURE IMPROVEMENT LINES.



NOTES:

- 1) BASIS OF BEARINGS FOR THIS MAP ARE BASED UPON GPS OBSERVATIONS MADE ON 08/25/2008 BETWEEN MONUMENTS LOCATED AT THE SOUTHEAST SECTION CORNER AND THE NORTHEAST SECTION CORNER OF SAID SECTION AND WITH ALL BEARINGS SHOWN HEREON RELATIVE THERETO.
- 2) ELEVATIONS ARE BASED UPON NGS OPUS SOLUTION NAVD 88 DATUM.
- 3) THE NEAREST EXISTING WELL IS: BOSTROM NO. 2, 45' TO THE WEST.
- 4) SEE VISIBLE IMPROVEMENTS EXHIBIT FOR ALL IMPROVEMENTS WITHIN 400'.
- 5) THE LOCATION FALLS IN IRRIGATED CROP LAND.

LATITUDE & LONGITUDE (NAD 83 SURFACE HOLE):  
 LATITUDE: N 40.35387°  
 LONGITUDE: W 104.67993°  
 PDOP: 2.2  
 QUARTER-QUARTER: NE/4SE/4  
 NEAREST PROPERTY LINE: 577' TO THE EAST

LEGEND

- (A) FOUND SURVEY MONUMENT PER MONUMENT RECORD - EXCEPTIONS NOTED.
- (C) CALCULATED DIMENSION

NOTICE: According to Colorado law you MUST commence any legal action based upon any defect in this W.L.C. within three years after you first discover such defect. In no event may any action based upon any defect in this W.L.C. be commenced more than ten years from this said date of the certification shown hereon.

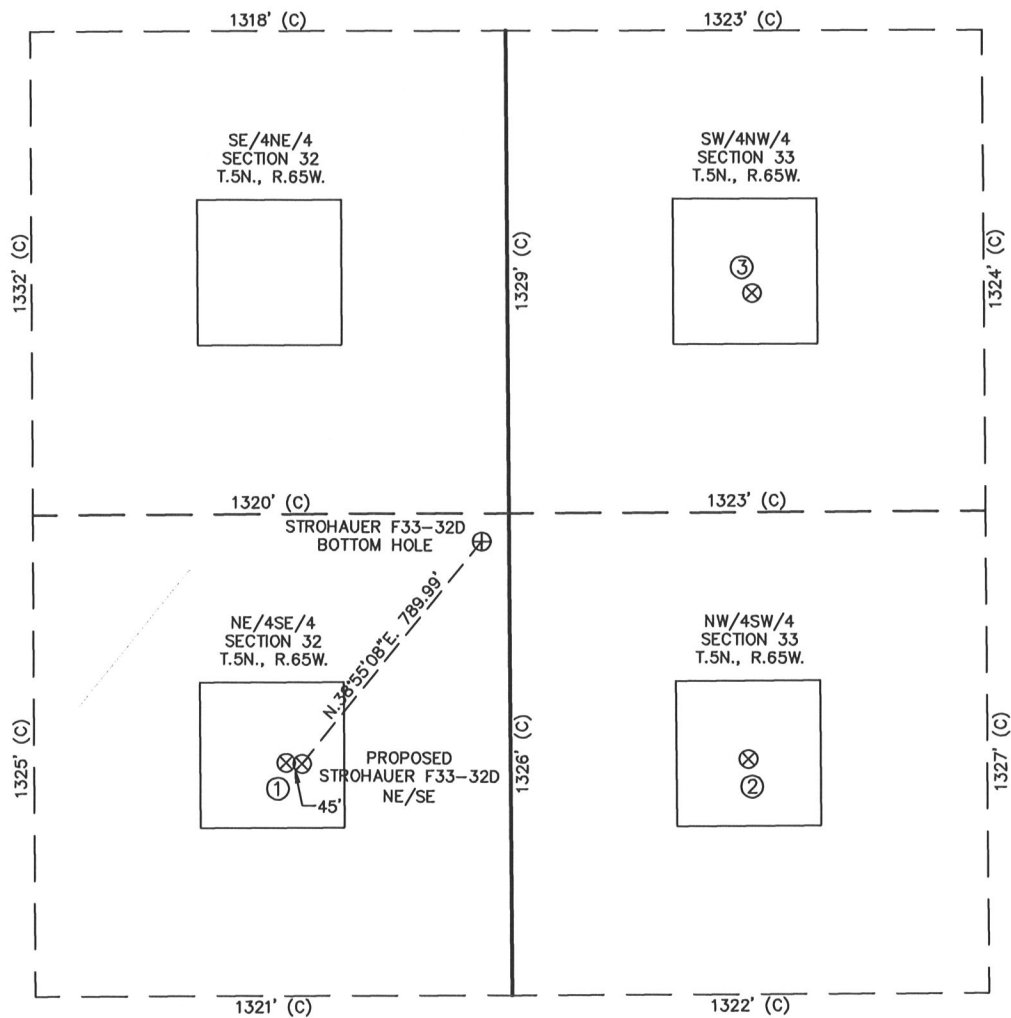
David C. Holmes  
Professional Land Surveyor Registration No. 32828  
State of Colorado

JOB #: Q8086

Completed 05/12/2009

# SITE SKETCH – STROHAUER F33–32D

SECTION 32  
TOWNSHIP 5 NORTH  
RANGE 65 WEST



①	②	③	④
BOSTRON NO. 2	KEISER NO. 2	ALLES 33-4	
NE/SE SEC. 32	NW/SW SEC. 33	SW/NW SEC. 33	
1967' FSL	1974' FSL	2054' FNL	
622' FEL	661' FWL	681' FWL	
EL 4667'	EL 4663'	EL 4665'	
N 40.35388	N 40.35389	N 40.35741	
W 104.68009	W 104.67548	W 104.67541	
PDOP 2.3	PDOP 2.8	PDOP 1.8	

**NOTES:**

- 1) THIS SKETCH DOES NOT REPRESENT A BOUNDARY SURVEY.
- 2) THE DATUM FOR THE LATITUDES AND LONGITUDES ON THIS SKETCH IS NAD83.

