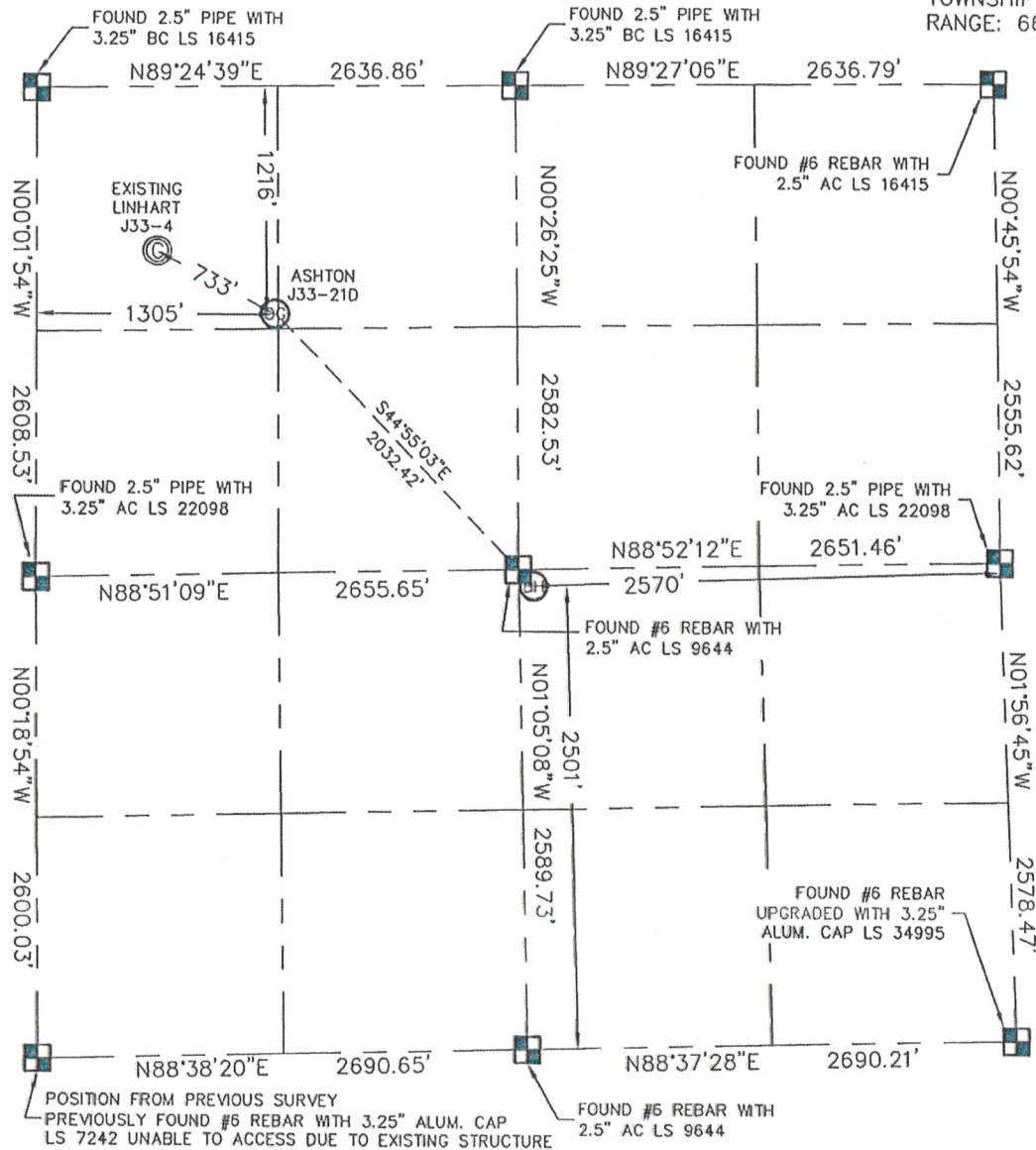


# WELL LOCATION CERTIFICATE

THIS MAP DOES NOT REPRESENT A BOUNDARY SURVEY

SECTION: 33  
TOWNSHIP: 5N  
RANGE: 66W



In accordance with a request from Drew Hetherington with Noble Energy Inc. King Surveyors Inc. has determined the surface location of the ASHTON J33-21D to be 1216' from the NORTH line and 1305' from the WEST line and the bottom hole to be 2501' from the SOUTH line and 2570' from the EAST line as measured at right angles from the section line of Section 33, Township 5 North, Range 66 West of the Sixth Principal Meridian, County of Weld, State of Colorado. I hereby state that this Well Location Certificate was prepared by me, or under my direct supervision, that the fieldwork was completed on 6/4/2009, for and on behalf of Noble Energy Inc. That this is not a Land Survey Plat or an Improvement Survey Plat, and that it is not to be relied upon for establishment of fence, building, or other future improvement lines.

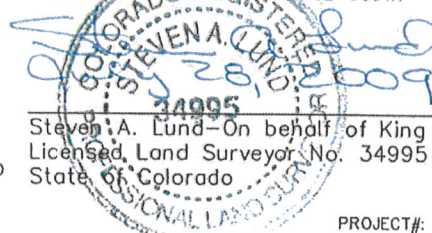
**NOTE:**

- 1) Bearings shown are Grid Bearings of the Colorado State Plane Coordinate System, North Zone, North American Datum 1983/92.
- 2) Ground elevations are based on an observed GPS elevation (NAVD 1988 DATUM).
- 3) NEAREST EXISTING WELL: LINHART J33-4 733'
- 4) IMPROVEMENTS: See VISIBLE IMPROVEMENTS exhibit for all improvements within 400' of well head
- 5) SURFACE USE: GRASS AREA, PASTURE

SURFACE LOCATION  
LATITUDE: 40.35991°N  
LONGITUDE: 104.78946°W  
PDOP: 1.2  
ELEV: 4805

BOTTOM HOLE  
LATITUDE: 40.35593°N  
LONGITUDE: 104.78435°W

1/4, 1/4 - NW 1/4 NW 1/4  
NEAREST PROPERTY LINE: 82' SOUTH



Steven A. Lund - On behalf of King Surveyors, Inc.  
Licensed Land Surveyor No. 34995  
State of Colorado

PROJECT#: 2008108

**NOTE**

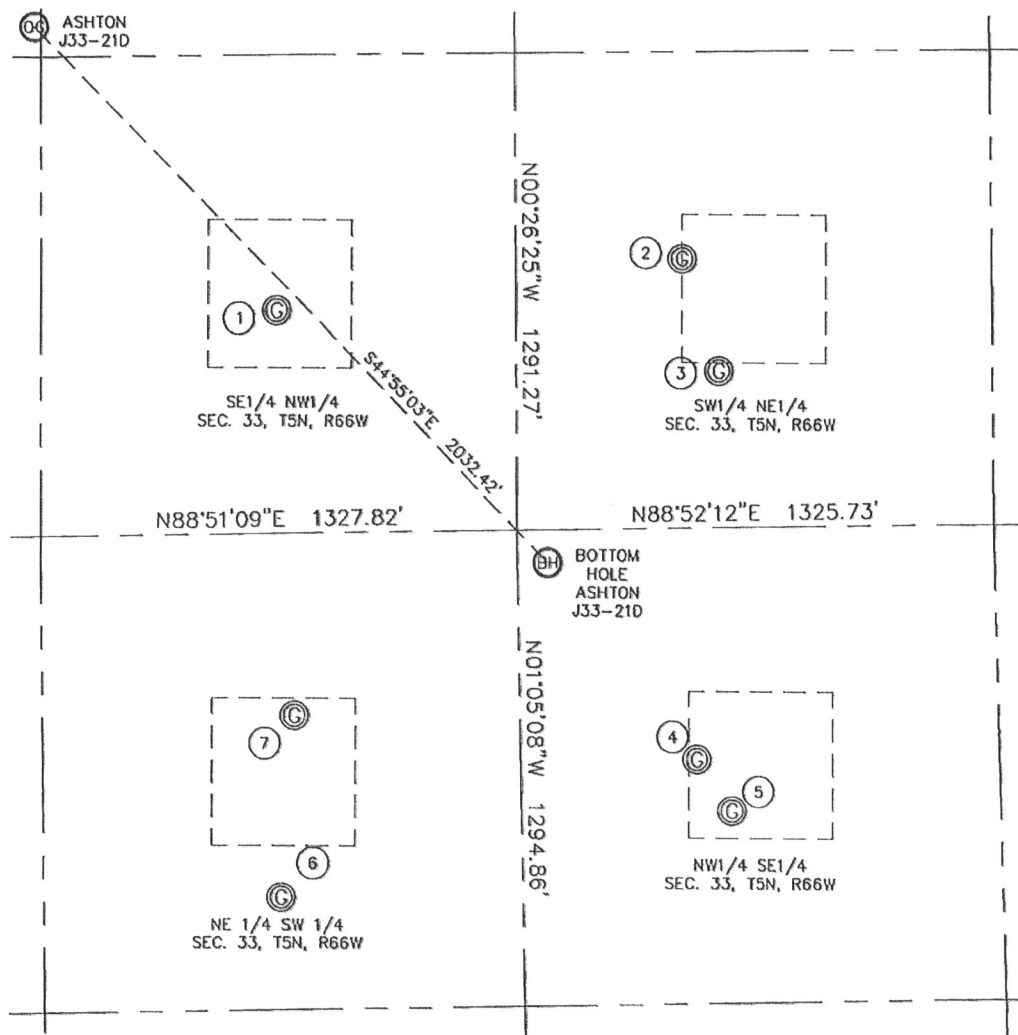
According to Colorado law, you must commence any legal action based upon any defect in this W.L.C. within three years after you discover such defect. In no event, may any action based upon any defect in this survey be commenced more than ten years after the date of the certificate shown hereon. (13-80-105 C.R.S.)

## LEGEND

- = ALIQUOT MONUMENT AS DESCRIBED
- = CALCULATED POSITION

KING SURVEYORS, INC. 650 GARDEN DR. WINDSOR, CO 80550  
**SITE SKETCH**

SECTION: 33  
 TOWNSHIP: 5N  
 RANGE: 66W



①

FLACK 1  
 SE1/4 NW1/4  
 1989' FNL  
 1980' FWL  
 LAT: 40.35780°N  
 LONG: 104.78706°W  
 PDOP: 1.2  
 ELEV: 4802

②

LESSER PM J33-7A  
 SW1/4 NE1/4  
 1852' FNL  
 2184' FEL  
 LAT: 40.35818°N  
 LONG: 104.78299°W  
 PDOP: 3.0  
 ELEV: 4792

③

LESSER PM J33-7  
 SW1/4 NE1/4  
 2154' FNL  
 2085' FEL  
 LAT: 40.35735°N  
 LONG: 104.78263°W  
 PDOP: 2.0  
 ELEV: 4788

④

DOS RIOS J33-10  
 NW1/4 SE1/4  
 1958' FSL  
 2172' FEL  
 LAT: 40.35446°N  
 LONG: 104.78287°W  
 PDOP: 2.1  
 ELEV: 4738

⑤

DOS RIOS 33-10H6  
 NW1/4 SE1/4  
 1816' FSL  
 2080' FEL  
 LAT: 40.35407°N  
 LONG: 104.78253°W  
 PDOP: 1.5  
 ELEV: 4731

⑥

SPOMER BC J33-11  
 NE1/4 SW1/4  
 1604' FSL  
 1992' FWL  
 LAT: 40.35344°N  
 LONG: 104.78704°W  
 PDOP: 1.4  
 ELEV: 4742

⑦

SPOMER 1  
 NE1/4 SW1/4  
 2096' FSL  
 2030' FWL  
 LAT: 40.35479°N  
 LONG: 104.78690°W  
 PDOP: 2.1  
 ELEV: 4800

