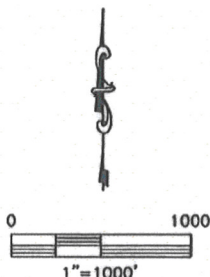
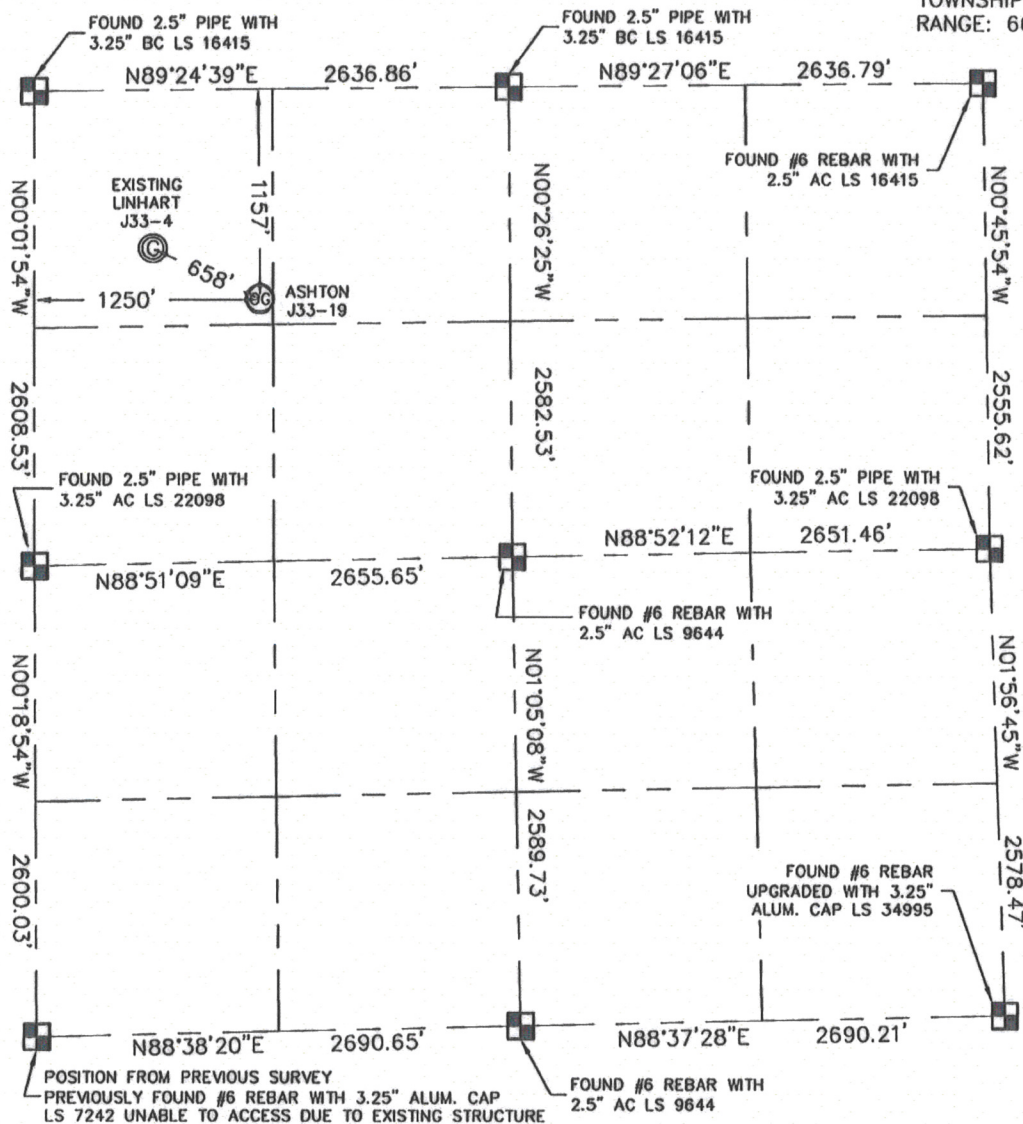


KING SURVEYORS, INC. 650 GARDEN DR. WINDSOR, CO 80550

## WELL LOCATION CERTIFICATE

THIS MAP DOES NOT REPRESENT A BOUNDARY SURVEY

SECTION: 33  
TOWNSHIP: 5N  
RANGE: 66W



In accordance with a request from Drew Hetherington with Noble Energy Inc., King Surveyors Inc. has determined the surface location of the ASHTON J33-19 to be 1157' from the NORTH line and 1250' from the WEST line as measured at right angles from the section line of Section 33, Township 5 North, Range 66 West of the Sixth Principal Meridian, County of Weld, State of Colorado.

I hereby state that this Well Location Certificate was prepared by me, or under my direct supervision, that the fieldwork was completed on 6/4/2009, for and on behalf of Noble Energy Inc. That this is not a Land Survey Plat or an Improvement Survey Plat, and that it is not to be relied upon for establishment of fence, building, or other future improvement lines.

### NOTE:

- 1) Bearings shown are Grid Bearings of the Colorado State Plane Coordinate System, North Zone, North American Datum 1983/92.
- 2) Ground elevations are based on an observed GPS elevation (NAVD 1988 DATUM).
- 3) NEAREST EXISTING WELL: LINHART J33-4 658'
- 4) IMPROVEMENTS: See VISIBLE IMPROVEMENTS exhibit for all improvements within 400' of well head
- 5) SURFACE USE: GRASS AREA, PASTURE



### SURFACE LOCATION

LATITUDE: 40.36008°N  
LONGITUDE: 104.78965°W  
PDOP: 2.2  
ELEV: 4803  
1/4, 1/4 NW 1/4 NW 1/4  
NEAREST PROPERTY LINE: 141' SOUTH

### NOTE

According to Colorado law, you must commence any legal action based upon any defect in this W.L.C. within three years after you discover such defect. In no event, may any action based upon any defect in this survey be commenced more than ten years after the date of the certificate shown hereon. (13-80-105 C.R.S.)

### LEGEND

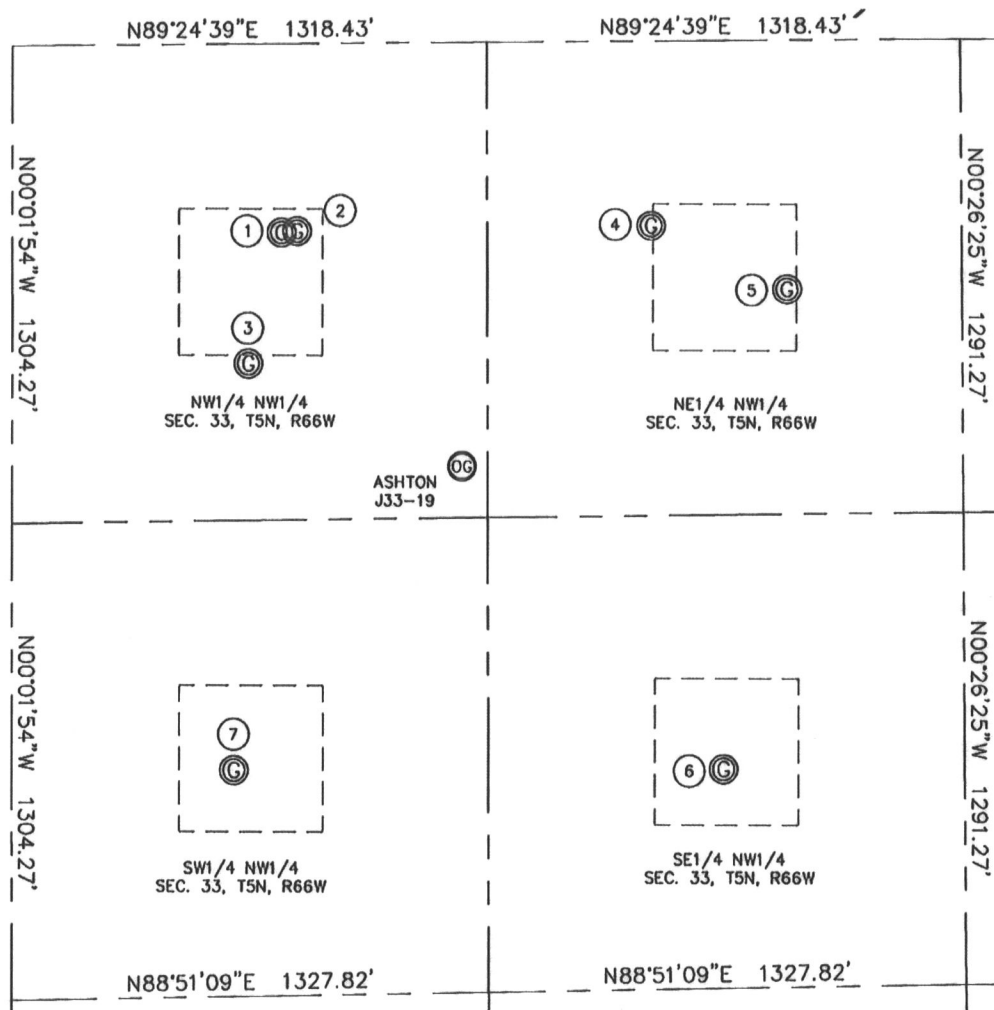
-  = ALIQUOT MONUMENT AS DESCRIBED
-  = CALCULATED POSITION

Steven A. Lund-On behalf of King Surveyors, Inc.  
Licensed Land Surveyor No. 34995  
State of Colorado

PROJECT#: 2008108

KING SURVEYORS, INC. 650 GARDEN DR. WINDSOR, CO 80550  
**SITE SKETCH**

SECTION: 33  
 TOWNSHIP: 5N  
 RANGE: 66W



①

LINHART 4-33  
 NW1/4 NW1/4  
 516' FNL  
 746' FWL  
 LAT: 40.36152°N  
 LONG: 104.79594°W  
 PDOP: 1.4  
 ELEV: 4823

②

LINHART 5  
 NW1/4 NW1/4  
 513' FNL  
 789' FWL  
 LAT: 40.36184°N  
 LONG: 104.79129°W  
 PDOP: 1.2  
 ELEV: 4808

③

LINHART J33-4  
 NW1/4 NW1/4  
 873' FNL  
 655' FWL  
 LAT: 40.36085°N  
 LONG: 104.79178°W  
 PDOP: 1.9  
 ELEV: 4807

④

LINHART J33-3  
 NE1/4 NW1/4  
 505' FNL  
 1777' FWL  
 LAT: 40.36187°N  
 LONG: 104.78775°W  
 PDOP: 2.0  
 ELEV: 4810

⑤

LINHART 3-33  
 NE1/4 NW1/4  
 681' FNL  
 2156' FWL  
 LAT: 40.36139°N  
 LONG: 104.78639°W  
 PDOP: 2.2  
 ELEV: 4802

⑥

FLACK 1  
 SE1/4 NW1/4  
 1989' FNL  
 1980' FWL  
 LAT: 40.35780°N  
 LONG: 104.78706°W  
 PDOP: 1.2  
 ELEV: 4802

⑦

FLACK 33-5H6  
 SW1/4 NW1/4  
 1982' FNL  
 616' FWL  
 LAT: 40.35781°N  
 LONG: 104.79195°W  
 PDOP: 1.6  
 ELEV: 4813

