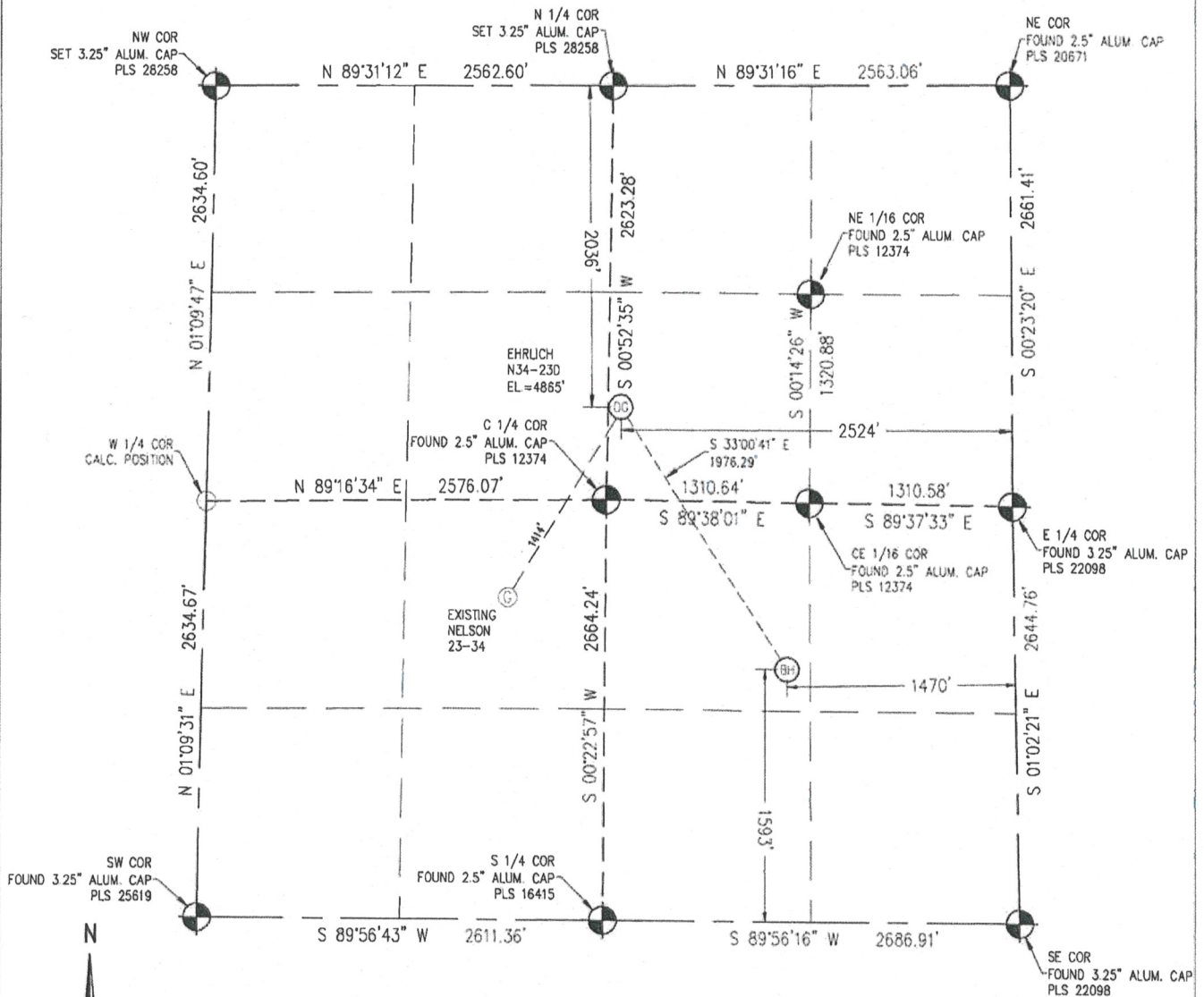


Baseline Engineering Corp. 710 11th Avenue Suite 105 Greeley, Colorado 80631

WELL LOCATION CERTIFICATE

THIS MAP DOES NOT REPRESENT A BOUNDARY SURVEY

SECTION 34
TOWNSHIP 5 NORTH
RANGE 67 WEST



IN ACCORDANCE WITH A REQUEST FROM JOE MARTIN - NOBLE ENERGY INC., BASELINE ENGINEERING CORP. HAS DETERMINED THE LOCATION OF THE EHRUCH N34-23D TO BE 2036' FNL, 2524' FEL, AS MEASURED AT NINETY (90) DEGREES FROM THE SECTION LINE OF SECTION 34, TOWNSHIP 5 NORTH, RANGE 67 WEST AND THE BOTTOM HOLE LOCATION TO BE 1593' FSL AND 1470' FEL OF SECTION 34, TOWNSHIP 5 NORTH, RANGE 67 WEST, 6TH PRINCIPAL MERIDIAN, WELD COUNTY, COLORADO

I HEREBY CERTIFY THAT THIS WELL LOCATION CERTIFICATE WAS PREPARED BY ME, OR UNDER MY DIRECT SUPERVISION, THAT THE FIELD WORK WAS COMPLETED ON 02/06/2009, THAT IT IS NOT A LAND SURVEY PLAT OR AN IMPROVEMENT SURVEY PLAT, AND THAT IT IS NOT TO BE RELIED UPON FOR ESTABLISHMENT OF FENCE, BUILDING, OR OTHER FUTURE IMPROVEMENT LINES

NOTES:

- 1) LAT/LONG SHOWN ARE BASED ON A GPS OBSERVATION (NAD83).
- 2) BEARINGS SHOWN ARE GRID BEARINGS OF THE COLORADO STATE PLANE COORDINATE SYSTEM, NORTH ZONE, NORTH AMERICAN DATUM 1983/2007
- 3) GROUND ELEVATIONS ARE BASED ON A GPS OBSERVATION (NAVD 88 DATUM)
- 4) ALL DISTANCES SHOWN ARE FIELD MEASURED UNLESS OTHERWISE NOTED.
- 5) THE NEAREST EXISTING WELL IS: NELSON 23-34 1414' SOUTHWEST
- 6) IMPROVEMENTS: SEE VISIBLE IMPROVEMENTS EXHIBIT FOR ALL VISIBLE IMPROVEMENTS WITHIN 400' OF WELL HEAD.
- 7) SURFACE USE: HAY FIELD

NOTICE: According to Colorado law you MUST commence any legal action based upon any defect in this WLC within three years after you first discover such defect. In no event may any action based upon any defect in this WLC be commenced more than ten years from this said date of the certification shown herein.

LATITUDE & LONGITUDE (NAD 83 SURFACE HOLE):

LATITUDE: 40.357833° N

LONGITUDE: 104.878841° W

PDOP: 1.5

1/4, 1/4: SW 1/4 NE 1/4

NEAREST PROPERTY LINE: 237' N

BOTTOM HOLE:

LATITUDE: 40.353265° N

LONGITUDE: 104.875020° W

LEGEND

- = ALIQUOT MONUMENT AS DESCRIBED
- = CALCULATED SURVEY MONUMENT POSITION
- (C) = CALCULATED DIMENSION



John C. Barickman

Professional Land Surveyor Registration No 28258

State of Colorado

FOR AND ON BEHALF OF BASELINE ENGINEERING CORP.

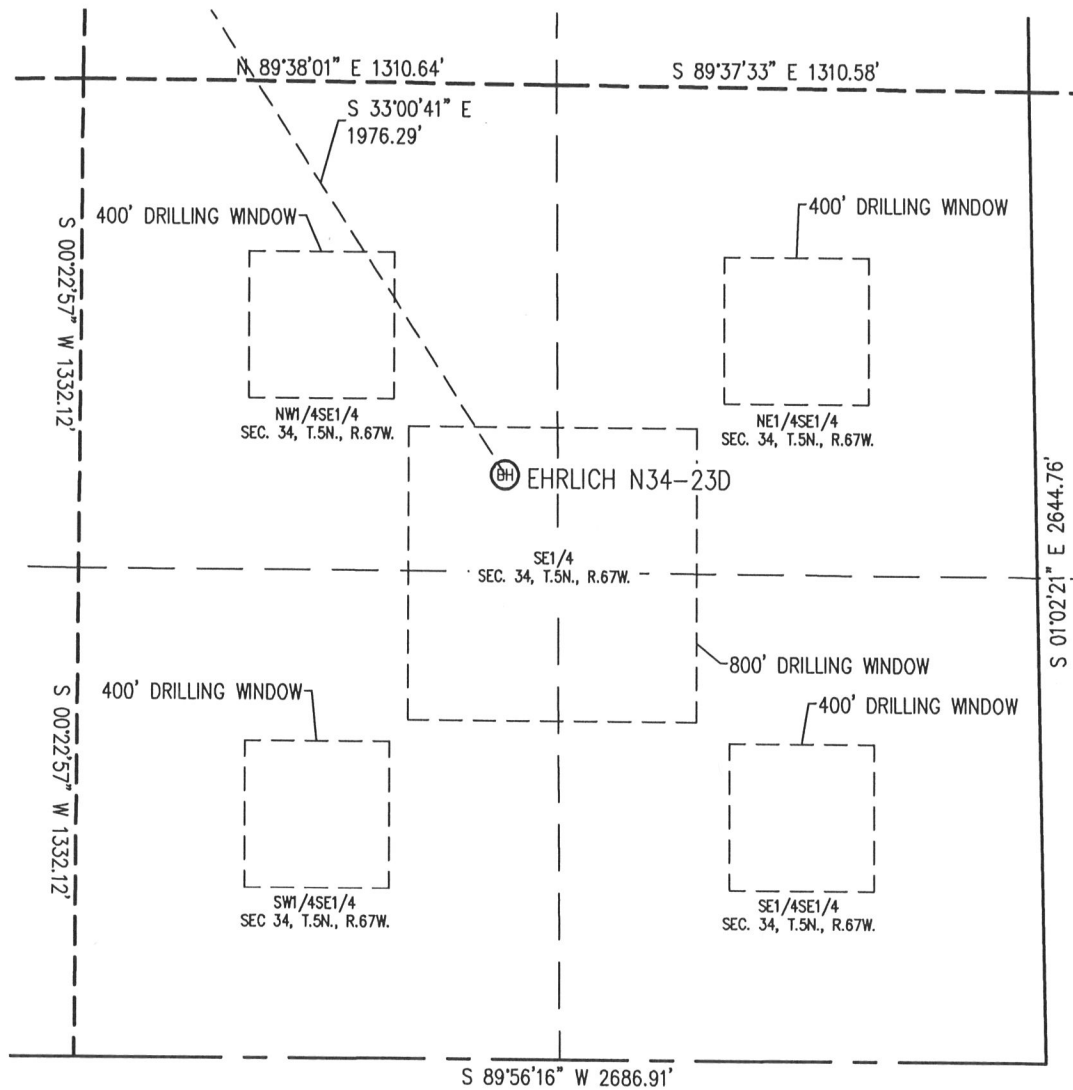
Completed

5/8/2009

JOB #: NOB5N67W34-03

SITE SKETCH

SECTION 34
TOWNSHIP 5 NORTH
RANGE 67 WEST



NOTES:

- 1) THIS SKETCH DOES NOT REPRESENT A BOUNDARY SURVEY.
- 2) THE DATUM FOR THE LATITUDES AND LONGITUDES ON THIS SKETCH IS NAD83.

