



October 23, 2009

Department of Natural Resources
Oil and Gas Conservation Commission
The Chancery Building
1120 Lincoln St., Suite 801
Denver, CO 80203

Re: **20 Day Certification Letter - 318A-e**
VARRA 41-32
Township 3 North, Range 67 West, Section 32: SES/4NE/4
Unit Spacing: 03N-67W-32 E/2NE/4
 03N-67W-33 W/2NW/4
Weld County, Colorado

Ladies/Gentlemen:

Kerr-McGee Oil and Gas Onshore LP ("KMG") hereby certifies to the Director that a twenty (20) day notice has been given by certified mail to all owners in the proposed wellbore spacing unit. We have not received any objections to such well location, proposed spacing unit, or additional producing formation. KMG hereby requests the Director to approve the boundary well.

If you have any questions or issues regarding this permit, please contact Cheryl Light at (720) 929-6461.

Very truly yours,

KERR-McGEE OIL AND GAS ONSHORE LP

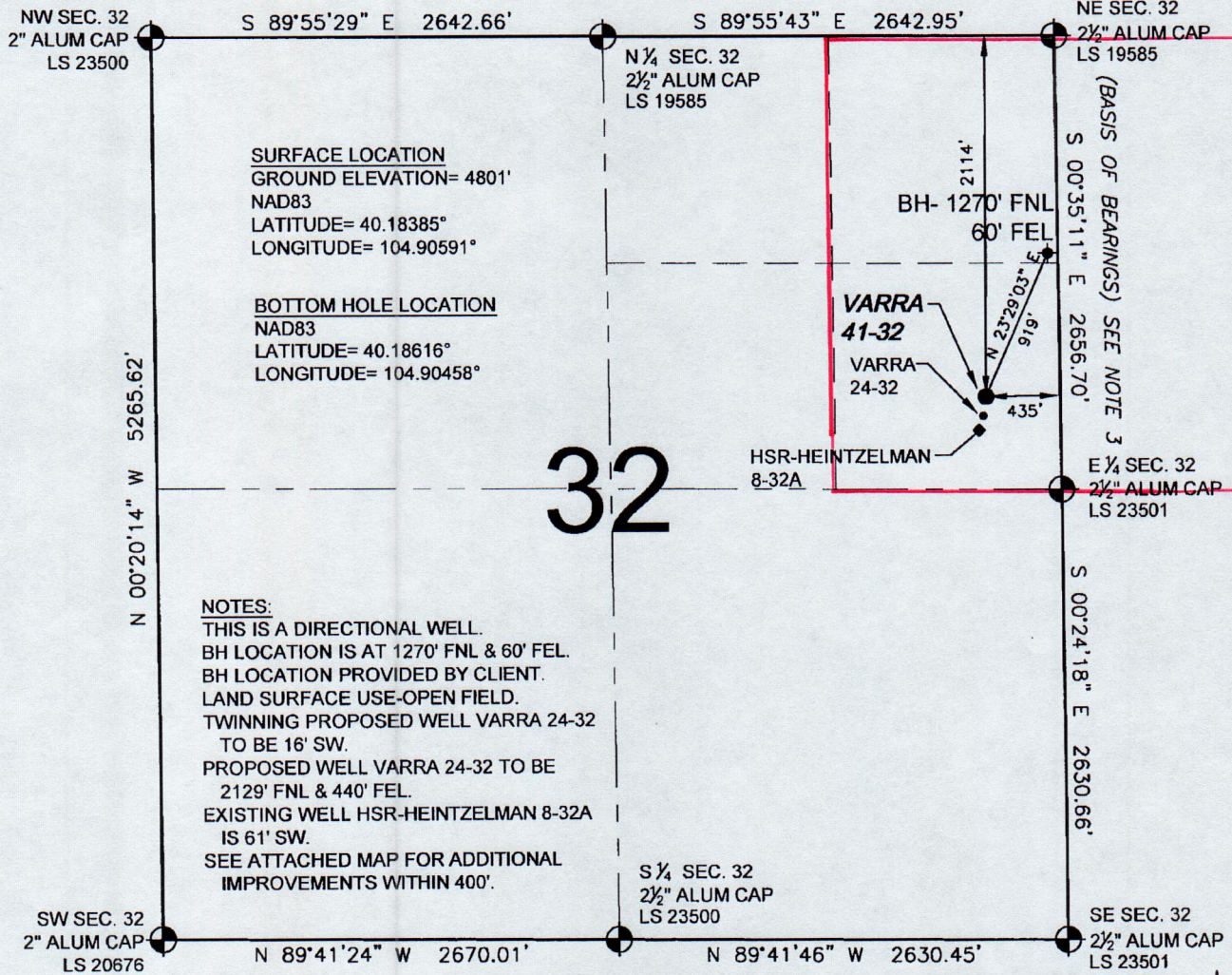
A handwritten signature in blue ink that reads 'Cheryl Light'.

Cheryl Light
Senior Regulatory Analyst

:cl
Enclosure

WELL LOCATION CERTIFICATE: VARRA 41-32

SECTION 32, TOWNSHIP 3 NORTH, RANGE 67 WEST, 6TH P.M.



SURFACE LOCATION
GROUND ELEVATION= 4801'
NAD83
LATITUDE= 40.18385°
LONGITUDE= 104.90591°

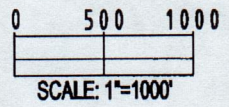
BOTTOM HOLE LOCATION
NAD83
LATITUDE= 40.18616°
LONGITUDE= 104.90458°

NOTES:
THIS IS A DIRECTIONAL WELL.
BH LOCATION IS AT 1270' FNL & 60' FEL.
BH LOCATION PROVIDED BY CLIENT.
LAND SURFACE USE-OPEN FIELD.
TWINNING PROPOSED WELL VARRA 24-32
TO BE 16' SW.
PROPOSED WELL VARRA 24-32 TO BE
2129' FNL & 440' FEL.
EXISTING WELL HSR-HEINTZELMAN 8-32A
IS 61' SW.
SEE ATTACHED MAP FOR ADDITIONAL
IMPROVEMENTS WITHIN 400'.

WELL **VARRA 41-32** TO BE LOCATED 2114' FNL AND 435' FEL, SECTION 32, T3N, R67W OF THE 6th P.M.

LEGEND

- ⊕ = EXISTING MONUMENT ⊕ = BOTTOM HOLE BH = BOTTOM HOLE
- = PROPOSED WELL ⊕ = EXISTING WELL

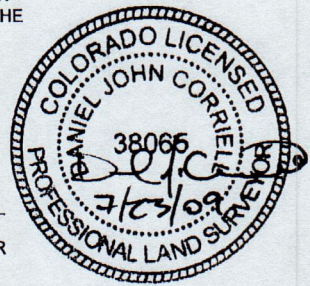


NOTES:

1. THIS SURVEY WAS DONE BY GPS METHODS AND CONFORMS TO THE MINIMUM STANDARDS SET BY THE C.O.G.C.C., RULE NO. 215 (PDOP VALUE IS LESS THAN 6.0, LATITUDE AND LONGITUDE ARE ACCURATE TO 5 DECIMAL PLACES, AND GPS OBSERVATIONS ARE DIFFERENTIAL AND DONE BY QUALIFIED PERSONNEL.)
2. ELEVATIONS SHOWN AT THE WELL HEAD, AS WELL AS HORIZONTAL CONTROL, ARE BASED ON GPS-RTK VALUES DERIVED FROM DOING 2-HOUR STATIC GPS SESSIONS AND REDUCTIONS USING O.P.U.S. SOLUTIONS.
VERTICAL = NAVD88; HORIZONTAL = NAD83/92
3. THE BEARINGS SHOWN HEREON ARE BASED ON GPS OBSERVATIONS BETWEEN THE MONUMENTS SHOWN HEREON AS FOUND ON THE FIELD DATE BELOW.
4. DISTANCES SHOWN ARE AT GROUND LEVEL, AS MEASURED IN THE FIELD, WITH TIES TO WELLS MEASURED AT A PERPENDICULAR TO SECTION LINES.

I, DANIEL J. CORRIELL, A LICENSED PROFESSIONAL LAND SURVEYOR IN THE STATE OF COLORADO DO HEREBY CERTIFY TO **KERR-MCGEE OIL & GAS ONSHORE LP**, THAT THE SURVEY AND WELL LOCATION CERTIFICATE SHOWN HEREON WERE DONE BY ME OR UNDER MY DIRECT SUPERVISION AND THAT THE DRAWING SHOWN HEREON ACCURATELY DEPICTS THE PROPOSED LOCATION OF THE WELL **VARRA 41-32**. THIS CERTIFICATE DOES NOT REPRESENT A LAND SURVEY PLAT OR IMPROVEMENT SURVEY PLAT AS DEFINED BY C.R.S. 38-51-102 AND CANNOT BE RELIED UPON TO DETERMINE OWNERSHIP.

DANIEL J. CORRIELL, PLS 38065
COLORADO LICENSED PROFESSIONAL LAND SURVEYOR
FOR AND ON BEHALF OF P.F.S., LLC

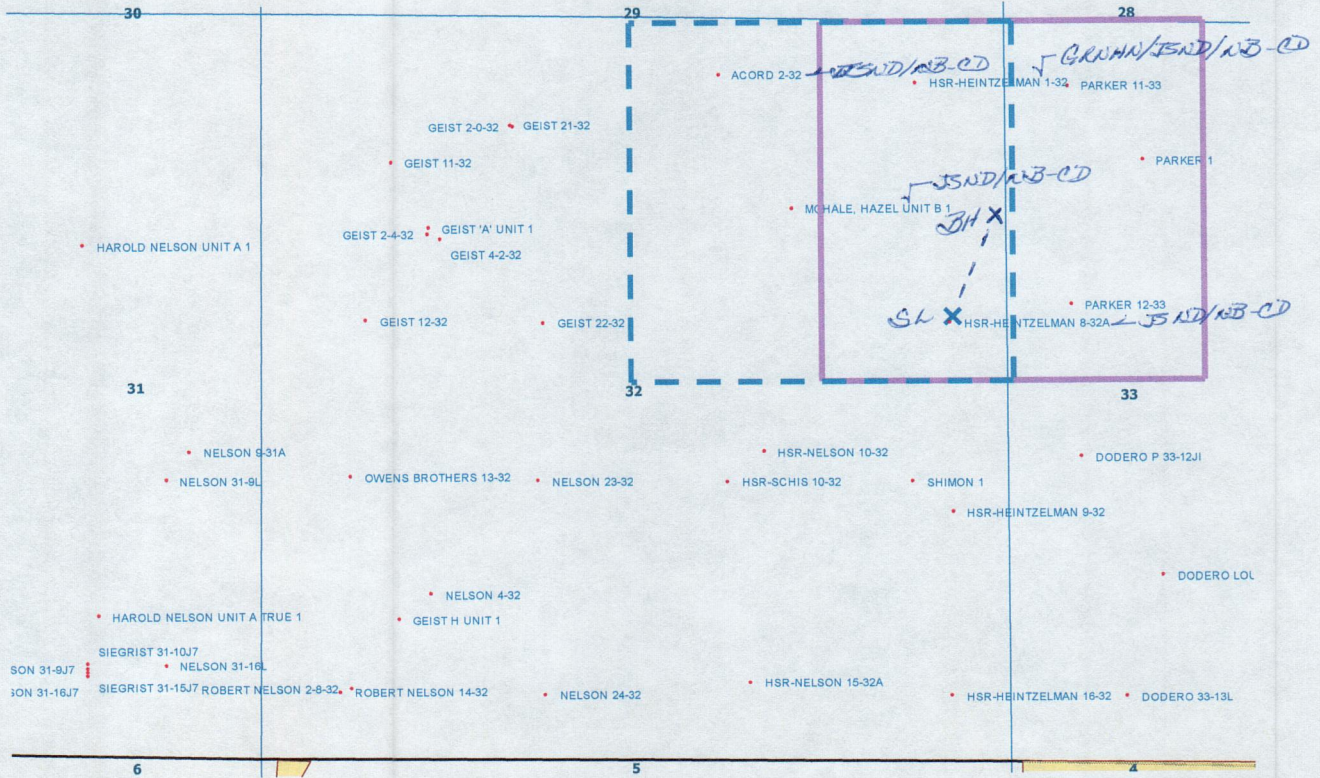


PREPARED BY: PFS Petroleum Field Services, LLC 1801 W. 13th Ave. Denver, CO 80204	FIELD DATE: 03-31-08	WELL NAME: VARRA 41-32
	DRAWING DATE: 04-01-08	SURFACE LOCATION: WELD COUNTY, COLORADO
	BY: SMF	SE 1/4 NE 1/4, SEC. 32, T3N, R67W

NOTICE: ACCORDING TO COLORADO LAW YOU MUST COMMENCE ANY LEGAL ACTION BASED UPON ANY DEFECT IN THIS SURVEY WITHIN THREE YEARS AFTER YOU FIRST DISCOVER SUCH DEFECT. IN NO EVENT MAY ANY ACTION BASED UPON ANY DEFECT IN THIS SURVEY BE COMMENCED MORE THAN TEN YEARS FROM THIS SAID DATE OF THIS CERTIFICATION SHOWN HEREON.

VARRA 41-32

SENE Sec. 32 T3N-R67W



LEGEND



Proposed 160 acre Spacing Unit (Solid line).



Bottom Hole Located NE/4NE/4, Sec. 32-T3N-R67W (Dashed line).

This 1/4 Section has less than 8 bottom hole wells producing from the Codell, Niobrara & J Sand Formations.