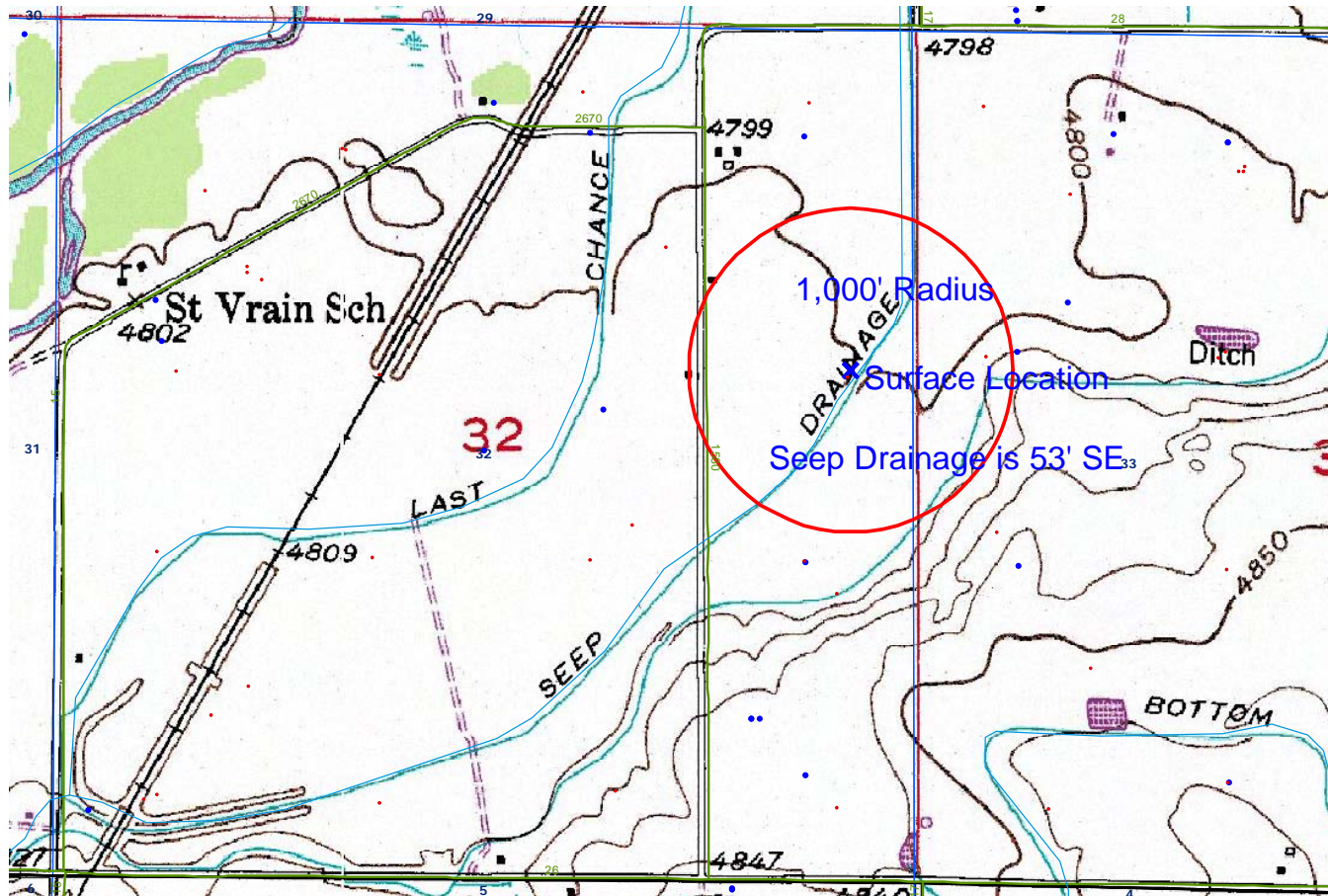


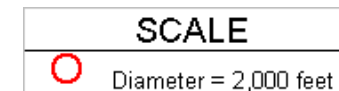
VARRA 24-32

TOPO

HYDROLOGY MAP-A



TOWNSHIP 3 NORTH, RANGE 67 WEST



### LEGEND A

#### WATER RESOURCES

- Water Wells
- Lakes
- Major Rivers
- Streams
- 300-Foot Stream Buffers

### LEGEND B

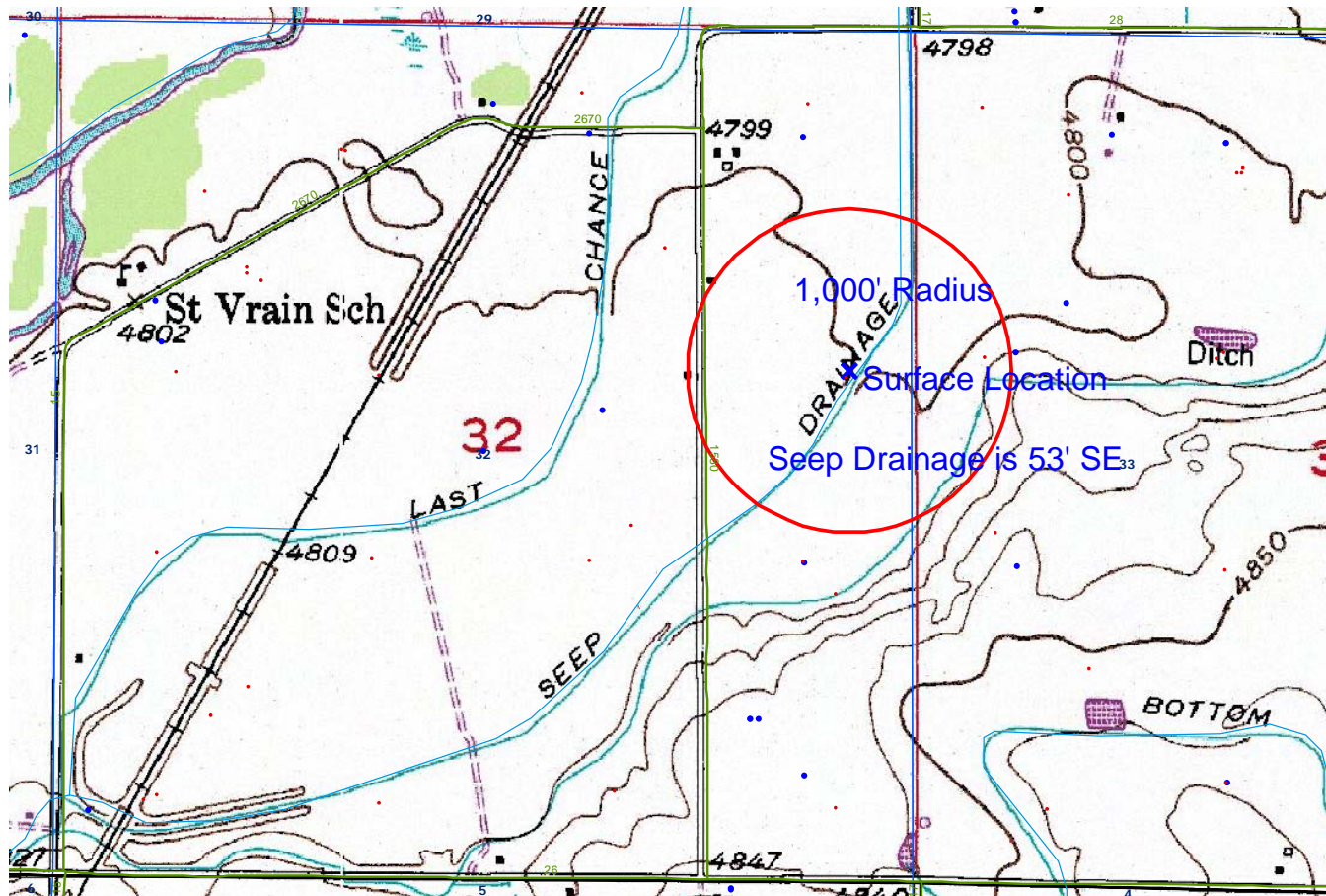
#### 1200-SEARIES WILDLIFE AREAS

- RSO Areas
- RSO\_Osprey\_Curren
- SWH Areas
- State Wildlife Areas

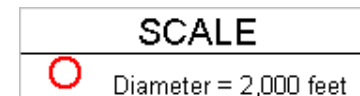
**VARRA 24-32**

**TOPO**

**HYDROLOGY MAP-B-**



TOWNSHIP 3 NORTH, RANGE 67 WEST



**LEGEND A**

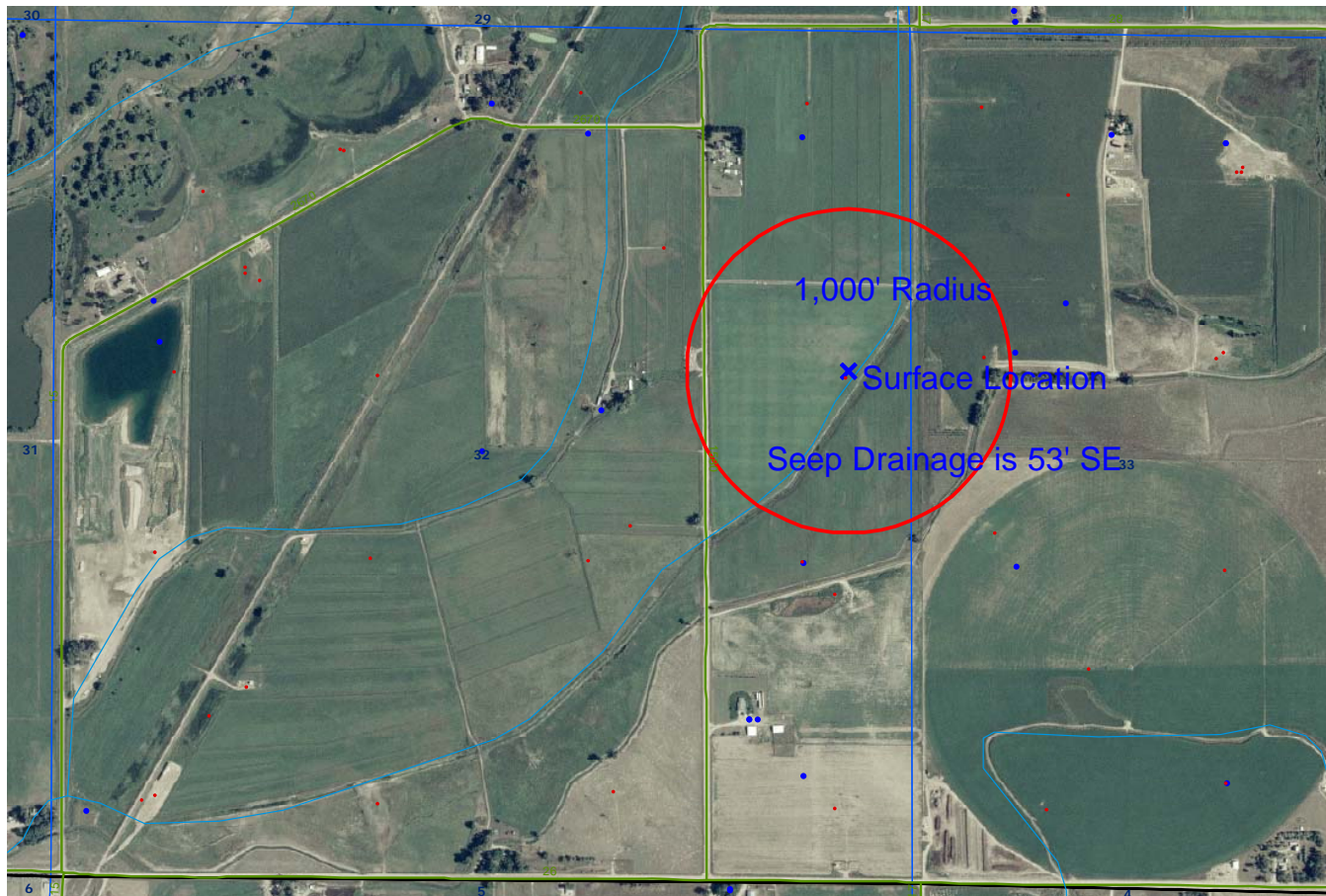
**WATER RESOURCES**

- Water Wells
- Lakes
- Major Rivers
- Streams
- 300-Foot Stream Buffers

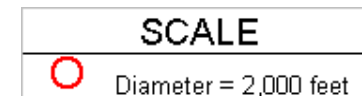
**LEGEND B**

**1200-SEARIES WILDLIFE AREAS**

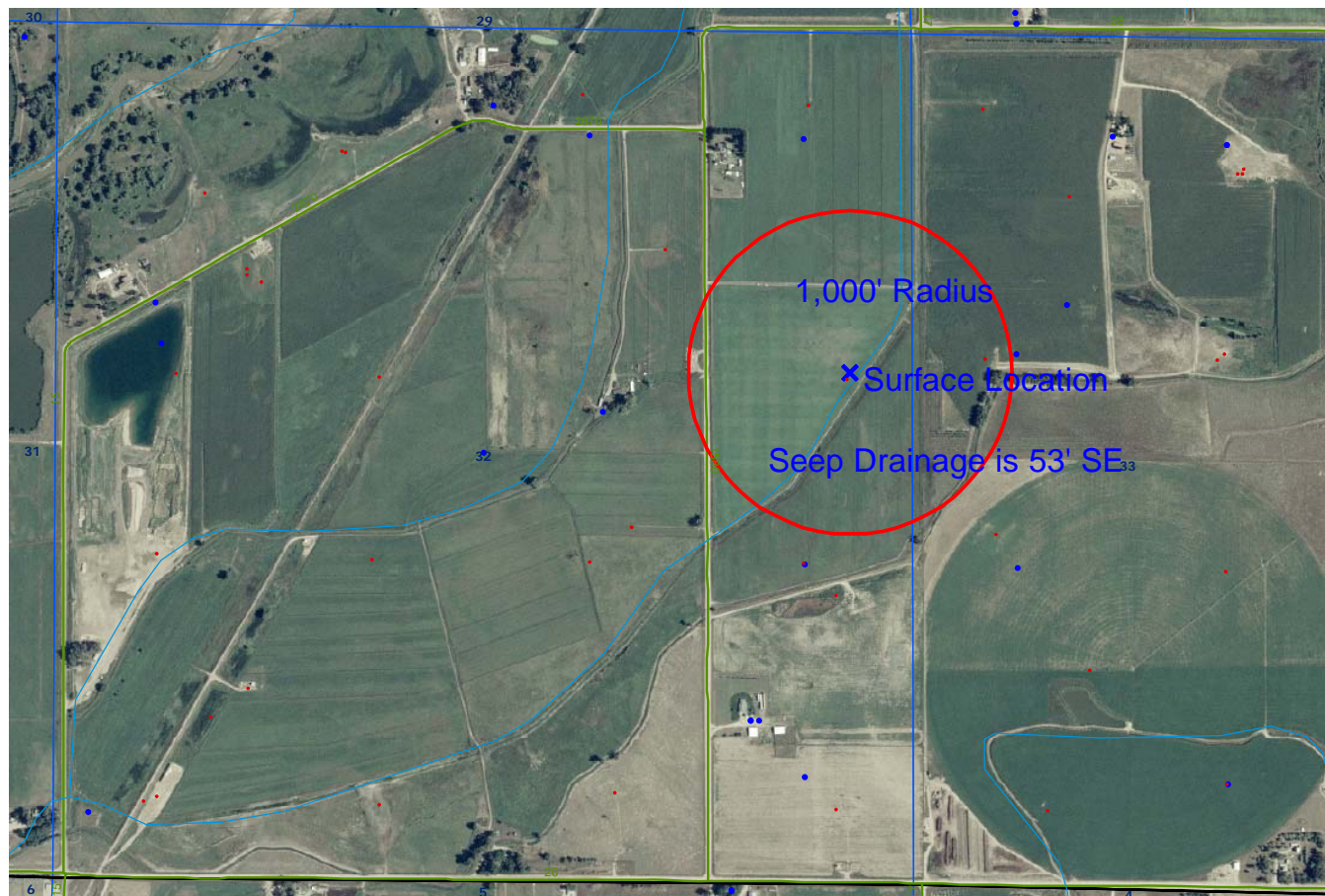
- RSO Areas
- RSO\_Osprey\_Curren
- SWH Areas
- State Wildlife Areas



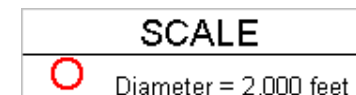
TOWNSHIP 3 NORTH, RANGE 67 WEST



LEGEND A	LEGEND B
WATER RESOURCES	1200-SEARIES WILDLIFE AREAS
Water Wells	RSO Areas
Lakes	RSO_Osprey_Curren
Major Rivers	SWH Areas
Streams	State Wildlife Areas
300-Foot Stream Buffers	



TOWNSHIP 3 NORTH, RANGE 67 WEST



LEGEND A	LEGEND B
WATER RESOURCES	1200-SEARIES WILDLIFE AREAS
Water Wells	RSO Areas
Lakes	RSO_Osprey_Curren
Major Rivers	SWH Areas
Streams	State Wildlife Areas
300-Foot Stream Buffers	