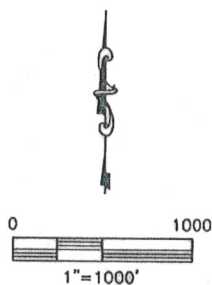
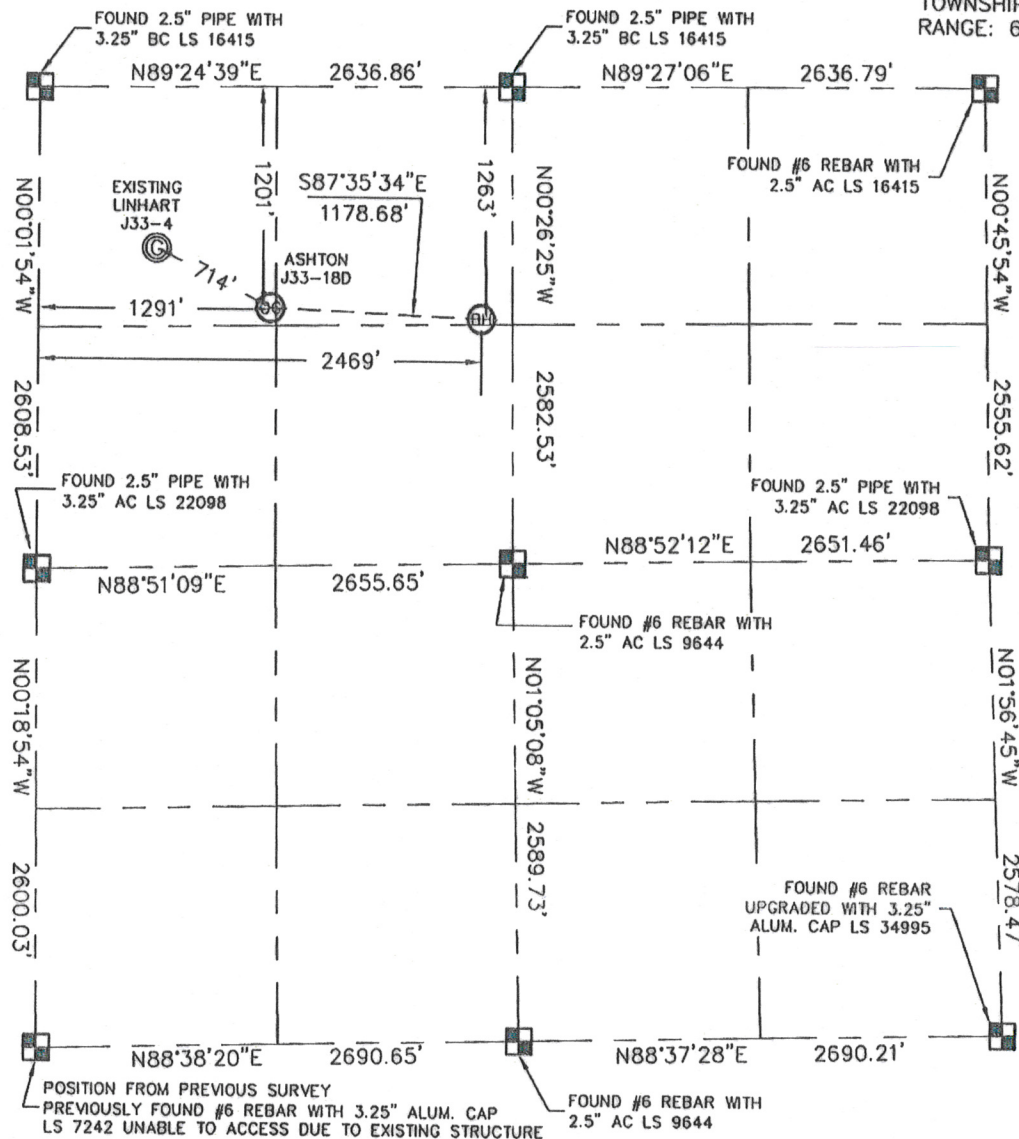


KING SURVEYORS, INC. 650 GARDEN DR. WINDSOR, CO 80550

WELL LOCATION CERTIFICATE

THIS MAP DOES NOT REPRESENT A BOUNDARY SURVEY

SECTION: 33
TOWNSHIP: 5N
RANGE: 66W



In accordance with a request from Drew Hetherington with Noble Energy Inc., King Surveyors Inc. has determined the surface location of the ASHTON J33-18D to be 1201' from the NORTH line and 1291' from the WEST line and the bottom hole to be 1263' from the NORTH line and 2469' from the WEST line as measured at right angles from the section line of Section 33, Township 5 North, Range 66 West of the Sixth Principal Meridian, County of Weld, State of Colorado. I hereby state that this Well Location Certificate was prepared by me, or under my direct supervision, that the fieldwork was completed on 6/4/2009, for and on behalf of Noble Energy Inc. That this is not a Land Survey Plot or an Improvement Survey Plot, and that it is not to be relied upon for establishment of fence, building, or other future improvement lines.

NOTE:

- 1) Bearings shown are Grid Bearings of the Colorado State Plane Coordinate System, North Zone, North American Datum 1983/92.
- 2) Ground elevations are based on an observed GPS elevation (NAVD 1988 DATUM).
- 3) NEAREST EXISTING WELL: LINHART J33-4 714'
- 4) IMPROVEMENTS: See VISIBLE IMPROVEMENTS exhibit for all improvements within 400' of well head
- 5) SURFACE USE: GRASS AREA, PASTURE

SURFACE LOCATION
LATITUDE: 40.35996°N
LONGITUDE: 104.78951°W
PDOP: 1.2
ELEV: 8805

BOTTOM HOLE
LATITUDE: 40.35979°N
LONGITUDE: 104.78428°W

1/4 SECTION 33, TOWNSHIP 5N, RANGE 66W
NEAREST PROPERTY LINE 96' SOUTH

STEVEN A. LUND
34995

NOTE

According to Colorado law, you must commence any legal action based upon any defect in this W.L.C. within three years after you discover such defect. In no event, may any action based upon any defect in this survey be commenced more than ten years after the date of the certificate shown hereon. (13-80-105 C.R.S.)

LEGEND

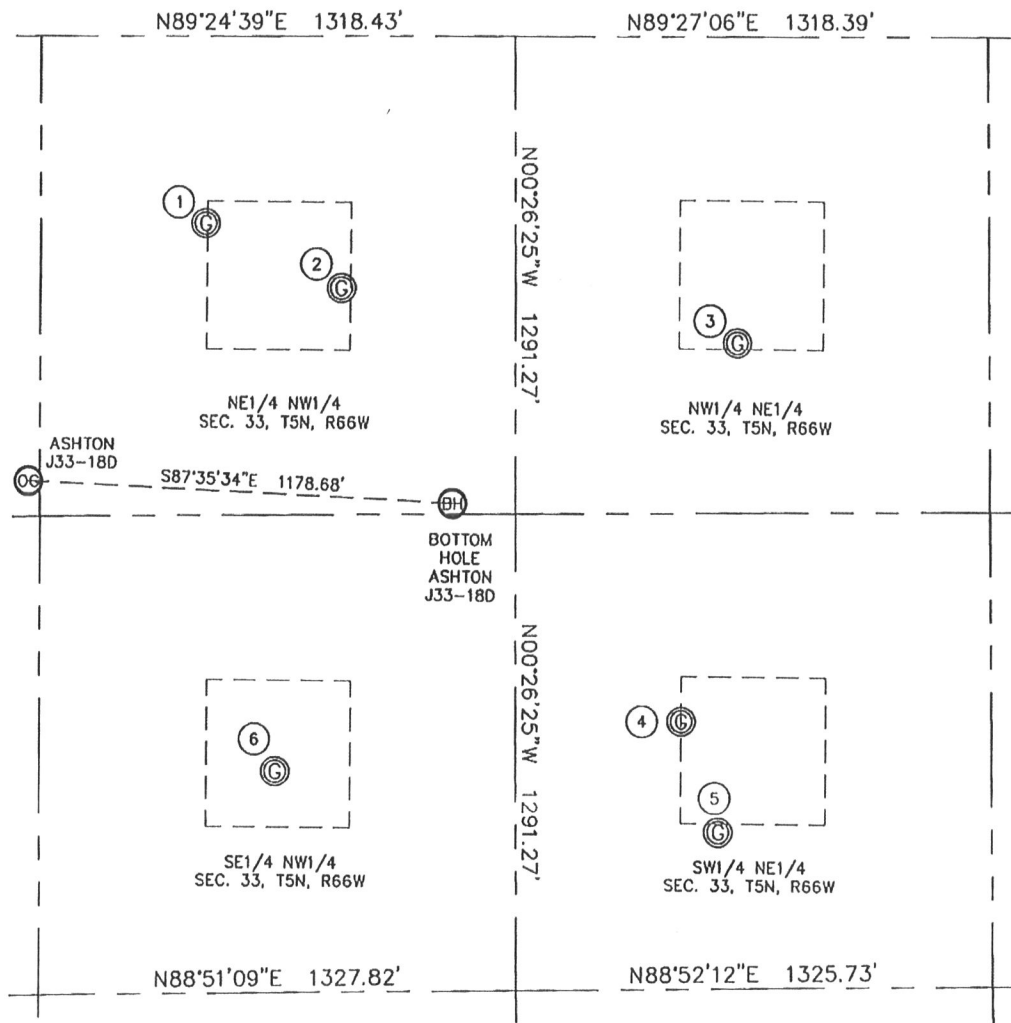
- = ALIQUOT MONUMENT AS DESCRIBED
- = CALCULATED POSITION

Steven A. Lund—On behalf of King Surveyors, Inc.
Licensed Land Surveyor No. 34995
State of Colorado

PROJECT#: 2008108

KING SURVEYORS, INC. 650 GARDEN DR. WINDSOR, CO 80550
SITE SKETCH

SECTION: 33
 TOWNSHIP: 5N
 RANGE: 66W



①
 LINHART J33-3
 NE1/4 NW1/4
 505' FNL
 1776' FWL
 LAT: 40.36187°N
 LONG: 104.78775°W
 PDOP: 2.0
 ELEV: 4810

②
 LINHART 3-33
 NE1/4 NW1/4
 681' FNL
 2156' FWL
 LAT: 40.36139°N
 LONG: 104.78639°W
 PDOP: 2.2
 ELEV: 4802

③
 LESSER PM J33-2
 NW1/4 NE1/4
 827' FNL
 2021' FEL
 LAT: 40.36099°N
 LONG: 104.78242°W
 PDOP: 1.1
 ELEV: 4794

④
 LESSER PM J33-7A
 SW1/4 NE1/4
 1852' FNL
 2184' FEL
 LAT: 40.35818°N
 LONG: 104.78299°W
 PDOP: 3.0
 ELEV: 4792

⑤
 LESSER PM J33-7
 SW1/4 NE1/4
 2154' FNL
 2085' FEL
 LAT: 40.35735°N
 LONG: 104.78263°W
 PDOP: 2.0
 ELEV: 4788

⑥
 FLACK 1
 SE1/4 NW1/4
 1989' FNL
 1980' FWL
 LAT: 40.35780°N
 LONG: 104.78706°W
 PDOP: 1.2
 ELEV: 4802

